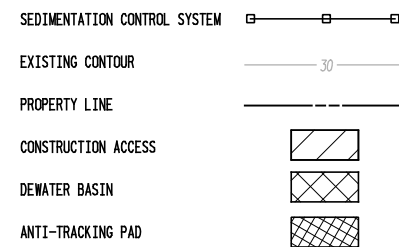
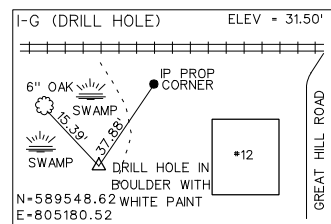
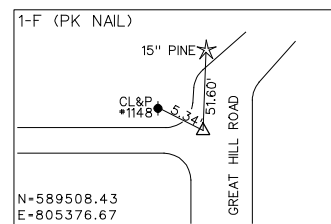
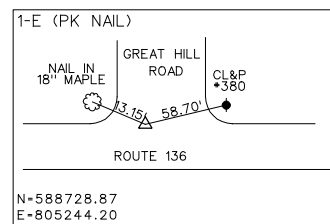
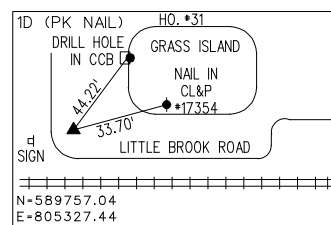
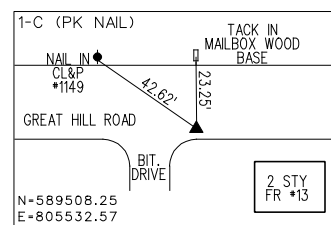
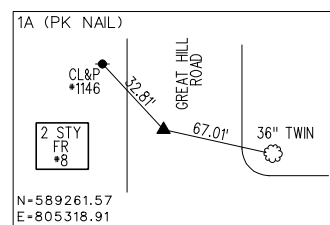


**LEGEND:**

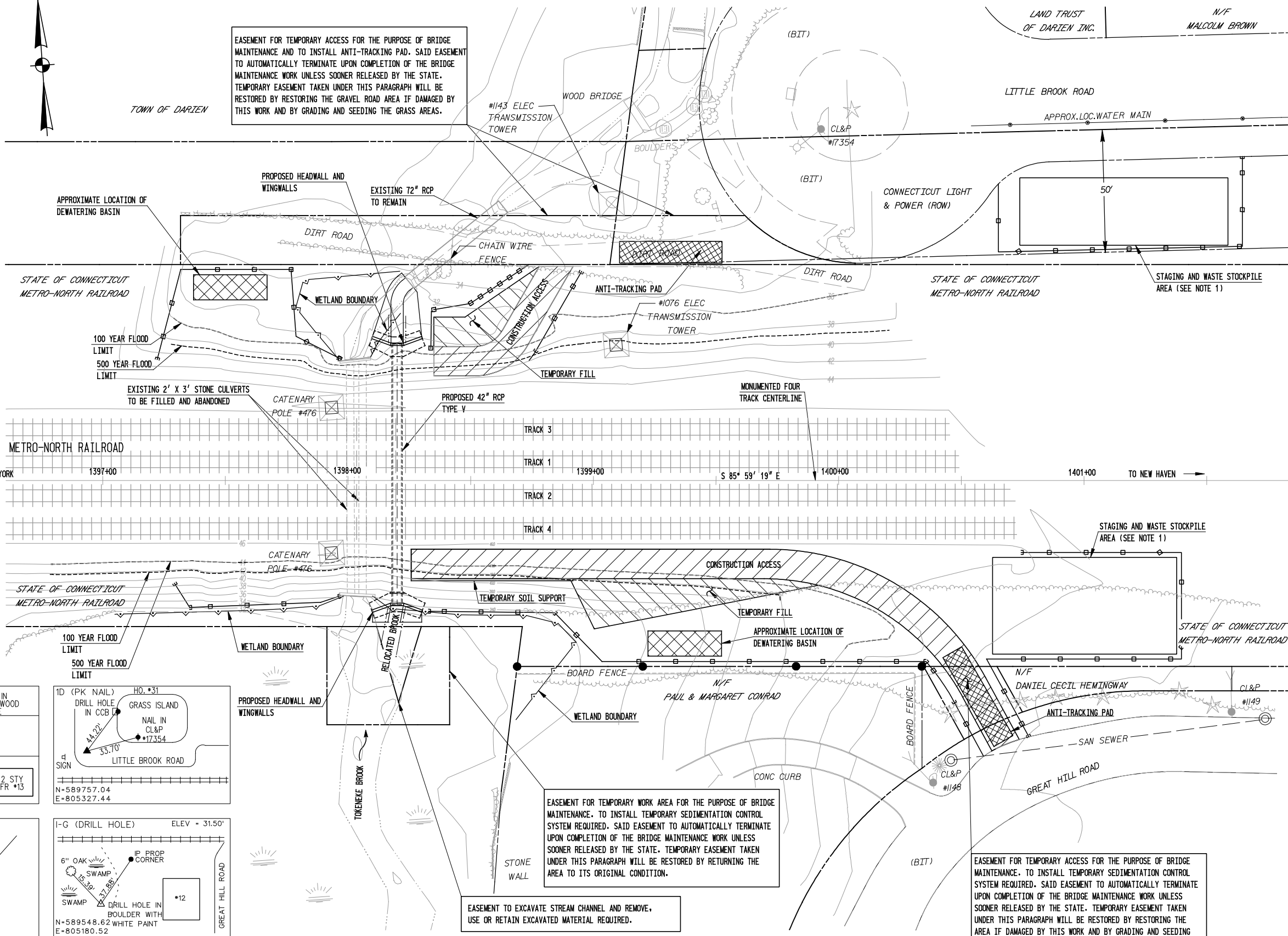


**NOTES:**

1. FOR DETAILS ON WASTE STOCKPILE AREA, SEE AREA OF ENVIRONMENTAL CONCERN AND WSA DRAWING S1-9.
2. FOR PAYMENT OF PLACING TEMPORARY FILL AND TEMPORARY SOIL SUPPORT FOR CONSTRUCTION ACCESS, SEE SPECIAL PROVISION "CONSTRUCTION ACCESS".
3. FOR ANTI-TRACKING PAD DETAILS, SEE MISCELLANEOUS DETAIL SHEET.



**SURVEY TIES**  
SCALE: N.T.S.

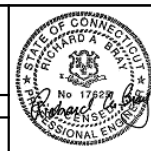


**SITE PLAN**  
SCALE: 1" = 20'-0"

REV.	DATE	DESCRIPTION	SHEET NO.

SCALE AS NOTED

DESIGNER: W. BEST	STATE OF CONNECTICUT DEPARTMENT OF TRANSPORTATION BUREAU OF PUBLIC TRANSPORTATION OFFICE OF RAIL	PROJECT TITLE: BRIDGE NO. 08020R METRO-NORTH RAILROAD (MAINLINE) MP 38.53 OVER TOKENEKE BROOK
DRAFTER: C. MARQUES		TOWN: DARIEN
CHECKED BY: R. BRAY	ENGINEER: H. W. LOCHNER, INC.	DRAWING TITLE: SITE PLAN
DATE CHECKED:	APPROVED BY: <i>Richard A. Bray</i>	SHEET NO.: 3 OF 59
	DATE: 6/27/07	



CADD: ...br08020r 01.dgn	PLOTTED: 8/15/2007
--------------------------	--------------------

PROJECT NO.: 300-102
DRAWING NO.: S1-1
SHEET NO.: 3 OF 59