
Introduction

Purpose

This chapter identifies “space plates” which include diagrams, features, loose furnishings, finishes, and notes. There is a space plate for each instructional space in each program area for each school level. Space plates provide Design Professionals and LEAs with guidelines regarding the size, finish, fixtures, furniture and equipment to be included in each space.

Description

The diagrams are not intended to determine the size or shape of a room. The minimum size of each instructional space is stated in the compilation of space found in Chapter 5. Support space sizes shown in the compilation are meant to be a guideline and may be adjusted to meet student, staff, and administrator needs.

Additional spaces such as storage, offices, restrooms, and mechanical spaces to be included in the facility are shown in Chapter 5. Diagrams are not provided for these spaces.

Features noted are desirable; however, final quantities must be determined in relation to the size and capacity stated in the compilation of space. In some cases, casework can be fixed or movable. Loose furnishings are normally furniture items needed to complete the space.

Each room has a unique code that appears in the compilation of space section and on the space plate. Example: E-AC-1 (E = elementary, AC = academic core, 1 = space plate #1).

Finishes are suggested options from life-cycle analysis that result in economical, durable, and maintainable finishes. Refer to material standards and guidelines in Chapter 7.

Plumbing, HVAC, electrical and lighting provisions must, first of all, conform to all appropriate building and energy codes. In addition to the notes on each space plate, Design Professionals should provide recommendations that enhance code requirements where possible.

Technology is a vital part of instructional delivery. Careful programming and early infrastructure inclusion in the design of the facility will result in seamless integration of technology into the learning process.

Space Plate Note

For clarification, the note to the right is included on each space plate.

Space Plate

Diagrams are for illustration purposes only. The final size, shape, furniture, features, finishes, and adjacent spaces shall be based on the educational needs as determined by the LEA and Design Professional.

THIS PAGE HAS BEEN INTENTIONALLY LEFT BLANK.

PreK-Kindergarten Classroom E-AC-1

Features - Fixed Equipment

- F1 Open casework/cubbies
- F2 Tall wardrobe with file drawers
- F3 Base & wall cabinets
- F4 Sink base cabinet
- F5 Marker board
- F6 Tack board
- F7 Exterior windows
- F8 Towel dispenser
- F9 Soap dispenser

Features - Loose Furnishings

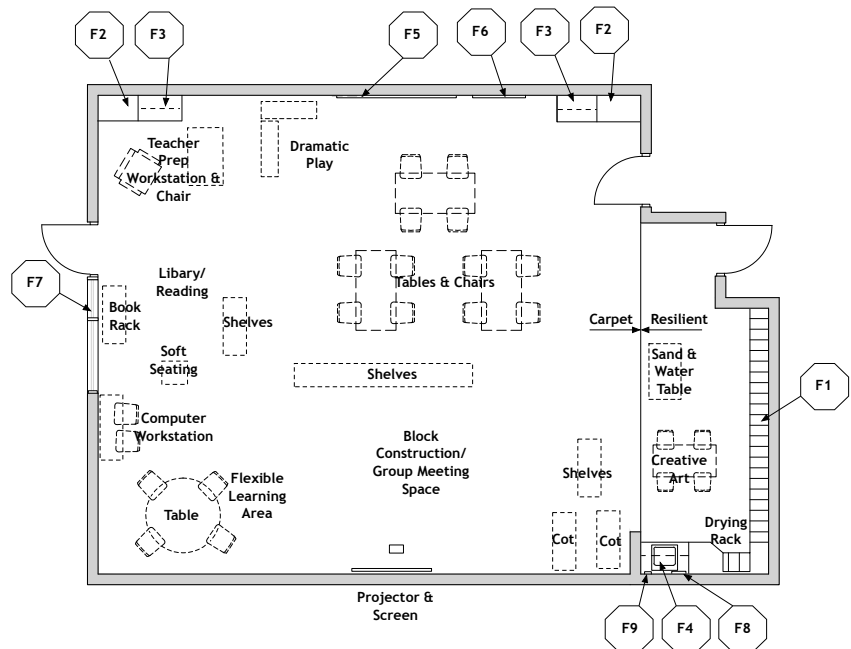
- Student activity tables - various sizes/shapes
- Computer workstation
- Student chairs
- Teacher workstation and chair
- File cabinet
- Low bookcases (fixed or mobile)
- Book display rack
- Sand table
- Water table
- Small refrigerator
- Cots
- Art storage/drying rack

Finishes:

- Flooring - Carpet; Resilient - 4' width in front of cabinets or all resilient (optional)
- Base - Resilient base
- Ceiling - Suspended, acoustical
- Walls - Painted concrete masonry units

Notes:

1. Electrical - duplex receptacles; multi-level switching
2. Technology - wireless or video port; data port; voice port & phone; data ports for students; clock; ceiling-mounted projector
3. Plumbing - sink with drinking fountain
4. Miscellaneous - operable partition between classrooms is optional
5. Adjacent spaces are listed in Chapter 5.
6. Fixed equipment should be installed at child level which is lower than in elementary classrooms



Space Plate

Diagrams are for illustration purposes only. The final size, shape, furniture, features, finishes, and adjacent spaces shall be based on the educational needs as determined by the LEA and Design Professional.

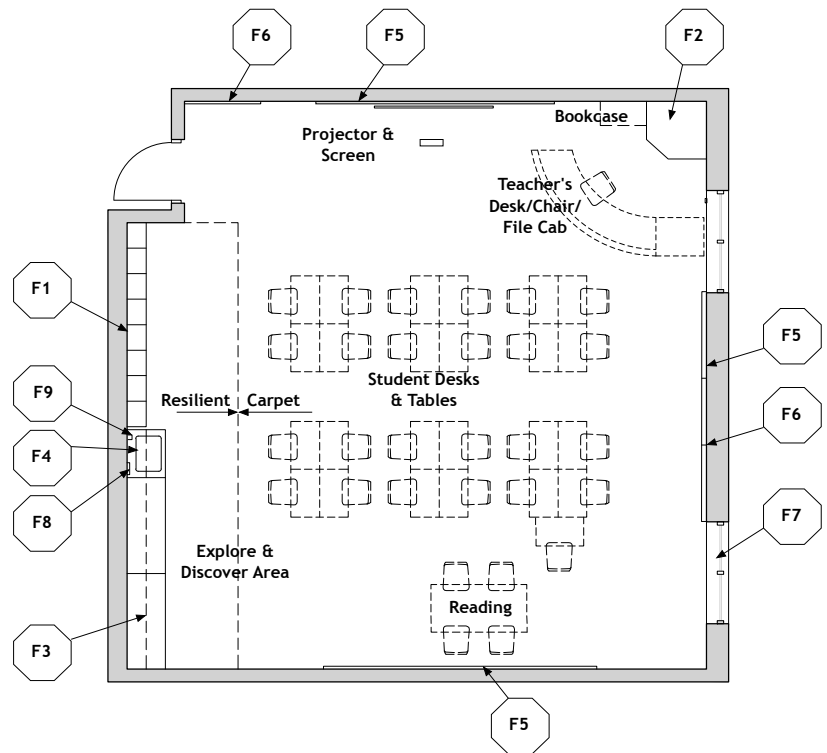
Elementary Classroom E-AC-2

Features - Fixed Equipment

- F1 Open casework/cubbies
- F2 Tall wardrobe with file drawers
- F3 Base & wall cabinets
- F4 Sink base cabinet
- F5 Marker board
- F6 Tack board
- F7 Exterior windows
- F8 Towel dispenser
- F9 Soap dispenser

Features - Loose Furnishings

- Student desks/tables
- Computer workstation
- Student chairs
- Teacher workstation and chair
- File cabinet
- Low bookcases (fixed or mobile)
- Reading table

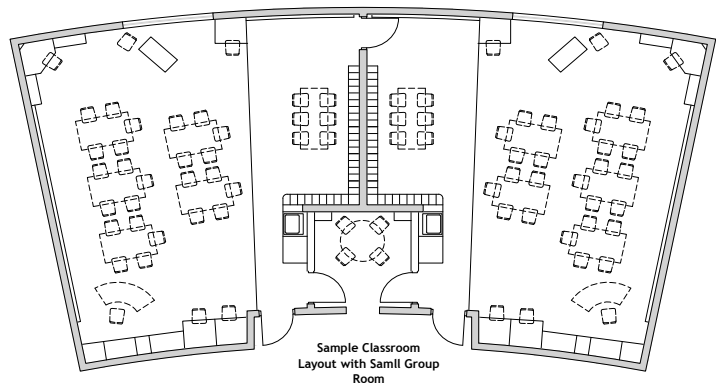


Finishes:

- Flooring - Carpet; Resilient - 4' width in front of cabinets or all resilient (optional)
- Base - Resilient base
- Ceiling - Suspended, acoustical
- Walls - Painted concrete masonry units

Notes:

1. Electrical - duplex receptacles; multi-level switching
2. Technology - wireless or video port; data port, voice port & phone; data ports for students; clock; ceiling-mounted projector
3. Plumbing - sink with drinking fountain
4. Miscellaneous - operable partition between classrooms is optional
5. Adjacent spaces are listed in Chapter 5



Space Plate

Diagrams are for illustration purposes only. The final size, shape, furniture, features, finishes, and adjacent spaces shall be based on the educational needs as determined by the LEA and Design Professional.

Applications Lab E-AC-3

Features - Fixed Equipment

- F1 Tall wardrobe with file drawers
- F2 Base cabinet with sink
- F3 Wall cabinets
- F4 Marker board
- F5 Tack board
- F6 Emergency shower/eyewash
- F7 Exterior windows
- F8 Demonstration table and sink
- F9 Towel dispenser
- F10 Soap dispenser

Features - Loose Furnishings

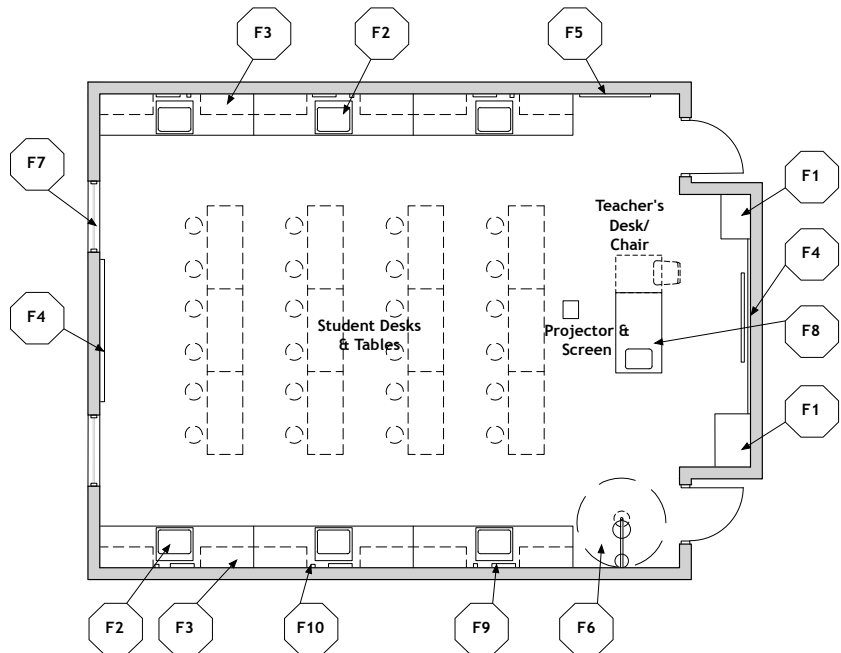
- Student desks/tables
- Student chairs
- Teacher's desk and chair

Finishes:

- Flooring -Resilient
- Base - Resilient base
- Ceiling - Suspended, acoustical
- Walls - Painted concrete masonry units

Notes:

1. Electrical - duplex receptacles; multi-level switching
2. Technology - wireless or video port; data port; voice port & phone; data ports for students; clock; ceiling-mounted projector
3. Plumbing - sink with drinking fountain
4. Miscellaneous - operable partition between classrooms is optional
5. Applications labs are flexible, adaptable spaces intended to accommodate wet/dry activities, group and instruction, and instructional programs. The final configuration, equipment, furnishings, and fixtures are to be determined by the LEA and Design Professional.
6. Adjacent spaces are listed in Chapter 5



Space Plate

Diagrams are for illustration purposes only. The final size, shape, furniture, features, finishes, and adjacent spaces shall be based on the educational needs as determined by the LEA and Design Professional.

Special Education Resource E-SE-1

Features - Fixed Equipment

- F1 Exterior windows
- F2 Tall wardrobe with file drawers
- F3 Base and wall cabinets
- F4 Sink base cabinet
- F5 Marker board
- F6 Tack board
- F7 Towel dispenser
- F8 Soap dispenser
- F9 Operable partition
- F10 Open casework for coats, backpacks, etc. with wall cabinets above

Features - Loose Furnishings

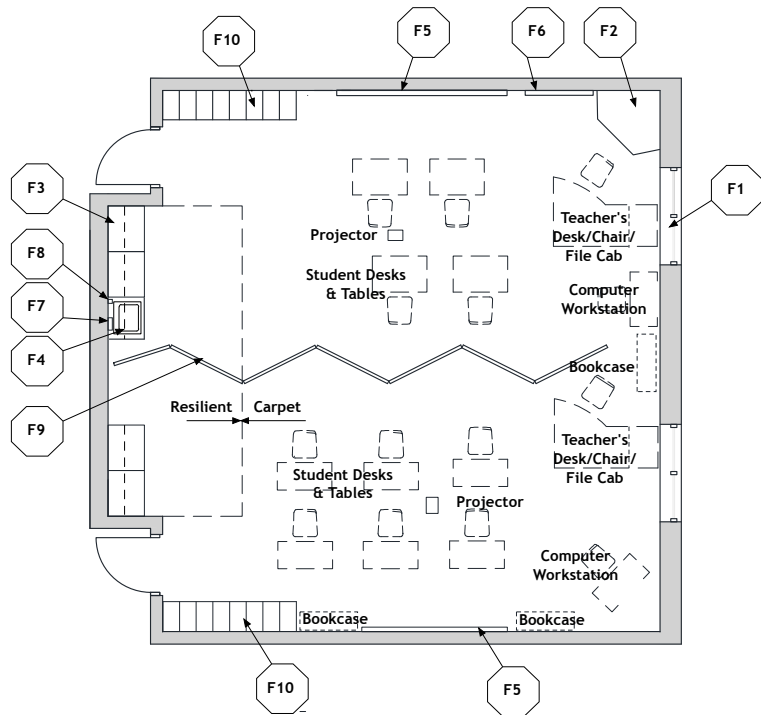
- Student desks/tables
- Computer workstation
- Student chairs
- Teacher's desk and chair
- File cabinet
- Mobile bookcases or storage unit

Finishes:

- Flooring - Carpet; Resilient - 4' width in front of cabinets
- Base - Resilient base
- Ceiling - Suspended, acoustical
- Walls - Painted concrete masonry units

Notes:

1. Plumbing - sink
2. Electrical - duplex receptacles; multi-level switching
3. Technology - video port; data port; voice port & phone; data ports for students; clock; ceiling-mounted projector
4. Miscellaneous - operable partition between classrooms is optional
5. Adjacent spaces are listed in Chapter 5



Space Plate

Diagrams are for illustration purposes only. The final size, shape, furniture, features, finishes, and adjacent spaces shall be based on the educational needs as determined by the LEA and Design Professional.

Reading Room/Circulation E-MC-1

Features - Fixed Equipment

- F1 Shelving
- F2 Circulation desk casework
- F3 Tack board
- F4 Marker board
- F5 Exterior windows

Features - Loose Furnishings

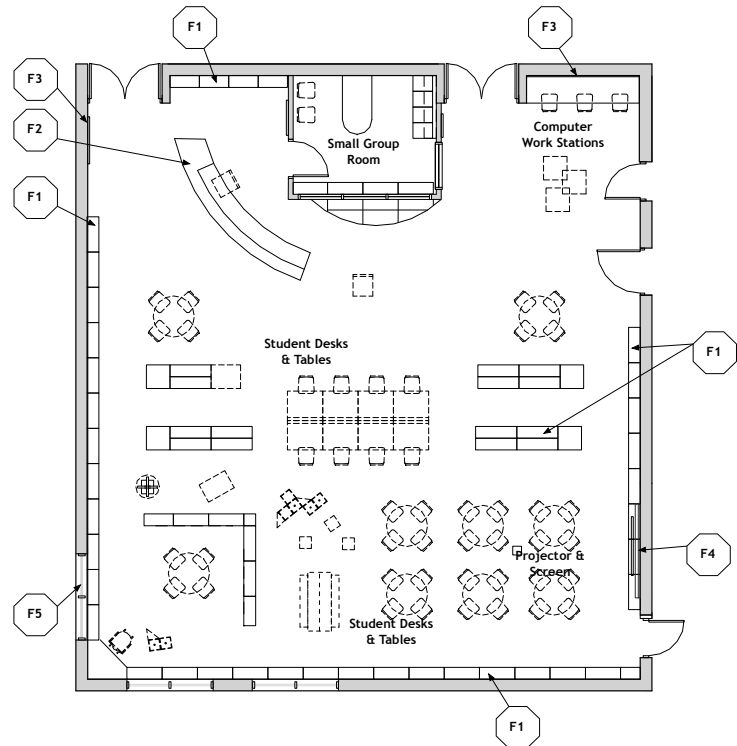
- Student tables and chairs
- Computer workstation
- Circulation desk and chair
- Atlas stand
- Paperback bookrack
- Modular picture book display
- Movable bookshelves

Finishes:

- Flooring - Carpet
- Base - Resilient base
- Ceiling - Suspended, acoustical
- Walls - Painted concrete masonry units

Notes:

1. Electrical - duplex receptacles; single-level switching
2. Technology - video ports and video display devices, voice port & phone; data ports for students; data port for library automation system; clock; ceiling-mounted projector
3. Miscellaneous - various sizes of casework for dictionaries, magazines, card catalog, etc.
4. Adjacent spaces are listed in Chapter 5



Space Plate

Diagrams are for illustration purposes only. The final size, shape, furniture, features, finishes, and adjacent spaces shall be based on the educational needs as determined by the LEA and Design Professional.

Visual Art Room E-VA-1

Features - Fixed Equipment

- F1 Sink base cabinet, 30" deep
- F2 Tall wardrobe with file drawers
- F3 Base cabinets, 30" deep
- F4 Tack board
- F5 Marker board
- F6 Exterior windows
- F7 Tall storage cabinets
- F8 Wall cabinets
- F9 Towel dispensers
- F10 Soap dispensers

Features - Loose Furnishings

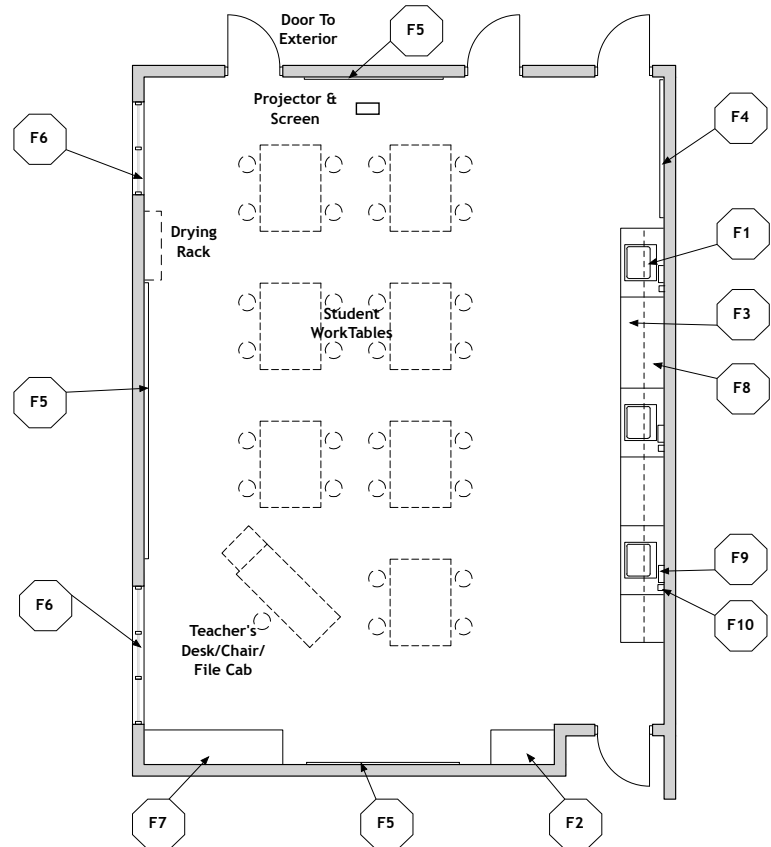
- Student worktables
- Student chairs or stools
- Teacher's desk and chair
- File cabinet
- Desk height file cabinet

Finishes:

- Flooring - Resilient or sealed concrete
- Base - Resilient base
- Ceiling - Suspended, acoustical
- Walls - Painted concrete masonry units

Notes:

1. Electrical - duplex receptacles; multi-level switching; track lighting
2. Technology - video port, data port, voice port & phone; data ports for students; clock; ceiling-mounted projector
3. Plumbing - sinks with solids interceptor
4. HVAC - manually operated exhaust air system
5. Adjacent spaces are listed in Chapter 5



Space Plate

Diagrams are for illustration purposes only. The final size, shape, furniture, features, finishes, and adjacent spaces shall be based on the educational needs as determined by the LEA and Design Professional.

Music Room E-MU-1

Features - Fixed Equipment

- F1 Projection screen
- F2 Marker board
- F3 Tack board
- F4 Bookcases
- F5 Base cabinet with sink
- F6 Towel dispenser
- F7 Tall wardrobe
- F8 Audio equipment
- F9 Acoustic wall panels

Features - Loose Furnishings

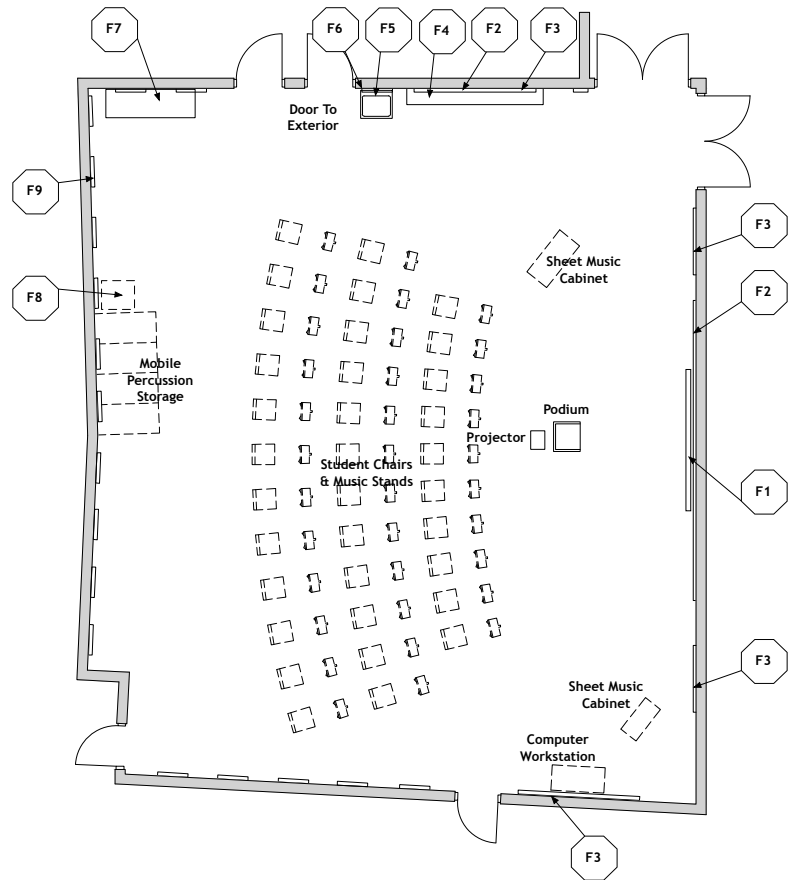
- Conducting podium
- Computer workstation
- Mobile sheet music cabinet
- Music chairs
- Music stands
- Mobile percussion storage

Finishes:

- Flooring - Carpet or all resilient
- Base - Resilient base
- Ceiling - Suspended, acoustical
- Walls - Painted concrete masonry units

Notes:

1. Electrical - duplex receptacles; multi-level switching; telecommunications grounding
2. Technology - video port, voice port & phone; data ports for students; clock; ceiling-mounted projector
3. Plumbing - drinking water cooler; 10" deep sink
4. Miscellaneous - piano; doors to have acoustic trim accessories; acoustic wall panels
5. Adjacent spaces are listed in Chapter 5



Space Plate

Diagrams are for illustration purposes only. The final size, shape, furniture, features, finishes, and adjacent spaces shall be based on the educational needs as determined by the LEA and Design Professional.

Gymnasium E-PE-1

Features - Fixed Equipment

- F1 Volleyball sleeves and standards with cart
- F2 Safety wall wainscot
- F3 Basketball backstops - fiberglass, adjustable height

Features - Loose Furnishings

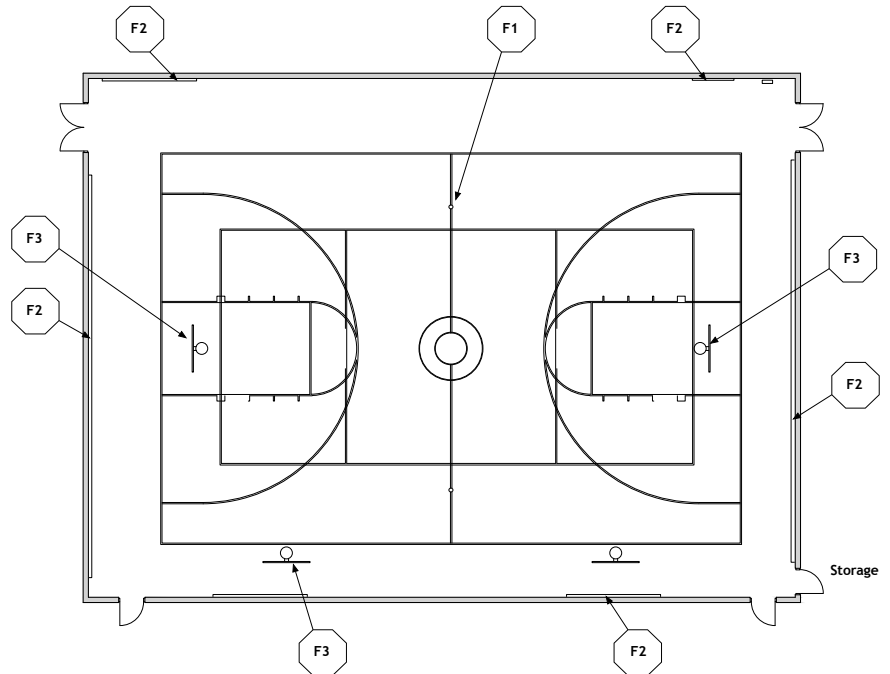
- Portable marker board

Finishes:

- Flooring - Resilient or fluid-applied athletic flooring
- Base - Resilient base
- Ceiling - Painted, exposed structure
- Walls - Painted concrete masonry units

Notes:

1. Electrical - duplex receptacles; telecommunications grounding
2. Technology - video ports, data ports; monitor with cart; clock with wire guards
3. Miscellaneous - court markings
4. Adjacent spaces are listed in Chapter 5



Space Plate

Diagrams are for illustration purposes only. The final size, shape, furniture, features, finishes, and adjacent spaces shall be based on the educational needs as determined by the LEA and Design Professional.

Student Dining E-SD-1

Features - Fixed Equipment

N/A

Features - Loose Furnishings

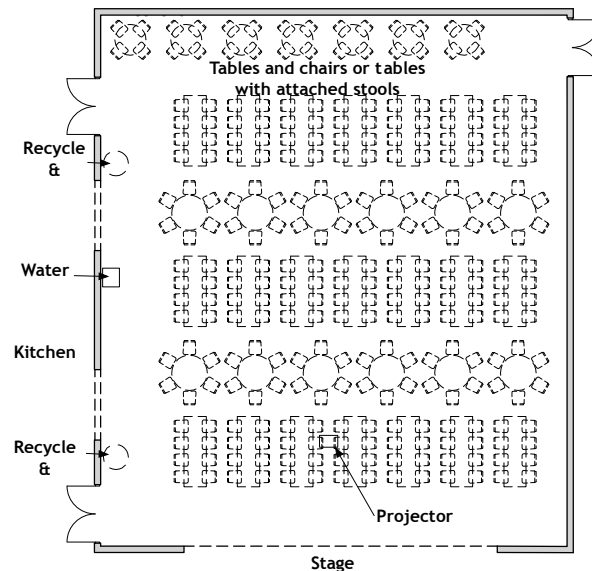
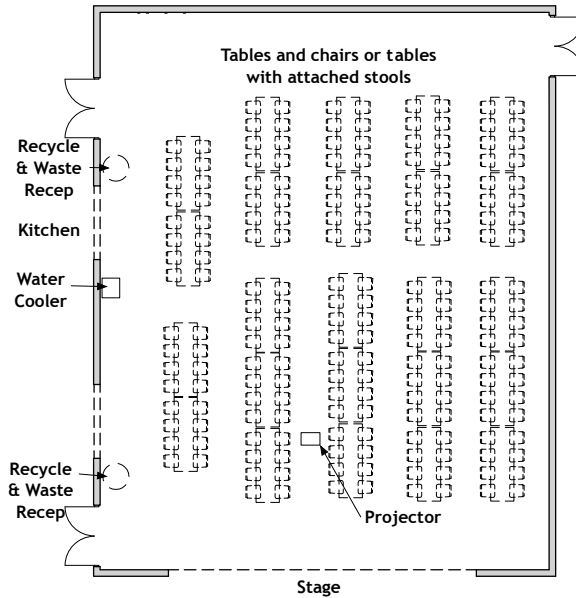
- Tables and chairs or tables with attached stools
- Large recycle & waste receptacles
- Folding or high-density stack chairs for community use
- Carts for chairs

Finishes:

- Flooring - Resilient, porcelain tile, or terrazzo tile
- Base - Resilient base, Porcelain tile
- Ceiling - Suspended, acoustical
- Walls - Painted concrete masonry units

Notes:

1. Electrical - duplex receptacles; multi-level switching; telecommunications grounding
2. Technology - video ports; data ports; clock; ceiling-mounted projector
3. Sound system - sound equipment; control panel and speakers
4. Plumbing - drinking water cooler
5. Adjacent spaces are listed in Chapter 5



Space Plate

Diagrams are for illustration purposes only. The final size, shape, furniture, features, finishes, and adjacent spaces shall be based on the educational needs as determined by the LEA and Design Professional.

Stage E-SD-2

Features - Fixed Equipment

- F1 Projection screen
- F2 Curtain
- F3 Curtain and valance
- F4 Operable partition
- F5 Handrail

Features - Loose Furnishings

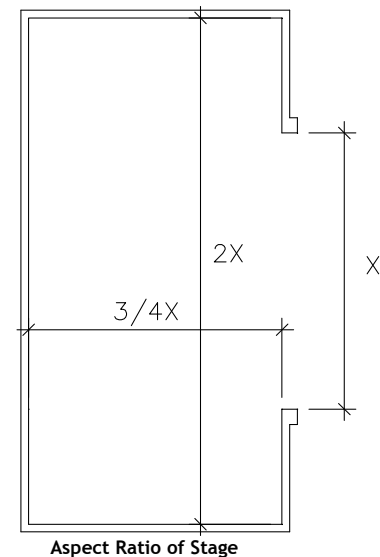
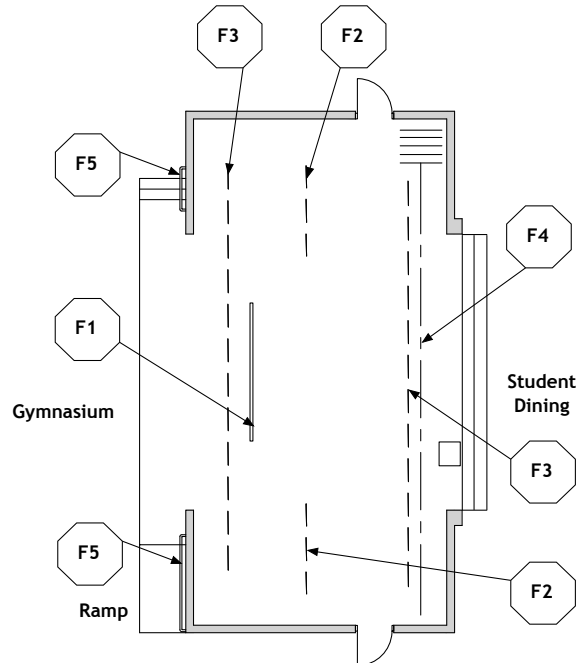
Portable risers

Finishes:

- Flooring - Resilient or wood
- Base - Resilient base
- Ceiling - Suspended, acoustical
- Walls - Painted concrete masonry units

Notes:

1. Electrical - duplex receptacles; single-level switching; telecommunications grounding
2. Technology - video ports and data ports - 1 on each side of proscenium opening
3. Adjacent spaces are listed in Chapter 5



Space Plate

Diagrams are for illustration purposes only. The final size, shape, furniture, features, finishes, and adjacent spaces shall be based on the educational needs as determined by the LEA and Design Professional.

Kitchen E-FS-1

Features - Fixed Equipment

Food Service Equipment

Features - Loose Furnishings

N/A

Finishes:

Flooring - Quarry tile

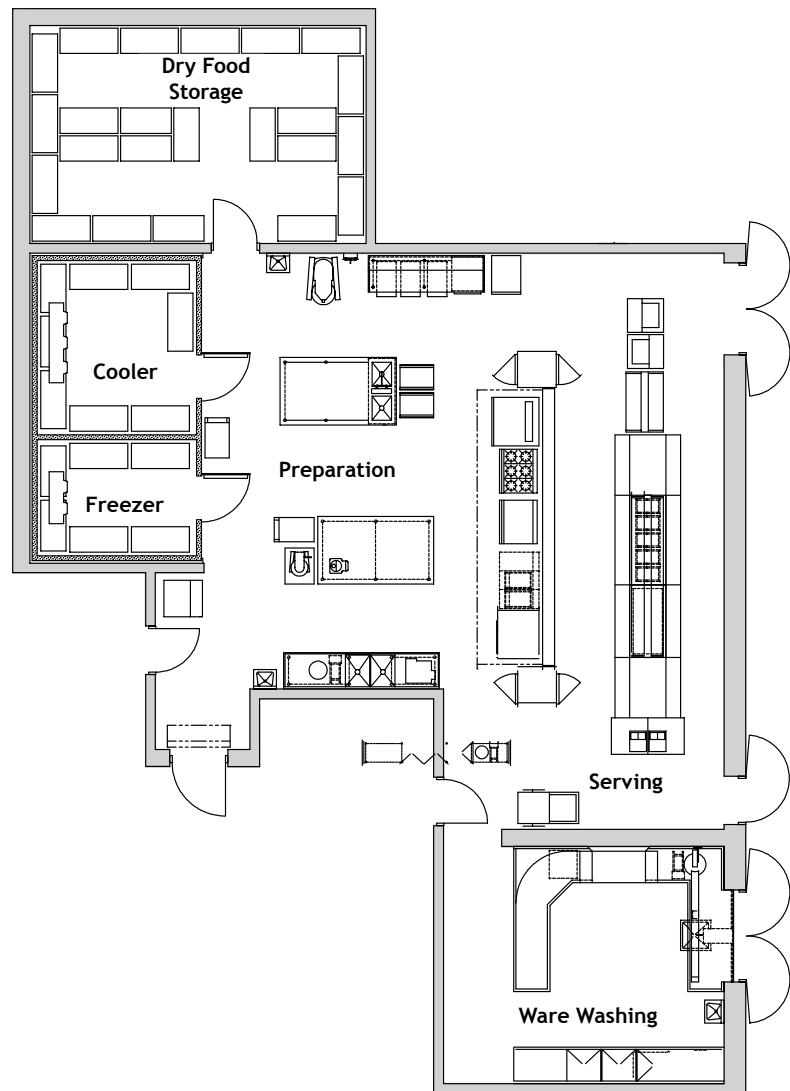
Base - Quarry tile base

Ceiling - Cleanable, suspended, acoustical

Walls - Epoxy-painted concrete masonry units

Notes:

1. Electrical - dual level switching; duplex receptacles; connections to food service equipment
2. Technology - voice port and phone; data port at cash register; clock
3. Plumbing - hand washing lavatory; plumbing and gas connections; connections to food service equipment; floor drains
4. HVAC - kitchen canopy exhaust system
5. Adjacent spaces are listed in Chapter 5



Space Plate

Diagrams are for illustration purposes only. The final size, shape, furniture, features, finishes, and adjacent spaces shall be based on the educational needs as determined by the LEA and Design Professional.

Large Group Restrooms E-BS-1

Features - Fixed Equipment

- F1 Towel dispensers
- F2 Tall wall mirror
- F3 Toilet tissue holder
- F4 Grab bar
- F5 Soap dispensers
- F6 Toilet partitions
- F7 Mirrors
- F8 Shelves

Features - Loose Furnishings

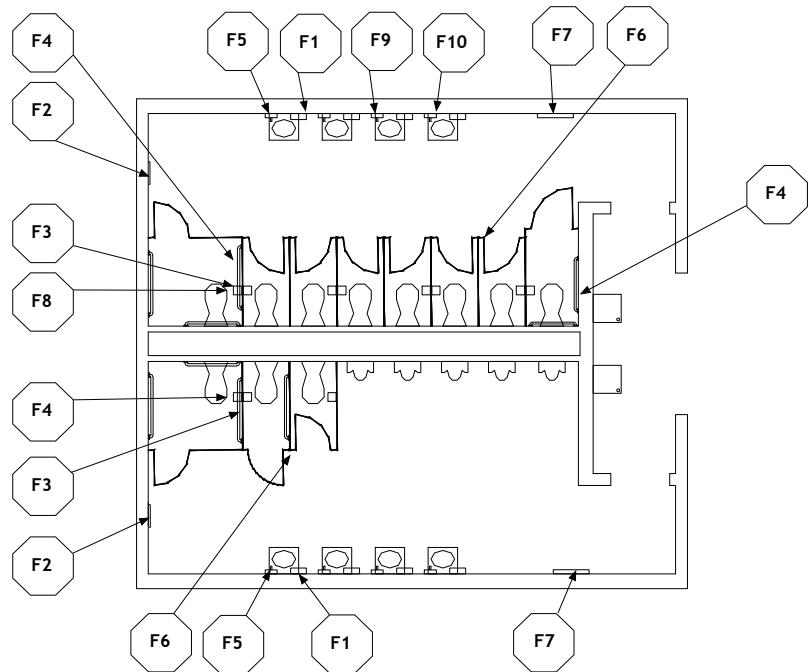
- Waste receptacles

Finishes:

- Flooring - Ceramic mosaic tile base
- Flooring Options - Porcelain tile or terrazzo tile
- Base - Ceramic mosaic tile base
- Base Options - Structural glazed tile base or porcelain tile base
- Ceiling - Suspended, acoustical
- Ceiling Options - Abuse-resistant gypsum wallboard
- Walls - Painted concrete masonry units

Notes:

1. Plumbing - water closets, urinals, lavatories, and hydrants; water coolers; floor drains
2. Electrical - single-level switching; duplex receptacle
3. Adjacent spaces are listed in Chapter 5



Space Plate

Diagrams are for illustration purposes only. The final size, shape, furniture, features, finishes, and adjacent spaces shall be based on the educational needs as determined by the LEA and Design Professional.

Corridors/Vestibules E-BS-2

Features - Fixed Equipment

Fire extinguishers and cabinets
Recessed vinyl floor mats or surface mats

Features - Loose Furnishings

Recycling bins and waste receptacles

Finishes:

Flooring - Resilient, porcelain tile, or terrazzo
Base - Resilient base or structural glazed tile
Ceiling - Suspended, acoustical
Optional in vestibules - Abuse-resistant gypsum wallboard
Walls - Painted concrete masonry units

NOTE - At entries adjacent to dining/commons area, match dining/commons flooring.

Notes:

1. Electrical - duplex receptacles; dual-level switching
2. Technology - clocks, wireless access points; video ports
3. Plumbing - drinking water coolers
4. Miscellaneous - display cases

Corridors shall be a minimum of 8 feet wide.

Corridors are to meet the egress requirements applicable codes.

Instructional and activity areas shall be accessible by corridors without passing through another instructional or activity area.

Area of vestibules is to be included within area allotted for corridors.

Width of vestibules can be no less than minimum width of adjacent corridor

Vestibules are to be provided at major entrances/exits.

Space Plate

Diagrams are for illustration purposes only. The final size, shape, furniture, features, finishes, and adjacent spaces shall be based on the educational needs as determined by the LEA and Design Professional.

THIS PAGE HAS BEEN INTENTIONALLY LEFT BLANK.

Middle School Classroom M-AC-1

Features - Fixed Equipment

- F1 Tall wardrobe with file drawers
- F2 Base & wall cabinets
- F3 Marker board
- F4 Tack board
- F5 Exterior windows
- F6 Low bookcases

Features - Loose Furnishings

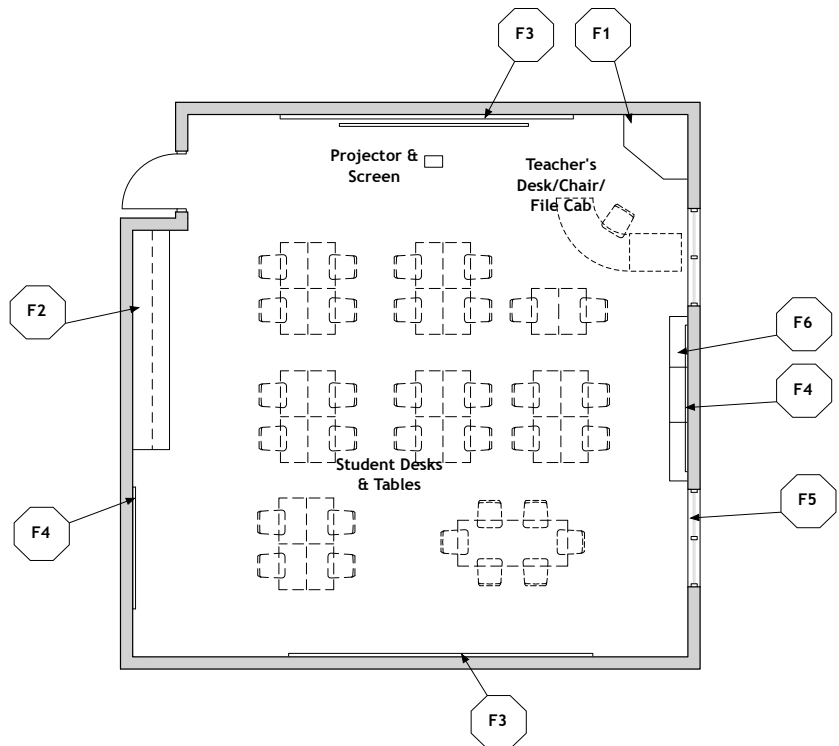
- Student desks/tables
- Computer workstation
- Student chairs
- Teacher's desk and chair
- File cabinet

Finishes:

- Flooring - Carpet; Resilient
- Base - Resilient base
- Ceiling - Suspended, acoustical
- Walls - Painted concrete masonry units

Notes:

1. Electrical - duplex receptacles; multi-level switching
2. Technology - wireless or video port; data port; voice port & phone; data ports for students; clock; ceiling-mounted projector
3. Plumbing - sink with drinking fountain
4. Miscellaneous - operable partition between classrooms is optional
5. Adjacent spaces are listed in Chapter 5



Space Plate

Diagrams are for illustration purposes only. The final size, shape, furniture, features, finishes, and adjacent spaces shall be based on the educational needs as determined by the LEA and Design Professional.

Applications/Career & Technical Education Lab M-AC-3

Features - Fixed Equipment

- F1 Tall wardrobe with file drawers
- F2 Base cabinet with sink
- F3 Wall cabinets
- F4 Marker board
- F5 Tack board
- F6 Emergency shower/eyewash
- F7 Exterior windows
- F8 Demonstration table and sink
- F9 Towel dispenser

Features - Loose Furnishings

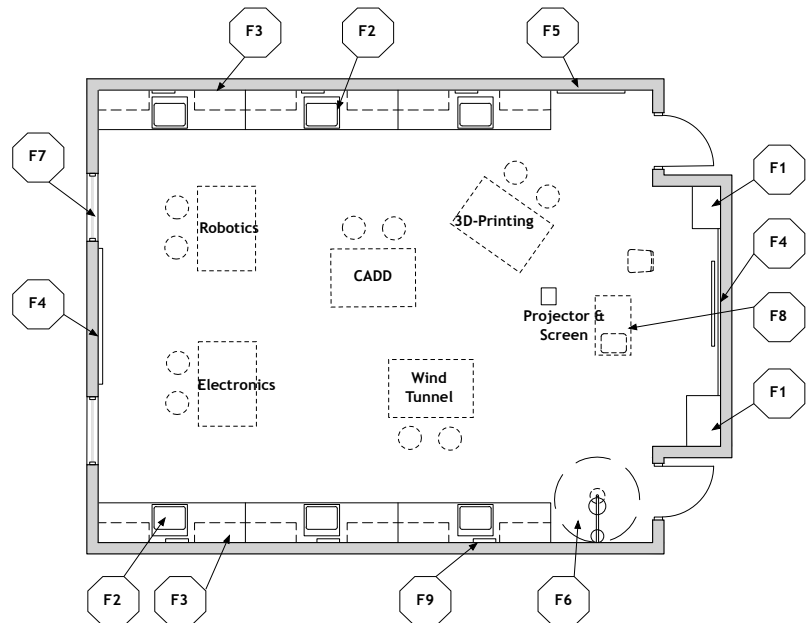
- Student desks/tables
- Student chairs
- Teacher workstation and chair

Finishes:

- Flooring - Resilient
- Base - Resilient base
- Ceiling - Suspended, acoustical
- Walls - Painted concrete masonry units

Notes:

1. Electrical - duplex receptacles; multi-level switching
2. Technology - wireless or video port, data port, voice port & phone; data ports for students; clock; ceiling-mounted projector
3. Plumbing - sink with drinking fountain
4. Miscellaneous - operable partition between classrooms is optional
5. Applications labs are flexible, adaptable spaces intended for regular and career & technical educational instruction such as Science, Electronics, 3-D Printing, Robotics/Engineering or CAD programs. The final configuration, equipment, furnishings, and fixtures are to be determined by the LEA and Design Professional.
6. Adjacent spaces are listed in Chapter 5



Space Plate

Diagrams are for illustration purposes only. The final size, shape, furniture, features, finishes, and adjacent spaces shall be based on the educational needs as determined by the LEA and Design Professional.

Special Education Resource M-SE-1

Features - Fixed Equipment

- F1 Exterior windows
- F2 Tall wardrobe with file drawers
- F3 Base and wall cabinets
- F4 Sink base cabinet
- F5 Marker board
- F6 Tack board
- F7 Towel dispenser
- F8 Soap dispenser
- F9 Operable partition
- F10 Open casework for coats, backpacks, etc. with wall cabinets above

Features - Loose Furnishings

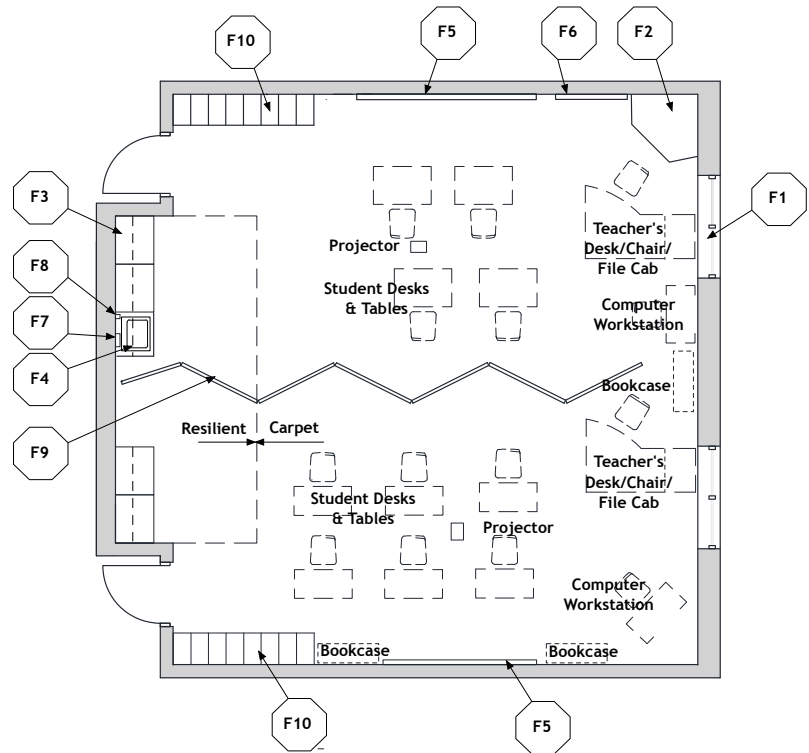
- Student desks/tables
- Computer workstation
- Student chairs
- Teacher's desk and chair
- File cabinet
- Mobile bookcases or storage unit

Finishes:

- Flooring - Carpet; Resilient - 4' width in front of cabinets
- Base - Resilient base
- Ceiling - Suspended, acoustical
- Walls - Painted concrete masonry units

Notes:

1. Plumbing - sink
2. Electrical - duplex receptacles; multi-level switching
3. Technology - video port, data port, voice port & phone; data ports for students; clock; ceiling-mounted projector
4. Miscellaneous - operable partition between classrooms is optional
5. Adjacent spaces are listed in Chapter 5



Space Plate

Diagrams are for illustration purposes only. The final size, shape, furniture, features, finishes, and adjacent spaces shall be based on the educational needs as determined by the LEA and Design Professional.

Reading Room/Circulation M-MC-1

Features - Fixed Equipment

- F1 Shelving
- F2 Circulation desk casework
- F3 Tack board
- F4 Marker board
- F5 Exterior windows

Features - Loose Furnishings

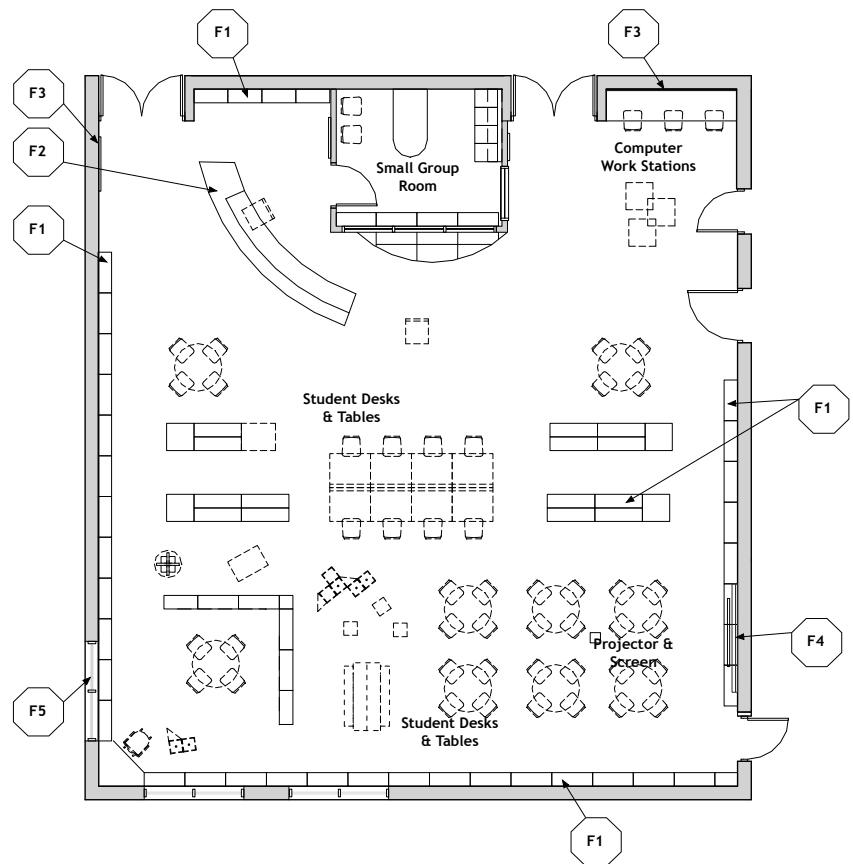
- Student tables and chairs
- Computer workstation
- Circulation desk and chair
- Atlas stand
- Paperback bookrack
- Modular picture book display
- Movable bookshelves

Finishes:

- Flooring - Carpet
- Base - Resilient base
- Ceiling - Suspended, acoustical
- Walls - Painted concrete masonry units

Notes:

1. Electrical - duplex receptacles; single-level switching
2. Technology - video ports and video display devices, voice port & phone; data ports for students; data port for library automation system; clock; ceiling-mounted projector
3. Miscellaneous - various sizes of casework for dictionaries, magazines, card catalog, etc.
4. Adjacent spaces are listed in Chapter 5



Space Plate

Diagrams are for illustration purposes only. The final size, shape, furniture, features, finishes, and adjacent spaces shall be based on the educational needs as determined by the LEA and Design Professional.

Visual Art Room M-VA-1

Features - Fixed Equipment

- F1 Sink base cabinet, 30" deep
- F2 Tall wardrobe with file drawers
- F3 Base cabinets, 30" deep
- F4 Tack board
- F5 Marker board
- F6 Exterior windows
- F7 Tall storage cabinets
- F8 Wall cabinets
- F9 Towel dispensers
- F10 Soap dispensers

Features - Loose Furnishings

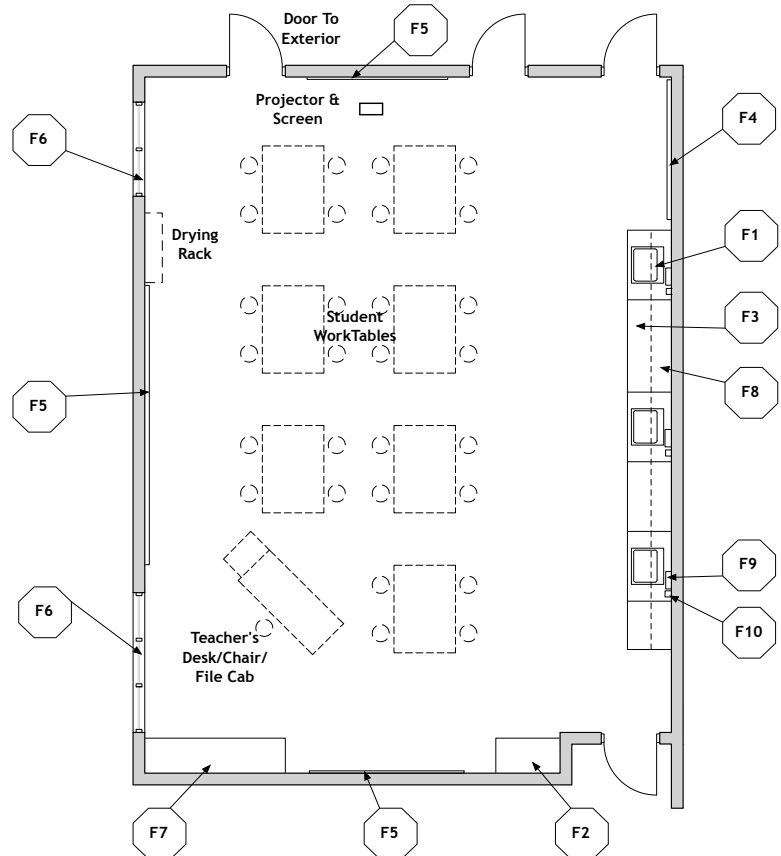
- Student worktables
- Student chairs or stools
- Teacher's desk and chair
- File cabinet
- Pottery Wheel

Finishes:

- Flooring - Resilient or sealed concrete
- Base - Resilient base
- Ceiling - Suspended, acoustical
- Walls - Painted concrete masonry units

Notes:

1. Electrical - duplex receptacles; multi-level switching; track lighting
2. Technology - video port, data port, voice port & phone; clock; ceiling-mounted projector; data ports for students
3. Plumbing - sinks with solids interceptor
4. HVAC - manually operated exhaust air
5. Adjacent spaces are listed in Chapter 5



Space Plate

Diagrams are for illustration purposes only. The final size, shape, furniture, features, finishes, and adjacent spaces shall be based on the educational needs as determined by the LEA and Design Professional.

Instrumental Music Room M-MU-1

Features - Fixed Equipment

- F1 Projection screen
- F2 Marker board
- F3 Tack board
- F4 Bookcases
- F5 Base cabinet with sink
- F6 Towel dispenser
- F7 Tall wardrobe
- F8 Audio equipment
- F9 Acoustical Wall Panels

Features - Loose Furnishings

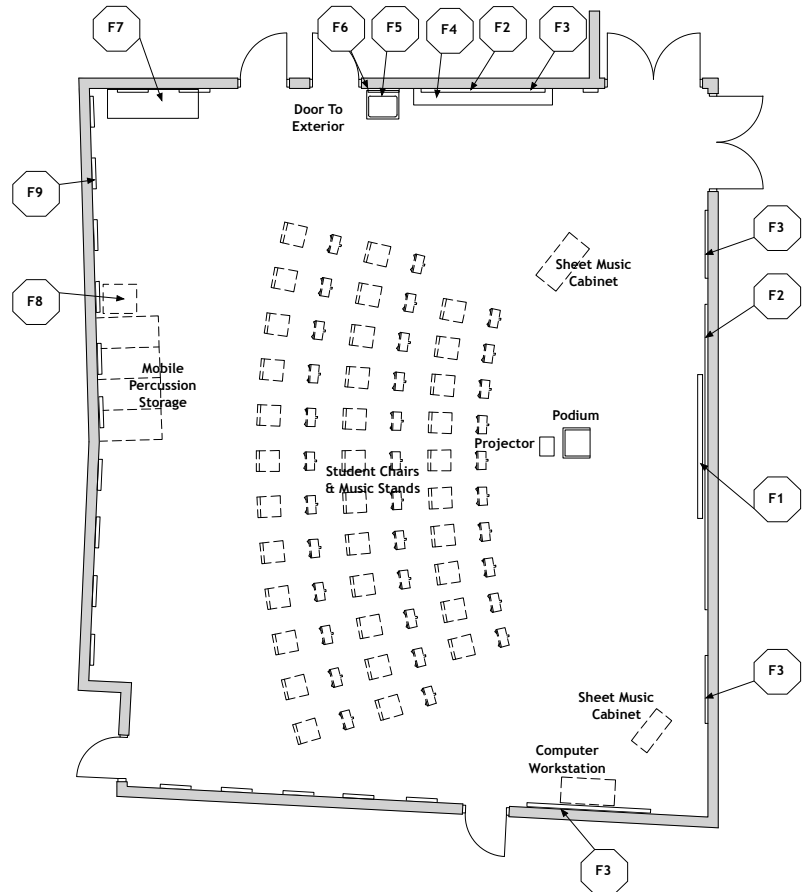
- Conducting podium
- Computer workstation
- Mobile sheet music cabinet
- Music chairs
- Music stands
- Mobile percussion storage

Finishes:

- Flooring - Carpet or all Resilient
- Base - Resilient base
- Ceiling - Suspended, acoustical
- Walls - Painted concrete masonry units
- Walls - Acoustical wall treatment

Notes:

1. Electrical - duplex receptacles; multi-level switching; telecommunications grounding
2. Technology - video port, voice port & phone; data ports for students; clock; ceiling-mounted projector
3. Plumbing - drinking water cooler; 10" deep sink
4. Miscellaneous - piano; doors to have acoustic trim accessories; acoustic wall panels
5. Adjacent spaces are listed in Chapter 5



Space Plate

Diagrams are for illustration purposes only. The final size, shape, furniture, features, finishes, and adjacent spaces shall be based on the educational needs as determined by the LEA and Design Professional.

Vocal Music Room M-MU-2

Features - Fixed Equipment

- F1 Projection screen
- F2 Marker board
- F3 Tack board
- F4 Bookcases
- F5 Base cabinet with sink
- F6 Towel dispenser
- F7 Tall wardrobe
- F8 Audio equipment
- F9 Acoustic wall panels

Features - Loose Furnishings

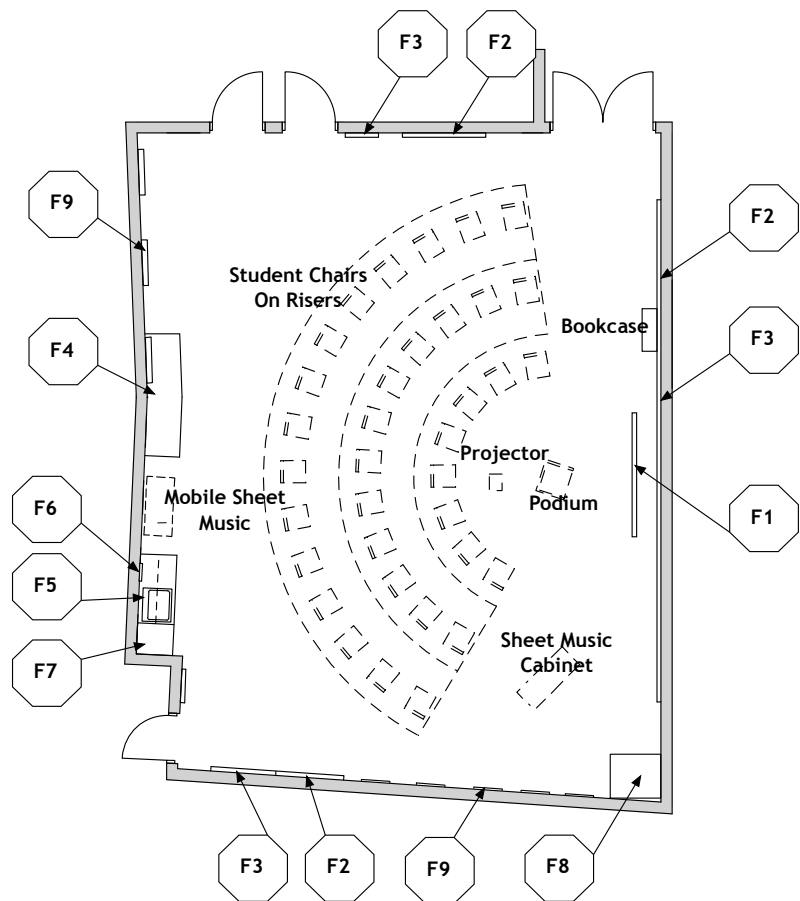
- Conducting podium
- Computer workstation furniture
- Mobile sheet music cabinet
- Music chairs
- Portable risers

Finishes:

- Flooring - Carpet
- Optional - Resilient
- Base - Resilient base
- Ceiling - Suspended, acoustical
- Walls - Painted concrete masonry units
- Walls - Acoustical wall treatment

Notes:

1. Electrical - duplex receptacles; multi-level switching; telecommunications grounding
2. Technology - video port, voice port & phone; data ports for students; clock; ceiling-mounted projector
3. Miscellaneous - piano
4. Adjacent spaces are listed in Chapter 5



Space Plate

Diagrams are for illustration purposes only. The final size, shape, furniture, features, finishes, and adjacent spaces shall be based on the educational needs as determined by the LEA and Design Professional.

Gymnasium M-PE-1

Features - Fixed Equipment

- F1 Basketball backstops - glass, adjustable height
- F2 Volleyball sleeves and standards on a cart
- F3 Safety wall wainscot
- F4 Divider gym curtain
- F5 Chin-up bar
- F6 Scorer table
- F7 Wrestling mat hoist
- F8 Telescoping bleachers

Features - Loose Furnishings

- Portable marker board

Miscellaneous:

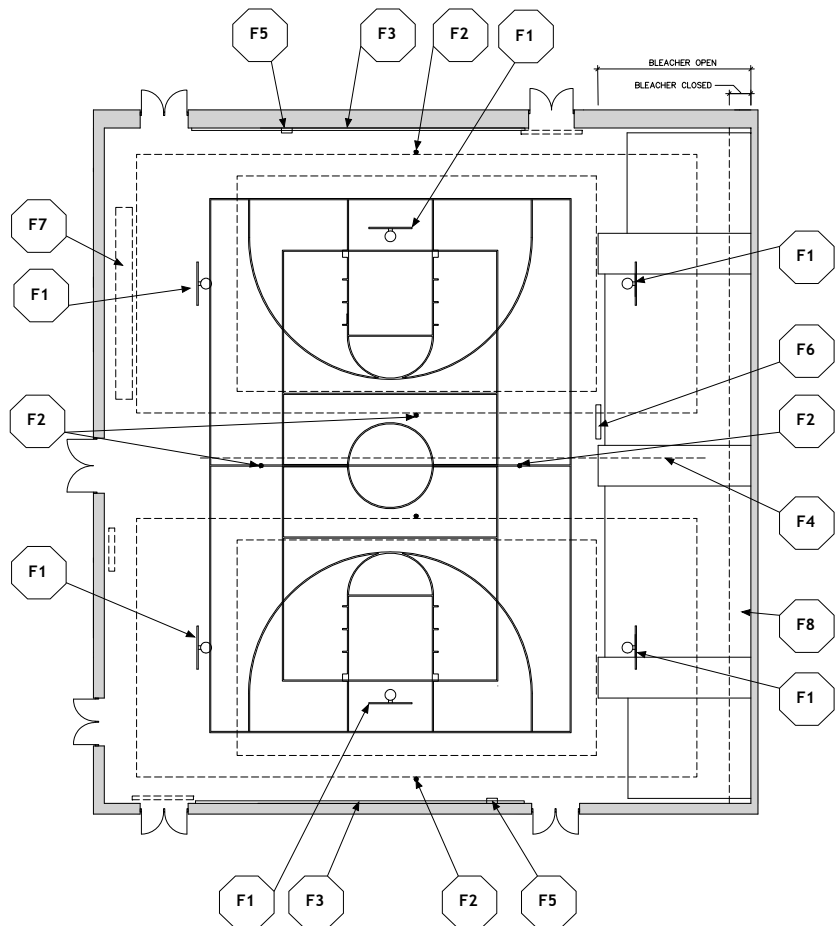
- Accessible seating
- Court markings
- Wire guards on light fixtures and wall-mounted electrical devices

Finishes:

- Flooring - Wood flooring
- Base - Ventilated resilient base
- Ceiling - Painted, exposed structure
- Walls - Painted concrete masonry units
- Sound absorbing concrete masonry units on 2 walls

Notes:

1. Electrical: duplex receptacles; single-level switching; scoreboard; telecommunications grounding
2. Technology: video ports; voice port; data ports; monitor with cart; clocks with wire guards
3. Adjacent spaces are listed in Chapter 5



Space Plate

Diagrams are for illustration purposes only. The final size, shape, furniture, features, finishes, and adjacent spaces shall be based on the educational needs as determined by the LEA and Design Professional.

Student Dining M-SD-1

Features - Fixed Equipment

N/A

Features - Loose Furnishings

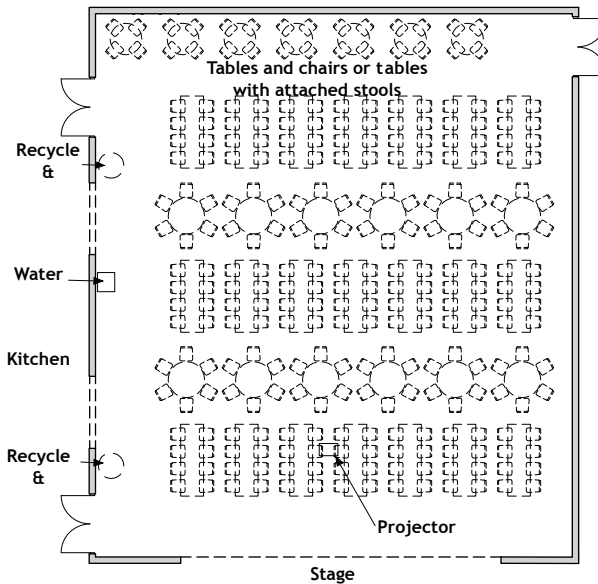
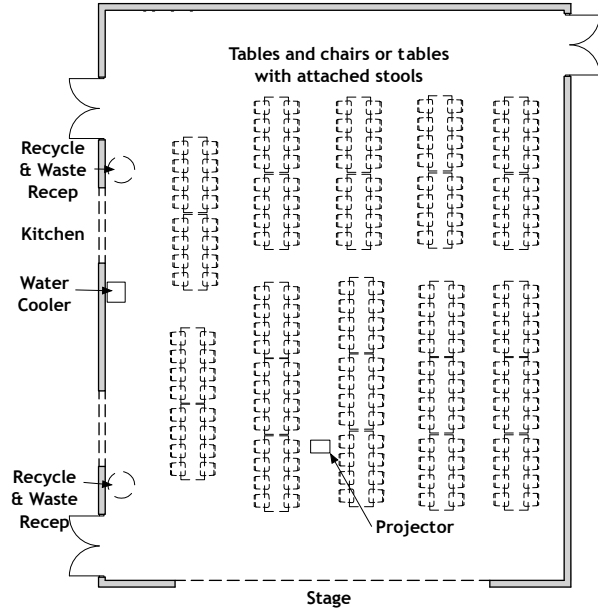
- Tables and chairs or tables with attached stools
- Large recycle & waste receptacles
- Folding or high-density stack chairs for community use
- Carts for chairs

Finishes:

- Flooring - Resilient, porcelain tile, or terrazzo tile
- Base - Resilient base, Porcelain tile
- Ceiling - Suspended, acoustical
- Walls - Painted concrete masonry units

Notes:

1. Electrical - duplex receptacles; multi-level switching; telecommunications grounding
2. Technology - clock; ceiling-mounted projector; video ports; data ports
3. Sound system - sound equipment, control panel, and speakers
4. Plumbing - drinking water cooler
5. Adjacent spaces are listed in Chapter 5



Space Plate
 Diagrams are for illustration purposes only. The final size, shape, furniture, features, finishes, and adjacent spaces shall be based on the educational needs as determined by the LEA and Design Professional.

Stage M-SD-2

Features - Fixed Equipment

- F1 Projection screen
- F2 Curtain
- F3 Curtain and valance
- F4 Operable partition
- F5 Handrail

Features - Loose Furnishings

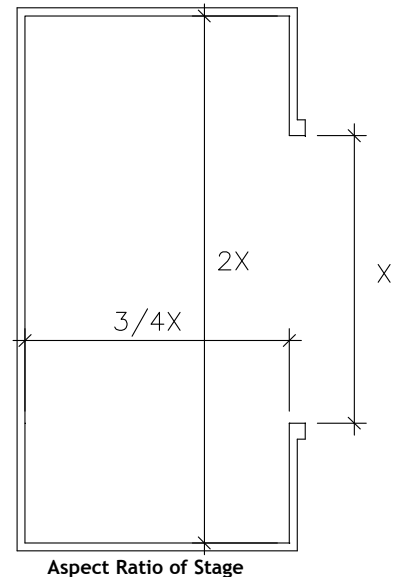
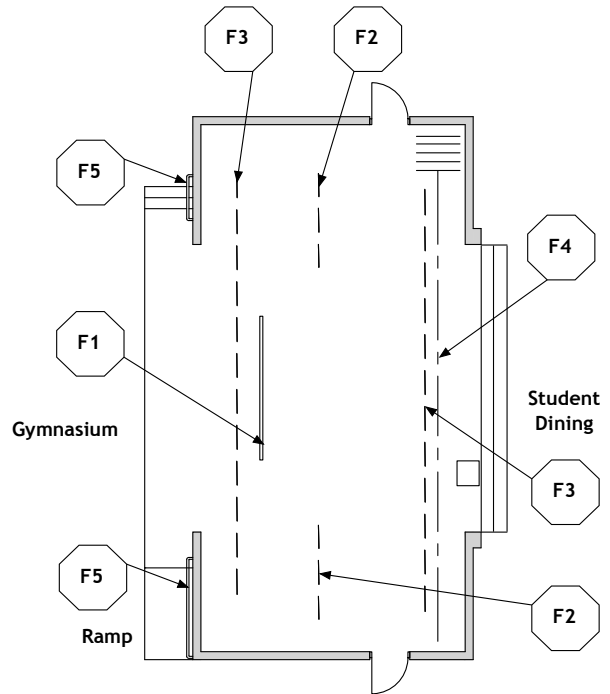
Portable risers

Finishes:

- Flooring - Resilient or wood
- Base - Resilient base
- Ceiling - Suspended, acoustical
- Walls - Painted concrete masonry units

Notes:

1. Electrical - duplex receptacles; single-level switching; telecommunications grounding
2. Technology - video ports and data ports - 1 on each side of proscenium opening
3. Adjacent spaces are listed in Chapter 5



Space Plate

Diagrams are for illustration purposes only. The final size, shape, furniture, features, finishes, and adjacent spaces shall be based on the educational needs as determined by the LEA and Design Professional.

Kitchen M-FS-1

Features - Fixed Equipment

Food Service Equipment

Features - Loose Furnishings

N/A

Finishes:

Flooring - Quarry tile

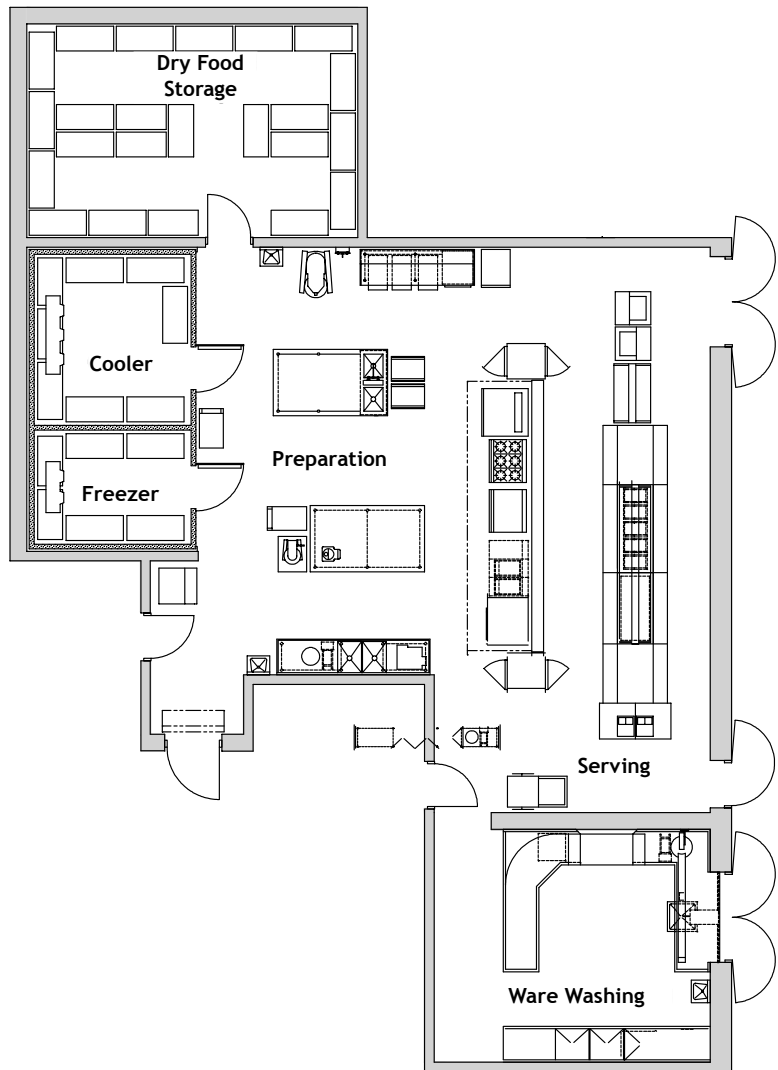
Base - Quarry tile base

Ceiling - Cleanable, suspended, acoustical

Walls - Epoxy-painted concrete masonry units

Notes:

1. Electrical - dual level switching; duplex receptacles; connections to food service equipment
2. Technology - voice port and phone, data port at cash register; clock
3. Plumbing - hand washing lavatory; plumbing and gas connections; connections to food service equipment; floor drains
4. HVAC - kitchen canopy exhaust system
5. Adjacent spaces are listed in Chapter 5



Space Plate

Diagrams are for illustration purposes only. The final size, shape, furniture, features, finishes, and adjacent spaces shall be based on the educational needs as determined by the LEA and Design Professional.

Large Group Restrooms M-BS-1

Features - Fixed Equipment

- F1 Towel dispensers
- F2 Tall wall mirror
- F3 Toilet tissue holder
- F4 Grab bar
- F5 Soap dispensers
- F6 Toilet partitions
- F7 Mirrors
- F8 Shelves

Features - Loose Furnishings

- Waste receptacles

Finishes:

Flooring - Ceramic mosaic tile base

Flooring Options - Porcelain tile or terrazzo tile

Base - Ceramic mosaic tile base

Base Options - Structural glazed tile base or porcelain tile base

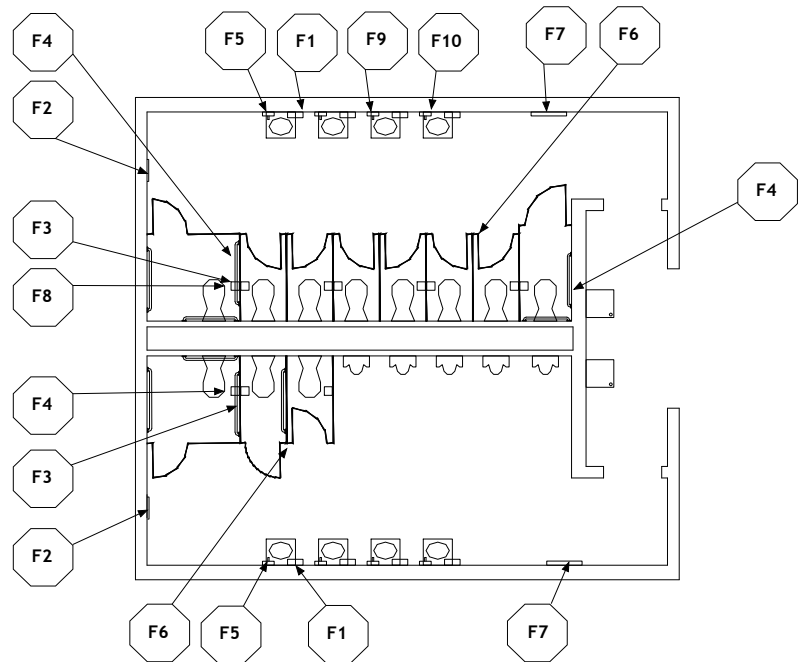
Ceiling - Suspended, acoustical

Ceiling Options - Abuse-resistant gypsum wallboard

Walls - Painted concrete masonry units

Notes:

1. Plumbing - water closets, urinals, lavatories, and hydrants; water coolers; floor drains
2. Electrical - single-level switching; duplex receptacle
3. Adjacent spaces are listed in Chapter 5



Space Plate

Diagrams are for illustration purposes only. The final size, shape, furniture, features, finishes, and adjacent spaces shall be based on the educational needs as determined by the LEA and Design Professional.

Corridors/Vestibules M-BS-2

Features - Fixed Equipment

Fire extinguishers and cabinets
Recessed vinyl floor mats or surface mats

Features - Loose Furnishings

Recycling bins and waste receptacles

Finishes:

Flooring - Resilient, porcelain tile, or terrazzo
Base - Resilient base
Optional - Structural glazed tile
Ceiling - Suspended, acoustical
Optional in vestibules - Abuse-resistant gypsum wallboard
Walls - Painted concrete masonry units

NOTE - At entries adjacent to dining/commons area, match dining/commons flooring.

Notes

1. Electrical - duplex receptacles; dual-level switching
2. Technology - clocks, wireless access points; video ports
3. Plumbing - drinking water coolers
4. Miscellaneous - display cases

Corridors shall be a minimum of 8 feet wide.

Corridors are to meet the egress requirements applicable codes.

Instructional and activity areas shall be accessible by corridors without passing through another instructional or activity area.

Area of vestibules is to be included within area allotted for corridors.

Width of vestibules can be no less than minimum width of adjacent corridor.

Vestibules are to be provided at major entrances/exits.

Space Plate

Diagrams are for illustration purposes only. The final size, shape, furniture, features, finishes, and adjacent spaces shall be based on the educational needs as determined by the LEA and Design Professional.

THIS PAGE HAS BEEN INTENTIONALLY LEFT BLANK.

High School Classroom H-AC-1

Features - Fixed Equipment

- F1 Tall wardrobe with file drawers
- F2 Base & wall cabinets
- F3 Marker board
- F4 Tack board
- F5 Exterior windows
- F6 Low bookcases

Features - Loose Furnishings

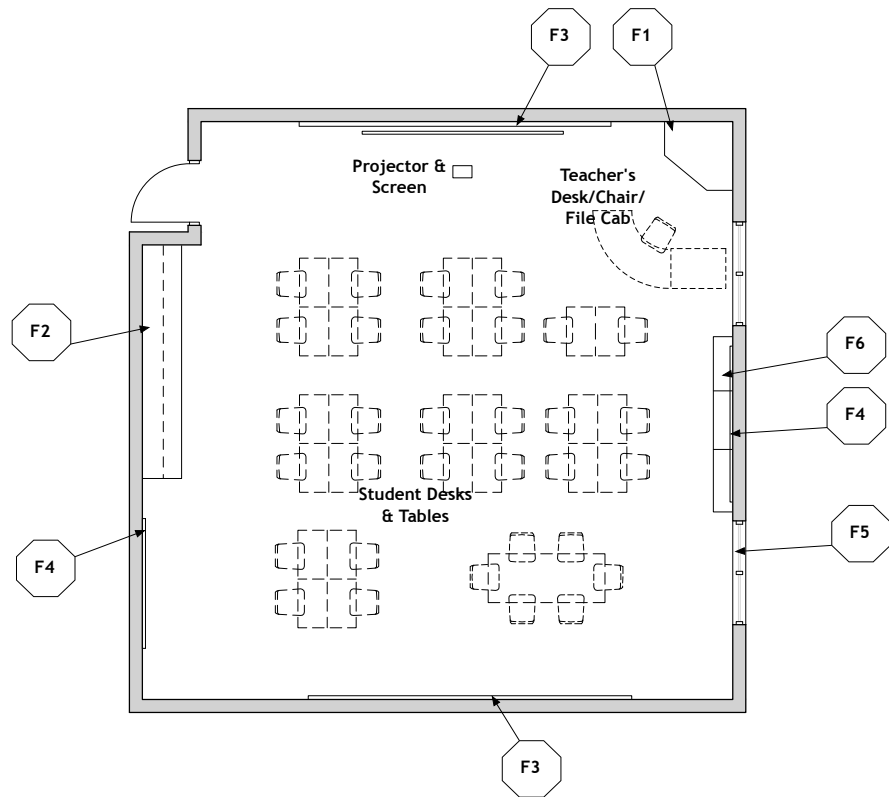
- Student desks/tables
- Computer workstation
- Student chairs
- Teacher's desk and chair
- File cabinet

Finishes:

- Flooring - Carpet; Resilient
- Base - Resilient base
- Ceiling - Suspended, acoustical
- Walls - Painted concrete masonry units

Notes:

1. Electrical - duplex receptacles; multi-level switching
2. Technology - wireless or video port, data port, voice port & phone; data ports for students; clock; ceiling-mounted projector
3. Plumbing - sink with drinking fountain
4. Miscellaneous - operable partition between classrooms is optional
5. Adjacent spaces are listed in Chapter 5



Space Plate

Diagrams are for illustration purposes only. The final size, shape, furniture, features, finishes, and adjacent spaces shall be based on the educational needs as determined by the LEA and Design Professional.

Science Classroom H-AC-2

Features - Fixed Equipment

- F1 Tall wardrobe with file drawers
- F2 Demonstration table/teacher desk
- F3 Marker board
- F4 Tack board
- F5 Perimeter sink base cabinets
- F6 Exterior windows
- F7 Emergency shower/eyewash
- F8 Wall cabinets, lockable
- F9 Towel dispensers
- F10 Eye hooks for demonstrations
- F11 Fume hood and cabinet
- F12 Soap dispensers

Features - Loose Furnishings

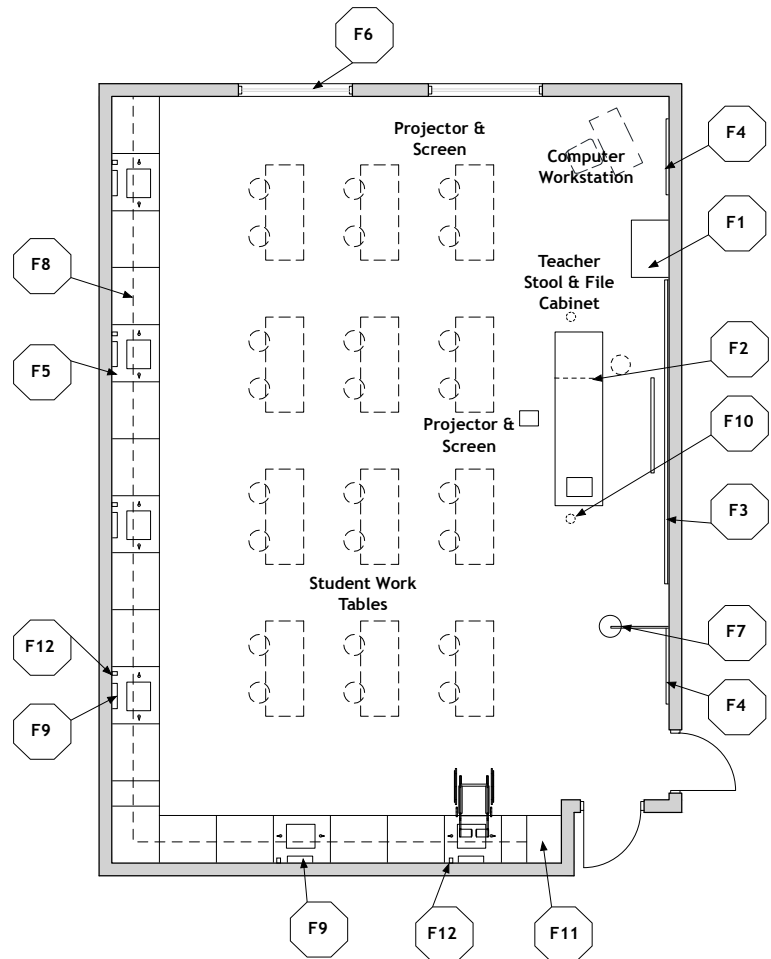
- Student worktables and stools/chairs
- Computer workstation
- Teacher chair or stool
- File cabinet

Finishes:

- Flooring - Resilient
- Base - Resilient base
- Ceiling - Suspended, acoustical
- Walls - Painted concrete masonry units

Notes:

1. Electrical - duplex receptacles at perimeter workstations and teaching wall; multi-level switching
2. Technology - video port, data port, voice port & phone; data ports for students; clock; ceiling-mounted projector
3. Plumbing - emergency shower/eyewash; gas, plumbing, and compressed air connections; master shutoff for gas; sinks
4. Adjacent spaces are listed in Chapter 5



Space Plate

Diagrams are for illustration purposes only. The final size, shape, furniture, features, finishes, and adjacent spaces shall be based on the educational needs as determined by the LEA and Design Professional.

Applications/Career & Technical Education Lab H-AC-3

Features - Fixed Equipment

- F1 Tall wardrobe with file drawers
- F2 Base cabinet with sink
- F3 Wall cabinets
- F4 Marker board
- F5 Tack board
- F6 Emergency shower/eyewash
- F7 Exterior windows
- F8 Demonstration table and sink
- F9 Towel dispenser

Features - Loose Furnishings

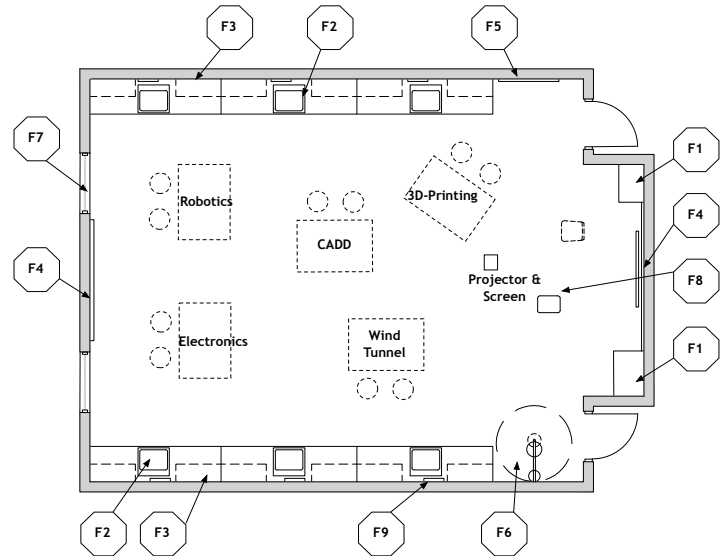
- Student tables
- Student chairs or stools
- Teacher's desk and chair

Finishes:

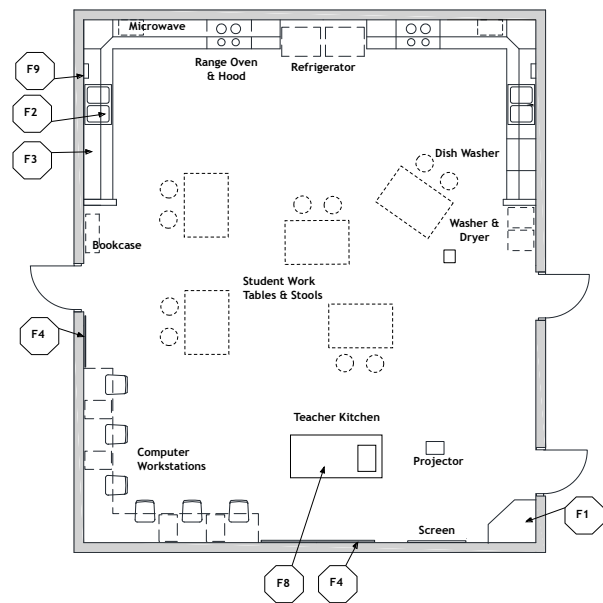
- Flooring - Resilient
- Base - Resilient base
- Ceiling - Suspended, acoustical
- Walls - Painted concrete masonry units

Notes:

1. Electrical - duplex receptacles; multi-level switching
2. Technology - wireless or video port, data port, voice port & phone; data ports for students; clock; ceiling-mounted projector
3. Plumbing - sink with drinking fountain
4. Miscellaneous - operable partition between classrooms is optional
5. Applications labs are flexible, adaptable spaces intended for regular and career & technical educational instruction such as Science, Electronics, Business Education, Culinary Arts, Multi-media Production, Robotics/Engineering or CAD programs. The final configuration, equipment, furnishings, and fixtures are to be determined by the LEA and Design Professional.
6. Adjacent spaces are listed in Chapter 5



Culinary Arts



Space Plate

Diagrams are for illustration purposes only. The final size, shape, furniture, features, finishes, and adjacent spaces shall be based on the educational needs as determined by the LEA and Design Professional.

Science Prep H-AC-4

Features - Fixed Equipment

- F1 Tack board
- F2 Lab station with sink
- F3 Drying rack with pegs
- F4 Towel dispenser
- F5 Wall cabinets
- F6 Storage cabinets for acid, ventilated
- F7 Storage cabinets for flammables
- F8 Tall storage cabinets
- F9 Fume hood
- F10 Emergency eyewash
- F11 Soap dispenser

Features - Loose Furnishings

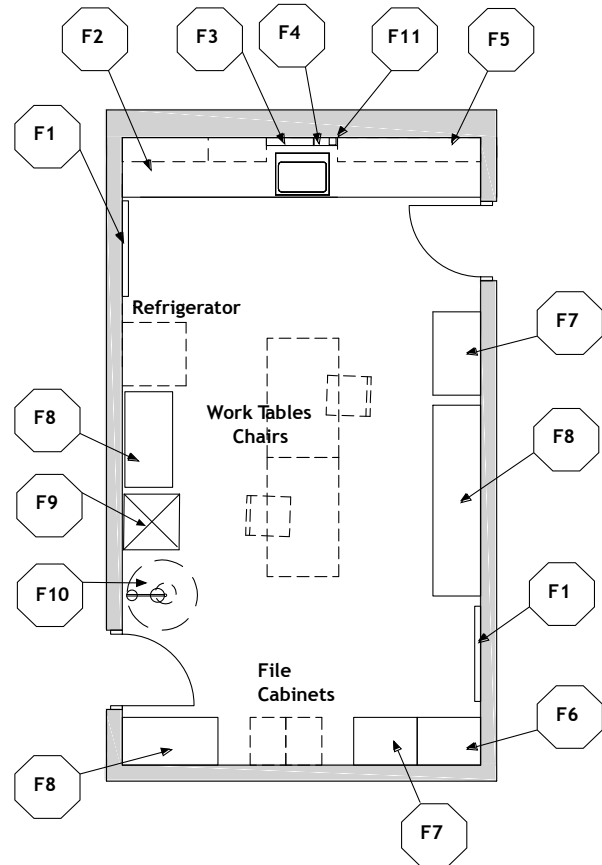
- Worktables with chemical-resistant top
- Chairs or stools
- File cabinet
- Refrigerator/freezer

Finishes:

- Flooring - Resilient
- Base - Resilient base
- Ceiling - Suspended, acoustical
- Walls - Painted concrete masonry units

Notes:

1. Electrical - duplex receptacle under work table; duplex receptacles; single-level switching
2. Technology - video port, data port, voice port & phone; clock
3. Plumbing - emergency eyewash connection; gas, plumbing, and compressed air connections; acid waste system Miscellaneous - operable partition between classrooms is optional
4. Adjacent spaces are listed in Chapter 5



Space Plate

Diagrams are for illustration purposes only. The final size, shape, furniture, features, finishes, and adjacent spaces shall be based on the educational needs as determined by the LEA and Design Professional.

Special Education/Resource H-SE-1

Features - Fixed Equipment

- F1 Exterior windows
- F2 Tall wardrobe with file drawers
- F3 Base and wall cabinets
- F4 Sink base cabinet
- F5 Marker board
- F6 Tack board
- F7 Towel dispenser
- F8 Soap dispenser
- F9 Operable partition
- F10 Open casework for coats, backpacks, etc. with wall cabinets above

Features - Loose Furnishings

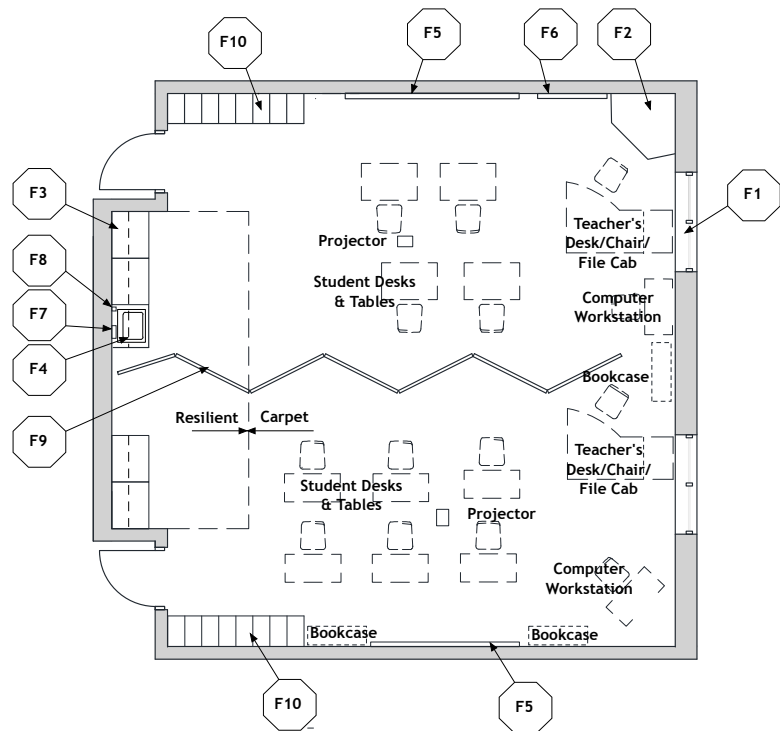
- Student desks/tables
- Computer workstation
- Student chairs
- Teacher's desk and chair
- File cabinet
- Mobile bookcases or storage unit

Finishes:

- Flooring - Carpet; Resilient - 4' width in front of cabinets
- Base - Resilient base
- Ceiling - Suspended, acoustical
- Walls - Painted concrete masonry units

Notes:

1. Plumbing - sink
2. Electrical - duplex receptacles; multi-level switching
3. Technology - video port, data port, voice port & phone; data ports for students; clock; ceiling-mounted projector
4. Miscellaneous - operable partition between classrooms is optional
5. Adjacent spaces are listed in Chapter 5



Space Plate

Diagrams are for illustration purposes only. The final size, shape, furniture, features, finishes, and adjacent spaces shall be based on the educational needs as determined by the LEA and Design Professional.

Reading Room/Circulation H-MC-1

Features - Fixed Equipment

- F1 Shelving
- F2 Circulation desk casework
- F3 Tack board
- F4 Marker board
- F5 Exterior windows

Features - Loose Furnishings

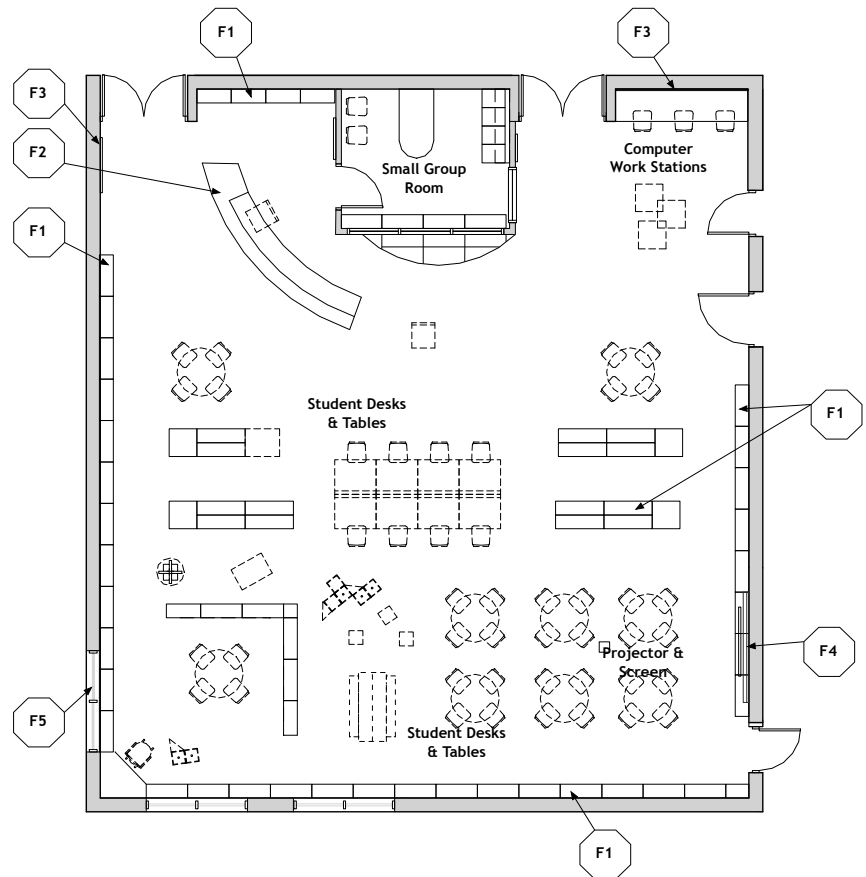
- Student tables and chairs
- Computer workstation
- Circulation desk task chair
- Atlas stand
- Paperback bookrack
- Modular picture book display
- Movable bookshelves

Finishes:

- Flooring - Carpet
- Base - Resilient base
- Ceiling - Suspended, acoustical
- Walls - Painted concrete masonry units

Notes:

1. Electrical - duplex receptacles; single-level switching
2. Technology - video ports and video display devices, voice port & phone; data ports for students; data port for library automation system; clock; ceiling-mounted projector
3. Miscellaneous - various sizes of casework for dictionaries, magazines, card catalog, etc.
4. Adjacent spaces are listed in Chapter 5



Space Plate

Diagrams are for illustration purposes only. The final size, shape, furniture, features, finishes, and adjacent spaces shall be based on the educational needs as determined by the LEA and Design Professional.

Visual Art Room H-VA-1

Features - Fixed Equipment

- F1 Sink base cabinet, 30" deep
- F2 Tall wardrobe with file drawers
- F3 Base cabinets, 30" deep
- F4 Tack board
- F5 Marker board
- F6 Exterior windows
- F7 Tall storage cabinets
- F8 Wall cabinets
- F9 Towel dispensers
- F10 Soap dispensers

Features - Loose Furnishings

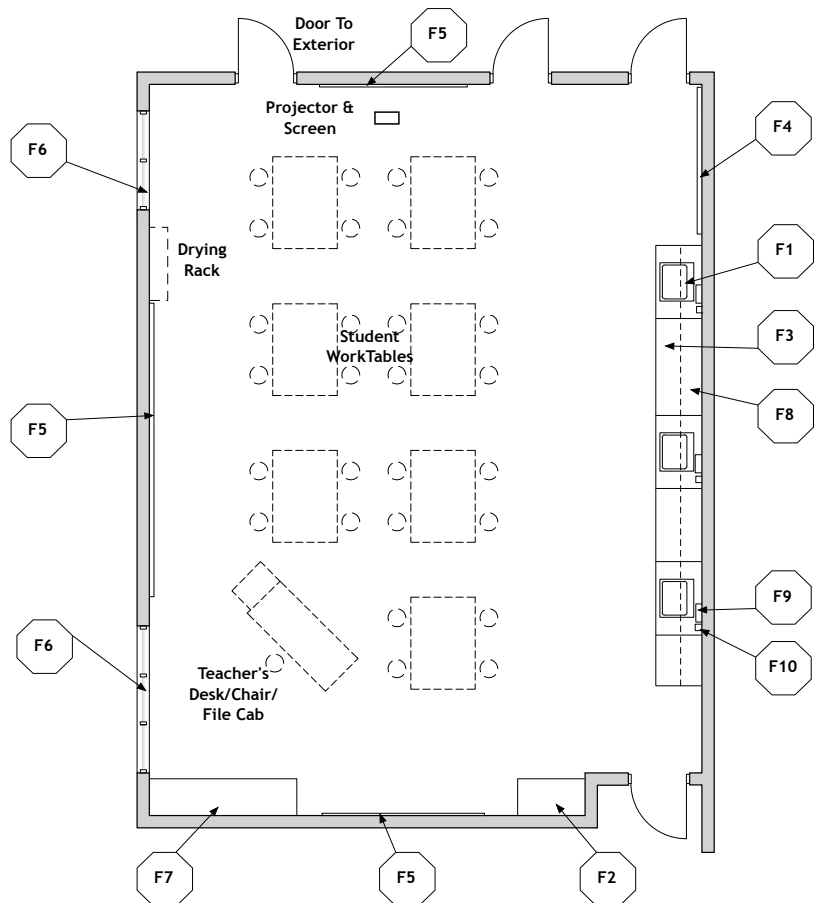
- Student worktables
- Student chairs or stools
- Teacher's desk and chair
- File cabinet
- Pottery wheel

Finishes:

- Flooring - Resilient or sealed concrete
- Base - Resilient base
- Ceiling - Suspended, acoustical
- Walls - Painted concrete masonry units

Notes:

1. Electrical - duplex receptacles; multi-level switching; track lighting
2. Technology - video port, data port, voice port & phone; clock; ceiling-mounted projector; data ports for students
3. Plumbing - sinks with solids interceptor
4. HVAC - manually operated exhaust air system
5. Adjacent spaces are listed in Chapter 5



Space Plate

Diagrams are for illustration purposes only. The final size, shape, furniture, features, finishes, and adjacent spaces shall be based on the educational needs as determined by the LEA and Design Professional.

Instrumental Music Room H-MU-1

Features - Fixed Equipment

- F1 Projection screen
- F2 Marker board
- F3 Tack board
- F4 Bookcases
- F5 Base cabinet with sink
- F6 Towel dispenser
- F7 Tall wardrobe
- F8 Audio equipment
- F9 Acoustic wall panels

Features - Loose Furnishings

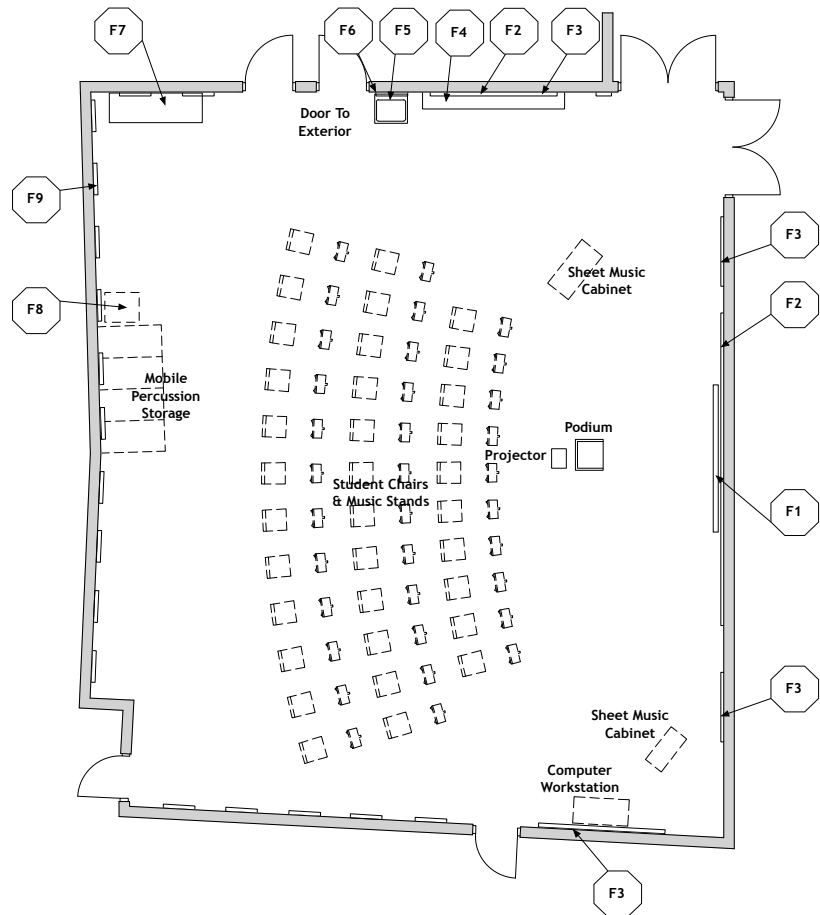
- Conducting podium
- Mobile percussion instrument storage cabinet
- Computer workstation furniture
- Mobile sheet music cabinet
- Music chairs
- Music stands
- Mobile percussion storage

Finishes:

- Flooring - Carpet
- Optional - Resilient
- Base - Resilient base
- Ceiling - Suspended, acoustical
- Walls - Painted concrete masonry units
- Walls - Acoustical wall treatment

Notes:

1. Electrical - duplex receptacles; multi-level switching; telecommunications grounding
2. Technology - video port, voice port & phone; data ports for students; clock; ceiling-mounted projector
3. Plumbing - drinking water cooler; 10" deep sink
4. Miscellaneous - piano; doors to have acoustic trim accessories; acoustic wall panels
5. Adjacent spaces are listed in Chapter 5



Space Plate

Diagrams are for illustration purposes only. The final size, shape, furniture, features, finishes, and adjacent spaces shall be based on the educational needs as determined by the LEA and Design Professional.

Vocal Music Room H-MU-2

Features - Fixed Equipment

- F1 Projection screen
- F2 Marker board
- F3 Tack board
- F4 Bookcases
- F5 Base cabinet with sink
- F6 Towel dispenser
- F7 Tall wardrobe
- F8 Audio equipment
- F9 Acoustic wall panels

Features - Loose Furnishings

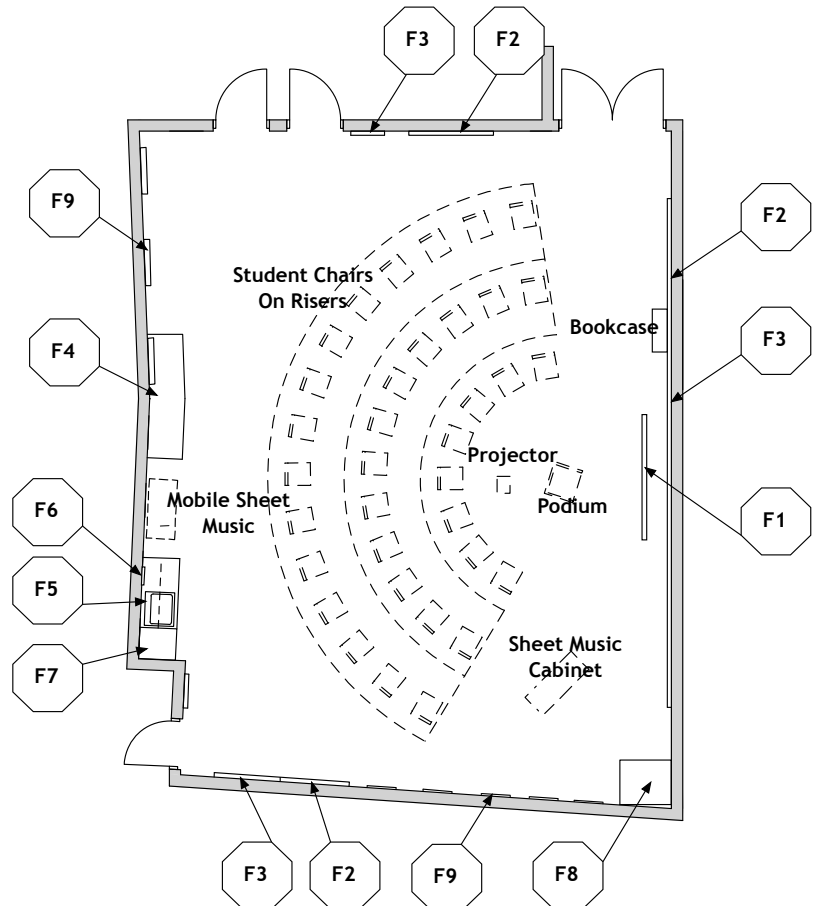
- Conducting podium
- Computer workstation furniture
- Mobile sheet music cabinet
- Music chairs
- Portable risers

Finishes:

- Flooring - Carpet
- Optional - Resilient
- Base - Resilient base
- Ceiling - Suspended, acoustical
- Walls - Painted concrete masonry units
- Walls - Acoustical wall treatment

Notes:

1. Electrical - duplex receptacles; multi-level switching; telecommunications grounding
2. Technology - video port, voice port & phone; data ports for students; clock; ceiling-mounted projector
3. Miscellaneous - piano
4. Adjacent spaces are listed in Chapter 5



Space Plate

Diagrams are for illustration purposes only. The final size, shape, furniture, features, finishes, and adjacent spaces shall be based on the educational needs as determined by the LEA and Design Professional.

Gymnasium H-PE-1

Features - Fixed Equipment

- F1 Basketball backstops - glass, adjustable height
- F2 Volleyball sleeves and standards on a cart
- F3 Safety wall wainscot
- F4 Divider gym curtain
- F5 Chin-up bar
- F6 Scorer table
- F7 Wrestling mat hoist
- F8 Telescoping bleachers

Features - Loose Furnishings

- Portable marker board

Miscellaneous:

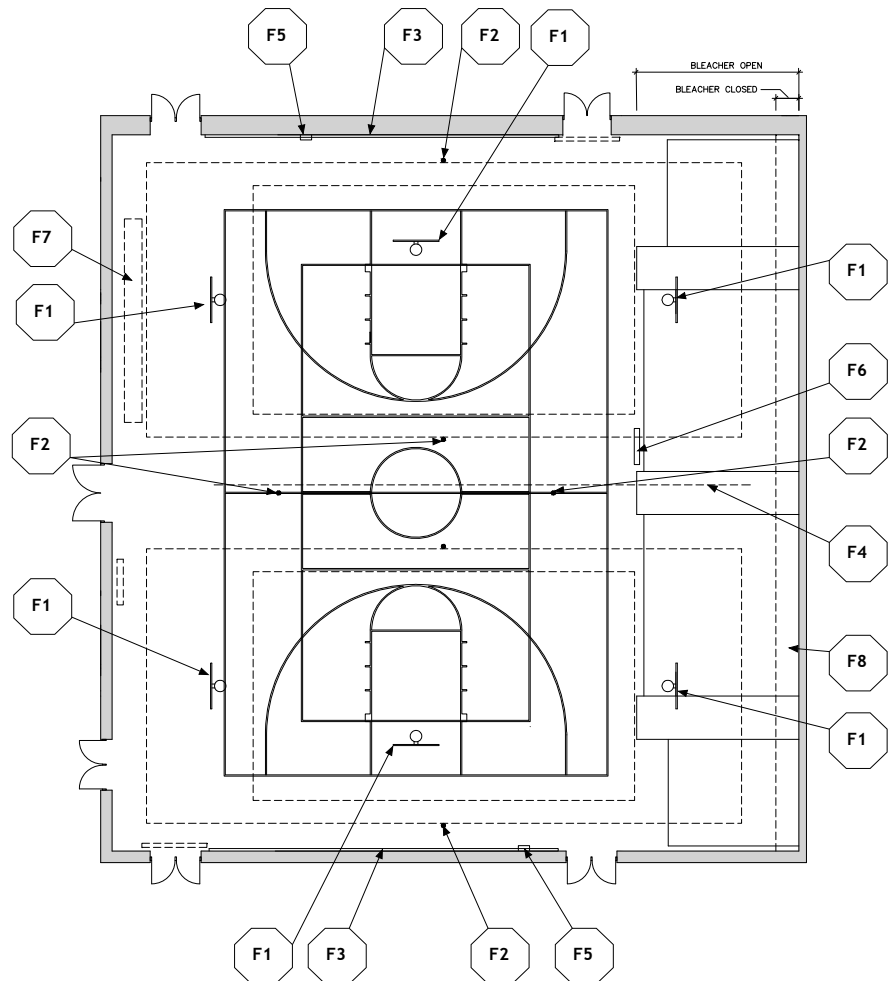
- Accessible seating
- Court markings
- Wire guards on light fixtures and wall-mounted electrical devices

Finishes:

- Flooring - Wood flooring
- Base - Ventilated resilient base
- Ceiling - Painted, exposed structure
- Walls - Painted concrete masonry units
- Sound absorbing concrete masonry units on 2 walls

Notes:

1. Electrical: duplex receptacles; single-level switching; scoreboard; telecommunications grounding
2. Technology: video ports, monitor with cart; voice port; data ports; clocks with wire guards
3. Adjacent spaces are listed in Chapter 5



Space Plate

Diagrams are for illustration purposes only. The final size, shape, furniture, features, finishes, and adjacent spaces shall be based on the educational needs as determined by the LEA and Design Professional.

Auxiliary Gymnasium H-PE-2

Features - Fixed Equipment

- F1 Basketball backstops - glass, adjustable height
- F2 Volleyball sleeves and standards on a cart
- F3 Safety wall wainscot
- F4 Divider gym curtain
- F5 Chin-up bar

Features - Loose Furnishings

- Portable marker board

Miscellaneous:

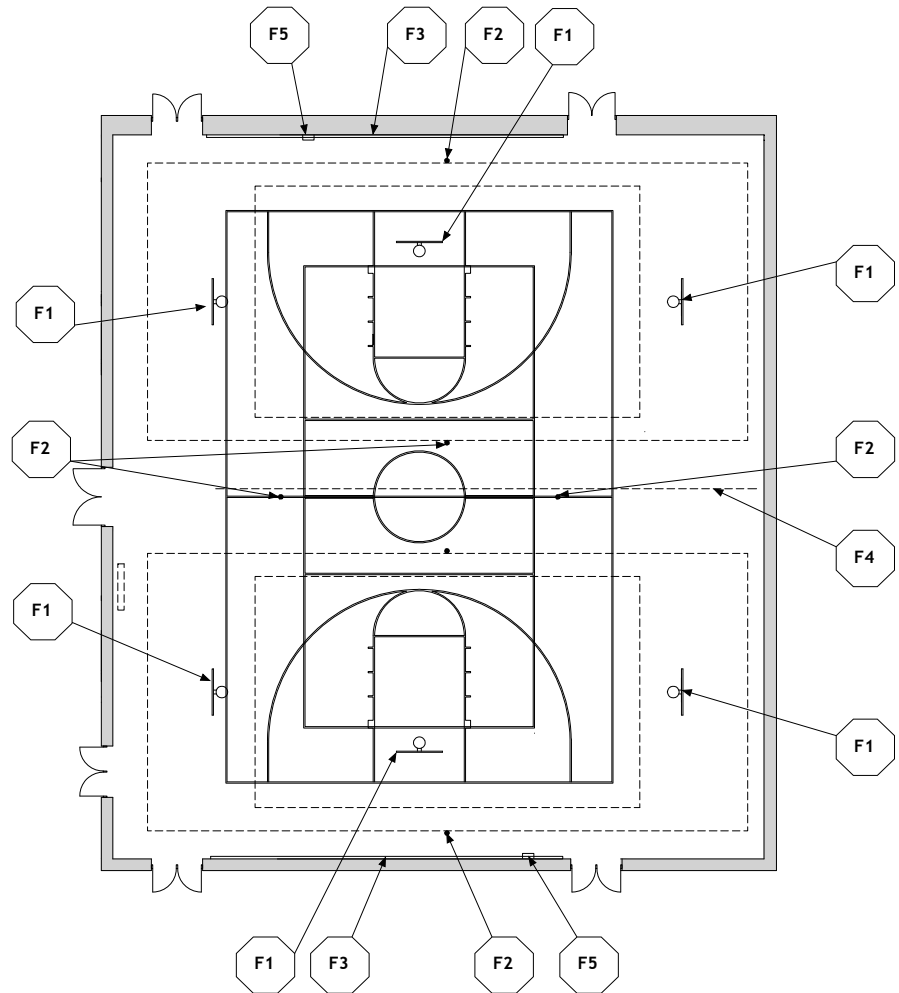
- Court markings
- Wire guards on light fixtures and wall-mounted electrical devices

Finishes:

- Flooring - Wood flooring
- Base - Ventilated resilient base
- Ceiling - Painted, exposed structure
- Walls - Painted concrete masonry units
- Sound absorbing concrete masonry units on 2 walls

Notes:

1. Electrical: duplex receptacles; single-level switching; scoreboard; telecommunications grounding
2. Technology: video ports, monitor with cart; voice port; data ports; clocks with wire guards
3. Adjacent spaces are listed in Chapter 5



Space Plate

Diagrams are for illustration purposes only. The final size, shape, furniture, features, finishes, and adjacent spaces shall be based on the educational needs as determined by the LEA and Design Professional.

Auditorium H-PA-1

Features - Fixed Equipment

- F1 Acoustical wall treatment
- F2 Accessible wheelchair locations

Features - Loose Furnishings

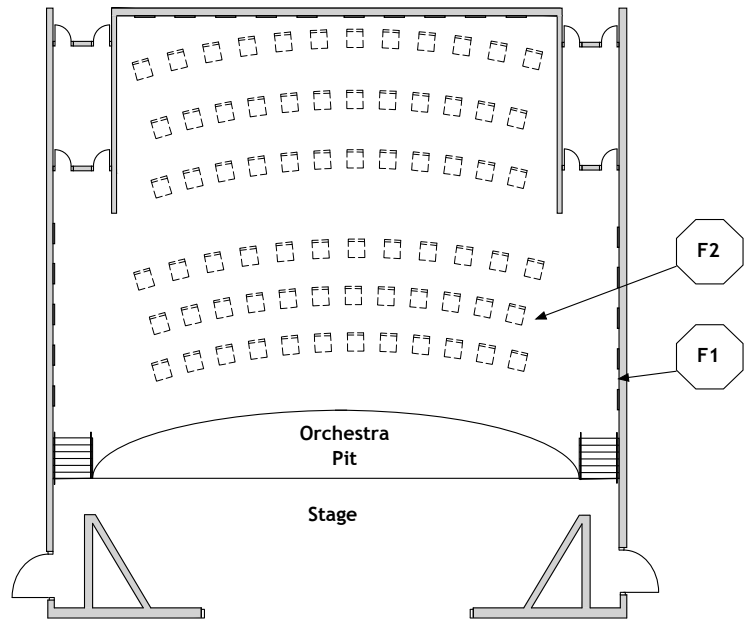
Fixed auditorium seating

Finishes:

Flooring - Carpet and sealed concrete
 Base - Resilient base
 Ceiling - Painted, exposed structure; sound baffles
 Walls - Brick; painted concrete masonry units; wood trim

Notes:

1. Electrical - special theatrical sound and lighting systems; catwalk
2. Sound system - sound equipment, control panel, and speakers
3. Adjacent spaces are listed in Chapter 5



Space Plate

Diagrams are for illustration purposes only. The final size, shape, furniture, features, finishes, and adjacent spaces shall be based on the educational needs as determined by the LEA and Design Professional.

Orchestra Pit H-PA-2

Features - Fixed Equipment

Cover to extend stage

Features - Loose Furnishings

Music stands

Music chairs

Conductor podium

Finishes:

Flooring - Resilient

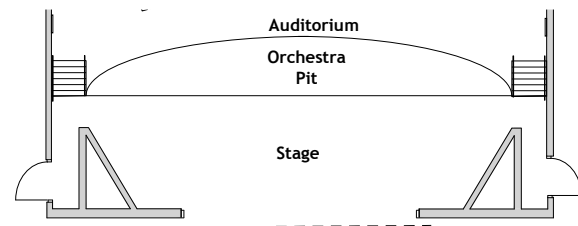
Base - Resilient base

Ceiling - Painted, exposed structure

Walls - Painted concrete masonry units

Notes:

1. Electrical - special lighting; adequate receptacles for instruments and lighting
2. Technology - each video, voice, data port, audio output
3. Adjacent spaces are listed in Chapter 5



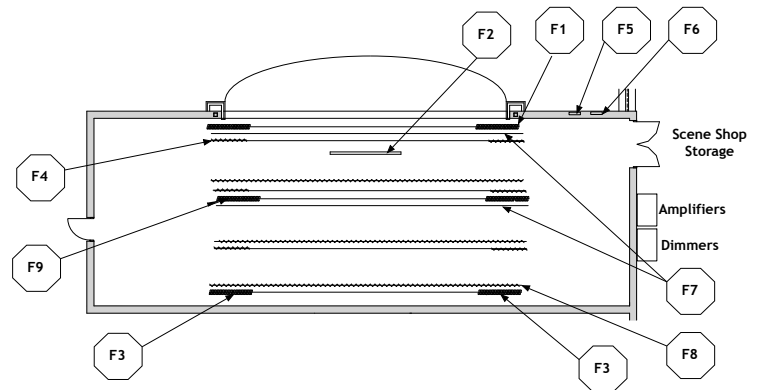
Space Plate

Diagrams are for illustration purposes only. The final size, shape, furniture, features, finishes, and adjacent spaces shall be based on the educational needs as determined by the LEA and Design Professional.

Stage Area H-PA-3

Features - Fixed Equipment

- F1 Front curtain, track, and valance or grand border
- F2 Projection screen
- F3 Rear curtain with track
- F4 Leg curtains, tracks, and/or pivots
- F5 Sound control console receptacle
- F6 Lighting control console receptacle
- F7 Light fixture support
- F8 Border curtains
- F9 Mid-stage traveler



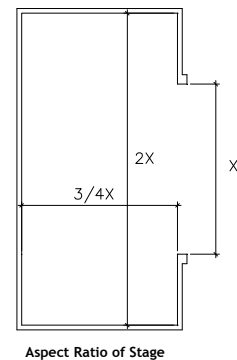
Features - Loose Furnishings

N/A

Finishes:

- Flooring - Stage: Softwood
- Thrust: Hardwood
- Base - Ventilated, resilient base
- Ceiling - Painted exposed structure
- Walls - Painted concrete masonry units

Proportions are recommended - not mandatory.



Notes:

1. Electrical - Stage dimming system; theatrical lighting; duplex receptacles; telecommunications grounding
2. Technology - video ports and data ports - 1 on each side of proscenium opening
3. Adjacent spaces are listed in Chapter 5

Space Plate

Diagrams are for illustration purposes only. The final size, shape, furniture, features, finishes, and adjacent spaces shall be based on the educational needs as determined by the LEA and Design Professional.

Student Dining H-SD-1

Features - Fixed Equipment

N/A

Features - Loose Furnishings

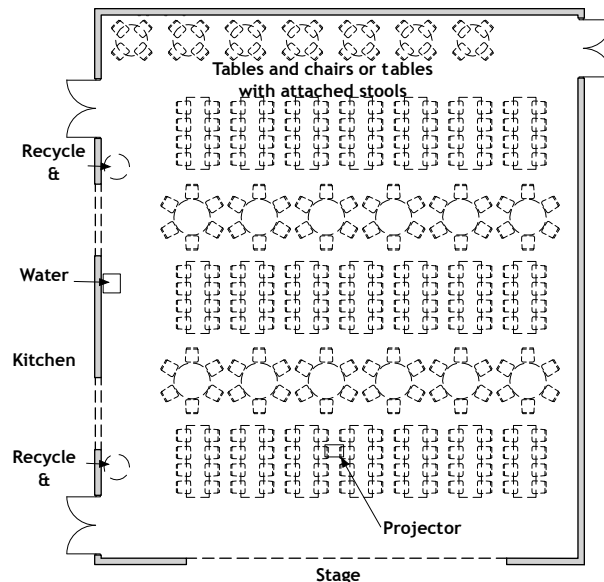
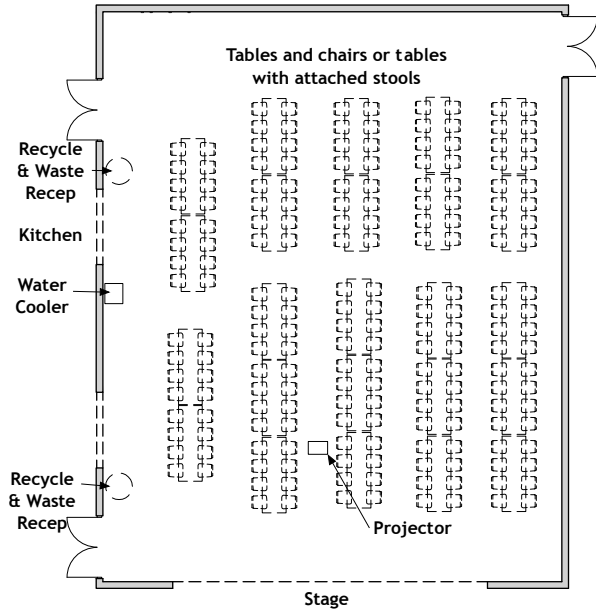
- Tables and chairs or tables with attached stools
- Large recycle & waste receptacles
- Folding or high-density stack chairs
- Carts for chairs

Finishes:

- Flooring - Resilient, porcelain tile, or terrazzo tile
- Base - Resilient base, Porcelain tile
- Ceiling - Suspended, acoustical
- Walls - Painted concrete masonry units

Notes:

1. Electrical - duplex receptacles; multi-level switching; telecommunications grounding
2. Technology - video ports; data ports; clock; ceiling-mounted projector
3. Sound system - sound equipment, control panel, and speakers
4. Plumbing - drinking water cooler
5. Adjacent spaces are listed in Chapter 5



Space Plate

Diagrams are for illustration purposes only. The final size, shape, furniture, features, finishes, and adjacent spaces shall be based on the educational needs as determined by the LEA and Design Professional.

Stage H-SD-2

Features - Fixed Equipment

- F1 Projection screen
- F2 Curtain
- F3 Curtain and valance
- F4 Operable partition
- F5 Handrail

Features - Loose Furnishings

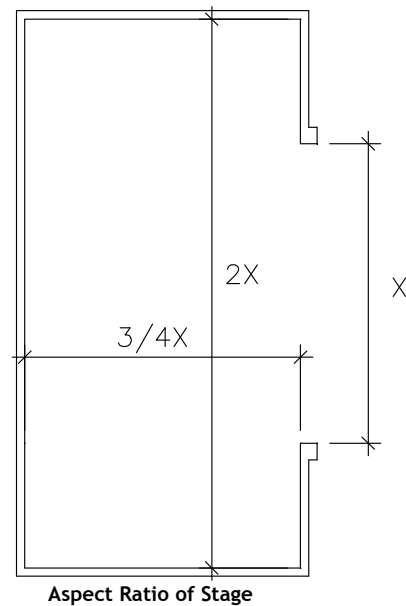
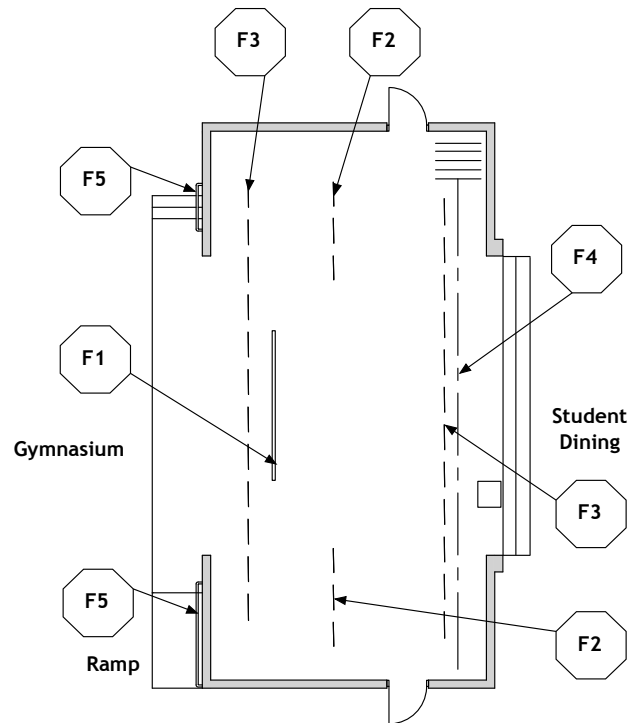
Portable risers

Finishes:

- Flooring - Resilient or wood
- Base - Resilient base
- Ceiling - Suspended, acoustical
- Walls - Painted concrete masonry units

Notes

1. Electrical - duplex receptacles; single-level switching; telecommunications grounding
2. Technology - video ports and data ports - 1 on each side of proscenium opening
3. Adjacent spaces are listed in Chapter 5



Space Plate

Diagrams are for illustration purposes only. The final size, shape, furniture, features, finishes, and adjacent spaces shall be based on the educational needs as determined by the LEA and Design Professional.

Kitchen H-FS-1

Features - Fixed Equipment

Food Service Equipment

Features - Loose Furnishings

N/A

Finishes:

Flooring - Quarry tile

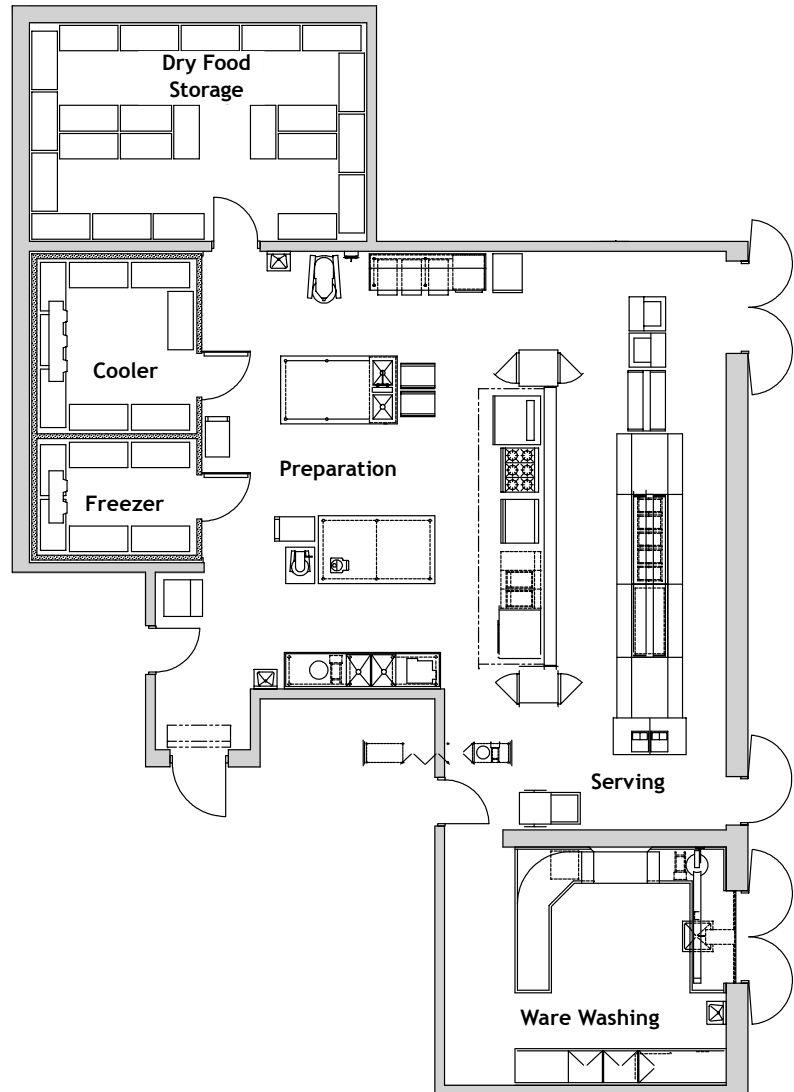
Base - Quarry tile base

Ceiling - Cleanable, suspended, acoustical

Walls - Epoxy-painted concrete masonry units

Notes:

1. Electrical - dual level switching; duplex receptacles; connections to food service equipment
2. Technology - voice port and phone, data port at cash register; clock
3. Plumbing - hand washing lavatory; plumbing and gas connections; connections to food service equipment; floor drains
4. HVAC - kitchen canopy exhaust system
5. Adjacent spaces are listed in Chapter 5



Space Plate

Diagrams are for illustration purposes only. The final size, shape, furniture, features, finishes, and adjacent spaces shall be based on the educational needs as determined by the LEA and Design Professional.

Large Group Restrooms H-BS-1

Features - Fixed Equipment

- F1 Towel dispensers
- F2 Tall wall mirror
- F3 Toilet tissue holder
- F4 Grab bar
- F5 Soap dispensers
- F6 Toilet partitions
- F7 Mirrors
- F8 Shelves

Features - Loose Furnishings

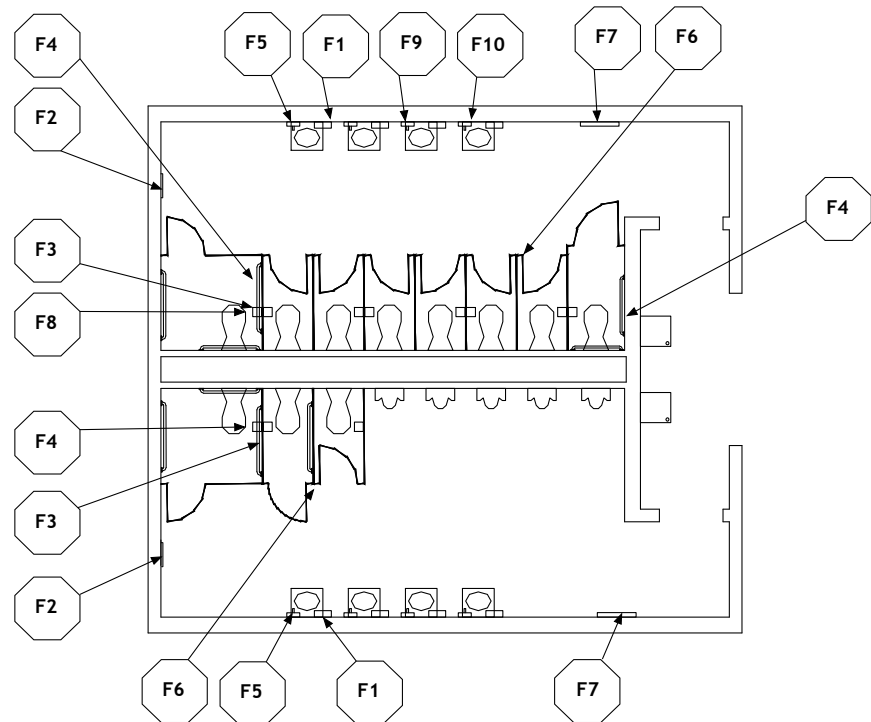
- Waste receptacles

Finishes:

- Flooring - Ceramic mosaic tile base
- Flooring Options - Porcelain tile or terrazzo tile
- Base - Ceramic mosaic tile base
- Base Options - Structural glazed tile base or porcelain tile base
- Ceiling - Suspended, acoustical
- Ceiling Options - Abuse-resistant gypsum wallboard
- Walls - Painted concrete masonry units

Notes:

1. Plumbing - water closets, urinals, lavatories, and hydrants; water coolers; floor drains
2. Electrical - single-level switching; duplex receptacle
3. Adjacent spaces are listed in Chapter 5



Space Plate

Diagrams are for illustration purposes only. The final size, shape, furniture, features, finishes, and adjacent spaces shall be based on the educational needs as determined by the LEA and Design Professional.

Corridors/Vestibules

H-BS-2

Features - Fixed Equipment

Fire extinguishers and cabinets
Recessed vinyl floor mats or surface mats

Features - Loose Furnishings

Recycling bins and waste receptacles

Finishes:

Flooring - Resilient, porcelain tile, or terrazzo
Base - Resilient base
Optional - Structural glazed tile
Ceiling - Suspended, acoustical
Optional in vestibules - Abuse-resistant gypsum wallboard
Walls - Painted concrete masonry units

NOTE - At entries adjacent to dining/commons area, match dining/commons flooring.

Notes:

1. Electrical - duplex receptacles; dual-level switching
2. Technology - clocks, wireless access points; video ports
3. Plumbing - drinking water coolers
4. Miscellaneous - display cases

Corridors shall be a minimum of 8 feet wide.

Corridors are to meet the egress requirements applicable codes.

Instructional and activity areas shall be accessible by corridors without passing through another instructional or activity area.

Area of vestibules is to be included within area allotted for corridors.

Width of vestibules can be no less than minimum width of adjacent corridor.

Minimum corridor length recommended is 8 feet between doors.

Vestibules are to be provided at major entrances/exits.

Space Plate

Diagrams are for illustration purposes only. The final size, shape, furniture, features, finishes, and adjacent spaces shall be based on the educational needs as determined by the LEA and Design Professional.

THIS PAGE HAS BEEN INTENTIONALLY LEFT BLANK.