

## WHY IS THE CONNECTICUT FOREST RESOURCE ASSESSMENT AND STRATEGY IMPORTANT TO YOU?

In order to continue to receive federal funds for certain programs, the Food, Conservation, and Energy Act of 2008 (2008 Federal Farm Bill) required each state to complete a Statewide Forest Resource Assessment and Strategy (A & S).

Connecticut programs benefitting from funding include:

**Forest Health:** monitoring and managing harmful forest pests.

**National Fire Plan:** training for local wildland fire fighters, administering grants to fire departments for wildfire suppression readiness, and maintaining a nationally deployable wildfire response team.

**Forest Stewardship:** providing education and outreach to family forest owners encouraging them to conserve and maintain their forest as forest.

**Urban and Community Forestry:** improving urban and community forests through outreach and support at the local level, including grants to municipalities and non-profits.

**Conservation Education:** educating the next generation of environmental stewards through Project Learning Tree and supporting the No Child Left Inside<sup>®</sup> initiative.

**Forest Legacy:** protecting working forests; forests that protect water quality, provide habitat, forest products, opportunities for recreation and other public benefits through placement of conservation easements.

Connecticut's A & S is a guidance document for conservation partners in Connecticut. It identifies and encourages action on the most important issues associated with the state's forests.

The components are as follows:

### Forest Assessment

- Used to provide a baseline for forest resources in Connecticut;
- Used to identify key forest related issues and priorities;
- Follows the seven criteria of sustainability as listed in the Montreal Process Criterion and Indicators; and
- Identifies opportunities to promote sustainability that were recognized during the assessment process.

### Issues

Issues were derived from stakeholder input during the development of the 2004-2013 Connecticut Statewide Forest Resource Plan. The results have been included in the A & S, and have acted as a guide for the development of the Strategy section of the A & S.

### Strategies and Opportunities

Connecticut held a series of Forest Roundtables in 2009 and 2010 to provide public input for this document. Over 260 individuals participated. The roundtable process was used to develop visions, principles, and action steps with strong agreement among stakeholders of forests including various local and regional government entities, non-governmental groups, and individuals.

## KEY IMPLEMENTATION PARTNERS



Connecticut Forest and Park Association  
University of Connecticut (UConn) and  
UConn Cooperative Extension System  
Natural Resources Conservation Service of  
Connecticut  
Connecticut Agricultural Experiment Station  
Audubon Connecticut  
Yale University  
United States Department of Agriculture  
Forest Service  
and  
other forest stakeholders including land  
owners, practitioners, land trusts,  
municipalities, and conservation minded  
non-profit organizations



For More Information Contact:



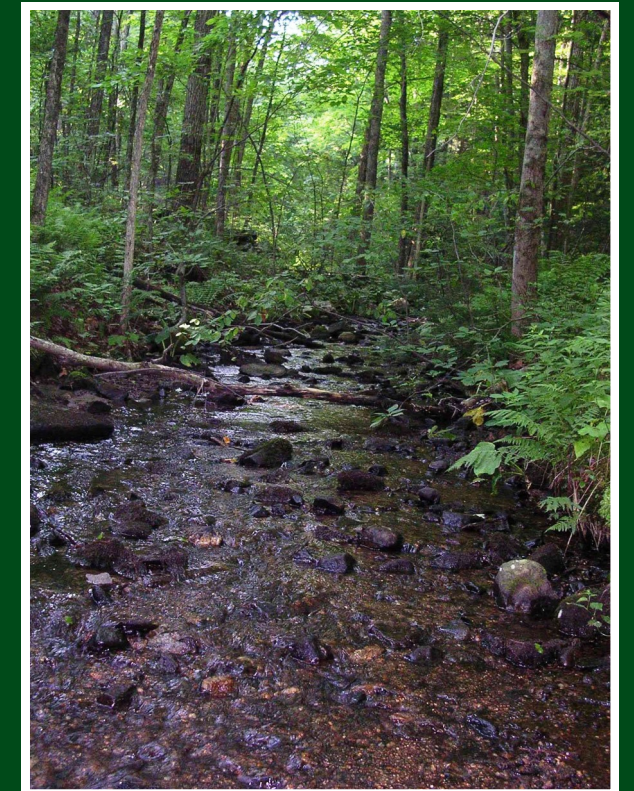
Connecticut Department of  
Energy & Environmental Protection  
79 Elm Street, Hartford, CT 06106-5127  
Phone: (860) 424-3630  
E-mail: [dep.forestry@ct.gov](mailto:dep.forestry@ct.gov)

Full Connecticut Forest Resource Assessment and  
Strategy available online at:  
<http://www.ct.gov/dep/forestry>

*This publication was funded in part through a grant awarded by the Northeastern Area State and Private Forestry, U.S.D.A. Forest Service and the National Association of State Foresters.*

The Department of Energy and Environmental Protection is an affirmative action/equal opportunity employer and service provider. In conformance with the Americans with Disabilities Act, DEEP makes every effort to provide equally effective services for persons with disabilities. Individuals with disabilities who need this information in an alternative format, to allow them to benefit and/or participate in the agency's programs and services, should call 860-424-3035 or e-mail the ADA Coordinator, at [DEP.aoffice@Ct.Gov](mailto:DEP.aoffice@Ct.Gov). Persons who are hearing impaired should call the State of Connecticut relay number 711.

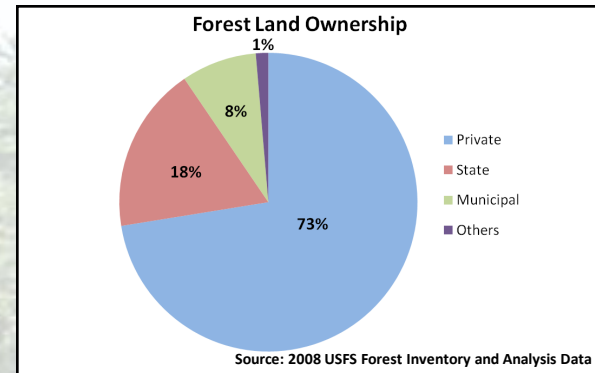
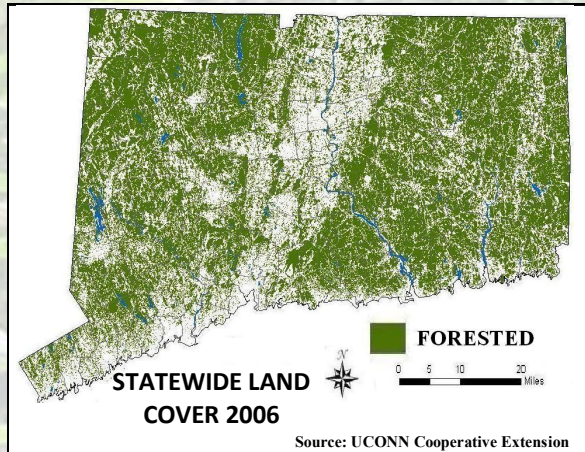
# Connecticut's Forest Resource Assessment and Strategy 2010 - 2015



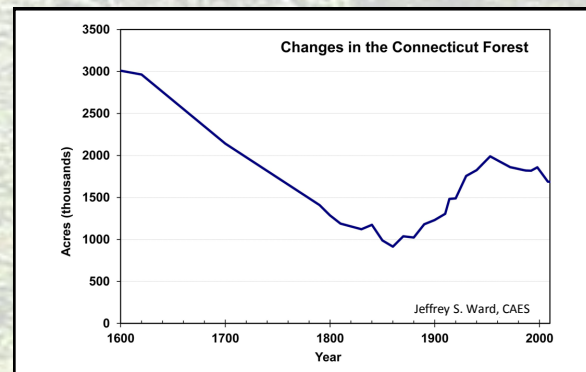


# Building a Better Tomorrow for Connecticut's Forests Today

With close to 60% of its land under forest cover, Connecticut is one of the most heavily forested states in the nation. Ironically, Connecticut is also one of the most densely populated states.



Seventy-three percent of Connecticut's 1,794,000 acres of forestland are privately owned by some 108,000 non-industrial private forest landowners, including many family forest landowners. These private landowners are important to the status of our woodlands.



After the abandonment of farmland and re-growth of forests between the late 1800's and early 1900's, forestland has since declined almost 15%, due to land conversion to other uses.

As forestlands become increasingly broken up into smaller fragments, their ability to provide quality wildlife habitat, clean water, clean air, and economically viable forest products is increasingly diminished.

Connecticut's forests add immensely to the quality of life for the people of the state. Forests:

- Filter the air;
- Safeguard the state's drinking water;
- Provide locally grown forest products and contribute tens of millions of dollars to our economy;
- Provide essential habitat for wildlife;
- Reduce greenhouse gases; and
- Moderate summer heat and winter cold.

All people in Connecticut are connected to the forest. Forests and trees are integral to the character of Connecticut.

Yet, every day our forests are under threat. Invasive insects and diseases and the growing human population continue to stress our forests in unprecedented ways. Conserving a healthy forest for future generations requires increased public awareness and increased public involvement in the solutions to our problems.

## VALUES ASSOCIATED WITH CONNECTICUT'S FORESTLANDS

**Forest Products:** Connecticut's forests add substantially to the economy. The forest industry contributes over \$500 million dollars to Connecticut's annual economy and employs 3,600 people.



**Forest Recreation:** Connecticut's residents love outdoor recreation. Connecticut's State Parks and Forests host over 7.6 million day use visitors in a year.



**Carbon Sequestration:** In urban settings, properly located trees reduce energy consumption, further reducing the release of more carbon to the atmosphere.



**Ecosystem Services:** The vast forestlands of Connecticut are one of the defining features of the state. In addition to providing clean and safe drinking water, important to more than 2 million surface water consumers in Connecticut, these forests provide wildlife habitat, hiking trails, clean air and the awesome display of fall color that draws visitors from all over the globe.



## SIGNIFICANT ISSUES TO CONNECTICUT'S FORESTLANDS

- The growing threat exotic plant (e.g. Asiatic bittersweet) and animal (e.g. Asian longhorned beetle) species present to forest health and the economic value of the forest.
- Fragmentation, parcelization and urbanization of forests, especially as induced by high land values and aging landownership demographics.
- Limited resources for effective management of publicly-owned forests and other lands held for the public good.
- Insufficient tools for motivating and educating landowners and forest managers about forest stewardship.
- Limited opportunities for practicing urban forestry in communities, especially with regards to tree health, liability, education, and volunteerism.
- The need for greater forest-based recreational opportunities.