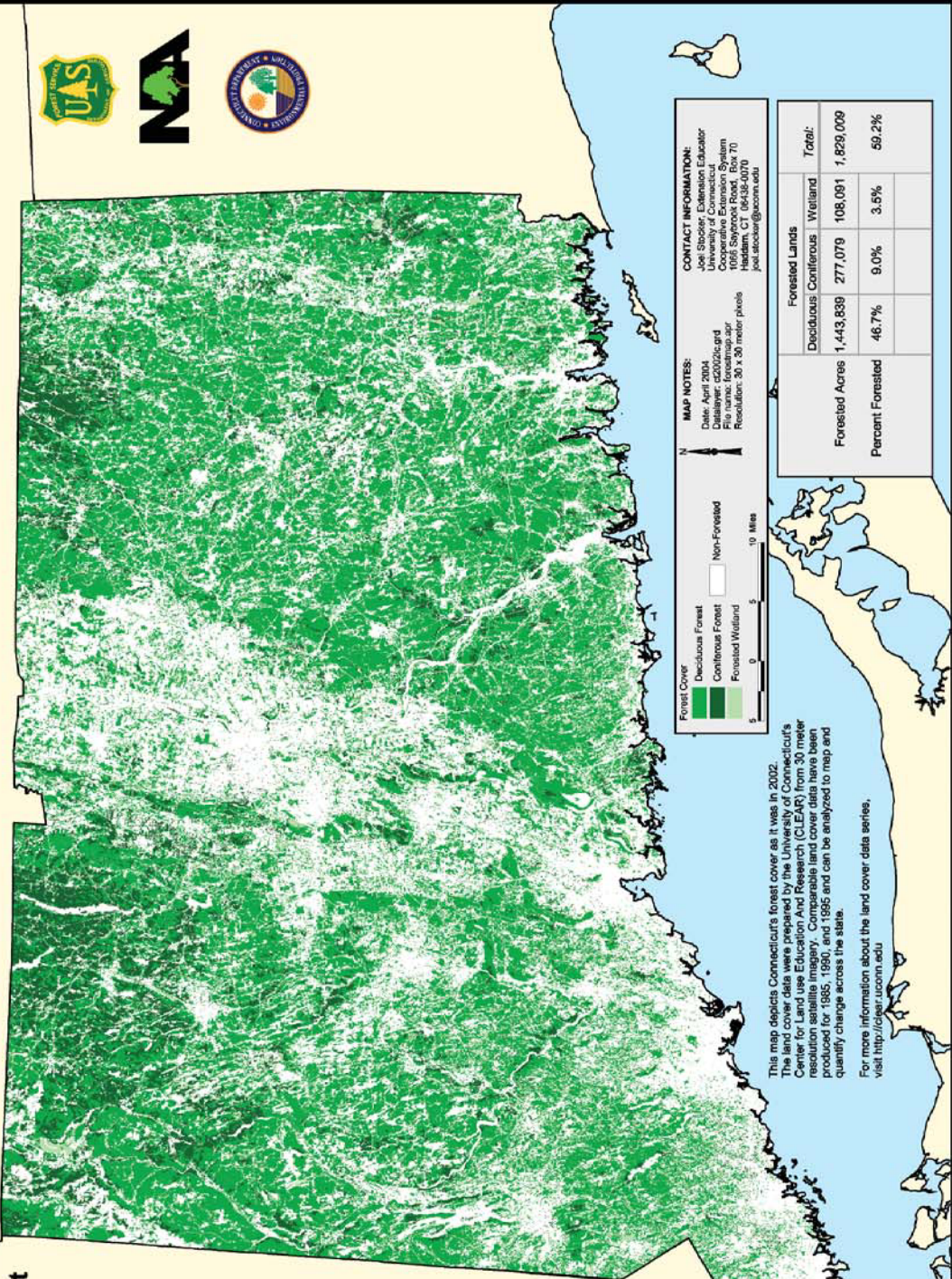


Satellite Derived Forest Cover - 2002

Connecticut



MAP NOTES:
 Date: April 2004
 Datafile: c2002c.gd
 Projection: UTM
 Resolution: 30 x 30 meter pixels

CONTACT INFORMATION:
 Joe Stoeber, Extension Educator
 Cooperative Extension System
 1055 Saybrook Road, Box 70
 Haddam, CT 06438-0070
 joe.stoeber@uconn.edu

This map depicts Connecticut's forest cover as it was in 2002. The land cover data were prepared by the University of Connecticut's Center for Land Use Education and Research (CLEAR) from 30 meter resolution satellite data produced for 1985, 1990, and 1995 and can be analyzed to map and quantify change across the state. For more information about the land cover data series, visit <http://clear.uconn.edu>

Forest Lands		Total:	
Deciduous	1,443,839	108,091	1,829,009
Coniferous	277,079	108,091	1,829,009
Forested Wetland			
Percent Forested		46.7%	59.2%

State of Connecticut
 Joe G. Blundell, Governor
 M. Todd Riv, Lt. Governor
 Department of Environmental Protection
 Arthur J. Rozga, Jr., Commissioner
 University of Connecticut
 Philip E. Austin, President
 College of Agriculture and Natural Resources
 Kristyn M. Kerr, Dean & Director

UNIVERSITY OF CONNECTICUT
 COOPERATIVE EXTENSION SYSTEM
 College of Agriculture and Natural Resources
 The University of Connecticut supports all state and federal laws that promote equal opportunity and prohibit discrimination.

