

# New Hartford Rodgers Bedrock Compilation Sheet (paper)

Map

## NOTICE !

Bedrock quadrangle 1:24,000 scale compilation sheets for the Bedrock Geological Map of Connecticut, John Rodgers, 1985, Connecticut Geological and Natural History Survey, Department of Environmental Protection, Hartford, Connecticut, in Cooperation with the U.S. Geological Survey, 1:125,000 scale, 2 sheets. [minimum 116 paper quad compilations with mylar overlays constituting the master file set for geologic lines and units compiled to the State map, some quads have multiple sheets depicting iterations of mapping]. Compilations drafted by Nancy Davis, Craig Dietsch, and Nat Gibbons under the direction of John Rodgers.

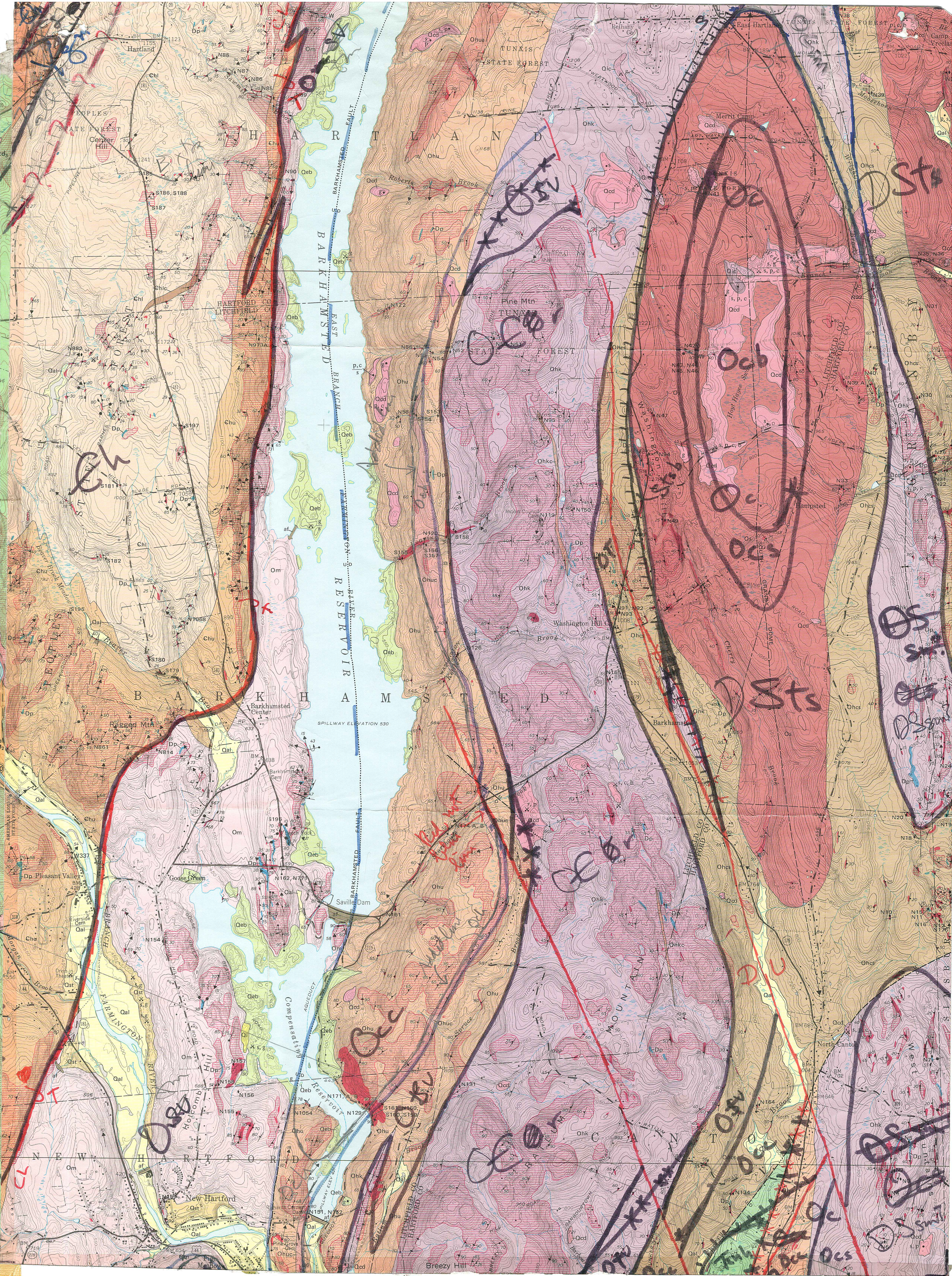
Geologic unit designation table translates earlier map unit nomenclature to the units ultimately used in the State publication.

This map set contains unpublished maps, cross-sections, and related information archived by the State Geological and Natural History Survey of Connecticut as part of the Survey Library Collection.

These materials have not been reviewed for accuracy, consistency, or completeness. For many geographic areas, more current information exists, either in published or unpublished form. These materials were developed under research and mapping agreements between the State Geological Survey and individual scientists, academic institutions, or graduate students. The veracity of the information contained within these documents is the responsibility of the authorship. The State Geological and Natural History Survey of Connecticut, does not promote or endorse this content, nor does the State Survey attest as to its level of accuracy.

These materials have been preserved under a cooperative agreement between the State Geological Survey and the US Geological Survey as part of the National Geological and Geophysical Data Preservation Program. [www.datapreservation.usgs.gov](http://www.datapreservation.usgs.gov)

These materials are offered in the spirit of open government. Reproduction of these manuscripts was conducted to the highest practical degree, within the parameters of the funding mechanism. Original documents are available for inspection by contacting the Connecticut State Geologist.



155 Hartland  
123  
1241  
1185  
1186  
1187  
1188  
1189  
1190  
1191  
1192  
1193  
1194  
1195  
1196  
1197  
1198  
1199  
1200  
1201  
1202  
1203  
1204  
1205  
1206  
1207  
1208  
1209  
1210  
1211  
1212  
1213  
1214  
1215  
1216  
1217  
1218  
1219  
1220  
1221  
1222  
1223  
1224  
1225  
1226  
1227  
1228  
1229  
1230  
1231  
1232  
1233  
1234  
1235  
1236  
1237  
1238  
1239  
1240  
1241  
1242  
1243  
1244  
1245  
1246  
1247  
1248  
1249  
1250  
1251  
1252  
1253  
1254  
1255  
1256  
1257  
1258  
1259  
1260  
1261  
1262  
1263  
1264  
1265  
1266  
1267  
1268  
1269  
1270  
1271  
1272  
1273  
1274  
1275  
1276  
1277  
1278  
1279  
1280  
1281  
1282  
1283  
1284  
1285  
1286  
1287  
1288  
1289  
1290  
1291  
1292  
1293  
1294  
1295  
1296  
1297  
1298  
1299  
1300

CH  
S181  
S182  
S183  
S184  
S185  
S186  
S187  
S188  
S189  
S190  
S191  
S192  
S193  
S194  
S195  
S196  
S197  
S198  
S199  
S200  
S201  
S202  
S203  
S204  
S205  
S206  
S207  
S208  
S209  
S210  
S211  
S212  
S213  
S214  
S215  
S216  
S217  
S218  
S219  
S220  
S221  
S222  
S223  
S224  
S225  
S226  
S227  
S228  
S229  
S230  
S231  
S232  
S233  
S234  
S235  
S236  
S237  
S238  
S239  
S240  
S241  
S242  
S243  
S244  
S245  
S246  
S247  
S248  
S249  
S250  
S251  
S252  
S253  
S254  
S255  
S256  
S257  
S258  
S259  
S260  
S261  
S262  
S263  
S264  
S265  
S266  
S267  
S268  
S269  
S270  
S271  
S272  
S273  
S274  
S275  
S276  
S277  
S278  
S279  
S280  
S281  
S282  
S283  
S284  
S285  
S286  
S287  
S288  
S289  
S290  
S291  
S292  
S293  
S294  
S295  
S296  
S297  
S298  
S299  
S300

NEW HARTFORD  
151  
152  
153  
154  
155  
156  
157  
158  
159  
160  
161  
162  
163  
164  
165  
166  
167  
168  
169  
170  
171  
172  
173  
174  
175  
176  
177  
178  
179  
180  
181  
182  
183  
184  
185  
186  
187  
188  
189  
190  
191  
192  
193  
194  
195  
196  
197  
198  
199  
200  
201  
202  
203  
204  
205  
206  
207  
208  
209  
210  
211  
212  
213  
214  
215  
216  
217  
218  
219  
220  
221  
222  
223  
224  
225  
226  
227  
228  
229  
230  
231  
232  
233  
234  
235  
236  
237  
238  
239  
240  
241  
242  
243  
244  
245  
246  
247  
248  
249  
250  
251  
252  
253  
254  
255  
256  
257  
258  
259  
260  
261  
262  
263  
264  
265  
266  
267  
268  
269  
270  
271  
272  
273  
274  
275  
276  
277  
278  
279  
280  
281  
282  
283  
284  
285  
286  
287  
288  
289  
290  
291  
292  
293  
294  
295  
296  
297  
298  
299  
300

Ocb

Ocb

Ocb

Ocb

Ocb

Sts

Sts

Sts

Sts

DU

DU

Ocb

Ocb

Ocb

Ocb

Ocb