

# Dover Plains Rodgers Bedrock Compilation Sheet (paper)

Map

## NOTICE !

Bedrock quadrangle 1:24,000 scale compilation sheets for the Bedrock Geological Map of Connecticut, John Rodgers, 1985, Connecticut Geological and Natural History Survey, Department of Environmental Protection, Hartford, Connecticut, in Cooperation with the U.S. Geological Survey, 1:125,000 scale, 2 sheets. [minimum 116 paper quad compilations with mylar overlays constituting the master file set for geologic lines and units compiled to the State map, some quads have multiple sheets depicting iterations of mapping]. Compilations drafted by Nancy Davis, Craig Dietsch, and Nat Gibbons under the direction of John Rodgers.

Geologic unit designation table translates earlier map unit nomenclature to the units ultimately used in the State publication.

This map set contains unpublished maps, cross-sections, and related information archived by the State Geological and Natural History Survey of Connecticut as part of the Survey Library Collection.

These materials have not been reviewed for accuracy, consistency, or completeness. For many geographic areas, more current information exists, either in published or unpublished form. These materials were developed under research and mapping agreements between the State Geological Survey and individual scientists, academic institutions, or graduate students. The veracity of the information contained within these documents is the responsibility of the authorship. The State Geological and Natural History Survey of Connecticut, does not promote or endorse this content, nor does the State Survey attest as to its level of accuracy.

These materials have been preserved under a cooperative agreement between the State Geological Survey and the US Geological Survey as part of the National Geological and Geophysical Data Preservation Program. [www.datapreservation.usgs.gov](http://www.datapreservation.usgs.gov)

These materials are offered in the spirit of open government. Reproduction of these manuscripts was conducted to the highest practical degree, within the parameters of the funding mechanism. Original documents are available for inspection by contacting the Connecticut State Geologist.

JA

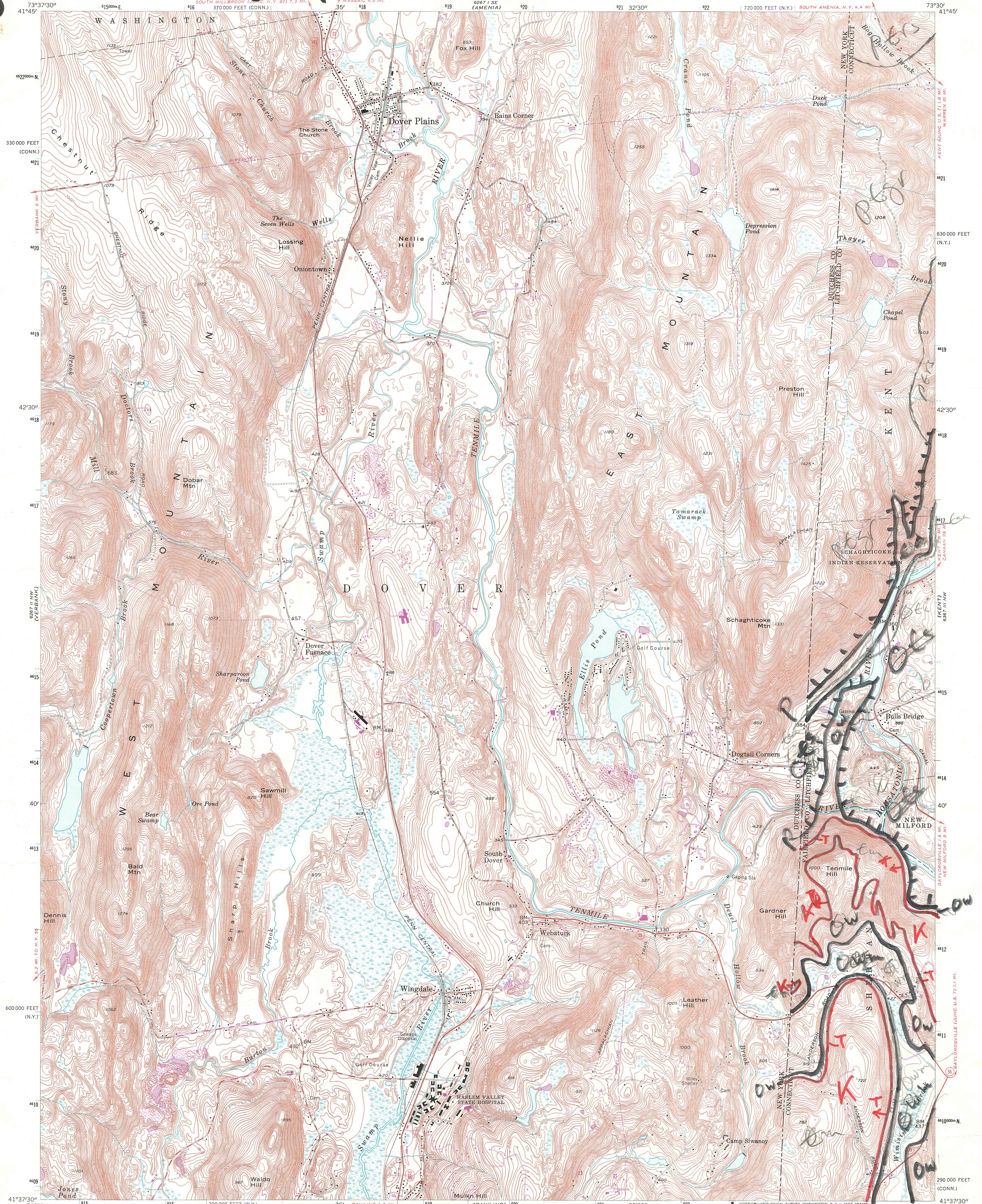
UNITED STATES DEPARTMENT OF THE INTERIOR GEOLOGICAL SURVEY

STATE OF CONNECTICUT HIGHWAY DEPARTMENT

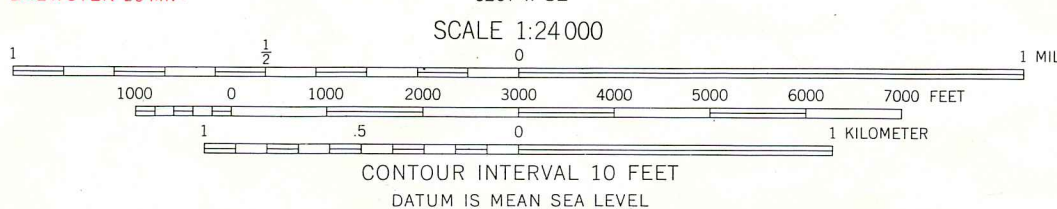
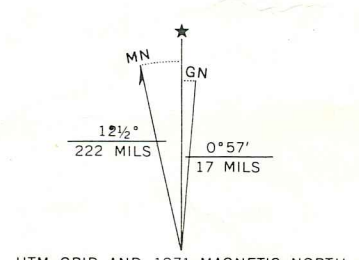
79 SW 1975

DOVER PLAINS QUADRANGLE NEW YORK-CONNECTICUT 7.5 MINUTE SERIES (TOPOGRAPHIC)

68714 SW (ELLSWORTH)



Mapped, edited, and published by the Geological Survey Control by USGS and USC&GS Culture and drainage in part compiled from aerial photographs taken 1941. Topography by planimeter surveys 1944 Revised 1958 Polyconic projection, 1927 North American datum 10,000-foot grids based on New York coordinate system, east zone, and Connecticut coordinate system 1000-meter Universal Transverse Mercator grid ticks, zone 18, shown in blue Revisions shown in purple compiled in cooperation with Connecticut Highway Department from aerial photographs taken 1971. This information not field checked



ROAD CLASSIFICATION table with symbols for heavy-duty, medium-duty, light-duty, and unimproved dirt roads, as well as U.S. and State routes.

THIS MAP COMPLIES WITH NATIONAL MAP ACCURACY STANDARDS FOR SALE BY U. S. GEOLOGICAL SURVEY, WASHINGTON, D. C. 20242 A FOLDER DESCRIBING TOPOGRAPHIC MAPS AND SYMBOLS IS AVAILABLE ON REQUEST

DOVER PLAINS, N. Y.-CONN. N4137.5-W7330/7.5 1958 PHOTOREVISED 1971 AMS 6267 II NE-SERIES V821

45