

Haddam Rodgers Bedrock Compilation Sheet (paper)

Map

NOTICE !

Bedrock quadrangle 1:24,000 scale compilation sheets for the Bedrock Geological Map of Connecticut, John Rodgers, 1985, Connecticut Geological and Natural History Survey, Department of Environmental Protection, Hartford, Connecticut, in Cooperation with the U.S. Geological Survey, 1:125,000 scale, 2 sheets. [minimum 116 paper quad compilations with mylar overlays constituting the master file set for geologic lines and units compiled to the State map, some quads have multiple sheets depicting iterations of mapping]. Compilations drafted by Nancy Davis, Craig Dietsch, and Nat Gibbons under the direction of John Rodgers.

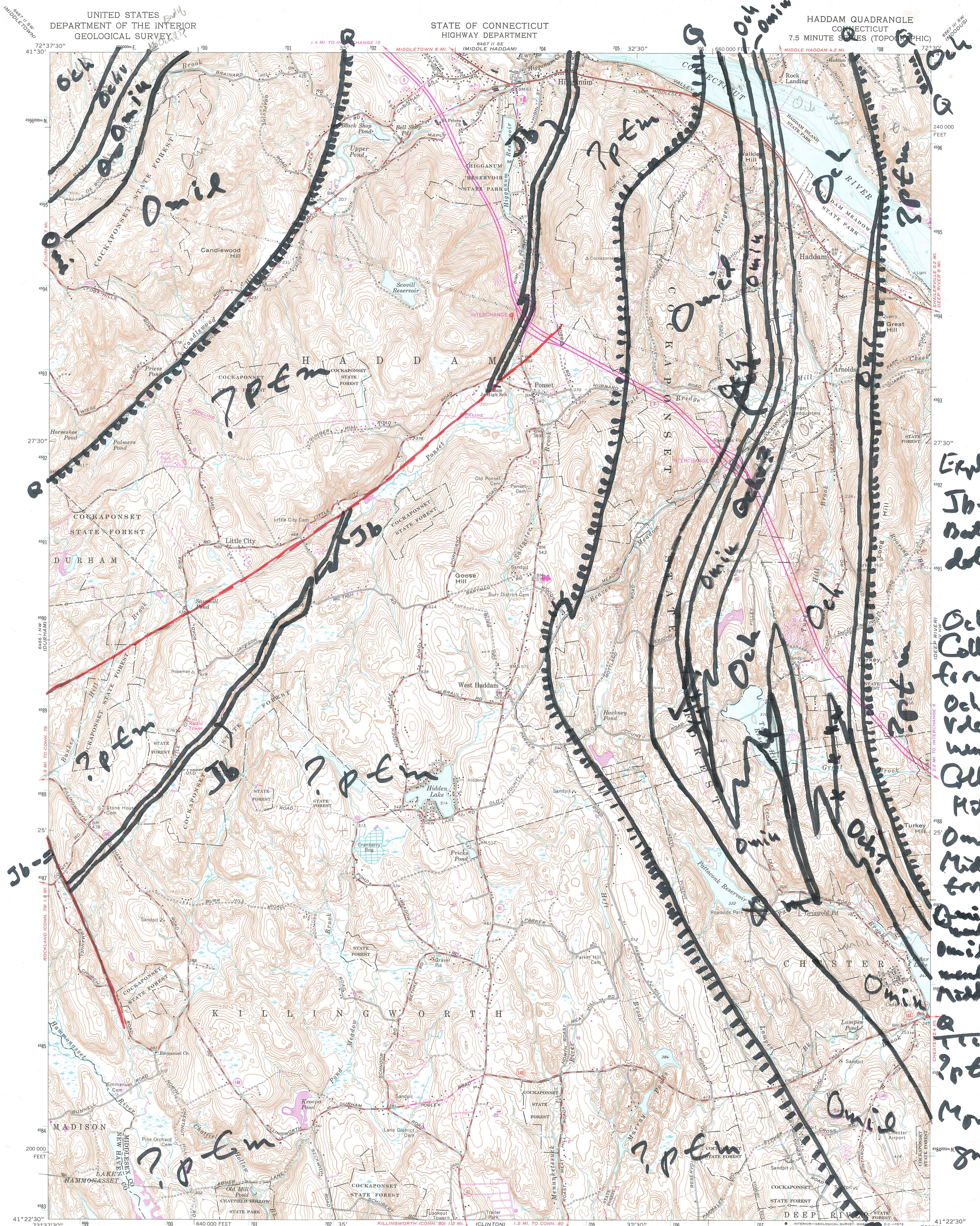
Geologic unit designation table translates earlier map unit nomenclature to the units ultimately used in the State publication.

This map set contains unpublished maps, cross-sections, and related information archived by the State Geological and Natural History Survey of Connecticut as part of the Survey Library Collection.

These materials have not been reviewed for accuracy, consistency, or completeness. For many geographic areas, more current information exists, either in published or unpublished form. These materials were developed under research and mapping agreements between the State Geological Survey and individual scientists, academic institutions, or graduate students. The veracity of the information contained within these documents is the responsibility of the authorship. The State Geological and Natural History Survey of Connecticut, does not promote or endorse this content, nor does the State Survey attest as to its level of accuracy.

These materials have been preserved under a cooperative agreement between the State Geological Survey and the US Geological Survey as part of the National Geological and Geophysical Data Preservation Program. www.datapreservation.usgs.gov

These materials are offered in the spirit of open government. Reproduction of these manuscripts was conducted to the highest practical degree, within the parameters of the funding mechanism. Original documents are available for inspection by contacting the Connecticut State Geologist.



Explanation

Jb -
Baltic
dolomite

Och -
Collinwood
formation

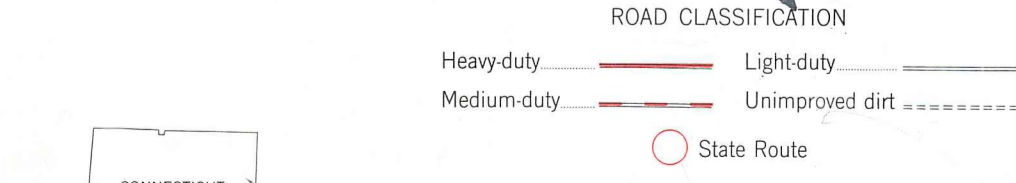
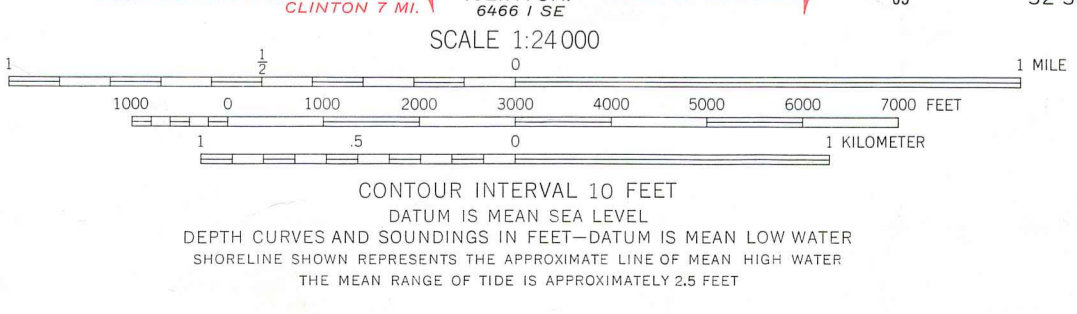
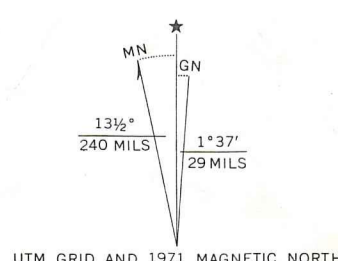
Ochv -
Vernon
member of
Collinwood
Hill fm.

Om -
Middletown
formation

Omia - type
member of
Omia - lower
member of
Middletown
fm.

Q -
Recent
? pEm -
Mound
guess

Mapped, edited, and published by the Geological Survey
Control by USGS, USC&GS, USCE, and Connecticut Geodetic Survey
Topography by photogrammetric methods from aerial
photographs taken 1950. Field checked 1952. Revised 1961
Selected hydrographic data compiled from USC&GS Chart 266 (1962)
This information is not intended for navigational purposes
Polyconic projection. 1927 North American datum
10,000-foot grid based on Connecticut coordinate system
1000-meter Universal Transverse Mercator grid ticks,
zone 18, shown in blue
Fine red dashed lines indicate selected fence and field lines where
generally visible on aerial photographs. This information is unchecked
Revisions shown in purple compiled in cooperation with
Connecticut Highway Department from aerial photographs
taken 1971. This information not field checked



HADDAM, CONN.
N4122.5-W7230/7.5
1961
PHOTOREVISED 1971
AMS 6466 1 NE-SERIES V816

83