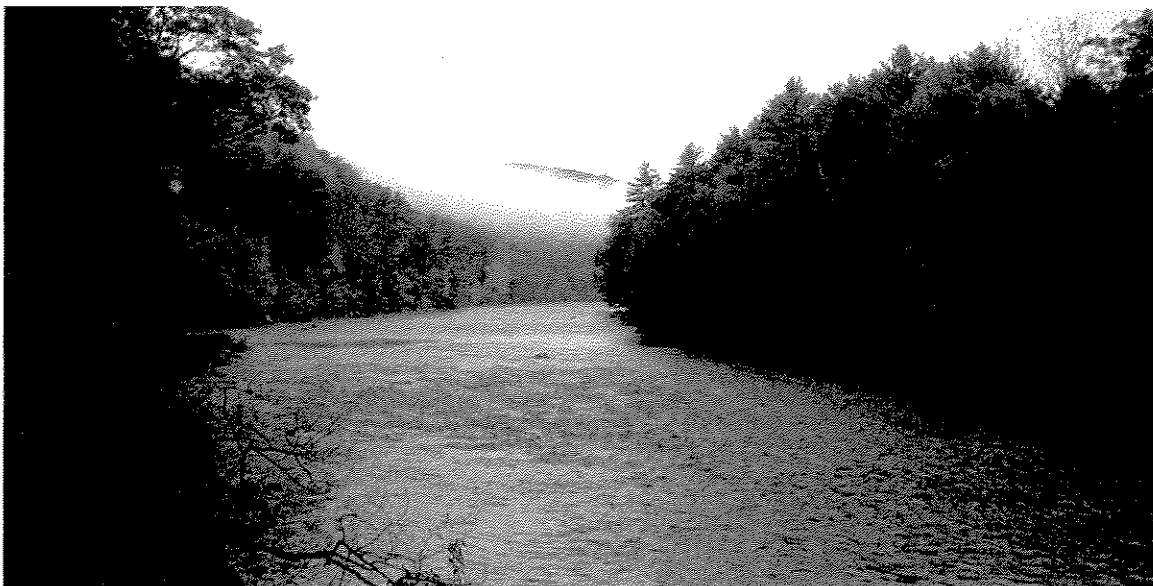


CTDEP-Inland Fisheries Division
Housatonic River Natural Resources Restoration Project

RECEIVED
JUN 20 2007
INLAND FISHERIES

Sega Meadows Park River Restoration Project



Submitted by:

Town of New Milford

10 Main Street

New Milford, Connecticut

June 20, 2007

00031

Housatonic River Basin Natural Resources Restoration Project
 Natural Resources Trustee SubCouncil for Connecticut
 Request for Supplemental Information (RSI)
INSTRUCTIONS

PART A: SPONSOR AND PROJECT SUMMARY FORM

Please read "Request for Supplemental Information (RFI) OVERVIEW" and this document,
 "Request for Supplemental Information (RSI) INSTRUCTIONS" before completing this form.

Part A must be completed using this "Sponsor and Project Summary Form"

SPONSOR INFORMATION

Type of Entity Check the box that best describes the sponsor.

- | | |
|--|--|
| <input type="checkbox"/> Private individual | <input checked="" type="checkbox"/> Municipal government |
| <input type="checkbox"/> Non-profit organization | <input type="checkbox"/> Corporation or Business |
| <input type="checkbox"/> State government | <input type="checkbox"/> County government |
| <input type="checkbox"/> Federal government | <input type="checkbox"/> Academic Institution |
| <input type="checkbox"/> Tribal government | <input type="checkbox"/> Other (explain) |

Authorized Representative of Sponsor

Town of New Milford

Name

Patricia Murphy

Title

Mayor

Address

10 Main Street

City	State	Zip
New Milford	CT	06776

Phone

860-355-6010

Email

mayor@newmilford.org

Contact Person (if different from Authorized Representative):

Name

Daniel Calhoun

Title

Director

Address

47 Bridge Street

City	State	Zip
New Milford	CT	06776

Phone

860-355-6050

Email

dcalhoun@newmilford.org

Project Name Provide a brief working name:

Sega Meadows Park River Enhancement Project

Project Location

Attach an 8.5 x 11-inch map or copy of an aerial photograph showing project location and extent. Include pertinent topographic and geographic information, a scale, and north arrow.

State(s), Municipality/ies: Connecticut, New Milford

Longitude for approximate center of project area: W 73deg 27 min

Latitude for approximate center of project area: N 41deg 36 min

NOTE: If a specific location(s) has/have not been selected yet, include in Part C a narrative describing how project location(s) will be selected.

Restoration Priority Category See Appendix C of these Instructions for Restoration Priority Category Descriptions

Primary Category. Check the restoration category that is the primary goal of the project. Check one box.

- Aquatic Natural Resources Restoration/Enhancement
- Riparian & Floodplain Natural Resources Restoration/Enhancement
- Restoration/Enhancement of Recreational Uses of Natural Resources

Secondary Categories. Check all relevant boxes.

- Aquatic Natural Resources Restoration/Enhancement
- Riparian & Floodplain Natural Resources Restoration/Enhancement
- Restoration/Enhancement of Recreational Uses of Natural Resources

List Specific Injured Natural Resources and/or Impaired Natural Resource Services to Benefit from Project

The Sega Meadows Park River Enhancement Project will restore and rehabilitate natural resources at the park and along the Housatonic River, including flora and the native wildlife such as bobcats, wild turkeys, foxes, coyotes, beavers, deer and wide variety of fish and numerous types of birds and water fowl.

Project Budget Summary

Complete the table below to summarize the budget information that is detailed in Part D: Project Budget Narrative and Forms. Sponsors are advised to complete Part D (Project Budget Narrative and Forms) before filling in the table below.

Housatonic River NRD Funds – Requested	Other Contributions (Committed)	Other Contributions (Not Committed)	Total Project Cost (boxes 1+2+3)
1. From Part D, Table 2, Box 5 \$75,217.	2. From Part D, Table 2, Box 6 \$15,583.	3. From Part D, Table 2, Box 7 \$5,900.	4. From Part D, Table 2, Box 8 \$96,700.
Amount of Other Contributions to Be Considered as Cost-Matching to NRD Fund Request			
5. \$21,483.			

Authorizing Statement

I hereby declare that the information included in this project submission and all attachments is true, complete, and accurate to the best of my knowledge, and that the proposed project complies with all applicable state, local, and federal laws and regulations.

Signature of Sponsor or Sponsor Representative

Date

Name of Sponsor or Sponsor Representative
(Type or print clearly)

6/20/07



SEGA MEADOWS TRAIL MAP
 APRIL 11, 2007
 BY: DLS
 NOT TO SCALE

PART B-Project Abstract

Sega Meadows Park River Enhancement

Sega Meadows, a 23-acre public park nestled between the beautiful Housatonic River and scenic River Road in northern New Milford has been undeveloped and underutilized since its purchase in 1992. The Town was unable to fully use this undeveloped park area due to public fear of PCB contamination, limited pedestrian access and no parking for vehicles.

In 2005, through the generosity of Northeast Utilities, an additional 65.12 acres on the Housatonic River was licensed to the Town to be used expressly for access improvements and development of the park.

Over the next two years, the improvements to Sega Meadows will provide the public with unique educational opportunities and direct public access to the property through the creation of a parking area and the installation of informational kiosks and educational signage.

Nature trails will be developed throughout the park and alongside the Housatonic River, with a picnic area, primitive camping and designated areas for fishing and non-motorized boating. Native fauna and flora will be identified using educational signage.

Partnering with community volunteers and with the support from the Iroquois LEAF project, the Sega Meadows Park River Enhancement Project will install parking, amenities such as picnic tables, grills, benches and signage, develop and construct a trail system, fishing area, and construct a primitive camping area on the Housatonic River.

Through careful planning, the recreational areas of this property will encourage the public to preserve the environmental conditions along the shoreline of the Housatonic River.

PART C-Project Narrative

1.0 General Description

Project Goals and Objectives

The Town of New Milford is requesting consideration for funding from the Housatonic River Natural Resources Restoration Project for the development of Sega Meadows Park. Sega Meadows Park, a 23-acre public park nestled between the beautiful Housatonic River and scenic River Road, was purchased by the Town of New Milford in 1992 and has yet to be developed.

Prior to 2005, the Town was unable to fully use this undeveloped park area due to both public fear of PCB contamination, limited pedestrian access and no parking for vehicles. However, in 2005, through the generosity of Northeast Utilities, an additional 65.12 acres on the Housatonic River was licensed to the Town to be used expressly for access improvements and development of this the park.

The goal of the Town of New Milford is to develop Sega Meadows Park while preserving the Housatonic riverbank in its natural state. The park will be used for passive recreational use, educational opportunities for local scouting, civic and community groups, and to provide continued support for a variety of native fauna and native flora that abounds in this pristine area.

To meet this goal, the Town of New Milford will construct a gravel entranceway road, separate emergency and maintenance road, and create a 12-

car parking area that will allow patrons to gain access into the park area. Care will be given to construct the road and parking area using natural materials. An informational kiosk will be installed detailing park trails, descriptions of the wildlife found at the park including beaver, fox and coyote, and the native plant and tree species found in the area. A sign-in book will be placed at the kiosk along with brochures of park trails, camping locations and fishing locations. New picnic tables, park benches in scenic areas that overlook the Housatonic River, trash receptacles and a portable toilet will be available for patron comfort.

Visitors will be able to access the park area on foot via a marked trail system that will both encircle and traverse the varied park areas. Primitive campsites will be developed for use by patrons, scouting groups, and civic and community groups, and a natural fishing area will be designated along the banks of the Housatonic River. In order to encourage new habitats for woodland and meadow birds, nesting boxes will be installed in various locations. It is anticipated that Sega Meadows Park will become a popular destination for a wide variety of passive recreational opportunities.

In order to properly monitor persons using Sega Meadows Park, selective registration tools will be employed. A sign-in book will be placed at the informational kiosk and patrons will be urged to write comments and the expected day's use. Additionally, campers will need to formally apply to use the park overnight, requiring them to fill out a "Facility Use Application". In

these two ways, park users can be not only counted, but also tracked for type of usage (hiking, fishing, overnight camping, picnicking, etc.)

To assess growth of woodland and meadow birds, the nesting boxes will be checked and counted once during the spring season and once during the fall season for bird usage. It is hoped the provision of nesting locations will encourage birds to flock to Sega Meadows Park.

Project Scope and Project Implementation Plan

a. The scope of the Sega Meadows Park River Enhancement Project will include two specific components, both that are part of the lease agreement approved between Northeast Utilities and the Town of New Milford. Phase One (Year One) will allow for public entry into the undeveloped property including the design and construction of an entranceway road, the design and construction of a parking area, and the installation of site amenities (picnic tables, park benches, a cooking grill, trash receptacles, informational and educational signage and kiosk, and a portable toilet).

Phase Two (Year Two) will include the design and construction of an access road through the park for maintenance and emergency vehicles only. Phase Two will also include the design and building of pedestrian hiking trails (with appropriate signage), the selection of a fishing area along the banks of the Housatonic River with educational signage, the design and clearing of a primitive camping area and the building and installation of nesting boxes for birds (bluebird, chickadee, wrens and owls).

b. The project will take place over a two-year period. Year One (2008) will be the opening of the entrance into Sega Meadows Park and the parking area, plus patron amenities. Year Two (2009) will be the construction of the access road, the construction of trails, the construction of primitive camping sites and fishing area and the installation of the nesting boxes. Completion of the entire project will be October 2009.

c. Major project phases and milestone tasks are as follows:

Year One:

- Brush and Tree Removal-Entranceway and Parking Area
- Excavate and Grade Entranceway
- Excavate and Grade Parking Area
- Install Gravel on Entranceway and Parking Area
- Install 16' Swing Gate
- Install Park Signage and Informational Kiosk at Entranceway
- Install Portable Restroom, Picnic Tables and Garbage
Receptacles

Year Two:

- Design of trails, camping area and fishing area
- Brush and Tree removal-emergency and maintenance access
road, trails, camping sites and fishing area
- Excavate and grade access road
- Install gravel on emergency and maintenance access road
- Construction of trails

- Construction of camping sites and fishing area
- Removal of invasive plants and replanting with native species
- Install educational signage along trails and at fishing area

d. The property access agreement was approved in November 2005 between Northeast Utilities and the Town of New Milford (Attachment B).

e. The project will not require any Federal or State Regulatory approvals, however, will require approval from the Town of New Milford Inland Wetlands Commission.

2.0 EVALUATION CRITERIA

Location of Project-The project is located immediately alongside the Main Stem of the Housatonic River in northern New Milford, Connecticut, upstream from the Derby Dam. Sega Meadows Park is bounded by the Housatonic River on the west and scenic River Road on the east.

Natural Recovery Period-The cleaning and clearing of Sega Meadows Park will allow for recreational opportunities that did not exist prior to gaining access into the park. Clearing of the debris along the riverbank includes removal of some existing invasive plant species and the replanting of the area with native flora, thus encouraging the return of natural fauna.

Sustainable Benefits-New Milford Parks and Recreation Department is committed to sound environmental practices. At Sega Meadows Park, the associated benefits of sustainable design and construction will enhance this park for years to come. The

intent of this program is to encourage practices that will not only reduce maintenance costs through the use of natural construction materials and park amenities, but also to have minimal impact to the park environment, increased ecological function to the natural areas and increased comfort and safety to Sega Meadows Park visitors.

Construction materials will be natural materials—rocks for parking barriers, wood chips and leaf litter for trails and pathways and logs for hillside stability (if needed). Park amenities such as picnic tables, benches and park signage will be of natural materials and color to blend into the surrounding areas. Nesting boxes will be placed in strategic areas to attract the birds and provide viewing pleasure for local birdwatchers. Overnight visitors and scouting groups can enjoy cleared and wood-chipped camp sites with rock-ringed fire pits.

Magnitude of Ecological Benefits-Erosion control will be accomplished throughout Sega Meadows Park by stabilizing the banks of the river and small streams. The use of nesting boxes for birds will provide wildlife habitation, and the invasive plant species will be removed along the riverbank.

Magnitude of Recreational Benefits-By facilitating public access into Sega Meadows Park, increased recreational activities will now be possible. Hiking, fishing, camping and bird watching will be available to residents and tourists, civic groups, and local scouts. These activities have many personal, social, environmental and economic benefits, such as physical fitness and relaxation, learning and education, community awareness, the access to a beautiful and affordable outdoor location and increased civic pride.

Technical Merit

Technical/Technological Feasibility-The Town of New Milford will complete the major tasks of clearing the property for the entranceway road, parking area and emergency and maintenance access road using town resources and town employees. Tree removal will be done by an outside contractor/tree removal service.

New Milford's Department of Public Works and Parks and Recreation have completed numerous collaborative projects in similar environments at park locations and playing fields. The Sega Meadows Park River Enhancement Project manager will be the Director of New Milford Parks and Recreation, working in conjunction with the Director of New Milford Public Works. The technical aspect of each phase of the project will be the responsibility of the Director of New Milford Parks and Recreation who will ensure that each portion meets the standards of best practices.

This approach has been used successfully on other New Milford town and park projects. The only uncertainty regarding the project would be weather related. Completion timeline may be modified, depending on local weather conditions.

Adverse Environmental Impact-There are no adverse environmental impacts by implementing the project. The Inland Wetlands Commission will stipulate how work is done to minimize any negative impacts. Both the emergency and maintenance access road and trails are inaccessible to the vehicles belonging to the general public, eliminating environmental impact to the Housatonic River ecosystem. Sega Meadows Park will be posted and patrolled by the local police department to prevent access by

motorized vehicles (ATV's), and erosion caused by existing bootleg trails will be eliminated because proper river access will now be possible. With the removal of invasive plant species along the riverbank and the replanting of native species, natural wildlife will now be able to flourish once again.

Human Health and Safety- The park will only have passive recreation use such as hiking, fishing, camping, and bird watching, thus potential adverse effects on human health and safety are minimal. There is no high-risk construction, nor potential mobilization of pollutants associated with construction activities, and high risk recreation activities are not a permitted use of the Sega Meadows Park property.

Measurable Results-Since Sega Meadows Park will now be available for public access, monitoring patron usage can provide New Milford Parks and Recreation with valuable information for future programming needs. Monitoring and evaluation tools will provide detailed information on types of patron usage, patron numbers and community awareness and involvement.

- A sign in book will be placed at the entrance to Sega Meadows Park in the informational kiosk. A second method of monitoring/evaluation will be the requirement of a park permit for group access (scouting, community groups) and overnight camping. A third method of monitoring/evaluation will be the counting the number of nesting boxes that contain nests and or eggs.
- Patrons will be asked to indicate date of entrance to the park, type of activity being done in the park (i.e. fishing, hiking, bird

watching, etc.), number of people in their party, information on how the patron(s) heard about the park (press release, newspaper, Parks & Recreation brochure, word-of-mouth, etc.) and additional comments. Data will be collected once a month by New Milford Parks and Recreation employees in order to monitor usage numbers and any areas of concern.

- Park permits (Facility Use Application) will be required for any group intending to use the park on a formal basis such as scouts or community groups who intending to camp overnight, conduct any type of work projects on site or use Sega Meadows Park for fishing events. The park permit will be approved and issued by the New Milford Parks and Recreation Department. Park permits will be monitored for types of usage (i.e. camping, fishing or work projects), groups using the park (scouting groups, large family groups or community groups), and date/times using Sega Meadows Park.
- Nesting boxes will be monitored by New Milford Parks and Recreation employees once during the spring season and once during the fall season for usage by birds. Employees will record the location of the nesting box and whether a nest and/or eggs were found. This information will be given to New Milford Parks and Recreation offices for compilation.

- If monitoring and evaluation tools are not being used by patrons, location of the sign in book will be changed. If patron usage shows that less than 20 people per month are using Sega Meadows Park, the New Milford Parks and Recreation Department will increase public awareness of Sega Meadow Park through the use of press releases.
- If at the time of monitoring, the nesting boxes are found to be empty, the location will be given to a local bird watching group for evaluation and possible reason.
- At this time, the monitoring/evaluation effort does not consider or coordinate with other monitoring being conducted in the Housatonic River watershed.

PART D-Budget Narrative

Relationship of Expected Costs to Expected Benefits

The economic costs of the Sega Meadows River Enhancement Project are far outweighed by the economic benefits.

- Benefits on local property values: Parks have been shown to have a positive impact on local property values.
- Benefits to local recreational and related businesses: Due to the opening of Sega Meadows Park, local business will increase at sporting goods store and food venues.
- Benefits of short-term economic impact to employees: Due to the Sega Meadows Park River Enhancement Project, various town agencies will employ seasonal workers to help with the project, thereby providing jobs to the area.

The social costs/benefits of the Sega Meadows River Enhancement Project are as follows:

- Aesthetically, the project will influence residents' and visitors' enjoyment of the Housatonic River and surrounding meadows, separate from its recreational use, by offering quiet spots for viewing the native flora and fauna
- An increased sense of community and well-being by allowing residents and visitors to connect with nature
- Increased collaborative partnerships between local civic and municipal groups as they work together to bring the project to fruition

-Tremendous educational benefits as science educators and scouting groups use Sega Meadows Park for educational pursuits.

-Recreationally, access into the park area will allow walkers, hikers, anglers, birdwatchers, plant lovers and student groups to explore Sega Meadows Park.

Environmental benefits include:

-The elimination of erosion caused by unauthorized ATV's on the trails leading to the Housatonic River ecosystem.

-A better appreciation of the Housatonic River by the citizens of New Milford will lead to increased river stewardship.

Leveraging of Additional Resources

Matching funds in the amount of \$10,000.00 have been awarded to the New Milford Parks and Recreation Department as a LEAF Grant (Land Enhancement Acquisition Fund) by the Iroquois Gas Transmission System (Attachment A).

Volunteer assistance on the project will be provided by Boy and Girl Scout groups who will clear the entranceway road and parking area of brush and debris, and clear the camping sites and fishing area.

In addition, Eagle Scout candidates will clear a picnic grove area at the entrance of Sega Meadows Park, constructing and installing the swing gate, an informational kiosk, and picnic tables. The estimated cost for supplies and materials is \$3,600.

Local bird watchers have offered assistance in the design, construction and installation of nesting boxes for bluebirds, wrens, owls and other meadow birds. The cost of supplies and materials is \$2,150.

Socioeconomic Merit

Community Involvement and Diversity

Various Community groups, town agencies and local scouting organizations have expressed strong interest in being involved with the Sega Meadows Park River Enhancement Project, beginning with the lease agreement between the Town of New Milford and Northeast Utilities for 65 acres of land immediately adjoining Sega Meadows Park. The Garden Club of New Milford has offered to plant decorative shrubs at the entrance of Sega Meadows Park. The New Milford Youth Agency (New Milford's youth service bureau) will be constructing a footbridge over one of the small streams and will assist in trail clearing work. The Ousatonic Fish and Game Association will be working closely with New Milford Parks and Recreation Department to stock the small pond that is found at Sega Meadows Park and Trout Unlimited will be contacted to restock the Housatonic River. A local scouting group will be hosting a children's fishing derby in the near future.

Adverse Socioeconomic Impacts-There are no adverse socioeconomic impacts associated with this project.

Coordination and Integration-The proposed Sega Meadows Park River Enhancement Project is complementary with the goals and recommendations of the New Milford Parks and Recreation Five-Year Plan to develop new parklands for town residents. In addition, the Ordinances of the Town of New Milford stipulates that the New Milford Parks and Recreation Commission "be charged with the preservation, control, development, improvement, management, operation and maintenance of a system of public parks, forests, recreations facilities and areas now in existence".

Public Outreach-At present, the Sega Meadows River Enhancement Project is receiving publicity in our local newspapers. Articles have been written about the request for funding from the Housatonic River Basin Natural Resources Restoration Project, and publicity will continue to extol the beauty of Sega Meadows Park. In addition, the New Milford Parks and Recreation Department will be publishing important information about Sega Meadows Park on the department's website, placed in local newspapers as press releases and highlighted in an upcoming informational brochure. It is the intent of New Milford Parks and Recreation to host a grand opening event, including tour of the property, when the restoration is completed and ready for residents' enjoyment.

Applicant Implementation Capacity

Technical Capacity of Applicant and Project Team

Project Manager: Daniel Calhoun, Director-New Milford Parks and Recreation

Engineering Consultant: Michael Zarba, Director-New Milford Public Works

Engineering Consultant: Thomas Sprong, Engineer-New Milford Public Works

Environmental Consultant: James Ferlow, Inland Wetlands Officer, Town of New Milford

Please see resumes of the principals on attached pages.

Administrative Capacity of Applicant and Project Team

In addition to the proven technical capabilities of Project Manager Daniel Calhoun, Engineering Consultant Michael Zarba and Environmental Consultant James Ferlow, the New Milford Parks and Recreation Department has many years of experience in project management at 12 municipal parks. Outside technical expertise is readily available from

town residents, the Connecticut Recreation and Parks Association and the National Parks and Recreation Association, if needed, to bring the Sega Meadows Park River Enhancement Project to fruition.

Project Commitments-Although the majority of work on project implementation will come from municipal departments in the Town of New Milford (Department of Public Works, Inland Wetlands Commission and New Milford Youth Agency), other commitments have been sought from the Ousatonic Fish and Game Club, the New Milford Garden Club, Trout Unlimited, local Boy Scout and Girl Scout groups.

TABLE 1. HOUSATONIC RIVER NRD FUNDING ALLOCATION BY FISCAL YEARS ¹

PROJECT TITLE:		Sega Meadows Park River Restoration Project			
SPONSOR NAME:		Town of New Milford			
EXPENSE CATEGORY (See App. A)	FISCAL YEAR 1	FISCAL YEAR 2	FISCAL YEAR 3	FISCAL YEAR 4	
	Housatonic River NRD Funds	Housatonic River NRD Funds	Housatonic River NRD Funds	Housatonic River NRD Funds	
A. SALARIES	\$14,565.	\$3,915.			
B. OVERHEAD AND BENEFITS	\$5,097.	\$1,370.			
C. CONTRACTED SERVICES	\$6,750.	\$4,250.			
D. SUPPLIES, MATERIALS AND EQUIPMENT	\$19,470.	\$19,800.			
E. TRAVEL					
F. OTHER (LIST)					
G. OTHER (LIST)					
TOTAL BY FISCAL YEAR	1	\$45,882.	2	\$29,335.	
			3	4	
GRAND TOTAL (sum of boxes 1+2+3+4)					
[This sum is the total NRD fund request and should match Part A, Budget Summary, Box 1]					
\$75,217.					

¹ The fiscal year is July 1 – June 30. If the proposed project will be completed in one year, fill in only the column titled “Fiscal Year 1.”

TABLE 2. PROJECT BUDGET SUMMARY BY TASK AND FUNDING SOURCE

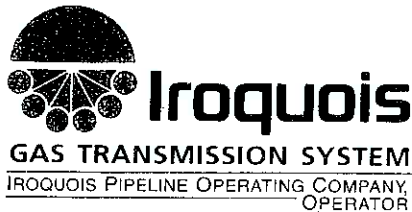
PROJECT TITLE:		Sega Meadows Park River Restoration Project					
SPONSOR NAME:		Town of New Milford					
TASK²	HOUSATONIC RIVER NRD FUNDS	OTHER CONTRIBUTIONS		TOTAL COST BY TASK			
		COMMITTED	NOT COMMITTED				
A. Tree and Brush Removal	\$11,000.						
B. Excavation & Grading of entrance, parking and access road	\$57,750.						
C. Swing Gate, Kiosk and Park Amenities		\$13,583.					
D. Trail Design & Construction	\$ 4,500.	\$ 2,000.					
E. Construction of fishing and camping areas				\$ 2,500.			
F. Removal of invasives and replanting of native species				\$ 1,250.			
G. Build and Install educational signage and nesting boxes	\$ 1,967.			\$ 2,150.			
TOTAL BY FUNDING SOURCE	5 \$75,217.	6 \$15,583.	7 \$5,900.	8	GRAND TOTAL	\$96,700.	

NOTES: Box 5 should be the same as the Grand Total indicated in Part D Table 1. Box 6 above should match Part A, Budget Summary, Box 2. Box 7 above should match Part A, Budget Summary, Box 3. Box 8 should match Part A, Budget Summary, Box 4

² The listed tasks should correspond with information provided in the Project Implementation Plan.

ATTACHMENT A

Iroquois LEAF grant



ONE CORPORATE DRIVE, SUITE 600
SHELTON, CT 06484-6211

TEL: (203) 925-7200
FAX: (203) 929-9501

January 26, 2007

Eleanor K. Covelli
Assistant Director
New Milford Parks & Recreation
47 Bridge Street
New Milford, CT 06776

Dear Ms. Covelli:

I am pleased to inform you that the Town of New Milford Parks & Recreation has been awarded a grant in the amount of \$10,000 through our Land Enhancement and Acquisition Fund (LEAF) for enhancements to the Town's Sega Park. Specifically, funding will be used to create a parking area with swing gates, park signage and an informational kiosk as outlined in your proposal dated September 12, 2006.

Any and all activities undertaken in developing this project must comply with all applicable environmental, cultural resource and planning regulations. All requests for reimbursement for this project must be made by December 31, 2008.

The \$10,000 will be released upon the following conditions being satisfied:

- Copies of the original invoices incurred for the project will be provided to Iroquois along with verification that the invoices have been paid. Upon receipt of this information, Iroquois will reimburse you for these expenditures.
- Confirmation that a plaque will be installed at the project site stating that funding for this project was provided by Iroquois or acknowledgment of Iroquois' contribution may be combined with other contributors to the project. This signage must receive the approval of Iroquois prior to being finalized.

Upon release of the funds, we will require that you provide us the following documentation:

1. Photographs of the site and any news articles relating to the project.
2. Directions to site.
3. Notice of any planned dedication ceremony.

Congratulations on your successful submission. Please do not hesitate to contact me at (203) 925-7209 if you have any questions concerning the conditions stated above.

Sincerely,

Ruth Parkins
Public Affairs Manager

ATTACHMENT B

Northeast Utilities License for use of CL&P property

NORTHEAST UTILITIES LICENSE TO THE TOWN OF NEW MILFORD FOR THE
USE OF CL&P PROPERTY ADJACENT TO NEW MILFORD'S SEGA PROPERTY.

Attachment II – Schedule of Property Uses and Improvements

Notes and Definitions:

Note: except where otherwise noted, all work and improvements described herein are to be performed and/or supplied, and subsequently maintained by the Licensee (Town of New Milford).

Definitions:

“Property” as used in this attachment shall have the same meaning as the term “Property” as defined in the License Agreement.

A. INITIAL IMPROVEMENTS AND PROPERTY ALTERATIONS

ENTRANCE WAY, PARKING LOT, and VEHICULAR ENTRANCE CONTROL

The entranceway is to follow the trace of an older roadway entering at the northernmost post barrier currently blocking entry into the property.

Removal of the foregoing post barrier and other barriers along the road is conditioned on the installation and subsequent maintenance of an equally effective system of sturdy barriers that will preclude ATV and motorbike entry into parts of the property beyond the immediacy of the entryway and parking lot.

Barriers may include rocks and wooden structures and should have a natural appearance. Gates should be made of pipe (not sheet metal), mounted on posts anchored in concrete foundations, and painted so that they match the surroundings. Any locking mechanism must enable CL&P to enter and secure the gate with its own padlock, separate from that of the Town (e.g., incorporate a chain with the two padlocks in series).

The Gate controlling vehicular entry into the rest of the property will be installed at the indicated location on Attachment I identified as “Proposed Gate.” Accompanying the Gate will be a sign and a “Kiosk,” in wood, for a park map and other instructions and rules regarding the use of the property.

Entranceway and parking lot will be surfaced in gravel. The estimated location and shape of parking lot is as shown on the drawing. The estimated size of the parking lot is _____ . Actual size, shape and turning radius for parking will be as determined by the New Milford Public Works Engineers, but the capacity of the parking lot may not exceed _____ parking spaces, and the parking area will be bordered with stones or other barriers to prevent its gradual expansion through use.

REMOVAL OF TREES, SHRUBS, AND ALTERATION OF GROUNDCOVER

The development of the parking lot, the entranceway and access road, and trails, the picnic areas, and possible camping sites, and the clearing of the outflow pipe to the pond will require some tree & shrub removal, and in the case of the parking and access road, disturbance to groundcover.

Inasmuch as possible, tree removal should be limited and selective, avoiding the largest trees, except where same are diseased. Tree removal and similar activities should be planned with the recognition that forest management takes place on CL&P's properties on a 5 or 10-year cycle, and consultation with the company's foresters should be initiated should Licensee desire to engage in such activities on CL&P's parcel.

The overall shrub and forest habitat along the pond edge of the Property should be preserved, except for clearing of shrubs in the immediate vicinity of the outflow (identified as "Outflow Pipe" in Attachment I) and such other changes in that immediate area as may be required to maintain, replace, and insure the functionality of that outflow. Similarly, the development of the picnic areas, trails, fishing sites, etc. (and any possible future camping areas) should retain the shady canopy over the Housatonic, and insure that activities do not degrade the groundcover along shoreline. Topsoil that is taken up should remain on the property. Gravel to fill in holes, etc. along roads may be taken from the property so long as all areas affected are stabilized.

ACCESSWAY AND TRAILS.

The accessway into the property, linking up with the adjacent Sega property, as shown on Attachment I (identified as "Proposed Main Path of Access"), should inasmuch as possible, follow the old road and/or the major ATV trail across the property. Holes on this accessway should be filled, adjacent slopes stabilized and surface waters redirected as necessary to provide a safe and stable single-lane graveled surface suitable for light vehicular traffic.

Trail locations on the map are an estimation of existing trails created by illegal ATV use and light pedestrian traffic. The new trail system should follow these old trails to the extent necessary to avoid more damage to the property. However, steep trails, particularly those channeling surface water, should be closed, particularly to horseback riding. Trails should also remain as narrow as possible so as to channel vehicular (maintenance) traffic onto the main accessway while providing logical access to picnic, camping and fishing areas.

Trail marking intended for the new trail systems should not be installed without first obscuring all the numerous trail markings currently on trees (these appear to belong to illegal uses of the property by ATV's).

BOATING.

No trailers are allowed on the property. Kayaks, canoes, rafts and similar small, non-motorized boats utilizing the Housatonic River are permitted to gain access to and from the river via the Property.

HUNTING.

The Licensor does not object to hunting on the property provided that:

1. it is done in conformance with all state and local regulations,
2. it is managed by the Licensee, as an adjunct to hunting on its own Sega property, setting appropriate limits and overseeing the activity to make sure there are no violations, and that violators, if any, are denied future permissions.
3. the Licensor is given notice in advance as to how the Licensee will meet the above conditions. The Licensor reserves the right to close down hunting on the property at any time.

HIKING/RUNNING/CROSS-COUNTRY SKIING/MOUNTAIN BIKING

Hiking, running, mountain biking and cross-country skiing are all permitted activities on the Property.

HORSEBACK RIDING.

Horseback Riding is permitted on the Property. Licensee is responsible for regulating and/or prohibiting Horseback Riding on or to specific trails on the Property.

MODIFICATION OF ATTACHMENT II

This Attachment may be modified by the Licensor and Licensee from time to time by written agreement so as to allow changes to the foregoing permitted uses and/or alterations/improvements.

ATTACHMENT C

Project team resumes

DANIEL CALHOUN
48 Goslee Road
Bantam, CT 06750
(860) 567-1451

EDUCATION:

Feb. 2003 – Feb. 2003 **Continuing Education – Athletic Field Construction & Maintenance**
Cook College at Rutgers University, New Brunswick, NJ

Sept. 1989 – Dec. 1991 **Bachelor of Science - Recreation & Leisure Studies**
Southern Connecticut State University, New Haven, CT

Sept. 1985 – June 1989 **Associates of Science - Recreation Leadership**
Northwestern Connecticut Community College, CT

EXPERIENCE:

OCT. 2001- Present **DIRECTOR OF PARKS & RECREATION**
TOWN OF NEW MILFORD, CT

- Plan, organize, and administer a varied recreational program
- Develop and administer policies and procedures
- Hire, train & supervise Park Maintenance Staff
- Hire, train & oversee recreation programs and staff
- Purchase recreational & park equipment and supplies
- Prepare annual budget and a monthly reports
- Manage, maintain & development of over 500 acres of parklands

OCT. 2000 – OCT. 2001 **ASSISTANT DIRECTOR OF PARKS & RECREATION**
TOWN OF NEW MILFORD, CT

Mar. 1997 – Dec. 2000 **Director of Beach & Recreation**
Town of Morris, Morris, CT

Mar. 1992 – Oct. 2001 **Special Education Paraprofessional**
Litchfield Board of Education, Litchfield, CT

Mar. 1986 – Oct. 2001 **Athletic Coach**
Litchfield Board of Education, Litchfield, CT
JV/Varsity Girls Softball, Mid/Junior Varsity Soccer, Mid/Junior Varsity
Baseball.

June 1990 – Aug. 1990 **Recreation Counselor (Internship)**
Wallingford Parks & Recreation Department, Wallingford, CT

Mar. 1989 – June 1989 **Recreation Assistant (Internship)**
Litchfield Association for Retarded Citizens, Torrington, CT

ORGANIZATIONS:

Sept. 2006- Present Litchfield Parks & Recreation Commission Member

Feb. 1997 - Present National Recreation & Park Association Member

Feb. 1997 - Present Connecticut Recreation & Park Association Member

May 1993 - 2001 Litchfield Area Men's Softball League - *Commissioner*

Mar. 1997 - 1999 Bantam Civic Association Member

Sept. 1978 - Present B.P.O. Elks Member

Sept. 1985 – Dec. 1991 Recreation Club Member (NCCC, SCSU)

CERTIFICATIONS:

Red Cross First Aid and CPR, Scuba Diving, Public Service License,
Certified Athletic Coach in CT.

REFERENCES:

Furnished On Request.

JAMES FERLOW
69 HILLTOP VIEW ROAD
NEW MILFORD, CONNECTICUT

EDUCATION

- 1986 Allegheny College, Meadville, PA - Bachelor of Science, Biology
Comprehensive Thesis: "The Diversity of Secondary Defense Chemicals: Alkaloid Diversity in Aquatic Plants" May 2, 1986
- 1987 Rutgers University, Cook College - Continuing Professional Education
"Understanding Wetland Soils"
"Stratigraphy, Structure, Geophysics, and Geohydrology of New Jersey Plain"
- 1989 "Environmental Law and Regulation"
"Understanding Soil Conditions of Wetlands"
- 1993, 94, 95,96 State of Connecticut, Department of Environmental Protection, Commissioner's Courses
98,99,2000,01
- 1997 State of Connecticut, Department of Environmental Protection, Municipal Inland Wetlands Commissioners Comprehensive Training Program pursuant to Connecticut General Statute Section 22a-39(n). Certificate Granted.

PROFESSIONAL EXPERIENCE

1996 to present

Town of New Milford, New Milford, CT

Wetlands Enforcement Officer/ Department Head of Wetlands Agency

- Provide pre-development site assessment, site investigation for compliance with permit conditions, building plans, erosion control and best management practice.
- Research proposals, violations and complaints utilizing databases, air photos, maps, soils books and on-site datum.
- Provide interpretation of local and state regulations and policies.
- Prepare cease and correct orders, violation summaries and legal notices.
- Attend and present facts and findings for applications for permits, cease and correct hearings, public hearings, and meetings as required.
- Provide public education through lectures, conferences, and local media.
- Provide recommendations to applicants regarding alternative analysis and mitigation techniques.
- Provide recommendations for permit conditions and permit denial decisions.
- Create and defend budget recommendations and implementation of the budget.
- Hire and oversee personnel and conduct personnel performance evaluations
- Prepare documentation and provide expert court testimony for wetland litigation proceedings and presentations before the Connecticut Siting Council.
- Provide recommendations on local regulation revisions, wetlands and watercourse map amendments and comments on Connecticut legislation amendments on behalf of the Town.
- Responsible for meeting all DEP and statutory reporting requirements.

1991 to present

Environmental Consulting, Private

- Expert trial testimony and reports
- Environmental monitoring
- Wetland delineation
- Erosion control design

1992 to 1996

Town of Greenwich, Greenwich, CT

Wetlands Compliance Officer

- Provide pre-development site assessment, site investigation for compliance with permit conditions, building plans, erosion control and best management practice.
- Research proposals, violations and complaints utilizing databases, air photos, maps, soils books and on-site datum.
- Prepare cease and correct orders, violation summaries and legal notices.
- Attend and present facts and findings for cease and correct hearings, public hearings, and meetings as required.
- Provide public education through lectures, conferences, and local media.
- Provide recommendations to applicants regarding alternative analysis and mitigation techniques.

1989 to 1991

I.E.P. Inc., Danbury, CT

- Provide interpretation of local, state and federal regulations and policies.
- Complete regulatory forms required by local, state, and federal agencies
- Public presentation for Environmental Commissions and Public Hearings.
- Wetland delineation based upon the "Federal Manual for Identifying and Delineating Jurisdictional Wetlands".
- Preparation of Environmental Assessments, Environmental Impact Statements, Wetland Delineation Reports, Coastal Area Management Reports, and Biological Evaluations.
- Preparation of preliminary drawings and illustrative graphics.
- Provide alternatives analysis and recommendations of mitigation techniques.

1986 to 1989

Environmental Design Associates, PC (EDA), Wilton, CT

- Preparation of Environmental Assessments, Environmental Impact Statements, Wetland Delineation Reports, Coastal Area Management Reports, and Biological Evaluations.
- Field identification of wetland limits according to local, state, and federal laws.
- Preparation of local, state, and federal wetland permit applications.
- Preparation of preliminary drawings and illustrative graphics.
- Provide alternatives analysis and recommendations of mitigation techniques.

1985 & 1986
summers

Bartlett Arboretum, University of Connecticut, Stamford, CT

- Plant taxonomy
- Vegetation planting, care, and habitat work and techniques.

**RESEARCH and
PUBLICATIONS**

“Development Related Storm Runoff Renovation”

co-authored by Donald L. Ferlow, Proceeding of the International Wetland Symposium, Wetlands and River Corridor Management - July 5-9, 1989 Charleston, South Carolina; The Association of Wetland Managers, Inc.

“Functional Values and Ecosystem Integrity Within Five Man-made Wetland Ecosystems”

co-authored by Judith A. Slayback, Christine M. Suarez-Murias, and Donald I. Ferlow, presented at the 10th Annual Society of Wetlands Scientists National Convention, June, 1989

“Watershed Approach to Environmental Site Assessment”

co-authored by George Benson and Christine M. Suarez-Murias - New York Real Estate Journal, October 15, 1990, pg. 13.

“If You Plant It, Will It Grow”

co-authored by Donald L. Ferlow; Proceeding of “Quebec 2000 International Wetland Symposium” – August 6 – 12, 2000, Quebec Canada. Presented by Donald L. Ferlow.

“The Role of Wetlands Science Within the Regulatory Venue: The Value of Wetland Science Education for Applicants, Professionals and Commissions”.

co-authored by Donald L. Ferlow; Proceeding of “Quebec 2000 International Wetland Symposium” – August 6 – 12, 2000, Quebec Canada. Presented by James B. Ferlow.

PROFESSIONAL AFFILIATIONS

- | | |
|-----------------|---|
| 1988 to present | Society of Wetland Scientists - presenter at the 10th Annual National Conference, Orlando, Florida, June 1, 2, and 3, 1989 and presenter at “Quebec 2000 International Wetland Symposium; August 6 –12, 2000 Quebec Canada. |
| 1989 to present | Soil and Water Conservation Society |
| 1996 to present | Connecticut Association of Inland Wetland and Conservation Commissions – Executive board member since 1996, Officer since 2001. |

Michael F. Zarba, P.E.

49 Meadowwood Drive
New Milford, CT 06776

Cell Number: (203) 223-7042
Home Number: (860) 354-8487
Email: miloand2@yahoo.com

Professional Engineer with sixteen years of municipal and consultant engineering experience seeking a responsible management and administrative position in a large, professional, and diverse municipal Public Works Organization.

TOWN OF NEW MILFORD Director of Public Works

2006 – Present

- Responsible for the total operation and management (planning, coordination and supervision) of the Public Works Department which includes the Highway and Vehicle Maintenance Department, Engineering Department, Facilities Maintenance Department and the Transfer/Recycling Center.
- Prepare annual operating and capital budget requests, including the update of the five year capital plan. Operating budget for all departments is approximately \$5 million and Capital budget is approximately \$2 million.
- Oversee and direct all bid contracts for outside consulting/engineering services, roadway construction activities, facility maintenance services and all departmental materials and supplies. This includes management and oversight of all contracts including those with state and federal agencies.
- Administers all collective bargaining agreements for employees covered by union contracts, including collective bargaining negotiations and dispute resolution procedures.

CITY OF STAMFORD Supervisor of Highways

1996 – Present

- Responsible for maintaining 315 miles of roads- LARGEST road network in the state of CT
- Prepare and manage department with \$8 million dollar annual operating and capital budget. \$5.2 million operational budget includes road maintenance, snow removal, signs, and parking meters and over 85 full time and seasonal employees. Capital budget of \$3 million consists of twenty projects including large equipment purchases and environmental compliance activities.
- Responsible for storm water management, including permitting and implementation of NPDES for the only Phase I municipal system in the State of CT
- Prepares bid specifications and recommends awards, administers eight annual contracts and multiple one-time contracts, including paving, sidewalks, road reconstruction, equipment rental, vehicle and highway equipment, and environmental compliance.
- Initiated citywide pavement management system to track status of given roads, plan future work, and evaluate results for maintenance and repair methods, including micro-surfacing, overlay, hot or cold in-place recycling, and reclamation.
- Improved job safety and reduced worker's compensation claims by 33% through training.
- Managed employee relations issues, including contract negotiation and grievance arbitration
- Highway Department awarded **"Distinguished Service Award" from Connecticut Association of Street and Highway Officials, 2002 and "Environmental Excellence in Salt Management" by the Salt Institute, 2004**
- Routinely sits on consultant selection committees, interviewing and selecting professional consultant and engineering firms to work for the City on bridge, building and roadway design projects

PURCELL ASSOCIATES Design Engineer

1995 – 1996

- Prepared detailed design specifications for road reconstruction projects
- Daily supervision of design process, including hydrology/hydraulic analysis, surveying analysis, Autocad mapping and plan/sheet setup, and determination of roadway design criteria
- Responsible for presenting to both clients and the general public at informational meetings and Public Hearings.
- Lead Design Engineer for the Route 82/85 Intersection and Roadway Improvements in Montville, CT. Project consisted of over three miles of roadway improvements including the upgrade of the Route 82/85 intersection to include turn lanes, accident reduction and increased intersection efficiency.
- Served as liaison Town Engineer to various town Planning and Zoning Commissions for site plan review, traffic impact analysis, drainage calculation review, and effects on public infrastructure

TOWN OF NEW MILFORD
Town Engineer

1990 - 1995

- Responsible for coordination, design, and supervision of all public works projects in largest area town in the state, including roads, bridges, storm sewers, sidewalks, parking areas, and municipal buildings. Supervised and managed a staff of three administrative, 25 Highway department, 4 Vehicle maintenance, 5 Building maintenance, and 3 Recycling center employees
- Project Manager for state funded Cross Road and Wells Road Bridge Reconstruction projects. Performed contract preparation, field inspection; coordinated with consulting engineers, contractor, and state representatives,
- Professional consultant of all the Land Use boards for site plan review and engineering consultation and non voting member of the New Milford Planning Commission
- Assisted Public Works Director in budgetary planning for capital planning
- Acting Public Works Director of highway, building maintenance, recycling/ waste transfer station, and vehicle maintenance in Director's absence

CHANCE & CAUSSEAU
Staff Engineer

1989 - 1990

- Designed site grading plans, water and sewer systems, storm water management systems & parking areas for multi-unit living complexes.
- Performed hydrologic and hydraulic studies and prepared drainage calculations for land use commission review and approval.
- Designed and prepared roadway plans, profiles and cross sections with storm water systems, water and sewer systems included
- Performed and prepared all necessary drainage, water and sewer calculations for permit approvals.

EDUCATION & TRAINING

Education

- University of Rhode Island, B S Civil Engineering
- State of Connecticut Licensed Professional Engineer (Lic. # 18408)

Training (2000-04)

- New England chapter APWA: Environmental Compliance workshop
- National Seminars Group: Attitude problems in the workplace
- University of Wisconsin
 - Managing Snow and Ice Control Operations
 - Construction Contract Interpretation
 - Implementing a Sidewalk Management System
- Lorman Education Services: ADA, FMLA and Worker's Compensation in Connecticut

• UCONN

- Expecting inspections
- Principles of Road Management System
- All About Asphalt pavements
- On the Job Safety
- Snow & Ice Control
- Managing, Motivating & Communicating your way to successful supervision
- Basics of a Good Road
- Principles of drainage for Local Roads
- Asset management & GASB 34
- ASCE Continuing Education: Roadside Design
- Rockhurst University: the Essentials of OSHA Compliance
- Texas Engineering Extension Service: Public Works: Preparing and Responding to WMD/Terrorism Incidents

PROFESSIONAL ASSOCIATIONS

- American Society of Civil Engineers
- American Public Works Association
- Connecticut Association of Street and Highway Officials

MANAGERIAL AND ADMINISTRATION SKILLS

- Experienced manager of union, seasonal and professional employees
- Extensive employee relations and union management experience
- Strong financial planner able to execute and show operational and capital expenditures
- Skilled in standard office software and familiar with wide range of public works software options
- Excellent project and operational management skills
- Significant experience in bid preparation, selection, and implementation process
- Knowledgeable in State and Federal grant processes
- Skilled in working on multi-departmental programs and projects

Thomas J. Sprong
98 Transylvania Road
Roxbury, CT 06783
860-210-1480
tsprong@charter.net

EXPERIENCE SUMMARY:

Fifteen years of civil and environmental engineering experience, with an emphasis on the design, construction and management of municipal facilities. Extensive experience in the design and construction of water, wastewater and remedial facilities for State and municipal authorities. Preparation of numerous contract documents for public bidding and experience in all facets of procurement, ensuring that technical, financial and political risks are appropriately shared between public and private sector partners. Experience in project finance includes strategic project planning, budget forecasting and financial modeling. Routine interaction with regulatory agencies.

PROJECT MANAGEMENT AND CONSULTING EXPERIENCE:

2006 – Present, Town Engineer, Town of New Milford, Connecticut

Responsible for the operation and management of the Engineering Department within the Department of Public Works, which also includes interfacing with the Highway Department and Facilities Maintenance Department.

- Preparation of annual Engineering Department capital and operating budgets for inclusion in the five-year capital plan for the Town.
- Direct and oversee all municipal engineering and construction projects, including roadway construction and repair, stormwater drainage installation and repair, bridge inspection and replacement / restoration, and all other public infrastructure improvements
- Technical Liaison to Planning, Zoning, and Inland Wetlands and Watercourses Commissions for site plan review, hydraulic and hydrology review, drainage calculations review and overall impact analysis on public infrastructure
- Coordination and oversight of engineering staff performing design of public improvement projects, including preparation of bid documents for public bidding purposes
- Oversight and coordination of engineering staff conducting construction oversight and inspection for permitted public improvements
- Coordinate and interface with state agencies for permitting of Town facilities, including the transfer/recycling center and municipal stormwater management program

1995 – 2006, Senior Project Engineer, Malcolm Pirnie, Inc., White Plains, NY

Represented Malcolm Pirnie as part of a joint venture team of engineers responsible for design services during construction for a New York City DEP wastewater upgrade project in excess of 600 million dollars in constructed value.

- Managed personnel and coordinated contractor inquiries and requests for information in regard to the interpretation of project contract documents. Responsibilities included tracking of all information and coordination of all responses electronically through the use of project management software for integration with the project web site.
- Coordinated and managed all necessary changes to the contract documents, including interfacing with design specialty groups. This included preparation of documents to

forward to the contractor and the client for resolution and integration into the project. Generated and managed change orders resulting from necessary project design modifications and coordinated the proper documents to be presented to the client for review and approval.

- Interfaced with the Resident Engineering staff to facilitate identification and resolution of project construction problems and coordinated issues with the design specialty groups responsible for initial project design to minimize financial impact to the client and project schedule.

Represented state and municipal clients in Connecticut, New York and New Jersey on water and wastewater improvement projects in excess of 12 million dollars in total constructed value.

- Managed contract operations and personnel coordination for water and wastewater facility design, construction and procurement. Responsibilities included strategic planning, proposal preparation and evaluation, client presentation, development of contract documents, procurement, and contract negotiations.
- Designed facilities including water distribution systems, sewer systems, roads, retaining walls, embankments, landscaping and restoration of wetland habitat.
- Managed contract operations and personnel coordination for remedial investigation and mitigation strategies for contaminated groundwater and soil sites. Responsibilities included contaminant identification, evaluation of remedial alternatives, strategic planning, proposal preparation, design of remedial systems, preparation of contract documents, procurement, contract negotiations, and construction management.
- Prepared storm water pollution protection plans and facility best management practices plans for private clients.

1992 – 1995, Engineer, Leggette, Brashears and Graham, Inc., Trumbull, CT

Conducted phased site assessments and evaluations of industrial, commercial, residential, and vacant properties for State and municipal agencies and private clients. Designed and implemented soil and groundwater remedial systems, including: pump and treat; soil vapor extraction; waste excavation, characterization, and disposal; and waste encapsulation. Responsibilities included proposal preparation, coordination, planning, supervision of field investigations, and report preparation.

EDUCATION: Bachelor of Science, Civil/Environmental Engineering, 1992.
Northeastern University, Boston, Massachusetts.

CERTIFICATION: Licensed Professional Engineer, State of Connecticut (Lic. #20033)

COMPUTER SKILLS: Extensive experience using Microsoft Word, Excel, Outlook, Project, PowerPoint, and Access; Primavera Expedition, and AutoCAD 2000-2005.

PROFESSIONAL ASSOCIATIONS: American Society of Civil Engineers, Connecticut Association of Street and Highway Officials