



STATE OF CONNECTICUT DEPARTMENT OF ENVIRONMENTAL PROTECTION



January 2011 Open Space Report
to the
Finance, Revenue and Bonding Committee
and the
State Bond Commission

Overview:

Section 22a-6v of the General Statutes of Connecticut requires the Commissioner of Environmental Protection to submit a report to the joint standing committee of the General Assembly having cognizance of matters relating to finance, revenue and bonding and to the State Bond Commission each month. The report provides information on the acquisition of land or interests in land by the state, a municipality, water company or nonprofit organization using funds authorized for the Open Space and Watershed Land Acquisition Program established under Sections 7-131d and the Recreation and Natural Heritage Trust Program established under Sections 23-73 to 23-79 of the Connecticut General Statutes.

Open Space and Watershed Land Acquisition Grant Program:

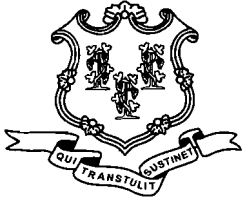
The Open Space and Watershed Land Acquisition Grant Program provides grants to municipalities and private nonprofit land conservation organizations for the acquisition of open space land and to water companies to acquire land to be classified as Class I or Class II watershed land. The State of Connecticut receives a conservation and public access easement on property acquired to ensure that the property will be protected and available to residents of Connecticut as open space in perpetuity. There were no open space and watershed acquisition grants closed in January 2011.

Recreation and Natural Heritage Trust Program:

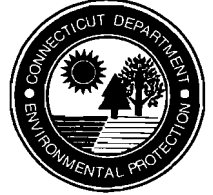
The Recreation and Natural Heritage Trust Program is the State of Connecticut's primary program for the acquisition of lands for the beneficial use and enjoyment of the public as additions to the State's system of parks, forests, wildlife, fisheries and natural resource management areas. The program acquires land that represents the ecological diversity of Connecticut, including natural features such as rivers, mountainous areas, coastal systems and their natural areas, in order to ensure the conservation of such land for recreational, scientific, educational, cultural and aesthetic purposes. There were no Recreation and Natural Heritage Trust Program acquisitions closed in January 2011.

Robert E. Kelso
for Amey W. Marrella, Commissioner
Department of Environmental Protection

2-7-11
Date



STATE OF CONNECTICUT DEPARTMENT OF ENVIRONMENTAL PROTECTION



February 2011 Open Space Report
to the
Finance, Revenue and Bonding Committee
and the
State Bond Commission

Overview:

Section 22a-6v of the General Statutes of Connecticut requires the Commissioner of Environmental Protection to submit a report to the joint standing committee of the General Assembly having cognizance of matters relating to finance, revenue and bonding and to the State Bond Commission each month. The report provides information on the acquisition of land or interests in land by the state, a municipality, water company or nonprofit organization using funds authorized for the Open Space and Watershed Land Acquisition Program established under Sections 7-131d and the Recreation and Natural Heritage Trust Program established under Sections 23-73 to 23-79 of the Connecticut General Statutes.

Open Space and Watershed Land Acquisition Grant Program:

The Open Space and Watershed Land Acquisition Grant Program provides grants to municipalities and private nonprofit land conservation organizations for the acquisition of open space land and to water companies to acquire land to be classified as Class I or Class II watershed land. The State of Connecticut receives a conservation and public access easement on property acquired to ensure that the property will be protected and available to residents of Connecticut as open space in perpetuity. The following grant was closed in February 2011.

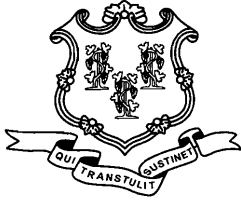
Sponsor	Project	Acres
Groton Open Space Association	Sheep Farm	62.75

Recreation and Natural Heritage Trust Program:

The Recreation and Natural Heritage Trust Program is the State of Connecticut's primary program for the acquisition of lands for the beneficial use and enjoyment of the public as additions to the State's system of parks, forests, wildlife, fisheries and natural resource management areas. The program acquires land that represents the ecological diversity of Connecticut, including natural features such as rivers, mountainous areas, coastal systems and their natural areas, in order to ensure the conservation of such land for recreational, scientific, educational, cultural and aesthetic purposes. There were no Recreation and Natural Heritage Trust Program acquisitions closed in February 2011.


Amey Marella, Deputy Commissioner
Department of Environmental Protection

3/17/11
Date



STATE OF CONNECTICUT DEPARTMENT OF ENVIRONMENTAL PROTECTION



March 2011 Open Space Report
to the
Finance, Revenue and Bonding Committee
and the
State Bond Commission

Overview:

Section 22a-6v of the General Statutes of Connecticut requires the Commissioner of Environmental Protection to submit a report to the joint standing committee of the General Assembly having cognizance of matters relating to finance, revenue and bonding and to the State Bond Commission each month. The report provides information on the acquisition of land or interests in land by the state, a municipality, water company or nonprofit organization using funds authorized for the Open Space and Watershed Land Acquisition Program established under Sections 7-131d and the Recreation and Natural Heritage Trust Program established under Sections 23-73 to 23-79 of the Connecticut General Statutes.

Open Space and Watershed Land Acquisition Grant Program:

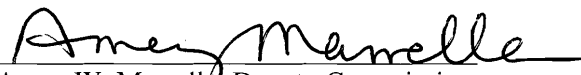
The Open Space and Watershed Land Acquisition Grant Program provides grants to municipalities and private nonprofit land conservation organizations for the acquisition of open space land and to water companies to acquire land to be classified as Class I or Class II watershed land. The State of Connecticut receives a conservation and public access easement on property acquired to ensure that the property will be protected and available to residents of Connecticut as open space in perpetuity. The following grants were closed in March 2011.

Sponsor	Project	Acres
City of Middletown	Brock Farm Easement	43.4
The Nature Conservancy	Salem Valley Corp. Forest Land Easement – Salem & East Haddam	369.77

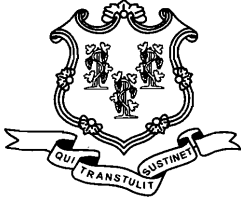
Recreation and Natural Heritage Trust Program:

The Recreation and Natural Heritage Trust Program is the State of Connecticut’s primary program for the acquisition of lands for the beneficial use and enjoyment of the public as additions to the State’s system of parks, forests, wildlife, fisheries and natural resource management areas. The program acquires land that represents the ecological diversity of Connecticut, including natural features such as rivers, mountainous areas, coastal systems and their natural areas, in order to ensure the conservation of such land for recreational, scientific, educational, cultural and aesthetic purposes. The following acquisitions were closed in March 2011.

Property Name	Location	Cooperator	Match Share	Fee Acreage	Easement Restrictions or R.O.W.	State Purchase Price	Purpose of Acquisition
Sablitz	Hamden	N/A	0	25.21		\$700,000.00	Addition to Naugatuck SF
Kibbe	Ellington	N/A	0	17.74		\$35,500.00	Addition to Shenipsit SF


Amey W. Marrella, Deputy Commissioner
Department of Environmental Protection

4/12/11
Date



STATE OF CONNECTICUT DEPARTMENT OF ENVIRONMENTAL PROTECTION



April 2011 Open Space Report
to the
Finance, Revenue and Bonding Committee
and the
State Bond Commission

Overview:

Section 22a-6v of the General Statutes of Connecticut requires the Commissioner of Environmental Protection to submit a report to the joint standing committee of the General Assembly having cognizance of matters relating to finance, revenue and bonding and to the State Bond Commission each month. The report provides information on the acquisition of land or interests in land by the state, a municipality, water company or nonprofit organization using funds authorized for the Open Space and Watershed Land Acquisition Program established under Sections 7-131d and the Recreation and Natural Heritage Trust Program established under Sections 23-73 to 23-79 of the Connecticut General Statutes.

Open Space and Watershed Land Acquisition Grant Program:

The Open Space and Watershed Land Acquisition Grant Program provides grants to municipalities and private nonprofit land conservation organizations for the acquisition of open space land and to water companies to acquire land to be classified as Class I or Class II watershed land. The State of Connecticut receives a conservation and public access easement on property acquired to ensure that the property will be protected and available to residents of Connecticut as open space in perpetuity. The following grants were closed in April 2011.

Sponsor	Project	Acres
Northern Conn. Land Trust	Lee Property, Ellington	29.727
Southbury Land Trust	Daffodil Hill Farm, Southbury	15.159

Recreation and Natural Heritage Trust Program:

The Recreation and Natural Heritage Trust Program is the State of Connecticut's primary program for the acquisition of lands for the beneficial use and enjoyment of the public as additions to the State's system of parks, forests, wildlife, fisheries and natural resource management areas. The program acquires land that represents the ecological diversity of Connecticut, including natural features such as rivers, mountainous areas, coastal systems and their natural areas, in order to ensure the conservation of such land for recreational, scientific, educational, cultural and aesthetic purposes. There were no Recreation and Natural Heritage Trust Program acquisitions closed in April 2011.

Amey Marrella

Amey W. Marrella, Deputy Commissioner
Department of Environmental Protection

Date 5/9/11



STATE OF CONNECTICUT

DEPARTMENT OF ENVIRONMENTAL PROTECTION



May 2011 Open Space Report
to the
Finance, Revenue and Bonding Committee
and the
State Bond Commission

Overview:

Section 22a-6v of the General Statutes of Connecticut requires the Commissioner of Environmental Protection to submit a report to the joint standing committee of the General Assembly having cognizance of matters relating to finance, revenue and bonding and to the State Bond Commission each month. The report provides information on the acquisition of land or interests in land by the state, a municipality, water company or nonprofit organization using funds authorized for the Open Space and Watershed Land Acquisition Program established under Sections 7-131d and the Recreation and Natural Heritage Trust Program established under Sections 23-73 to 23-79 of the Connecticut General Statutes.

Open Space and Watershed Land Acquisition Grant Program:

The Open Space and Watershed Land Acquisition Grant Program provides grants to municipalities and private nonprofit land conservation organizations for the acquisition of open space land and to water companies to acquire land to be classified as Class I or Class II watershed land. The State of Connecticut receives a conservation and public access easement on property acquired to ensure that the property will be protected and available to residents of Connecticut as open space in perpetuity. The following grants were closed in May 2011.

Sponsor	Project	Acres
Granby Land Trust, Inc.	Crane Preserve, Granby	38.323
Kongscut Land Trust, Inc.	Bogdan Property, Glastonbury	5.441

Recreation and Natural Heritage Trust Program:

The Recreation and Natural Heritage Trust Program is the State of Connecticut's primary program for the acquisition of lands for the beneficial use and enjoyment of the public as additions to the State's system of parks, forests, wildlife, fisheries and natural resource management areas. The program acquires land that represents the ecological diversity of Connecticut, including natural features such as rivers, mountainous areas, coastal systems and their natural areas, in order to ensure the conservation of such land for recreational, scientific, educational, cultural and aesthetic purposes. The following acquisition was closed in May 2011.

Property Name	Location	Cooperator	Match Share	Fee Acreage	Easement Restrictions or R.O.W.	State Purchase Price	Purpose of Acquisition
Crowley 2	Stonington	Conservation Partners USDA	\$183,250.00 \$705,000.00	0	15.79	\$1,512,500.00	Addition to Barn Island WMA

Robert E. Kaliszewski
for Daniel C. Esty, Commissioner
Department of Environmental Protection
Robert E. Kaliszewski, Director
Planning & Program Development

6/22/11
Date



Connecticut Department of

**ENERGY &
ENVIRONMENTAL
PROTECTION**

**Open Space Report to the Finance, Revenue and Bonding Committee and the
State Bond Commission**

June 2011

Overview

Section 22a-6v of the General Statutes of Connecticut requires the Commissioner of Environmental Protection to submit a report to the joint standing committee of the General Assembly having cognizance of matters relating to finance, revenue and bonding and to the State Bond Commission each month. The report provides information on the acquisition of land or interests in land by the state, a municipality, water company or nonprofit organization using funds authorized for the Open Space and Watershed Land Acquisition Program established under Sections 7-131d and the Recreation and Natural Heritage Trust Program established under Sections 23-73 to 23-79 of the Connecticut General Statutes.

Open Space and Watershed Land Acquisition Grant Program

The Open Space and Watershed Land Acquisition Grant Program provides grants to municipalities and private nonprofit land conservation organizations for the acquisition of open space land and to water companies to acquire land to be classified as Class I or Class II watershed land. The State of Connecticut receives a conservation and public access easement on property acquired to ensure that the property will be protected and available to residents of Connecticut as open space in perpetuity. The following grants were closed in June 2011. Additional information on these projects follows.

Sponsor	Project	Acres
Branford Land Trust, Inc.	Pieper Property, Branford	23.981
Town of New Fairfield	Keeler Property, New Fairfield	10.744
Town of Newtown	Ferris Farm, Newtown	68.916
Town of Wethersfield	Wilkus Farm, Wethersfield	68.847
Madison Land Conservation Trust	Bauermeister Property, Madison	77.06
Steep Rock Association	Bronson Sabbaday Acquisition, Washington	68.9163

Recreation and Natural Heritage Trust Program

The Recreation and Natural Heritage Trust Program is the State of Connecticut's primary program for the acquisition of lands for the beneficial use and enjoyment of the public as additions to the State's system of parks, forests, wildlife, fisheries and natural resource management areas. The program acquires land that represents the ecological diversity of Connecticut, including natural features such as rivers, mountainous areas, coastal systems and their natural areas, in order to ensure the conservation of such land for recreational, scientific, educational, cultural and aesthetic purposes. The following acquisition was closed in June 2011. Additional information on this project follows.

Property Name	Location	Cooperator	Match Share	Fee Acreage	Easement Restrictions or R.O.W.	State Purchase Price	Purpose of Acquisition
Clarke	Ellington	-		11.04		\$22,000	Addition to Shenipsit S.F.

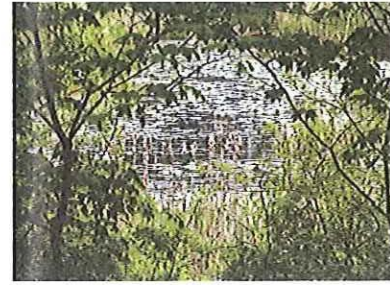
Robert E. Kaliszewski
for Daniel C. Esty, Commissioner
Department of Energy and Environmental Protection

Robert E. Kaliszewski
Director, Planning Program
Development

August 3, 2011
Date

**Branford Land Trust, Inc. – Pieper Property, Branford
Fee Acquisition**

This 23.981 acre property lies within the Pigsah Brook/Supply Ponds Watershed and is part of an existing greenway including other OSWA funded properties such as the Queach Property and the Saltonstall Mountain Property. It is mostly wooded with several vernal pools and a varied wildlife habitat.



**Town of New Fairfield – Keeler Property, New Fairfield
Fee Acquisition**

This parcel creates a greenway between two sections of the Pootatuck State Forest and enables public access to the western section of the Forest, which was previously landlocked, with no public access. The parcel contains steep slopes, rocky outcrops and a highly sophisticated trail system. It is mostly forested with wetlands at the SE side.

**Town of Newtown – Ferris Farm
Easement Acquisition**

This is the last operating dairy farm in Fairfield County with the Ferris Acres Creamery, producing ice cream since 1864. 23% of the site contains prime farmland soils, including hay and corn. There are also open meadows, pastures, forested areas, high-quality watercourses and wetlands. The eastern parcel is 53.6 acres of active farmland and the western portion contains the public access trail, the Creamery and dairy farm buildings.



**Steeprock Association – Bronson Sabbaday Acquisition, Washington
Fee Purchase**

This property is northeasterly of Steep Rock’s Hubbard Conservation Easement, in the Hidden Valley Preserve’s drumlin formation known as Baldwin Knoll. It will expand upon existing trails around active agricultural fields and provide outstanding views as well as access to Bantam River (300’ of frontage for fishing). Steep Rock Association hopes to continue the agricultural (corn) farming operation.

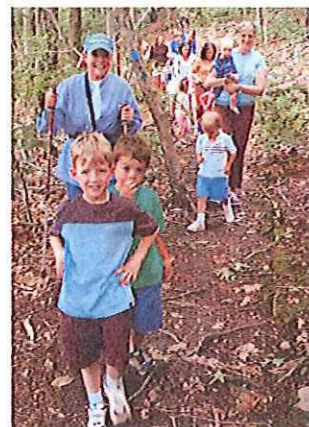
**Town of Wethersfield – Wilkus Farm
Fee Acquisition**

Three parcels are included in this 81 acre purchase. The two parcels on Willow Street are an important symbol of the Town’s agricultural history with prime farmland soils and actively managed hayfields, providing an important habitat for grassland bird species such as the American Kestrel, a species of Greatest Conservation Need. The third parcel, on Thornbush Road, is adjacent to the 1860 Reservoir, providing greatly needed access for passive recreational opportunities and protecting the quality of Goff Brook, a stream that drains into the CT River.



**Madison Land Conservation Trust – Bauermeister Property
Fee Purchase**

This property is in the northeast section of town (a mostly undeveloped area) and in the Hammonasset Watershed, adjacent to a public water supply. This land contains a mixed forest cover with a 1,000+ foot hiking trail, important wetlands and a varied topography for a wide range of critical habitats for a variety of wildlife species.



**Department of Energy and Environmental Protection – Clarke Property, Ellington
Fee Purchase**

This property is an 11.04 acre inholding within the Shenipsit State Forest. The Clarke property abuts another land locked parcel known as the Kibbe property that was acquired last month. The property was acquired utilizing funds made available through the Recreation and Natural Heritage Trust Program. The acquisition of this property alleviates boundary issues and helps prevent development within the forest.





Connecticut Department of

**ENERGY &
ENVIRONMENTAL
PROTECTION**

**Open Space Report to the Finance, Revenue and Bonding Committee and the
State Bond Commission**

July 2011

Overview

Section 22a-6v of the General Statutes of Connecticut requires the Commissioner of Environmental Protection to submit a report to the joint standing committee of the General Assembly having cognizance of matters relating to finance, revenue and bonding and to the State Bond Commission each month. The report provides information on the acquisition of land or interests in land by the state, a municipality, water company or nonprofit organization using funds authorized for the Open Space and Watershed Land Acquisition Program established under Sections 7-131d and the Recreation and Natural Heritage Trust Program established under Sections 23-73 to 23-79 of the Connecticut General Statutes.


Open Space and Watershed Land Acquisition Grant Program

The Open Space and Watershed Land Acquisition Grant Program provides grants to municipalities and private nonprofit land conservation organizations for the acquisition of open space land and to water companies to acquire land to be classified as Class I or Class II watershed land. The State of Connecticut receives a conservation and public access easement on property acquired to ensure that the property will be protected and available to residents of Connecticut as open space in perpetuity. There were no open space and watershed acquisition grants closed in July 2011.

Recreation and Natural Heritage Trust Program

The Recreation and Natural Heritage Trust Program is the State of Connecticut's primary program for the acquisition of lands for the beneficial use and enjoyment of the public as additions to the State's system of parks, forests, wildlife, fisheries and natural resource management areas. The program acquires land that represents the ecological diversity of Connecticut, including natural features such as rivers, mountainous areas, coastal systems and their natural areas, in order to ensure the conservation of such land for recreational, scientific, educational, cultural and aesthetic purposes. The following acquisition was closed in July 2011. Additional information on this project follows.

Property Name	Location	Cooperator	Match Share	Fee Acreage	Easement Restrictions or R.O.W.	State Purchase Price	Purpose of Acquisition
Corthouts/Homestead	Windsor	-		15.74		\$110,000	Addition to Mattianuck Sand Dunes SP


 for Daniel C. Esty, Commissioner, Department of Energy and Environmental Protection
 Robert E. Kaliszewski, Director, Planning & Program Development

8/11/11
 Date

Department of Energy and Environmental Protection – Courthouts-Homestead Property, Windsor Fee Purchase

The Courthouts-Homestead property is a 15.74 acre piece of land located at 200 East Pershing Street, Windsor, adjacent to the Mattianuck Sand Dunes State Park and Natural Area Preserve. The property was acquired from Homestead Investments, LLC on July 25, 2011 for \$110,000. The funds were made available through the George Dudley Seymour Trust. The sand dunes host a remarkable insect community including the significant finds of Big Sand Tiger Beetle and the Ghost Dune Tiger Beetle. Acquisition of this property will further protect the sand dunes and will provide an additional access point from the end of East Pershing Street.





Connecticut Department of

**ENERGY &
ENVIRONMENTAL
PROTECTION**

**Open Space Report to the Finance, Revenue and Bonding Committee and the
State Bond Commission**

August 2011

Overview

Section 22a-6v of the General Statutes of Connecticut requires the Commissioner of the Department of Energy & Environmental Protection to submit a report to the joint standing committee of the General Assembly having cognizance of matters relating to finance, revenue and bonding and to the State Bond Commission each month. The report provides information on the acquisition of land or interests in land by the state, a municipality, water company or nonprofit organization using funds authorized for the Open Space and Watershed Land Acquisition Program established under Sections 7-131d and the Recreation and Natural Heritage Trust Program established under Sections 23-73 to 23-79 of the Connecticut General Statutes.

Open Space and Watershed Land Acquisition Grant Program

The Open Space and Watershed Land Acquisition Grant Program provides grants to municipalities and private nonprofit land conservation organizations for the acquisition of open space land and to water companies to acquire land to be classified as Class I or Class II watershed land. The State of Connecticut receives a conservation and public access easement on property acquired to ensure that the property will be protected and available to residents of Connecticut as open space in perpetuity. The following grant was closed in August 2011. Additional information on this project follows.

Sponsor	Project	Acres
Town of Tolland	Luce Property	89.22

Recreation and Natural Heritage Trust Program

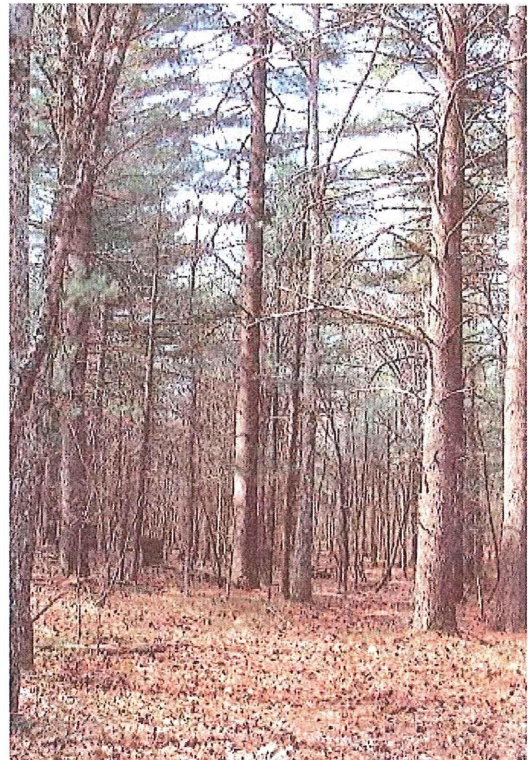
The Recreation and Natural Heritage Trust Program is the State of Connecticut's primary program for the acquisition of lands for the beneficial use and enjoyment of the public as additions to the State's system of parks, forests, wildlife, fisheries and natural resource management areas. The program acquires land that represents the ecological diversity of Connecticut, including natural features such as rivers, mountainous areas, coastal systems and their natural areas, in order to ensure the conservation of such land for recreational, scientific, educational, cultural and aesthetic purposes. There were no Recreation and Natural Heritage Trust Program acquisitions closed in August 2011.

Robert E. Kaliszewski
for Daniel C. Esty, Commissioner *Robert E. Kaliszewski, Director*
Department of Energy and Environmental Protection *Planning & Program Development*

9/7/11
Date

Town of Tolland – Luce Property, Tolland Fee Acquisition

The Luce Property protects 3000' on both sides of Charter Book, a tributary of the Skungamaug River. It is shown on the DEEP Natural Diversity Database, expanding upon a mile-long wildlife corridor adjacent to the 240-acre Charter Marsh Wildlife Refuge and 42 acres of town-owned open space. The property is comprised of hardwood and white pine forest with wooded swamp, riparian wetlands, brooks and ledge outcroppings. It is home to a wide array of wildlife including fox, bobcat, fisher, turkeys and deer. It provides passive recreational opportunities such as hiking, mountain biking, cross country skiing, nature viewing and wild trout fishing.





Open Space Report to the Finance, Revenue and Bonding Committee and the State Bond Commission

September 2011

Overview

In accordance with Connecticut General Statutes Section 22a-6v, the Department of Energy and Environmental Protection respectfully submits this monthly report to the joint standing committee of the General Assembly having cognizance of matters relating to finance, revenue and bonding and to the State Bond Commission. This report provides information on the acquisition of land or interests in land by the state, a municipality, water company or nonprofit organization using funds authorized for the Open Space and Watershed Land Acquisition Program established under sections 7-131d and the Recreation and Natural Heritage Trust Program established under sections 23-73 to 23-79 of the Connecticut General Statutes.

Open Space and Watershed Land Acquisition Grant Program

The Open Space and Watershed Land Acquisition Grant Program provides grants to municipalities and private nonprofit land conservation organizations for the acquisition of open space land and to water companies to acquire land to be classified as Class I or Class II watershed land. The State of Connecticut receives a conservation and public access easement on property acquired to ensure that the property will be protected and available to residents of Connecticut as open space in perpetuity. The following grant was closed in September 2011. Additional information on this project follows.

Sponsor	Project	Acres
Town of Canton	Carpenter Property	35.38 ±

Carpenter Property, Town of Canton Fee Purchase

This forested parcel, with frontage on Case Street in Northern Canton, provides a buffer for the McLean Game Refuge and land of Canton Land Conservation Trust. It contains a 100 foot wide pond and a skid road, suitable for a hiking path. The property is traversed by Sawmill Brook, a tributary of Cherry Brook, which runs south to the Farmington River. It contains a habitat for numerous breeding and migratory song birds.

Recreation and Natural Heritage Trust Program

The Recreation and Natural Heritage Trust Program is the State of Connecticut's primary program for the acquisition of lands for the beneficial use and enjoyment of the public as additions to the State's system of parks, forests, wildlife, fisheries and natural resource management areas. The program acquires land that represents the ecological diversity of Connecticut, including natural features such as rivers, mountainous areas, coastal systems and their natural areas, in order to ensure the conservation of such land for recreational, scientific, educational, cultural and aesthetic purposes. There were no Recreation and Natural Heritage Trust Program acquisitions closed in September 2011.



Open Space Report to the Finance, Revenue and Bonding Committee and the State Bond Commission

October 2011

Overview

Section 22a-6v of the General Statutes of Connecticut requires the Commissioner of the Department of Energy & Environmental Protection to submit a report to the joint standing committee of the General Assembly having cognizance of matters relating to finance, revenue and bonding and to the State Bond Commission each month. The report provides information on the acquisition of land or interests in land by the state, a municipality, water company or nonprofit organization using funds authorized for the Open Space and Watershed Land Acquisition Program established under Sections 7-131d and the Recreation and Natural Heritage Trust Program established under Sections 23-73 to 23-79 of the Connecticut General Statutes.

Open Space and Watershed Land Acquisition Grant Program

The Open Space and Watershed Land Acquisition Grant Program provides grants to municipalities and private nonprofit land conservation organizations for the acquisition of open space land and to water companies to acquire land to be classified as Class I or Class II watershed land. The State of Connecticut receives a conservation and public access easement on property acquired to ensure that the property will be protected and available to residents of Connecticut as open space in perpetuity. The following grants were closed in October 2011. Additional information on these projects follows.

Sponsor	Project	Acres
Town of Canton	Cannon Property	155.3
City of Danbury	Westside Nature Park	188.724
Salem Land Trust	Wheaton Preserve	19.67
Town of Madison	Griswold Airport	20.6
Town of Simsbury	Tulmeadow Farm Forest	73.59

**Town of Canton – Cannon Open Space Preserve, Canton
Fee Acquisition**

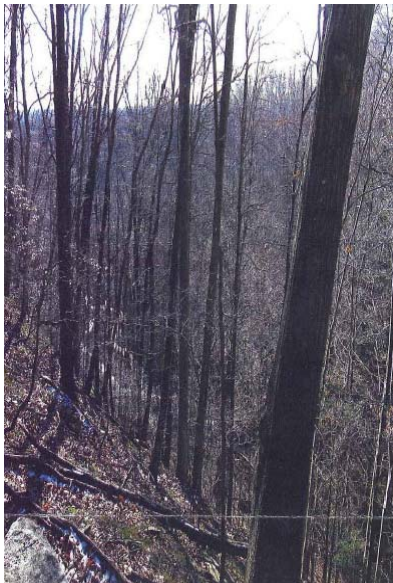


This acquisition protects surface water, wetlands and watercourses (tributaries for the Cherry Brook, a major contributor of the Farmington River). It is known to harbor numerous amphibians and reptiles and is a primary conservation area, within the “northwest Highlands Ecosystem” considered to be a primary core habitat for biodiversity.

**City of Danbury – Westside Nature Park, Danbury
Fee Acquisition**



This upland forest along I-84 contains four major ecosystems: Sanfords Pond (source of the Still River), the Still River, the swamps that bound the Still River and the upland forest that serves as a buffer. Sanfords Pond and this property fall within the Lake Kenosia Watershed (drinking water supply). The following uses will be evaluated by the Danbury Recreation Department for eligibility by individuals, groups, and the general public: hiking on designated trails, camping in designated areas, boating from designated launch sites and environmental education/research.



**Salem Land Trust – Wheaton Preserve, Salem
Fee Acquisition**

This parcel spans the deepest gorge in Salem, approx. 130 feet deep, through which Big Brook runs at the headwaters of the Eightmile River Watershed (recently designated as a Wild & Scenic River). This parcel lies within an intact 1,000+ acre large hemlock/hardwood forest block that is key to the protection of forest-interior birds, with upland and lowland mesic forest, ledges and caves.

Town of Madison – Griswold Airport, Madison Fee Acquisition



This is 17.4 acre portion of the 42 acre total acquisition, features frontage on the Hammonasset River. This is one of the most important salt marshes on Long Island Sound featuring a rare, intact coastal forest, native grasslands, estuarine, tidal wetlands and upland habitats. It directly connects to Hammonasset State Park and adds an additional buffer to this park.

Simsbury Land Trust – Tulmeadow Farm Forest (Woodlot), Simsbury Easement Acquisition



This is the 3rd and final phase/acquisition to protect the 260 acre Tulmeadow Farm. This “forest lot” produces a marketable timber harvest every 8-10 years. It is an integral link in a four mile walking trail from Ethel Walker to McLean along the ridge used by hikers, dog walkers, joggers, horseback riders, cross country skiers and nature viewers.

Recreation and Natural Heritage Trust Program

The Recreation and Natural Heritage Trust Program is the State of Connecticut's primary program for the acquisition of lands for the beneficial use and enjoyment of the public as additions to the State's system of parks, forests, wildlife, fisheries and natural resource management areas. The program acquires land that represents the ecological diversity of Connecticut, including natural features such as rivers, mountainous areas, coastal systems and their natural areas, in order to ensure the conservation of such land for recreational, scientific, educational, cultural and aesthetic purposes. The following acquisition was closed in October 2011. Additional information on this project follows.

Property Name	Location	Cooperator	Match Share	Fee Acreage	Easement Restrictions or R.O.W.	State Purchase Price	Purpose of Acquisition
Valsecchi	Sharon	-	-	25.03	-	\$100,000.00	Add to Housatonic State Forest

Valsecchi Property, Sharon Fee Purchase

The Valsecchi property is a 25.03 acre parcel located off of Clay Beds Road, within the Housatonic State Forest. The parcel is mostly wooded with several smaller open fields. The property was acquired utilizing funds made available through the Recreation and Natural Heritage Trust Program. The acquisition of this property alleviates boundary issues and helps prevent development within the forest.





Connecticut Department of

**ENERGY &
ENVIRONMENTAL
PROTECTION**

**Open Space Report to the Finance, Revenue and Bonding Committee and the
State Bond Commission**

November 2011

Overview

Section 22a-6v of the General Statutes of Connecticut requires the Commissioner of the Department of Energy & Environmental Protection to submit a report to the joint standing committee of the General Assembly having cognizance of matters relating to finance, revenue and bonding and to the State Bond Commission each month. The report provides information on the acquisition of land or interests in land by the state, a municipality, water company or nonprofit organization using funds authorized for the Open Space and Watershed Land Acquisition Program established under Sections 7-131d and the Recreation and Natural Heritage Trust Program established under Sections 23-73 to 23-79 of the Connecticut General Statutes.

Open Space and Watershed Land Acquisition Grant Program

The Open Space and Watershed Land Acquisition Grant Program provides grants to municipalities and private nonprofit land conservation organizations for the acquisition of open space land and to water companies to acquire land to be classified as Class I or Class II watershed land. The State of Connecticut receives a conservation and public access easement on property acquired to ensure that the property will be protected and available to residents of Connecticut as open space in perpetuity. The following grant was closed in November 2011. Additional information on this project follows.

Sponsor	Project	Acres
Town of Hebron	Kinney Road Open Space	17.6

**Town of Hebron – Kinney Road Open Space
Fee Acquisition**



This parcel is a vital component to an extended greenway which will eventually link the State Air Line Trail to the Town Center. This parcel consists of agricultural fields with prime farmland soils and is adjacent to the Town-owned Johnson farm. An unnamed watercourse, crossing through the site, is a major tributary to Raymond Brook (approx. 2500' southeast of this parcel) and the Raymond Brook Marsh, a wetland of statewide special concern. 13+/- acres is open cornfield and 4.5 acres is forested with wetlands.

Recreation and Natural Heritage Trust Program

The Recreation and Natural Heritage Trust Program is the State of Connecticut’s primary program for the acquisition of lands for the beneficial use and enjoyment of the public as additions to the State’s system of parks, forests, wildlife, fisheries and natural resource management areas. The program acquires land that represents the ecological diversity of Connecticut, including natural features such as rivers, mountainous areas, coastal systems and their natural areas, in order to ensure the conservation of such land for recreational, scientific, educational, cultural and aesthetic purposes. The following acquisitions were closed in November 2011. Additional information on these projects follows.

Property Name	Location	Cooperator	Match Share	Fee Acreage	Easement Restrictions or R.O.W.	State Purchase Price	Purpose of Acquisition
Mason Property	Vernon	-	-	454.3	-	\$2,965,000	Add. to Belding Wildlife Mgmt. Area
Beverly’s Marina Property	Morris	-	-	2.82	-	\$1,990,000	Bantam Lake Water Access

**Mason Property, Vernon
Fee Purchase**



The Mason Property is adjacent to and upstream of the Belding Wildlife Management Area (BWMA), protecting Connecticut's first Wild Trout Management Area, created in 1994. This acquisition expands upon a greenway which includes the BWMA, Valley Falls Park and Bolton Notch State Park to the south and the Town-owned Walker Reservoir and Walker Recreational Park to the north. The Tankerhoosen River, which flows through the property, is home to wild brook trout, brown trout, freshwater mussels and pollution intolerant invertebrates. There are at least 64 Greatest Conservation Need species, species of Special Concern and numerous habitats of Greatest Conservation Need. The property is mostly wooded with meadows, walking trails throughout and includes the Walker Reservoir Dam.

**Beverly's Marina Property, Morris
Fee Purchase**



The DEEP has purchased the Beverly's Marina property which consists of 2.82 acres, 558' of lake frontage and a 9,172 square foot structure. It also includes a ramp for launching boats, boat slips and parking. DEEP purchased the property from the current owner, Bantam Lake Properties LLC.

The purchase enables DEEP to accomplish multiple objectives on this designated Heritage Lake:

- to secure modest public access to the state's largest natural lake;
- provide an opportunity for an enhanced Environmental Conservation police presence;
- provide environmental education opportunities about the lake's ecology; and
- work closely with other stakeholders in managing the lake's natural and recreational resources.



Open Space Report to the Finance, Revenue and Bonding Committee and the State Bond Commission

December 2011

Overview

Section 22a-6v of the General Statutes of Connecticut requires the Commissioner of the Department of Energy & Environmental Protection to submit a report to the joint standing committee of the General Assembly having cognizance of matters relating to finance, revenue and bonding and to the State Bond Commission each month. The report provides information on the acquisition of land or interests in land by the state, a municipality, water company or nonprofit organization using funds authorized for the Open Space and Watershed Land Acquisition Program established under Sections 7-131d and the Recreation and Natural Heritage Trust Program established under Sections 23-73 to 23-79 of the Connecticut General Statutes.

Open Space and Watershed Land Acquisition Grant Program

The Open Space and Watershed Land Acquisition Grant Program provides grants to municipalities and private nonprofit land conservation organizations for the acquisition of open space land and to water companies to acquire land to be classified as Class I or Class II watershed land. The State of Connecticut receives a conservation and public access easement on property acquired to ensure that the property will be protected and available to residents of Connecticut as open space in perpetuity. The following grants were closed in December 2011. Additional information on these projects follows.

Sponsor	Project	Acres
Town of Oxford	VonWettberg Property	66.2133
Town of Glastonbury	Tiboni Property	54.34

**Town of Oxford – VonWettberg Property
Fee Acquisition**



This mostly forested property contains a pond, a 13.6-acre aquifer, hiking trails and an unnamed brook which feeds into the Housatonic River. It is part of a 1,000-acre contiguous open space corridor in Oxford and Seymour. The property will provide hiking, cross country skiing, bird watching, horseback riding and fishing opportunities.

**Town of Glastonbury – Tiboni Property
Fee Acquisition**



This property abuts the Meshomasic State Forest in two locations and serves as a connector. It protects a large undeveloped, forested area which is a prime natural habitat for the timber rattlesnake. The Shenipsit Trail and Dark Hollow Brook run through the property.

Recreation and Natural Heritage Trust Program

The Recreation and Natural Heritage Trust Program is the State of Connecticut’s primary program for the acquisition of lands for the beneficial use and enjoyment of the public as additions to the State’s system of parks, forests, wildlife, fisheries and natural resource management areas. The program acquires land that represents the ecological diversity of Connecticut, including natural features such as rivers, mountainous areas, coastal systems and their natural areas, in order to ensure the conservation of such land for recreational, scientific, educational, cultural and aesthetic purposes. The following acquisition was closed in December 2011. Additional information on this project follows.

Property Name	Location	Cooperator	Match Share	Fee Acreage	Easement Restrictions or R.O.W.	State Purchase Price	Purpose of Acquisition
Matson	Stonington	EPA	100%	5.75	--	\$250,000.00	Addition to Barn Island WMA

Matson Property, Stonington
Fee Purchase

The DEEP has purchased the Matson property in Stonington which consists of 5.75 acres and a small older residential structure that will soon be demolished with the help of the Town. Located along Palmer Neck Road, the property will be incorporated into the Barn Island Wildlife Management Area. The acquisition will expand the grassland habitat in the area, and will provide a potential pathway for saltwater migration at a restoring marsh. The acquisition was made available through a Federal EPA Long Island Sound Study grant.

