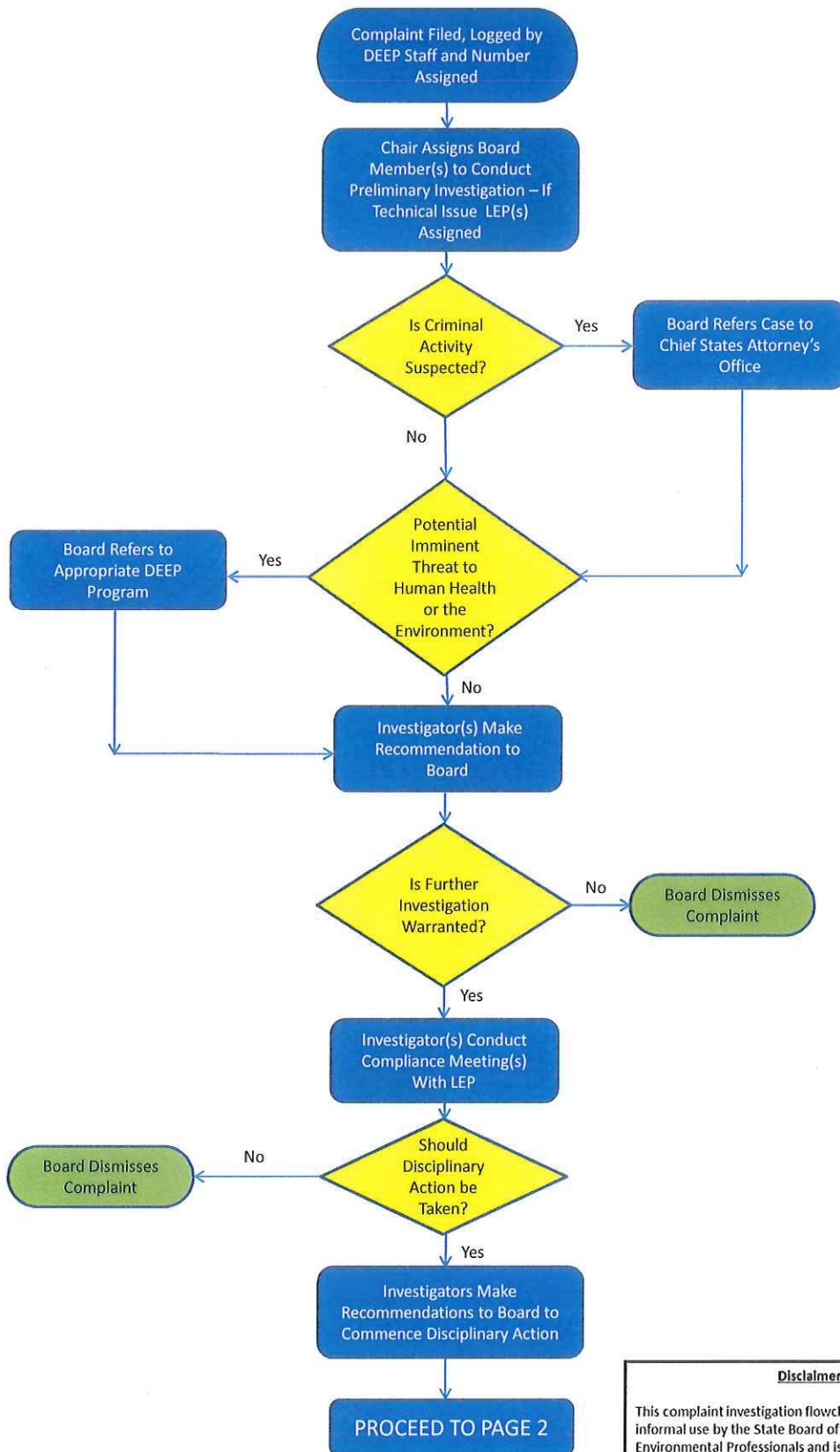


This flow chart contains the process by which the State Board of Examiners of Environmental Professionals (more commonly known as the Licensed Environmental Professional or “LEP Board”) conducts investigations on complaints regarding licensed environmental professionals (“LEP”) within the State of Connecticut. This document was prepared by the LEP Board and is provided for the convenience of the reader. This is not the official version of the regulations that govern the use of an LEP’s license or a formal summary of the hearing process. It is not intended to be a substitute for the uniform Administrative Procedure Act (“UAPA”) or the LEP Regulations. The official regulations are published by the State of Connecticut, Judicial Branch, Commission on Official Legal Publications in the Connecticut Law Journal. In the event there is inconsistency between what this document outlines and the regulations as published in the Connecticut Law Journal, the Connecticut Law Journal publication will serve as the official version.

Should you have any questions, please contact Kim Maiorano, LEP Board Administrator at (860) 424-3788 or email Kim.Maiorano@ct.gov. You may also email the Board directly at CT.LEPBoard@ct.gov.

Board of Examiners of Licensed Environmental Professionals
Complaint Investigation Process
 November 2013 (rev. 12/16)

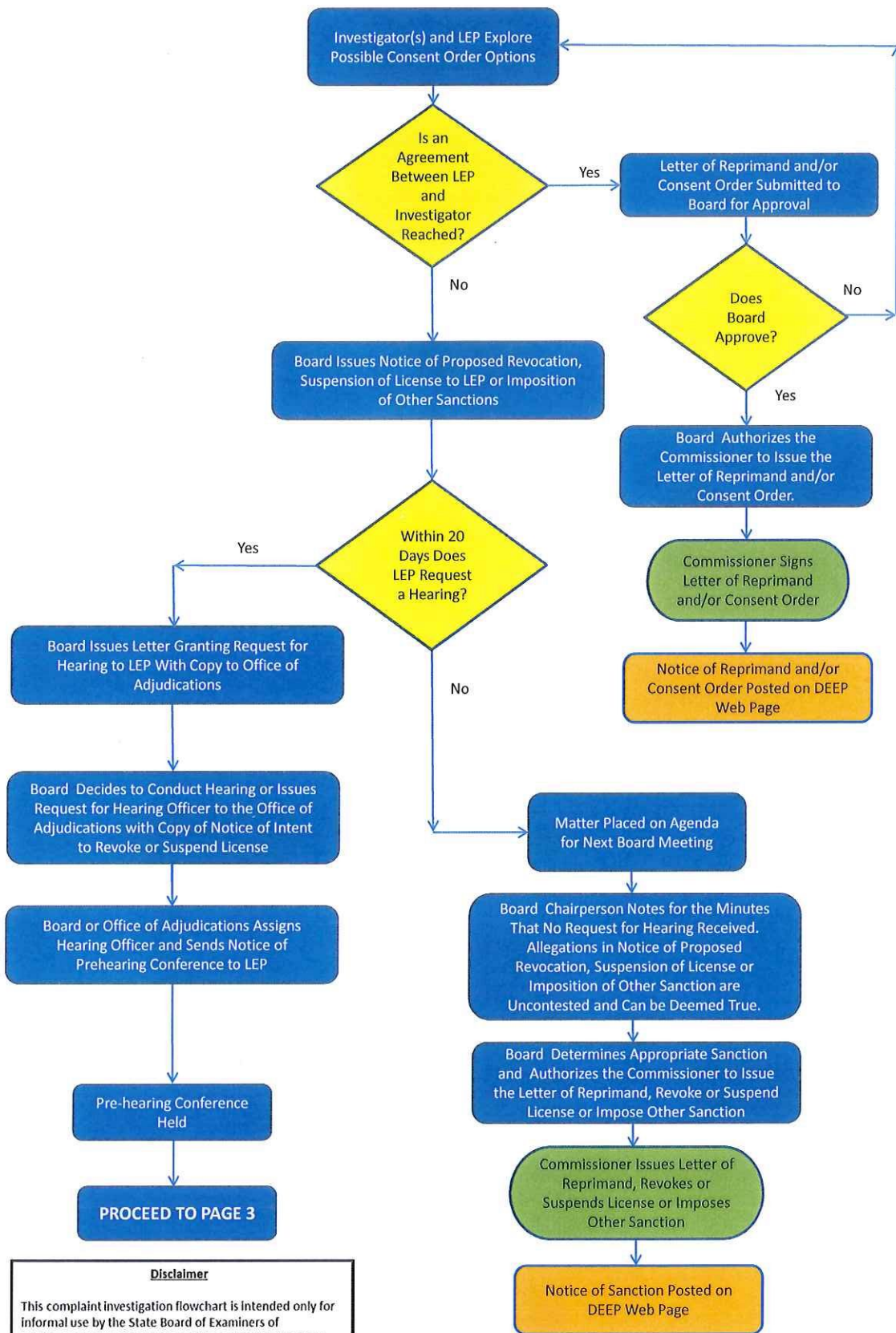


Disclaimer

This complaint investigation flowchart is intended only for informal use by the State Board of Examiners of Environmental Professionals and is provided to licensed environmental professionals (LEPs) for informational purposes only. It is not intended to be used as a substitute for the Uniform Administrative Procedures Act or the Department of Energy and Environmental Protection's regulations concerning the State Board of Examiners of Environmental Professionals.

Board of Examiners of Licensed Environmental Professionals Complaint Investigation Process

November 2013 (Rev. 12/16)

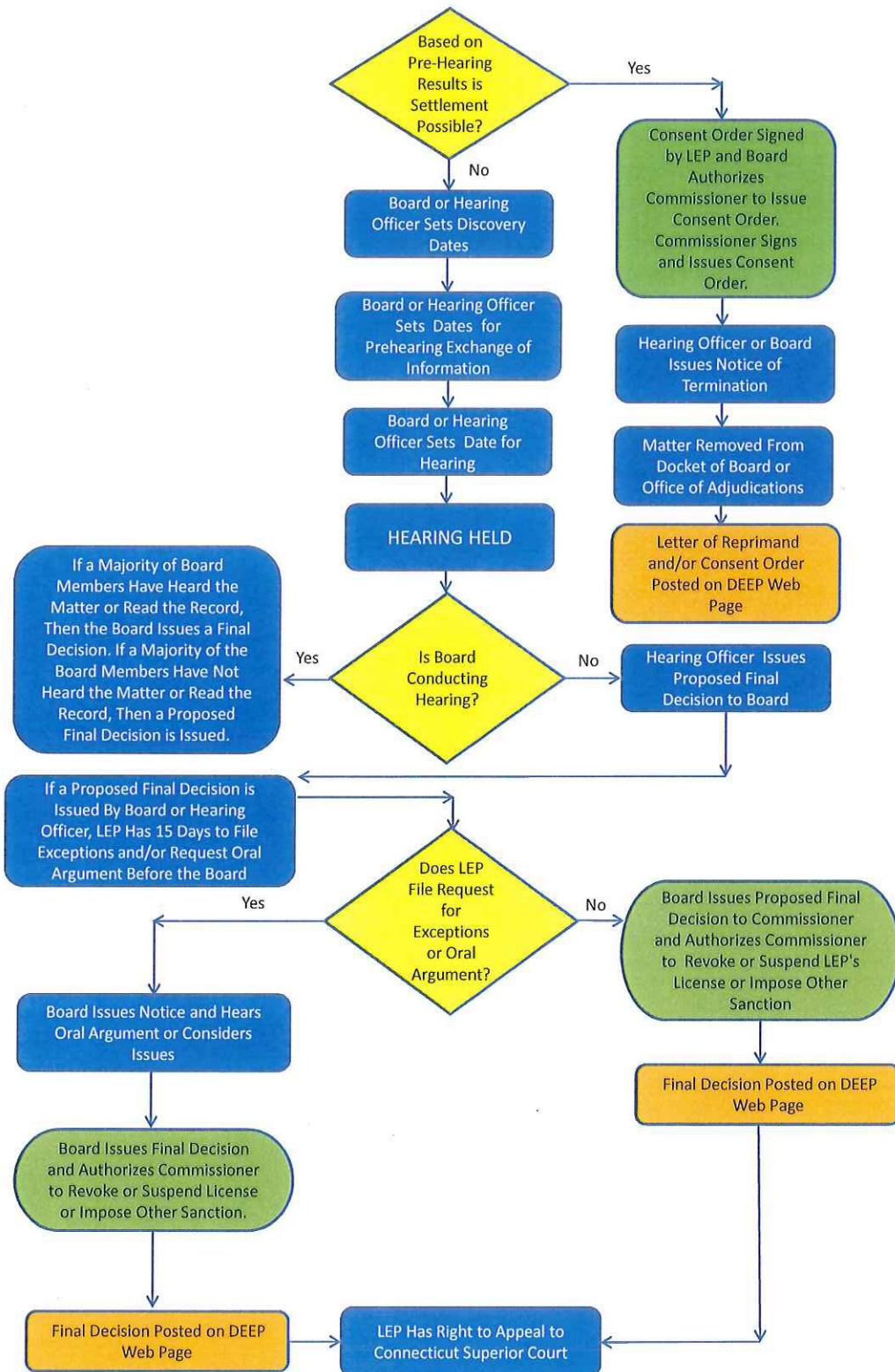


Disclaimer

This complaint investigation flowchart is intended only for informal use by the State Board of Examiners of Environmental Professionals and is provided to licensed environmental professionals (LEPs) for informational purposes only. It is not intended to be used as a substitute for the Uniform Administrative Procedures Act or the Department of Energy and Environmental Protection's regulations concerning the State Board of Examiners of Environmental Professionals.

Board of Examiners of Licensed Environmental Professionals Complaint Investigation Process

November 2013 (Rev. 12/16)



Disclaimer

This complaint investigation flowchart is intended only for informal use by the State Board of Examiners of Environmental Professionals and is provided to licensed environmental professionals (LEPs) for informational purposes only. It is not intended to be used as a substitute for the Uniform Administrative Procedures Act or the Department of Energy and Environmental Protection's regulations concerning the State Board of Examiners of Environmental Professionals.