

MIRA CSWS WtE Facility

Outage Update

- PBF Status
- Diversions
- WPF Inventory
- Tip Fee Impact

PBF Status

- Unit 5 Arrived 1/17/2019
- Reinstall/Prep work ongoing
- Begin restart 1/26/2019
- If success, process 1,400 TPD through two boilers
- Stop diversions soon after

PBF Status

- Unit 6 steam turbine and generator rotors scheduled for mid-February return
- Preliminary schedule for operation Feb 28
- Once on-line, three boiler operation
- 2,100 TPD processing
- Inventory reduction
- Return of non-municipal customers

Diversions

- Unit 6 outage 11/5/18
 - No boiler availability
 - MIRA shuts off all non-municipal customers
 - MSW receipts reduced from 12,000TPW to 8,000TPW
 - MIRA seeks diversion outlets
 - Dozens of contacts made
 - Diversion average 6,000TPW
 - More diversion in recent weeks
 - Diversion costs (T&D) very steep

Diversions

- Issues

-Limited Transportation

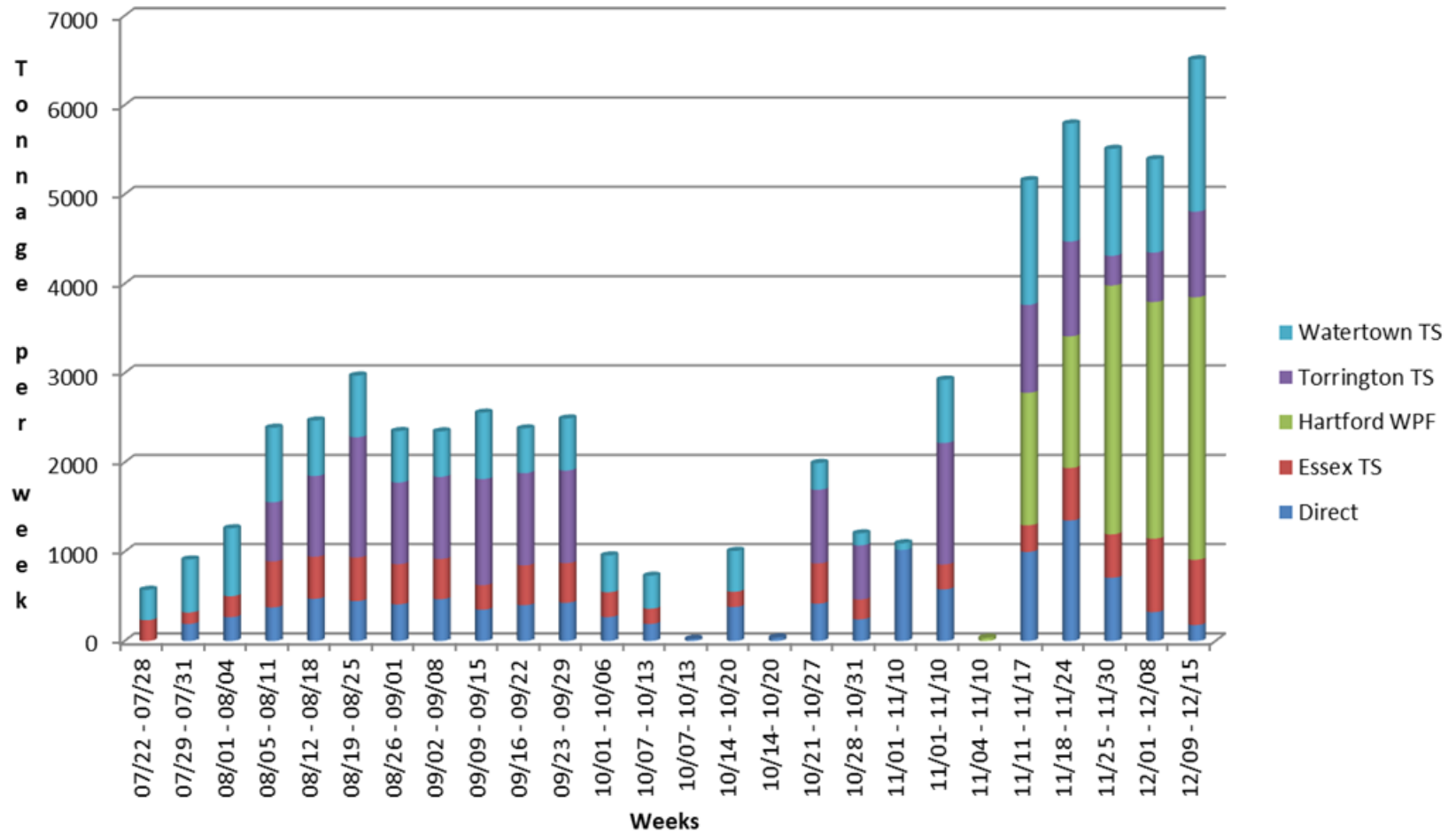
- Truck/Trailer/Driver Shortages
- Limited rail cars suitable for MSW
- Limited capability for rail facilities to containerize waste in accordance with railroad requirements

-Limited Disposal

- No In-State MSW landfill capacity
- In-State WtE close to capacity
- MA Chicopee/Southbridge at capacity
- Landfill capacity only at great distance

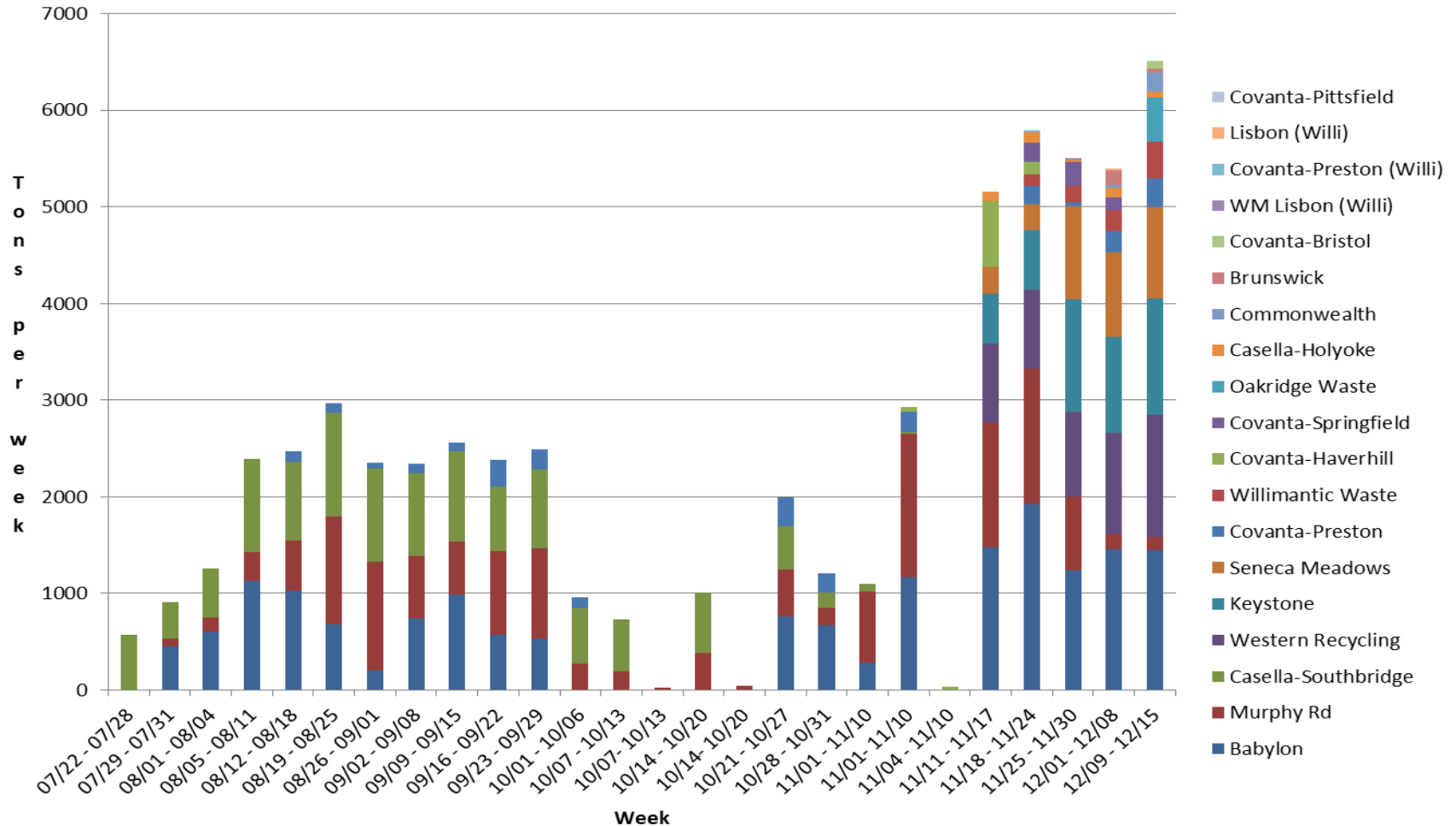
Diversions

Diversions and Exports YTD FY 2019



Diversions

Diversion Destinations FY 2019 through Dec 15



Diversions

-MIRA Efforts

- Constant and continuous contact with MSW Transport, Transfer, Disposal, MSW Brokerage companies locally and throughout New England

- MIRA has utilized:

- At least 17 different Transfer Stations and Disposal Facilities

- At least 37 different transportation companies

- MIRA has been unable to utilize, due mainly to transportation or capacity limitations:

- At least 11 Transfer Stations

- 7 WtE Facilities

- At least 13 Landfills

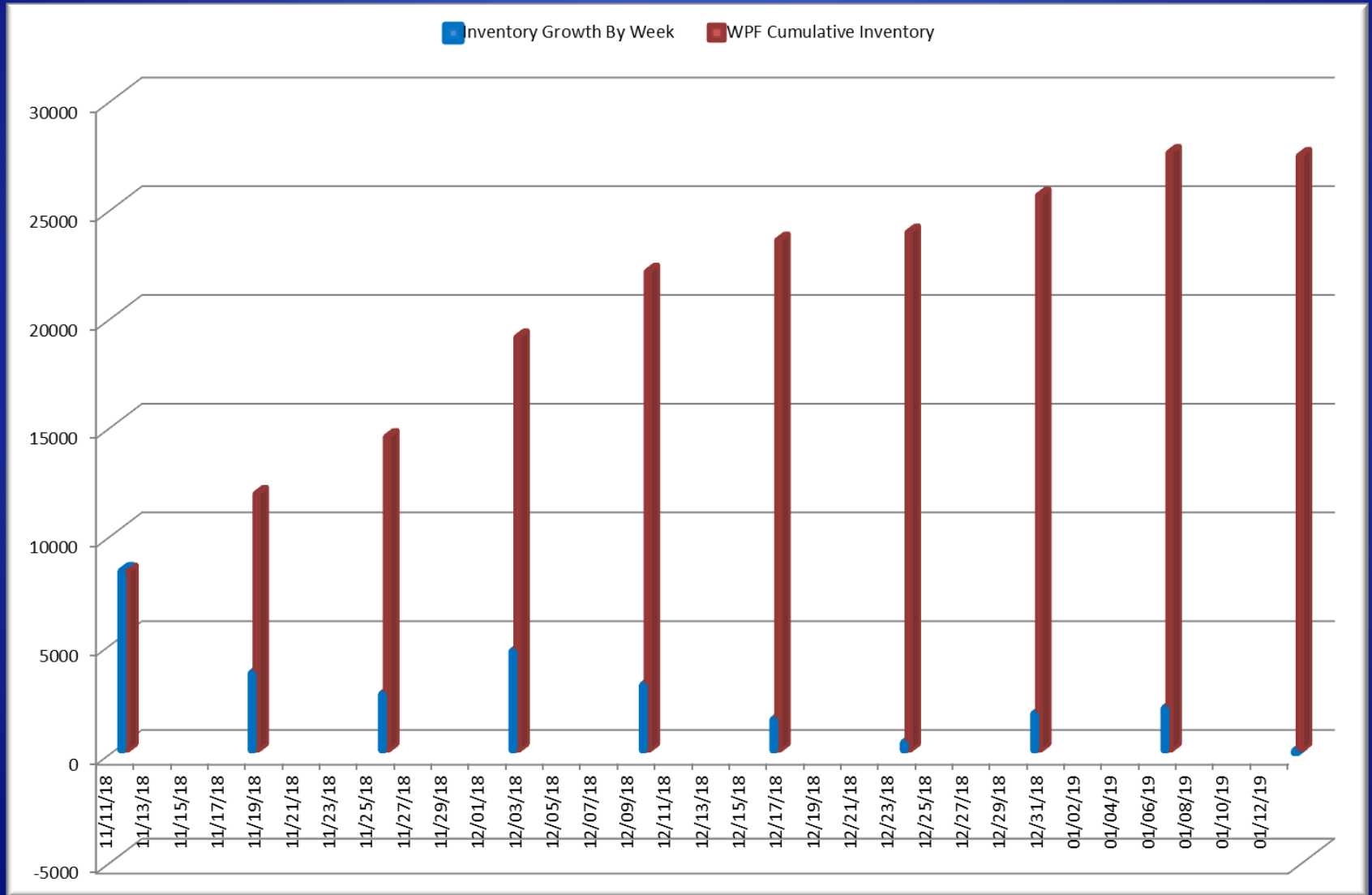
- Several Rail Facilities

- Note: DEEP relaxation of permit conditions and emergency authorizations had minimal effect due to transportation limitations

WPF Inventory

- Despite diversion efforts, average weekly growth: 2,000 tons
- MIRA processing MSW to RDF to reduce fire risk, densify, remove metals, and store more tons in building
 - RDF higher compacted density
 - Ferrous removal (3% by weight)
 - No RDF or MSW currently being stored outside of building

WPF Inventory



Tip Fee Impact

- MIRA Notified Customers of Possible Increase
- MIRA Board of Directors to consider on 1/23/19
 - Possible increase effective March 1, 2019
 - Not to exceed \$85/ton Tier 1 Long Term
 - May be possible to defer increase to July 1, 2019
 - Decision will consider:
 - Anticipated insurance claim timing and amount
 - Return to service of TG5 and TG6
 - Cash and Reserves position of MIRA