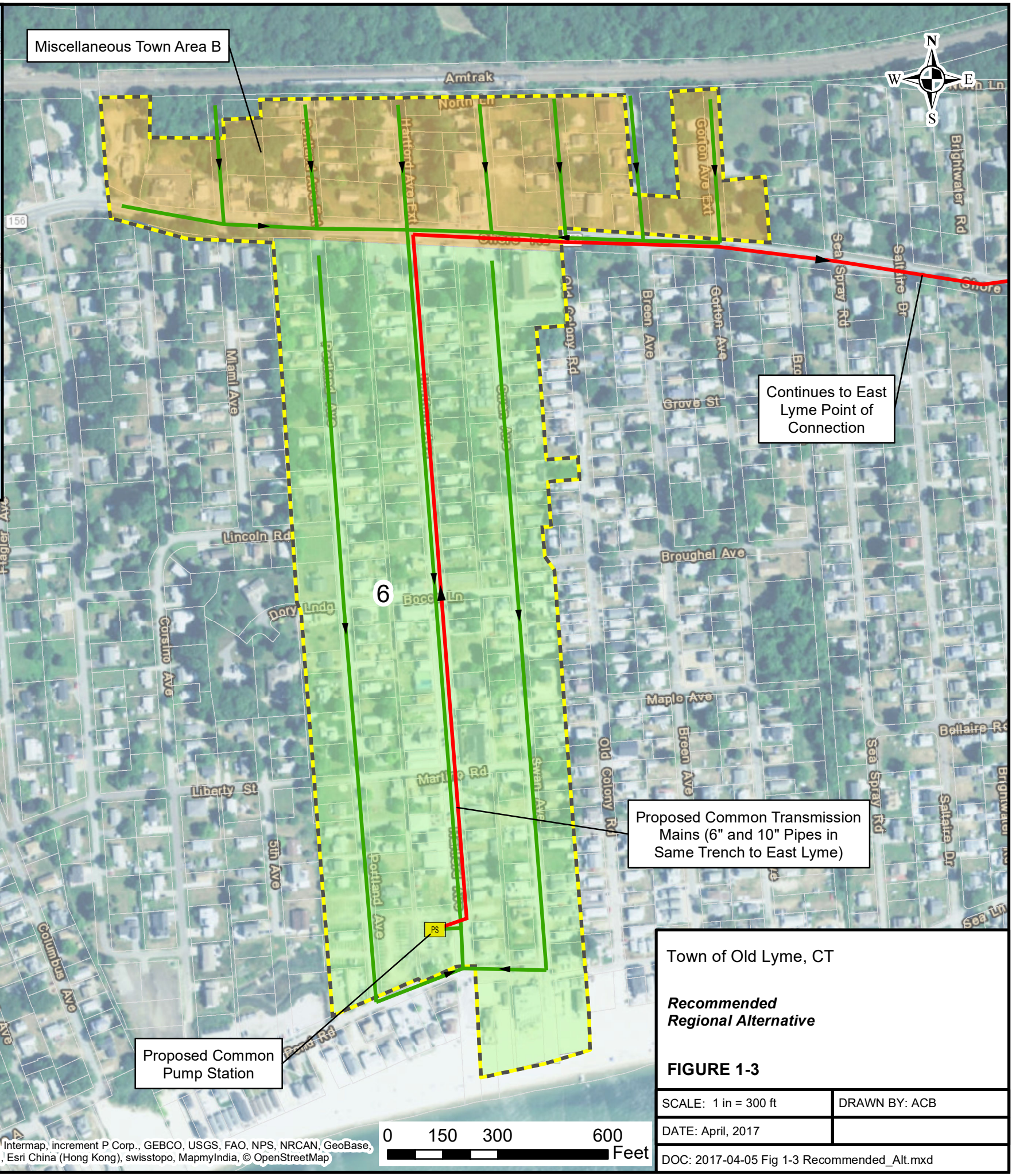


Notes: 1. Location of Proposed Pump Station is not final and may change during the design phase of the project.  
 2. Source: Adapted from Woodard & Curran, Town of Old Lyme, Coastal Wastewater Management Plan Report, April 2017



**Legend**

- PS Pump Station
- Transmission Main
- Gravity Sewer Pipes
- Sewer Service Area
- Parcels

**Sub-Areas**

- 6 - Sound View Beach
- Miscellaneous Town Area B

Town of Old Lyme, CT

*Recommended Regional Alternative*

**FIGURE 1-3**

SCALE: 1 in = 300 ft	DRAWN BY: ACB
DATE: April, 2017	
DOC: 2017-04-05 Fig 1-3 Recommended_Alt.mxd	

Service Layer Credits: Sources: Esri, HERE, DeLorme, Intermap, increment P Corp., GEBCO, USGS, FAO, NPS, NRCAN, GeoBase, IGN, Kadaster NL, Ordnance Survey, Esri Japan, METI, Esri China (Hong Kong), swisstopo, MapmyIndia, © OpenStreetMap