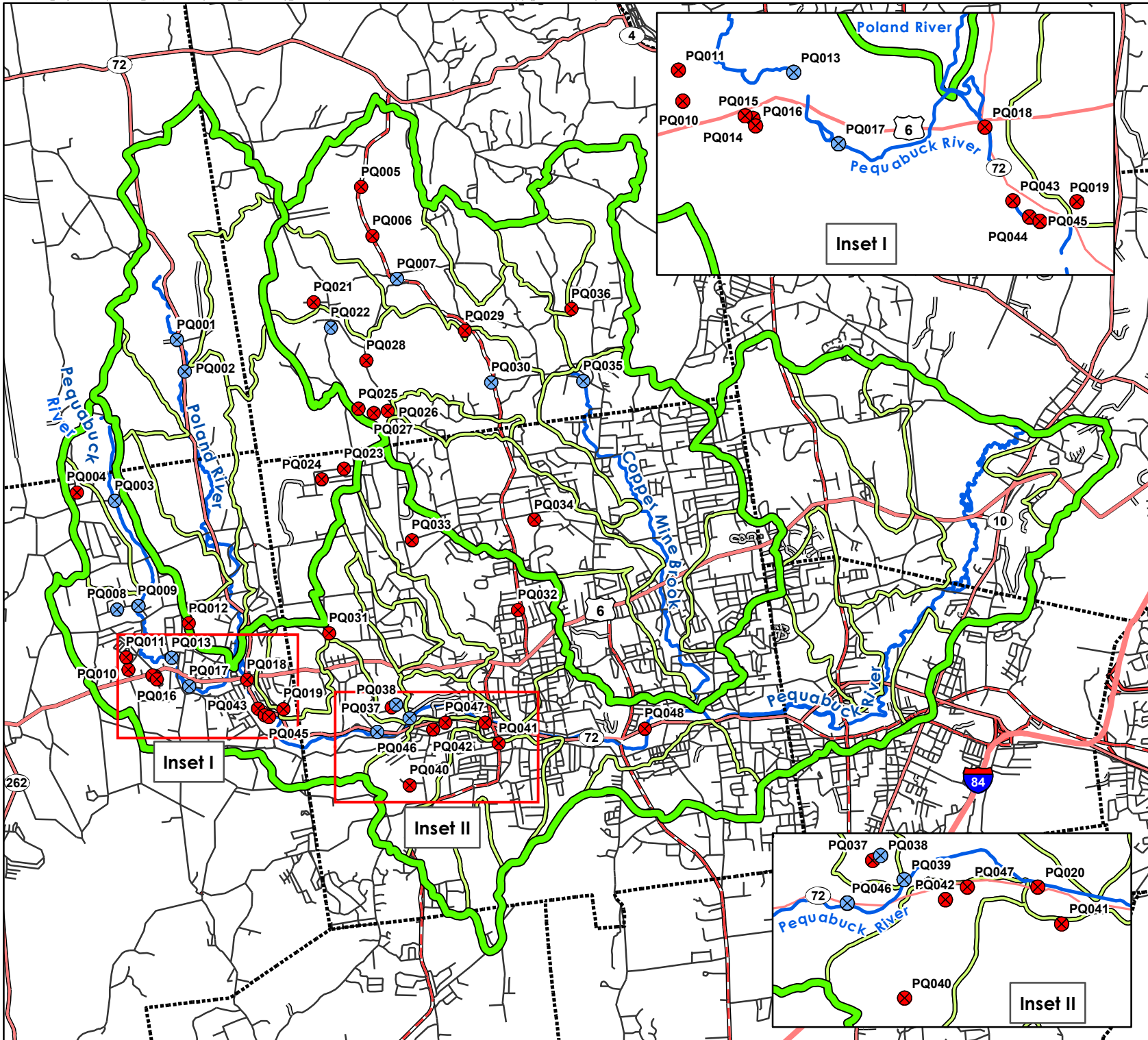


Appendix A – Station Locations

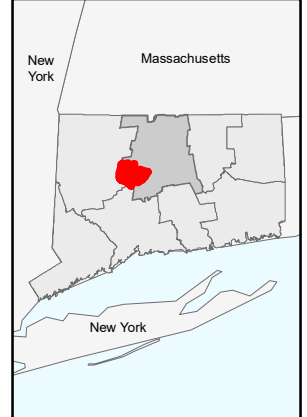


Table A1 – Water Quality Sampling Stations by Organization

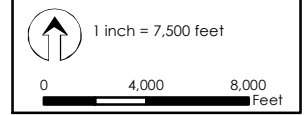
Station	Organization	Purpose
PR11	CT DEEP	Water Quality Assessment
PeR100	Connecticut River Watch	Water Quality Assessment
PoR010	Connecticut River Watch	Water Quality Assessment
PeR090 (DEEP PR3)	PeR090: Connecticut River Watch; DEEP PR3: CT DEEP	Water Quality Assessment
PeR080 (DEEP PR4)	PeR080: Connecticut River Watch; DEEP PR4: CT DEEP	Water Quality Assessment
CTS06621-0445	CT DEEP	Water Quality Assessment
PeR070	Connecticut River Watch	Water Quality Assessment
BR2	City of Bristol	Multi-Sector General Permit (MS4)
PeR060 (DEEP PR5)	PeR060: Connecticut River Watch; DEEP PR5: CT DEEP	Water Quality Assessment
1	CT DEEP	Water Quality Assessment
2	CT DEEP	Water Quality Assessment
PeR050	Connecticut River Watch	Water Quality Assessment
6A, 20213	CT DEEP	Water Quality Assessment
No Name	CT DEEP	Water Quality Assessment
BO	CT DEEP	Water Quality Assessment
PeR040 (DEEP PR6)	PeR040: Connecticut River Watch; DEEP PR6: CT DEEP	Water Quality Assessment
CTS06621-0371	CT DEEP	Water Quality Assessment
BR6	City of Bristol	Multi-Sector General Permit (MS4)
BR5	City of Bristol	Multi-Sector General Permit (MS4)
BR4	City of Bristol	Multi-Sector General Permit (MS4)
BR3	City of Bristol	Multi-Sector General Permit (MS4)
CMB010 (DEEP 187)	CMB010: Connecticut River Watch; DEEP 187: CT DEEP	Water Quality Assessment
PeR030 (DEEP PR7)	PeR030: Connecticut River Watch; DEEP PR7: CT DEEP	Water Quality Assessment
PeR020 (DEEP PR8)	PeR020: Connecticut River Watch; DEEP PR8: CT DEEP	Water Quality Assessment
PeR010 (DEEP PR10) (27-s1)	PeR010: Connecticut River Watch; DEEP PR10: CT DEEP	Water Quality Assessment
PR9	CT DEEP	Water Quality Assessment
PR-meadow	CT DEEP	Water Quality Assessment
BR1	City of Bristol	Multi-Sector General Permit (MS4)
3	CT DEEP	Water Quality Assessment



CONNECTICUT COUNTY MAP



pH PRINCETON HYDRO, LLC.
 1108 OLD YORK ROAD
 P.O. BOX 720
 RINGOES, NJ 08551
 *with offices in NJ, PA and CT



NOTES:

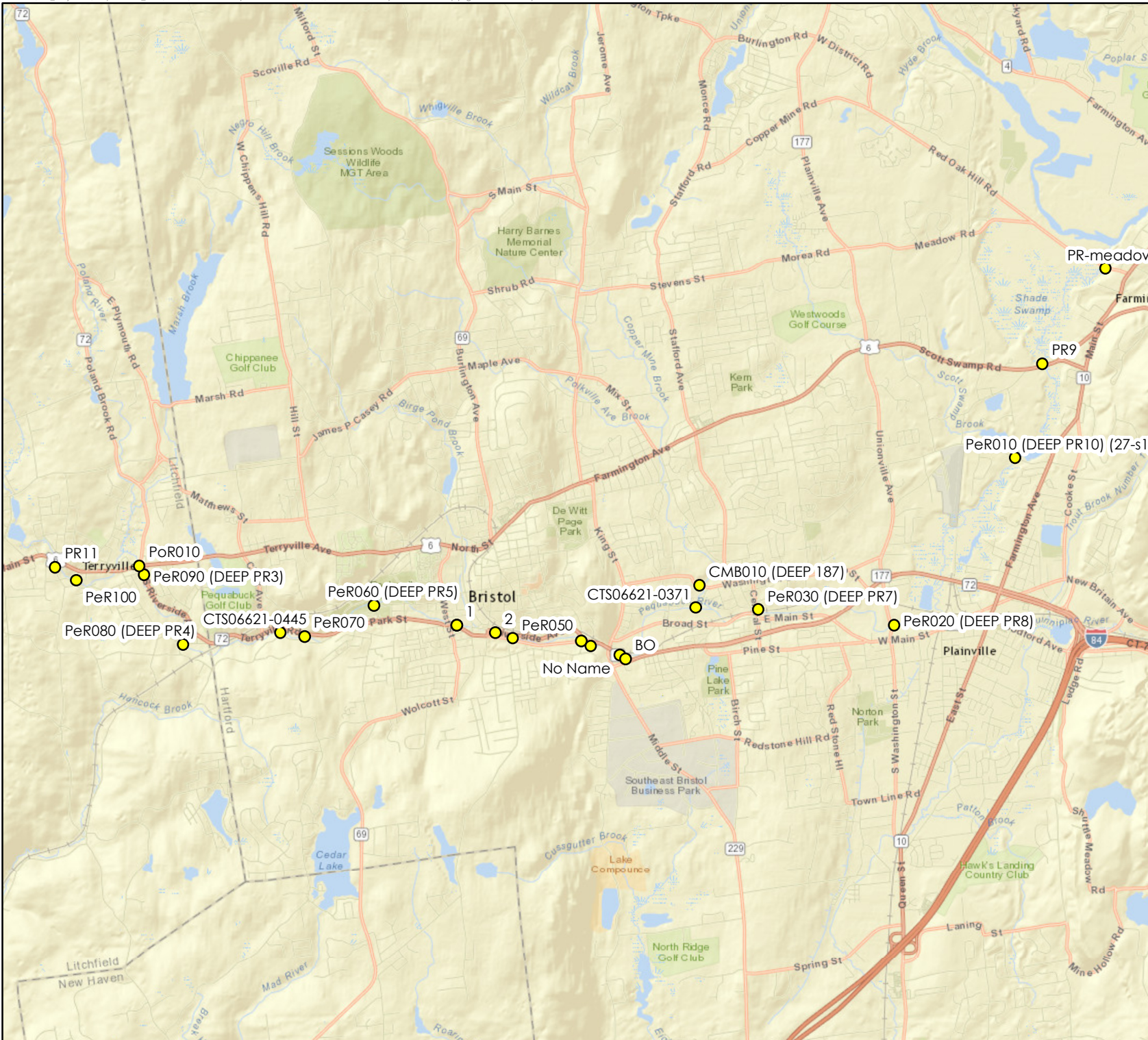
1. GPS coordinates obtained in the field using a Garmin Oregon 650t handheld GPS. Average horizontal error approximately 11 feet.
2. Town lines, subregional watershed boundaries, and local basin boundaries obtained from CT DEEP.
3. TIGER roads obtained from the US Census Bureau.

Map Projection:
 NAD 1983 StatePlane Connecticut FIPS 0600 Feet

FIELD ASSESSMENT WAYPOINTS

PEQUABUCK RIVER WATERSHED
 BASED PLAN
 HARTFORD COUNTY,
 CONNECTICUT

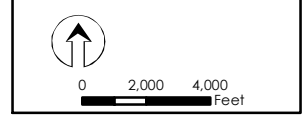
- Legend**
- Stream Assessment
 - Other Waypoint
 - Subregional Basin
 - Local Basin
 - Town Boundary
 - Stream



CONNECTICUT COUNTY MAP



pH PRINCETON HYDRO, LLC.
 1108 OLD YORK ROAD
 P.O. BOX 720
 RINGOES, NJ 08551
 *with offices in NJ, PA and CT



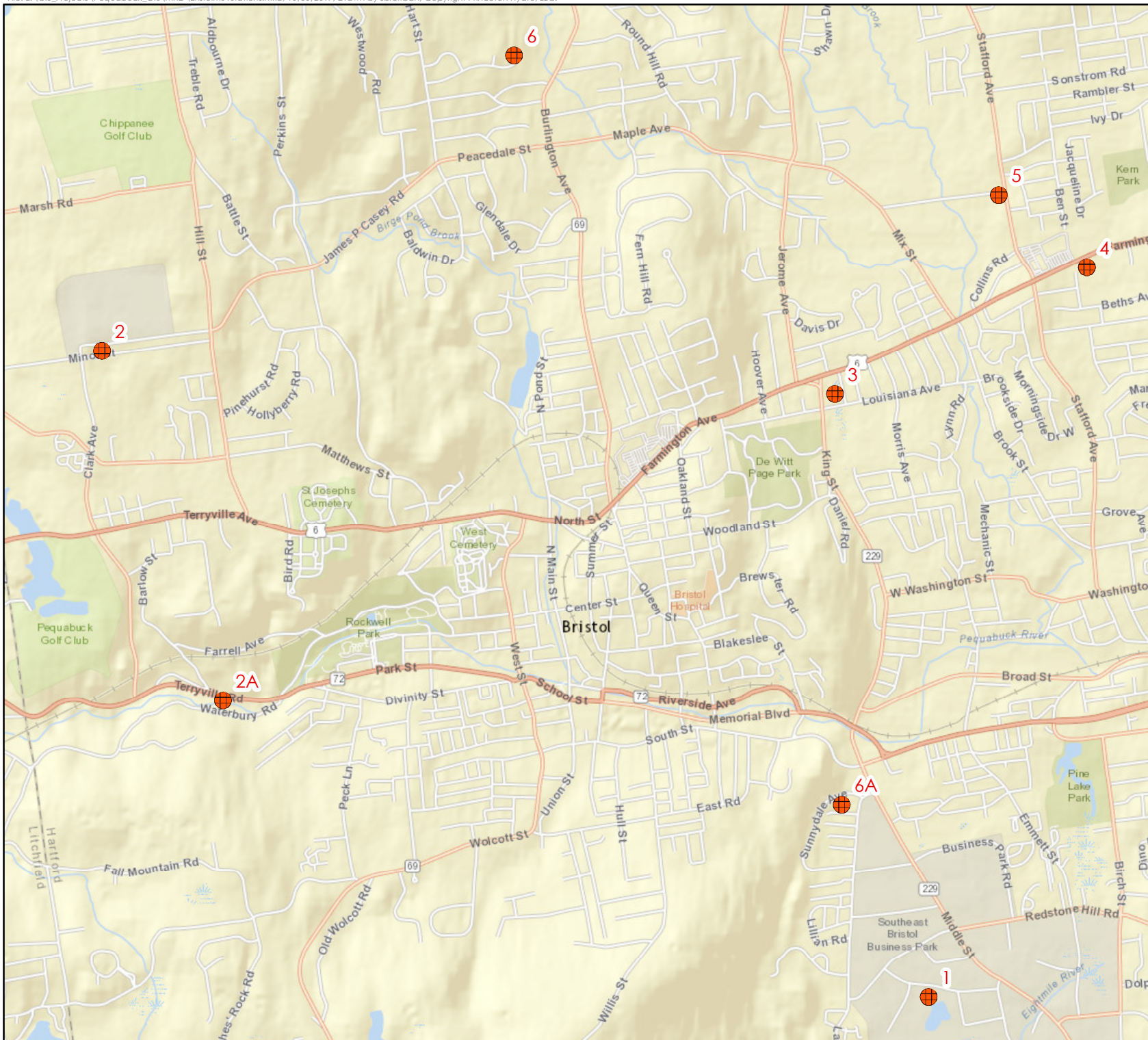
NOTES:
 1. Data Source: CT DEEP.
 2. Basemap Sources: Esri, HERE, DeLorme, USGS, Intermap, increment P Corp., NRCAN, Esri Japan, METI, Esri China (Hong Kong), Esri (Thailand), MapmyIndia, © OpenStreetMap contributors, and the GIS User Community

Map Projection:
 NAD 1983 StatePlane Connecticut FIPS 0600 Feet

WATER QUALITY STATIONS

PEQUABUCK RIVER WATERSHED
 BASED PLAN
 HARTFORD COUNTY, CONNECTICUT

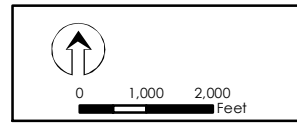
Legend
 Water Quality Station



CONNECTICUT COUNTY MAP



pH PRINCETON HYDRO, LLC.
 1108 OLD YORK ROAD
 P.O. BOX 720
 RINGOES, NJ 08551
 *with offices in NJ, PA and CT



NOTES:
 1. Data Source: Town of Bristol.
 2. Basemap Sources: Esri, HERE, DeLorme, USGS, Intermap, increment P Corp., NRCAN, Esri Japan, METI, Esri China (Hong Kong), Esri (Thailand), MapmyIndia, © OpenStreetMap contributors, and the GIS User Community

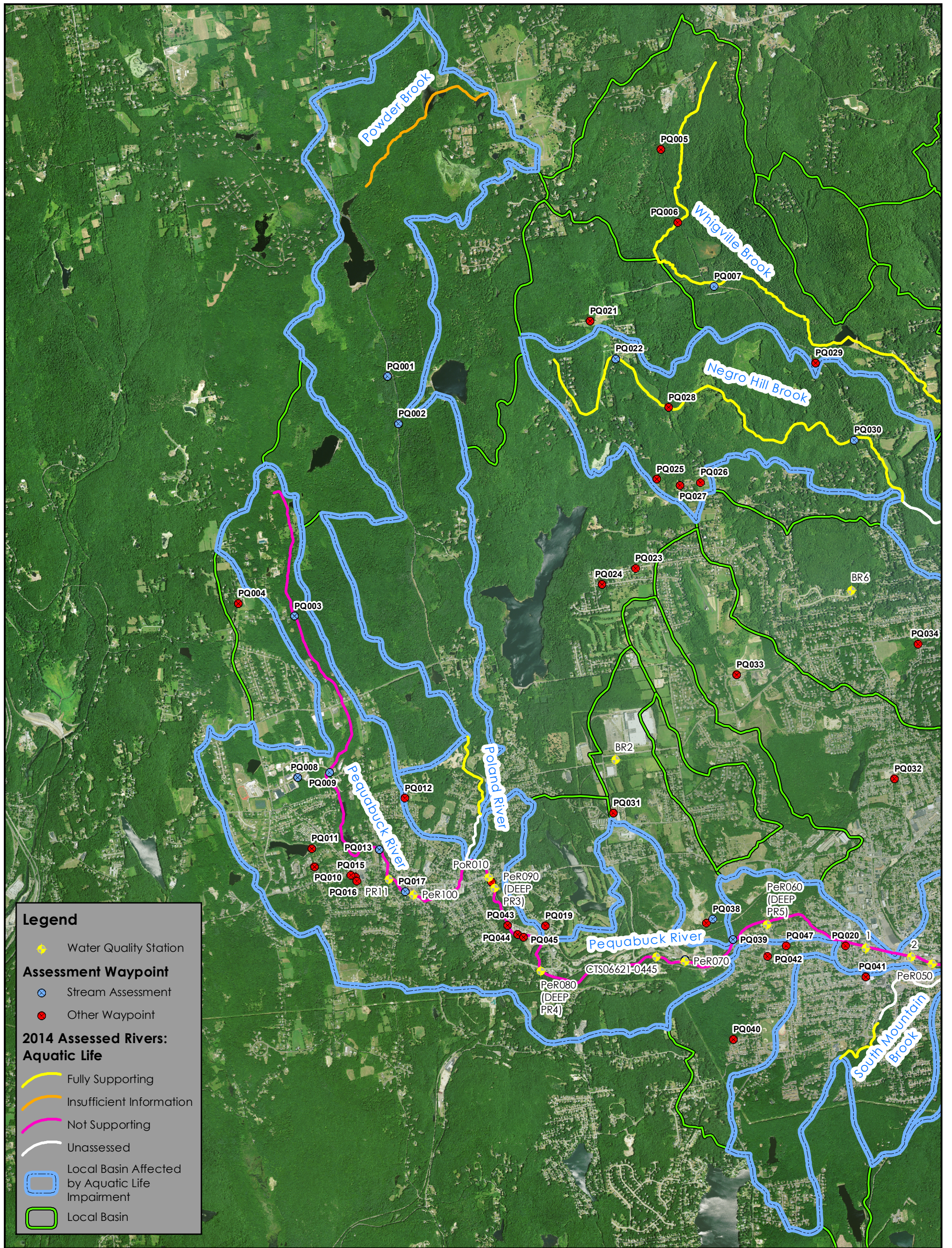
Map Projection:
 NAD 1983 StatePlane Connecticut FIPS 0600 Feet

BRISTOL MS4 MONITORING STATIONS

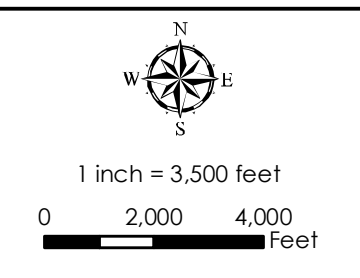
PEQUABUCK RIVER WATERSHED
 BASED PLAN
 HARTFORD COUNTY, CONNECTICUT

Legend

Monitoring Station



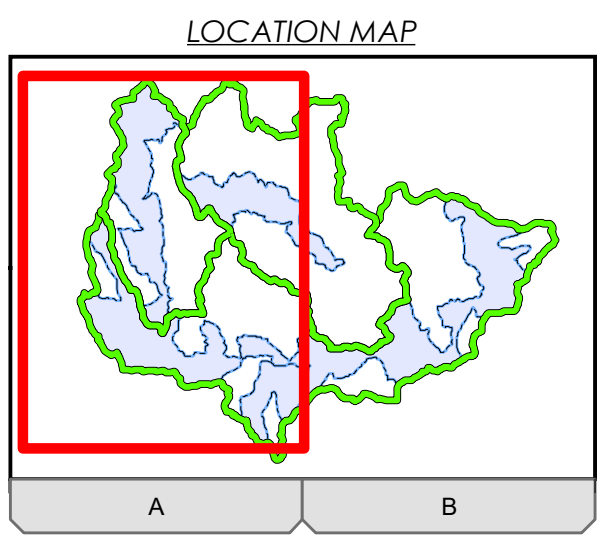
PART A: LOCAL BASINS WITH AQUATIC LIFE IMPAIRMENT
 PEQUABUCK RIVER WATERSHED
 BASED PLAN
 HARTFORD COUNTY, CONNECTICUT



pH PRINCETON HYDRO, LLC.
 1108 OLD YORK ROAD
 P.O. BOX 720
 RINGOES, NJ 08551
 *with offices in NJ, PA and CT

NOTES:
 1. Local basin boundaries and 2014 assessed rivers obtained from CT DEEP.
 2. Water quality stations obtained from the Town of Bristol.
 3. 2016 orthophotography obtained from NAIP.

Map Projection:
 NAD 1983 StatePlane Connecticut FIPS 0600 Feet



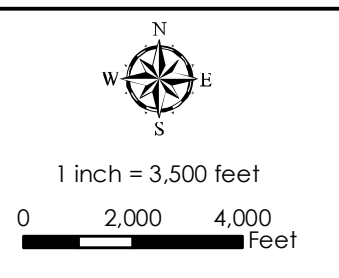
A B



Legend

- ◆ Water Quality Station
- Assessment Waypoint**
- ⊗ Stream Assessment
- Other Waypoint
- 2014 Assessed Rivers: Aquatic Life**
- Fully Supporting
- Not Supporting
- Unassessed
- Local Basin Affected by Aquatic Life Impairment
- Local Basin

PART B: LOCAL BASINS WITH AQUATIC LIFE IMPAIRMENT
 PEQUABUCK RIVER WATERSHED BASED PLAN
 HARTFORD COUNTY, CONNECTICUT

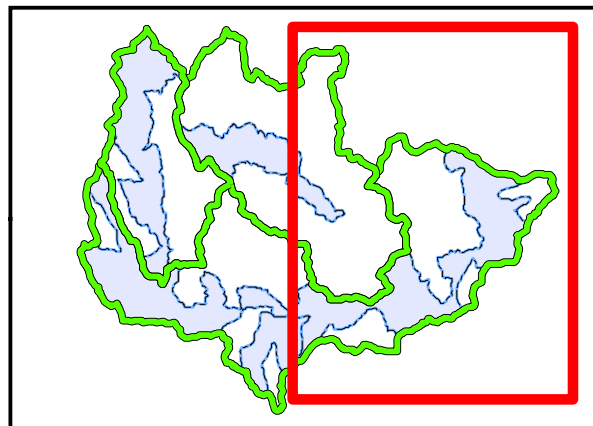


PH PRINCETON HYDRO, LLC.
 1108 OLD YORK ROAD
 P.O. BOX 720
 RINGOES, NJ 08551
 *with offices in NJ, PA and CT

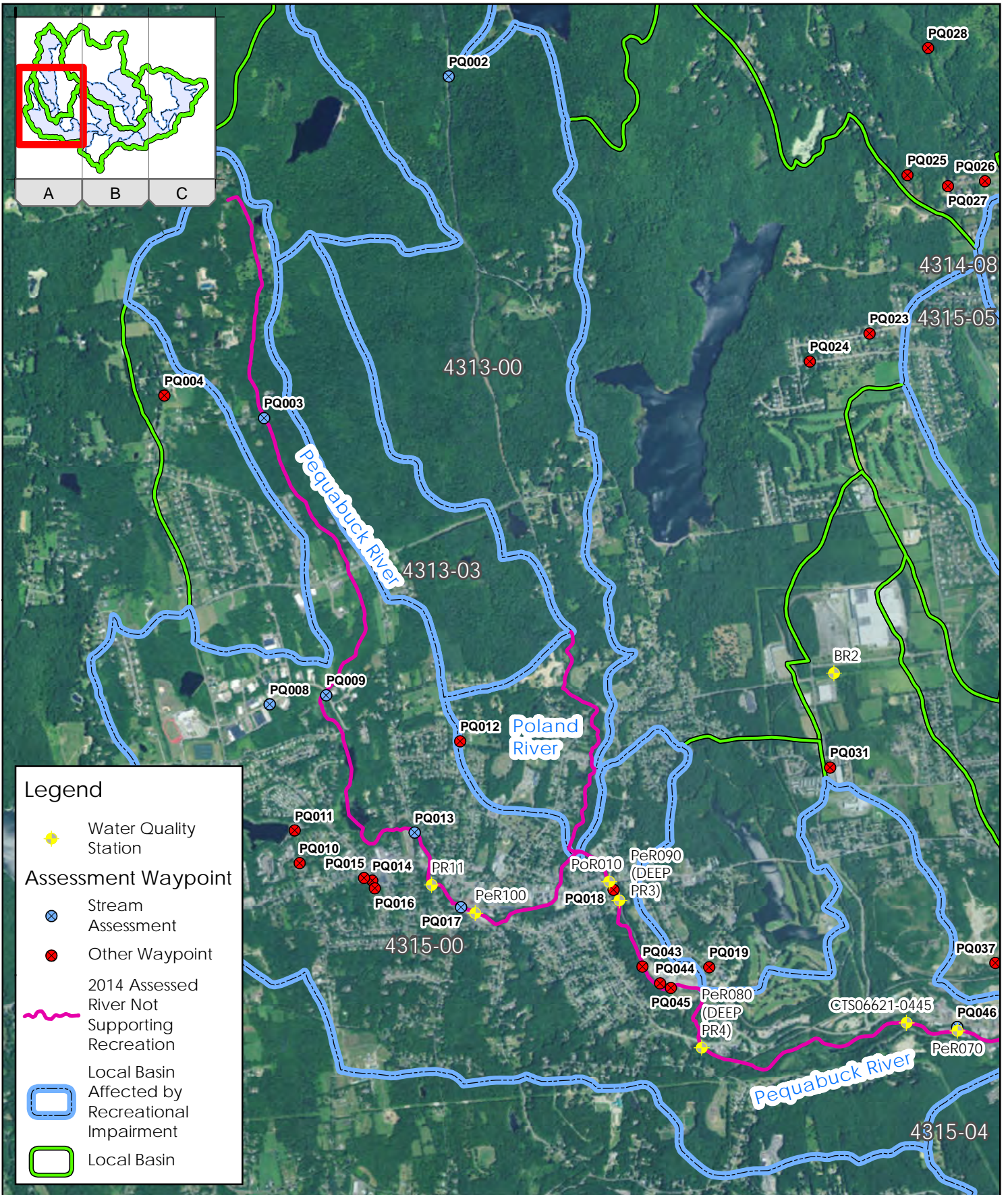
NOTES:
 1. Local basin boundaries and 2014 assessed rivers obtained from CT DEEP.
 2. Water quality stations obtained from the Town of Bristol.
 3. 2016 orthophotography obtained from NAIP.

Map Projection:
 NAD 1983 StatePlane Connecticut FIPS 0600 Feet

LOCATION MAP



A B



Legend

- Water Quality Station
- Assessment Waypoint**
- Stream Assessment
- Other Waypoint
- 2014 Assessed River Not Supporting Recreation
- Local Basin Affected by Recreational Impairment
- Local Basin

PART A: LOCAL BASINS WITH RECREATIONAL IMPAIRMENT

PEQUABUCK RIVER WATERSHED BASED PLAN
HARTFORD COUNTY, CONNECTICUT



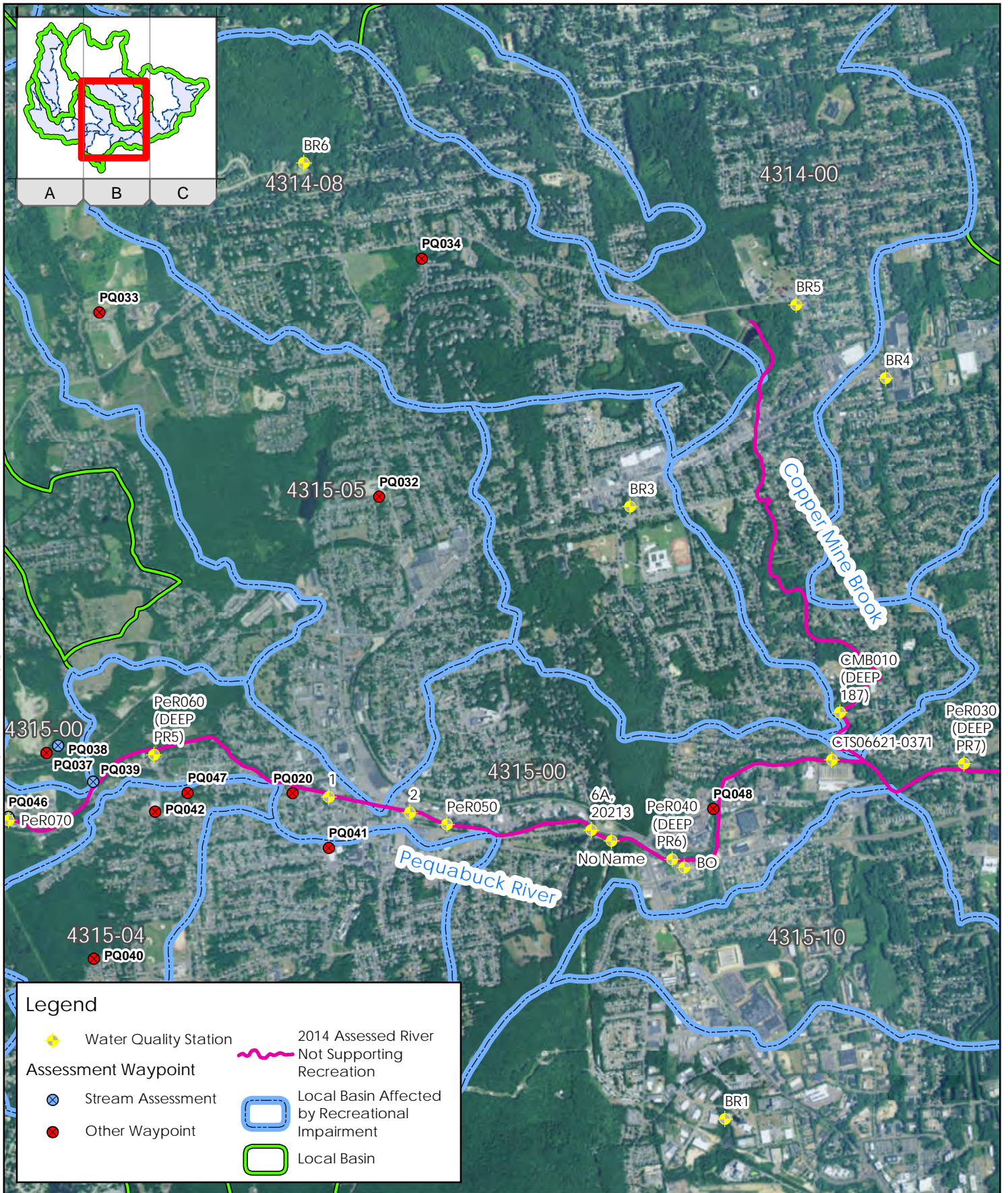
PRINCETON HYDRO, LLC.
1108 OLD YORK ROAD
P.O. BOX 720
RINGOES, NJ 08551
*with offices in NJ, PA and CT

NOTES:

1. Local basin boundaries obtained from CT DEEP.
2. Water quality stations obtained from the Town of Bristol.
3. Basemap credits: Esri, DigitalGlobe, GeoEye, Earthstar Geographics, CNES/Airbus DS, USDA, USGS, AEX, Getmapping, Aerogrid, IGN, IGP, swisstopo, and the GIS User Community.

0 2,000 4,000 Feet

Map Projection: NAD 1983 StatePlane Connecticut FIPS 0600 Feet



PART B: LOCAL BASINS WITH RECREATIONAL IMPAIRMENT

PEQUABUCK RIVER WATERSHED BASED PLAN
HARTFORD COUNTY, CONNECTICUT



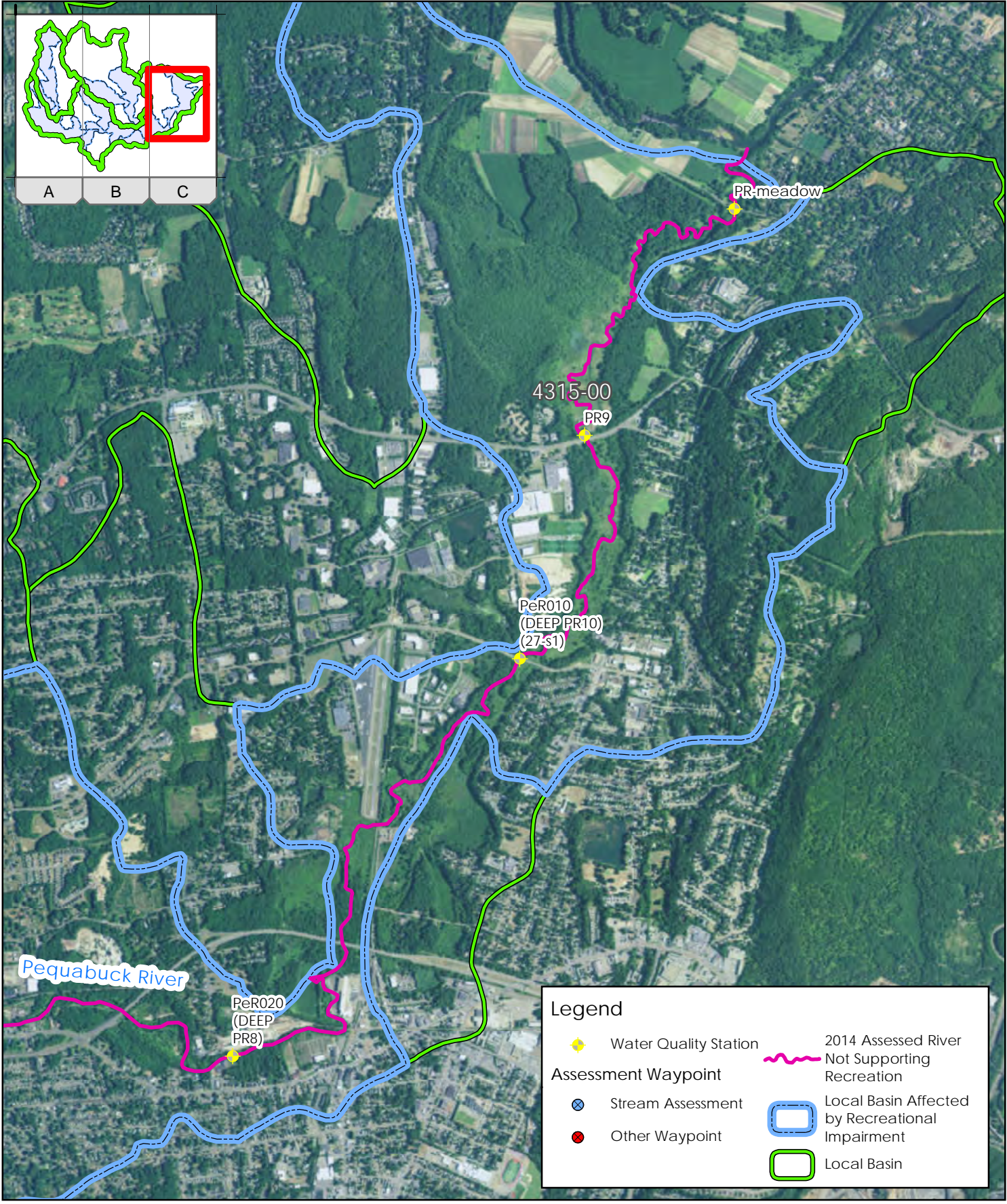
PRINCETON HYDRO, LLC.
1108 OLD YORK ROAD
P.O. BOX 720
RINGOES, NJ 08551
 *with offices in NJ, PA and CT

NOTES:
 1. Local basin boundaries obtained from CT DEEP.
 2. Water quality stations obtained from the Town of Bristol.
 3. Basemap credits: Esri, DigitalGlobe, GeoEye, Earthstar Geographics, CNES/Airbus DS, USDA, USGS, AEX, Getmapping, Aerogrid, IGN, IGP, swisstopo, and the GIS User Community.

0 2,000 4,000 Feet

Map Projection: NAD 1983 StatePlane Connecticut FIPS 0600 Feet

File: E:\GIS\Projects\Pequabuck_GIS\MXD\Pequabuck_RecImpairedLocalBasins_C.mxd, 5/23/2017, Drawn by sbrelbart, Copyright Princeton Hydro, LLC.



Legend

- ◆ Water Quality Station
- ~ 2014 Assessed River Not Supporting Recreation
- ⊗ Stream Assessment
- ⊗ Assessment Waypoint
- Other Waypoint
- Local Basin Affected by Recreational Impairment
- Local Basin

PART C: LOCAL BASINS WITH RECREATIONAL IMPAIRMENT

PEQUABUCK RIVER WATERSHED BASED PLAN
HARTFORD COUNTY, CONNECTICUT



PRINCETON HYDRO, LLC.
1108 OLD YORK ROAD
P.O. BOX 720
RINGOES, NJ 08551
 *with offices in NJ, PA and CT

NOTES:

1. Local basin boundaries obtained from CT DEEP.
2. Water quality stations obtained from the Town of Bristol.
3. Basemap credits: Esri, DigitalGlobe, GeoEye, Earthstar Geographics, CNES/Airbus DS, USDA, USGS, AEX, Getmapping, Aerogrid, IGN, IGP, swisstopo, and the GIS User Community.

0 2,000 4,000 Feet

Map Projection: NAD 1983 StatePlane Connecticut FIPS 0600 Feet