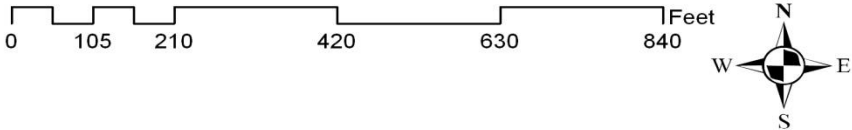
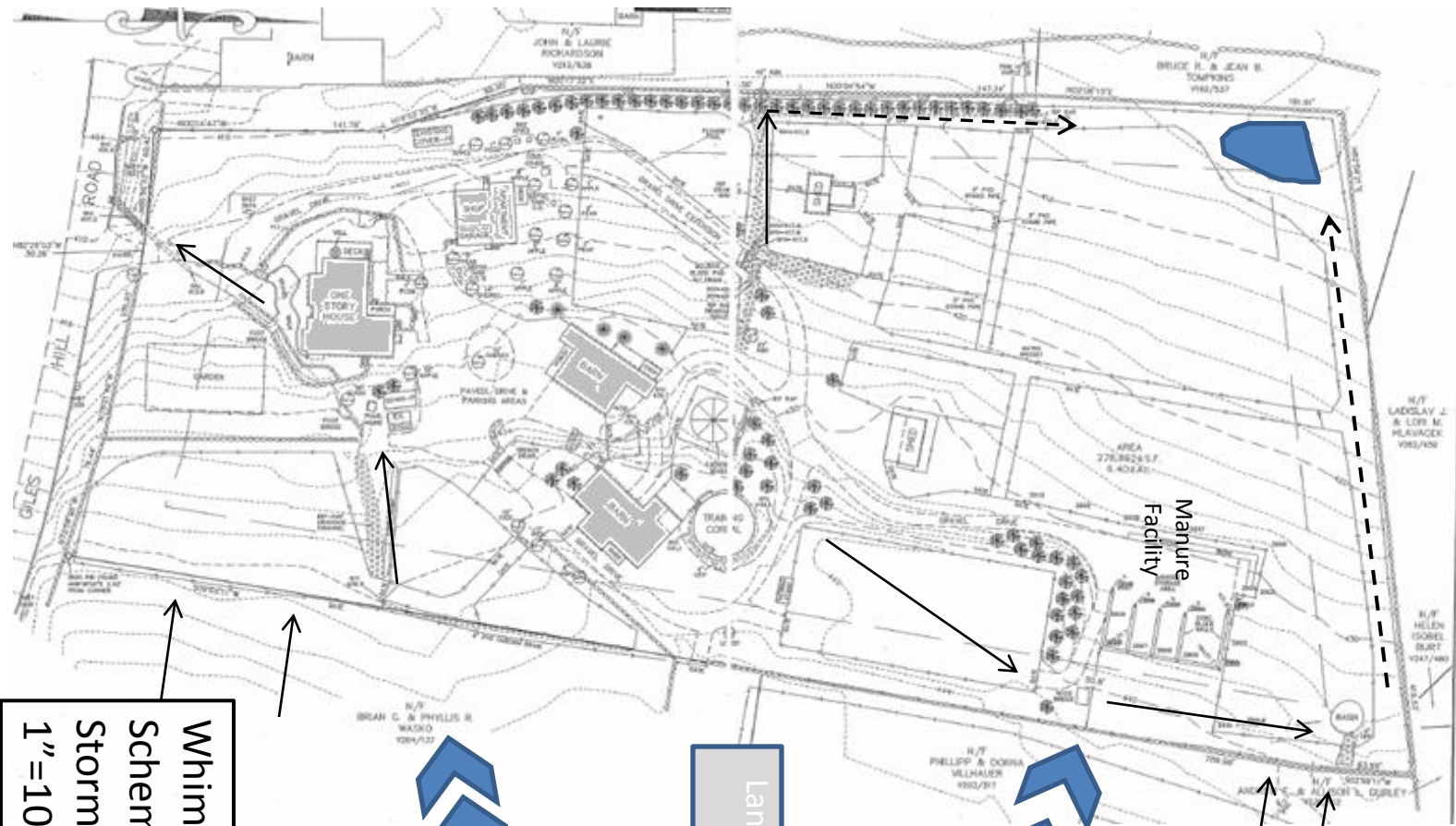


Newer Construction

Large uphill watersheds had a subdivision added which converted agricultural land uses to turf grass and IC land cover. In addition, a large house was built at the top of a swale. Less infiltration and more runoff resulted in significant downstream erosion. Average rainfall has been increasing as well.

Watersheds Adjacent to Whimsy Brook Farm





**Whimsy Brook Farm
Schematic
Stormwater Plan
1"=100'**



Offsite storm water
routed through
preexisting
swale



Land use change
upslope



Offsite
Storm water

Manure
Facility

