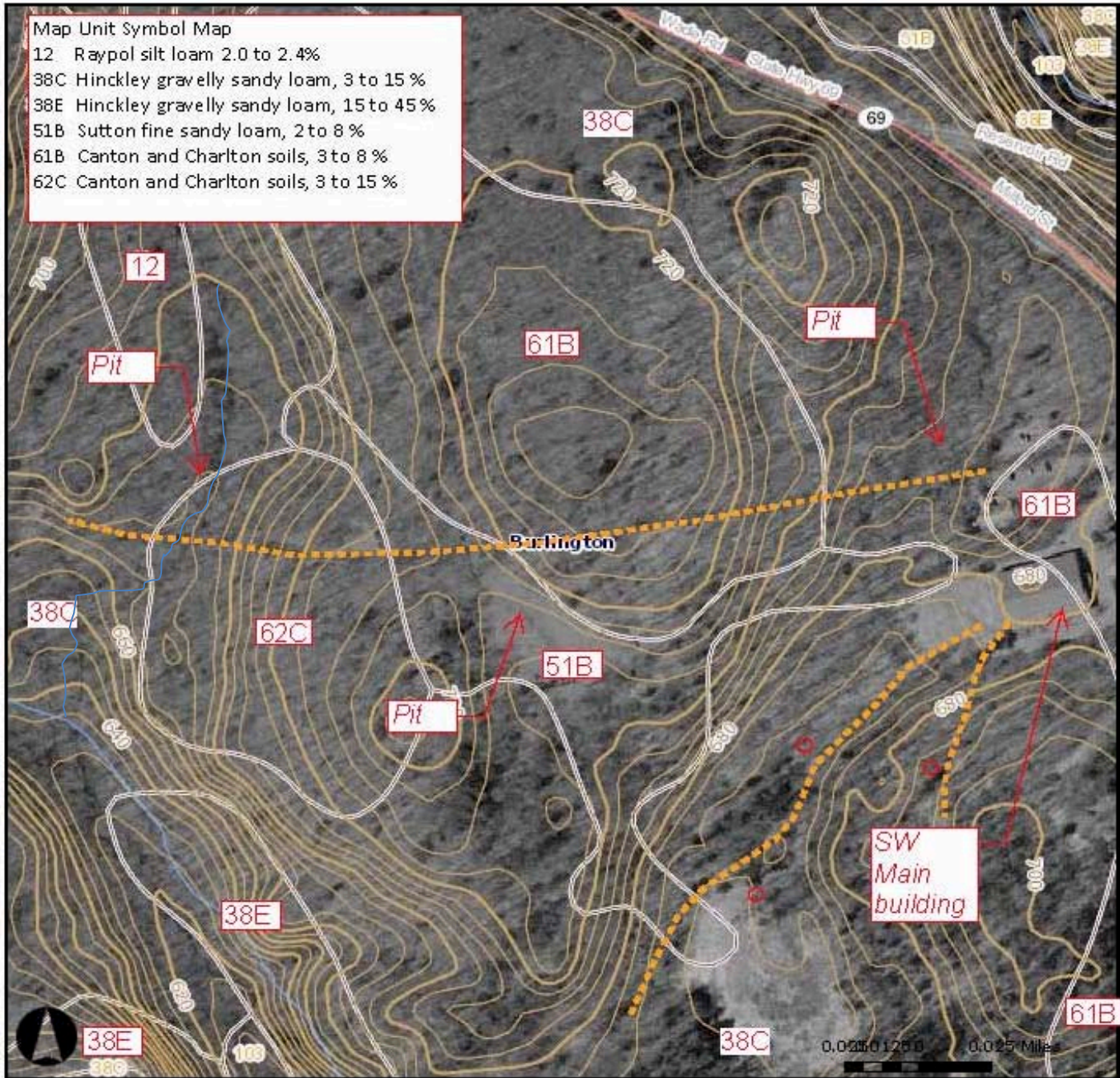


Session Woods Soils Map with Contours

Map Unit Symbol Map

- 12 Raypol silt loam 2.0 to 2.4%
- 38C Hinckley gravelly sandy loam, 3 to 15 %
- 38E Hinckley gravelly sandy loam, 15 to 45 %
- 51B Sutton fine sandy loam, 2 to 8 %
- 61B Canton and Charlton soils, 3 to 8 %
- 62C Canton and Charlton soils, 3 to 15 %



12—Raypol silt loam

- *Landform:* Depressions, drainageways
- *Parent material:* Coarse-loamy eolian deposits over sandy and gravelly glaciofluvial deposits derived from granite and/or schist and/or gneiss
- *0 to 8 inches:* Silt loam
- *8 to 12 inches:* Very fine sandy loam
- *12 to 20 inches:* Silt loam
- *20 to 26 inches:* Silt loam
- *26 to 29 inches:* Very fine sandy loam
- *29 to 52 inches:* Stratified very gravelly coarse sand to loamy fine sand
- *52 to 65 inches:* Stratified very gravelly coarse sand to loamy fine sand

38C—Hinckley gravelly sandy loam, 3 to 15 percent slopes

- *Landform:* Eskers, kames, outwash plains, terraces
- *Parent material:* Sandy and gravelly glaciofluvial deposits derived from granite and/or schist and/or gneiss
- *0 to 8 inches:* Gravelly sandy loam
- *8 to 20 inches:* Very gravelly loamy sand
- *20 to 27 inches:* Very gravelly sand
- *27 to 42 inches:* Stratified cobbly coarse sand to extremely gravelly sand
- *42 to 60 inches:* Stratified cobbly coarse sand to extremely gravelly sand

38E—Hinckley gravelly sandy loam, 15 to 45 percent slopes

- *Landform:* Eskers, kames, outwash plains, terraces
- *Parent material:* Sandy and gravelly glaciofluvial deposits derived from granite and/or schist and/or gneiss
- *0 to 8 inches:* Gravelly sandy loam
- *8 to 20 inches:* Very gravelly loamy sand
- *20 to 27 inches:* Very gravelly sand
- *27 to 42 inches:* Stratified cobbly coarse sand to extremely gravelly sand
- *42 to 60 inches:* Stratified cobbly coarse sand to extremely gravelly sand

51B—Sutton fine sandy loam, 2 to 8 percent slopes, very stony

- *Landform:* Depressions, drainageways
- *Parent material:* Coarse-loamy melt-out till derived from granite and/or schist and/or gneiss
- *0 to 6 inches:* Fine sandy loam
- *6 to 12 inches:* Fine sandy loam
- *12 to 24 inches:* Fine sandy loam
- *24 to 28 inches:* Fine sandy loam
- *28 to 36 inches:* Gravelly fine sandy loam
- *36 to 65 inches:* Gravelly sandy loam

61B—Canton and Charlton soils, 3 to 8 percent slopes, very stony

- *Landform:* Hills
- *Parent material:* Coarse-loamy over sandy and gravelly melt-out till derived from granite and/or schist and/or gneiss
- *0 to 1 inches:* Moderately decomposed plant material
- *1 to 3 inches:* Gravelly fine sandy loam
- *3 to 15 inches:* Gravelly loam
- *15 to 24 inches:* Gravelly loam
- *24 to 30 inches:* Gravelly loam
- *30 to 60 inches:* Very gravelly loamy sand

62C—Canton and Charlton soils, 3 to 15 percent slopes, extremely stony

- *Landform:* Hills
- *Parent material:* Coarse-loamy over sandy and gravelly melt-out till derived from granite and/or schist and/or gneiss
- *0 to 1 inches:* Moderately decomposed plant material
- *1 to 3 inches:* Gravelly fine sandy loam
- *3 to 15 inches:* Gravelly loam
- *15 to 24 inches:* Gravelly loam
- *24 to 30 inches:* Gravelly loam
- *30 to 60 inches:* Very gravelly loamy sand