



Nathan Hale State Forest Management Area



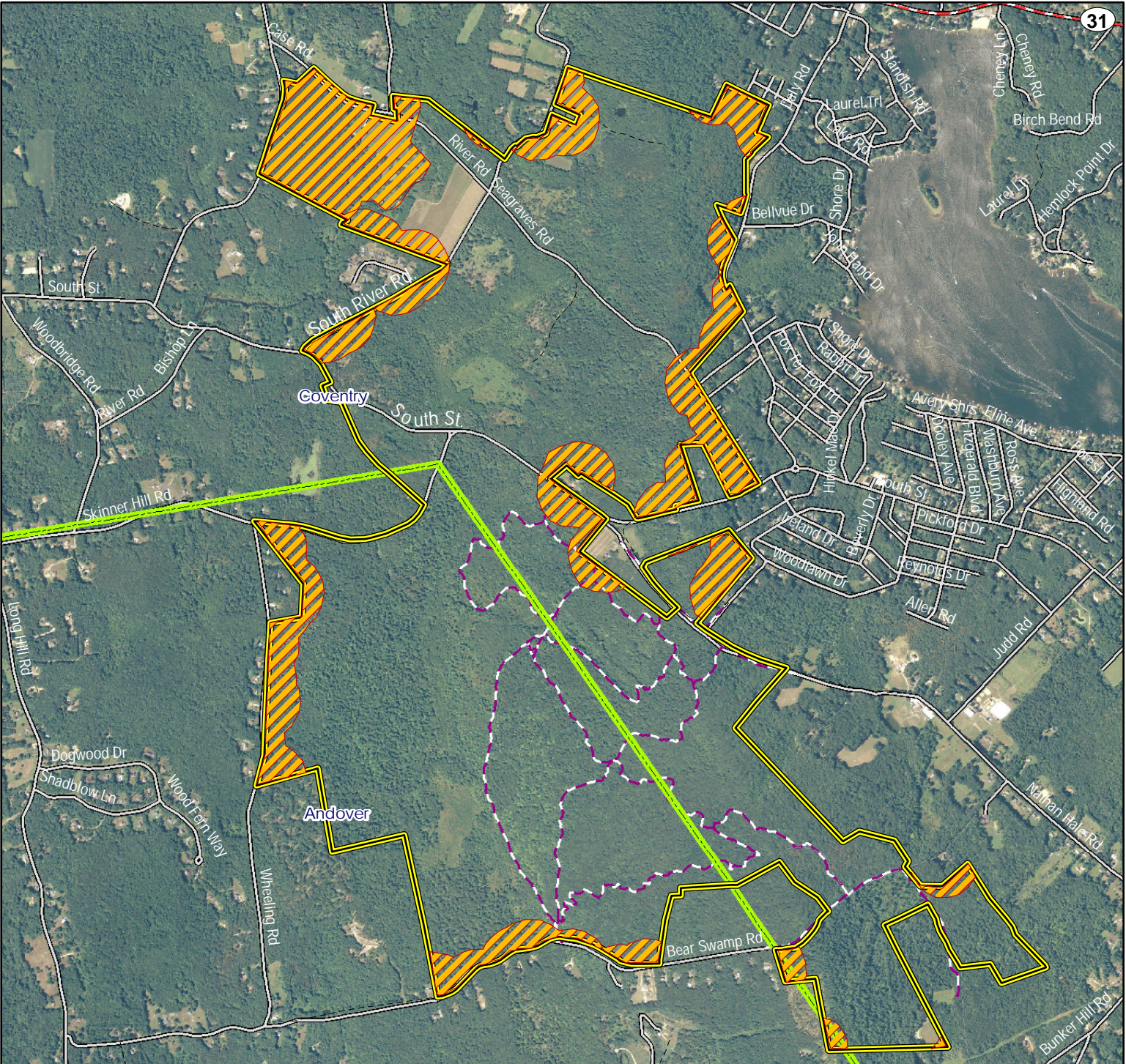
Location: Andover, Coventry; South Coventry Quadrangle

Description: 1553 acres; mixed hardwoods, coniferous plantations, old fields, wetlands, agricultural lands.

Access: Route 6 to South St. and Skinner Hill Rd.

Note: This map depicts an approximation of property boundaries. Please obey all postings.

Symbols: Approximate Boundary Closed to Firearms Hunting Trails



Map Date: 7/23/13; Ortho 2010 NAIP
Map #63

2,200 1,100 0 2,200 Feet

