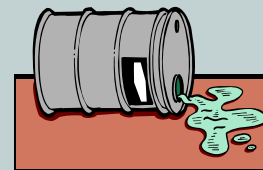


Scovill Industrial Landfill:



This fact sheet was developed by the CT Department of Public Health (CT DPH) to provide a summary of the Scovill Landfill Public Health Assessment document. The purpose of this public health assessment is to evaluate available information about the site and determine whether living and/or working on the Scovill Landfill site presents a public health concern under current conditions. A Public Health Assessment reviews available information about hazardous substances at a site and evaluates whether exposure to them might cause any harm. It is not the same thing as a medical exam or a community health study. Public Health Assessments consider:

- ⇒ What are the levels of hazardous substances*
- ⇒ Are people exposed to contamination and how (breathing, drinking, touching soil)*
- ⇒ How toxic are the hazardous substances, and*
- ⇒ Will working or living nearby or on site effect people's health.*

If you have questions about the document and its findings, please contact CT DPH at (860) 509-7742.

Site Summary

The Scovill Industrial Landfill site was owned and used by the Scovill Manufacturing Company from 1919 to the mid-1970's for the disposal of ash, cinder and other waste materials generated by the facility. The site covers approximately 30 acres. Beginning in 1941, parcels were subdivided, sold and developed. Apartments, condominiums and commercial properties exist on approximately 23 acres of the site. Most of this area is covered with buildings, paved streets and parking lots. There are grass covered yards around some of the apartment and condominium properties. A 7 acre parcel, referred to as the Calabrese Construction Company property was the focus of a removal, capping and fencing effort in the spring/summer of 1998.

Currently, about 316 residents live on site in thirteen apartment buildings. There are also approximately 50 workers who are employed by various small businesses located on the site. There is also an adult daycare facility on site that provides care to approximately 25 clients per day with moderate to severe mental retardation. The Scovill Industrial Landfill site is being proposed as a National Priorities List (NPL) Superfund site by the U.S. EPA.

Conclusions

Under current conditions and using available data, the site presents no apparent public health hazard. The primary way people could be exposed is contact with contaminated soil. Most of the surface soil (0 – 6 inches) samples did not contain contaminants above levels of health concern. The most commonly identified contaminants were PAHs (polycyclic aromatic hydrocarbons). PAHs are a group of more than 100 different compounds that are formed during the incomplete burning of coal, oil, gas, wood, garbage or other organic substances. The levels found in surface soils at this site are not very different from levels found in soil in most urban areas and are not at levels likely to result in adverse health effects. The potential for exposure is minimized due to grass cover, paving and the lack of evidence of gardening. However, exposure could increase if these conditions were to change if digging or other invasive soil activities were to occur. In general, higher levels of contamination were found between 6 – 24 inches below the surface. We do not have information at this time about deeper soils.

Recommendations

1. Residents living on the landfill site should avoid digging, gardening or disturbing soils beneath the surface.
2. The site should be monitored by the local health department and the CT DEP to ensure that digging and invasive soil activities are not occurring.
3. Any invasive soil activities, including the repair of underground utilities, should be monitored by the CT DEP to ensure that the work is done in a way that minimizes the migration of soil and exposures to workers and others in the area.
4. The site should be the focus of a more comprehensive investigation to further define the extent and degree of contamination and appropriate remediation needs.

For More Information:

If you have questions about health issues you can call:

Jennifer Kertanis
CT DPH
860-509-7742

or

Dr. Dada Jabbour
Waterbury Health Department
203-574-6998

If you have questions about site investigations, you can call:

Mike McDaniel
CT DEP
860-424-3798

or

Carolyn Pina-Springer
US. EPA
617-918-1353



This fact sheet is funded in part by funds from the Comprehensive Environmental Response, Compensation, and Liability Act trust fund through a cooperative agreement with the Agency for Toxic Substances and Disease Registry, Public Health Service, U.S. Department of Health and Human Services.