



Connecticut's Health Insurance Marketplace

Overview - Developing APCD in CT

September 10, 2013

Presentation Overview

- APCD Vision
- What is APCD?
- Data Architecture for HIX
- Data Architecture for APCD
- Overall timeline
- Other activities

Vision for Access Health Analytics

Primary Vision

- Costs transparency of various treatments and procedures
- Budgeting out of pocket costs
- Determine which are the high quality hospitals
- Choose plans from the Exchange by comparing premium vs. out of pocket costs
- Understand how access to care varies by payers and by geographic locations
- Understand variations and treatment of chronic care in the state
- Enable other agencies (e.g., Insurance Department, DSS) with information needs

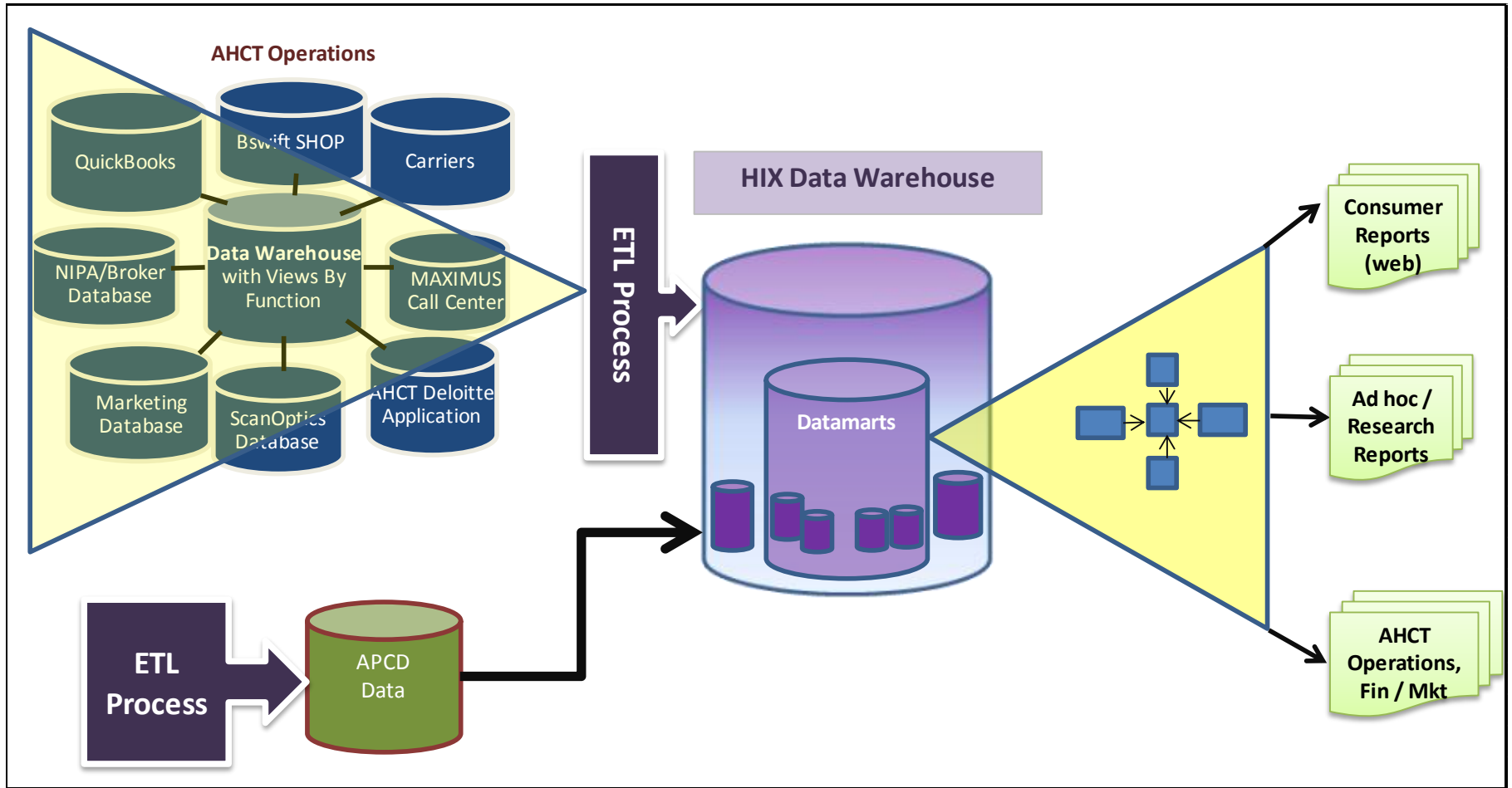
Broader Vision

- Created Access Health Analytics to pioneer innovations in the costs transparency and other analytics space
- Develop an analytic repository of APCD and HIT-CT data warehouse
- Leverage claims and clinical data for ‘comparative effectiveness research’
- Develop a premier research entity to serve other state agencies, universities and research grant work
- Create analytics for AHCT for maximum efficiency and success
- Develop (if necessary) state-specific risk adjustment, research grants, collaborative research, and consulting opportunity for self-sustainability

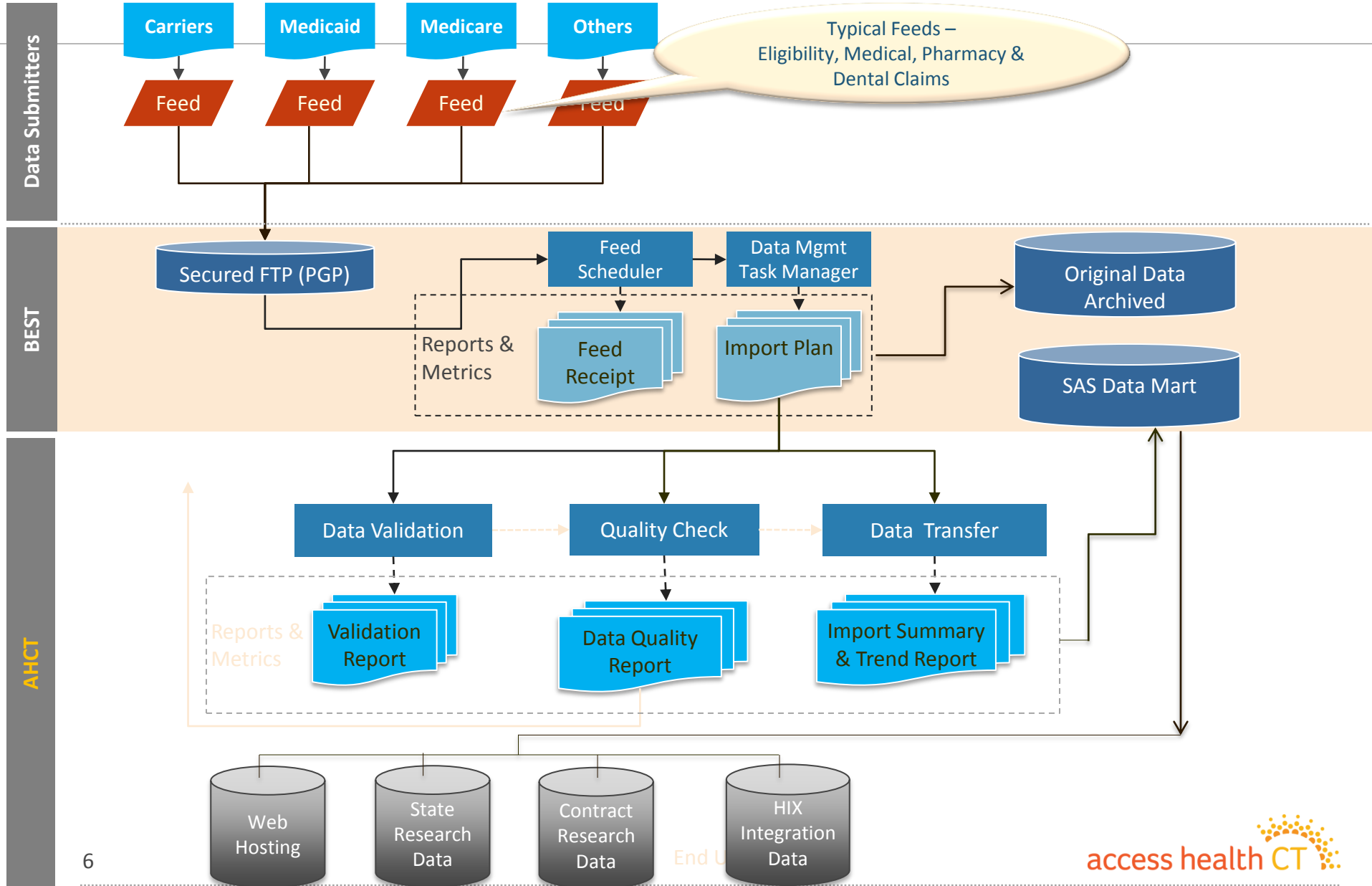
What is APCD?

- Develop a strategy for establishing All-Payer Claims Database (“APCD”)
- The purpose of APCD is to create “... health care information relating to safety, quality, cost effectiveness, access and efficiency for all levels of health care in Connecticut”
- APCD will include data from commercial carriers, PBMs, CT State Employee Insurance, Medicaid and Medicare enrollees for the residents of CT
- The database will contain historical data (≥ 3 years) and then monthly additions starting from August, 2014
- APCD primary database will be isolated and secured from the analytic/reporting database, differentiated by the process of deidentification
- Analytic and public use data will be derived from a secondary datamart
- Includes a high level overview of HIX information architecture

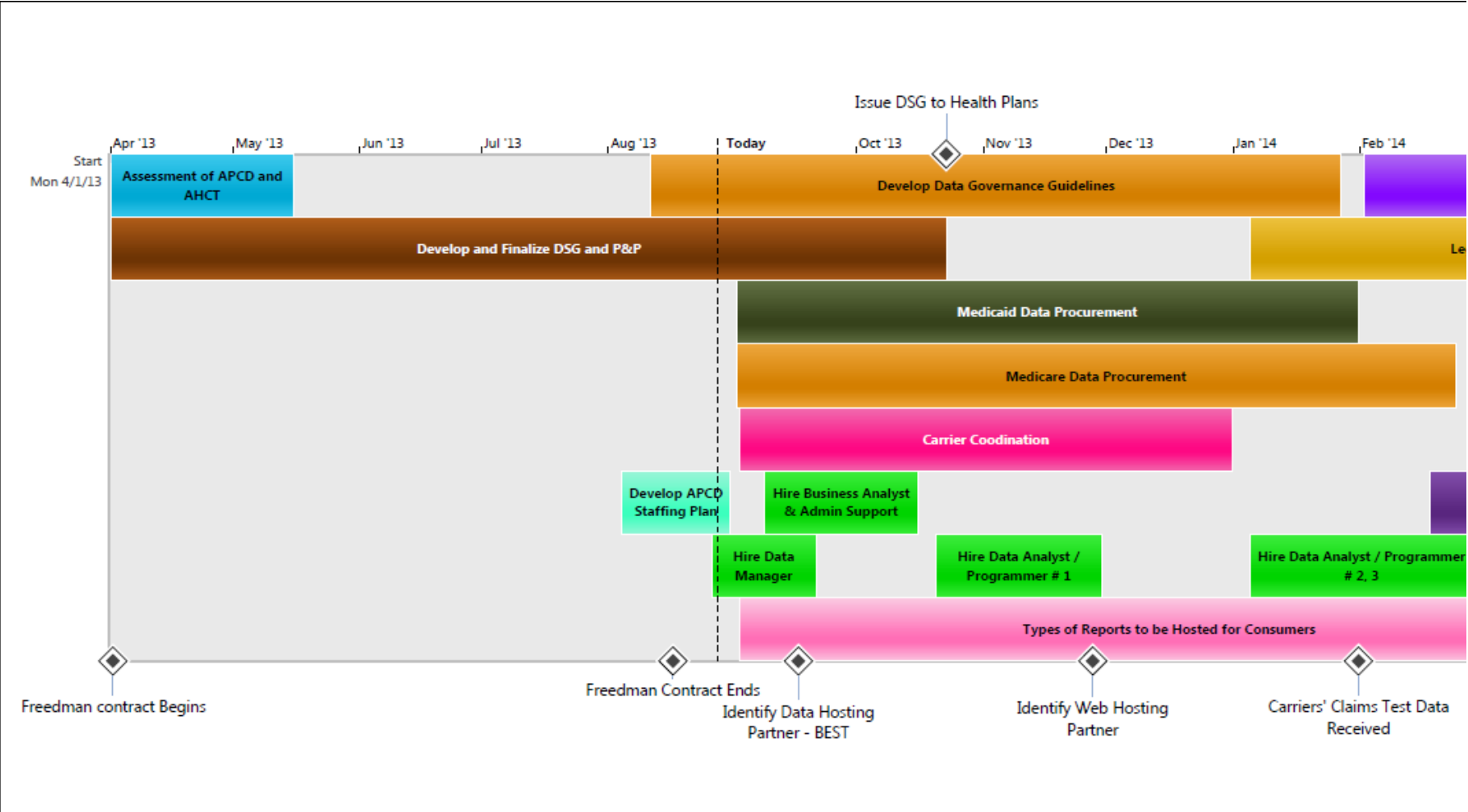
Overview of HIX Infrastructure Integration Opportunity



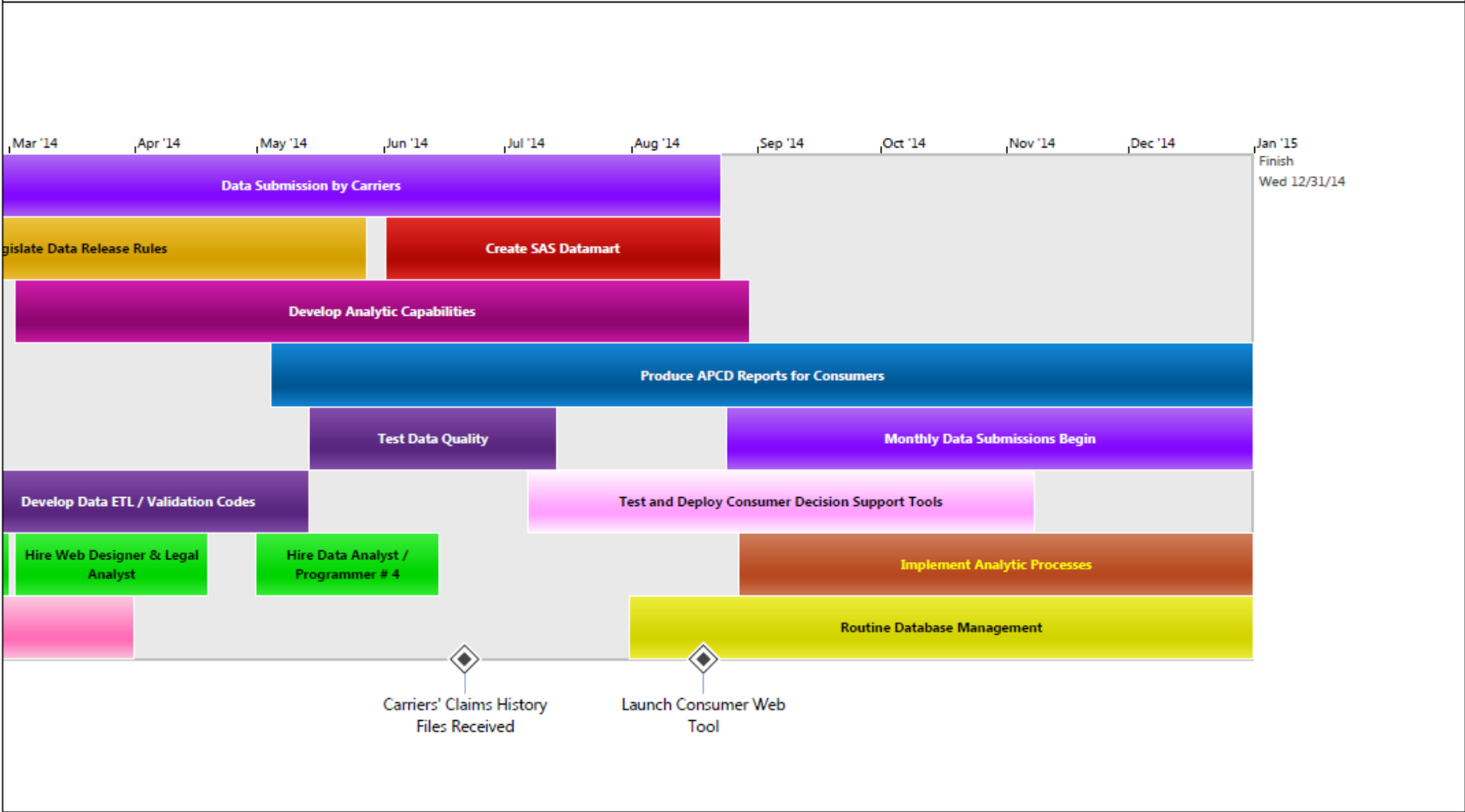
Data Import & Validation Services, *Typical Workflow*



APCD's Overall Timeline



APCD's Overall Timeline



Other ongoing activities

1. P&P and DSG are in public comments phase, which will be completed and placed in front of the AHCT Board in late October, 2013
2. We are actively discussing internally whether to outsource or insource data management tasks for APCD, decision will be made by late October, 2013
3. Access Health Analytics has started working with the carriers, Medicaid Agency and CMS/ResDac for data submission/procurement
4. Started discussion with BEST for infrastructure support, for hosting data and providing security
5. Develop Data Governance and Data Use rules for next legislative session