



# Criminal Justice Policy & Planning Division Monthly Indicators Report

RESEARCH, ANALYSIS & EVALUATION — WWW.CT.GOV/OPM/CriminalJustice/Research

## Highlights

- The total DOC facility population on February 1, 2007 was 19,146. A year later in 2008, it increased by 748 offenders to 19,894 (this was the all-time historical high). The following year on February 1, 2009, the population decrease by 787 offenders to 19,107.
- Typically the Connecticut prison population increases during the month of January, but this year's growth rate was the lowest since 1996. The total DOC facility population for February 1, 2009 was 0.7% higher than the January 1, 2009 figure. (See Chart 5)
- The number of newly sentenced inmates admitted during the month of January 2009 (722) increased significantly over the prior month's (December 2008) figures (287). This follows a seasonal pattern. (See Table 3)
- A year ago, OPM predicted that the January 1, 2009 total DOC facility population would be 18,849. On this date, the actual population was 18,978, a difference of 129 offenders. Statistically, this prediction was highly accurate, with a difference 0.7%.
- In October 2008, OPM revised its total facility population forecast to account for the addition of resources that were added to assist in reducing a backlog created by the temporary parole ban for violent offenders. This revised 6 month forecast proved to be accurate within 2% with each month's population coming in lower than protected levels.

Special thanks to our Criminal Justice partners for their valuable input, support and participation in the development of this report. Without them we could not produce the *Monthly Indicators Report* in a timely manner.

## Twelve Month Prison Population

This month, OPM's Criminal Justice Policy and Planning Division (CJPPD) published its *2009 Annual Correctional Population Forecast Report*. In addition to this annual forecast, CJPPD will continue to produce a revised six (6) month forecast in August of each year.

This annual forecast is based on: 1) an evolving input-output model of the criminal justice system, 2) extensive discussions with criminal justice professionals, and 3) an analysis of historical data trends. From this analysis, CJPPD estimates that the prison population, reflecting seasonal variations, **will fluctuate between 19,200 and 18,600** over the next twelve (12) months.

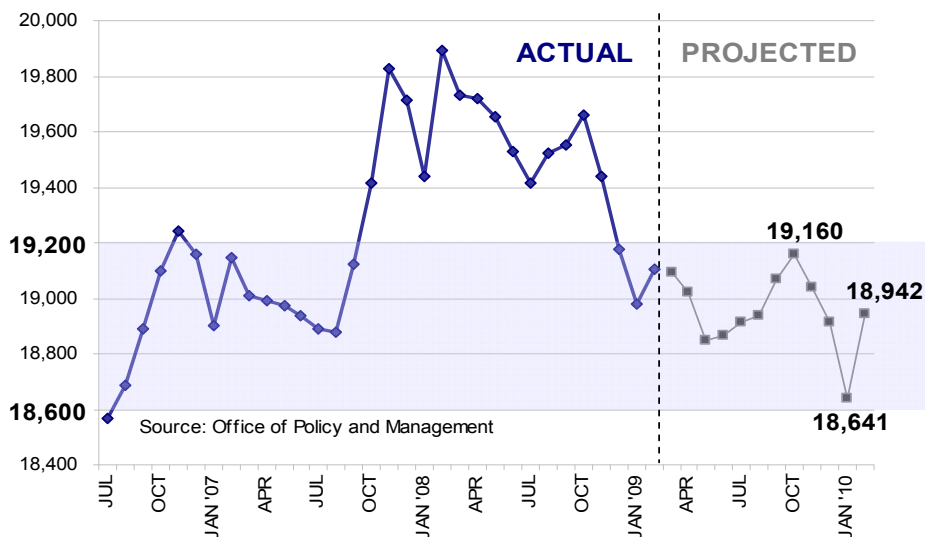
The potential exists for more modest declines in the total facility population, to levels below the current projection estimates, over the next twelve months. The prison system still houses several hundred offenders whose releases were postponed, either directly or indirectly, as a result of the events in 2007. As these offenders are released to parole, or are discharged at the completion of their sentences, releases may increase at a much quicker pace than currently anticipated.

In addition, proposed legislative changes such as the reintroduction of discretionary re-entry furloughs may decrease the prison population. If 45-day re-entry furloughs are introduced, they may reduce demand for prison beds by approximately 80 to 100 inmates.

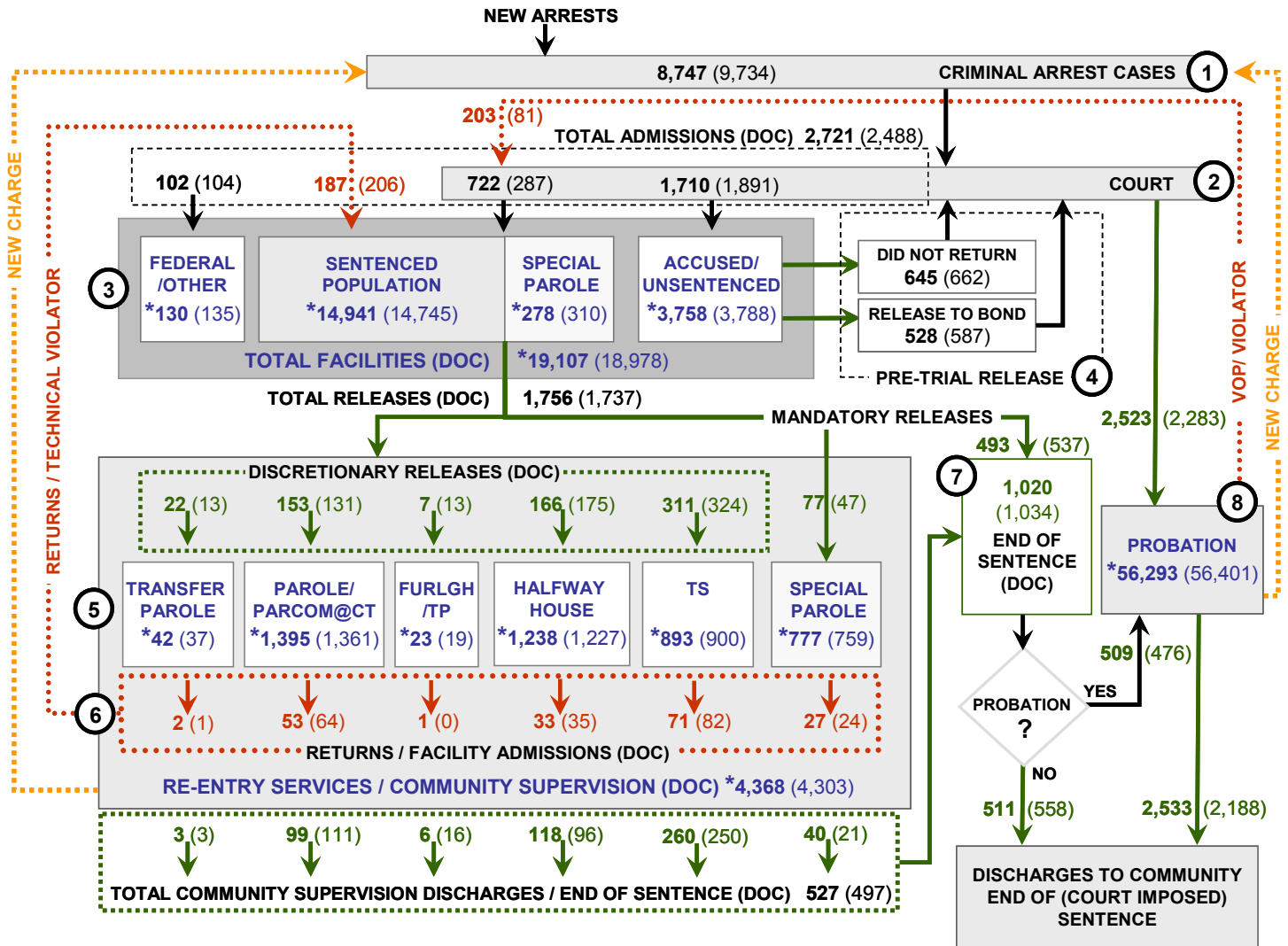
TABLE 1  
12-Month Prison Population Forecast

	Projected
MAR '09	19,095
APR	19,023
MAY	18,849
JUN	18,866
JUL	18,913
AUG	18,937
SEP	19,070
OCT	19,160
NOV	19,037
DEC	18,916
JAN '10	18,641
FEB	18,942

CHART 1 – DOC Total Facility Population Actual and One Year Projection, July 1, 2006 to February 1, 2010



## CHART 2 – Connecticut Criminal Justice System Overview



Asterisks (\*) indicate single-day, snapshots of population count on February 1, 2009.  
 Numbers enclosed by parentheses contain figures for the previous month.  
 Data shown for New Split Sentence Probationer is only approximate due to processing difficulties.  
 Sources: Arrest-Judicial/Court Operations; Court-Judicial/CSSD; Facility/Community Supervision-DOC

Unlike states that have county governments, the majority of agencies within Connecticut’s criminal justice system are State agencies. The one exception is law enforcement, where there are over 90 local police departments and the Connecticut State Police.

- 1) Arrest:** An individual enters into the criminal justice system at the time of arrest.
- 2) Court:** During arraignment, judges review the charges filed against the accused and set a bail amount. Individuals who cannot meet the conditions of bail are placed in DOC facilities to await trial. If the defendant is convicted they may be sentenced to serve a period of probation, a term of incarceration or some other sanction.
- 3) DOC Facilities:** Total facility population at DOC contains the unsentenced population, which is awaiting trial, the sentenced population, inmates on special parole, and individuals charged in federal cases or non-state cases.
- 4) Pre-Trial Release:** Some defendants who are incarcerated pending the disposition of their cases may be eligible for a bond reduction or placement into pre-trial diversionary programs or treatment programs. These programs feature close coordination and cooperation between DOC, CSSD and the Department of Mental Health and Addiction Services (DMHAS).
- 5) Re-Entry Services:** Depending on several factors, an inmate may be eligible to complete a portion of his/her prison sentences under supervision of the DOC’s Parole and Community Services Unit. Non-violent Inmates with sentences shorter than two years are eligible for Transitional Supervision after serving 50% of their sentences. Inmates serving sentences longer than two years may be eligible for parole.
- 6) Returns:** Offenders who violate the conditions of their community release may be returned to prison to serve out the remainder of their sentences.
- 7) End of Sentence:** At the end of their sentences some offenders are required to complete a period of post-release supervision. Split-sentence offenders enter probation where they are monitored by CSSD personnel. Offenders sentenced to special parole remain under DOC supervision.
- 8) Violation of Probation:** If an individual violates the terms of their probation, an arrest warrant is issued and the violator is returned to court.

TABLE 2 – Snapshot of Month DOC Population Counts

	2009			2008	% Change	
	Dec 1st	Jan 1st	Feb 1st	Feb 1st	Monthly	Annual
<b>DOC Facility</b>						
Federal/Other	123	135	130	180	-3.7%	-27.8%
Sentenced	14,979	14,745	14,941	15,397	1.3%	-3.0%
Special Parole	320	310	278	401	-10.3%	-30.7%
Accused/Unsentenced	3,754	3,788	3,758	3,934	-0.8%	-4.5%
<b>Total</b>	<b>19,176</b>	<b>18,978</b>	<b>19,107</b>	<b>19,912</b>	<b>0.7%</b>	<b>-4.0%</b>
<b>DOC Community</b>						
Transfer Parole	63	37	42	37	13.5%	13.5%
Parole/ Parcom Total	1,347	1,361	1,395	1,332	2.5%	4.7%
Parole	1,184	1,197	1,232	1,169	2.9%	5.4%
Parcom @ CT	163	164	163	163	-0.6%	0.0%
Furlgh/Trans Place Total	6	19	23	79	N/A	-70.9%
Furlough	0	0	0	79	-	N/A
Trans Placement	6	19	23	0	N/A	N/A
Halfway House Total	1,229	1,227	1,238	1,070	0.9%	15.7%
Comm Release	928	927	924	903	-0.3%	2.3%
TS	168	165	161	93	-2.4%	73.1%
Parole	77	79	78	34	-1.3%	129.4%
Transfer Parole	1	0	0	3	N/A	N/A
Special Parole	55	56	75	37	33.9%	102.7%
TS Total	896	900	893	961	-0.8%	-7.1%
Special Parole	750	759	777	684	2.4%	13.6%
<b>Total</b>	<b>4,291</b>	<b>4,303</b>	<b>4,368</b>	<b>4,163</b>	<b>1.5%</b>	<b>4.9%</b>

TABLE 3 – Total DOC Admissions and Releases by Month

	2009			2008	% Change	
	Nov	Dec	Jan	Jan	Monthly	Annual
<b>Admissions</b>						
Federal/Other	86	104	102	176	-1.9%	-42.0%
Returns	191	206	187	231	-9.2%	-19.0%
Transfer Parole	-	1	2	-	N/A	N/A
Parole	44	64	53	61	-17.2%	-13.1%
Trans Plac/Furlough	1	-	1	3	-	N/A
HWH	41	35	33	36	-5.7%	-8.3%
TS	68	82	71	85	-13.4%	-16.5%
Special Parole	37	24	27	46	12.5%	-41.3%
New Sentence	341	287	722	221	151.6%	226.7%
VOP	90	81	203	48	150.6%	322.9%
Accused	1,600	1,891	1,710	1,635	-9.6%	4.6%
<b>Total</b>	<b>2,218</b>	<b>2,488</b>	<b>2,721</b>	<b>2,263</b>	<b>9.4%</b>	<b>20.2%</b>
<b>Releases</b>						
Transfer Parole	17	13	22	5	69.2%	340.0%
Parole	119	131	153	105	16.8%	45.7%
Trans Plac/Furlough	4	13	7	131	-46.2%	-94.7%
HWH	158	175	166	161	-5.1%	3.1%
TS	303	324	311	214	-4.0%	45.3%
Special Parole	72	47	77	65	63.8%	18.5%
End of Sentence	953	1,034	1,020	965	-1.4%	5.7%
<b>Total</b>	<b>1,626</b>	<b>1,737</b>	<b>1,756</b>	<b>1,646</b>	<b>1.1%</b>	<b>6.7%</b>
<b>Pre-trial Releases*</b>						
Release to Bond	501	587	528	-	-10.1%	-
Did not return from Court	651	662	645	-	-2.6%	-

\*Measured on incidents and not by individuals.

**Parole**

**Paroles Granted During January 2009:**

During January 2009, the Board conducted 19 full-panel hearings for 234 applicants; 211 were granted parole and 23 were denied. In addition, 4 hearings were conducted for 96 cases involving violations of which 79 cases were granted a new parole date.

TABLE 4A – Monthly Parole Granting Rate

	Hearings	Granted	Rate
NOV	255	217	85%
DEC	272	230	85%
JAN	234	211	90%

Parole hearings are typically held six months prior to an offender's parole eligibility date. An offender may be released to parole on their first eligibility date or a later date. As a result, the time between parole being granted and the offender being released may take much longer than six months.

**Transfer Parole Rates:** In January, 199 cases were reviewed for transfer parole. Of these cases 47 were approved, 60 were denied, and 92 were continued.

TABLE 4B – Monthly Transfer Paroles Granted

	Reviewed	Granted	Denied	Continued	Rate
NOV	177	44	67	66	24.9%
DEC	160	32	70	58	20.0%
JAN	199	47	60	92	23.6%

**Probation**

**Total number of sentenced offenders placed on probation in December was 2,523 (See Chart 2).**

TABLE 5 – Monthly CSSD Direct Sentenced & Probationer Community Placements

	Community Based	Out-patient	Inpatient/ Resident	Total
OCT	1,089	754	30	1,873
NOV	1,093	713	32	1,838
DEC	1,031	742	29	1,802

Data Notes: January 2009 data for Community Placements was not available at the time of this report. Figures are based on data available at the time of this report. Subsequent reports of actual figures may not agree.

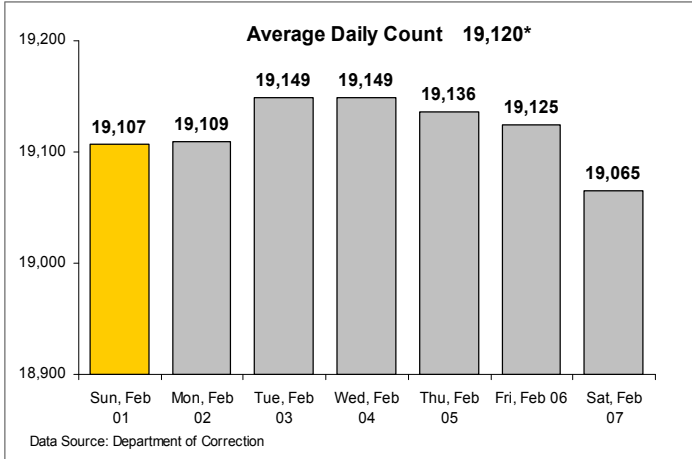
**Pre-trial Diversion Supervision**

**Total number of offenders released to Pre-trial Diversion/Supervision:** 2,598 inmates were released to pre-trial diversion in January. This figure includes offenders who were released from DOC facilities.

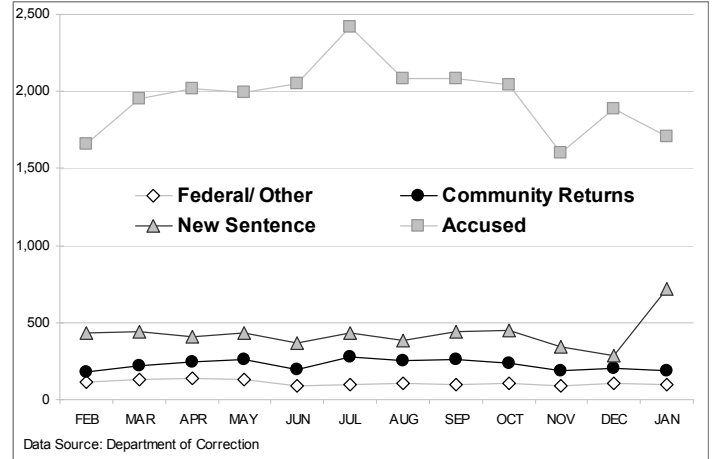
TABLE 6 – Pre-trial Diversion/Supervision

NOV	2,377
DEC	2,697
JAN	2,598

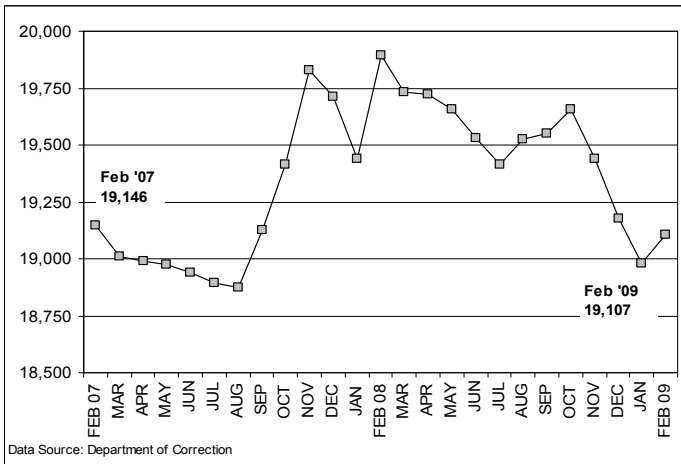
**CHART 3 – Daily DOC Facility Population**  
February 1, 2009 to February 7, 2009



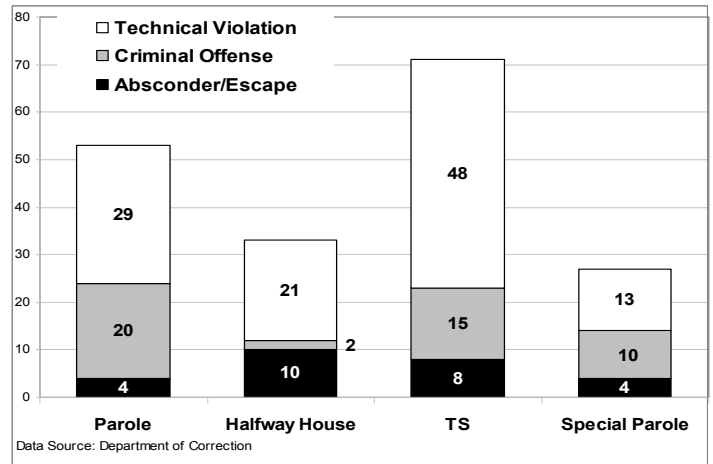
**CHART 6 – Monthly DOC Admissions by Type**  
February 2008 to January 2009



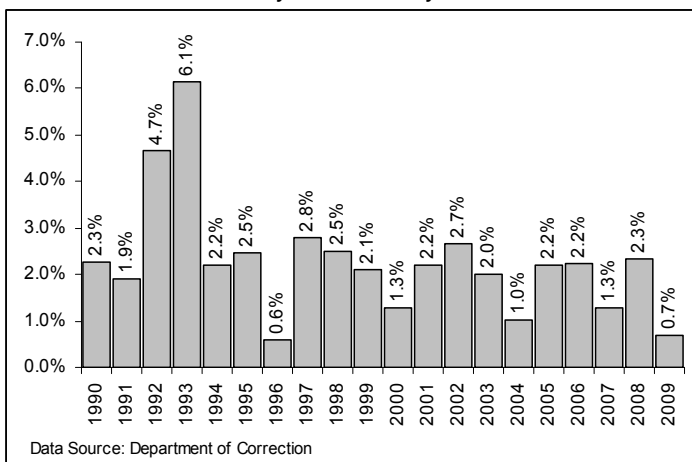
**CHART 4 – Monthly DOC Prison Population**  
February 1, 2007 to February 1, 2009



**CHART 7 – Community Release Readmission Reasons**  
January 2009



**CHART 5 – Prison Population, Percent Change**  
January 1 to February 1



**CHART 8 – Monthly Parole, TS and Special Parole**  
July 2007 to February 2009

