

Criminal Justice Policy & Planning Division

Monthly Indicators Report



RESEARCH, ANALYSIS & EVALUATION — WWW.CT.GOV/OPM/CriminalJustice/Research

Highlights

- On September 1, 2009, 18,874 inmates were incarcerated in Connecticut – 3.6% fewer – than the 19,552 inmates that were in prison a year ago.
- Earlier in the year, the monthly prison population settled to levels not seen in Connecticut since 2007 (See Chart 4). This data suggests that we have entered a period where the size of the prison population will stabilize to levels consistent with historical trends.
- The number of offenders on parole has increased steadily, by 18.6%, since January 2009 (See Chart 8). Monthly releases to parole have also increased in the last year by 63.9% (See Table 3).
- Based on historical trends data, the number of criminal arrests and the accused prison population are both expected to increase during the summer months. This summer, these increases did not materialize (See Charts 5 and 6).
- OPM has produced a new 6-month prison population forecast. In its Annual Forecast, OPM estimated that the prison population would settle within a band between 18,600 and 19,200 through March 2010. Based on the latest DOC data, OPM has adjusted its estimate of the future prison population slightly downward.

This month, The Criminal Justice Division at OPM began receiving data from partner agencies for the 2010 study of recidivism in Connecticut to published in February.

Six Month Prison Population Forecast

The average daily prison population for the first seven days of September was 18,819 (See Chart 3). This figure is lower, by 251 prisoners, than the number projected by OPM in February. Last month, the actual inmate population was 98 prisoners below OPM's estimate.

Several factors have contributed to these lower-than-anticipated

totals. They include: smaller-than-anticipated increases in the accused-prisoner population, increased releases to community supervision programs (See Chart 8) and pre-trial diversion programs.

OPM produces two 6-month prison population forecasts each year. The last forecast, published in February, was based on a set of assumptions that projected a relatively steady and stable decline in inmate numbers over the short term. While these assumptions remain operative, the forecast has been readjusted to reflect the steeper-than-anticipated declines in the facility population. OPM now projects that the number of inmates could fall below 18,400 in January.

TABLE 1 – 6-Month Prison Population Forecast

	2009 Actual (*Avg Daily)	February '09 forecast	September '09 forecast
MAR	19,053*	19,095	-
APR	19,040*	19,023	-
MAY	18,845*	18,849	-
JUN	18,765*	18,866	-
JUL	18,854*	18,913	-
AUG	18,839*	18,937	-
SEP	18,819*	19,070	-
OCT		19,160	18,908
NOV		19,037	18,787
DEC		18,916	18,667
JAN '10		18,641	18,396
FEB		18,942	18,693
MAR		18,930	18,681

* Average Daily Count, first week of the month

CHART 1 – Total DOC Facility Population, Actual and Projected
January 1, 2008 through March 1, 2010

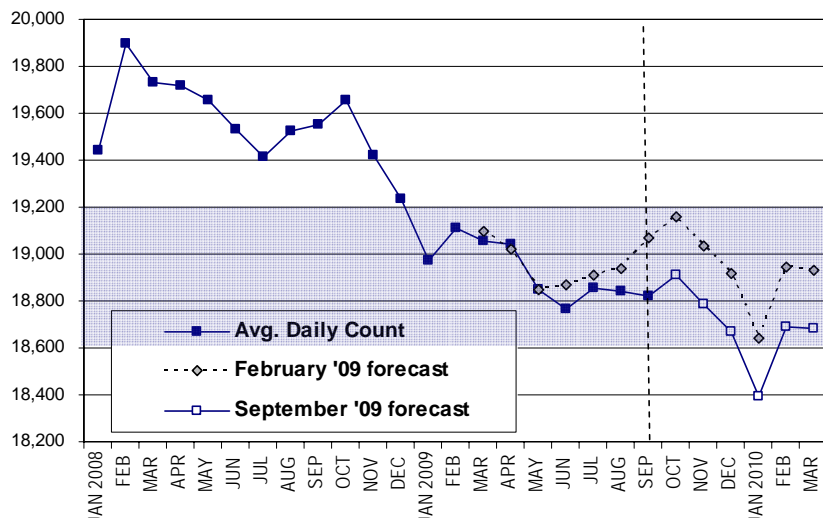
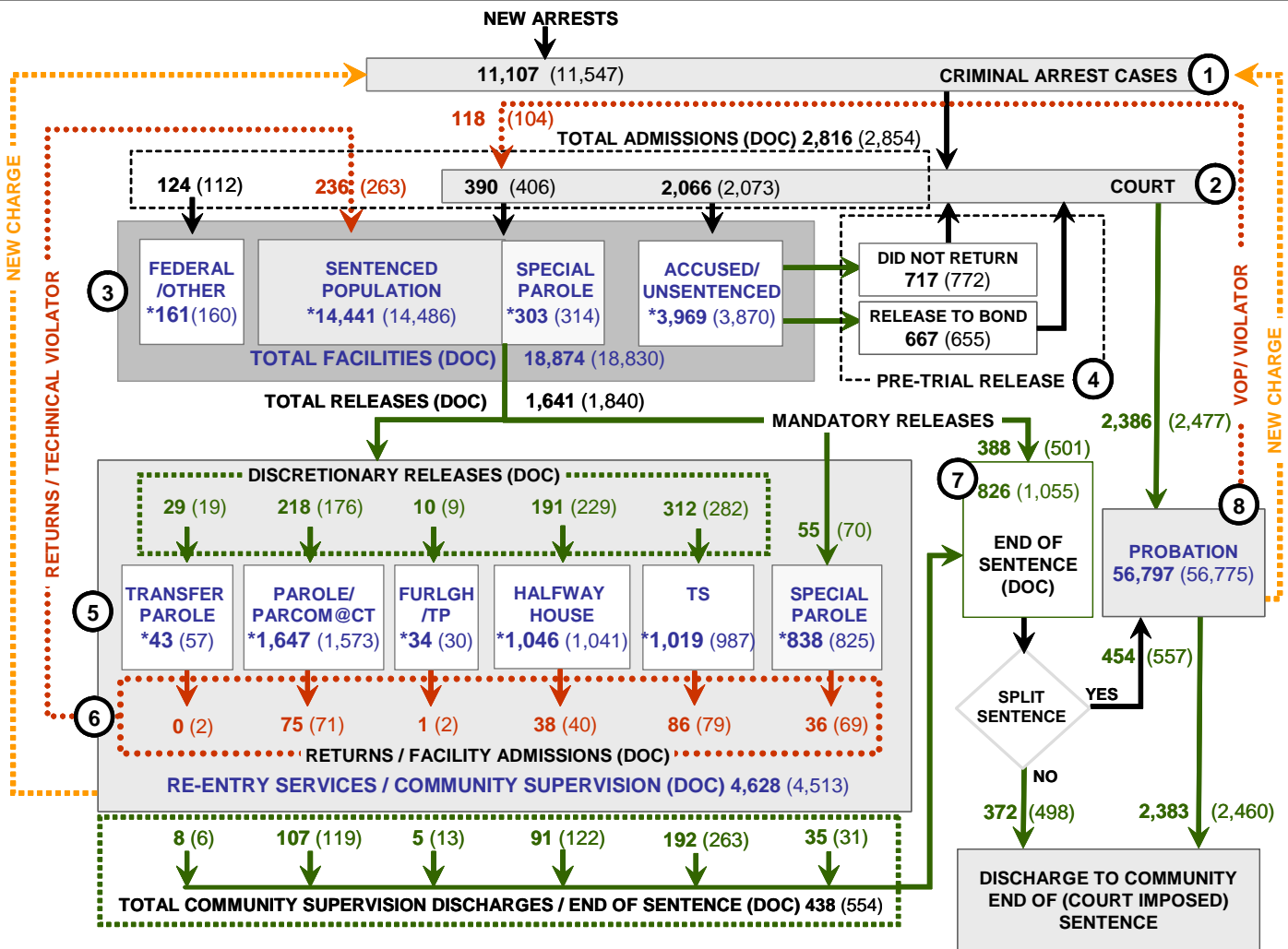


CHART 2 – Connecticut Criminal Justice System Overview



Asterisks (*) indicate the single-day population count on September 1, 2009. Numbers enclosed by parentheses contain the figure for the previous month. Data shown for New Split Sentence Probationer is only approximate due to processing difficulties. Sources: Arrest-Judicial/Court Operations; Court-Judicial/CSSD; Facility/Community Supervision-DOC

Unlike states that have county governments, the majority of agencies within Connecticut's criminal justice system are State agencies. The one exception is law enforcement, where there are over 90 local police departments and the Connecticut State Police.

- 1) Arrest:** An individual enters into the criminal justice system at the time of arrest.
- 2) Court:** During arraignment, judges review the charges filed against the accused and set a bail amount. Individuals who cannot meet the conditions of bail are placed in DOC facilities to await trial. If the defendant is convicted they may be sentenced to serve a period of probation, a term of incarceration or some other sanction.
- 3) DOC Facilities:** Total facility population at DOC contains the unsentenced population, which is awaiting trial, the sentenced population, inmates on special parole, and individuals charged in federal cases or non-state cases.
- 4) Pre-Trial Release:** Some defendants who are incarcerated pending the disposition of their cases may be eligible for a bond reduction or placement into pre-trial diversionary programs or treatment programs. These programs feature close coordination and cooperation between DOC, CSSD and the Department of Mental Health and Addiction Services (DMHAS).
- 5) Re-Entry Services:** Depending on several factors, an inmate may be eligible to complete a portion of his/her prison sentences under supervision of the DOC's Parole and Community Services Unit. Non-violent Inmates with sentences shorter than two years are eligible for Transitional Supervision after serving 50% of their sentences. Inmates serving sentences longer than two years may be eligible for parole.
- 6) Returns:** Offenders who violate the conditions of their community release may be returned to prison to serve out the remainder of their sentences.
- 7) End of Sentence:** At the end of their sentences some offenders are required to complete a period of post-release supervision. Split-sentence offenders enter probation where they are monitored by CSSD personnel. Offenders sentenced to special parole remain under DOC supervision.
- 8) Violation of Probation:** If an individual violates the terms of their probation, an arrest warrant is issued and the violator is returned to court.

TABLE 2 – Snapshot of Month DOC Population Counts

	2009			2008	% Change	
	July 1st	Aug 1st	Sept 1st	Sept 1st	Monthly	Annual
DOC Facility						
Federal/Other	162	160	161	167	0.6%	-3.6%
Sentenced	14,598	14,486	14,441	14,881	-0.3%	-3.0%
Special Parole	273	314	303	346	-3.5%	-12.4%
Accused/Unsentenced	3,858	3,870	3,969	4,158	2.6%	-4.5%
Total	18,891	18,830	18,874	19,552	0.2%	-3.5%
DOC Community						
Transfer Parole	95	57	43	55	-24.6%	-21.8%
Parole/ Parcom Total	1,534	1,573	1,647	1,343	4.7%	22.6%
Parole	1,369	1,414	1,480	1,182	4.7%	25.2%
Parcom @ CT	165	159	167	161	5.0%	3.7%
Furlgh/Trans Place Total	31	30	35	0	16.7%	-
Furlough	0	0	0	0	-	-
Trans Placement	31	30	35	0	16.7%	-
Halfway House Total	994	1,041	1,046	1,208	0.5%	-13.4%
Comm Release	796	857	874	925	2.0%	-5.5%
TS	100	83	71	166	-14.5%	-57.2%
Parole	51	56	58	66	3.6%	-12.1%
Transfer Placement	0	0	0	0	-	-
Special Parole	47	45	43	51	-4.4%	-15.7%
TS Total	1,035	987	1,019	936	3.2%	8.9%
Special Parole	851	825	838	709	1.6%	18.2%
Total	4,540	4,513	4,628	4,251	2.5%	8.9%

TABLE 3 – Total DOC Admissions and Releases by Month

	2009			2008	% Change	
	June	July	August	August	Monthly	Annual
Admissions						
Federal/Other	102	112	124	109	10.7%	13.8%
Returns	241	263	236	254	-10.3%	-7.1%
Transfer Parole	2	2	0	4	-100.0%	-100.0%
Parole	62	71	75	50	5.6%	50.0%
Trans Plac/Furlough	2	2	1	0	-50.0%	-
HWH	54	40	38	45	-5.0%	-15.6%
TS	69	79	86	111	8.9%	-22.5%
Special Parole	52	69	36	44	-47.8%	-18.2%
New Sentence	388	406	390	385	-3.9%	1.3%
VOP	102	104	118	109	13.5%	8.3%
Accused	2,102	2,073	2,066	2080	-0.3%	-0.7%
Total	2,833	2,854	2,816	2,828	-1.3%	-0.4%
Releases						
Transfer Parole	25	19	29	15	52.6%	93.3%
Parole	179	176	218	133	23.9%	63.9%
Trans Plac/Furlough	15	9	10	-	11.1%	-
HWH	118	229	191	162	-16.6%	17.9%
TS	354	282	312	312	10.6%	0.0%
Special Parole	76	70	55	45	-21.4%	22.2%
End of Sentence	952	1,055	826	1,027	-21.7%	-19.6%
Total	1,719	1,840	1,641	1,694	-10.8%	-3.1%
Pre-trial Releases*						
Release to Bond	667	655	667	677	1.8%	-1.5%
Did not return from Court	669	772	717	759	-7.1%	-5.5%

*Measured by occurrence, not by individual.

Parole

Paroles Granted During August 2009: 237

During August, the Board conducted 24 full-panel hearings where they considered 282 cases. In 237 cases, offenders were granted parole dates; in 45 cases, offenders were either denied parole or their cases were continued. In addition, 50 cases were involving revocations or rescissions were considered. Of these, 39 were granted re-parole.

TABLE 4A –Paroles Granted, August 2009

	Hearings	Granted	Rate
JUN	336	290	86%
JUL	291	246	85%
AUG	282	237	84%

Data Notes: Figures are based on actual data available at the time of this report. Subsequent reports may not agree.

Parole hearings are typically held six months prior to an offender's parole eligibility date. An offender may be released to parole on their first eligibility date or a later time. As a result, the time between parole being granted and the offender being released to parole may take longer than six months.

August Transfer Parole Approval Rates: 24%.

In August, 312 cases were reviewed for transfer parole: 74 cases were approved, 153 cases were denied, and 85 were continued.

TABLE 4B –Transfer Paroles Reviews, Aug '09

	Reviewed	Granted	Denied	Continued	Rate
JUNE	428	57	230	141	13%
JULY	255	81	115	59	32%
AUG	312	74	153	85	24%

Probation

Total number sentenced offenders placed on probation in August: 2,386 (See Chart 2).

TABLE 5 – Monthly CSSD Direct Sentenced & Probationer Community Placements

	Community Based	Out-patient	Inpatient/ Resident	Total
MAY	1,136	770	43	1,949
JUN	1,261	855	39	2,155
JUL	1,277	789	34	2,100

Data Notes: August data for Community Placements was not available when this report was produced. Figures are based on the latest data available at publication time. Figures in subsequent issues may not agree with those published here.

Pre-trial Diversion Supervision

Offenders released to Pre-trial Diversion and/or Supervision in August: 2,792. This figure includes unsentenced offenders who were released from DOC facilities in August.

TABLE 6 – Pre-trial Diversion/Supervision

JUNE	3,060
JULY	2,920
AUG	2,792

CHART 3 – Snapshot Daily DOC Facility Population
 Sept. 1, 2009 to Sept. 7, 2009

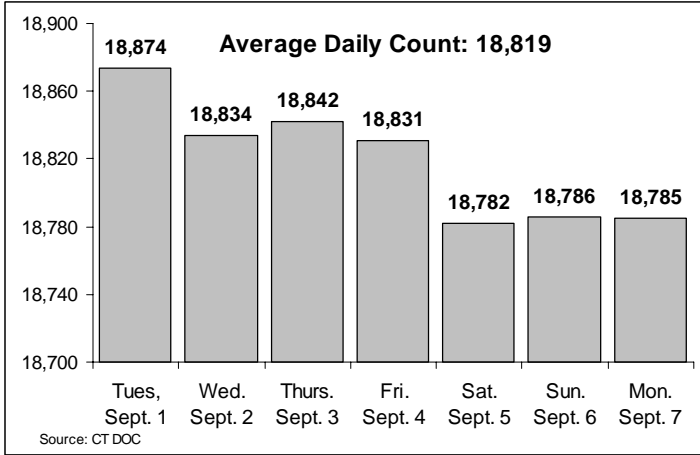


CHART 6 – Monthly DOC Admissions by Type
 August 2008 to August 2009

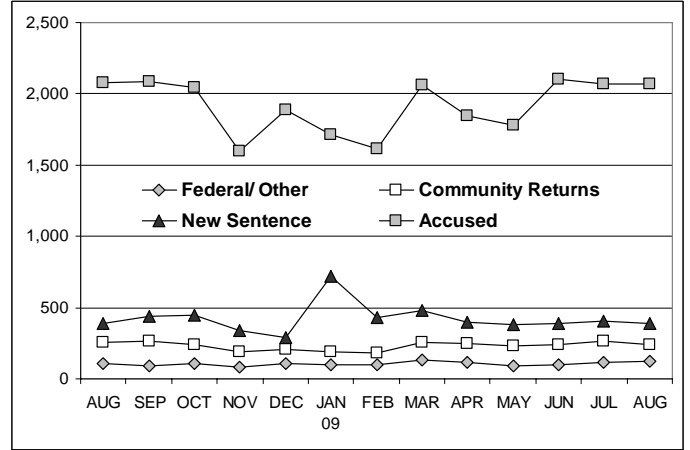


CHART 4 – Snapshot Monthly DOC Prison Population
 January 1 through December 1 (Calendar Year)

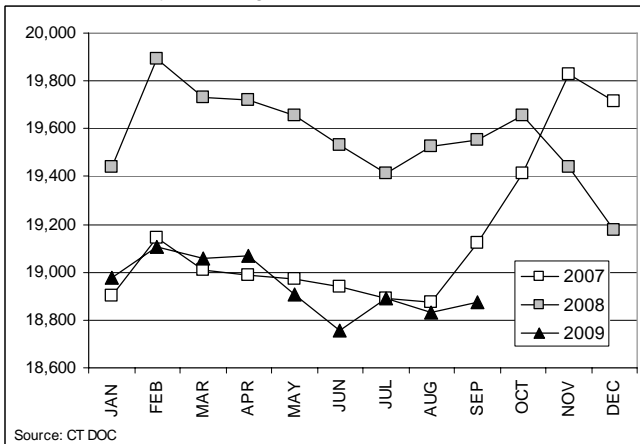


CHART 7 – Monthly Readmissions from Community Release Programs - August 2009

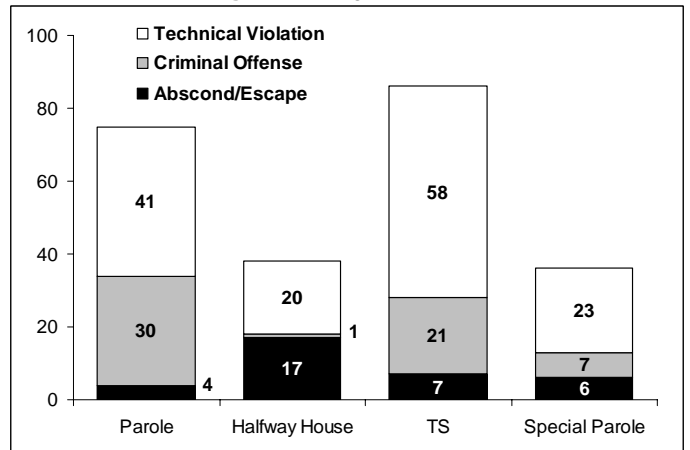


CHART 5 – Statewide Criminal Arrests, August 2009
 total against the 6-year monthly average

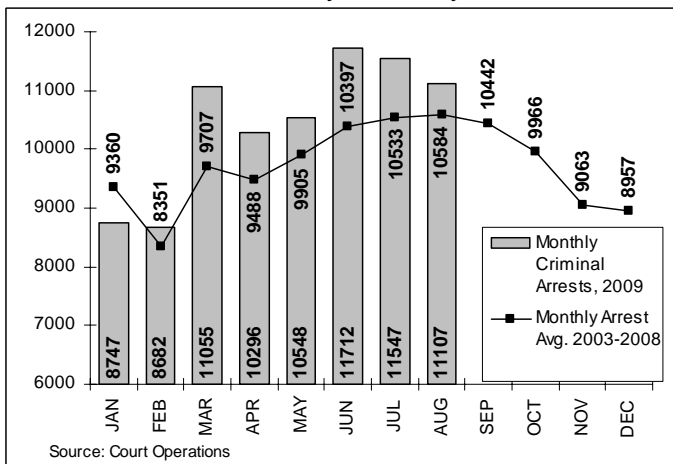


CHART 8 – Snapshot Monthly Parole, TS and Special Parole
 April 1, 2008 to September 1, 2009

