

Criminal Justice Policy & Planning Division

Monthly Indicators Report



RESEARCH, ANALYSIS & EVALUATION — WWW.CT.GOV/OPM/CriminalJustice/Research

Highlights

- On November 1st the DOC inmate count was 18,642, 799 lower than the figure a year earlier.
- On November 6th, Gov. Rell asked Acting DOC Commissioner Murphy for recommendations to close a prison facility in the state. The Governor cited declining inmate numbers, the success of prisoner re-entry programs and the recent graduation of 125 new correction officers as the reasons for her request. Murphy's report is due on November 27th.
- Parole offices across the state are preparing to receive more cases as the DOC begins to process offenders who are eligible for 45-day re-entry furloughs that were approved in the latest state budget. Currently, estimates vary over how many offenders may actually benefit from the program.
- No one can identify a single cause for the recent declines in the prison population. Analysis of system flow reveals that several small changes appear to have combined to produce larger-than-anticipated results. For some time, monthly prison admits have been flat or fallen while end-of-sentence discharges and releases to community supervision have risen steadily.

The analysis of data on 16,421 sentenced offenders who were released during 2005 is currently underway at CJPPD. Preliminary results reveal that the recidivism rate for Connecticut prisoners remained stable between 2004 and 2005.

Six Month Prison Population Forecast

For over 20 months, OPM has tracked a rather steep decline in the prison population. This November, state prisons held 1,250 fewer offenders than they did 21 months earlier, in February 2008.

While recent declines in the prison population may appear dramatic, a decline of this magnitude is not without precedent in the state. Since 1999, the state inmate count has grown by over 20% (See Chart 5). That increase did not occur in a gradual manner. In fact, over the last decade the state prison population has surged and ebbed several times. Between January 2001 and February 2003, the prison population grew by about 2,000 offenders. This was followed by a two-year period in which the inmate count fell by over 1,600.

CJPPD anticipates that inmate numbers will continue to decline through the New Year.

TABLE 1 –Prison Population Forecast

| | 2009 Actual (*Avg Daily) | September '09 forecast | February '09 forecast |
|---------|-----------------------------|---------------------------|--------------------------|
| MAR | 19,053* | - | 19,095 |
| APR | 19,040* | - | 19,023 |
| MAY | 18,845* | - | 18,849 |
| JUN | 18,765* | - | 18,866 |
| JUL | 18,854* | - | 18,913 |
| AUG | 18,839* | - | 18,937 |
| SEP | 18,819* | - | 19,070 |
| OCT | 18,772* | 18,908 | 19,160 |
| NOV | 18,625* | 18,787 | 19,037 |
| DEC | - | 18,667 | 18,916 |
| JAN '10 | - | 18,396 | 18,641 |
| FEB | - | 18,693 | 18,942 |
| MAR | - | 18,681 | 18,930 |

* Average Daily Count, first week of the month

CHART 1 – Total DOC Facility Population, Actual and Projected
January 1, 2008 through March 1, 2010

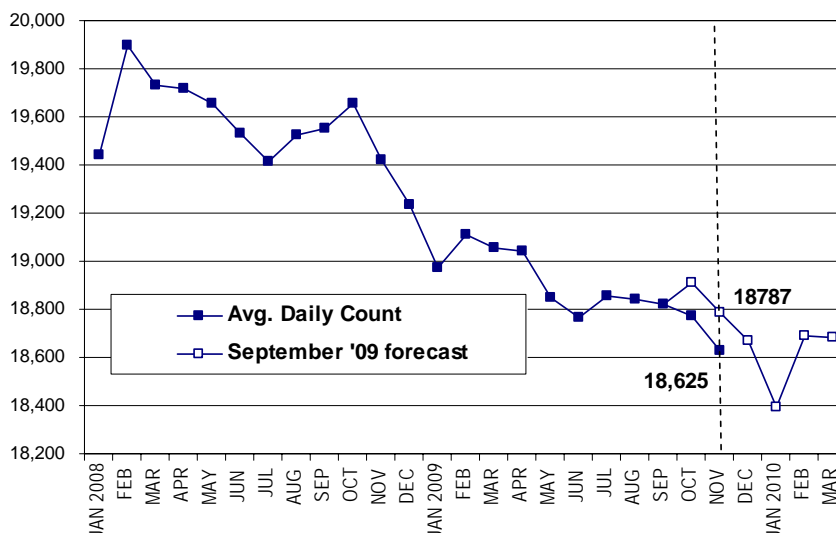
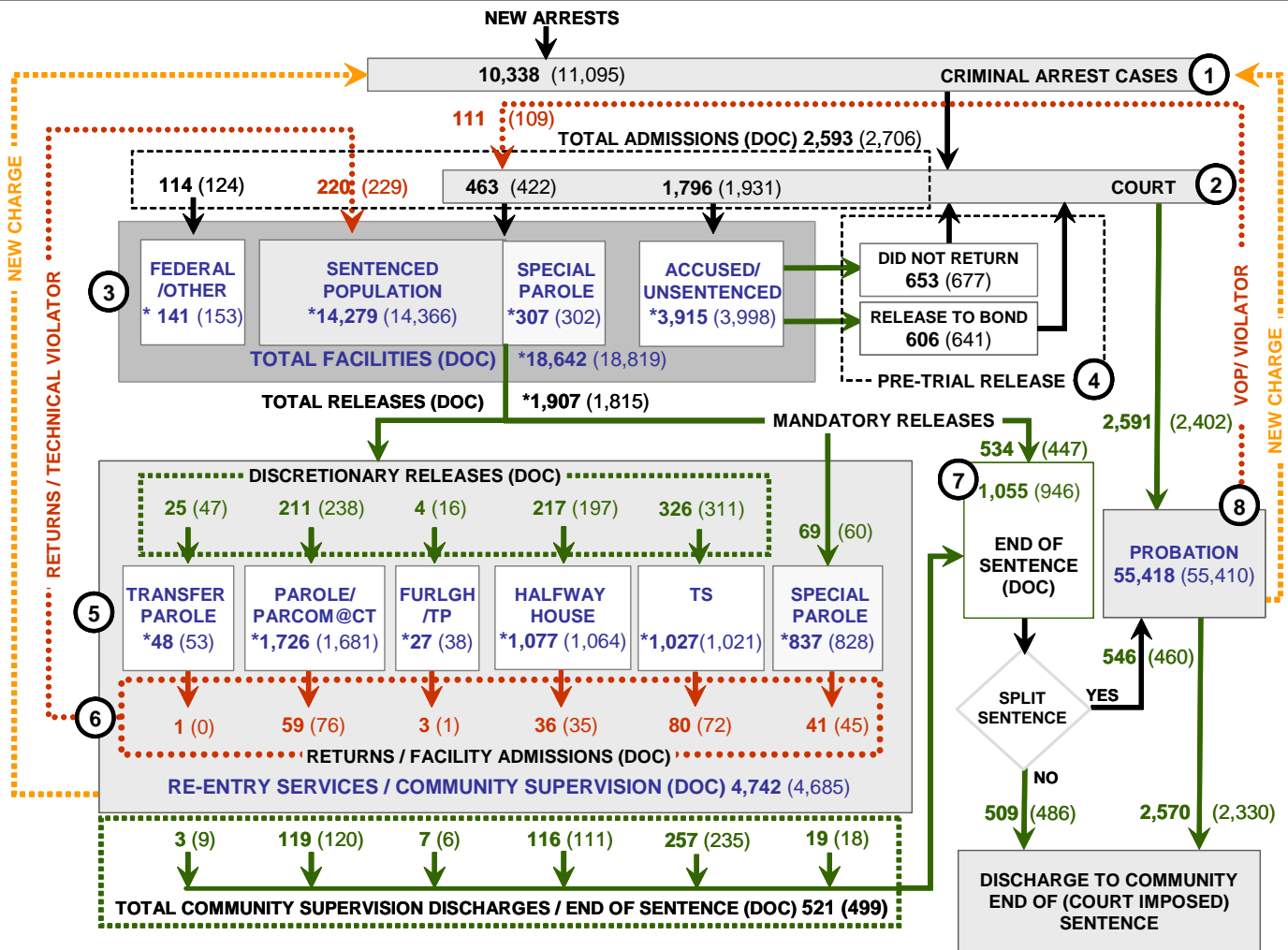


CHART 2 – Connecticut Criminal Justice System Overview



Asterisks (*) indicate the single-day population count on November 1, 2009.
 Numbers enclosed by parentheses contain the figure for the previous month.
 Data shown for New Split Sentence Probationer is only approximate due to processing difficulties.
 Sources: Arrest-Judicial/Court Operations; Court-Judicial/CSSD; Facility/Community Supervision-DOC

Unlike states that have county governments, the majority of agencies within Connecticut's criminal justice system are State agencies. The one exception is law enforcement, where there are over 90 local police departments and the Connecticut State Police.

- 1) **Arrest:** An individual enters into the criminal justice system at the time of arrest.
- 2) **Court:** During arraignment, judges review the charges filed against the accused and set a bail amount. Individuals who cannot meet the conditions of bail are placed in DOC facilities to await trial. If the defendant is convicted they may be sentenced to serve a period of probation, a term of incarceration or some other sanction.
- 3) **DOC Facilities:** Total facility population at DOC contains the unsentenced population, which is awaiting trial, the sentenced population, inmates on special parole, and individuals charged in federal cases or non-state cases.
- 4) **Pre-Trial Release:** Some defendants who are incarcerated pending the disposition of their cases may be eligible for a bond reduction or placement into pre-trial diversionary programs or treatment programs. These programs feature close coordination and cooperation between DOC, CSSD and the Department of Mental Health and Addiction Services (DMHAS).
- 5) **Re-Entry Services:** Depending on several factors, an inmate may be eligible to complete a portion of his/her prison sentences under supervision of the DOC's Parole and Community Services Unit. Non-violent Inmates with sentences shorter than two years are eligible for Transitional Supervision after serving 50% of their sentences. Inmates serving sentences longer than two years may be eligible for parole.
- 6) **Returns:** Offenders who violate the conditions of their community release may be returned to prison to serve out the remainder of their sentences.
- 7) **End of Sentence:** At the end of their sentences some offenders are required to complete a period of post-release supervision. Split-sentence offenders enter probation where they are monitored by CSSD personnel. Offenders sentenced to special parole remain under DOC supervision.
- 8) **Violation of Probation:** If an individual violates the terms of their probation, an arrest warrant is issued and the violator is returned to court.

TABLE 2 – Snapshot of Month DOC Population Counts

| | 2009 | | | 2008 | % Change | |
|--------------------------|---------------|---------------|---------------|---------------|--------------|--------------|
| | Sept. 1st | Oct. 1st | Nov. 1st | Nov. 1st | Monthly | Annual |
| DOC Facility | | | | | | |
| Federal/Other | 161 | 153 | 141 | 134 | -7.8% | 5.2% |
| Sentenced | 14,441 | 14,366 | 14,279 | 15,042 | -0.6% | -5.1% |
| Special Parole | 303 | 302 | 307 | 341 | 1.7% | -10.0% |
| Accused/Unsentenced | 3,969 | 3,998 | 3,915 | 3,924 | -2.1% | -0.2% |
| Total | 18,874 | 18,819 | 18,642 | 19,441 | -0.9% | -4.1% |
| DOC Community | | | | | | |
| Transfer Parole | 43 | 53 | 48 | 65 | -9.4% | -26.2% |
| Parole/ Parcom Total | 1,647 | 1,681 | 1,726 | 1,244 | 2.7% | 38.7% |
| Parole | 1,480 | 1,519 | 1,562 | 1,182 | 2.8% | 32.1% |
| Parcom @ CT | 167 | 162 | 164 | 162 | 1.2% | 1.2% |
| Furlgh/Trans Place Total | 35 | 38 | 27 | 1 | -28.9% | - |
| Furlough | 0 | 0 | 0 | 0 | - | - |
| Trans Placement | 35 | 38 | 27 | 1 | -28.9% | - |
| Halfway House Total | 1,046 | 1,064 | 1,077 | 1,228 | 1.2% | -12.3% |
| Comm Release | 874 | 869 | 899 | 944 | 3.5% | -4.8% |
| TS | 71 | 75 | 56 | 159 | -25.3% | -64.8% |
| Parole | 58 | 70 | 70 | 75 | 0.0% | -6.7% |
| Transfer Placement | 0 | 0 | 0 | 0 | - | - |
| Special Parole | 43 | 49 | 52 | 50 | 6.1% | 4.0% |
| TS Total | 1,019 | 1,021 | 1,027 | 903 | 0.6% | 13.7% |
| Special Parole | 838 | 828 | 837 | 723 | 1.1% | 15.8% |
| Total | 4,628 | 4,685 | 4,742 | 4,164 | 1.2% | 13.9% |

TABLE 3 – Total DOC Admissions and Releases by Month

| | 2009 | | | 2008 | % Change | |
|---------------------|--------------|--------------|--------------|--------------|--------------|--------------|
| | July | August | Sept. | Sept. | Monthly | Annual |
| Admissions | | | | | | |
| Federal/Other | 124 | 124 | 114 | 106 | -8.1% | 7.5% |
| Returns | 236 | 229 | 220 | 239 | -3.9% | -7.9% |
| Transfer Parole | 0 | 0 | 1 | 0 | - | - |
| Parole | 75 | 76 | 59 | 51 | -22.4% | 15.7% |
| Trans Plac/Furlough | 1 | 1 | 3 | 0 | - | - |
| HWH | 38 | 35 | 36 | 52 | 2.9% | -30.8% |
| TS | 86 | 72 | 80 | 94 | 11.1% | -14.9% |
| Special Parole | 36 | 45 | 41 | 42 | -8.9% | -2.4% |
| New Sentence | 390 | 422 | 463 | 449 | 9.7% | 3.1% |
| VOP | 118 | 109 | 111 | 133 | 1.8% | -16.5% |
| Accused | 2,066 | 1,931 | 1,796 | 2041 | -7.0% | -12.0% |
| Total | 2,816 | 2,706 | 2,593 | 2,835 | -4.2% | -8.5% |
| Releases | | | | | | |
| Transfer Parole | 29 | 47 | 25 | 8 | -46.8% | 212.5% |
| Parole | 218 | 238 | 211 | 136 | -11.3% | 55.1% |
| Trans Plac/Furlough | 10 | 16 | 4 | 1 | -75.0% | - |
| HWH | 191 | 197 | 217 | 188 | 10.2% | 15.4% |
| TS | 312 | 311 | 326 | 349 | 4.8% | -6.6% |
| Special Parole | 55 | 60 | 69 | 68 | 15.0% | 1.5% |
| End of Sentence | 826 | 946 | 1,055 | 1,128 | 11.5% | -6.5% |
| Total | 1,641 | 1,815 | 1,907 | 1,878 | 5.1% | 1.5% |

*Measured by occurrence, not by individual.

Parole

Paroles Granted During October: 229

The Board considered 278 parole cases at full panel hearings during October. In 229 cases, offenders were granted parole dates; in 49 cases, parole was denied. In addition there were 84 parole violation hearings, resulting in 66 re-paroles (55 revocations and 11 rescissions).

TABLE 4A –Paroles Granted, October 2009

| | Hearings | Granted | Rate |
|-----|----------|---------|------|
| AUG | 282 | 237 | 84% |
| SEP | 240 | 204 | 85% |
| OCT | 278 | 229 | 82% |

Data Notes: Figures are based on actual data available at the time of this report. Subsequent reports may not agree.

Parole hearings are typically held six months prior to an offender's parole eligibility date. An offender may be released to parole on their first eligibility date or a later time. As a result, the time between parole being granted and the offender being released to parole may take longer than six months.

Transfer Parole Approval Rate: 23%.

In October, 270 cases were reviewed for transfer parole: 62 cases were approved, 130 cases were denied, and 78 were continued.

TABLE 4B –Transfer Paroles, Sept. '09

| | Reviewed | Granted | Denied | Continued | Rate |
|-----|----------|---------|--------|-----------|------|
| AUG | 312 | 74 | 153 | 85 | 24% |
| SEP | 272 | 55 | 156 | 61 | 20% |
| OCT | 270 | 62 | 130 | 78 | 23% |

Probation

Total number sentenced offenders placed on probation in October: 2,591 (See Chart 2).

TABLE 5 – Monthly CSSD Direct Sentenced & Probationer Community Placements

| | Community Based | Out-patient | Inpatient/ Resident | Total |
|-----|-----------------|-------------|---------------------|-------|
| JUL | 1,277 | 789 | 34 | 2,100 |
| AUG | 1,334 | 935 | 24 | 2,292 |
| SEP | 1,297 | 1,041 | 20 | 2,358 |

Data Notes: August data for Community Placements was not available when this report was produced. Figures are based on the latest data available at publication time. Figures in subsequent issues may not agree with those published here.

Pre-trial Diversion and Supervision

TABLE 6 – Pre-trial Diversion & Supervision

| | Pre-trial Bail Case Starts | Client Supv. Starts |
|-----|----------------------------|---------------------|
| AUG | 2,792 | 2,386 |
| SEP | 2,567 | 2,402 |
| OCT | 2,676 | 2,591 |

CHART 3 – Snapshot Daily DOC Facility Population
November 1, 2009 to November 7, 2009

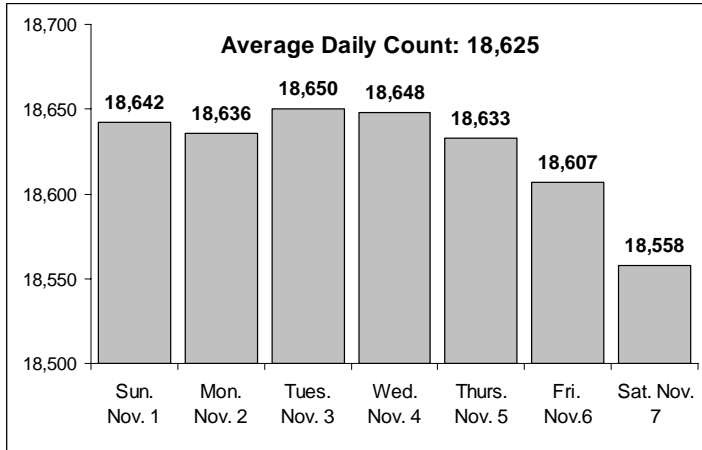


CHART 6 – Monthly DOC Admissions by Type
November 2008 to October 2009

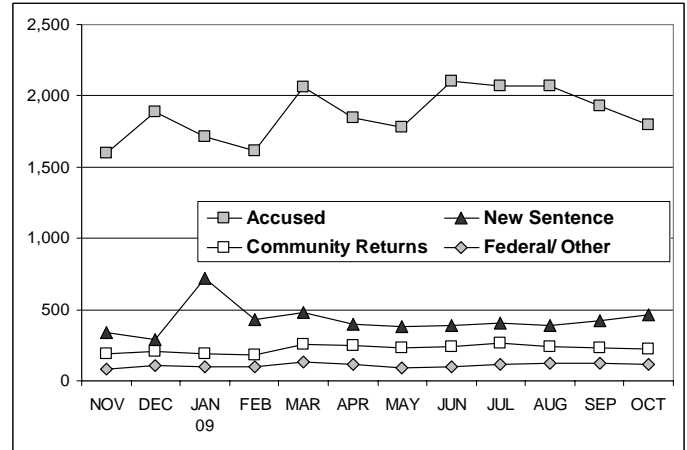


CHART 4 – Snapshot Monthly DOC Prison Population
January 1 through December 1 (Calendar Year)

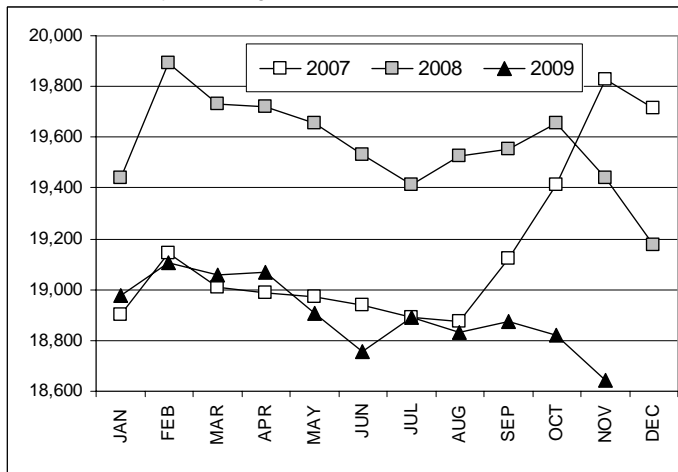


CHART 7 – Monthly Readmissions from Community Release Programs - October 2009

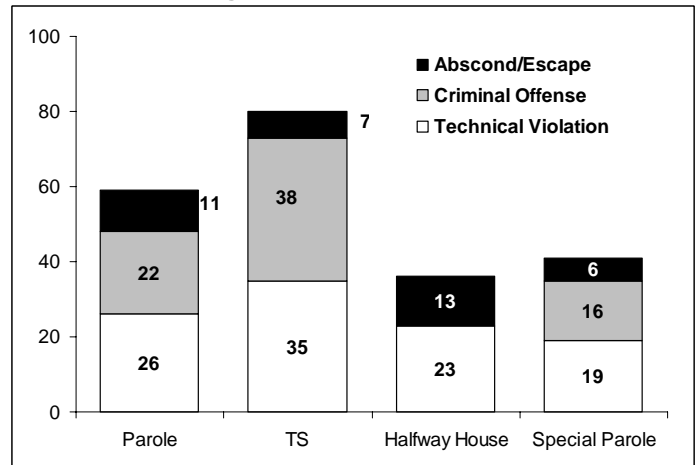


CHART 5 – Prison Population in DOC facilities
January 1999 to November 2009

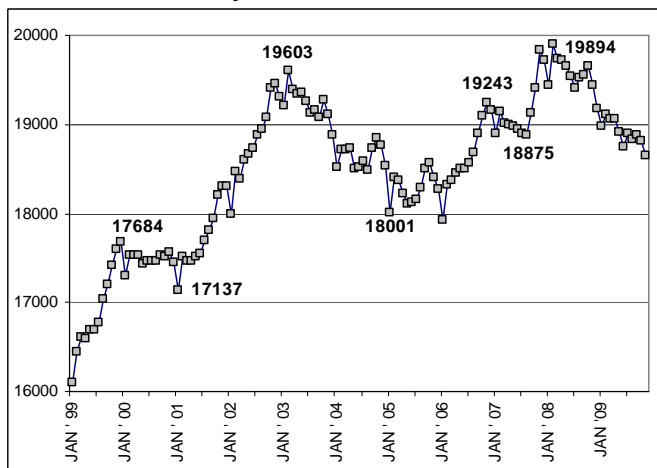
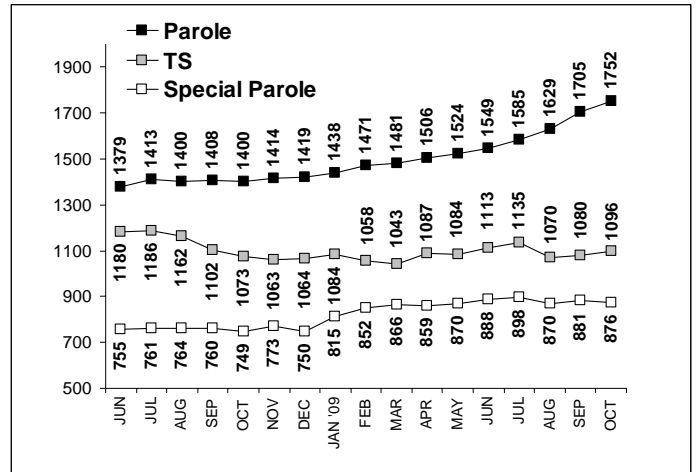


CHART 8 – Snapshot Monthly Parole, TS and Special Parole
June 1, 2008 to November 1, 2009



Data for charts 3 through 8 were provided by CT DOC