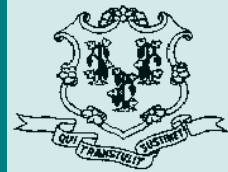


Criminal Justice Policy & Planning Division Monthly Indicators Report



Monthly Indicators are available online at: www.ct.gov/OPM/CriminalJustice/Research

Highlights

- After four months of steady increases, the prison population declined during September. The prisoner count on the first of this month stood at 18,481: last month it was 18,593.
- Total prison admittances declined by 377 during September when compared to the August admit-level. During September, the number of prisoner releases and discharges increased by 22 (See Table 3).
- September's decline in the prison population was influenced by several factors. Perhaps most importantly, the number of accused and unsentenced prisoner admits declined by 16%, falling to 1,755 from the August total of 2,098 (See Chart 2).
- The number of sentenced offenders incarcerated on October 1, 2010 in Connecticut (13,780 inmates) dropped to its lowest level since January 1, 2006 (see Chart 5). The sentenced-prisoner population has dropped 4% since October 1, 2009, when 14,366 sentenced-prisoners were incarcerated. The count is down by 8% compared to the October 1, 2008 figure, when the sentenced-prisoner population was 15,005.

CJPAC's Research Workgroup continues to meet on a regular, monthly basis. Recently, Workgroup participants from DHMAS, CSSD and DOC have established a steering committee for a project to merge, maintain and share data from various state criminal justice agencies.

Prison Population Forecast

The state's prison population declined significantly during the past month. The average daily inmate count (ADC) for the first seven days of the month fell from 18,555 in September to 18,452 in October. The October ADC was within 0.2% of OPM's February estimate.

The state's prison population and OPM's February 2010 prison population forecast closed to within half a percentage point in October, as the estimated population values peaked and the actual prison count declined (See Chart 1). The discrepancy between projected and actual numbers was largely attributed to slower-than-expected release rates for accused offenders who were incarcerated during the summer.

TABLE 1 –Prison Population Forecast

	Actual (*Avg Daily Count)	OPM 2010 Forecast	Difference
FEB '10	18,414*	-	-0.1%
MAR	18,309*	18,332	0.12%
APR	18,300*	18,281	-0.10%
MAY	18,265*	18,161	-0.57%
JUN	18,352*	18,156	-1.07%
JUL	18,444*	18,155	-1.6%
AUG	18,500*	18,180	-1.7%
SEP	18,555*	18,323	-1.2%
OCT	18,452*	18,411	-0.2%
NOV	-	18,305	
DEC	-	18,129	
JAN '11	-	17,738	
FEB	-	18,009	

* Average Daily Count, first week of month

OPM's Criminal Justice Policy & Planning Division (CJPPD) continues to stand by its 2010 forecast that projected the inmate count to dip below 18,000 in the coming months. With the end of summer, the prison population is expected to track in alignment with historical, seasonal patterns.

CHART 1 – Total DOC Facility Population, Actual and Projected
January 1, 2009 through February 1, 2011

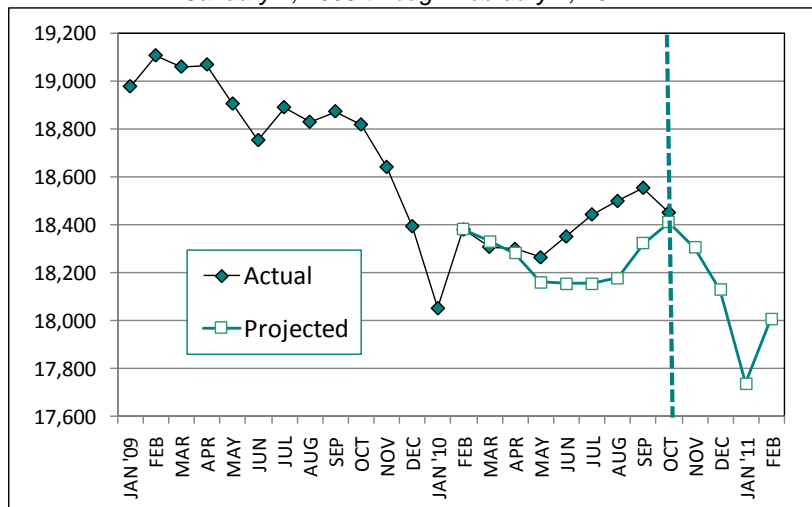
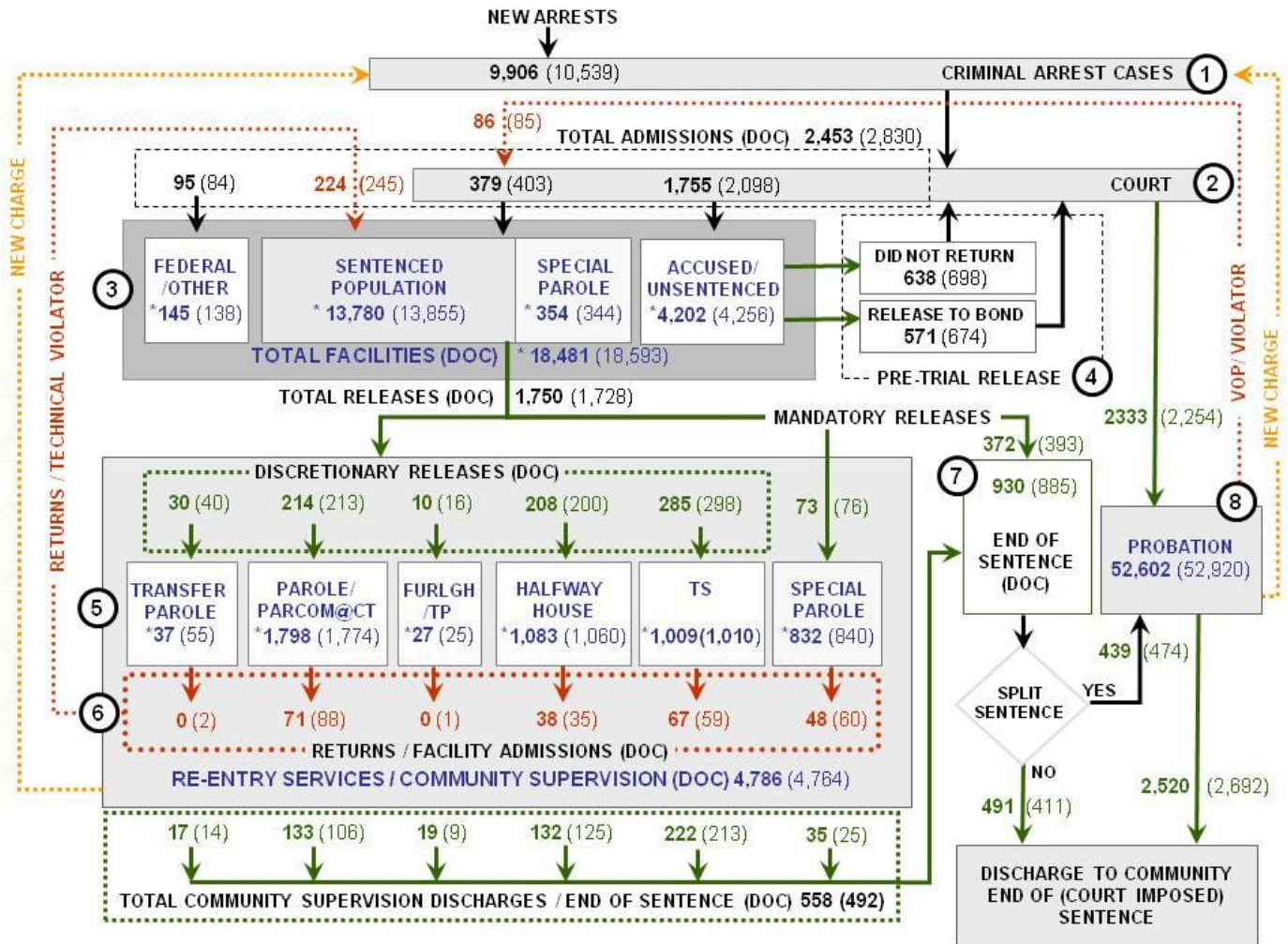


CHART 2 – Connecticut Criminal Justice System – Monthly Overview



Asterisks (*) indicate the population count on October 1, 2010.
 Parentheses enclose figures for the previous month.

Sources: Arrest-Judicial/Court Operations; Court-Judicial/CSSD; Facility/Community Supervision-DOC

Unlike states that have county governments, the majority of agencies within Connecticut's criminal justice system are State agencies. The one exception is law enforcement, where there are over 90 local police departments and the Connecticut State Police.

- 1) Arrest:** An individual enters into the criminal justice system at the time of arrest.
- 2) Court:** At arraignment, judges review the charges filed against the accused and set a bail amount. Individuals who cannot meet bail conditions are incarcerated in DOC facilities to await trial. If the defendant is convicted, they may be sentenced to a range of sanctions including a fine, probation, or a term of incarceration.
- 3) DOC Facilities:** Total facility population at DOC contains the unsentenced population, which is awaiting trial, the sentenced population, inmates who have returned from special parole, and offenders charged in federal cases or non-state cases.
- 4) Pre-Trial Release:** Some defendants who are incarcerated pending the disposition of their cases may be eligible for a bond reduction or placement into pre-trial diversionary programs or treatment programs. These programs feature close coordination and cooperation between DOC, CSSD and the Department of Mental Health and Addiction Services (DMHAS).
- 5) Re-Entry Services:** Depending on several factors, an inmate may be eligible to complete a portion of his/her prison sentence under supervision of the DOC's Parole and Community Services Unit. Non-violent Inmates with sentences shorter than two years are eligible for Transitional Supervision after serving 50% of their sentences. Inmates serving sentences longer than two years may be eligible for parole.
- 6) Returns:** Offenders who violate the conditions of their community release may be returned to prison to complete the remainder of their sentences.
- 7) End of Sentence (EOS):** At the end of their sentences some offenders are required to complete a period of post-release supervision. Split-sentence offenders are supervised by the Judicial Branch's Office of Adult Probation. Offenders sentenced to special parole remain under DOC supervision.
- 8) Violation of Probation:** If an individual violates the terms of their probation, an arrest warrant must be issued, and the violator's case is returned to court.

TABLE 2 – DOC Population Counts, First of the Month

	2010	2010	2010	2009	% Change	
	Aug. 1st	Sept 1st	Oct. 1st	Oct. 1st	Monthly	Annual
DOC Facility						
Federal/Other	155	138	145	153	4.8%	-5.2%
Sentenced	13,898	13,855	13,780	14,366	-0.5%	-4.1%
Special Parole	323	344	354	302	2.8%	17.2%
Accused/Unsentenced	4,114	4,256	4,202	3,998	-1.3%	5.1%
Total	18,490	18,593	18,481	18,819	-0.6%	-1.8%
DOC Community						
Transfer Parole	43	55	37	53	-48.6%	-30.2%
Parole/ Parcom Total	1,761	1,774	1,798	1,681	1.3%	7.0%
Parole	1,599	1,603	1,625	1,519	1.4%	7.0%
Parcom @ CT	162	171	173	162	1.2%	6.8%
Furlgh/Trans Place Total	17	25	27	38	7.4%	-28.9%
Furlough	4	6	5	0	-20.0%	-
Trans Placement	13	19	22	38	13.6%	-42.1%
Halfway House Total	1,101	1,060	1,083	1,064	2.1%	1.8%
Comm Release	919	883	905	869	2.4%	4.1%
TS	16	13	10	75	-30.0%	-86.7%
Parole	88	85	83	70	-2.4%	18.6%
Transfer Parole	1	2	2	1	-	-
Special Parole	77	77	83	49	7.2%	69.4%
TS Total	982	1,010	1,009	1,021	-0.1%	-1.2%
Special Parole	837	840	832	828	-1.0%	0.5%
Total	4,741	4,764	4,786	4,685	0.5%	2.2%

TABLE 3 – DOC Admissions and Releases, Monthly Totals

	2010	2010	2010	2009	% Change	
	July	August	Sept.	Sept.	Monthly	Annual
Admissions						
Federal/Other	90	84	95	124	13.1%	-23.4%
Returns	217	245	224	229	-8.6%	-2.2%
Transfer Parole	3	2	0	0	-	-
Parole	72	88	71	76	-19.3%	-6.6%
Trans Plac/Furlough	0	1	0	1	-	-
HWH	38	35	38	35	8.6%	8.6%
TS	66	59	67	72	13.6%	-6.9%
Special Parole	38	60	48	45	-20.0%	6.7%
New Sentence	358	403	379	422	-6.0%	-10.2%
VOP	90	85	86	109	1.2%	-21.1%
Accused	2,091	2,098	1,755	1,931	-16.3%	-9.1%
Total	2,756	2,830	2,453	2,706	-13.3%	-9.3%
Releases						
Transfer Parole	23	40	30	47	-25.0%	-36.2%
Parole	180	213	214	238	0.5%	-10.1%
Trans Plac/Furlough	12	16	10	16	-37.5%	-37.5%
HWH	229	200	208	197	4.0%	5.6%
TS	292	298	285	311	-4.4%	-8.4%
Special Parole	61	76	73	60	-3.9%	21.7%
End of Sentence	948	885	930	946	5.1%	-1.7%
Total	1,745	1,728	1,750	1,815	1.3%	-3.6%
Pre-trial Releases*						
Did not return from Court	653	698	638	677	-8.6%	-5.8%
Release to Bond	703	674	571	641	-15.3%	-10.9%

*Measured by occurrence, not by individual.

Parole

Paroles and Parole hearings

The Board considered 269 parole cases at full panel hearings in September. In addition, the Board considered an additional 131 parole violation cases. Ninety-three (93) of these cases resulted in offenders being reparaed; 75 cases had been revocations; 18 had been rescissions.

TABLE 4A –Paroles Granted, Monthly

	Hearings	Granted	Rate
JULY	252	196	78%
AUG	283	231	82%
SEPT	269	213	79%

Data Notes: Figures are based on the data available at the time of this report. Data in subsequent issues may not agree.

The Board of Pardons and Paroles schedules parole hearing dates up to 18 months before an offender's eligibility date. This should allow the Board to have a greater impact on offender programming while the offender remains incarcerated. It should also provide DOC with more time to develop appropriate reintegration plans for each parolee. If properly implemented, this change should reduce the number of offenders that are incarcerated beyond their parole eligibility dates.

TABLE 4B –Transfer Parole Activity

	Reviewed	Granted	Denied	Continued	Rate
JUN	318	82	208	28	26%
JULY	269	80	160	29	30%
AUG	274	77	180	17	28%
SEPT	265	78	183	4	29%

Probation

Court Support Services Division caseload for September 2010: 52,602 (August 2010: 52,920)

TABLE 5 – Monthly CSSD Direct Sentenced & Probationer Community Placements

	Community Based	Out-patient	Inpatient/ Resident	Total
JUN	1,491	965	30	2,252
JUL	1,509	911	24	2,444
AUG	1,435	905	30	2,370

Data Notes: Figures are based on the latest data available at publication time. Figures in subsequent issues may not agree with those published here.

Pre-trial Diversion and Supervision

TABLE 6 – Pre-trial Diversion & Supervision

	Pre-trial Bail Case Starts	Client Supv. Starts
JULY	2,797	2,205
AUG	2,774	2,254
SEPT	2571	2333

CHART 3 – Snapshot Daily DOC Facility Population
 October 1, 2010 to October 7, 2010

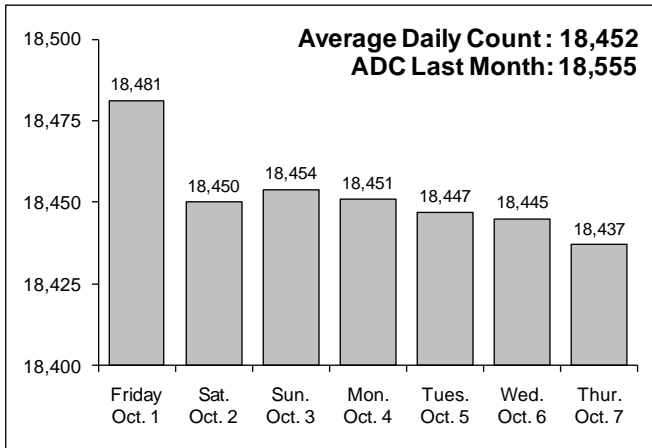


CHART 6 – Monthly DOC Admissions by Type
 August 2009 to September 2010

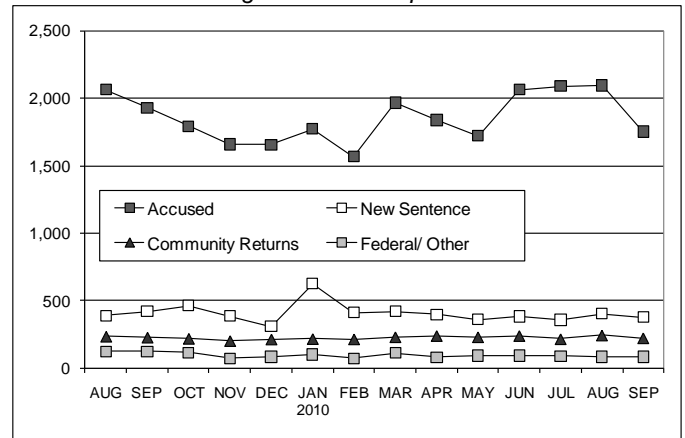


CHART 4 – Prison Population, first-of-month
 January 1 through December 1, Calendar Year

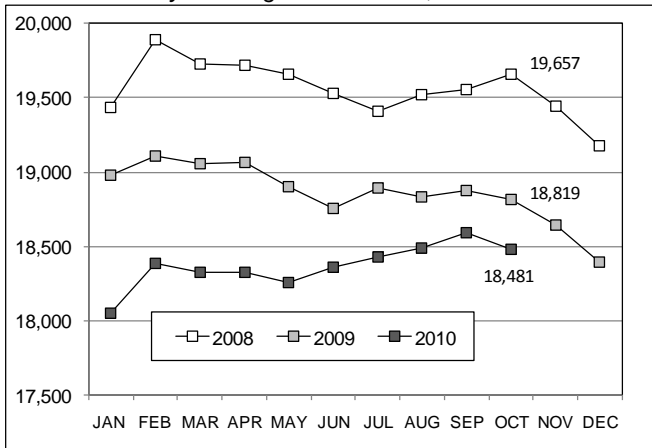


CHART 7 – Monthly Readmissions from Community Release
 September 2010

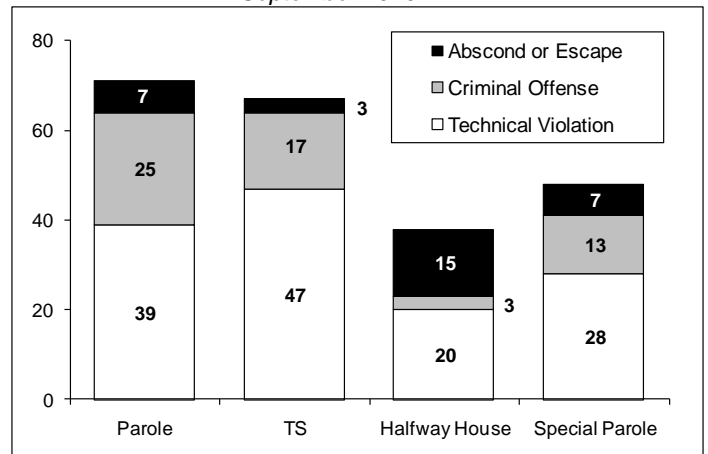


CHART 5 – The sentenced prison population
 January 2005 through October 2010

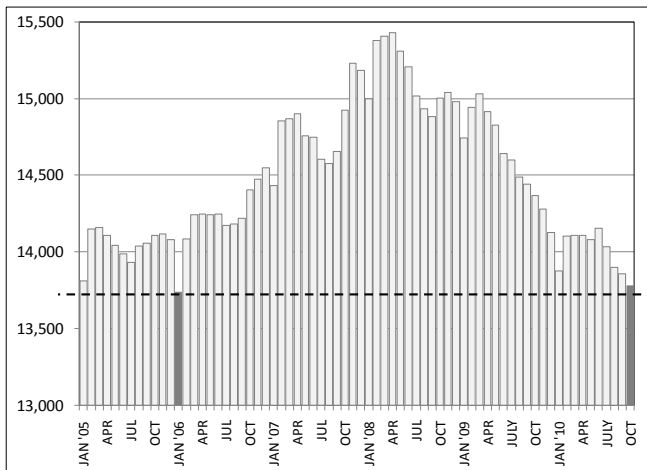
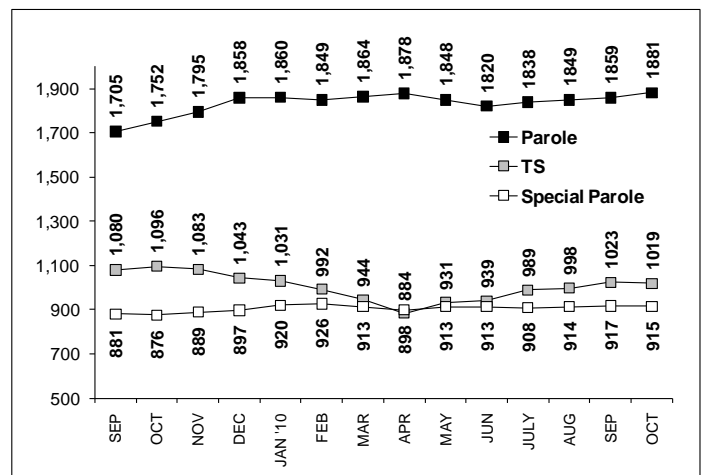


CHART 8 – Parole, TS and Special Parole, supervised cases
 September 1, 2009 to October 1, 2010



Note: Data for all charts was supplied by CT DOC. Data in Chart 8 includes all offenders under parole jurisdiction.