

Criminal Justice Policy & Planning Division Monthly Indicators Report



RESEARCH, ANALYSIS & EVALUATION — WWW.CT.GOV/OPM/CriminalJustice/Research

Highlights

- On New Year's Day, the total inmate count was 18,053. This was 342 lower than the figure for December 1, 2009 and the lowest first-of-the-month total since January 2006.
- Releases through the 45-day prisoner re-entry furlough program began on November 10th. During November, 37 furloughs were granted. In December, 75 were granted.
- From November 10 through the end of the year, the number of offenders on furlough status increased by an average of one per day (See Chart 5).
- Over the last year, the prison population has fallen by over 900. No single event or change to any specific system input or output explains this overall decline. It may be illustrative, however, to consider changes in the overall volume of prison admits and releases (See Table 3). When data for Dec. 2009 is compared to data for the same month a year earlier, we see that monthly admittances had declined by 8.9% while releases and discharges increased by 7.9%.
- CJPPD anticipates that the prison population will rise to over the coming month.

CJPPD will publish complete annual data for 2009 for the indicators that appear in this report in its 2010 Prison Population Forecast scheduled for publication in February 2010.

Six Month Prison Population Forecast

The prison population declined by over 300 inmates between December 1, 2009 and January 1, 2010. This drop is consistent with seasonal variations in the prison population. From 2001 through 2008, the average monthly inmate count dropped by 303 between December 1st and the New Year.

In recent years, inmate numbers have rebounded each year between January 1st and February 1st. CJPPD

anticipates that the month of January will feature the first monthly increase in the prison population since June 2009. The prison population has increased, by an average of 328 offenders, during the month of January in each year since 2000.

TABLE 1 –Prison Population Forecast

	2009 Actual (*Avg Daily)	OPM Forecast	Difference
APR	19,040*	19,023	-0.1%
MAY	18,845*	18,849	0.0%
JUN	18,765*	18,866	0.5%
JUL	18,854*	18,913	0.3%
AUG	18,839*	18,937	0.5%
SEP	18,819*	19,070	1.3%
OCT	18,772*	18,908	0.7%
NOV	18,625*	18,787	0.9%
DEC	18,379*	18,667	1.5%
JAN '10	18,081*	18,396	1.7%
FEB	-	18,693	
MAR	-	18,681	

* Average Daily Count, first week of the month

CJPPD is currently compiling a new annual projection of the prison population to cover a period from March 2010 through March 2011.

CHART 1 – Total DOC Facility Population, Actual and Projected
January 1, 2008 through March 1, 2010

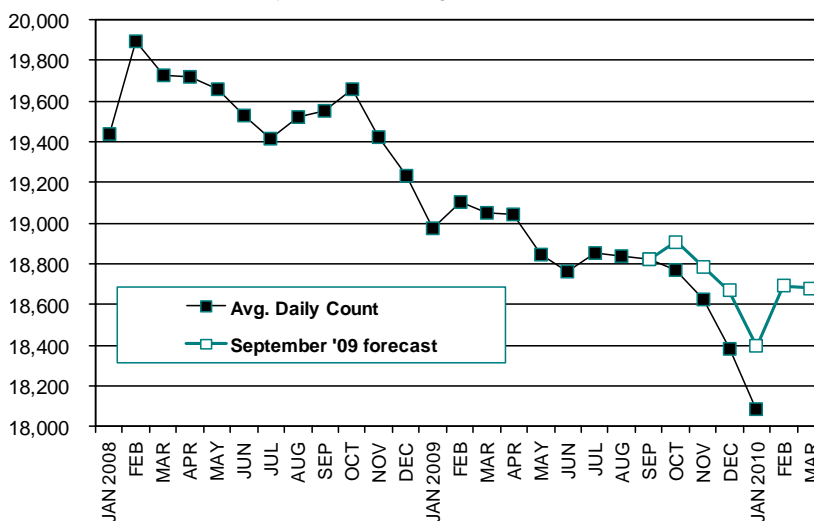
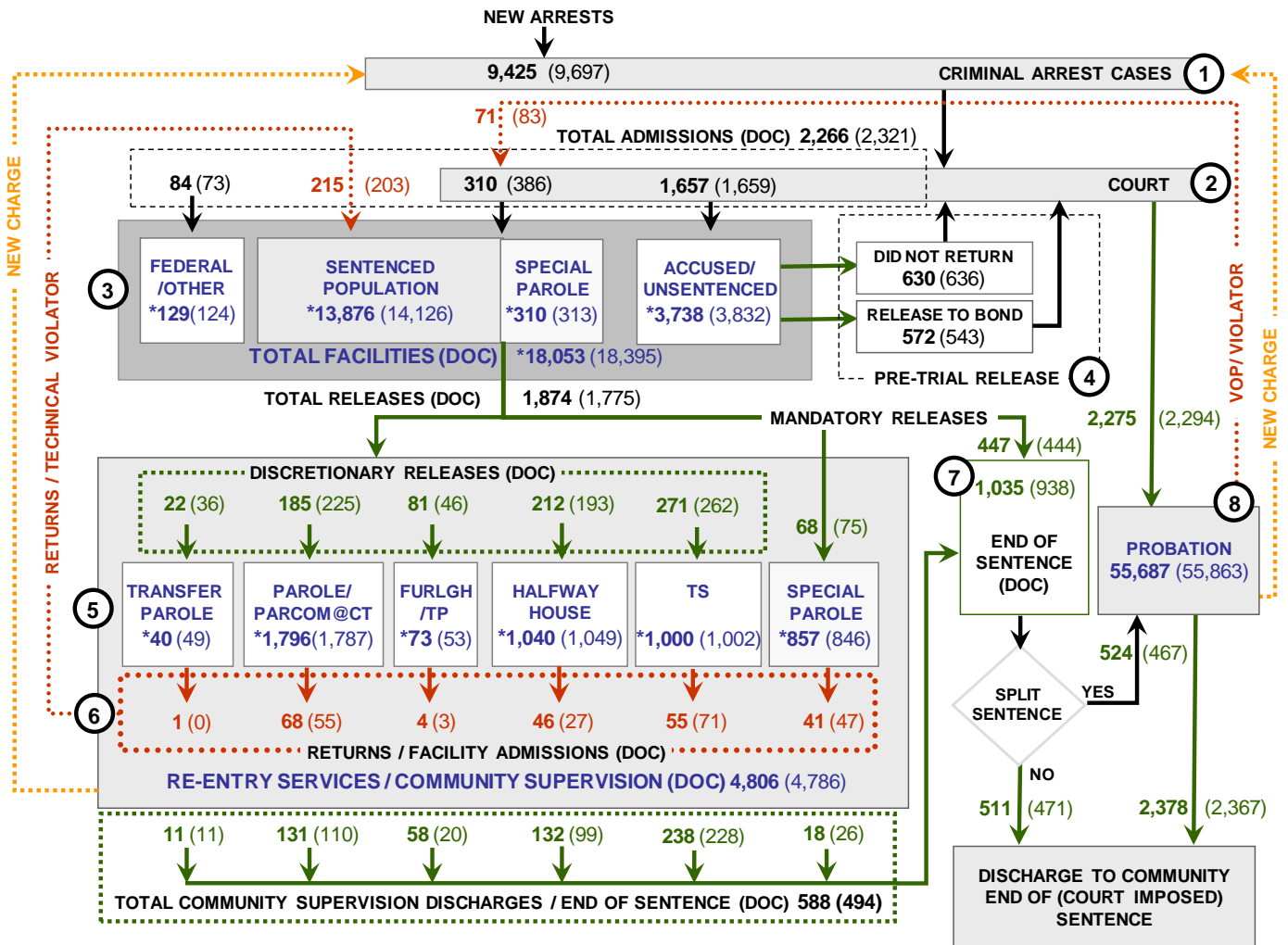


CHART 2 – Connecticut Criminal Justice System – Monthly Overview



Asterisks (*) indicate the single-day population count on January 1, 2010.
 Numbers enclosed by parentheses contain the figure for the previous month.
 Data shown for New Split Sentence Probationer is only approximate due to processing difficulties.
 Sources: Arrest-Judicial/Court Operations; Court-Judicial/CSSD; Facility/Community Supervision-DOC

Unlike states that have county governments, the majority of agencies within Connecticut's criminal justice system are State agencies. The one exception is law enforcement, where there are over 90 local police departments and the Connecticut State Police.

- 1) Arrest:** An individual enters into the criminal justice system at the time of arrest.
- 2) Court:** During arraignment, judges review the charges filed against the accused and set a bail amount. Individuals who cannot meet the conditions of bail are placed in DOC facilities to await trial. If the defendant is convicted they may be sentenced to serve a period of probation, a term of incarceration or some other sanction.
- 3) DOC Facilities:** Total facility population at DOC contains the unsentenced population, which is awaiting trial, the sentenced population, inmates on special parole, and individuals charged in federal cases or non-state cases.
- 4) Pre-Trial Release:** Some defendants who are incarcerated pending the disposition of their cases may be eligible for a bond reduction or placement into pre-trial diversionary programs or treatment programs. These programs feature close coordination and cooperation between DOC, CSSD and the Department of Mental Health and Addiction Services (DMHAS).
- 5) Re-Entry Services:** Depending on several factors, an inmate may be eligible to complete a portion of his/her prison sentences under supervision of the DOC's Parole and Community Services Unit. Non-violent Inmates with sentences shorter than two years are eligible for Transitional Supervision after serving 50% of their sentences. Inmates serving sentences longer than two years may be eligible for parole.
- 6) Returns:** Offenders who violate the conditions of their community release may be returned to prison to serve out the remainder of their sentences.
- 7) End of Sentence:** At the end of their sentences some offenders are required to complete a period of post-release supervision. Split-sentence offenders enter probation where they are monitored by CSSD personnel. Offenders sentenced to special parole remain under DOC supervision.
- 8) Violation of Probation:** If an individual violates the terms of their probation, an arrest warrant is issued and the violator is returned to court.

TABLE 2 – Snapshot of Month DOC Population Counts

	2009			2009	% Change	
	Nov. 1st	Dec. 1st	Jan. 1st	Jan. 1st	Monthly	Annual
DOC Facility						
Federal/Other	141	124	129	135	3.9%	-4.4%
Sentenced	14,279	14,126	13,876	14,745	-1.8%	-5.9%
Special Parole	307	313	310	310	-1.0%	0.0%
Accused/Unsentenced	3,915	3,832	3,738	3,788	-2.5%	-1.3%
Total	18,642	18,395	18,053	18,978	-1.9%	-4.9%
DOC Community						
Transfer Parole	48	49	40	37	-22.5%	8.1%
Parole/ Parcom Total	1,726	1,787	1,796	1,361	0.5%	32.0%
Parole	1,562	1,625	1,642	1,197	1.0%	37.2%
Parcom @ CT	164	162	154	164	-5.2%	-6.1%
Furlgh/Trans Place Total	27	53	73	19	27.4%	284.2%
Furlough	0	24	50	0	-	-
Trans Placement	27	29	23	19	-26.1%	21.1%
Halfway House Total	1,077	1,049	1,040	1,227	-0.9%	-15.2%
Comm Release	899	885	882	927	-0.3%	-4.9%
TS	56	41	31	165	-32.3%	-81.2%
Parole	70	72	64	79	-12.5%	-19.0%
Transfer Placement	0	0	0	0	-	-
Special Parole	52	51	63	56	19.0%	12.5%
TS Total	1,027	1,002	1,000	900	-0.2%	11.1%
Special Parole	837	846	857	759	1.3%	12.9%
Total	4,742	4,786	4,806	4,303	0.4%	11.7%

TABLE 3 – Total DOC Admissions and Releases by Month

	2009			2008	% Change	
	Oct.	Nov.	Dec.	Dec.	Monthly	Annual
Admissions						
Federal/Other	114	73	84	104	15.1%	-19.2%
Returns	220	203	215	206	5.9%	4.4%
Transfer Parole	1	0	1	1	-	-
Parole	59	55	68	64	23.6%	6.3%
Trans Plac/Furlough	3	3	4	0	33.3%	-
HWH	36	27	46	35	70.4%	31.4%
TS	80	71	55	82	-22.5%	-32.9%
Special Parole	41	47	41	24	-12.8%	70.8%
New Sentence	463	386	310	287	-19.7%	8.0%
VOP	111	83	71	81	-14.5%	-12.3%
Accused	1,796	1,659	1,657	1,891	-0.1%	-12.4%
Total	2,593	2,321	2,266	2,488	-2.4%	-8.9%
Releases						
Transfer Parole	25	36	22	13	-38.9%	69.2%
Parole	211	225	185	131	-17.8%	41.2%
Trans Plac/Furlough	4	46	81	13	76.1%	523.1%
HWH	217	193	212	175	9.8%	21.1%
TS	326	262	271	324	3.4%	-16.4%
Special Parole	69	75	68	47	-9.3%	44.7%
End of Sentence	1,055	938	1,035	1,034	10.3%	0.1%
Total	1,907	1,775	1,874	1,737	5.6%	7.9%
Pre-trial Releases*						
Did not return from Court	653	636	630	662	-2.6%	-1.4%
Release to Bond	606	543	572	587	-10.4%	3.2%

*Measured by occurrence, not by individual.

Parole

Paroles Granted During December: 218

The Board considered 281 parole cases at full panel hearings during November. In 218 cases, offenders were granted parole dates; in 63 cases, parole was denied. In addition there were 58 parole violation hearings, resulting in 40 re-paroles (28 revocations and 12 rescissions). One parole was reinstated.

TABLE 4A –Paroles Granted, December 2009

	Hearings	Granted	Rate
OCT	278	229	82%
NOV	279	215	77%
DEC	281	218	78%

Data Notes: Figures are based on the data available at the time of this report. Data in subsequent issues may not agree.

Parole hearings are typically scheduled six months prior to an offender's parole eligibility date. An offender may be released to parole on their first eligibility date or a later time. As a result, the time between parole being granted and the offender being released to parole may take longer than six months.

Transfer Parole Approval Rate: 18%.

Although transfer parole grant rates have remained relatively stable, the number of offenders considered for transfer parole has increased considerably. In December 2008, only 160 transfer parole cases were considered; 32 offenders were granted transfer parole.

TABLE 4B –Transfer Paroles, December 2009

	Reviewed	Granted	Denied	Continued	Rate
OCT	270	62	130	78	23%
NOV	256	58	123	75	23%
DEC	299	53	163	83	18%

Probation

Total Court Support Services Division caseload for December 2009: 55,687

TABLE 5 – Monthly CSSD Direct Sentenced & Probationer Community Placements

	Community Based	Out-patient	Inpatient/ Resident	Total
SEP	1,297	1,041	20	2,358
OCT**	1,449	967	12	2,428
NOV	1,522	765	6	2,293

** October figures have been adjusted by CSSD since last month's Indicators Report

Data Notes: Figures are based on the latest data available at publication time. Figures in subsequent issues may not agree with those published here.

Pre-trial Diversion and Supervision

TABLE 6 – Pre-trial Diversion & Supervision

	Pre-trial Bail Case Starts	Client Supv. Starts
OCT	2,676	2,591
NOV	2,426	2,294
DEC	2,463	2,275

CHART 3 – Snapshot Daily DOC Facility Population
January 1, 2010 to January 7, 2010

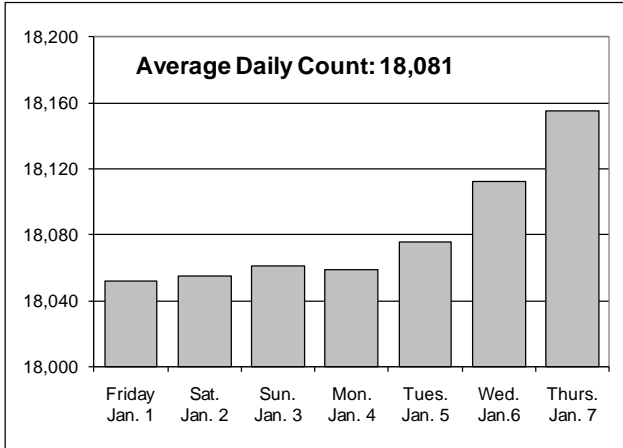


CHART 6 – Monthly DOC Admissions by Type
January 2009 to December 2009

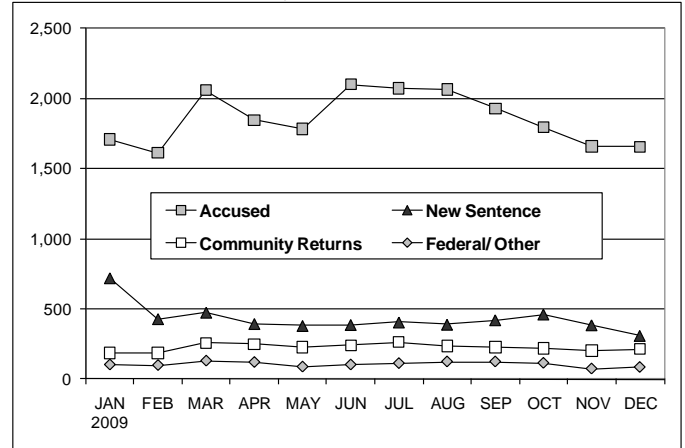


CHART 4 –Monthly Prison Population
January 1 through December 1, Calendar Year

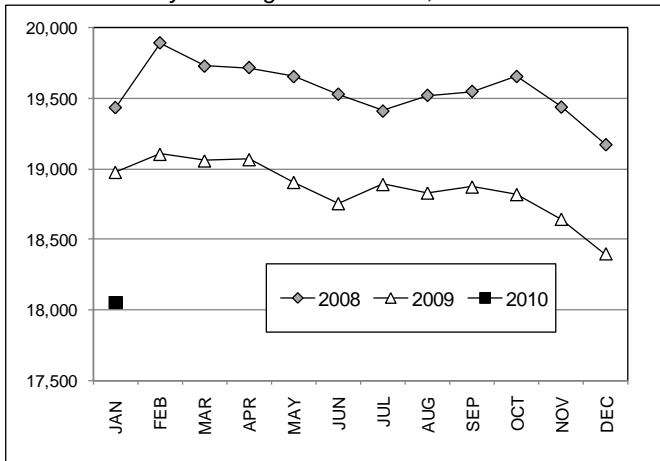


CHART 7 –Monthly Readmissions from Community Release Programs - December 2009

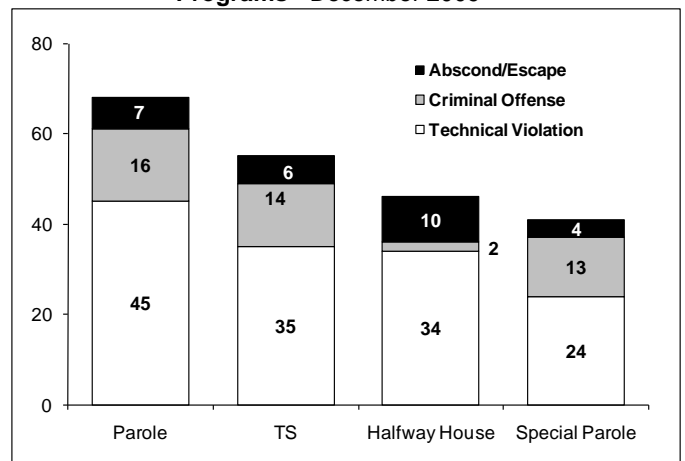


CHART 5 – Offenders on Re-entry Furlough Status
November 10, 2009 to December 31, 2009

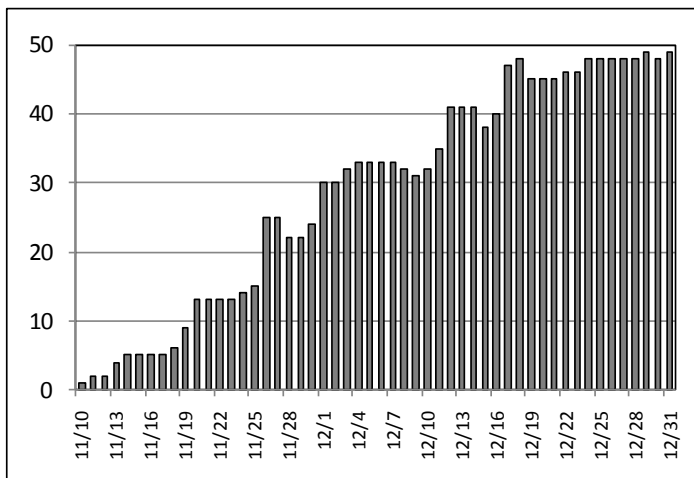
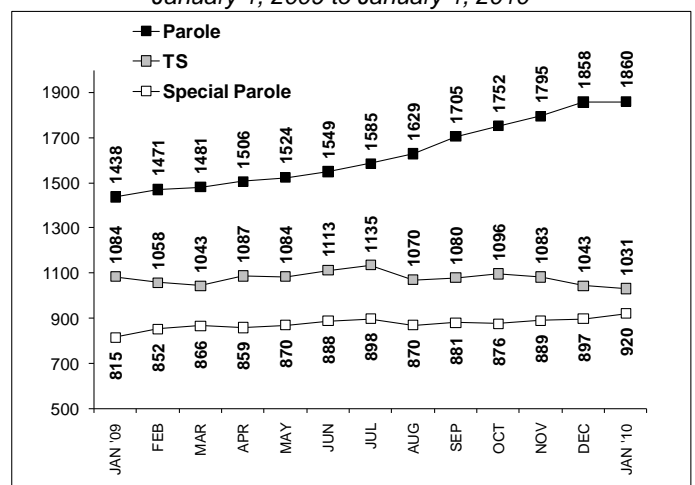


CHART 8 –Parole, TS and Special Parole, supervised cases
January 1, 2009 to January 1, 2010



* Data for charts 3 through 8 were provided by CT DOC
**Data in Chart 8 include all offenders under parole jurisdiction