

# Criminal Justice Policy & Planning Division Monthly Indicators Report



RESEARCH, ANALYSIS & EVALUATION — WWW.CT.GOV/OPM/CriminalJustice/Research

## Highlights

- Following typical seasonal patterns, the prison population declined slightly during February. On February 1, 2010, 18,383 people were incarcerated. By March 1, the prisons held 18,330.
- At 18,330, the prison population was smaller, by 730, than it was on March 1, 2009. The number of sentenced inmates on March 1 was 14,106; 926 fewer than the 15,032 that were incarcerated last year on March 1 (See Table 2).
- The number of offenders released to parole during the month of February was 47.5% higher than it was a year ago, in 2009. In contrast, monthly releases to Transitional Supervision (TS) fell 24% below the February 2009 level (See Table 3).
- The number of criminal arrests has been dropping in recent months. In fact the volume of arrests has fallen in each month since June 2009 (See Chart 5). Although the volume of monthly arrests and crime rates are not directly related, the volume of arrests is a factor in the number of monthly prison admittances. Recent data suggests that approximately one in five arrests results in one prison admittance.

*The CJPAC Research Workgroup will be meeting in March to consider its criminal justice research agenda over the next year. For more information on the Research Workgroup, please visit the OPM website.*

## Six Month Prison Population Forecast

As projected, the prison population declined at a moderate pace between February 1 and March 1. The average daily prison population during the first week of March was 18,309, 105 fewer than in February.

OPM expects the prison population to decrease at a moderate pace over the next few months, settling at a level below 18,200. OPM's model anticipates that the prison population should begin to grow again between July and October.

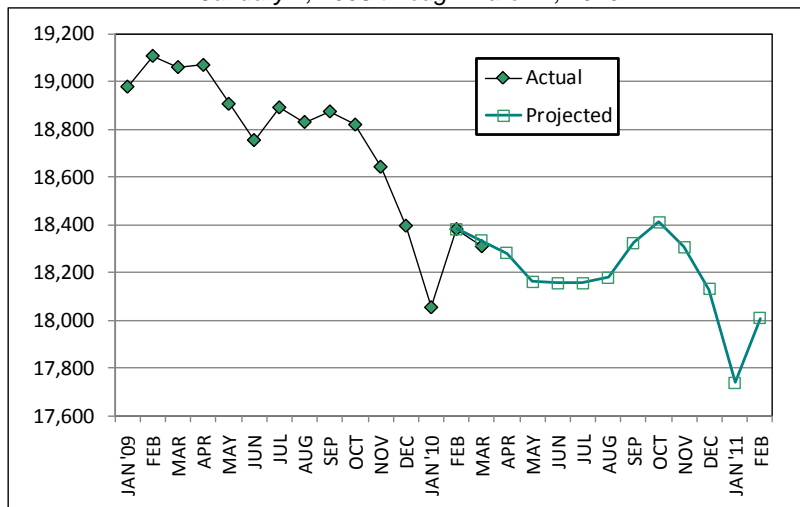
TABLE 1 –Prison Population Forecast

	Actual (*Avg Daily)	OPM 2010 Forecast
FEB '10	18,414*	-
MAR	18,309*	18,332
APR	-	18,281
MAY	-	18,161
JUN	-	18,156
JUL	-	18,155
AUG	-	18,180
SEP	-	18,323
OCT	-	18,411
NOV	-	18,305
DEC	-	18,129
JAN '11	-	17,738
FEB	-	18,009

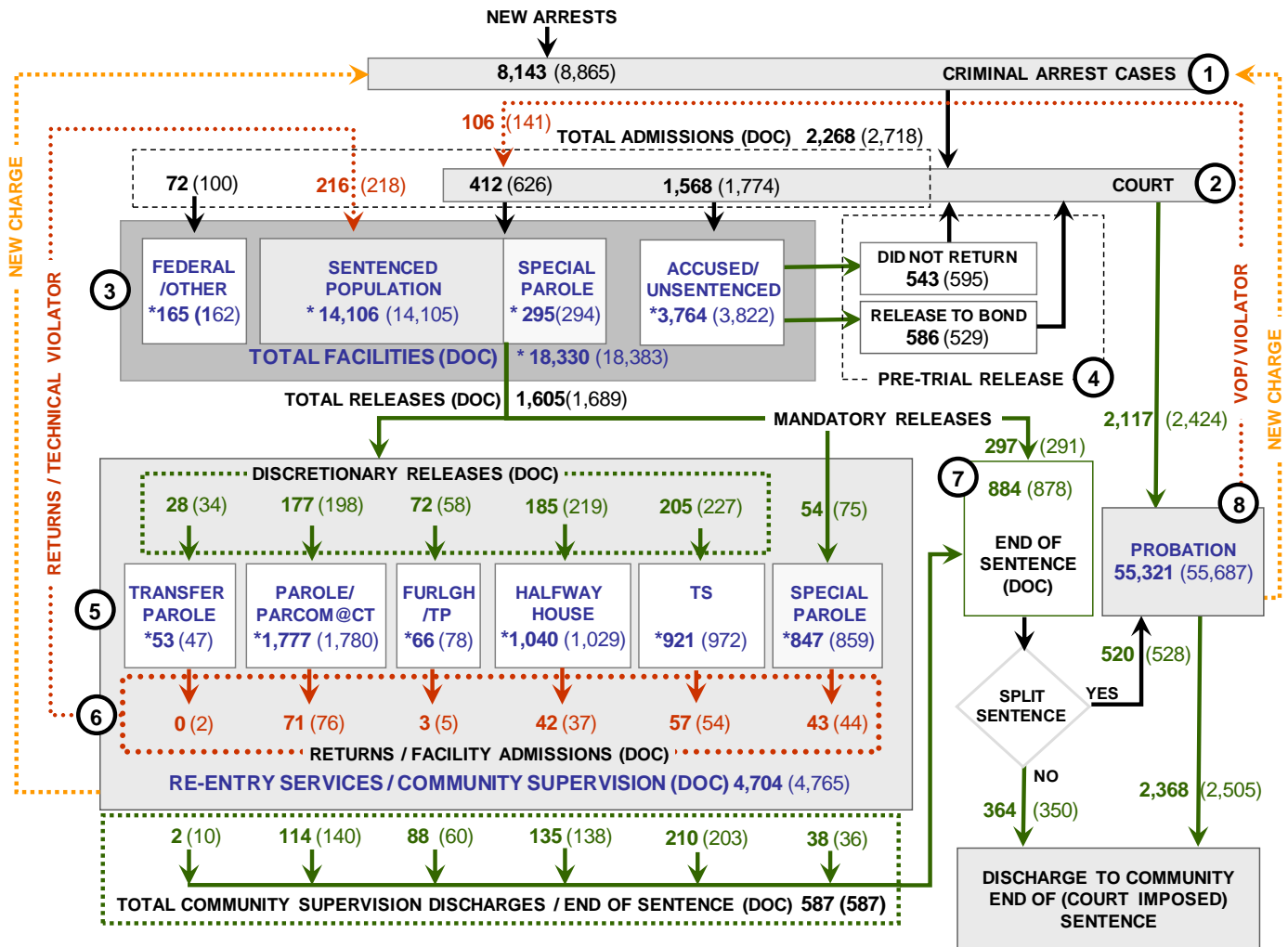
\* Average Daily Count, first week of month

Last year, OPM anticipated an increase in prison admittances during the late summer and early fall. These increases failed to materialize. Prison admittances during the warm-weather months are often driven by increases in statewide arrests. Arrest levels during the summer months are commonly impacted by special police operations, or sweeps, particularly in urban municipalities. These operations often result in scores of new prison admittances, over a short period of time.

CHART 1 – Total DOC Facility Population, Actual and Projected  
January 1, 2008 through March 1, 2010



## CHART 2 – Connecticut Criminal Justice System – Monthly Overview



Asterisks (\*) indicate the single-day population count on March 1, 2010.  
 Numbers enclosed by parentheses contain the figure for the previous month.  
 Data shown for New Split Sentence Probationers is only approximate due to data reconciliation difficulties.  
 Sources: Arrest-Judicial/Court Operations; Court-Judicial/CSSD; Facility/Community Supervision-DOC

Unlike states that have county governments, the majority of agencies within Connecticut's criminal justice system are State agencies. The one exception is law enforcement, where there are over 90 local police departments and the Connecticut State Police.

- 1) Arrest:** An individual enters into the criminal justice system at the time of arrest.
- 2) Court:** At arraignment, judges review the charges filed against the accused and set a bail amount. Individuals who cannot meet bail conditions are incarcerated in DOC facilities to await trial. If the defendant is convicted, they may be sentenced to a range of sanctions including a fine, probation, or a term of incarceration.
- 3) DOC Facilities:** Total facility population at DOC contains the unsentenced population, which is awaiting trial, the sentenced population, inmates who have returned from special parole, and offenders charged in federal cases or non-state cases.
- 4) Pre-Trial Release:** Some defendants who are incarcerated pending the disposition of their cases may be eligible for a bond reduction or placement into pre-trial diversionary programs or treatment programs. These programs feature close coordination and cooperation between DOC, CSSD and the Department of Mental Health and Addiction Services (DMHAS).
- 5) Re-Entry Services:** Depending on several factors, an inmate may be eligible to complete a portion of his/her prison sentence under supervision of the DOC's Parole and Community Services Unit. Non-violent Inmates with sentences shorter than two years are eligible for Transitional Supervision after serving 50% of their sentences. Inmates serving sentences longer than two years may be eligible for parole.
- 6) Returns:** Offenders who violate the conditions of their community release may be returned to prison to complete the remainder of their sentences.
- 7) End of Sentence (EOS):** At the end of their sentences some offenders are required to complete a period of post-release supervision. Split-sentence offenders are supervised by the Judicial Branch's Office of Adult Probation. Offenders sentenced to special parole remain under DOC supervision.
- 8) Violation of Probation:** If an individual violates the terms of their probation, an arrest warrant must be issued, and the violator's case is returned to court.

TABLE 2 –DOC Population Counts, First of the Month

	2010	2010	2010	2009	% Change	
	Jan. 1st	Feb. 1st	Mar. 1st	Mar. 1st	Monthly	Annual
<b>DOC Facility</b>						
Federal/Other	129	162	165	141	1.8%	17.0%
Sentenced	13,876	14,105	14,106	15,032	0.0%	-6.2%
Special Parole	310	294	295	275	0.3%	7.3%
Accused/Unsentenced	3,738	3,822	3,764	3,612	-1.5%	4.2%
<b>Total</b>	<b>18,053</b>	<b>18,383</b>	<b>18,330</b>	<b>19,060</b>	<b>-0.3%</b>	<b>-3.8%</b>
<b>DOC Community</b>						
Transfer Parole	40	47	53	59	11.3%	-10.2%
Parole/ Parcom Total	1,796	1,780	1,777	1,402	-0.2%	26.7%
Parole	1,642	1,637	1,628	1,237	-0.6%	31.6%
Parcom @ CT	154	143	149	165	4.0%	-9.7%
Furlgh/Trans Place Total	73	78	66	33	-18.2%	100.0%
Furlough	50	54	41	0	-31.7%	-
Trans Placement	23	24	25	33	4.0%	-24.2%
Halfway House Total	1,040	1,029	1,040	1,200	1.1%	-13.3%
Comm Release	882	873	864	888	-1.0%	-2.7%
TS	31	20	23	169	13.0%	-86.4%
Parole	64	69	87	77	20.7%	13.0%
Transfer Placement	0	0	0	0	-	-
Special Parole	63	67	66	64	-1.5%	3.1%
TS Total	1,000	972	921	874	-5.5%	5.4%
Special Parole	857	859	847	802	-1.4%	5.6%
<b>Total</b>	<b>4,806</b>	<b>4,765</b>	<b>4,704</b>	<b>4,370</b>	<b>-1.3%</b>	<b>7.6%</b>

TABLE 3 – DOC Admissions and Releases, Monthly Totals

	2009	2010	2010	2009	% Change	
	Dec.	Jan.	Feb.	Feb.	Monthly	Annual
<b>Admissions</b>						
Federal/Other	84	100	72	98	-28.0%	-26.5%
Returns	215	218	216	186	-0.9%	16.1%
Transfer Parole	1	2	0	2	-100.0%	-
Parole	68	76	71	43	-6.6%	65.1%
Trans Plac/Furlough	4	5	3	1	-40.0%	-
HWH	46	37	42	52	13.5%	-19.2%
TS	55	54	57	62	5.6%	-8.1%
Special Parole	41	44	43	28	-2.3%	53.6%
New Sentence	310	626	412	430	-34.2%	-4.2%
VOP	71	146	106	123	-27.4%	-13.8%
Accused	1,657	1,774	1,568	1,612	-11.6%	-2.7%
<b>Total</b>	<b>2,266</b>	<b>2,718</b>	<b>2,268</b>	<b>2,326</b>	<b>-16.6%</b>	<b>-2.5%</b>
<b>Releases</b>						
Transfer Parole	22	34	28	23	-17.6%	21.7%
Parole	185	198	177	120	-10.6%	47.5%
Trans Plac/Furlough	81	58	72	14	24.1%	414.3%
HWH	212	219	185	157	-15.5%	17.8%
TS	271	227	205	270	-9.7%	-24.1%
Special Parole	68	75	54	50	-28.0%	8.0%
End of Sentence	1,035	878	884	893	0.7%	-1.0%
<b>Total</b>	<b>1,874</b>	<b>1,689</b>	<b>1,605</b>	<b>1,527</b>	<b>-5.0%</b>	<b>5.1%</b>
<b>Pre-trial Releases*</b>						
Did not return from Court	630	595	543	595	-8.7%	-8.7%
Release to Bond	572	529	586	508	10.8%	15.4%

\*Measured by occurrence, not by individual.

**Parole**

**Paroles Granted During December: 187**

The Board considered 249 parole cases at full panel hearings during January. In 187 cases, offenders were granted parole dates; in 62 cases, parole was denied. In addition there were 81 parole violation hearings, resulting in 58 re-paroles (46 revocations and 12 rescissions).

TABLE 4A –Paroles Granted, February 2010

	Hearings	Granted	Rate
DEC	281	218	78%
JAN 2010	209	143	68%
FEB	249	187	75%

Data Notes: Figures are based on the data available at the time of this report. Data in subsequent issues may not agree.

Parole hearings are typically scheduled six months prior to an offender's parole eligibility date. An offender may be released to parole on their first eligibility date or a later time. As a result, the time between parole being granted and the offender being released to parole may take longer than six months.

**Transfer Parole Approval Rate: 27%.**

In January, the number of cases reviewed for transfer parole dipped from the number of cases reviewed in both December and February. Sources at the Board of Pardons and Parole indicate that the January figure was anomalous and did not correlate to any changes in procedure. Transfer parole numbers are expected to return to typical levels.

TABLE 4B –Transfer Paroles, February 2010

	Reviewed	Granted	Denied	Continued	Rate
DEC	299	53	163	83	18%
JAN '10	180	32	81	67	18%
FEB	275	73	135	67	27%

**Probation**

**Total Court Support Services Division caseload for February 2010: 55,321**

TABLE 5 – Monthly CSSD Direct Sentenced & Probationer Community Placements

	Community Based	Out-patient	Inpatient/Resident	Total
NOV	1,522	765	6	2,293
DEC	1,458	1,026	32	2,516
JAN '10	1,447	1,043	15	2,505

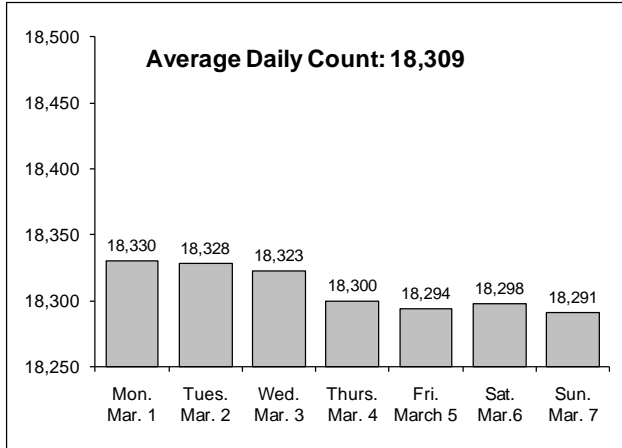
Data Notes: Figures are based on the latest data available at publication time. Figures in subsequent issues may not agree with those published here.

**Pre-trial Diversion and Supervision**

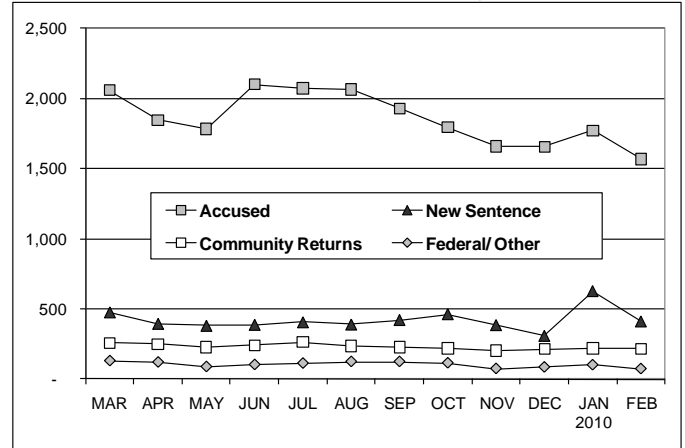
TABLE 6 – Pre-trial Diversion & Supervision

	Pre-trial Bail Case Starts	Client Supv. Starts
DEC	2,463	2,275
JAN '10	2,600	2,424
FEB	2,273	2,117

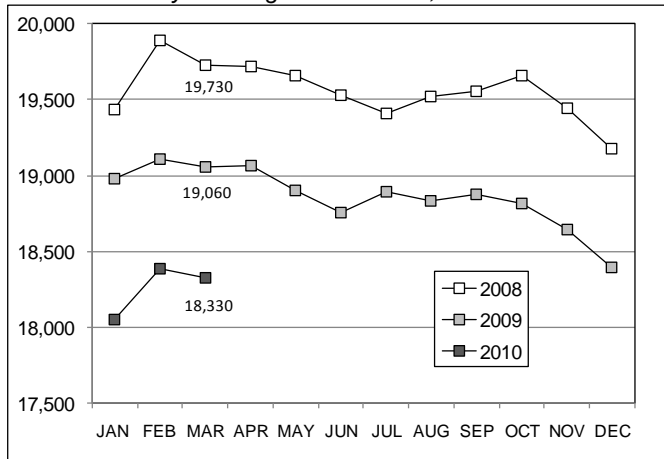
**CHART 3 – Snapshot Daily DOC Facility Population**  
 March 1, 2010 to March 7, 2010



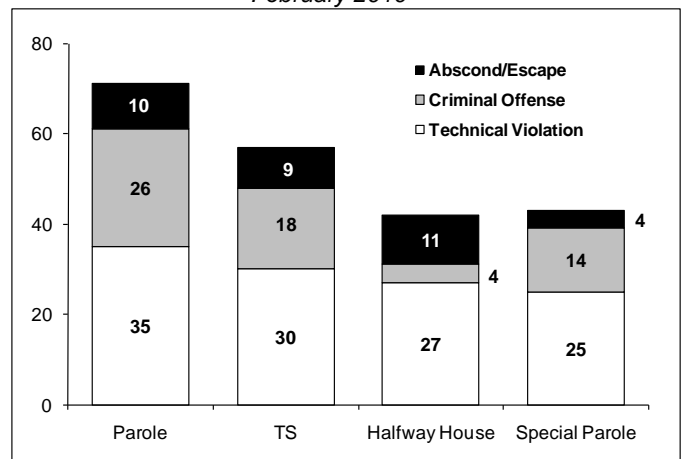
**CHART 6 – Monthly DOC Admissions by Type**  
 March 2009 to February 2010



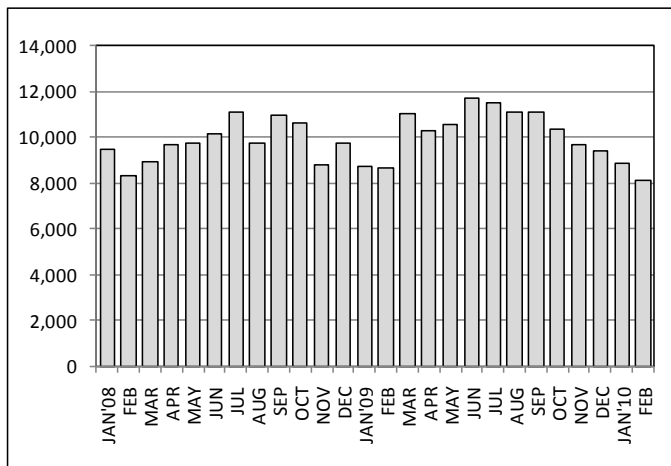
**CHART 4 –Monthly Prison Population**  
 January 1 through December 1, Calendar Year



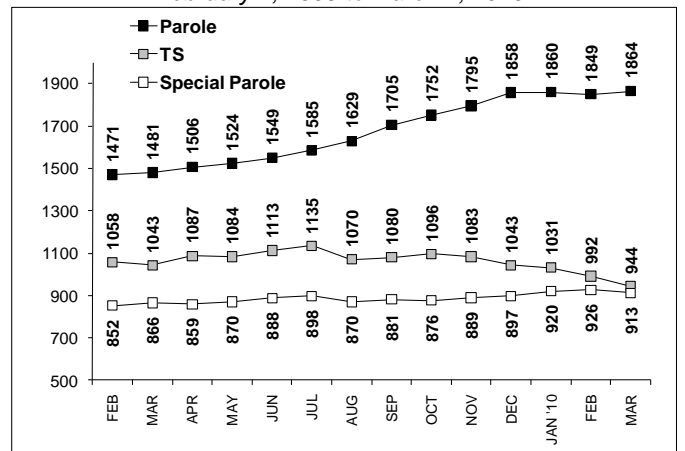
**CHART 7–Readmissions from Community Release**  
 February 2010



**CHART 5 – Monthly criminal arrests, statewide**  
 January 2008 to February 2010



**CHART 8 –Parole, TS and Special Parole, supervised cases**  
 February 1, 2009 to March 1, 2010



\* Data for all charts except Chart 5 was supplied by CT DOC  
 Data for Chart 5 was provided by Court operations at the Judicial Branch  
 \*\*Data in Chart 8 include all offenders under parole jurisdiction