

# OPM - Criminal Justice Policy & Planning Division Monthly Indicators Report



## Highlights

- On August 1, 16,660 people were incarcerated in state prison facilities. A month earlier, 16,591 people were incarcerated. This moderate increase in the prison population is the first since February.
- Over the last 12 months, the prison population fell by 5.6%. During the same period, the number of sentenced inmates declined by 8.7% (see table 2).
- The number of offenders serving terms of special parole in the community has increased by 80% since January 2008 (see chart 2A).
- The Average Daily Count (ADC) is calculated from the daily prison population during the first week of each month. The ADC is used so to smoothly out the effects of weekday fluctuations in the prison population.
- A year ago, the DOC was in the process of closing Bergin Correctional Institution, a level 2 facility that housed about 950 male inmates. Since then, the population in a majority of prisons has dropped (see chart 2B).
- In July, 489 offenders were discharged from state prisons. Of these, 425 were awarded Risk Reduction Earned Credits. The average offender discharged from prison received 44.6 days of credit. 353 offenders on community release also earned credit. On average they earned 88.1 days.

For questions, contact the Criminal Justice Policy & Planning Division at OPM.

## Prison Population Forecast

The prison population, which has been dropping steadily since February, stalled in July at about 16,600 inmates.

Although releases and discharges stayed at normal levels, there was a significant increase in criminal arrests during July that contributed to a 5% jump in the accused prison population (see table 2). Still, the number of monthly arrests in July was lower than last year's figure.

It is too early to know whether the prison population, from this point forward, will follow typical seasonal patterns. Statewide arrests typically rise as the summer progresses. During this past month arrests appear to have offset other factors that have acted to reduce the size of the prison population. The number of offenders on home confinement also appears to have stabilized in July (see table 2).

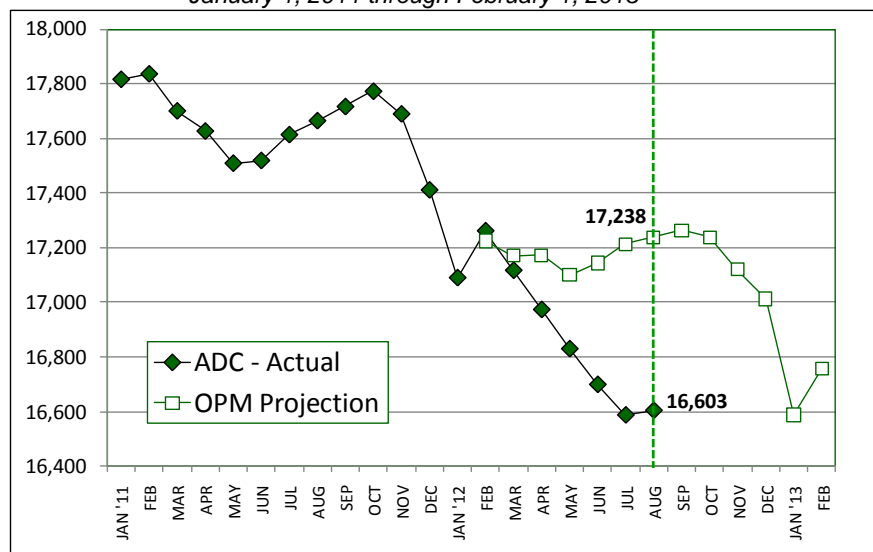
The difference between OPM's projected prison population and the actual prison population can be viewed as a rough measure of the number of offenders who would have remained incarcerated had the RREC and DUI home confinement programs not been implemented.

TABLE 1 –Prison Population Forecast

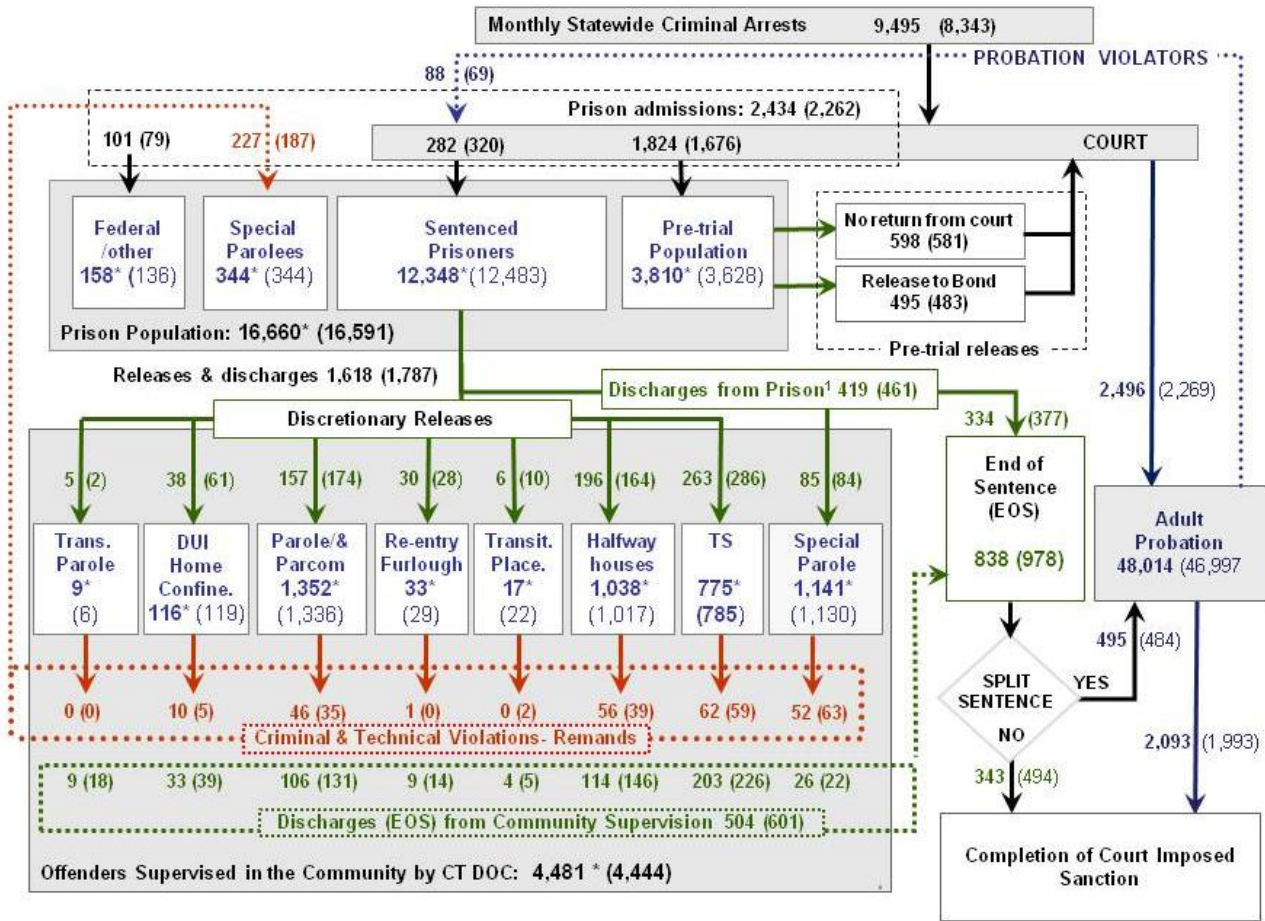
	Actual (*Avg OPM 2011 Daily Count)	Forecast	Diff. %
FEB '12	17,224*	17,224	
MAR	17,117*	17,171	-0.3%
APR	16,973*	17,172	-1.2%
MAY	16,829*	17,100	-1.6%
JUN	16,698*	17,143	-2.6%
JUL	16,586*	17,213	-3.6%
AUG	16,603*	17,238	-3.7%
SEP	-	17,263	
OCT	-	17,238	
NOV	-	17,121	
DEC	-	17,013	
JAN '13	-	16,587	
FEB	-	16,756	

\* Average Daily Count, first week of month

CHART 1 – Actual ADC of the prison population against the OPM forecast  
January 1, 2011 through February 1, 2013

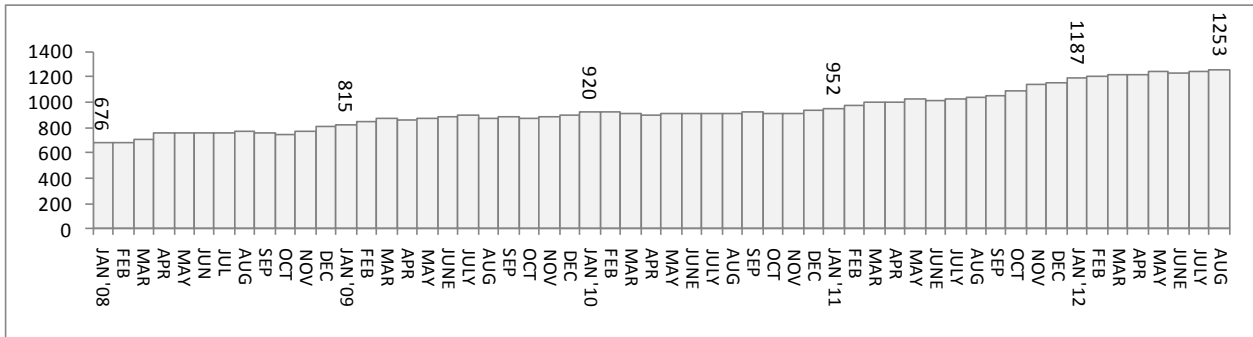


## CHART 2 – Connecticut Criminal Justice System – Monthly Overview



This chart contains monthly operational data for July 2012 and daily counts reported on August 1, 2012. Asterisks (\*) indicate daily, first-of-month figures. Figures enclosed by parenthesis are for the previous month. <sup>1</sup> Elsewhere, DOC reports that 489 offenders discharged (EOS) from DOC facilities during July. Data sources include: Arrests-OBTs, Court and probation data: CSSD, all other data CT DOC

## CHART 2A – The Special Parole Population in the Community, January 2008 through August 2012



## CHART 2B – Prison Population, by facility, on August 1<sup>st</sup>

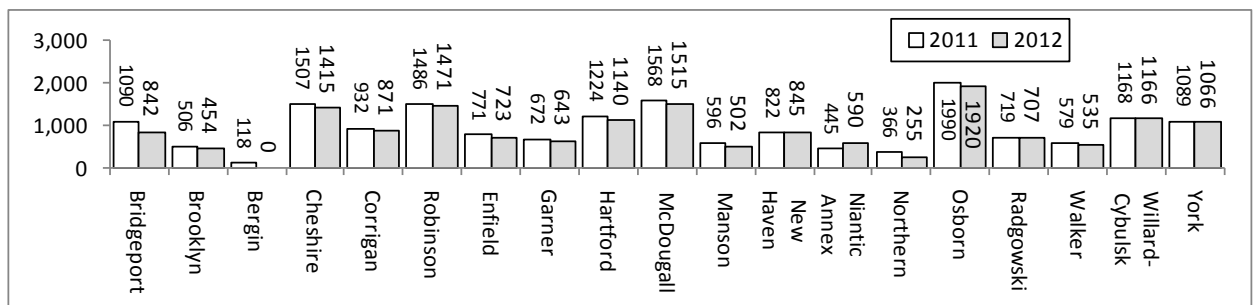


TABLE 2 – DOC Population Counts, First of the Month

	2011	2011	2012	2011	% Change	
	June 1	July 1	Aug. 1	Aug. 1	Monthly	Annual
<b>DOC Facility</b>						
Federal/Other	138	136	158	160	16.2%	-1.3%
Sentenced	12,666	12,483	12,348	13,523	-1.1%	-8.7%
Special Parole	342	344	344	333	0.0%	3.3%
Pre-trial	3,572	3,628	3,810	3,632	5.0%	4.9%
<b>Total</b>	<b>16,718</b>	<b>16,591</b>	<b>16,660</b>	<b>17,648</b>	<b>0.4%</b>	<b>-5.6%</b>
<b>DOC Community</b>						
Transfer Parole	6	6	9	33	50.0%	-72.7%
Parole/ Parcom Total	1,308	1,336	1,352	1,770	1.2%	-23.6%
Parole	1,133	1,166	1,181	1,594	1.3%	-25.9%
Parcom @ CT	175	170	171	176	0.6%	-2.8%
Furlough	25	29	33	7	13.8%	371.4%
Trans Placement	17	22	17	8	-22.7%	112.5%
Home confinement/DUI	103	119	116	0	-2.5%	-
Halfway House Total	1,080	1,017	1,038	1,117	2.1%	-7.1%
Comm Release	879	828	831	889	0.4%	-6.5%
TS	15	10	7	18	-30.0%	-61.1%
Parole	81	70	83	113	18.6%	-26.5%
Transfer Parole	0	0	0	0	-	-
Special Parole	105	109	117	97	7.3%	20.6%
TS Total	776	785	775	995	-1.3%	-22.1%
Special Parole	1,126	1,130	1,141	934	1.0%	22.2%
<b>Total</b>	<b>4,441</b>	<b>4,444</b>	<b>4,481</b>	<b>4,864</b>	<b>0.8%</b>	<b>-7.9%</b>

TABLE 3 – DOC Admissions and Releases, Monthly Totals\*

	2012	2012	2012	2011	% Change	
	May	June	July	July	Monthly	Annual
<b>Admissions</b>						
Federal/Other	102	79	101	108	27.8%	-6.5%
Returns	234	187	227	217	21.4%	4.6%
Transfer Parole	5	5	10	1	-	-
Parole	54	35	46	58	31.4%	-20.7%
Trans Plac/Furlough	3	2	1	1	-	-
HWH	49	39	56	50	43.6%	12.0%
TS	60	59	62	63	5.1%	-1.6%
Special Parole	63	47	52	44	10.6%	18.2%
New Sentence	403	320	282	331	-11.9%	-14.8%
VOP	100	69	88	65	27.5%	35.4%
Pre-trial	1,665	1,676	1,824	1,620	8.8%	12.6%
<b>Total</b>	<b>2,404</b>	<b>2,262</b>	<b>2,434</b>	<b>2,276</b>	<b>7.6%</b>	<b>6.9%</b>
<b>Releases</b>						
Transfer Parole	1	2	5	19	-	-73.7%
Parole	202	174	157	166	-9.8%	-5.4%
Trans Plac/Furlough	37	38	36	16	-5.3%	125.0%
Home Confinement DUI	52	61	38	0	-37.7%	-
HWH	244	164	196	206	19.5%	-4.9%
TS	272	286	263	257	-8.0%	2.3%
Special Parole	74	84	85	80	1.2%	6.3%
End of Sentence	952	978	838	839	-14.3%	-0.1%
<b>Total</b>	<b>1,834</b>	<b>1,787</b>	<b>1,618</b>	<b>1,583</b>	<b>-9.5%</b>	<b>2.2%</b>
<b>Pre-trial Releases*</b>						
Did not return from Court	584	581	598	540	2.9%	10.7%
Release to Bond	472	483	495	476	2.5%	4.0%

\*Monthly totals count occurrences, not individuals.

**Board of Pardons and Parole**

TABLE 4 – Parole eligibility, inmates with sentences greater than 24 months

	Parole eligible	Not eligible
JUNE	8,456	835
JULY	8,384	838
AUG	8,338	840

TABLE 4A – Parole hearings

	Hearings	Granted	Rate
MAY	200	150	75%
JUNE	191	155	81%
JULY	197	149	76%

TABLE 4B – Other Parole Hearings

	Revocations		Rescissions	
	Reparoled	Denied	Reparoled	Denied
MAY	63	32	14	16
JUN	37	20	14	11
JUL	41	21	9	9

**Public Defender Services**

TABLE 5 – Public Defender Cases

	Cases appointed		Cases disposed	
	GA	JD	GA	JD
APR	5,292	208	4,130	178
MAY	6,112	322	4,556	183
JUN	5,509	206	3,842	133

**CSSD – Adult Probation**

TABLE 6 – Monthly CSSD Direct Sentenced & Probationer Community Placements

	Community Based	Out-patient	Inpatient/ Resident	Total
	MAR	1,263	809	31
APR	1,118	823	22	1,963
MAY	856	974	11	1,841
JUN	1,017	953	29	1,999

**Pre-trial Diversion and Supervision**

TABLE 7 – Pre-trial and split sentence starts

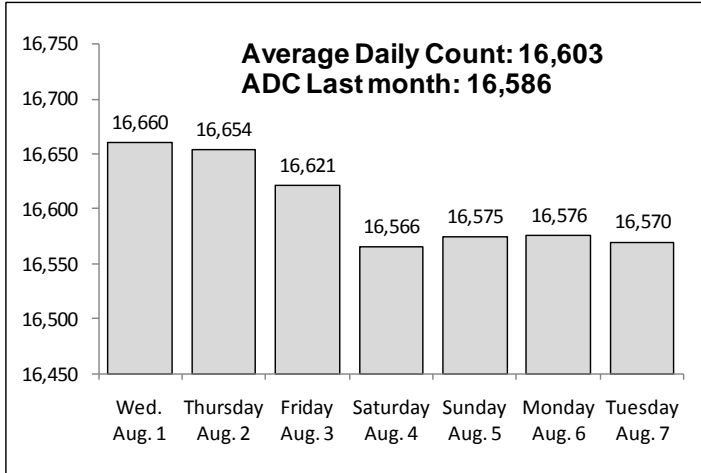
	Pre-trial Case Starts	Bail Client Starts	Supv. Split Sentence Starts
MAY	2,588	2,567	478
JUN	2,464	2,269	484
JULY	2,485	2,496	495

TABLE 8 – The Jail Re-interview Program

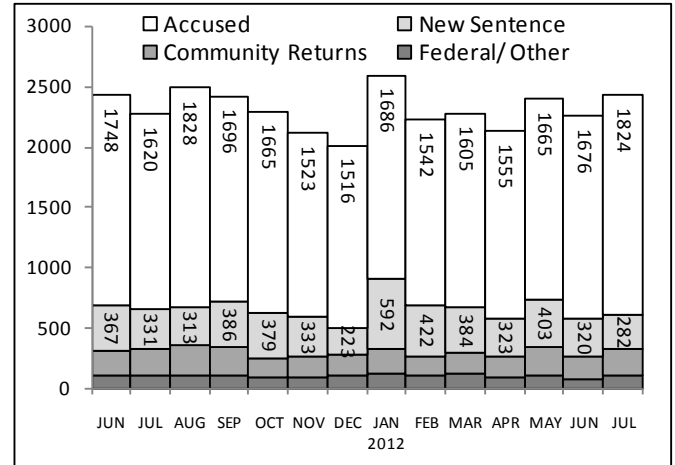
	Offenders interviewed	Offenders released	Releases last year
APR	1,048	660	673
MAY	1,358	733	719
JUNE	1,240	751	725
JULY	1,284	709	713

Data Notes: Figures are based on operational data available at the time of this report. Data in subsequent issues may not agree.

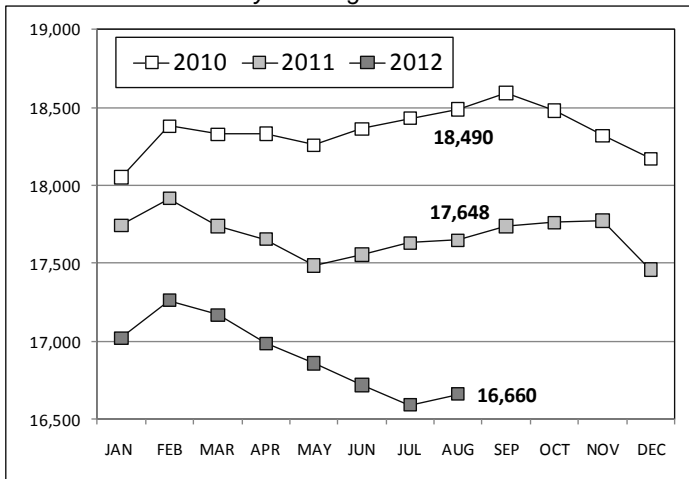
**CHART 3 – Prison Population**  
August 1, 2012 to August 7, 2012



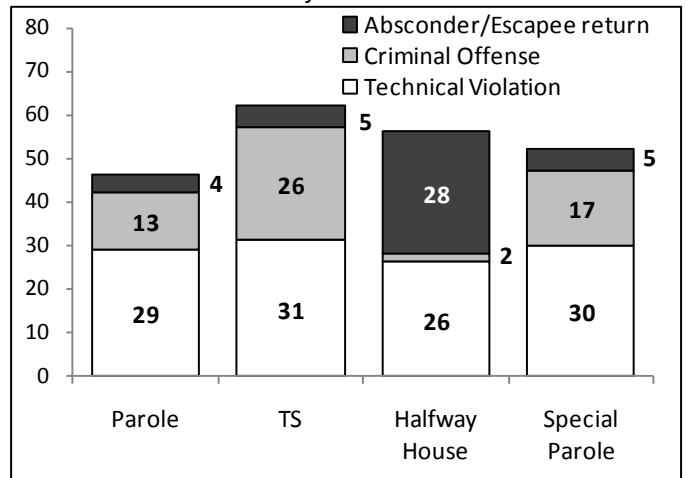
**CHART 6 – Monthly DOC Admissions by Type**  
June 2011 through July 2012



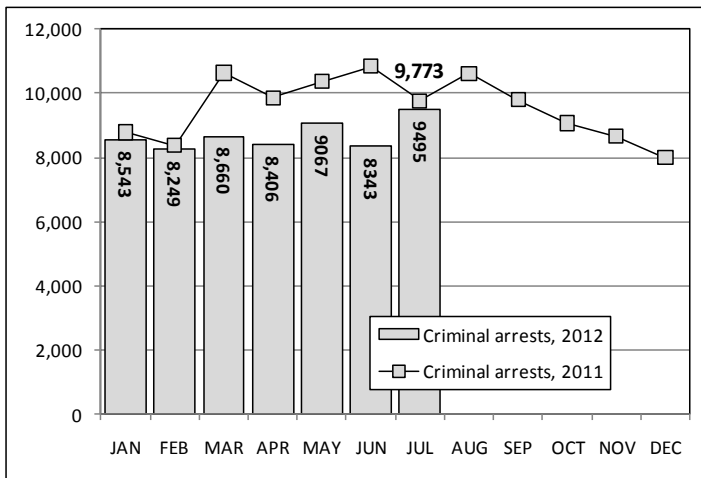
**CHART 4 – Prison Population, first-of-month**  
January 1 through December 1



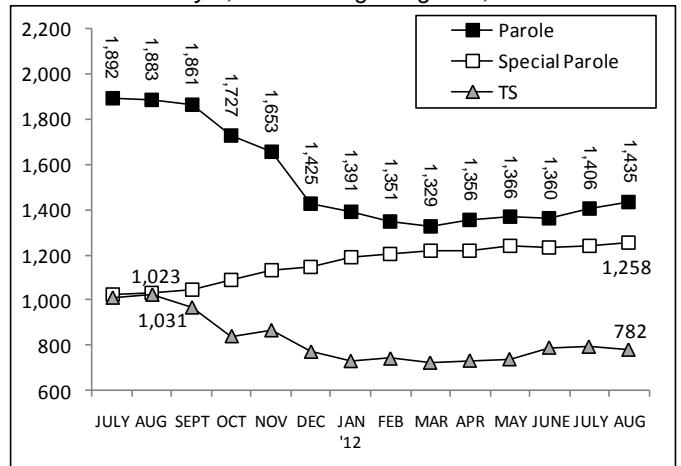
**CHART 7 – Readmissions from Community Release**  
July 2012



**CHART 5 – Monthly Statewide Criminal Arrests**  
2011 versus 2012



**CHART 8 – Parole, TS and Special Parole, supervised cases**  
July 1, 2011 through August 1, 2012



Note: Data for all charts, with the exception of Chart 5, was supplied by CT DOC. Data for Chart 5 is based on new case starts in the state Offender-Based Tracking System (OBTS).