

OPM - Criminal Justice Policy & Planning Division Monthly Indicators Report



Highlights

- On December 1, 2012, 16,563 offenders were incarcerated in the state's prisons. Last month, the inmate count stood at 16,826. The figure for December 1st was the lowest since November 1998.
- During November, 822 offenders earned at least one day of Risk Reduction Earned Credit (RREC). The average prisoner who discharged from prison earned 43.8 days of credit. The average credit earned among offenders discharging from community supervision was 96.7 days.
- RREC initiative, a decline in arrests and fewer imposed prison sentences have all contributed to the drop in the sentenced prison population over the past year. On December 1st there were 1,000 fewer sentenced inmates in prison than there were on the same day last year. RREC has also had a large impact on the number of offenders under DOC community supervision (see charts 2 and 2a).
- This paper is expanding its coverage of the state's pre-trial prison population; publishing data on bond amounts and lengths-of-stay among pre-trial prisoners (see tables 5 and 5a).
- The State of Connecticut is planning to open a secure, 95-bed nursing home for prisoners and mental patients who have significant, advanced health issues. The facility will be operated by iCare Management and will be located in Rocky Hill.

Please direct comments or questions to: opm.mir@ct.gov

Prison Population Forecast

The prison population fell last month, the first decline since June. Between November 1 and December 1, the prison population shrank by 262. The number of sentenced prisoners fell by 88, the pre-trial population fell by 180.

The introduction of RREC in October 2011 precipitated one of the steepest declines on record in the size of the state's prison population. RREC and, to a lesser extent, the DUI home confinement program are thought to largely explain the difference between the actual prison population and the population forecast by OPM in February. If this assumption is correct, these two initiatives appear to have reduced demand on the prison system by approximately 125,000 inmate-bed days between March and December of this year.

OPM is currently preparing its new prison population forecast for 2013. In this iteration, OPM will modify its existing methodology to include separate consideration of the differences between in the sentenced and pre-trial population and effect of recidivism on the future prison population. The new forecast will be published in February 2013.

TABLE 1 --Prison Population Forecast

	Actual (*Avg OPM 2011 Daily Count)	Forecast	Diff. %
FEB '12	17,224*	17,224	
MAR	17,117*	17,171	-0.3%
APR	16,973*	17,172	-1.2%
MAY	16,829*	17,100	-1.6%
JUN	16,698*	17,143	-2.6%
JUL	16,586*	17,213	-3.6%
AUG	16,603*	17,238	-3.7%
SEP	16,677*	17,263	-3.4%
OCT	16,745*	17,238	-2.9%
NOV	16,777*	17,121	-2.0%
DEC	16,566*	17,013	-2.6%
JAN '13	-	16,587	
FEB	-	16,756	

* Average Daily Count, first week of month

CHART 1 – Actual ADC of the prison population against the OPM forecast
January 1, 2011 through February 1, 2013

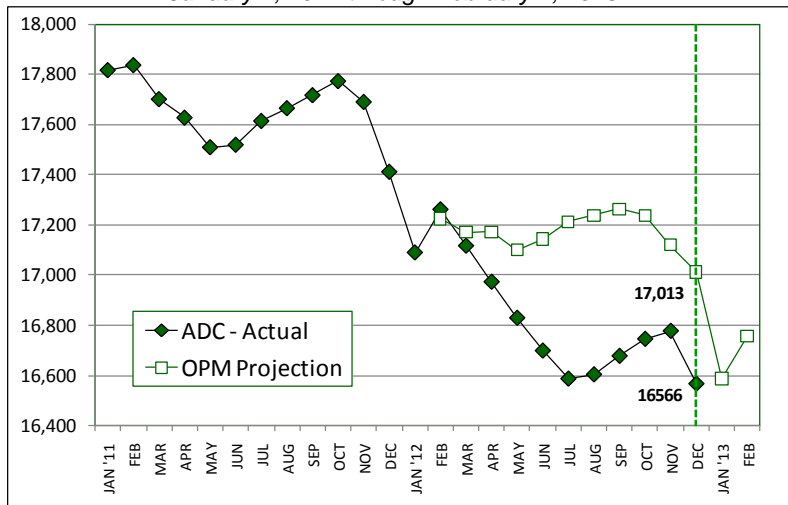
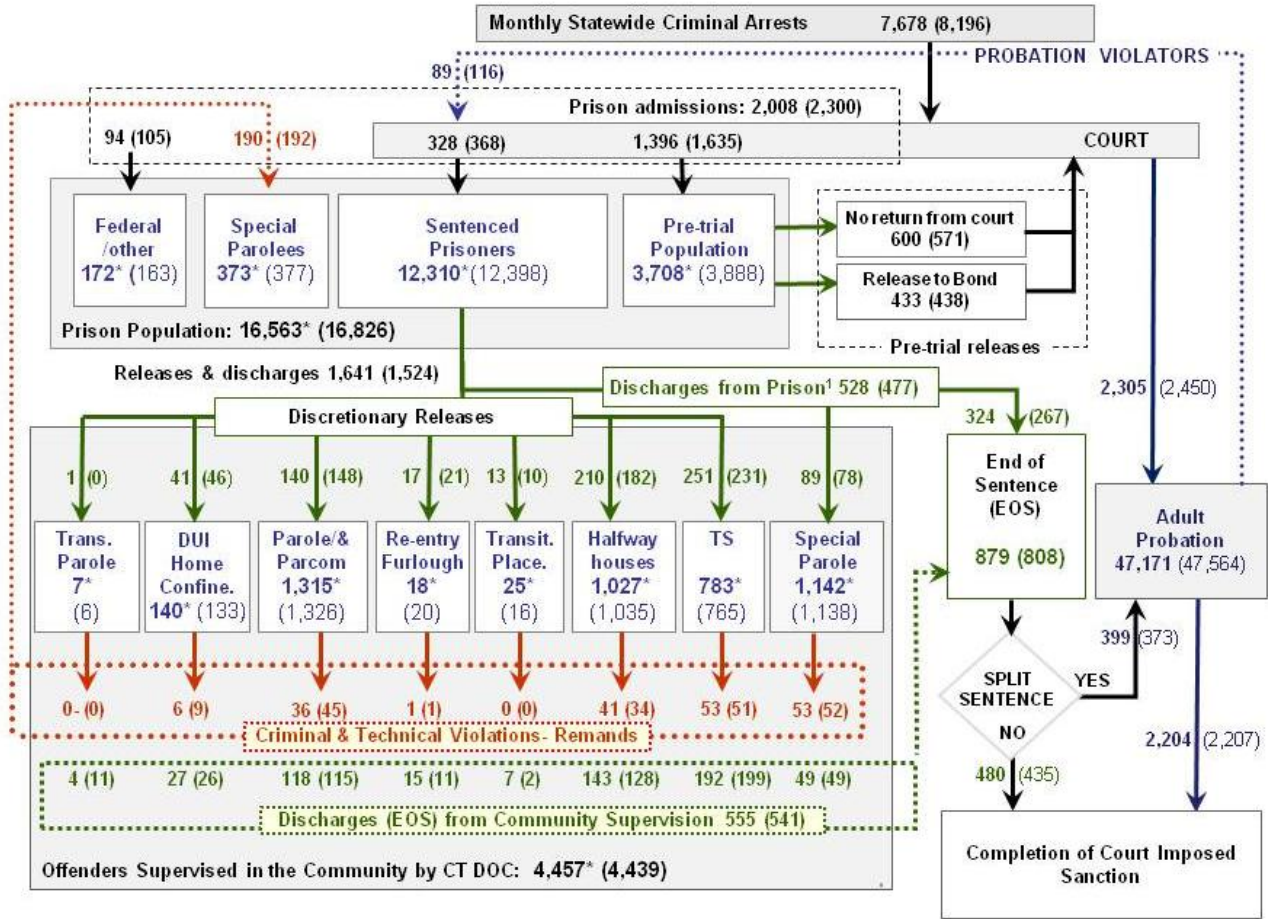


CHART 2 – Connecticut Criminal Justice System – Monthly Overview



This chart contains monthly operational data for November 2012 and daily counts reported on December 1, 2012. Asterisks (*) indicate counts on December 1st. Numbers enclosed by parenthesis are for the previous month. ¹DOC facility reports indicate that 528 offenders discharged (EOS) from DOC facilities during November. Sources include: Arrest data - OBTS, Court and probation data - CSSD, all other data CT DOC

CHART 2a – Statewide Parole caseload – January 1, 2011 through December 1, 2012

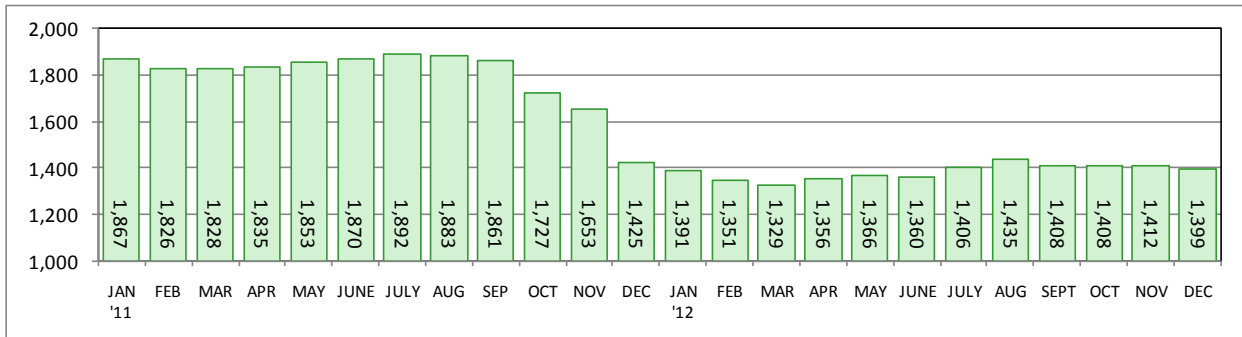


CHART 2b – Statewide Transitional Supervision caseload – January 1, 2011 through December 1, 2012

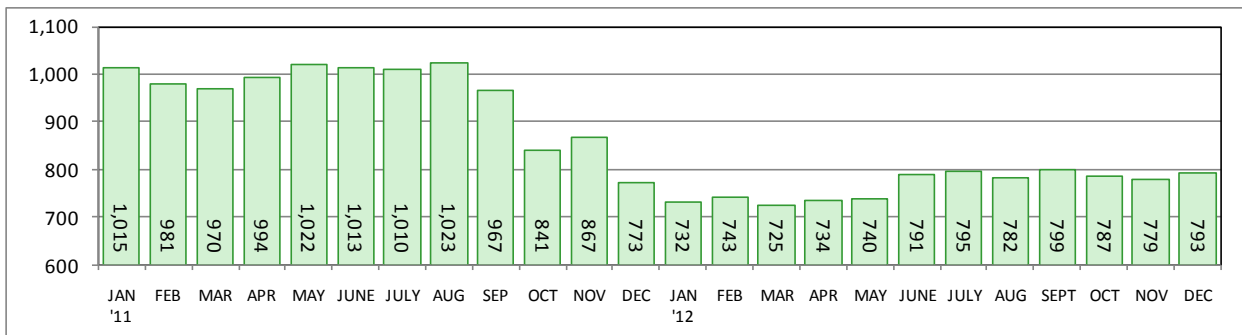


TABLE 2 – DOC Population Counts, First of the Month

	2012	2012	2012	2011	% Change	
	Oct. 1	Nov. 1	Dec. 1	Dec. 1	Monthly	Annual
DOC Facilities						
Federal/Other	166	163	172	149	5.5%	15.4%
Sentenced	12,321	12,398	12,310	13,310	-0.7%	-7.5%
Special Parole	366	377	373	289	-1.1%	29.1%
Pre-trial	3,888	3,888	3,708	3,711	-4.6%	-0.1%
Total	16,741	16,826	16,563	17,459	-1.6%	-5.1%
DOC Community						
Transfer Parole	8	6	7	21	16.7%	-66.7%
Parole/ Parcom Total	1,330	1,326	1,315	1,320	-0.8%	-0.4%
Parole	1,161	1,155	1,150	1,146	-0.4%	0.3%
Parcom @ CT	169	171	165	174	-3.5%	-5.2%
Furlough	19	20	18	23	-10.0%	-21.7%
Trans Placement	19	16	25	10	56.3%	150.0%
Home confinement/DUI	123	133	140	0	5.3%	-
Halfway House Total	1,022	1,035	1,027	1,098	-0.8%	-6.5%
Comm Release	825	825	815	863	-1.2%	-5.6%
TS	11	14	10	18	-28.6%	-44.4%
Parole	78	86	84	105	-2.3%	-20.0%
Transfer Parole	0	0	0	1	-	-
Special Parole	108	108	118	111	9.3%	6.3%
TS Total	776	765	783	755	2.4%	3.7%
Special Parole	1,157	1,138	1,142	1,036	0.4%	10.2%
Total	4,454	4,439	4,457	4,263	0.4%	4.6%

TABLE 3 – DOC Admissions and Releases, Monthly Totals*

	2012	2012	2012	2011	% Change	
	Sept.	Oct.	Nov.	Nov.	Monthly	Annual
Admissions						
Federal/Other	99	105	94	83	-10.5%	13.3%
Returns	206	192	190	177	-1.0%	7.3%
Trans.Parole / DUI	7	9	6	2	-	-
Parole	45	45	36	54	-20.0%	-33.3%
Trans Plac/Furlough	4	1	1	0	-	-
HWH	41	34	41	28	20.6%	46.4%
TS	59	51	53	48	3.9%	10.4%
Special Parole	50	52	53	45	1.9%	17.8%
New Sentence	311	368	328	333	-10.9%	-1.5%
VOP	88	116	89	79	-23.3%	12.7%
Pre-trial	1,578	1,635	1,396	1523	-14.6%	-8.3%
Total	2,194	2,300	2,008	2,116	-12.7%	-5.1%
Releases						
Transfer Parole	1	0	1	7	-	-
Parole	155	148	140	147	-5.4%	-4.8%
Furlough	12	21	17	13	-19.0%	30.8%
Transfer Placement	7	10	13	4	30.0%	-
Home Confinement DUI	38	46	41	0	-10.9%	-
HWH	201	182	210	236	15.4%	-11.0%
TS	222	231	251	212	8.7%	18.4%
Special Parole	85	78	89	87	14.1%	2.3%
End of Sentence	797	808	879	1351	8.8%	-34.9%
Total	1,518	1,524	1,641	2,057	7.7%	-20.2%
Pre-trial Releases*						
Did not return from Court	531	571	600	523	5.1%	14.7%
Release to Bond	391	438	433	465	-1.1%	-6.9%

* Totals reflect events not individuals.

Board of Pardons and Parole

TABLE 4 – Inmates with sentences greater than 24 months

	Parole eligible	Not eligible
SEPT	8,326	841
OCT	8,289	842
NOV	8,284	841
DEC	8,272	842

TABLE 4a – Parole hearings

	Hearings	Granted	Rate
Sept.	157	104	66%
Oct.	132	93	70%
Nov.	132	93	70%

DOC – Pre-trial offenders

TABLE 5 – Bonds for pre-trial prisoners

Bond amount	Offenders on	
	Dec. 1, 2012	Percent
<\$ 20,000	600	16%
\$20k to <\$50k	602	16%
\$50k to <\$100k	860	23%
\$100k to <\$250k	837	22%
\$250k to <\$1M	605	16%
\$1M or higher	227	6%
Total	3731	100%

TABLE 5a – Pre-trial inmates, length-of-stay

Weeks since last DOC admit	Offenders, Dec 1, 2012	Percent
< 1 week	468	13%
1 to < 3 weeks	332	9%
3 to < 10 weeks	977	26%
10 to < 30 weeks	1,198	32%
30 weeks or longer	769	21%
Total	3,744	100%

Jail Re-interview Program

TABLE 6 – Monthly interviews and releases

	Offenders interviewed	Offenders released	Releases last year
Sept.	1,135	620	807
Oct.	1,135	659	751
Nov.	1,533	807	701

CSSD – Adult Probation

TABLE 7 –Pre-Trial & split-sentence starts

	Pre-trial Bail Case Starts	Client Supv. Starts	Split Sentence Starts
	Sept.	2,129	2,352
Oct.	2,321	2,450	373
Nov.	2,271	2,305	399

DUI home confinement

TABLE 8 – Releases and discharges

	Monthly releases to	On home confinement, 1st of month	Monthly discharges from
Oct.	46	123	26
Nov.	41	133	27
Dec.	-	140	-

Note: Figures published here are based on operational data available at the time of this report. Data in subsequent issues may not agree.

CHART 3 – Prison Population
December 1, 2012 to December 7, 2012

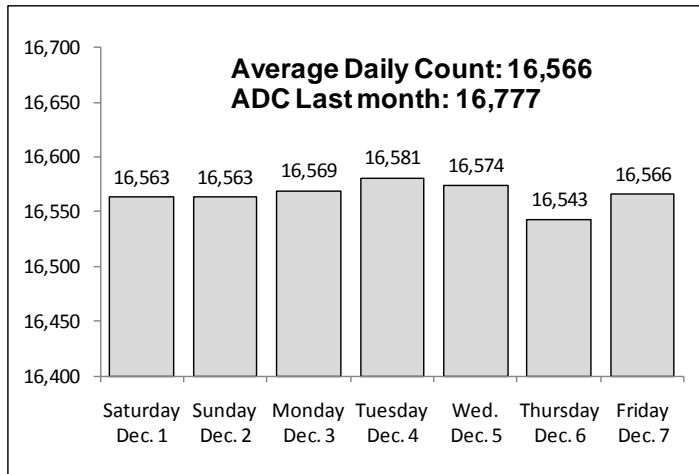


CHART 6 – Monthly DOC Admissions by Type
Oct. 2011 through Nov. 2012

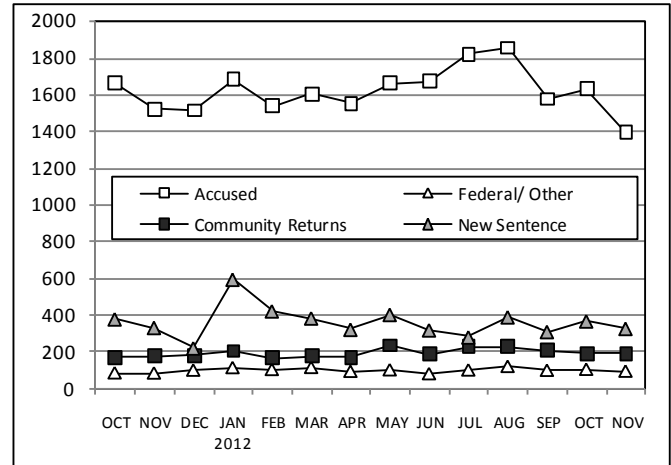


CHART 4 – Prison Population, first-of-month
January 1 through December 1

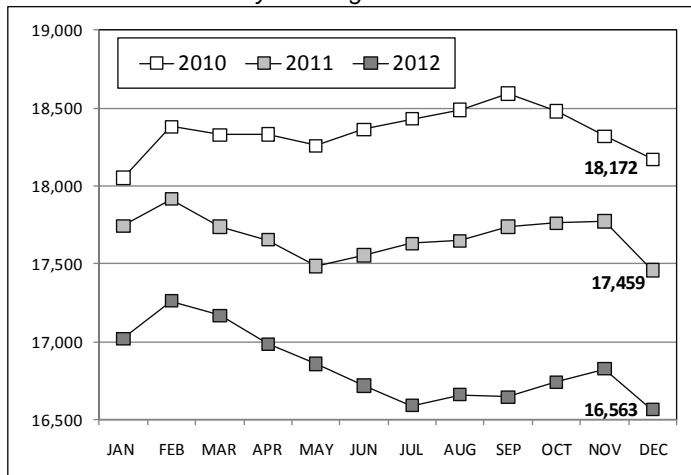


CHART 7 – Readmissions from Community Release
November 2012

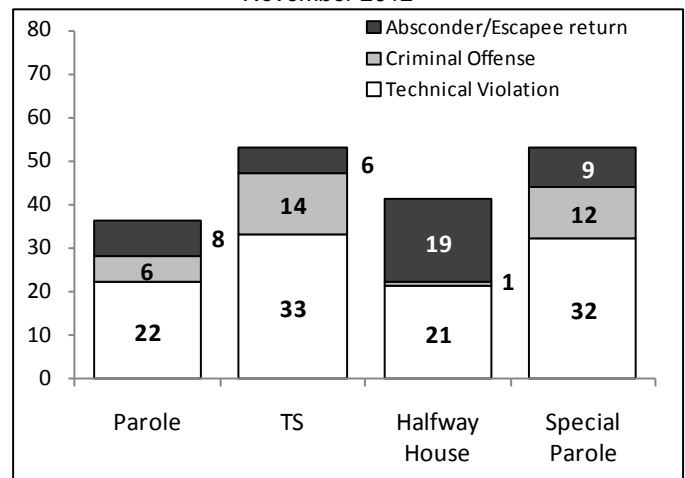


CHART 5 – Monthly Statewide Criminal Arrests
2011 versus 2012

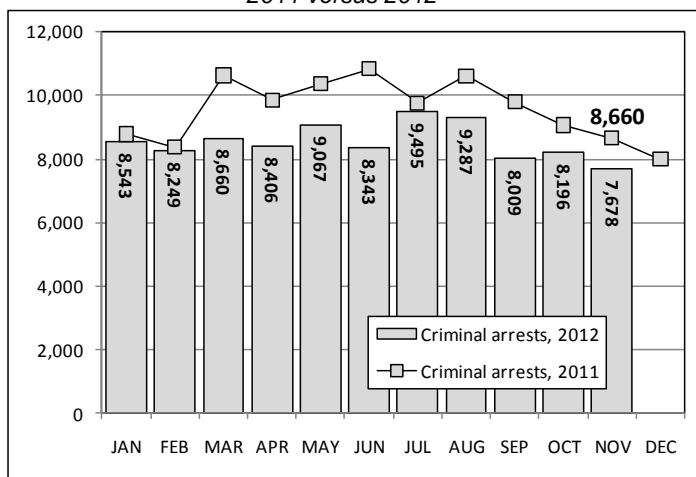
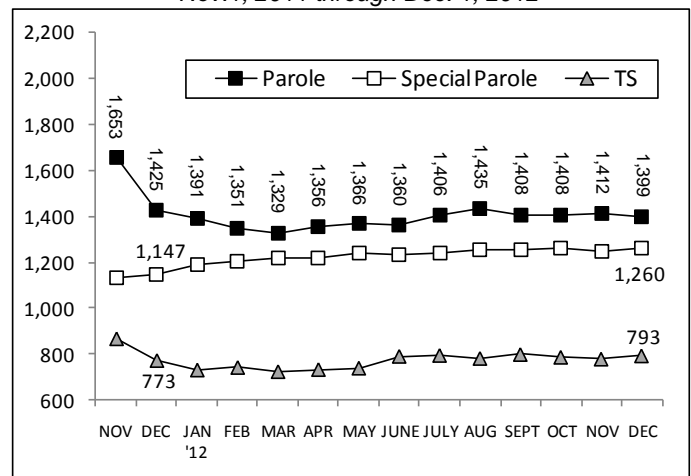


CHART 8 – Parole, TS and Special Parole, supervised cases
Nov. 1, 2011 through Dec. 1, 2012



Note: Data for all charts, with the exception of Chart 5, was supplied by CT DOC. Data for Chart 5 is based on new case starts in the state Offender-Based Tracking System (OBTS).