

OPM - Criminal Justice Policy & Planning Division Monthly Indicators Report



Published by the Connecticut Statistical Analysis Center at the Connecticut Office of Policy & Management

Highlights

- On March 1, 2012, 17,169 people were incarcerated in state prison facilities. Last March 1st, 17,739 were incarcerated.
- The number of offenders discharging their sentences early due to the Risk Reduction Earned Credit (RREC) program appears to be leveling out. In December, 1,014 offenders earned days off their sentences because of RREC; last month 842 offenders discharged early due to RREC.
- The number of parole and transitional supervision cases has dropped significantly in recent months (See Chart 8). The RREC program is largely responsible.
- During February, 328 offenders in community supervision programs discharged early as a result of the RREC program. The average offender under community supervision earned 84.0 days of credit. Among offenders who were discharged early from a prison facility, the average amount of awarded credit was 42.9 days.
- The DOC reports that 1,542 pre-trial offenders were admitted to prison during February. This represents an 18.3% increase over the 1,303 pre-trial offenders that were admitted last February (See Table 3). Monthly statewide arrests were also up this February compared to last year.

The Criminal Justice Policy & Planning Division at OPM will continue to track the DOC's RREC program. We currently anticipate publishing a short report on the topic in May.

Prison Population Forecast

As projected, the state's prison population experienced a moderate decline in February. The Average Daily Count (ADC) during the first week of March was 107 prisoners lower than last month's figure. The state's prison population is expected to exhibit moderate monthly declines through May.

The RREC program, which affects only sentenced prisoners, has had a significant impact on the composition of the state's prison population. A year ago there were roughly four sentenced inmates in prison for each pre-trial detainee. Last month that figure had dropped to approximately 3.6 sentenced inmates for every pre-trial detainee.

Most offenders who are sentenced to terms of incarceration longer than 24 months are eligible for parole. Compared to last year, the parole eligible population incarcerated in DOC facilities has fallen from 9,301 to 8,726, a 6.2% decline. During the same period, the number of non-parole-eligible offenders, serving sentences longer than 24 months, has remained almost constant at about 820. With parole caseloads that are already low by recent standards, it is not clear what the smaller pool of parole-eligible offenders will have on caseloads moving forward.

TABLE 1 –Prison Population Forecast

	Actual (*Avg OPM 2011 Daily Count)	Forecast	Diff. %
FEB '12	17,224*	17,224	
MAR	17,117*	17,171	-0.3%
APR	-	17,172	
MAY	-	17,100	
JUN	-	17,143	
JUL	-	17,213	
AUG	-	17,238	
SEP	-	17,263	
OCT	-	17,238	
NOV	-	17,121	
DEC	-	17,013	
JAN '13	-	16,587	
FEB	-	16,756	

* Average Daily Count, first week of month

CHART 1 – Average Daily Inmate Count for the First Week of the Month
January 1, 2010 through February 1, 2012

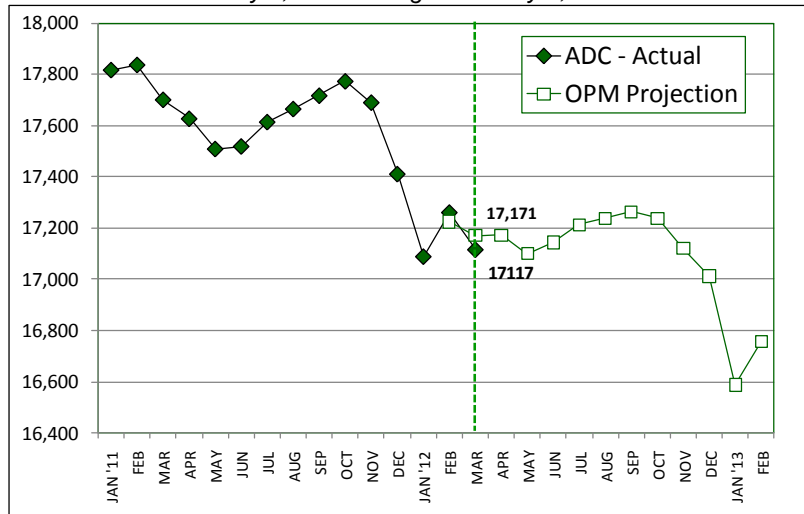
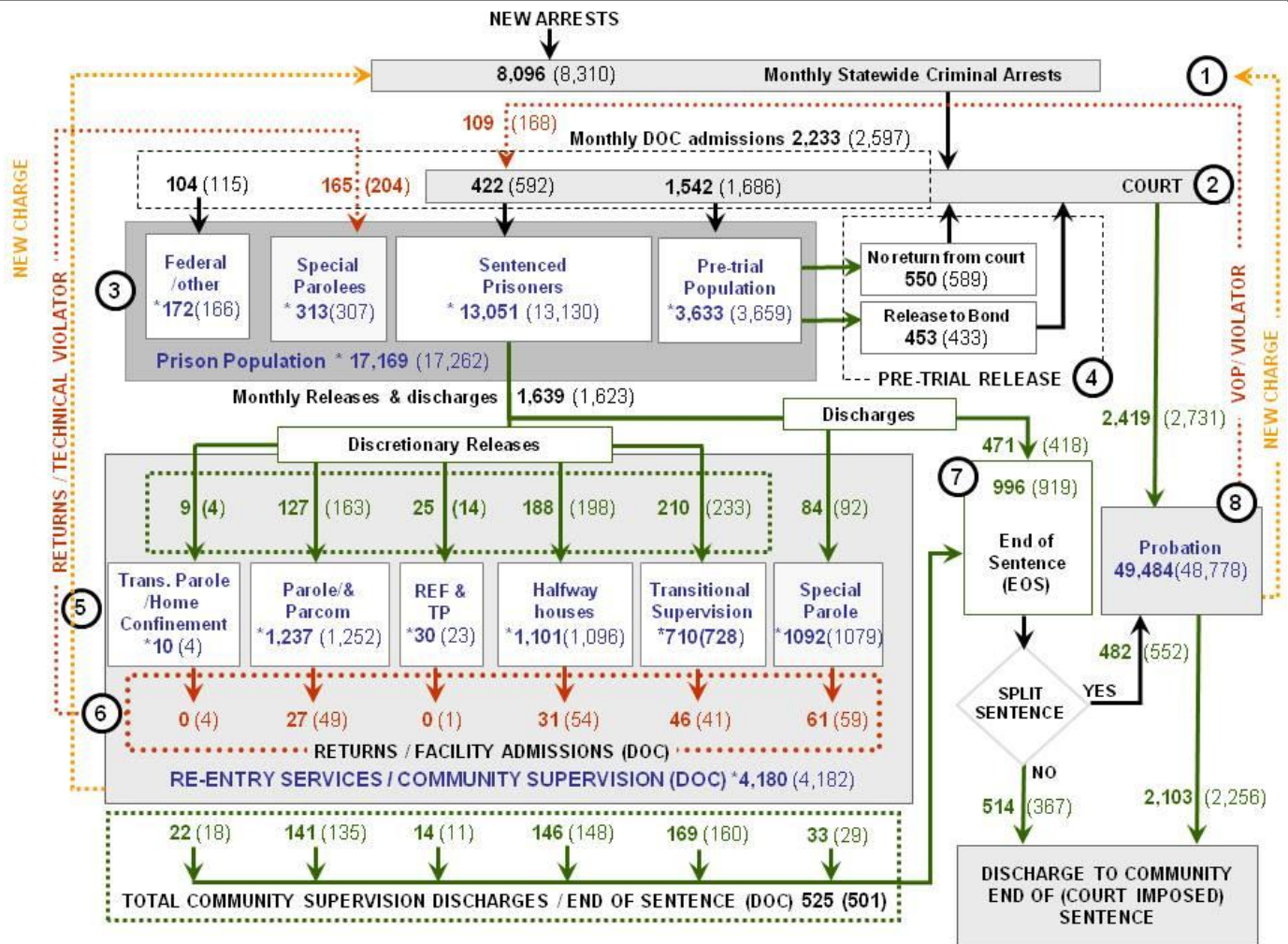


CHART 2 – Connecticut Criminal Justice System – Monthly Overview



Asterisks (*) indicate the population count on March 1, 2012.
 Parentheses enclose figures for the previous month.

Sources: Arrest-Judicial/Court Operations; Court-Judicial/CSSD; Facility/Community Supervision-DOC

Unlike states that have county governments, the majority of agencies within Connecticut's criminal justice system are State agencies. The one exception is law enforcement, where there are over 90 local police departments and the Connecticut State Police.

- 1) Arrest:** An individual enters into the criminal justice system at the time of arrest.
- 2) Court:** At arraignment, judges review the charges filed against the accused and set a bail amount. Individuals who cannot meet bail conditions are incarcerated in DOC facilities to await trial. If the defendant is convicted, they may be sentenced to a range of sanctions including a fine, probation, or a term of incarceration.
- 3) DOC Facilities:** Total facility population at DOC contains the unsentenced population, which is awaiting trial, the sentenced population, inmates who have returned from special parole, and offenders charged in federal cases or non-state cases.
- 4) Pre-Trial Release:** Some defendants who are incarcerated pending the disposition of their cases may be eligible for a bond reduction or placement into pre-trial diversionary programs or treatment programs. These programs feature close coordination and cooperation between DOC, CSSD and the Department of Mental Health and Addiction Services (DMHAS).
- 5) Re-Entry Services:** Depending on several factors, an inmate may be eligible to complete a portion of his/her prison sentence under supervision of the DOC's Parole and Community Services Unit. Non-violent Inmates with sentences shorter than two years are eligible for Transitional Supervision after serving 50% of their sentences. Inmates serving sentences longer than two years may be eligible for parole.
- 6) Returns:** Offenders who violate the conditions of their community release may be returned to prison to complete the remainder of their sentences.
- 7) End of Sentence (EOS):** At the end of their sentences some offenders are required to complete a period of post-release supervision. Split-sentence offenders are supervised by the Judicial Branch's Office of Adult Probation. Offenders sentenced to special parole remain under DOC supervision.
- 8) Violation of Probation:** If an individual violates the terms of their probation, an arrest warrant must be issued, and the violator's case is returned to court.

TABLE 2 – DOC Population Counts, First of the Month

	2011	2011	2012	2011	% Change	
	Jan. 1st	Feb. 1st	Mar 1st.	Mar 1st.	Monthly	Annual
DOC Facility						
Federal/Other	145	166	172	145	3.5%	18.6%
Sentenced	12,955	13,130	13,051	13,758	-0.6%	-5.1%
Special Parole	299	307	313	292	1.9%	7.2%
Pre-trial	3,623	3,659	3,633	3,544	-0.7%	2.5%
Total	17,022	17,262	17,169	17,739	-0.5%	-3.2%
DOC Community						
Transfer Parole	21	12	8	40	-	-
Parole/ Parcom Total	1,320	1,289	1,237	1,743	-4.2%	-29.0%
Parole	1,146	1,116	1,069	1,565	-4.4%	-31.7%
Parcom @ CT	174	173	168	178	-3.0%	-5.6%
Furlough	23	12	17	5	29.4%	240.0%
Trans Placement	10	6	13	20	53.8%	-35.0%
Home confinement	0	0	2	0	-	-
Halfway House Total	1,098	1,091	1,101	1,049	0.9%	5.0%
Comm Release	863	855	868	855	1.5%	1.5%
TS	18	16	15	18	-6.7%	-16.7%
Parole	105	102	92	85	-10.9%	8.2%
Transfer Parole	1	0	0	0	-	-
Special Parole	111	118	124	91	4.8%	36.3%
TS Total	755	716	710	952	-0.8%	-25.4%
Special Parole	1,036	1,069	1,092	911	2.1%	19.9%
Total	4,263	4,195	4,180	4,720	-0.4%	-11.4%

TABLE 3 – DOC Admissions and Releases, Monthly Totals*

	2011	2011	2012	2011	% Change	
	Dec.	Jan.	Feb	Feb.	Monthly	Annual
Admissions						
Federal/Other	100	115	104	71	-9.6%	46.5%
Returns	179	204	165	174	-19.1%	-5.2%
Transfer Parole	0	0	0	0	-	-
Parole	38	49	27	55	-44.9%	-50.9%
Trans Plac/Furlough	1	1	0	1	-	-
HWH	46	54	31	29	-42.6%	6.9%
TS	50	41	46	54	12.2%	-14.8%
Special Parole	44	59	61	35	3.4%	74.3%
New Sentence	223	592	422	406	-28.7%	3.9%
VOP	59	168	109	86	-35.1%	26.7%
Pre-trial	1,516	1,686	1,542	1303	-8.5%	18.3%
Total	2,018	2,597	2,233	1,954	-14.0%	14.3%
Releases						
Transfer Parole	11	4	7	35	75.0%	-80.0%
Parole	162	163	127	169	-22.1%	-24.9%
Trans Plac/Furlough	8	14	25	14	78.6%	78.6%
Home Confinement	0	0	2	0	-	-
HWH	184	198	188	155	-5.1%	21.3%
TS	222	233	210	249	-9.9%	-15.7%
Special Parole	103	92	84	67	-8.7%	25.4%
End of Sentence	1,096	919	996	910	8.4%	9.5%
Total	1,786	1,623	1,639	1,599	1.0%	2.5%
Pre-trial Releases*						
Did not return from Court	607	589	550	482	-6.6%	14.1%
Release to Bond	481	433	453	427	4.6%	6.1%

*Monthly totals are measured by occurrence, not by individual.

Board of Pardons and Parole

Parole eligibility among prisoners with sentences greater than 24 months:

Eligible: 8,726, Non-eligible: 826

TABLE 4A – Paroles Granted, New cases

	Hearings	Granted	Rate
DEC	202	160	79%
JAN '12	124	92	74%
FEB	207	177	86%

TABLE 4B – Other Parole Hearings

	Revocations		Rescissions	
	Reparoled	Denied	Reparoled	Denied
DEC	59	30	12	10
JAN '12	36	20	10	11
FEB	31	31	12	13

Public Defender Services

Public Defender (PD) services are provided to "indigent" adults and juveniles at 37 field offices and by six specialized units around the state.

TABLE 5 – PD Cases, Appointed & Disposed

	Cases appointed		Cases disposed	
	GA	JD	GA	JD
NOV	5,262	231	4,044	121
DEC '11	5,295	221	3,875	148
JAN '12	5,941	204	4,494	182

CSSD – Adult Probation

Court Support Services Division: Probation clients in Feb. 2012: 49,484; Feb. 2011: 51,564

TABLE 6 – Monthly CSSD Direct Sentenced & Probationer Community Placements

	Community Based	Out-patient	Inpatient/Resident	Total
	NOV	692	1,008	21
DEC '11	930	1,279	26	2,235
JAN '12	900	1,318	28	2,246

Pre-trial Diversion and Supervision

TABLE 7 – Pre-trial and split sentence starts

	Pre-trial Case Starts	Bail Client Starts	Supv. Split Sentence Starts
	DEC	2,010	2,305
JAN '12	2,500	2,731	552
FEB	2,267	2,419	482

TABLE 8 – The Jail Re-interview Program

	Offenders interviewed	Offenders released	Releases 1 year prior
DEC	1,145	731	647
JAN '12	1,256	670	542
FEB	1,061	689	589

Data Notes: Figures are based on operational data available at the time of this report. Data in subsequent issues may not agree.

CHART 3 – Total Facility Population
 March 1, 2012 to March 7, 2012

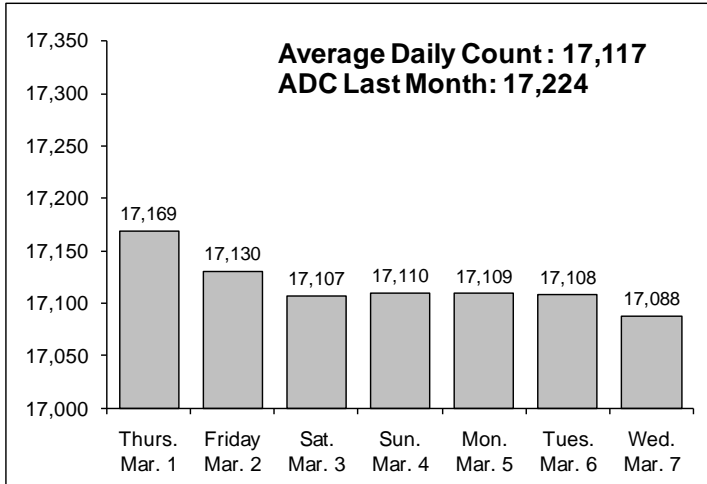


CHART 6 – Monthly DOC Admissions by Type
 Jan. 2011 through Feb. 2012

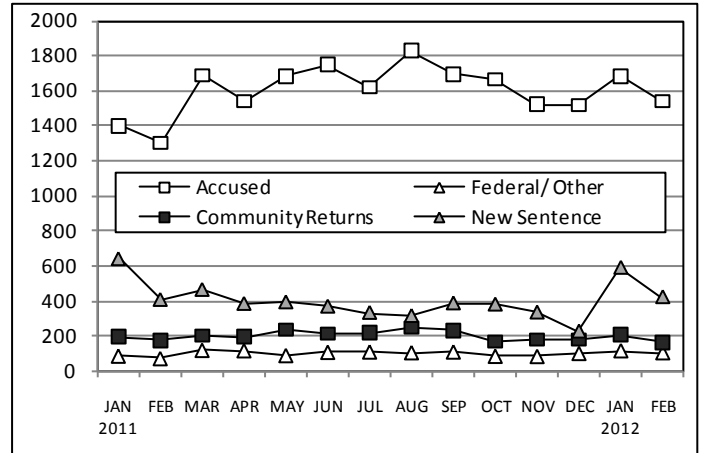


CHART 4 – Prison Population, first-of-month
 January 1 through December 1

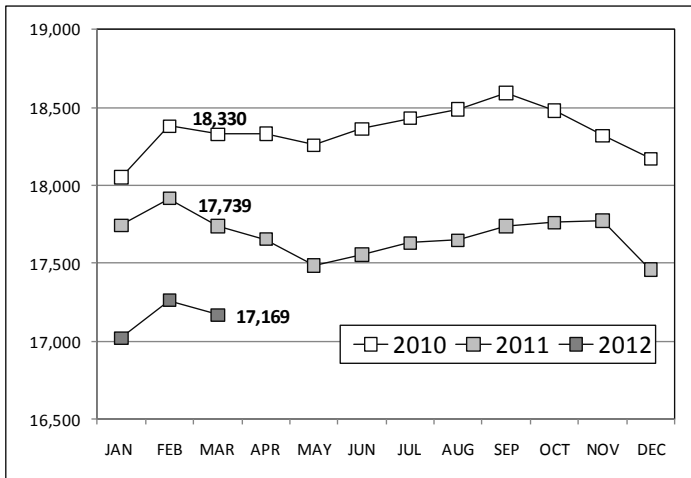


CHART 7 – Readmissions from Community Release
 February 2012

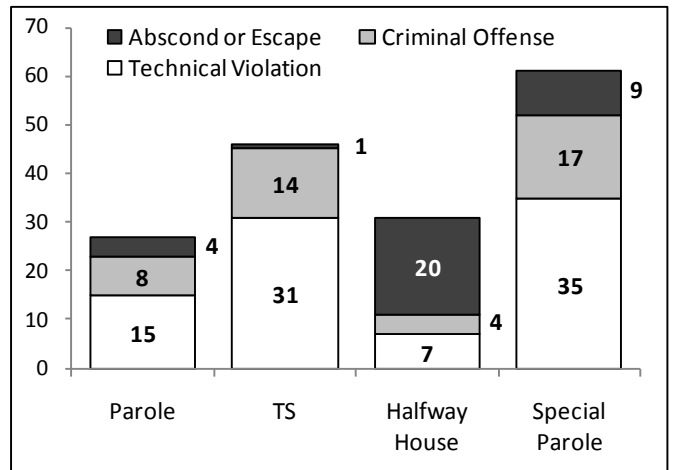


CHART 5 – Monthly, Statewide Criminal Arrests
 2012 against the 3-year average

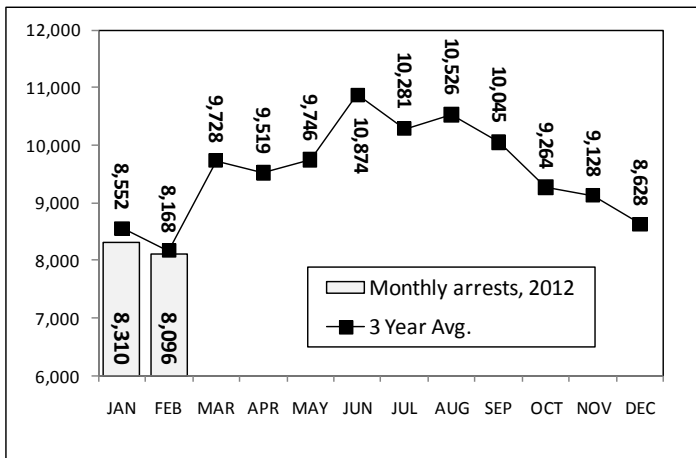
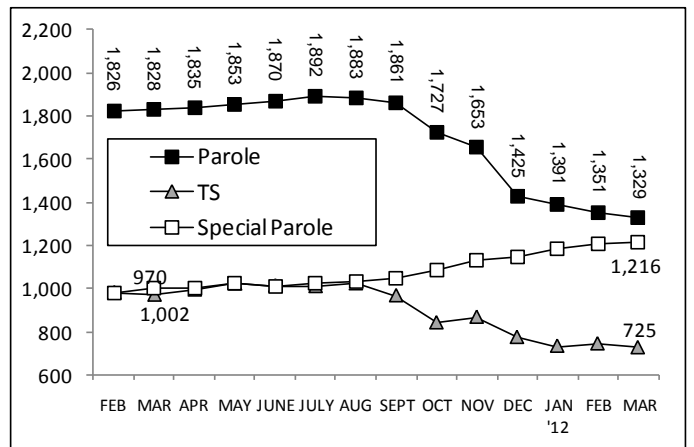


CHART 8 – Parole, TS and Special Parole, supervised cases
 February 1, 2011 through March 1, 2012



Note: Data for all charts, with the exception of Chart 5, was supplied by CT DOC. Data for Chart 5 was provided by Court Operations. Data in Chart 8 includes all offenders under parole jurisdiction.