

OPM - Criminal Justice Policy & Planning Division Monthly Indicators Report



Highlights

- On October 1, 16,714 people were incarcerated in state prisons. Last year, 17,762 people were in prison.
- In September, 402 offenders were discharged from prison having earned at least one day of Risk Reduction Earned Credit (RREC). The average prisoner had his sentence shortened by 43 days.
- 322 offenders, who had already been released to a community supervision program, discharged last month having received RREC. Among this group, the average offender earned 96 days.
- The prison population has been growing since early July. Virtually all the expansion is accounted for by pre-trial prisoners.
- Although the pre-trial population rose, pre-trial prison admissions in September fell by 15% compared to August (see table 3). The number of statewide criminal arrests also declined by 14% in the same period (see chart 2).
- OPM recently calculated recidivism rates for 3,280 offenders who discharged, either from prison or community programs, with at least one day of RREC between October 1, 2011 and January 31, 2012. During the 6-months following their releases, 12.8% were readmitted to prison. In comparison, 20.8% of offenders released or discharged in 2008 returned to prison within 6 months. More on this is available at: www.ct.gov/opm/cjppd.

Please direct any comments, questions or suggestions to:
opm.mir@ct.gov

Prison Population Forecast

The prison population rose in recent months, driven by an increase in the number of pre-trial detainees. OPM anticipates that the prison population will ebb moderately during October.

Between Oct. 1 2011 and Jan. 31, 2012, 1,652 offenders discharged from prison having earned at least one day of RREC. Had these offenders completed their entire sentences in prison, instead of being released to a community program, they would have served an additional 52,406 days in prison.

These 52,406 days, when considered as prisoner-bed days, represent a significant reduction in use of the state's existing capacity to incarcerate offenders. These prisoner bed-days correspond to the prison capacity required to incarcerate 143 inmates for one year, or the prison capacity required to incarcerate 1,723 inmates for one month.

Although the CT DOC views the state's prison-bed capacity as elastic, RREC has exerted a significant downward demand on existing prison-bed capacity. The cumulative effect of RREC was not factored into OPM's February 2012 projection of the prison population.

TABLE 1 --Prison Population Forecast

	Actual (*Avg Daily Count)	Forecast	Diff. %
FEB '12	17,224*	17,224	
MAR	17,117*	17,171	-0.3%
APR	16,973*	17,172	-1.2%
MAY	16,829*	17,100	-1.6%
JUN	16,698*	17,143	-2.6%
JUL	16,586*	17,213	-3.6%
AUG	16,603*	17,238	-3.7%
SEP	16,677*	17,263	-3.4%
OCT	16,745*	17,238	-2.9%
NOV	-	17,121	
DEC	-	17,013	
JAN '13	-	16,587	
FEB	-	16,756	

* Average Daily Count, first week of month

CHART 1 – Actual ADC of the prison population against the OPM forecast
January 1, 2011 through February 1, 2013

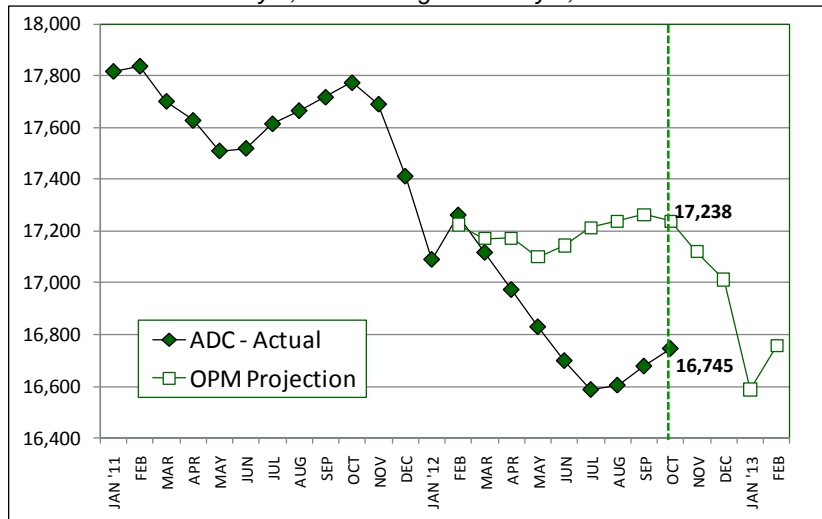
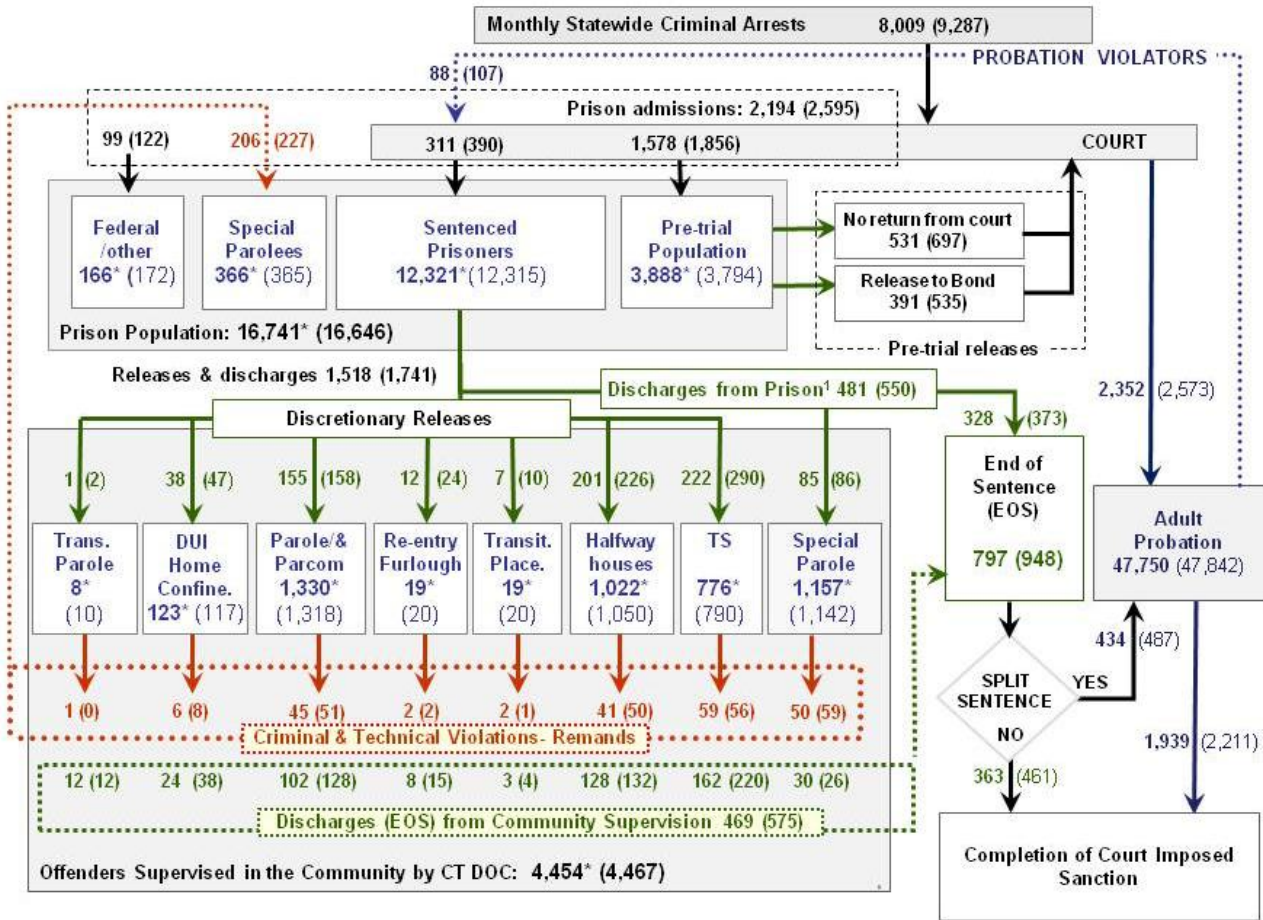


CHART 2 – Connecticut Criminal Justice System – Monthly Overview



This chart contains monthly operational data for September 2012 and daily counts reported on October 1, 2012.

Asterisks (*) indicate October 1st figures. Numbers enclosed by parenthesis are for the previous month.

¹ The DOC reports that 481 offenders discharged (EOS) from DOC facilities during September.

Data sources include: Arrests-OBTS, Court and probation data: CSSD, all other data CT DOC

CHART 2A – Sentenced prisoner – November 2010 through October 2012

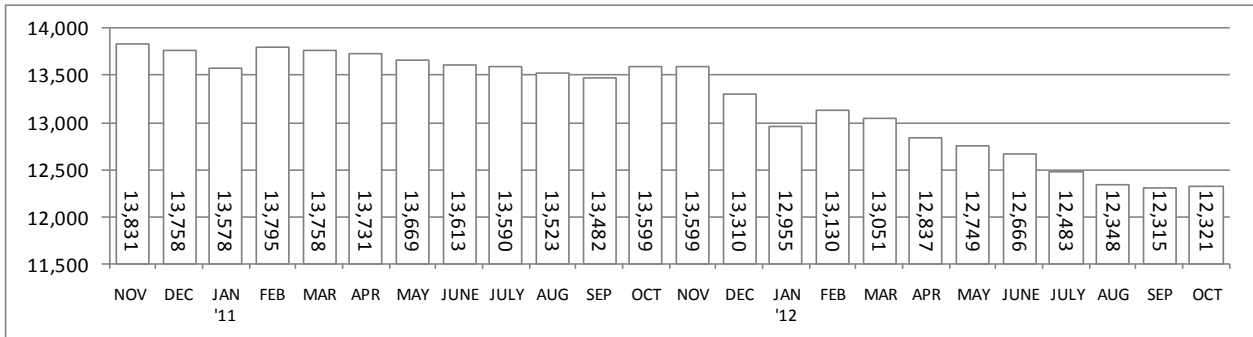


CHART 2B – Pre-trial prisoners – November 2010 through October 2012

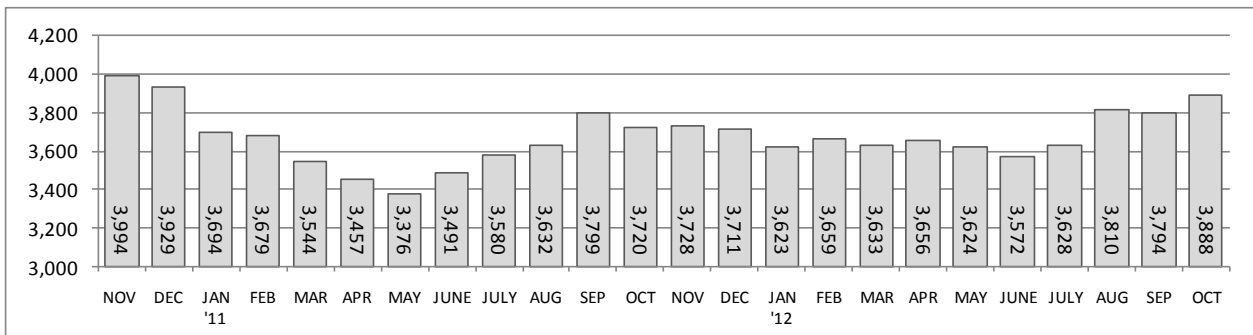


TABLE 2 – DOC Population Counts, First of the Month

	2012	2012	2012	2011	% Change	
	Aug. 1	Sept. 1	Oct. 1	Oct. 1	Monthly	Annual
DOC Facilities						
Federal/Other	158	172	166	149	-3.5%	11.4%
Sentenced	12,348	12,315	12,321	13,599	0.0%	-9.4%
Special Parole	344	365	366	294	0.3%	24.5%
Pre-trial	3,810	3,794	3,888	3,720	2.5%	4.5%
Total	16,660	16,646	16,741	17,762	0.6%	-5.7%
DOC Community						
Transfer Parole	9	10	8	21	-20.0%	-61.9%
Parole/ Parcom Total	1,352	1,318	1,330	1,618	0.9%	-17.8%
Parole	1,181	1,152	1,161	1,443	0.8%	-19.5%
Parcom @ CT	171	166	169	175	1.8%	-3.4%
Furlough	33	20	19	6	-5.0%	216.7%
Trans Placement	17	20	19	7	-5.0%	171.4%
Home confinement/DUI	116	117	123	0	5.1%	-
Halfway House Total	1,038	1,050	1,022	1,117	-2.7%	-8.5%
Comm Release	831	855	825	881	-3.5%	-6.4%
TS	7	9	11	19	22.2%	-42.1%
Parole	83	80	78	109	-2.5%	-28.4%
Transfer Parole	0	0	0	1	-	-
Special Parole	117	106	108	107	1.9%	0.9%
TS Total	775	790	776	822	-1.8%	-5.6%
Special Parole	1,141	1,142	1,157	982	1.3%	17.8%
Total	4,481	4,467	4,454	4,573	-0.3%	-2.6%

TABLE 3 – DOC Admissions and Releases, Monthly Totals*

	2012	2012	2012	2011	% Change	
	July	Aug.	Sept.	Sept.	Monthly	Annual
Admissions						
Federal/Other	101	122	99	108	-18.9%	-8.3%
Returns	227	227	206	233	-9.3%	-11.6%
Trans. Parole / DUI	10	8	7	0	-	-
Parole	46	51	45	77	-11.8%	-41.6%
Trans Plac/Furlough	1	3	4	1	-	-
HWH	56	50	41	37	-18.0%	10.8%
TS	62	56	59	75	5.4%	-21.3%
Special Parole	52	59	50	43	-15.3%	16.3%
New Sentence	282	390	311	386	-20.3%	-19.4%
VOP	88	107	88	121	-17.8%	-27.3%
Pre-trial	1,824	1,856	1,578	1696	-15.0%	-7.0%
Total	2,434	2,595	2,194	2,423	-15.5%	-9.5%
Releases						
Transfer Parole	5	2	1	11	-	-90.9%
Parole	157	158	155	193	-1.9%	-19.7%
Furlough	30	24	12	7	-50.0%	71.4%
Transfer Placement	6	10	7	3	-30.0%	133.3%
Home Confinement DUI	38	47	38	0	-19.1%	-
HWH	196	226	201	213	-11.1%	-5.6%
TS	263	290	222	227	-23.4%	-2.2%
Special Parole	85	86	85	101	-1.2%	-15.8%
End of Sentence	838	948	797	1117	-15.9%	-28.6%
Total	1,618	1,791	1,518	1,872	-15.2%	-18.9%
Pre-trial Releases*						
Did not return from Court	598	697	531	592	-23.8%	-10.3%
Release to Bond	495	535	391	523	-26.9%	-25.2%

*Monthly totals count occurrences, not individuals.

Board of Pardons and Parole

TABLE 4 – Inmates with sentences greater than 24 months

	Parole eligible	Not eligible
AUG	8,338	840
SEPT	8,326	841
OCT	8,289	842

TABLE 4A – Parole hearings

	Hearings	Granted	Rate
JULY	197	149	76%
AUG	211	151	72%
SEPT	157	104	66%

TABLE 4B – Other Parole Hearings

	Revocations		Rescissions	
	Reparoled	Denied	Reparoled	Denied
JUL	41	21	9	9
AUG	63	33	23	14
SEP	27	20	14	11

DOC - Sentenced admits

TABLE 5 – Prison sentences by crime type

Offense types	Sept.	Aug.	July
Against persons	50	46	43
Against property	52	52	48
Drug related	157	223	143
Public order	75	96	68
Other	22	20	20
Total sentences	356	437	322

CSSD – Adult Probation

TABLE 6 – Pre-trial and split sentence starts

	Pre-trial Bail Case Starts	Client Supv. Starts	Split Sentence Starts
	JULY	2,485	2,496
AUG	2,660	2,573	487
SEPT	2,129	2,352	434

Pre-trial Diversion and Supervision

TABLE 7 – The Jail Re-interview Program

	Offenders interviewed	Offenders released	Releases last year
JULY	1,284	709	713
AUG	1,315	817	716
SEPT	1,135	620	807

Data Notes: Figures are based on operational data available at the time of this report. Data in subsequent issues may not agree.

DUI home confinement

TABLE 8 – Releases and discharges

	Monthly releases to...	On home confinement, 1st of month	Monthly discharges from ...
JUL	38	119	33
AUG	47	116	38
SEP	38	117	24
OCT	-	123	

Source: CT DOC

CHART 3 – Prison Population
October 1, 2012 to October 7, 2012

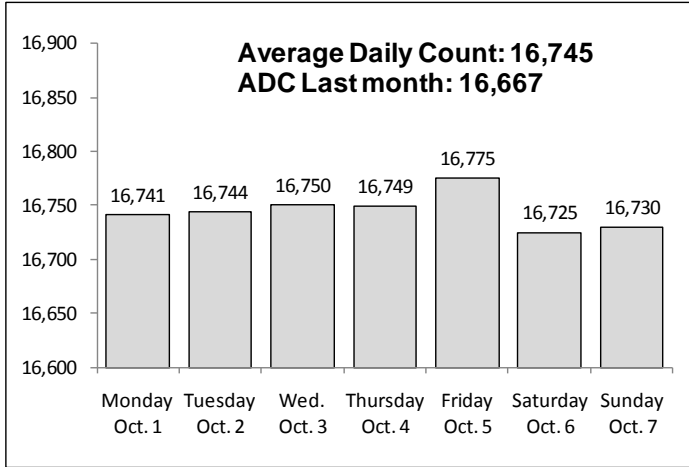


CHART 6 – Monthly DOC Admissions by Type
Aug. 2011 through Sept. 2012

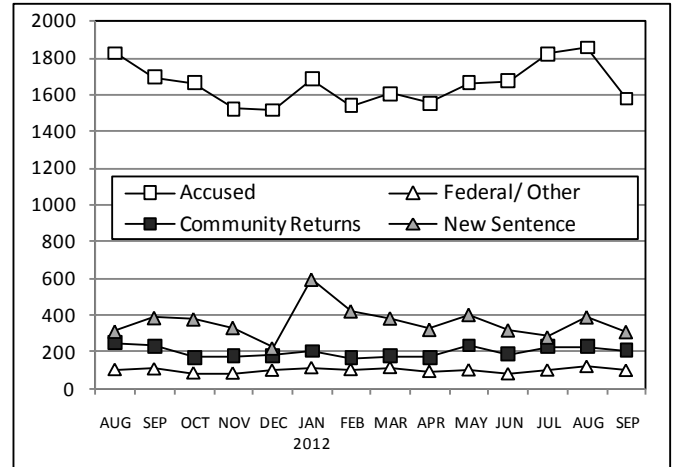


CHART 4 – Prison Population, first-of-month
January 1 through December 1

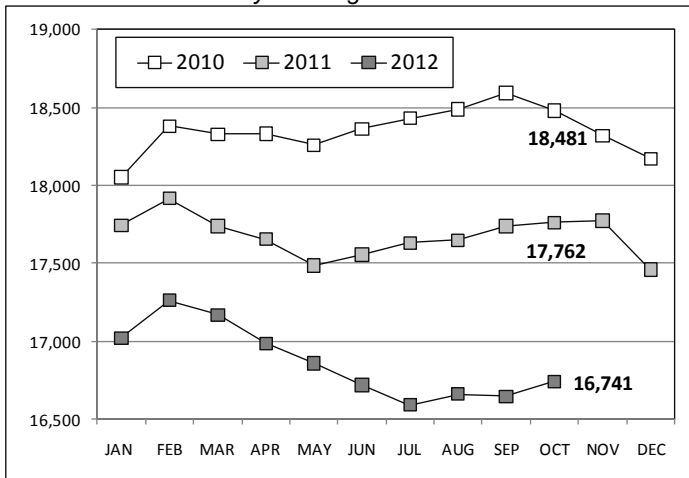


CHART 7 – Readmissions from Community Release
September 2012

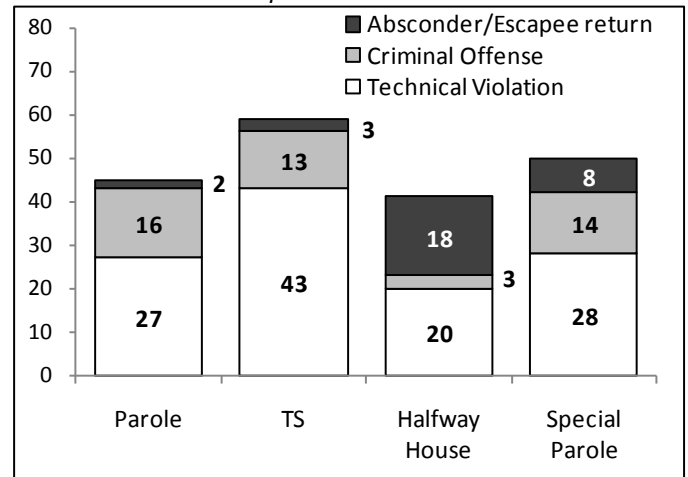


CHART 5 – Monthly Statewide Criminal Arrests
2011 versus 2012

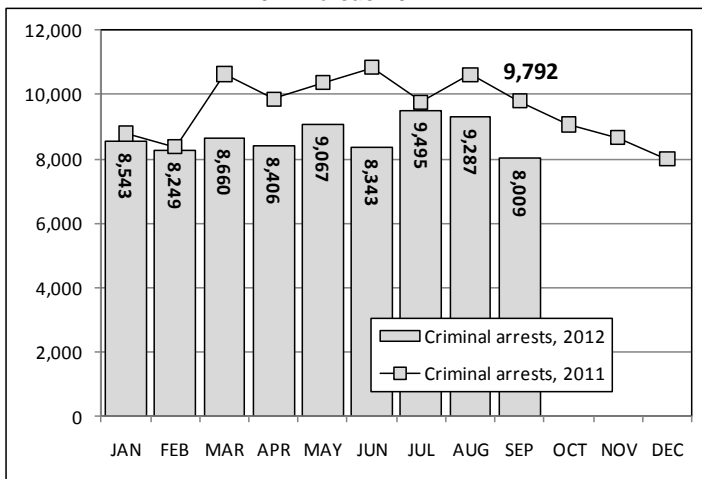
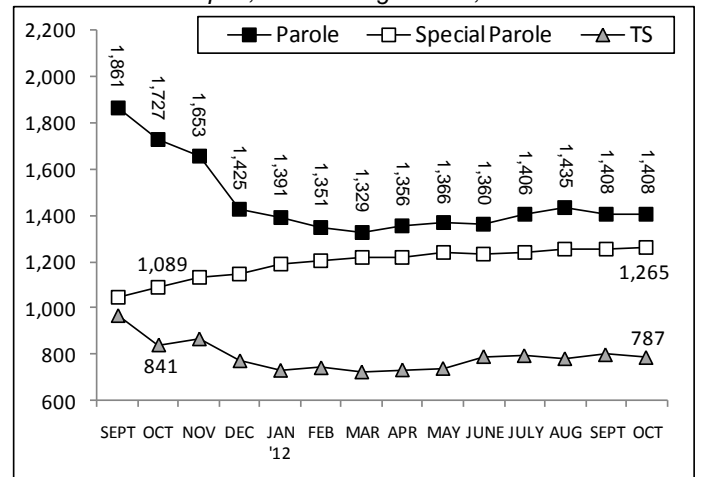


CHART 8 – Parole, TS and Special Parole, supervised cases
Sept. 1, 2011 through Oct. 1, 2012



Note: Data for all charts, with the exception of Chart 5, was supplied by CT DOC. Data for Chart 5 is based on new case starts in the state Offender-Based Tracking System (OBTS).