

OPM - Criminal Justice Policy & Planning Division

Monthly Indicators Report

Highlights

- The prison population dropped by 317 inmates during November. On December 1st, 16,786 men and women were incarcerated in state prisons.
- Last month, Gov. Malloy appointed James Dzurenda as Commissioner of the Department of Correction. Dzurenda, a former corrections officer and warden, had been serving in an interim capacity since April following the retirement of Commissioner Leo Arnone.
- As a result of change-the-age legislation, the number of prisoners, under age 18, who are confined in adult prisons has declined significantly over the past five years (see chart 2a).
- Arrests and pre-trial admissions to prison were both down significantly in November. Pre-trial admits for the month dropped from 1,627 in October to 1,305 in November (see chart 2).
- The number of offenders on Special Parole continues to grow. Over the last year, the number of offenders on regular parole decreased by 19.1% and the numbers of offenders on TS declined by 15.5%. During the same period, the number of offenders on special parole increased by 3.2% (see table 2).
- OPM's Criminal Justice Policy & Planning Division is working on next year's prison population forecast which be published in February 2014.

To contact the **Monthly Indicators Report**, please email: opm.mir@ct.gov

Prison Population Forecast

The Average Daily Count for the first week of the month dropped below 17,000 for the first time since June.

Following the historical pattern, the prison population has dropped considerably over the past two months. Between October 1 and December 1, the total prison population shrank by 418 prisoners. During that period, the number of the number of pre-trial offenders dropped by 396 (see table 2).

OPM currently believes that the prison population will settle in a range between 16,500 and 16,600 by the end of December. OPM also expects the prison population to rebound in January as the courts return to their normal schedules after the holidays.

TABLE 1 – Prison Population Forecast

	Avg. Daily Count	OPM 2012 Forecast	Inmate difference
JAN '13	16,347	16,347	0
FEB	16,712	16,763	-51
MAR	16,619	16,673	-54
APR	16,597	16,655	-58
MAY	16,731	16,551	180
JUN	16,884	16,522	362
JUL	17,007	16,515	492
AUG	17,115	16,530	585
SEP	17,068	16,584	484
OCT	17,146	16,635	511
NOV	17,058	16,500	558
DEC	16,790	16,314	476
JAN '14		16,010	-
FEB		16,215	-

Avg. Daily Count (ADC) for 1st week of month

The prison population during 2013 exceeded OPM's February projection for a greater part of the year. OPM's forecasts are produced each year to provide an objective measure which can be used to gauge the on-going, operational performance of the prison system. In April of this year, OPM was able to detect that the system was not operating at previously anticipated levels.

Chart 1 – Actual ADC of the prison population against the OPM forecast January 1, 2012 through February 1, 2014

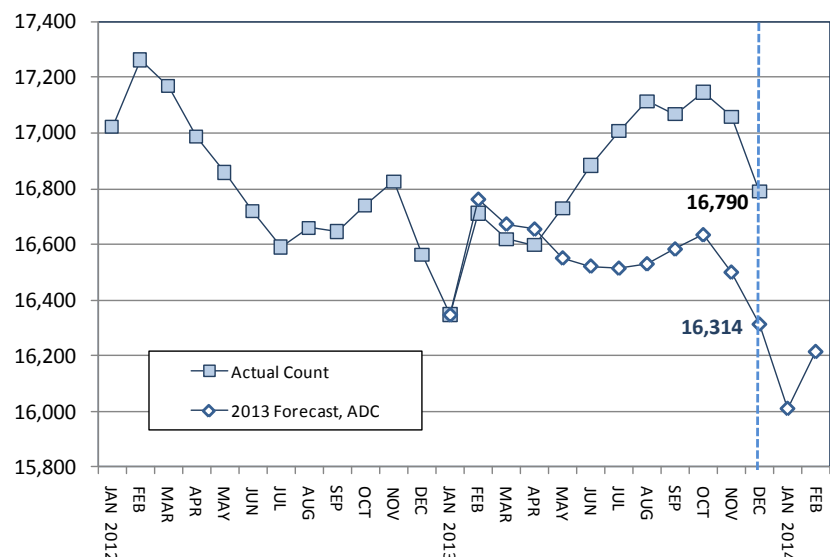
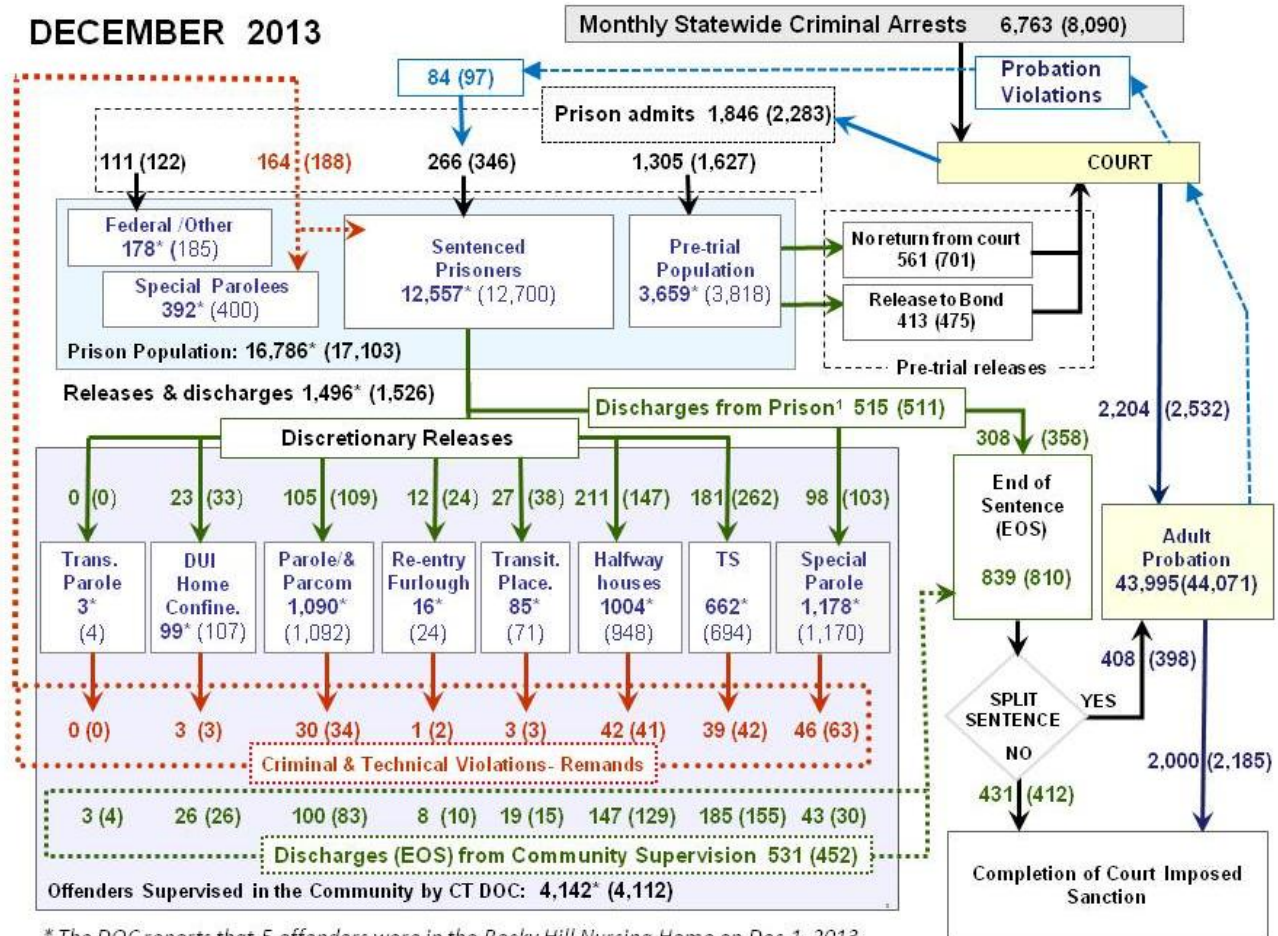


Chart 2 - Criminal justice, monthly flows



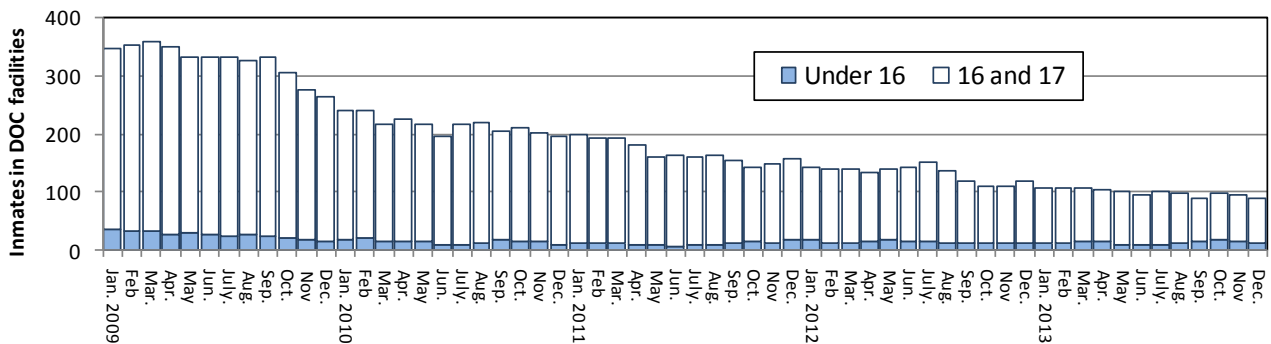
* The DOC reports that 5 offenders were in the Rocky Hill Nursing Home on Dec.1, 2013.

This chart contains monthly operational data for November 2013 and daily counts reported on December 1, 2013. Figures followed by asterisks (*) indicate the daily count on December 1st. Figures for the previous month are enclosed by parentheses.

¹DOC facility reports indicate that 515 sentenced offenders discharged (EOS) from DOC facilities during the month.

Sources of the data: Arrests - OBTS, Court and probation data - CSSD, all other data - CT DOC

Chart 2a – Impact of change-the-age on the size of the young inmate population



In 2007, the Connecticut Legislature raised the age of juvenile jurisdiction from 16 to 18. At the time, Connecticut was one of only three states that allowed youths, who were under the age eighteen, to be tried in the adult criminal justice system. The legislation became effective in July 2009.

During an average month in 2009, there were 326 offenders under the age of 18 incarcerated in DOC facilities. By 2011, that number had dropped to 168.

On December 1, 2013 there were 13 inmates in DOC facilities who were younger than 16; 11 were pre-trial detainees, 2 were serving prison sentences, all were male. There were also 76 offenders in state adult prisons who were 16 or 17 years old. Among this age group, 36 were pre-trial detainees, 39 were sentenced inmates and 1 was on remand from special parole. There was only one female among the offenders aged 16 or 17. Among prisoners under the age of 18, 91% were members of minority groups.

Table 2 – The first-of-the-month population counts

	2013	2013	2013	2012	% Change	
	Oct. 1	Nov. 1	Dec.1	Dec.1	Monthly	Annual
DOC Facilities						
Federal/Other	199	185	178	172	-3.8%	3.5%
Sentenced	12,544	12,700	12,557	12,310	-1.1%	2.0%
Special Parole	406	400	392	373	-2.0%	5.1%
Pre-trial	4,055	3,818	3,659	3,708	-4.2%	-1.3%
Total	17,204	17,103	16,786	16,563	-1.9%	1.3%
DOC Community						
Transfer Parole	3	4	3	7	-	-
Parole/ Parcom Tot:	1,086	1,092	1,090	1,315	-0.2%	-17.1%
Parole	922	927	930	1,150	0.3%	-19.1%
Parcom @ CT	164	165	160	165	-3.0%	-3.0%
Furlough	13	24	16	18	-33.3%	-11.1%
Trans Placement	61	71	85	25	19.7%	240.0%
DUI/Home confine.	102	107	99	140	-7.5%	-29.3%
Halfway House Tota	1,034	948	1,004	1,027	5.9%	-2.2%
Comm Release	771	694	746	815	7.5%	-8.5%
TS	31	32	29	10	-9.4%	190.0%
Parole	91	87	81	84	-6.9%	-3.6%
Transfer Parole	0	0	0	0	-	-
Special Parole	141	135	148	118	9.6%	25.4%
TS Total	629	694	662	783	-4.6%	-15.5%
Nursing home	2	2	5	0	-	-
Special Parole	1,160	1,170	1,178	1,142	0.7%	3.2%
Total	4,090	4,112	4,142	4,457	0.7%	-7.1%

Table 3 – Monthly admissions, releases and discharges*

	2013	2013	2013	2012	% Change	
	Sept.	Oct.	Nov.	Nov.	Monthly	Annual
Admissions						
Federal/Other	96	122	111	94	-9.0%	18.1%
Returns	200	188	164	190	-12.8%	-13.7%
Trans.Parole / DUI	3	3	3	6	-	-
Parole	35	34	30	36	-11.8%	-16.7%
Trans Plac/Furloug	1	5	4	1	-	-
HWH	59	41	42	41	2.4%	2.4%
TS	34	42	39	53	-7.1%	-26.4%
Special Parole	68	63	46	53	-27.0%	-13.2%
New Sentence	329	346	266	328	-23.1%	-18.9%
VOP	99	97	84	89	-13.4%	-5.6%
Pre-trial	1,686	1,627	1,305	1,396	-19.8%	-6.5%
Total	2,311	2,283	1,846	2,008	-19.1%	-8.1%
Releases						
Transfer Parole	0	0	0	1	-	-
Parole	115	109	105	140	-3.7%	-25.0%
Furlough	16	24	12	17	-50.0%	-29.4%
Transfer Placement	25	38	27	13	-28.9%	107.7%
Home Confinement DL	32	33	23	41	-30.3%	-43.9%
HWH	174	147	211	210	43.5%	0.5%
TS	181	262	181	251	-30.9%	-27.9%
Special Parole	81	103	98	89	-4.9%	10.1%
Nursing home	0	0	0	0	-	-
End of Sentence	749	810	839	879	3.6%	-4.6%
Total	1,373	1,526	1,496	1,641	-2.0%	-8.8%
Pre-trial Releases*						
No return from Court	579	701	561	600	-20.0%	-6.5%
Release to Bond	439	475	413	433	-13.1%	-4.6%

* Totals reflect events not individuals.

Board of Pardons and Paroles

Table 4a – Inmates with sentences > 24 months

	Parole eligible	Not eligible
Oct.	8,418	859
Nov.	8,479	862
Dec.	8,459	859

Table 4b – New Parole hearings

	Hearings	Granted	Rate
Sept.	175	128	73%
Oct.	159	125	79%
Nov.	170	124	73%

Table 4c – Other parole actions

	Reparole from revocation	Reparole from rescission	Closed interest cases	Special parole cases
Sept.	62	12	55	15
Oct.	40	11	70	10
Nov.	30	9	23	20

Pre-trial detainees

Table 5 – Pre-trial prisoners with bonds

	Sept. 1, 2013	Oct. 1, 2013	Nov. 1, 2013	Dec. 1, 2013
Bond amount				
Less than \$20K	713	713	664	600
\$20K to < \$50K	665	667	630	621
\$50K to <\$100K	854	856	791	758
\$100K or higher	1,768	1,794	1,732	1,683
Over \$1M	211	211	208	208
Offenders	4,000	4,030	3,817	3,870

Table 5a – Pre-trial prisoners, length-of-stay

Weeks since last DOC admit	Sept. 1, 2013	Oct. 1, 2013	Nov. 1, 2013	Dec. 1, 2013
< 1 week	537	498	420	454
1 to < 3 weeks	487	476	395	384
3 to < 10 weeks	1,012	1,087	1,023	902
10 to < 30 weeks	1,146	1,148	1,179	1,106
30 wks or more	818	824	805	820
	4,000	4,033	3,822	3,666

Court Support Services Division

Table 6 – The Jail Re-interview Program

	Offenders interviewed	Offenders released	Releases last year
Sept.	1,703	946	620
Oct.	1,864	1,081	659
Nov.	1,457	917	807

Table 7 – Pre-Trial & split-sentence starts

	Pre-trial Bail Case Starts	Client Supv. Starts	Split Sentence Starts
Sept.	2,319	2,190	426
Oct.	2,652	2,532	398
Nov.	2,218	2,204	408

Note: Figures published here are based on operational data available at the time of publication. Data in subsequent issues may not agree.

Chart 3 – Prison Population
December 1, 2013 to December 7, 2013

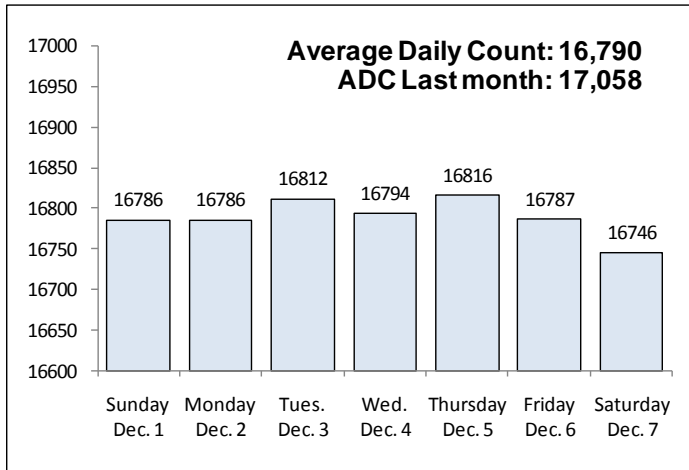


Chart 6 – Monthly DOC Admissions
October 2012 through November 2013

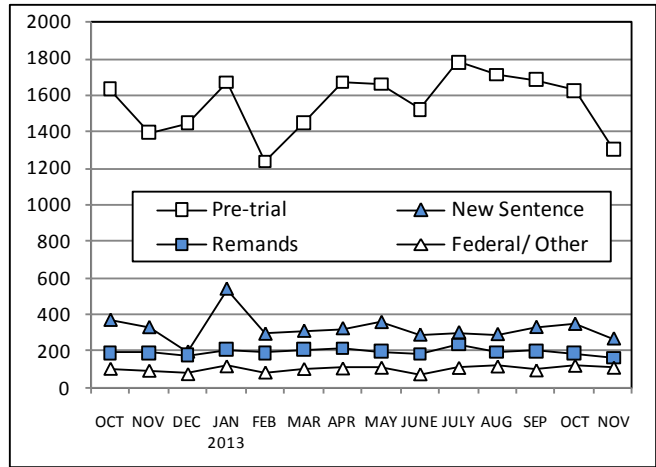


Chart 4 – Prison Population, first-of-month
2011 through 2013

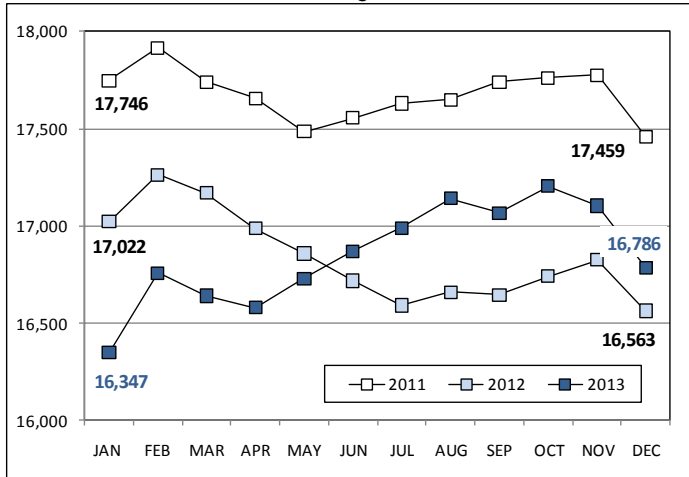


Chart 7 – Remands from Community Release
November 2013

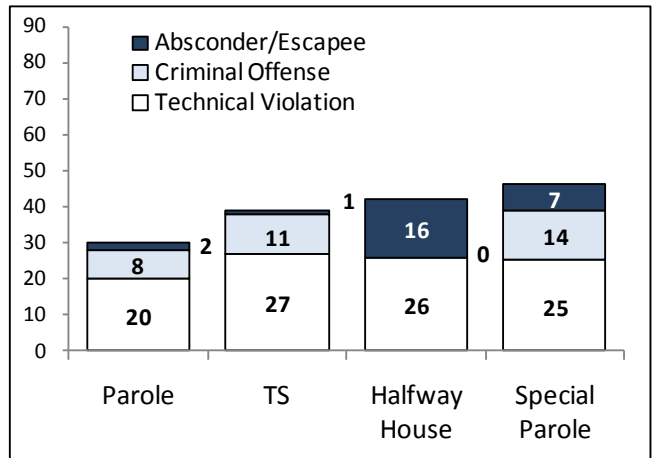


Chart 5 – Monthly Statewide Criminal Arrests
2012 versus 2013

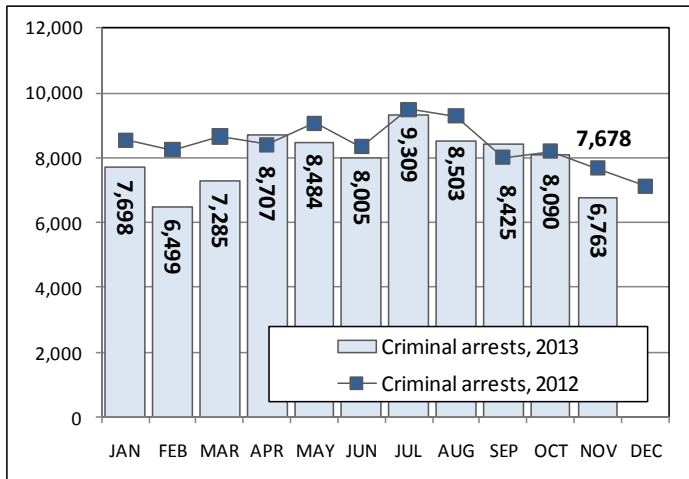
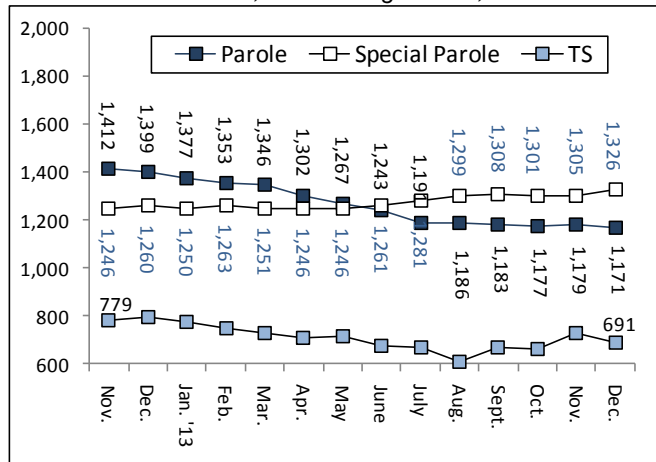


Chart 8 – Parole, TS and Special Parole, supervised cases
Nov. 1, 2012 through Dec. 1, 2013



Note: Data for all charts, with the exception of Chart 5, was supplied by CT DOC. Data for Chart 5 is based on new case starts in the state Offender-Based Tracking System (OBTS). Chart 8 includes offenders in halfway houses.