

OPM - Criminal Justice Policy & Planning Division

Monthly Indicators Report

Highlights

- The prison population stood at 17,204 October 1, 2013, an increase of 139 prisoners during the month. In September sentenced population grew by 32; the pre-trial population increased by 113. During August, the sentenced population fell by 137.
- The Board of Pardons and Paroles (BoPP) closed interest in 262 cases in July and 413 in August. Last month, they closed interest in 55 cases (see table 4c).
- Arrests were down in September from August. Compared to last September, however, arrests rose moderately (see chart 5). Overall, arrests have been declining for some time. This year, between the beginning of January and the end of September, law enforcement agencies in CT made 72,915 arrests. During the same period in 2011, they made 89,059 arrests. In 2012 they made 78,059 arrests.
- There were 4,055 pre-trial detainees in state prisons on October 1st. Although this number is expected to drop in the coming months, it remains unclear why the pre-trial population remains as high as it does each summer given a decline in the number of pre-trial prison admissions
- Northern CI has been repurposed over the past year. Once known as the state's "Supermax", the prison now houses most of the state's high-bond, pre-trial prisoners.

To contact the **Monthly Indicators Report**, please email: opm.mir@ct.gov

Prison Population Forecast

Between January 1 and October 1 of this year, the prison system added 857 prisoners. In the last 20 years, the prison system has expanded at a greater pace only six times, and in five of those years, Connecticut was still adding new prison capacity (see chart 2a).

Strategic management of the state's prison population does not require big science. With very few resources, OPM has developed a simple, but useful, input-output model of the prison system that established benchmarks of system performance. In recent years, this model has been useful, helping to pinpoint the causes of many fluctuations in the prison population. The existing model could be expanded, but to date the resources required to do this are lacking.

TABLE 1 – Prison Population Forecast

	Avg. Daily Count	OPM 2012 Forecast	Inmate difference
JAN '13	16,347	16,347	0
FEB	16,712	16,763	-51
MAR	16,619	16,673	-54
APR	16,597	16,655	-58
MAY	16,731	16,551	180
JUN	16,884	16,522	362
JUL	17,007	16,515	492
AUG	17,115	16,530	585
SEP	17,068	16,584	484
OCT	17,146	16,635	511
NOV		16,500	-
DEC		16,314	-
JAN '14		16,010	-
FEB		16,215	-

Avg. Daily Count (ADC) for 1st week of month

Were we to calculate the costs associated with incarcerating an additional 500 prisoners for several extra months, we might discover that incredible savings could have been realized had the state invested in developing the capability to understand the operations and processes of the state's prison system. In this regard, Executive Branch criminal justice agencies are far behind the existing capabilities of the Court Support Services Division (CSSD) at the Judicial Branch.

Chart 1 – Actual ADC of the prison population against the OPM forecast
January 1, 2012 through February 1, 2014

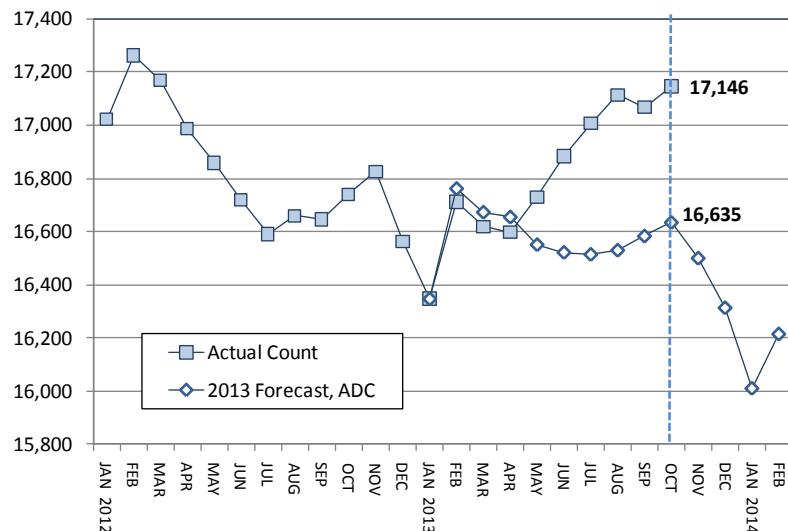
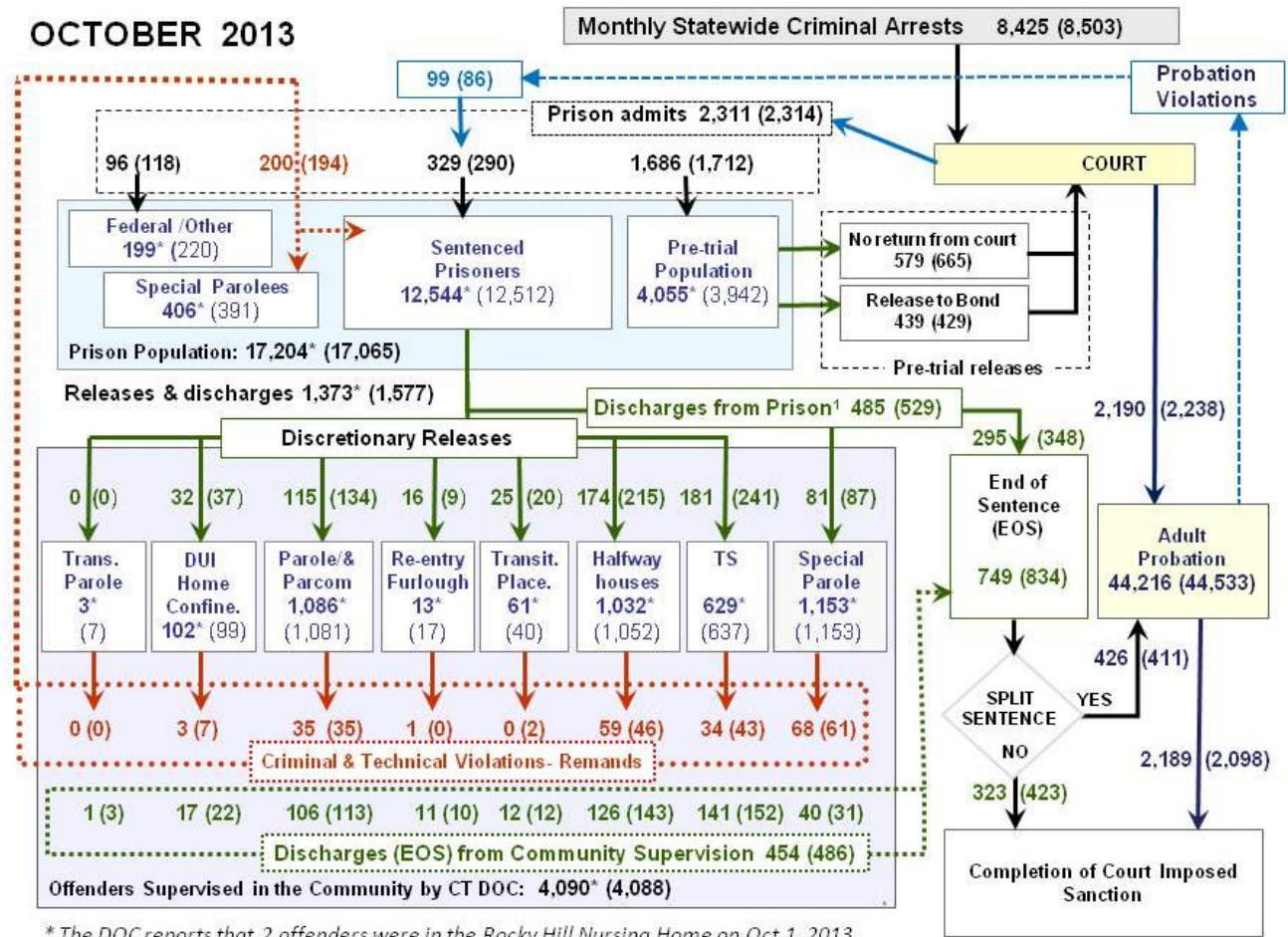
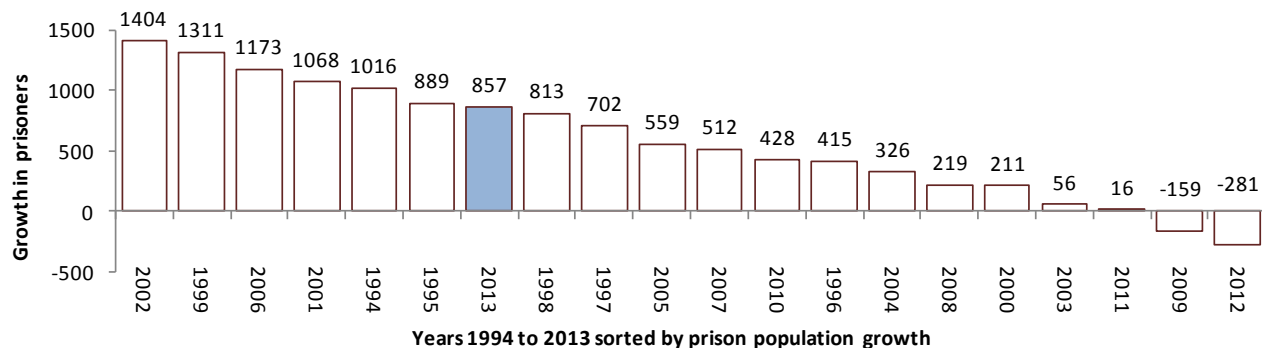


Chart 2 - Criminal justice, monthly flows



This chart contains monthly operational data for September 2013 and daily counts reported on October 1, 2013. Asterisks (*) indicate the daily count on October 1st. Figures for the previous month are enclosed by parentheses.
 *DOC facility reports indicate that 485 sentenced offenders discharged (EOS) from DOC facilities during the month.
 Sources of the data: Arrests - OBTS, Court and probation data - CSSD, all other data - CT DOC

Chart 2a – New change in prison population between Jan. 1 and Oct. 1, 1994 through 2013



Between the first of the year and October 1, the state's prison population increased by 857. Coincidentally, there are approximately 750 prisoners currently sleeping in non-traditional housing areas such as gymnasiums, dining halls and day rooms.

In general, an expansion of prison-bed capacity and rising fear of crime are the two most common causes of rapid growth in the prison population.

Neither, however, explains what we have witnessed this past year at the DOC. One needs to look no further than chart 2 (above) to see that the flow of prisoners into and out of the prison system is a complex one.

Given the slow response to a rapidly, though steadily, increasing prison population suggests that the system, as it is currently configured, is simply too complex to manage effectively.

Table 2 – The first-of-the-month population counts

	2013	2013	2013	2012	% Change	
	Aug. 1	Sep. 1	Oct. 1	Oct. 1	Monthly	Annual
DOC Facilities						
Federal/Other	212	220	199	166	-9.5%	19.9%
Sentenced	12,649	12,512	12,544	12,321	0.3%	1.8%
Special Parole	394	391	406	366	3.8%	10.9%
Pre-trial	3,887	3,942	4,055	3,888	2.9%	4.3%
Total	17,142	17,065	17,204	16,741	0.8%	2.8%
DOC Community						
Transfer Parole	7	7	3	8	-	-
Parole/ Parcom Tot:	1,093	1,081	1,086	1,330	0.5%	-18.3%
Parole	926	919	922	1,161	0.3%	-20.6%
Parcom @ CT	167	162	164	169	1.2%	-3.0%
Furlough	11	17	13	19	-23.5%	-31.6%
Trans Placement	26	40	61	19	52.5%	221.1%
DUI/Home confine.	99	99	102	123	3.0%	-17.1%
Halfway House Tota	1,015	1,052	1,034	1,022	-1.7%	1.2%
Comm Release	756	766	771	825	0.7%	-6.5%
TS	17	29	31	11	6.9%	181.8%
Parole	93	102	91	78	-10.8%	16.7%
Transfer Parole	0	0	0	0	-	-
Special Parole	149	155	141	108	-9.0%	30.6%
TS Total	595	637	629	776	-1.3%	-18.9%
Nursing home	2	2	2	0	-	-
Special Parole	1,150	1,153	1,160	1,157	0.6%	0.3%
Total	3,998	4,088	4,090	4,454	0.0%	-8.2%

Table 3 – Monthly admissions, releases and discharges*

	2013	2013	2013	2012	% Change	
	July	Aug.	Sept.	Sept.	Monthly	Annual
Admissions						
Federal/Other	110	118	96	99	-18.6%	-3.0%
Returns	234	194	200	206	3.1%	-2.9%
Trans.Parole / DUI	3	7	3	7	-	-
Parole	27	35	35	45	0.0%	-22.2%
Trans Plac/Furloug	3	2	1	4	-	-
HWH	68	46	59	41	28.3%	43.9%
TS	70	43	34	59	-20.9%	-42.4%
Special Parole	63	61	68	50	11.5%	36.0%
New Sentence	300	290	329	311	13.4%	5.8%
VOP	95	86	99	88	15.1%	12.5%
Pre-trial	1,782	1,712	1,686	1,578	-1.5%	6.8%
Total	2,426	2,314	2,311	2,194	-0.1%	5.3%
Releases						
Transfer Parole	1	0	0	1	-	-
Parole	116	134	115	155	-14.2%	-25.8%
Furlough	10	9	16	12	77.8%	33.3%
Transfer Placement	13	20	25	7	25.0%	257.1%
Home Confinement DL	34	37	32	38	-13.5%	-15.8%
HWH	169	215	174	201	-19.1%	-13.4%
TS	189	241	181	222	-24.9%	-18.5%
Special Parole	101	87	81	85	-6.9%	-4.7%
Nursing home	2	0	0	0	-	-
End of Sentence	827	834	749	797	-10.2%	-6.0%
Total	1,462	1,577	1,373	1,518	-12.9%	-9.6%
Pre-trial Releases*						
Did not return from Cot	666	665	579	531	-12.9%	9.0%
Release to Bond	466	429	439	391	2.3%	12.3%

* Totals reflect events not individuals.

Board of Pardons and Paroles

Table 4a – Inmates with sentences > 24 months

	Parole eligible	Not eligible
August	8,471	862
Sept.	8,446	860
Oct.	8,418	859

Table 4b – Parole hearings

	Hearings	Granted	Rate
July	139	106	76%
Aug.	167	124	74%
Sept.	175	128	73%

Table 4c – Other parole actions

	Reparole from revocation	Reparole from rescission	Closed interest cases	Special parole cases
July	46	3	262	21
Aug.	56	7	413	36
Sept.	62	12	55	15

Pre-trial detainees

Table 5 – Pre-trial prisoners with bonds

Bond amount	July 1, 2013	Aug. 1 2013	Sept. 1, 2013	Oct. 1, 2013
Less than \$20K	16.9%	17.3%	17.8%	17.7%
\$20K to < \$50K	17.3%	17.7%	16.6%	16.6%
\$50K to <\$100K	20.9%	21.2%	21.4%	21.2%
\$100K or higher	44.9%	43.9%	44.2%	44.5%
Over \$1M	5.7%	5.5%	5.3%	5.2%
Offenders	3,921	3,938	4,000	4,030

Table 5a – Pre-trial prisoners, length-of-stay

Weeks since last DOC admit	July 1, 2013	Aug. 1, 2013	Sept. 1, 2013	Oct. 1, 2013
< 1 week	13.8%	13.8%	13.4%	12.3%
1 to < 3 weeks	11.8%	11.5%	12.2%	11.8%
3 to < 10 weeks	27.1%	26.3%	25.3%	27.0%
10 to < 30 weeks	27.2%	28.1%	28.7%	28.5%
30 wks or more	20.0%	20.3%	20.5%	20.4%
	100%	100%	100%	100%

Court Support Services Division

Table 6 – The Jail Re-interview Program

	Offenders interviewed	Offenders released	Releases last year
July	1,824	1,016	709
Aug.	1,756	998	817
Sept.	1,703	946	620

Table 7 – Pre-Trial & split-sentence starts

	Pre-trial Bail Case Starts	Client Supv. Starts	Split Sentence Starts
July	2,670	2,381	470
Aug.	2,576	2,238	411
Sept.	2,319	2,190	426

Note: Figures published here are based on operational data available at the time of publication. Data in subsequent issues may not agree.

Chart 3 – Prison Population
October 1, 2013 to October 7, 2013

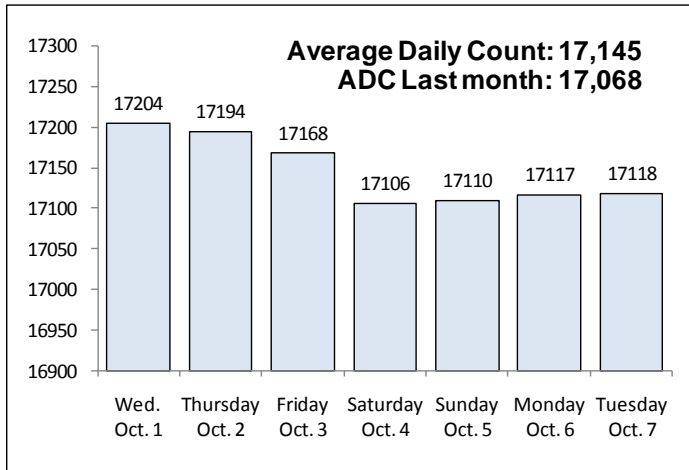


Chart 6 – Monthly DOC Admissions
August 2012 through September 2013

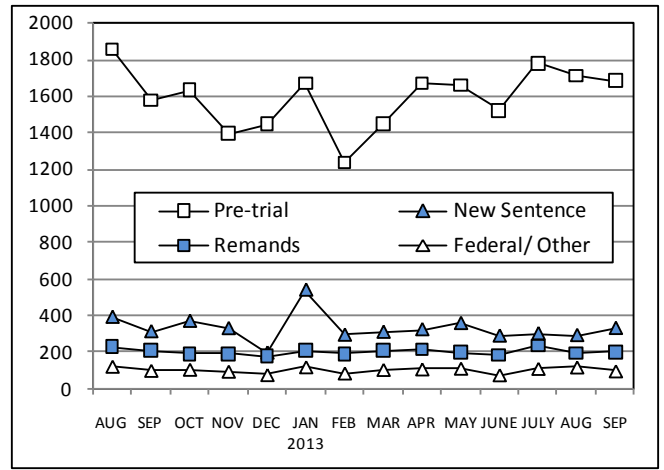


Chart 4 – Prison Population, first-of-month
2011 through 2013

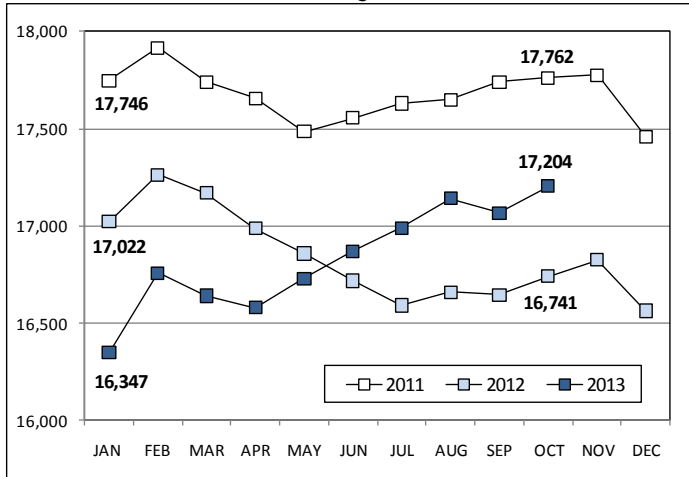


Chart 7 – Remands from Community Release
September 2013

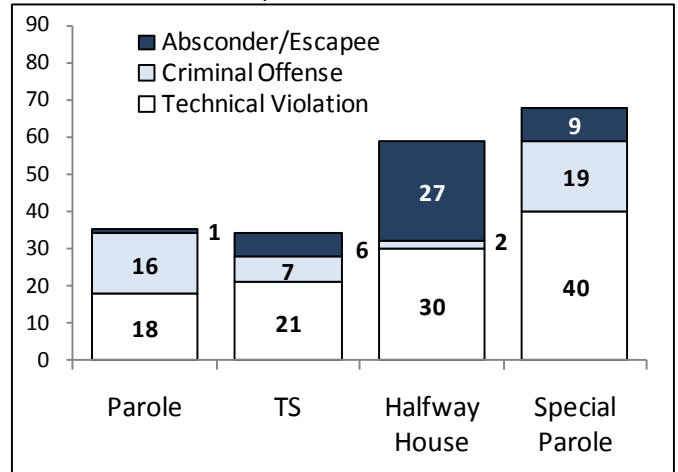


Chart 5 – Monthly Statewide Criminal Arrests
2012 versus 2013

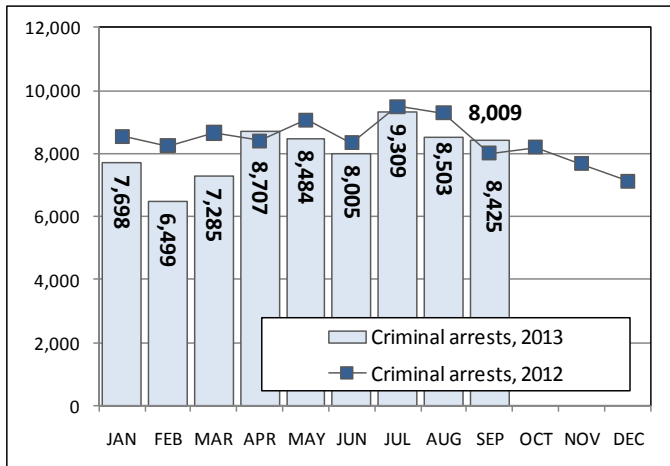
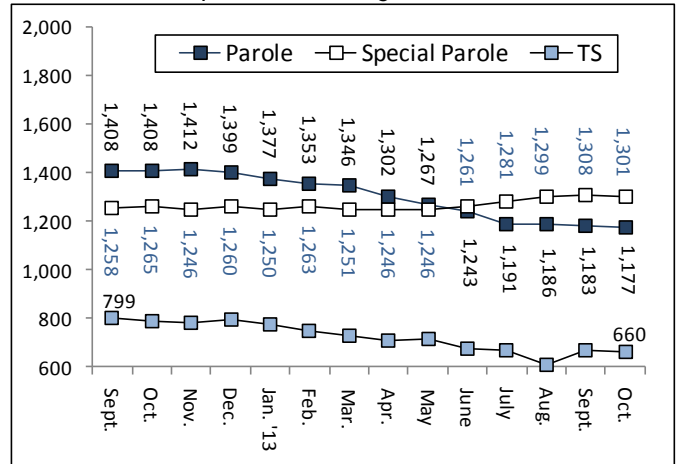


Chart 8 – Parole, TS and Special Parole, supervised cases
Sept. 1, 2012 through Oct. 1, 2013



Note: Data for all charts, with the exception of Chart 5, was supplied by CT DOC. Data for Chart 5 is based on new case starts in the state Offender-Based Tracking System (OBTS). Chart 8 includes offenders in halfway houses.