

OPM - Criminal Justice Policy & Planning Division

Monthly Indicators Report

Highlights

- The prison population on February 1, 2014 stood at 16,839, an increase of 82 prisoners over last year's figure. The prison population rose by 245 during January.
- During a typical year, the prison population is always expected to expand by several hundred during January. This phenomenon, sometimes referred to as the January bump, signals the return to a regular business schedule at the courts following the holiday Season. Judges will often delay sentencing until after the holidays and this year was no different. In January, the DOC reported 505 admits of sentenced offenders; in December only 189 sentenced offenders were admitted.
- During 2013, the number of offenders on parole and transitional supervision (TS) declined substantially. The number of offenders on parole declined by 18.8% during the year; the number on TS dropped by 19.7%. Given that parole and TS are the two largest discretionary release programs, dramatic reductions in these community caseloads almost inevitably accompany a growing prison population.
- Statewide criminal arrests in January 2014 were down 9.4% compared to last January (see chart 5).

OPM published its annual forecast of the prison population this month. It is available online at the OPM CJPPD website.

Prison Population Forecast

The prison population over the coming year is expected to decline at a moderate rate of 0.9%. If the forecast proves accurate, the number of prisoners on January 1, 2015 should be in the area of 16,758. Last year, OPM projected that the prison population at the start of 2014 would settle at about 16,000.

2013 was the first year in which the prison population has grown, on a January-to-January basis, since 2007. In 2011, the prison population contracted by 4.7%. In 2012 it dropped by 4.9%. The prison population in 2013 grew by 1.5%.

Few policy initiatives are expected in the coming session that will impact the size of the prison population. The Board of Pardons and Parole continues to implement structured decision-making and staff at both the Board and the DOC are involved in integrating a new risk instrument, SCORES, into their day-to-day operations.

If the improvements that are promised by structured decision making and SCORES materialize in the coming year, the prison population may decline faster than the figures presented in the current outlook.

TABLE 1 – Prison Population Forecast

	Avg. Daily Count	OPM 2014 Forecast	Inmate difference
JAN '14	16,347	-	-
FEB	16,839	16,839	-
MAR	-	16,759	-
APR	-	16,737	-
MAY	-	16,683	-
JUN	-	16,678	-
JUL	-	16,709	-
AUG	-	16,763	-
SEP	-	16,860	-
OCT	-	16,979	-
NOV	-	16,946	-
DEC	-	16,761	-
JAN '15	-	16,445	-
FEB	-	16,758	-

Avg. Daily Count (ADC) for 1st week of month

Chart 1 – Actual ADC of the prison population against the OPM forecast
January 1, 2013 through February 1, 2015

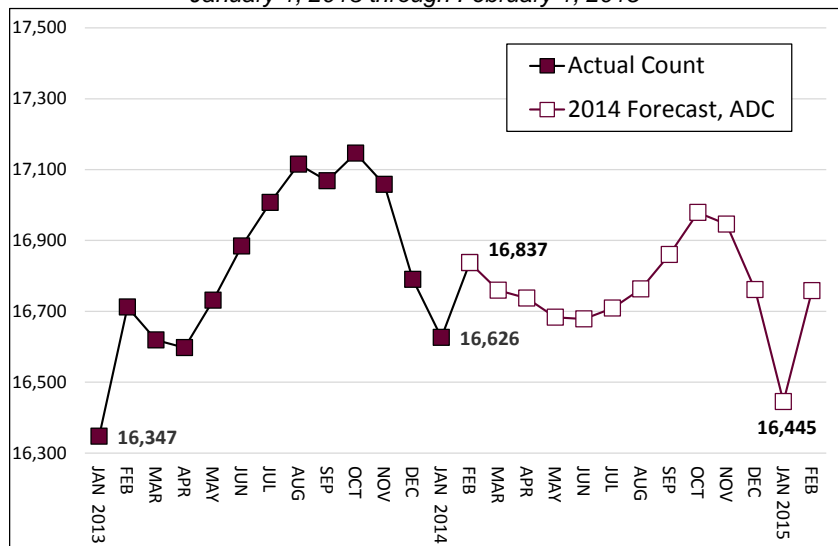
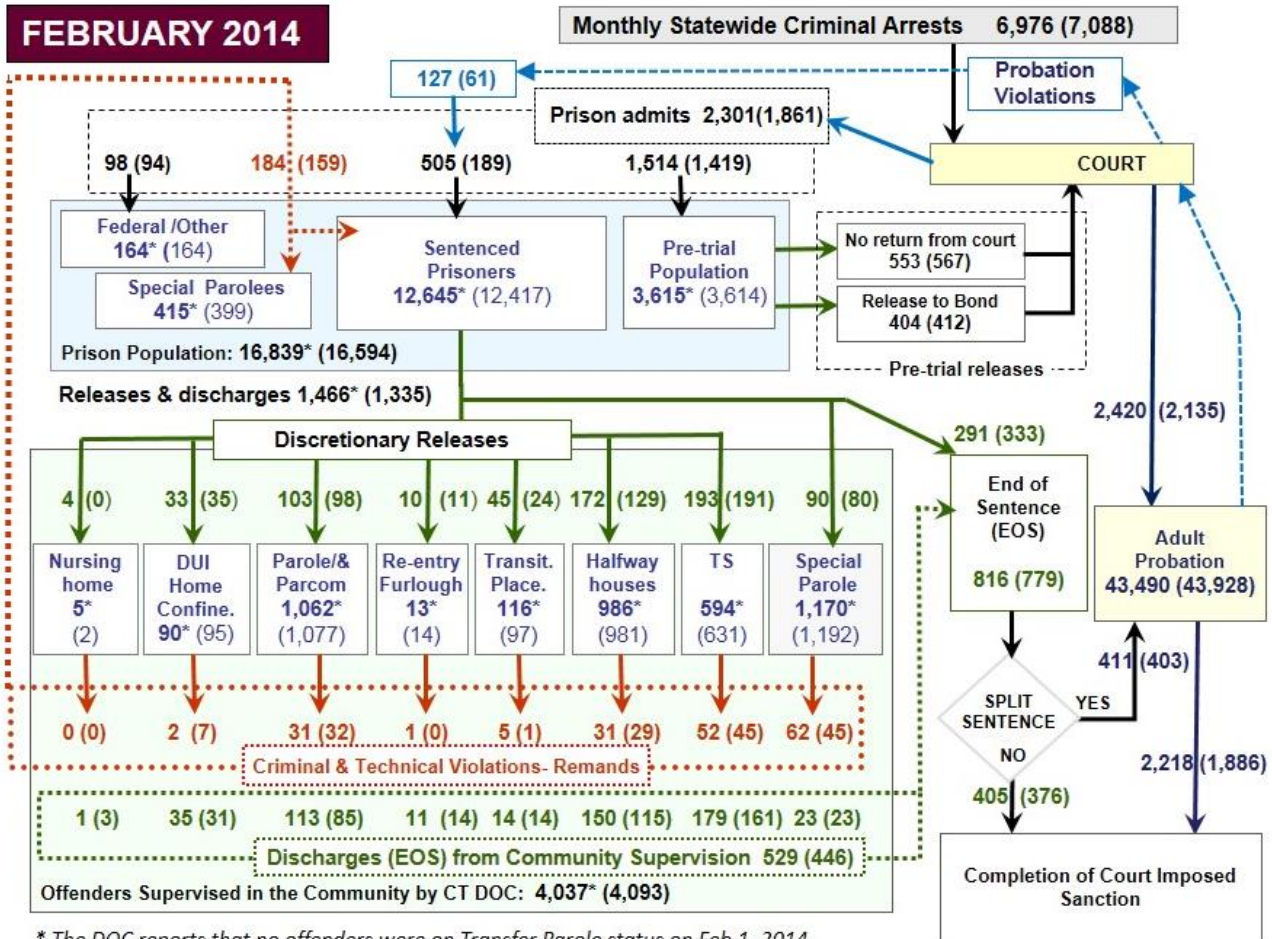


Chart 2 - Criminal justice, monthly counts and flows

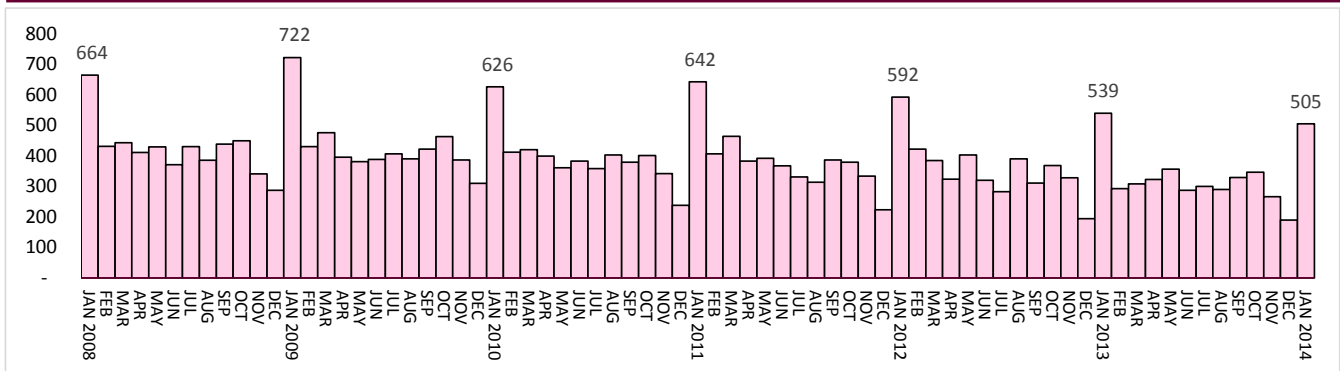


This chart contains monthly operational data for December 2013 and daily counts reported on January 1, 2014. Figures followed by asterisks (*) indicate the daily count on January 1st. Figures for the previous month are enclosed by parentheses.

¹DOC facility reports indicate that 476 sentenced offenders discharged (EOS) from DOC facilities during the month.

Sources of the data: Arrests - OBTS, Court and probation data - CSSD, all other data - CT DOC

Chart 2a –Monthly prisons admissions of sentenced offenders



To even a casual observer, the prison system and the larger criminal justice system seem to move to their own internal rhythms. By the season, the prison population rises and falls in predictable ways. Large, atypical swings generally have less to do with external factors like the incidence of crime than they do with to the operational dynamics of the criminal justice machinery.

In chart 2a, we observe data on the number of sentenced prisoners admitted to prison, on a monthly basis, since January 2008. Steady-as-a-heartbeat, the number of sentenced admissions drops every November and December only to rebound sharply during the month of January. The slower, year-to-year, declines in admissions, reflects longer-term, structural changes to the system.

Table 2 – The first-of-the-month count

	2013	2013	2014	2013	% Change	
	Dec. 1	Jan. 1	Feb. 1	Feb. 1	Monthly	Annual
DOC Facilities						
Federal/Other	178	164	164	183	0.0%	-10.4%
Sentenced	12,557	12,417	12,645	12,445	1.8%	1.6%
Special Parole	392	399	415	374	4.0%	11.0%
Pre-trial	3,659	3,614	3,615	3,755	0.0%	-3.7%
Total	16,786	16,594	16,839	16,757	1.5%	0.5%
DOC Community						
Transfer Parole	3	2	1	6	-	-
Parole/ Parcom Total	1,090	1,077	1,062	1,271	-1.4%	-16.4%
Parole	930	914	892	1,104	-2.4%	-19.2%
Parcom @ CT	160	163	170	167	4.3%	1.8%
Furlough	16	14	13	21	-7.1%	-38.1%
Trans Placement	85	97	116	20	19.6%	480.0%
DUI/Home confine.	99	95	90	103	-5.3%	-12.6%
Halfway House Total	1,004	981	986	1,024	0.5%	-3.7%
Comm Release	746	726	714	803	-1.7%	-11.1%
TS	29	27	25	9	-7.4%	177.8%
Parole	81	76	78	82	2.6%	-4.9%
Transfer Parole	0	0	0	0	-	-
Special Parole	148	152	169	130	11.2%	30.0%
TS Total	662	631	594	740	-5.9%	-19.7%
Nursing home	5	4	5	0	-	-
Special Parole	1,178	1,192	1,170	1,133	-1.8%	3.3%
Total	4,142	4,093	4,037	4,318	-1.4%	-6.5%

Table 3 – Admissions, releases & discharges*

	2013	2013	2014	2013	% Change	
	Nov.	Dec.	Jan.	Jan.	Monthly	Annual
Admissions						
Federal/Other	111	94	98	119	4.3%	-17.6%
Returns	164	159	184	206	15.7%	-10.7%
Trans.Parole / DUI	3	0	2	6	-	-
Parole	30	32	31	44	-3.1%	-29.5%
Trans Plac/Furlough	4	1	6	5	-	-
HWH	42	29	31	42	6.9%	-26.2%
TS	39	45	52	61	15.6%	-14.8%
Special Parole	46	45	62	48	37.8%	29.2%
New Sentence	266	189	505	539	167.2%	-6.3%
VOP	84	61	127	145	108.2%	-12.4%
Pre-trial	1,305	1,419	1,514	1,671	6.7%	-9.4%
Total	1,846	1,861	2,301	2,535	23.6%	-9.2%
Releases						
Transfer Parole	0	0	0	1	-	-
Parole	105	98	103	120	5.1%	-14.2%
Furlough	12	11	10	18	-9.1%	-44.4%
Trans. Placement	27	24	45	12	87.5%	275.0%
Home Confinement DUI	23	35	33	20	-5.7%	65.0%
HWH	211	129	172	182	33.3%	-5.5%
TS	181	191	193	237	1.0%	-18.6%
Special Parole	98	80	90	84	12.5%	7.1%
Nursing home	0	1	4	0	-	-
End of Sentence	839	779	816	842	4.7%	-3.1%
Total	1,496	1,348	1,466	1,516	8.8%	-3.3%
Pre-trial Releases*						
No return from Court	561	567	553	571	-2.5%	-3.2%
Release to Bond	413	412	404	422	-1.9%	-4.3%

* Totals reflect events not individuals.

Board of Pardons and Paroles

Table 4a – Inmates with sentences > 24 months

	Parole eligible	Not eligible
Dec.	8,459	859
Jan. '14	8,426	860
Feb.	8,453	862

Table 4b – New Parole hearings

	Hearings	Granted	Rate
Nov.	170	124	73%
Dec.	159	117	74%
Jan. '14	145	96	66%

Table 4c – Other parole actions

	Reparole from revocation	Reparole from rescission	Closed interest cases	Special parole cases
Nov.	30	9	23	20
Dec.	46	11	64	12
Jan '14	58	7	22	19

Pre-trial detainees

Table 5 – Bond ranges for pre-trial detainees

Bond amount	Nov. 1, 2013	Dec. 1, 2013	Jan. 1, 2014	Feb. 1, 2014
Less than \$20K	664	600	626	625
\$20K to < \$50K	630	621	637	632
\$50K to < \$100K	791	758	784	762
\$100K or higher	1,732	1,683	1,680	1,673
Over \$1M	208	208	214	212
Offenders	3,817	3,662	3,727	3,692

Table 5a – Pre-trial offenders, time since admission

Weeks since last DOC admit	Nov. 1, 2013	Dec. 1, 2013	Jan. 1, 2014	Feb. 1, 2014
< 1 week	420	454	297	480
1 to < 3 weeks	395	384	421	396
3 to < 10 weeks	1,023	902	950	851
10 to < 30 weeks	1,179	1,106	1,187	1,120
30 wks or more	805	820	872	846
	3,822	3,666	3,727	3,693

Court Support Services Division

Table 6 – The Jail Re-interview Program

	Offenders interviewed	Offenders released	Releases last year
Oct.	1,864	1,081	659
Nov.	1,457	917	807
Dec.	1,521	907	878

Table 7 – Pre-Trial & split-sentence starts

	Pre-trial Bail Case Starts	Client Supv. Starts	Split Sentence Starts
Nov.	2,218	2,204	408
Dec.	2,280	2,135	403
Jan. '14	2,428	2,420	411

Note: Figures published here are based on operational data available at the time of publication. Data in subsequent issues may not agree.

Chart 3 – Prison Population

February 1, 2014 to February 7, 2014

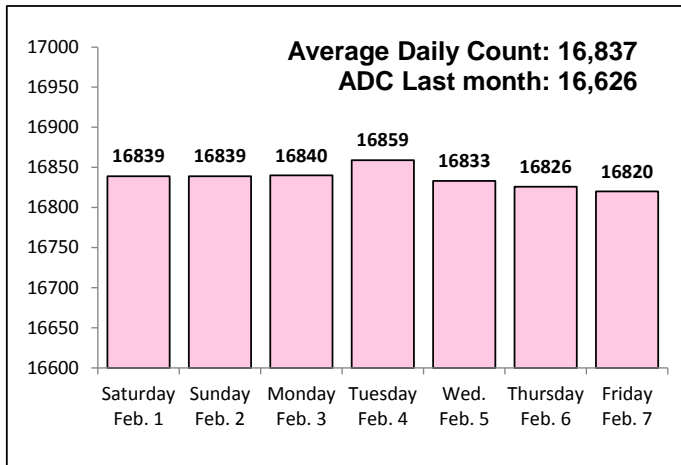


Chart 6 – Monthly DOC Admissions

December 2012 through January 2014

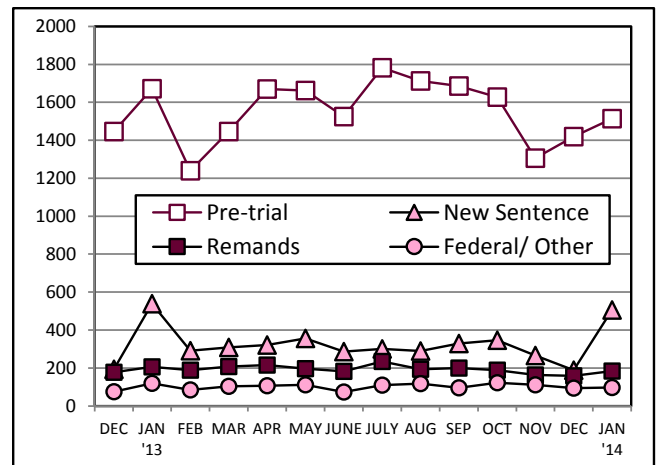


Chart 4 – Prison Population, first-of-month

2012 through 2014

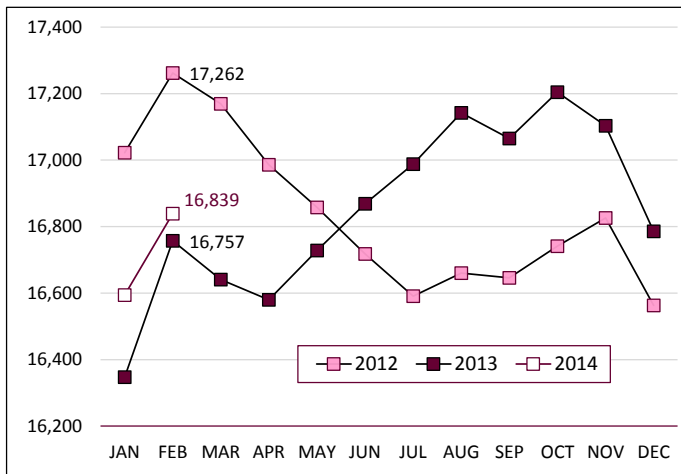


Chart 7– Remands from Community Release

January 2014

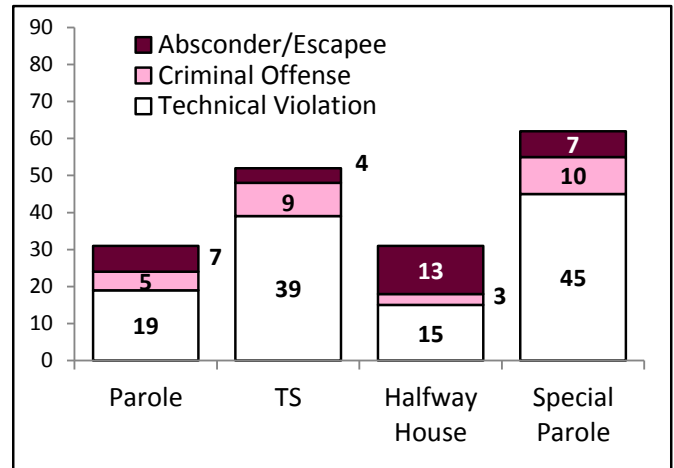


Chart 5 – Monthly Statewide Criminal Arrests

2013 versus 2014

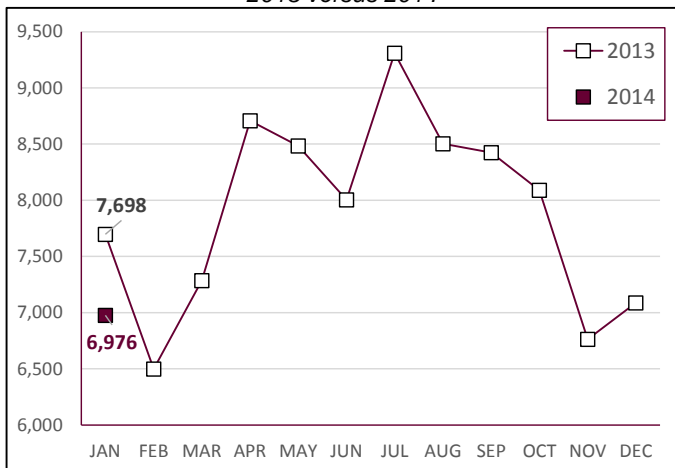
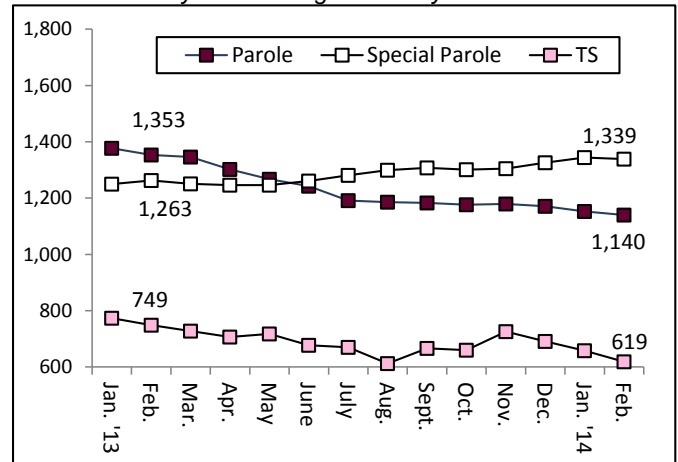


Chart 8 – DOC Community Supervision

January 2013 through February 2014



Note: Data for all charts, with the exception of Chart 5, was supplied by CT DOC. Data for Chart 5 is based on new case starts in the state Offender-Based Tracking System (OBTS). Chart 8 includes offenders in halfway houses.