

OPM - Criminal Justice Policy & Planning Division

Monthly Indicators Report

Highlights

- On June 1, 2014, 16,528 prisoners were incarcerated in state prison facilities. Last year, on June 1st, there were 16,869 offenders in state prisons.
- Over the last year, the number of Special Parolees has increased considerably. On June 1st, 1,366 offenders were being supervised in the community on special Parole status; 166 of them were in DOC-funded halfway houses. There were also 400 incarcerated offenders on Special Parole status who had been returned to prison for technical or criminal violations.
- Last month this paper reported on the increasing use of Transitional Placement (TP) by the DOC. Last month there were 138 offenders on TP status. This month there are 155. Last June, there were only 32 offenders on TP status.
- With the arrival of summer, we are certain to witness growth in the number of statewide arrests and in the size of the pre-trial prison population (see Chart 2a). Were the pre-trial population to grow at a typical summer pace, the incarcerated pre-trial population would be about 3,670 by October.
- The number of pre-trial detainees being held on bonds of less than \$20,000 rose from 599 in early May to 646 in early June. An additional 403 pre-trial detainees were being held on bonds of between \$20,000 and \$35,000 at the beginning of this month.

Email questions and comments to:
opmmir@ct.gov

Prison Population Forecast

The prison population continues to track below what OPM projected in February 2014. As summer approaches, the DOC may face sporadic over-crowding conditions at some facilities if the sentenced population does not decline at a reasonable summer pace.

Last summer, the sentenced population expanded just as the prisons began to admit increasing numbers of pre-trial offenders. This, and the fact that some prison housing units had been taken off-line for rehabilitation, led to hundreds of prisoners being housed in non-traditional spaces, such as gyms and programming rooms, at some facilities.

Last month we reported that prison admission figures during May are usually a solid

indicator of how much the prison population might expand during the summer months. Last year there were 2,325 admissions to the DOC during the month of May. This May, 2,220 people were admitted to prison, a 4.5% decline. Although it is still too early to project where the prison population is going over the next few months, the May figures present some cause for cautious optimism.

TABLE 1 – Prison Population Forecast

	Avg. Daily Count	OPM 2014 Forecast	Inmate difference
JAN '14	16,347	-	-
FEB	16,839	16,839	
MAR	16,624	16,759	135
APR	16,582	16,737	155
MAY	16,519	16,683	164
JUN	16,563	16,678	
JUL	-	16,709	
AUG	-	16,763	
SEP	-	16,860	
OCT	-	16,979	
NOV	-	16,946	
DEC	-	16,761	
JAN '15	-	16,445	
FEB	-	16,758	

Avg. Daily Count (ADC) for 1st week of month

Chart 1 – Actual prison population against the OPM forecast
 January 1, 2013 through February 1, 2015

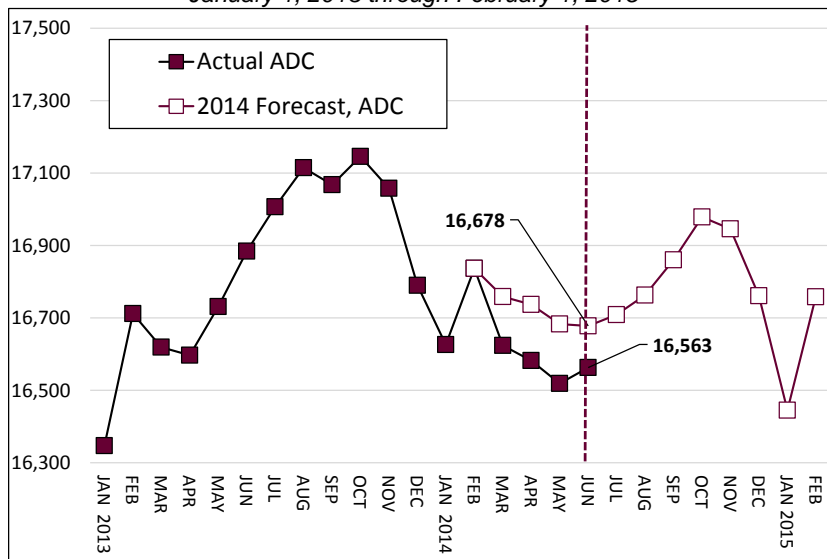
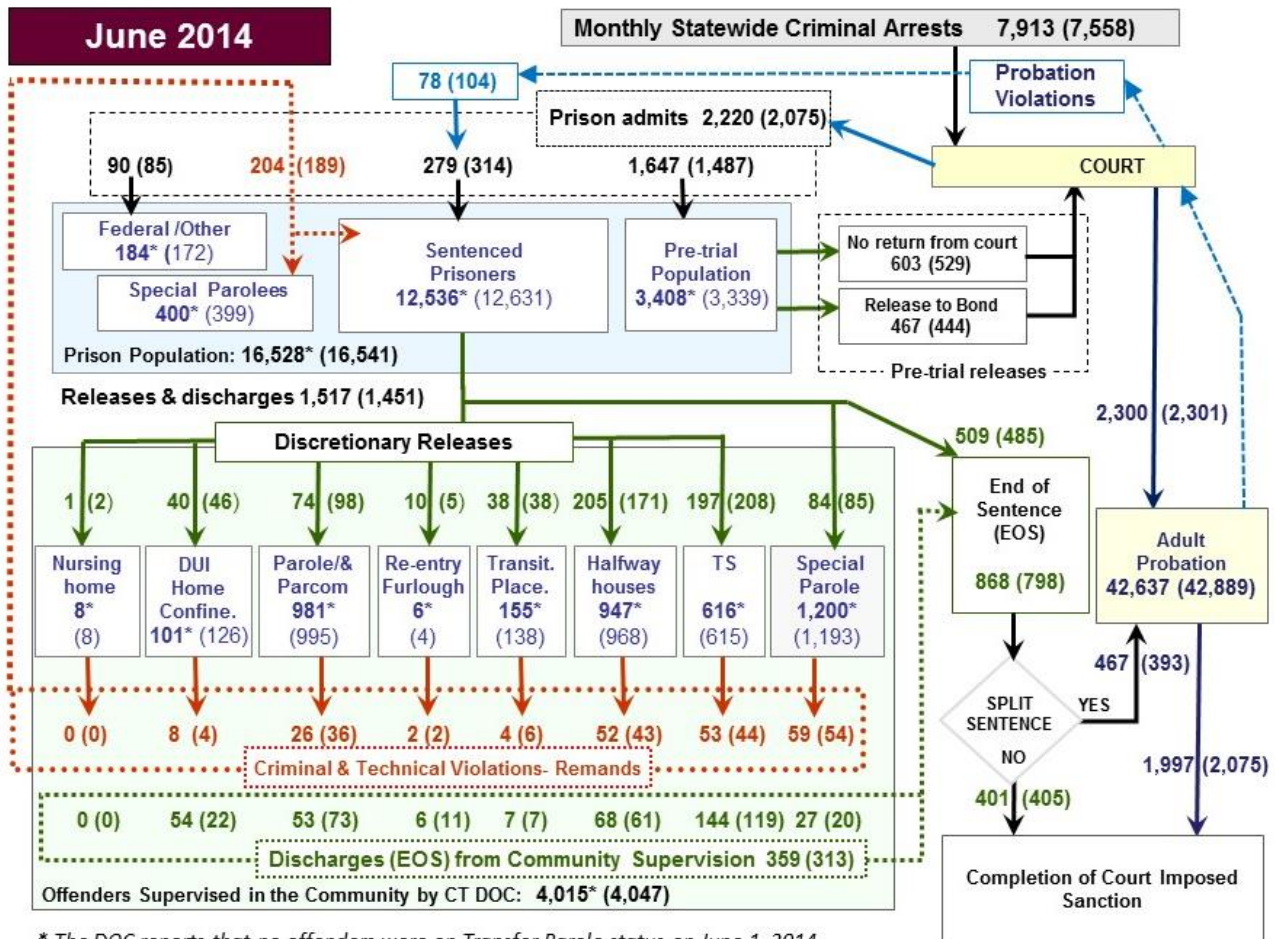


Chart 2 - Criminal justice, monthly counts and flows

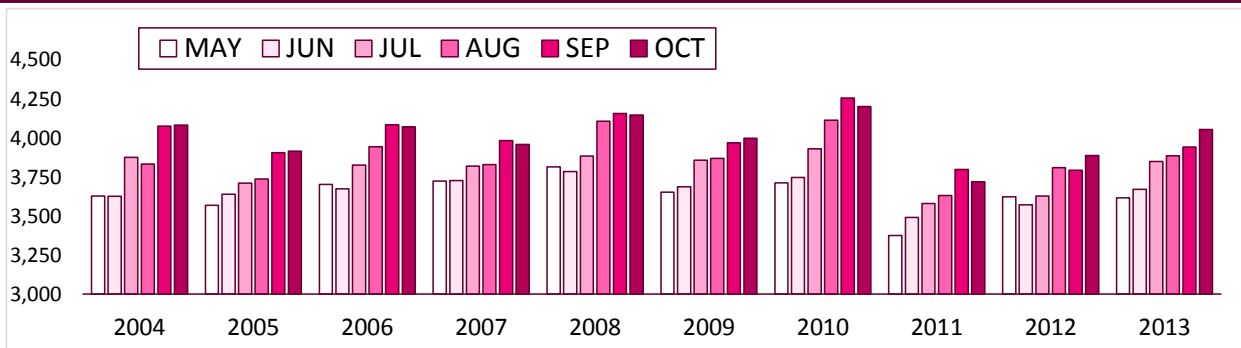


* The DOC reports that no offenders were on Transfer Parole status on June 1, 2014.

Chart 2 contains monthly, operational data for May 2014 and daily counts reported on June 1, 2014. Figures enclosed by asterisks (*) indicate the daily count on June 1st. Figures enclosed by parentheses are last month's count.

Sources: Arrests - OBTS, Court and probation data - CSSD, all other data - CT DOC

Chart 2a – The incarcerated pre-trial offender population, May through October



The state's prison population ebbs and flows to strong seasonal rhythms. Chart 2a presents ten years of data on the growth in the number of pre-trial offenders held in DOC facilities each year between May 1 and October 1. Over the last 10 years, the pre-trial population grows, on average, by 9.9% between May and October. In 2010, the pre-trial population grew by 13.2%, the largest increase during the decade, due, in part, to minor staffing reductions at the Judicial Branch's Jail Re-Interview Program (JRIP). A reduction in a just

handful of JRIP positions resulted in the utilization of several thousand extra prisoner-bed-days over the course of that summer.

On June 1, 2014, there were 3,408 pre-trial offenders incarcerated in Connecticut jails and prisons. Last year on the same date, 3,671 pre-trial offenders were in state prisons (see Table 2). Between April and May of this year, the number of pre-trial offenders admitted to prison jumped by 10.8%, from 1,487 to 1,647 (see Table 3).

Board of Pardons and Paroles

Table 2 – The first-of-the-month count

	2014	2014	2014	2013	% Change	
	Apr. 1	May 1	June 1	June 1	Monthly	Annual
DOC Facilities						
Federal/Other	177	172	184	191	7.0%	-3.7%
Sentenced	12,642	12,631	12,536	12,594	-0.8%	-0.5%
Special Parole	383	399	400	413	0.3%	-3.1%
Pre-trial	3,366	3,339	3,408	3,671	2.1%	-7.2%
Total	16,568	16,541	16,528	16,869	-0.1%	-2.0%
DOC Community						
Transfer Parole	0	0	0	6	-	-
Parole/ Parcom Total	999	995	981	1,156	-1.4%	-15.1%
Parole	838	830	816	992	-1.7%	-17.7%
Parcom @ CT	161	165	165	164	0.0%	0.6%
Furlough	17	4	6	13	50.0%	-53.8%
Trans Placement	125	138	155	32	12.3%	384.4%
DUI/Home confine.	107	126	101	122	-19.8%	-17.2%
Halfway House Total	990	968	947	1,006	-2.2%	-5.9%
Comm Release	725	691	687	753	-0.6%	-8.8%
TS	29	33	25	12	-24.2%	108.3%
Parole	70	70	69	87	-1.4%	-20.7%
Transfer Parole	0	0	0	0	-	-
Special Parole	166	174	166	154	-4.6%	7.8%
TS Total	589	615	616	665	0.2%	-7.4%
Nursing home	7	8	8	0	-	-
Special Parole	1,198	1,193	1,200	1,107	0.6%	8.4%
Total	4,032	4,047	4,014	4,107	-0.8%	-2.3%

Table 3 – Admissions, releases & discharges*

	2014	2014	2014	2013	% Change	
	Mar.	Apr.	May	May	Monthly	Annual
Admissions						
Federal/Other	97	85	90	111	5.9%	-18.9%
Remands	179	189	204	196	7.9%	4.1%
Trans.Parole / DUI	8	4	8	11	-	-
Parole	30	36	26	41	-27.8%	-36.6%
Trans Plac/Furlough	4	8	6	6	-	-
HWH	33	43	52	38	20.9%	36.8%
TS	49	44	53	61	20.5%	-13.1%
Special Parole	55	54	59	39	9.3%	51.3%
New Sentence	321	314	279	356	-11.1%	-21.6%
VOP	95	104	78	103	-25.0%	-24.3%
Pre-trial	1,443	1,487	1,647	1,662	10.8%	-0.9%
Total	2,040	2,075	2,220	2,325	7.0%	-4.5%
Releases						
Transfer Parole	0	0	0	0	-	-
Parole	77	98	74	109	-24.5%	-32.1%
Furlough	19	5	10	6	100.0%	66.7%
Trans. Placement	32	38	38	14	0.0%	171.4%
Home Confinement DUI	42	46	40	49	-13.0%	-18.4%
HWH	180	171	205	151	19.9%	35.8%
TS	170	208	197	205	-5.3%	-3.9%
Special Parole	96	85	84	84	-1.2%	0.0%
Nursing home	3	2	1	0	-	-
End of Sentence	790	798	868	884	8.8%	-1.8%
Total	1,409	1,451	1,517	1,502	4.5%	1.0%
Pre-trial Releases*						
No return from Court	563	529	603	583	14.0%	3.4%
Release to Bond	440	444	467	425	5.2%	9.9%

* Totals reflect events not individuals.

Table 4a – Inmates with sentences > 24 months

	Parole-eligible	Not eligible
April	8,470	862
May	8,505	863
June	8,521	865

Table 4b – Parole hearings, new cases

	Parole Hearings	Paroles granted	Grant rate	Paroles granted, 2013
Mar.	115	78	68%	113
Apr.	121	73	60%	113
May	111	73	66%	149

Table 4c – Other parole actions

	Reparole from revocation	Reparole from rescission	Closed interest cases	Special parole cases
Mar.	54	7	48	24
Apr.	40	6	117	40
May	50	8	25	37

Pre-trial detainees

Table 5 – Bond ranges for pre-trial detainees

Bond amount	Mar. 1, 2014	Apr. 1, 2014	May 1, 2014	June 1, 2014
Less than \$20K	597	574	599	646
\$20K to < \$50K	591	552	555	591
\$50K to <\$100K	712	716	711	695
\$100K or higher	1627	1602	1545	1508
Over \$1M	207	209	203	196
Offenders w/bonds	3,527	3,444	3,410	3,440

Table 5a – Pre-trial offenders, weeks since admission

Weeks since last DOC admit	Mar. 1, 2014	Apr. 1, 2014	May 1, 2014	June 1, 2014
< 1 week	428	453	446	550
1 to < 3 weeks	308	400	403	414
3 to < 10 weeks	852	806	856	884
10 to < 30 weeks	1,078	950	904	858
30 wks or more	866	835	801	738
Pre-trial prisoners	3,532	3,444	3,410	3444

Court Support Services Division

Table 6 – The Jail Re-interview Program

	Offenders interviewed	Offenders released	Releases last year
Mar.	1,397	792	889
Apr.	1,474	761	970
May	1,613	827	942

Table 7 – Pre-Trial & split-sentence starts

	Pre-trial Bail Case Starts	Client Supv. Starts	Split Sentence Starts
Mar.	2,458	2,319	429
April	2,479	2,301	393
May	2,624	2,300	467

Note: Figures published here are based on operational data available at the time of publication. Data in subsequent issues may not agree.

Chart 3 – Prison population

June 1, 2014 to June 7, 2014

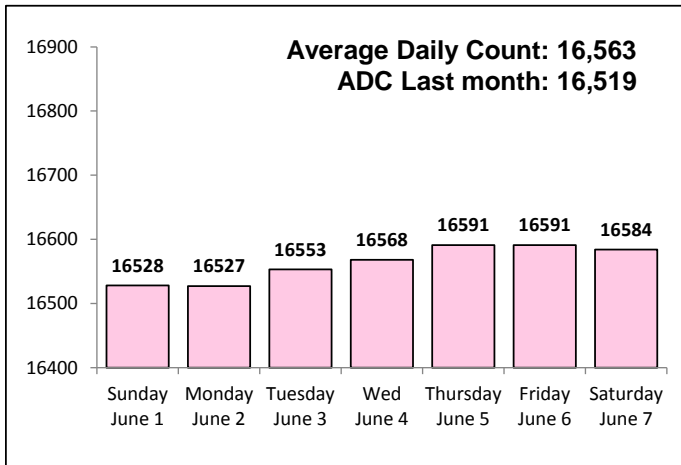


Chart 6 – Monthly DOC Admissions

April 2013 through May 2014

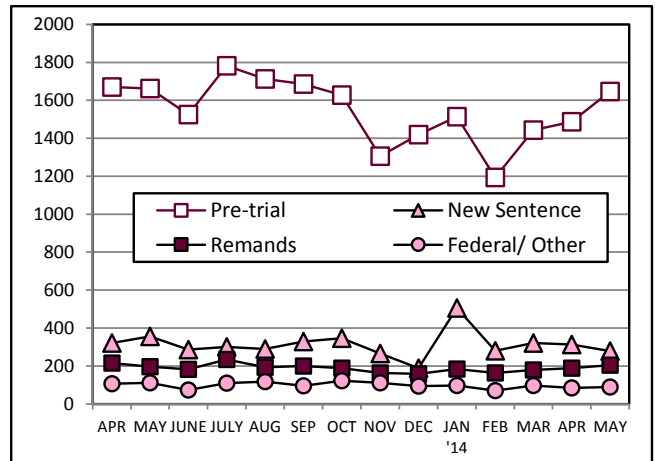


Chart 4 – Prison population, first-of-month

2013 and 2014

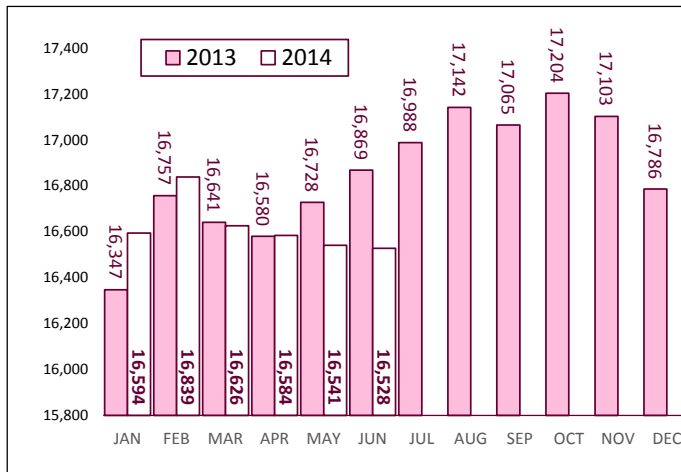


Chart 7– Remands from community release

May 2014

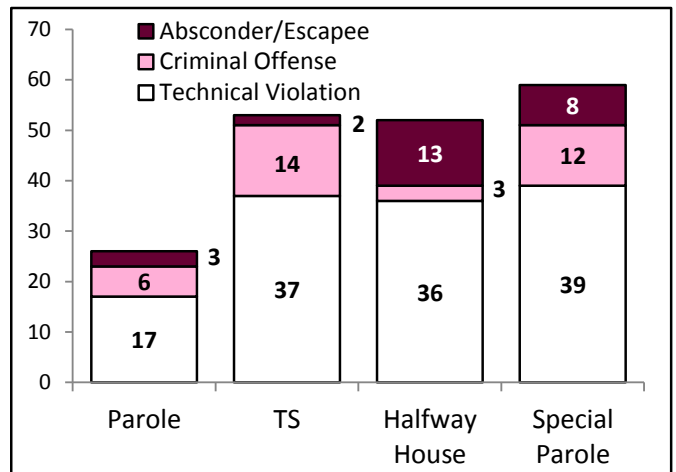


Chart 5 – Statewide criminal arrests

2013 versus 2014

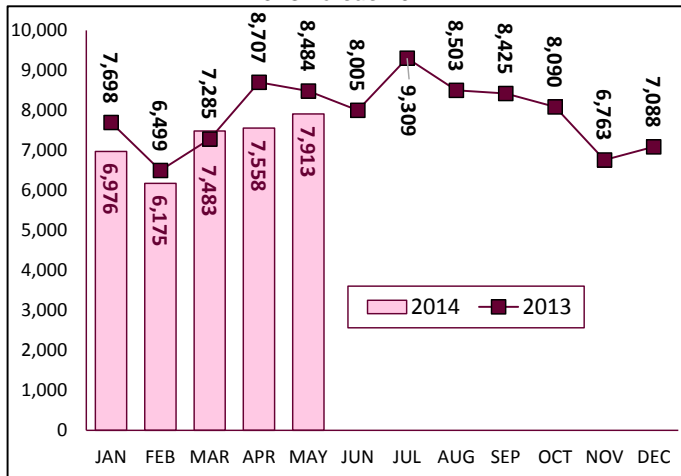
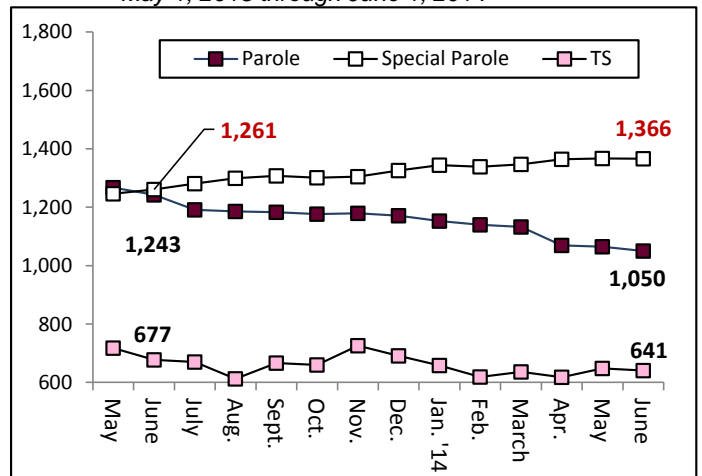


Chart 8 – DOC community supervision

May 1, 2013 through June 1, 2014



Note: Data for all charts, with the exception of Chart 5, was supplied by CT DOC. Data for Chart 5 is based on new case starts in the state Offender-Based Tracking System (OBTS). Chart 8 includes offenders in halfway houses.