

# OPM - Criminal Justice Policy & Planning Division

## Monthly Indicators Report

### Highlights

- On February 1, 2016, 15,860 people were incarcerated in Connecticut prisons and jails. A year ago, on the same date, 16,302 people were in prison.
- OPM has produced a new prison population projection through February 2017. If accurate, the prison population could drop to 15,277 by the end of the year. This projection assumes continuation of all current statutes and policies. Proposed changes could increase or decrease the actual population.
- Between January 1 and February 1, 2016, the prison population jumped by 360 prisoners. During January, prison admissions were up across the board, beating the December figure 2,176 to 1,739 (see chart 2).
- During January, the DOC ended its contract with the Maple Street House, a 61-bed halfway house in Bridgeport. The closure represents a reduction of approximately 5% to the DOC network of contracted residential beds. Though a small reduction, it could slow efforts to place eligible offenders in the community.
- Chart 2a contains recidivism and distribution data for all sentenced, male offenders who left prison in 2011. Over 80% of offenders, regardless of age, who were completing their 9<sup>th</sup> or higher prison sentence were rearrested within 3 years. A review of their criminal histories revealed a pattern of low-level property and drug crimes and administrative offenses like Failure to Appear.

**We are on-line at:**  
[http://www.ct.gov/opm/cwp/view.asp?a=2976&Q=383680&opmNav\\_GID=1797&opmNav=|46658/](http://www.ct.gov/opm/cwp/view.asp?a=2976&Q=383680&opmNav_GID=1797&opmNav=|46658/)

### Prison Population Forecast

OPM has produced a new forecast of the prison population for the remainder of 2016 through February 2017. This projection is an estimate of what the prison population should look like if the internal and external forces that impact the prison population continue operating at current levels. On a February-to-February basis, the projection assumes that prison population will decline by 400 prisoners, or 2.6%, in the coming year.

From OPM's perspective, a steadily declining prison population is optimal for both public safety and operational concerns. There are many factors that OPM considers in its projections. Certainly, crime is down, as are arrests and overall prison admissions. Fewer new people are entering the state's prison system each year and there are many fewer young people incarcerated today than there were five years ago.

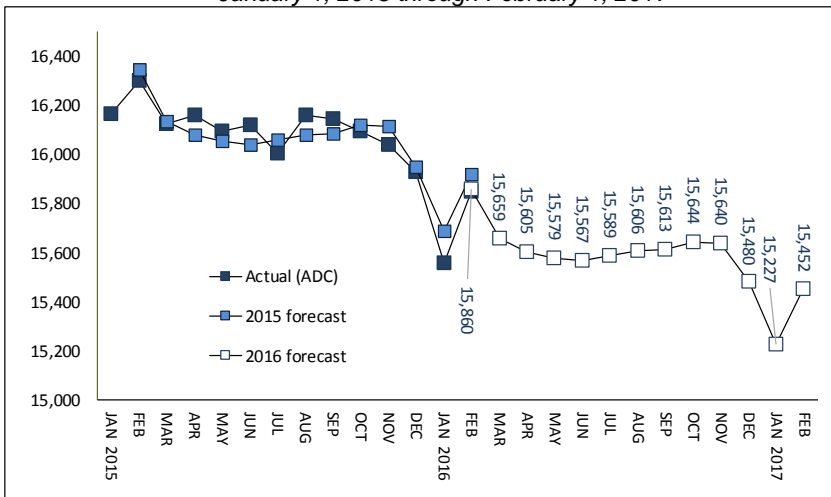
During 2015, the prison population tracked a path that was closely aligned with OPM's projection for much of the year. Fewer people coming into prison at the front of the system and greater efficiencies realized on the release and re-entry side of the equation resulted in a 2.6% drop in the prison population, all without any significant external impacts from new legislation or policies. If the DOC can build on the positive things that happened last year, the actual prison population could decline at a slightly faster rate than projected here.

**TABLE 1 – Prison Population Forecast**

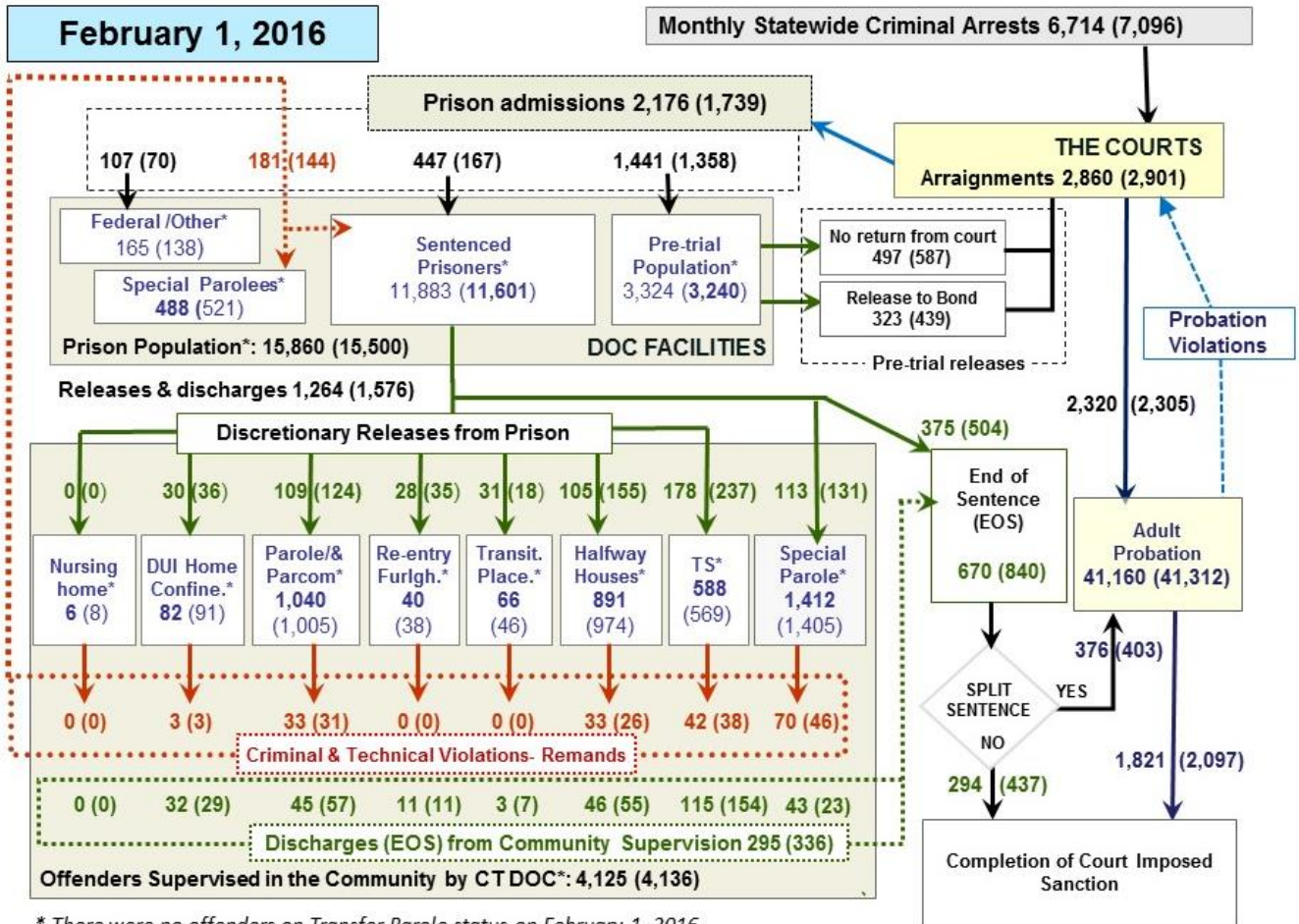
	Avg. Daily Count	OPM 2015 Forecast	Inmate difference
JAN '16	15,556	-	-
FEB	15,852	15,860	-
MAR	-	15,659	-
APR	-	15,605	-
MAY	-	15,579	-
JUN	-	15,567	-
JUL	-	15,589	-
AUG	-	15,606	-
SEP	-	15,613	-
OCT	-	15,644	-
NOV	-	15,640	-
DEC	-	15,480	-
JAN '17	-	15,227	-
FEB	-	15,452	-

*Avg. Daily Count (ADC) for 1st week of month*

**Chart 1 – Actual prison population against the OPM forecasts**  
 January 1, 2015 through February 1, 2017



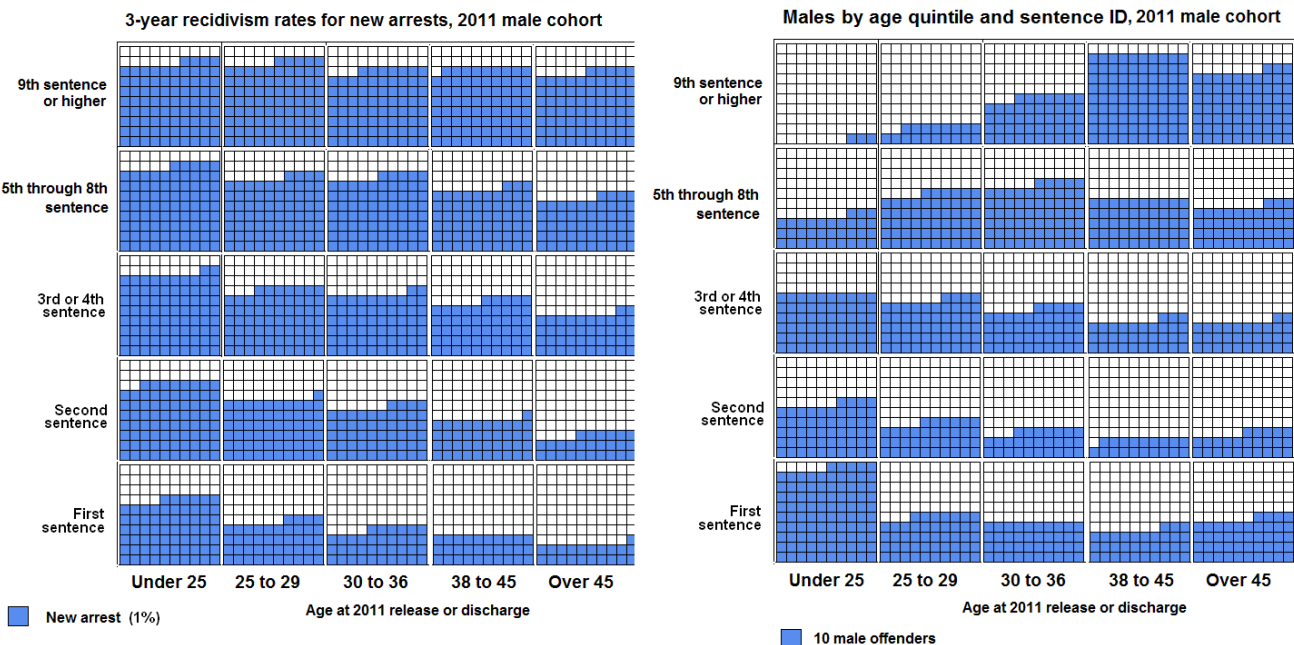
## Chart 2 - Criminal justice, monthly counts and flows



\* There were no offenders on Transfer Parole status on February 1, 2016.

Chart 2 contains monthly, operation data for January 2016 and daily counts reported on February 1, 2016. Asterisks (\*) indicate the daily count on February 1<sup>st</sup>. Last month's figures are enclosed by parentheses. Sources: Arrests - OBTS, Court and probation data - CSSD, all other data - CT DOC.

## Chart 2a – Recidivism by age and sentence history, men leaving prison in 2011



**Table 2 – The first-of-month totals**

	2015	2016	2016	2015	% Change	
	Dec. 1	Jan. 1	Feb. 1	Feb. 1	Monthly	Annual
<b>DOC Facilities</b>						
Federal/Other	128	138	165	223	19.6%	-26.0%
Sentenced	11,854	11,601	11,883	12,273	2.4%	-3.2%
Special Parole	570	521	488	446	-6.3%	9.4%
Pre-trial	3,430	3,240	3,324	3,360	2.6%	-1.1%
<b>Total</b>	<b>15,982</b>	<b>15,500</b>	<b>15,860</b>	<b>16,302</b>	<b>2.3%</b>	<b>-2.7%</b>
<b>DOC Community</b>						
Transfer Parole	0	0	0	0	-	-
Parole/ Parcom Total	981	1,005	1,040	929	3.5%	11.9%
Parole	804	828	863	762	4.2%	13.3%
Parcom @ CT	177	177	177	167	0.0%	6.0%
Furlough	40	38	40	17	-	-
Trans Placement	44	46	66	62	43.5%	6.5%
DUI/Home confine.	96	91	82	82	-9.9%	0.0%
Halfway House Total	1,009	974	891	972	-8.5%	-8.3%
Comm Release	555	526	465	677	-11.6%	-31.3%
TS	52	46	45	23	-2.2%	95.7%
Parole	163	158	132	78	-16.5%	69.2%
Transfer Parole	0	0	0	0	-	-
Special Parole	239	244	249	194	2.0%	28.4%
TS	540	569	588	522	3.3%	12.6%
Nursing home	8	8	6	6	-	-
Special Parole	1,355	1,405	1,412	1,216	0.5%	16.1%
<b>Total</b>	<b>4,073</b>	<b>4,136</b>	<b>4,125</b>	<b>3,806</b>	<b>-0.3%</b>	<b>8.4%</b>

**Table 3 – Admissions, releases & discharges\***

	2015	2015	2016	2015	% Change	
	Nov.	Dec.	Jan.	Jan.	Monthly	Annual
<b>Admissions</b>						
Federal/Other	75	70	107	95	52.9%	12.6%
Remands	164	144	181	148	25.7%	22.3%
DUI	5	3	3	7	-	-
Parole	20	31	33	29	6.5%	13.8%
Trans Plac/Furlough	2	0	0	1	-	-
HWH	32	26	33	20	26.9%	65.0%
TS	45	38	42	25	10.5%	68.0%
Special Parole	60	46	70	66	52.2%	6.1%
New Sentence	222	167	447	488	167.7%	-8.4%
VOP	70	59	127	133	115.3%	-4.5%
Pre-trial	1358	1358	1441	1299	6.1%	10.9%
<b>Total</b>	<b>1,819</b>	<b>1,739</b>	<b>2,176</b>	<b>2,030</b>	<b>25.1%</b>	<b>7.2%</b>
<b>Releases and discharges</b>						
Transfer Parole	0	0	0	0	-	-
Parole	118	124	109	73	-12.1%	49.3%
Furlough	29	35	28	16	-20.0%	75.0%
Trans. Placement	13	18	31	24	72.2%	29.2%
Home Confinement DUI	24	36	30	29	-16.7%	3.4%
HWH	137	155	105	174	-32.3%	-39.7%
TS	176	237	178	134	-24.9%	32.8%
Special Parole	102	131	113	90	-13.7%	25.6%
Nursing home	1	0	0	0	-	-
End of Sentence	721	840	670	793	-20.2%	-15.5%
<b>Total</b>	<b>1,321</b>	<b>1,576</b>	<b>1,264</b>	<b>1,333</b>	<b>-19.8%</b>	<b>-5.2%</b>
<b>Pre-trial Releases*</b>						
From Court	452	587	497	487	-15.3%	2.1%
Release to Bond	367	439	323	350	-26.4%	-7.7%

\* Totals reflect events, not individual offenders

**Table 3a – Community Release Unit metrics**

	Cases				Approval Rate
	Reviewed	Approved	Denied	Continued	
Nov.	903	420	137	129	47%
Dec.	953	455	152	152	48%
Jan.	743	344	123	126	46%

**Board of Pardons and Paroles**

**Table 4 – Parole hearings, new cases**

	Paroles			Paroles	Paroles
	Parole Hearings	granted, 2015	Grant rate	granted, 1 year ago	granted, 2 years ago
Nov.	170	96	56%	103	124
Dec.	187	122	65%	107	117
Jan. '16	164	102	62%	81	96

**Table 4a – Other Board actions**

	Reparole from revocation	Reparole from rescission	Closed interest cases	Special parole cases
Nov.	64	4	21	30
Dec.	55	1	33	32
Jan.	37	5	41	45

**The pre-trial population**

**Table 5 – Bond ranges for pre-trial detainees**

Bond amount	Dec. 1, 2015	Jan. 1, 2016	Feb. 1, 2016	Feb. 1, 2015
Less than \$20K	568	557	560	613
\$20K to < \$50K	593	581	561	555
\$50K to < \$100K	717	719	718	730
\$100K or higher	1,540	1,501	1,502	1,541
Offenders w/bonds	3,418	3,358	3,341	3,439
Over \$1M	176	177	167	185

**Table 5a – Pre-trial, weeks since admission**

Weeks since last DOC admit	Dec. 1, 2015	Jan. 1, 2015	Feb. 1, 2016	Feb. 1, 2015
< 1 week	351	356	545	401
1 to < 3 weeks	415	408	389	347
3 to < 10 weeks	921	890	773	782
10 to < 30 weeks	1,029	1,160	937	1,153
30 wks or more	706	776	700	759
Pre-trial prisoners	3,422	3,590	3,344	3,442

**Table 5b – Pre-trial admits, new offenders**

	Oct. 2015	Nov. 2015	Dec. 2015	Jan. 2016
Arraignments	3,084	2,780	2,901	2,860
Pre-trial Admits	1,488	1,358	1,358	1,441
New to DOC	413	367	402	355
% New	28%	27%	30%	25%

**Court Support Services Division**

**Table 6 – The Jail Re-interview Program**

	Pre-trial admissions	Offender interviews	Offenders released	Releases last year
Nov.	1,358	1,579	745	804
Dec.	1,358	1,651	883	877
Jan. '16	1,441	1,656	872	888

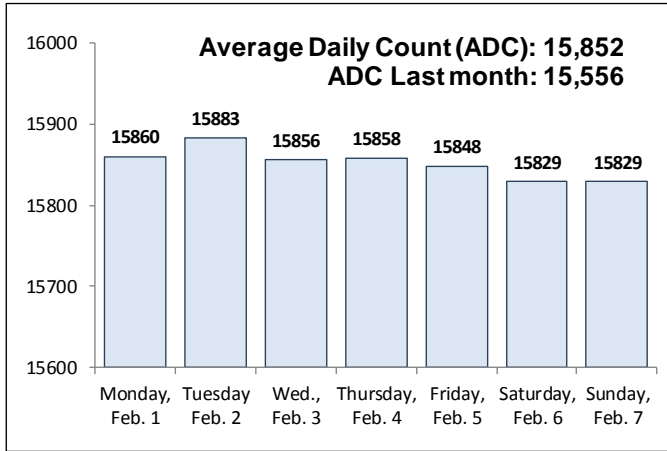
**Table 6a – Pre-Trial & split-sentence starts**

	Pre-trial Bail Case Starts	Client Supv. Starts	Split Sentence Starts
	Nov.	2,254	2,176
Dec.	2,290	2,305	403
Jan. '15	2,403	2,320	376

Note: Figures published here are based on operational data available at publication. Data in subsequent issues may not agree.

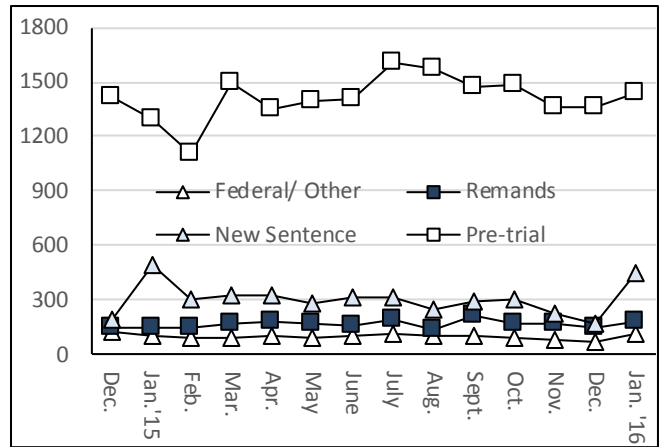
**Chart 3 – Prison population**

*First week of the month, and ADC*



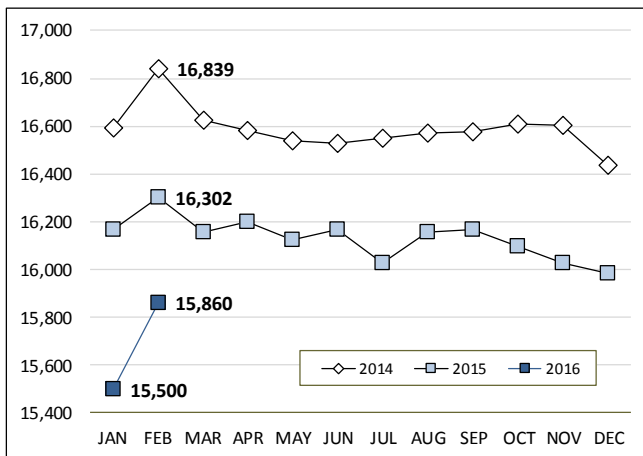
**Chart 6 – Monthly DOC Admissions**

*December 2014 through January 2016*



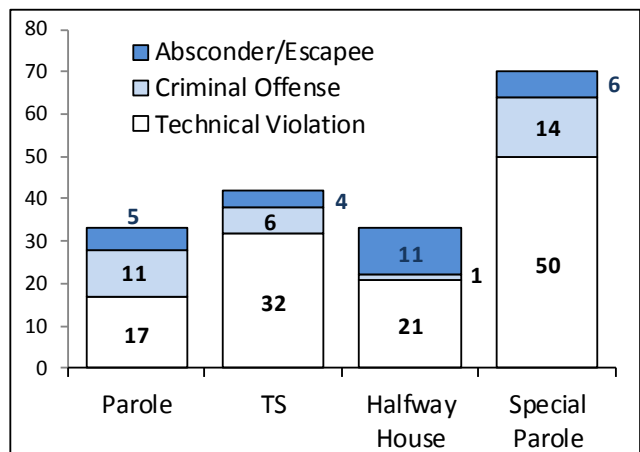
**Chart 4 – Prison population, first-of-month**

*2014, 2015 and 2016*



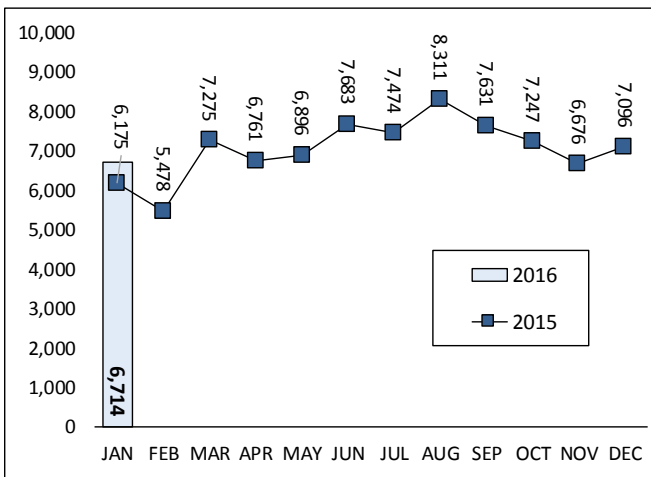
**Chart 7 – Remands from community release**

*January 2016*



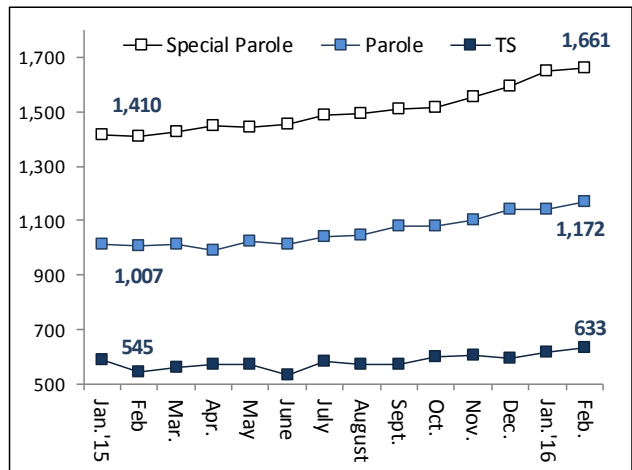
**Chart 5 – Statewide criminal arrests**

*2015 and 2016*



**Chart 8 – DOC community supervision**

*January 1, 2015 through February 1, 2016*



*Note: Data for all charts, with the exception of Chart 5, was supplied by CT DOC. Data for Chart 5 is based on new case starts in the state Offender-Based Tracking System (OBTS). Chart 8 includes offenders in halfway houses.*