

# OPM - Criminal Justice Policy & Planning Division

## Monthly Indicators Report

### Highlights

- On December 1, 2017, 13,941 people were incarcerated in CT state prisons and jails. The last time the prison population was below 14,000 was June 1994; over 23 years ago. Given the usual late year contraction, it's possible the population could dip below 13,800 by January 1<sup>st</sup>.
- As of this writing, the sentenced population sits at 10,114, poised to fall below 10,000 before the end of the year. Peaking above 15,000 in 2008, the sentenced population surpassed 10,000 in July 1993 – more than 24 years ago.
- With an increased focus, reductions in the number of inmates held at the DOC's one women's prison have recently been realized. Hovering for several years around 1000, the count at York is down to 932, an 8% drop since July.
- In chart 2a we examine trends in juvenile arrests over last 20 years. Connecticut has witnessed a considerable reduction in the number of young people being arrested. Looking closer at the crime of arrests yields some interesting findings.
- As the penalty for possession of narcotics changed in October 2015, OPM has tracked the number of offenders held in prison on a related offense. The number of offenders held on a related offense has fallen by 74%.
- Because CSSD is implementing a new data capture and reporting system, most Judicial Branch figures that appear in this issue are estimates, provided to us by CSSD staff. We will update the data in future issues of this report.

### Prison Population Forecast

The prison population has contracted every month since the 2017 forecast was released. This marks the first time in recorded history (at least since 1989), every month started lower than the previous through an entire calendar year.

Since 2008, the prison population has followed a fairly predictable, seasonal pattern. Early in the year a sizable increase colloquially known as the "January Bump" would occur. Following a spring of slow decline, the pretrial population would swell due to increased arrest activity. As the calendar shifted to November and December, the population would ebb towards its low point in early January a few hundred inmates lower than the previous January.

TABLE 1 – Prison Population Forecast

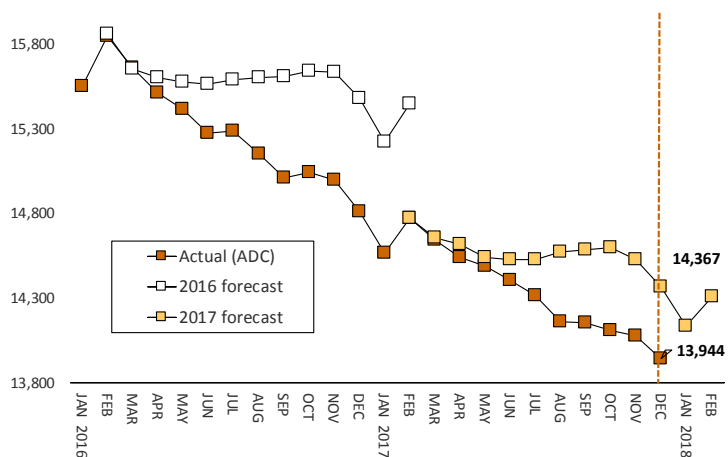
	Avg. Daily Count	OPM 2017 Forecast	Inmate difference
JAN '17	14,565	-	-
FEB	14,776	14,776	-
MAR	14,646	14,658	12
APR	14,543	14,618	75
MAY	14,491	14,542	51
JUN	14,406	14,532	126
JUL	14,316	14,526	210
AUG	14,162	14,577	415
SEP	14,158	14,586	428
OCT	14,112	14,600	488
NOV	14,081	14,531	450
DEC	13,944	14,367	423
JAN '18	-	14,139	-
FEB	-	14,308	-

*Avg. Daily Count (ADC) for 1st week of month*

This antiquated cycle no longer exists. The Actual ADC line charted below depicts an overwhelmingly linear pattern. Remnants of the January bump and late year collapse remain, but the prison population now falls throughout the summer as well.

Despite the overall downward trend, there is some evidence that the rate of decline is subsiding. The drops from October to November and November to December were not as severe as OPM forecasted, causing a slight closing in the difference between the forecast and actual populations.

Chart 1 – Actual prison population against the OPM forecasts  
January 1, 2016 through February 1, 2018



## Chart 2 - Criminal justice, monthly counts and flows

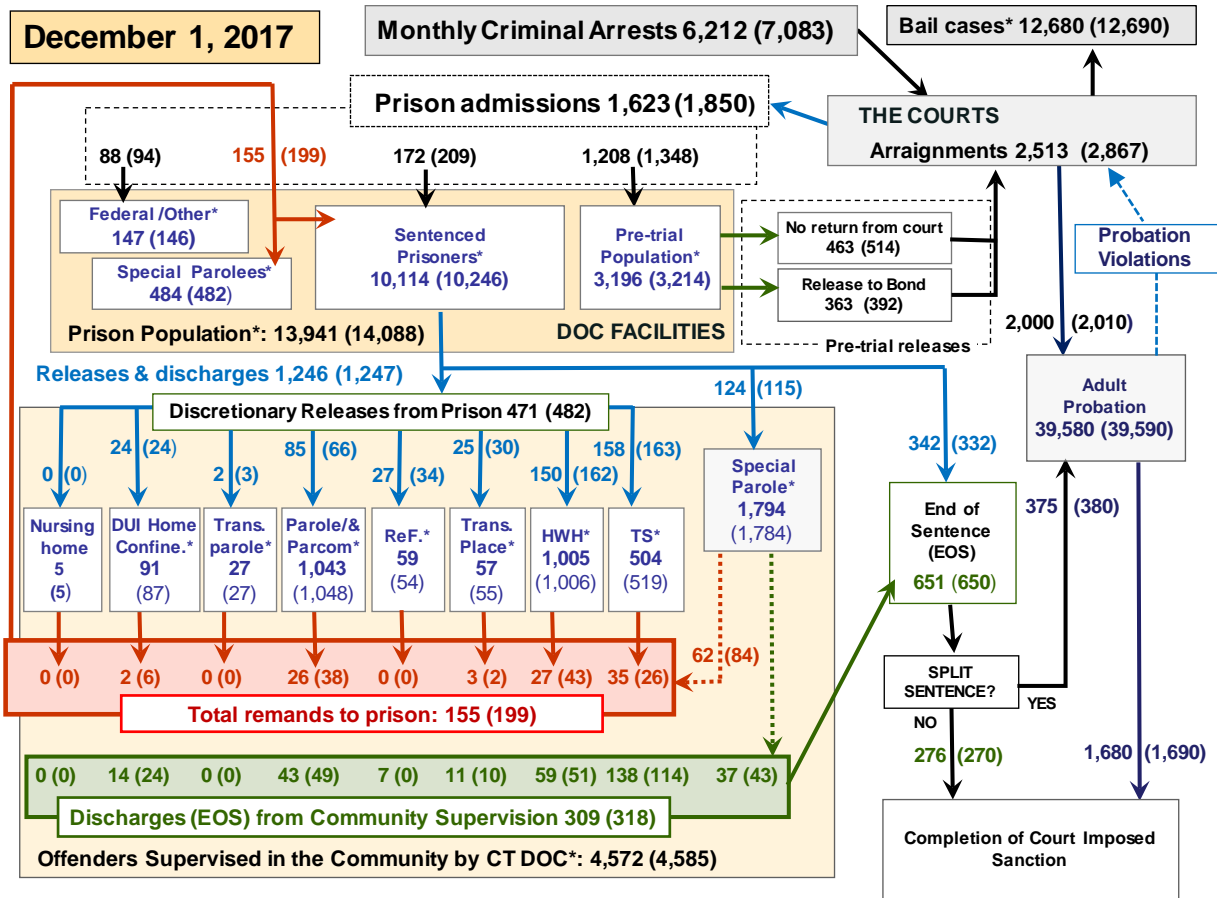
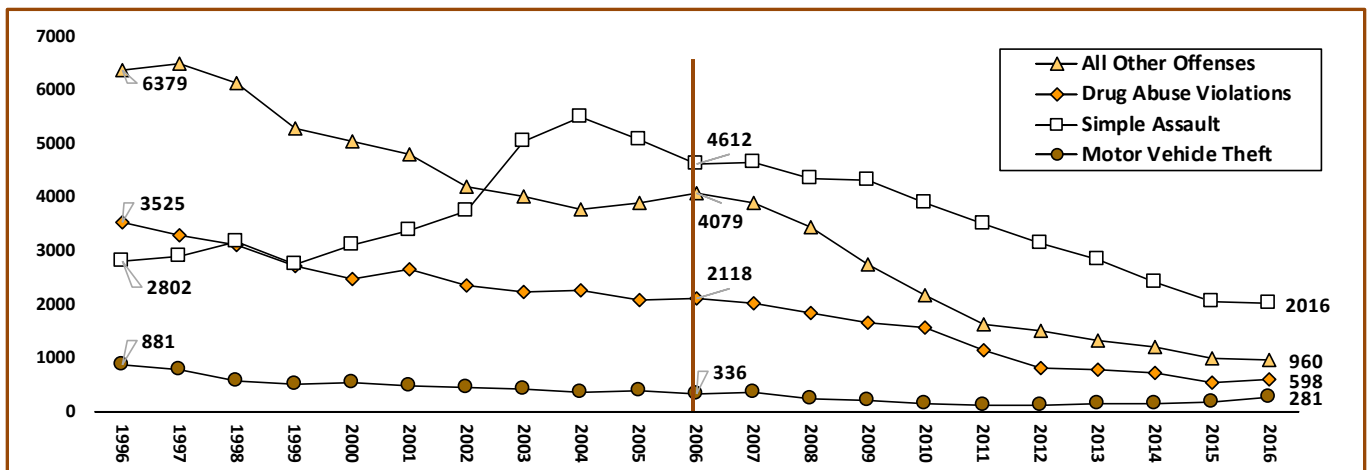


Chart 2 contains monthly operations data for November 2017 and daily counts reported on December 1, 2017. Asterisks (\*) indicate the daily count on December 1<sup>st</sup>. Figures for last month are enclosed by parentheses. Sources: Arrests - OBTS, Court and probation data - CSSD, all other data - CT DOC. Note: Judicial Branch data this month is estimated.

## Chart 2a – Trends – Juvenile Arrests from 1996 to 2016



One way to predict the direction the criminal justice system is heading is to look at trends in behavior among young offenders. Fewer young offenders today suggests fewer adult offenders in the future.

The chart above depicts the total, annual arrests of offenders under the age of 18 from 1996 to 2016. The data was collected from the annual DESPP publication - *Crime in Connecticut*.

Four categories are represented - motor vehicle theft, simple assault, drug abuse violations and the catch-all "all other offenses".

In total, far fewer arrests have been made of young offenders in recent years. Even with a recent, but relatively small uptick in arrests for motor vehicle theft and drug abuse violations, the aggregate picture depicts large decreases relative to the recent past.

**Table 2 - First-of-month totals**

	2017	2017	2017	2016	% Change	
	Oct. 1	Nov. 1	Dec. 1	Dec. 1	Monthly	Annual
<b>DOC Facilities</b>						
Federal/Other	125	146	147	138	0.7%	6.5%
Sentenced	10,274	10,246	10,114	10,971	-1.3%	-7.8%
Special Parole	470	482	484	447	0.4%	8.3%
Pre-trial	3,241	3,214	3,196	3,258	-0.6%	-1.9%
<b>Total</b>	<b>14,110</b>	<b>14,088</b>	<b>13,941</b>	<b>14,814</b>	<b>-1.0%</b>	<b>-5.9%</b>
<b>DOC Community</b>						
Transfer Parole	25	27	27	11	-	-
Parole/ Parcom Total	1,103	1,048	1,043	1,199	-0.5%	-13.0%
Parole	943	890	887	1,027	-0.3%	-13.6%
Parcom @ CT	160	158	156	172	-1.3%	-9.3%
Furlough	28	54	59	27	9.3%	118.5%
Trans Placement	45	55	57	72	3.6%	-20.8%
DUI/Home confine.	100	87	91	118	4.6%	-22.9%
Halfway House Total	1,036	1,006	1,005	955	-0.1%	5.2%
Comm Release	503	515	519	503	0.8%	3.2%
TS	64	56	55	52	-1.8%	5.8%
Parole	150	145	139	147	-4.1%	-5.4%
Transfer Parole	3	3	2	1	-	-
Special Parole	313	287	290	252	1.0%	15.1%
TS	545	519	504	601	-2.9%	-16.1%
Nursing home	6	5	5	9	-	-
Special Parole	1,772	1,784	1,794	1,629	0.6%	10.1%
<b>Total</b>	<b>4,660</b>	<b>4,585</b>	<b>4,585</b>	<b>4,621</b>	<b>0.0%</b>	<b>-0.8%</b>

**Table 2a - Admissions, releases & discharges**

	2017	2017	2017	2016	% Change	
	Sept.	Oct.	Nov.	Nov.	Monthly	Annual
<b>Admissions</b>						
Federal/Other	86	94	88	62	-6.4%	41.9%
Remands	149	199	155	158	-22.1%	-1.9%
DUI	5	6	2	7	-66.7%	-71.4%
Parole	24	38	26	29	-31.6%	-10.3%
Trans Plac/Furlough	2	0	3	2	-	-
HWH	35	43	27	32	-37.2%	-15.6%
TS	32	26	35	30	34.6%	16.7%
Special Parole	51	84	62	58	-26.2%	6.9%
New Sentence	227	209	172	193	-17.7%	-10.9%
VOP	68	83	45	61	-45.8%	-26.2%
Pre-trial	1331	1348	1208	1313	-10.4%	-8.0%
<b>Total</b>	<b>1,793</b>	<b>1,850</b>	<b>1,623</b>	<b>1,726</b>	<b>-12.3%</b>	<b>-6.0%</b>
<b>Releases and discharges</b>						
Transfer Parole	4	3	2	5	-33.3%	-
Parole	89	66	85	103	28.8%	-17.5%
Furlough	21	34	27	22	-20.6%	22.7%
Trans. Placement	18	30	25	23	-16.7%	8.7%
Home Confinement DU	20	24	24	48	0.0%	-50.0%
HWH	115	162	150	158	-7.4%	-5.1%
TS	170	163	158	196	-3.1%	-19.4%
Special Parole	120	115	124	108	7.8%	14.8%
Nursing home	0	0	0	1	-	-
End of Sentence	663	650	651	639	0.2%	1.9%
<b>Total</b>	<b>1,220</b>	<b>1,247</b>	<b>1,246</b>	<b>1,303</b>	<b>-0.1%</b>	<b>-4.4%</b>
<b>Pre-trial Releases*</b>						
From Court	474	514	463	557	-9.9%	-16.9%
Release to Bond	431	392	363	413	-7.4%	-12.1%

\* Totals reflect events, not individual offenders

**DOC - Community Release Unit (CRU)**

**Table 3 - Case reviews and release metrics**

	Cases				Approval
	Reviewed	Approved	Denied	Continued	Rate
September	690	338	101	94	49%
October	768	347	137	105	45%
November	735	364	109	91	50%
Nov. '16	891	425	175	117	48%

**Board of Pardons and Paroles**

**Table 4 - Parole hearings, new cases**

	Parole Hearings	Paroles granted	Grant rate	Paroles granted, 2016	Paroles granted, 2015
Sept.	153	80	52%	97	109
Oct.	179	109	61%	67	93
Nov.	185	91	49%	97	96

**Table 4a - Other BOPP actions**

	Reparole from revocation	Reparole from rescission	Closed interest cases	Special parole cases	Transfer parole cases
Sept.	44	2	17	35	1
Oct.	34	1	12	36	1
Nov.	25	3	7	30	0
Nov. '16	56	4	18	39	3

**The pre-trial population**

**Table 5 - Bond ranges for pre-trial detainees**

Bond amount	Oct. 1, 2017	Nov. 1, 2017	Dec. 1, 2017	Dec. 1, 2016
Less than \$20K	547	556	528	595
\$20K to < \$50K	536	530	498	573
\$50K to <\$100K	716	709	703	723
\$100K or higher	1,521	1,579	1,580	1,468
Persons w/bonds	3,320	3,374	3,309	3,359
Over \$1M	152	161	172	142

**Table 5a - Pre-trial, weeks since admission**

Weeks since last DOC admit	Oct. 1, 2017	Nov. 1, 2017	Dec. 1, 2017	Dec. 1, 2016
< 1 week	442	443	405	371
1 to < 3 weeks	357	339	278	371
3 to < 10 weeks	826	798	808	902
10 to < 30 weeks	883	979	990	949
30 wks or more	813	815	828	766
Pre-trial prisoners	3,321	3,374	3,309	3,359

**Table 5b - Pre-trial admits, new offenders**

	Sept. 2017	Oct. 2017	Nov. 2017	Nov. 2016
Arraignments	2,642	2,867	2,513	2,657
Pre-trial Admits	1,331	1,348	1,208	1,313
New to DOC	339	354	307	360
% New	25%	26%	25%	27%

**Court Support Services Division**

**Table 6 - The Jail Re-interview Program**

	Pre-trial admissions	Offender interviews	Offenders released	Released last year
Sept.	1,331	1,088	392	441
Oct.	1,348	1,067	380	428
Nov.	1,208	1,003	367	432

**Table 6a - Pre-trial bail and probation caseloads**

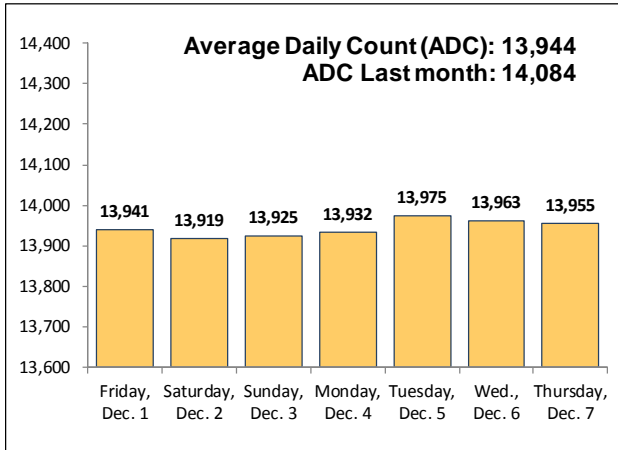
	Pre-trial Bail Case Starts	Client Supv. Starts	Split Sentence Starts	Pre-trial bail cases
Sept.	2,100*	2,020*	390*	12,700*
Oct.	2,090*	2,010*	380*	12,690*
Nov.	2080*	2000*	375*	12680*
Nov. 2016	2,360	2,066	332	13,059

\* CSSD estimates

Note: Figures published here are based on the operational data available at the time of publication. Data in subsequent issues may not agree.

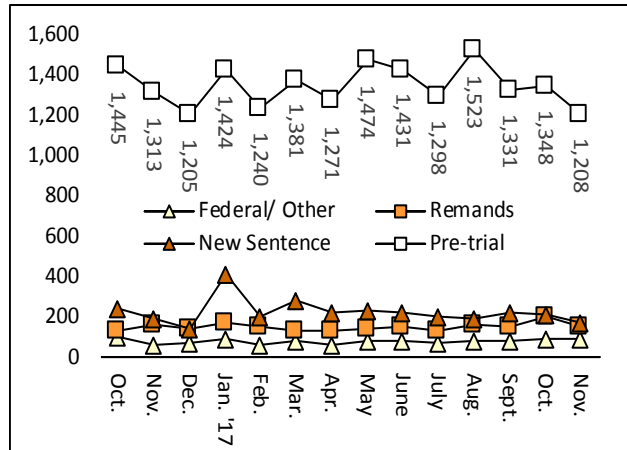
**Chart 3 – Prison population**

First week of the month, avg. daily count (ADC)



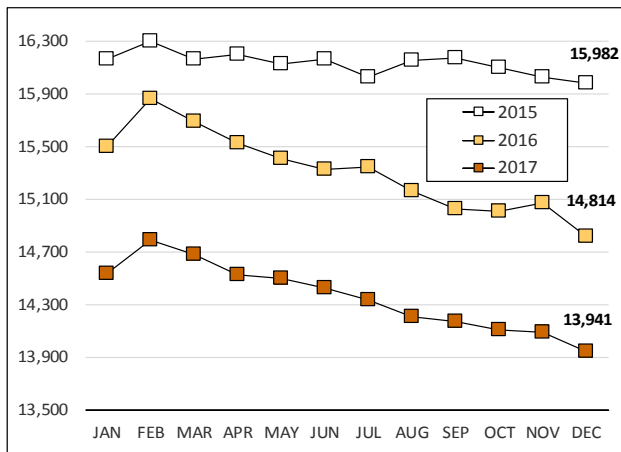
**Chart 6 – Monthly DOC Admissions**

October 2016 through November 2017



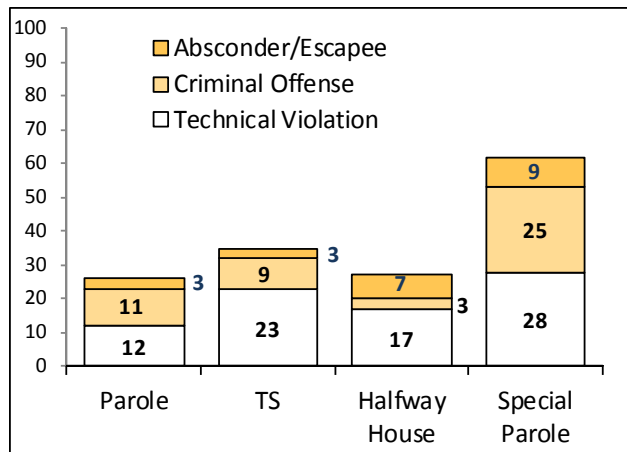
**Chart 4 – Prison population, first-of-month**

2015, 2016 and 2017



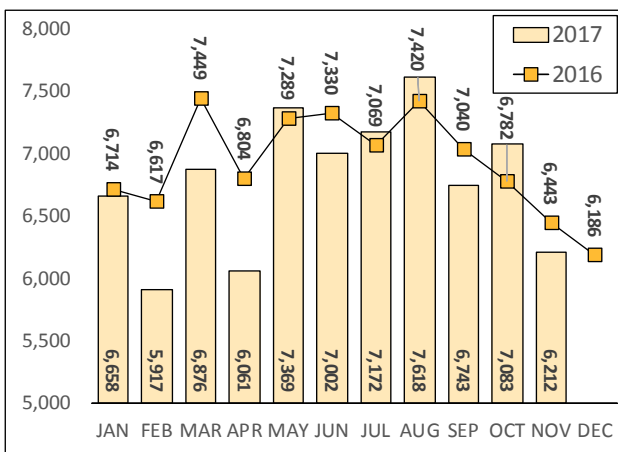
**Chart 7– Remands from community release**

November 2017



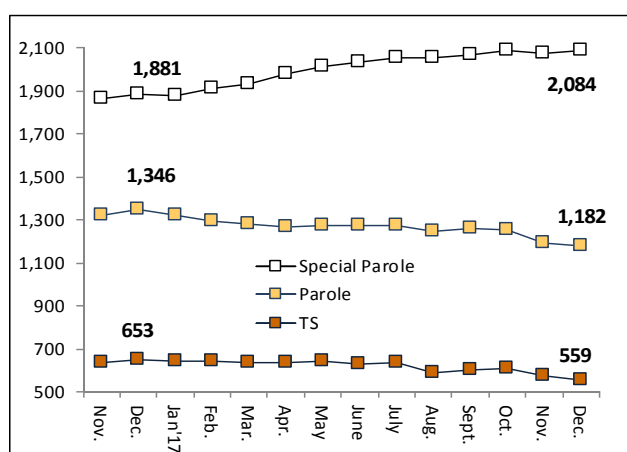
**Chart 5 – Statewide criminal arrests**

2016 and 2017



**Chart 8 – DOC community supervision**

November 1, 2016 through December 1, 2017



Note: Data for all charts, with the exception of Chart 5, was supplied by CT DOC. Data for Chart 5 are for new case starts in the state Offender-Based Tracking System (OBTS). Chart 8 includes offenders in halfway houses.