

OPM - Criminal Justice Policy & Planning Division

Monthly Indicators Report

Highlights

- As anticipated, the state’s prison population rebounded during January. During the month, the prison population jumped by 258 prisoners from 14,532 to 14,790,
- During January, 418 people began a prison sentence with the DOC. The sentenced prison population, however, between January 1st and February 1st, only grew by 206 prisoners (see chart 2). This suggests that many of these newly-sentenced offenders spent less than a month as sentenced prisoners. This might have been due to many offenders having earned jail credit while on pre-trial status, or that a large percentage of prison sentences were for very short periods of incarceration.
- OPM’s Criminal Justice Policy & Planning Division published its 2017 prison population forecast this month. The projection anticipates the prison population will decline moderately over the next 12 months. If accurate, the prison population, measured on a February-to-February basis, will contract by approximately 466 prisoners, or 3.2%.
- The failure of OPM’s forecast to predict the prison population falling as rapidly, and as deeply, as it did through most of 2016, was due to the inability of analysts here and at the DOC to model and produce accurate and reliable length-of-stay calculations for the entire prison population. If planners had this ability, projecting demand for future prison capacity would be greatly improved. Such a model would also allow administrators to benchmark and measure efficiency both system-wide and on a program-to-program basis.

Prison Population Forecast

Since September, the gap between OPM’s February 2016 forecast and the actual prison population has stabilized, settling at about a 660-prisoner difference between the actual and projected values.

This month, OPM published its prison population forecast for 2017. It estimates the prison population through to February 2018. If accurate, the prison population could drop below 14,200 by year’s end.

Our current expectation is that the prison population will continue to decline over the coming year. In large part, this is due to the fact that the system, as a whole, is contracting. Virtually every measure - from criminal arrests to new prison admits and offenders returning to prison –

is trending down. Combined, these factors suggest that the prison population, barring any major external developments, is heading in only one direction, down. Since the prison population cannot decrease indefinitely, the most pressing question facing system prognosticators is, how big will the population be when it begins to bottom out.

While many states have reported recent upticks in crime, CT has been fortunate; crime rates in the state continue to fall. As little as three years ago, few people thought that we would ever see a prison population consistently below 15,000. It may be time to consider whether a prison population in the 12,000-range is entirely reasonable.

TABLE 1 – Prison Population Forecast

	Avg. Daily Count	OPM 2017 Forecast	Inmate difference
JAN '17	14,565	-	-
FEB	14,776	14,776	-
MAR	-	14,658	-
APR	-	14,618	-
MAY	-	14,542	-
JUN	-	14,532	-
JUL	-	14,526	-
AUG	-	14,577	-
SEP	-	14,586	-
OCT	-	14,600	-
NOV	-	14,531	-
DEC	-	14,367	-
JAN '18	-	14,139	-
FEB	-	14,308	-

Avg. Daily Count (ADC) for 1st week of month

Chart 1 – Actual prison population against the OPM forecasts
January 1, 2016 through February 1, 2018

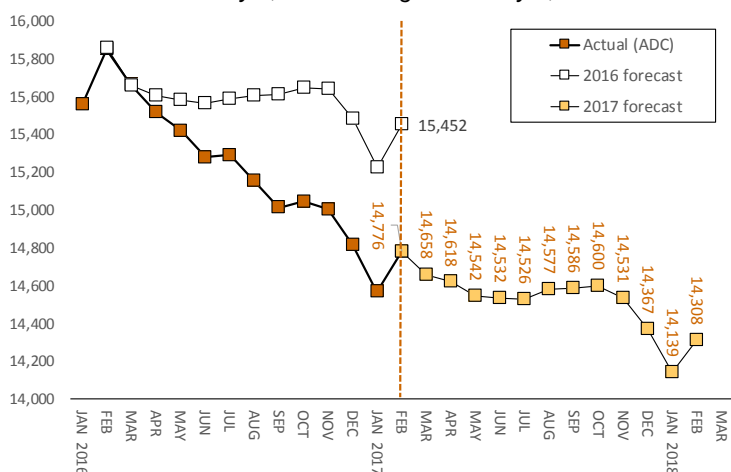


Chart 2 - Criminal justice, monthly counts and flows

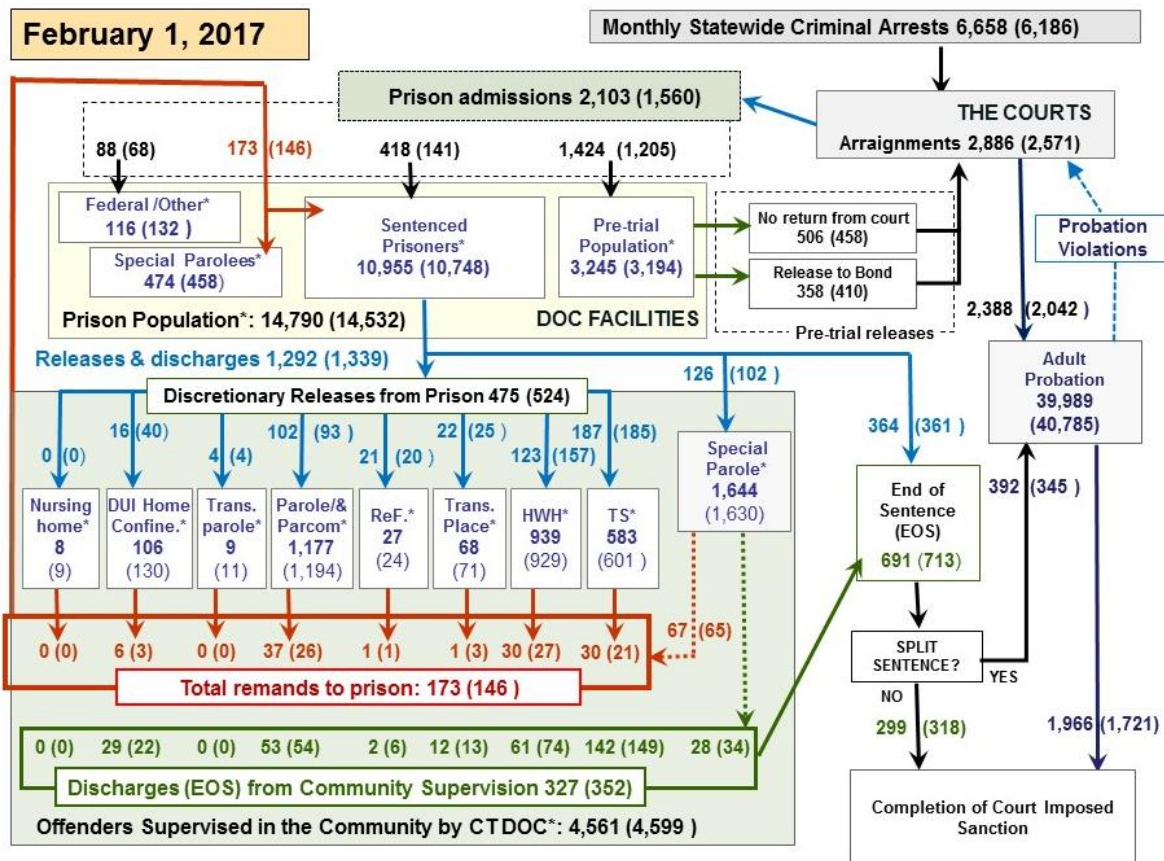
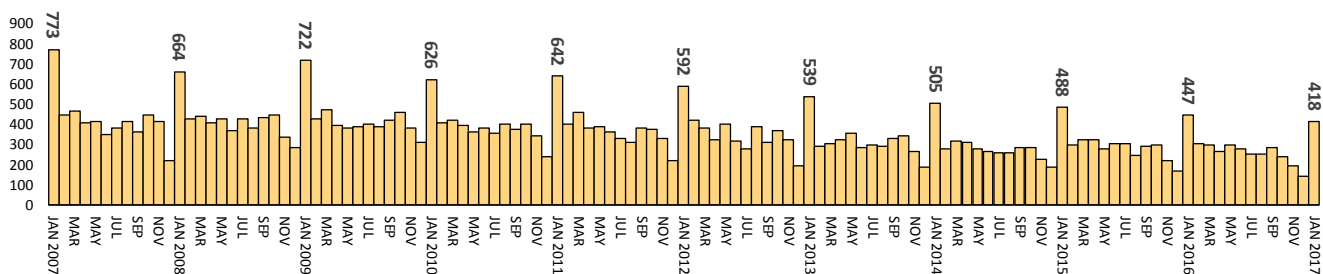


Chart 2 contains monthly operations data for January 2017 and daily counts reported on February 1, 2017. Asterisks (*) indicate the daily count on February 1st. Figures for last month are enclosed by parentheses. Sources: Arrests - OBTS, Court and probation data - CSSD, all other data - CT DOC.

Chart 2a – Sentenced-prison admissions since 2007



This paper often reminds readers that the prison system seems to run by some invisible, internal rhythm that is self-regulating. Given the tens-of-thousands of people that regularly pass through the system, the thousands of people who arrest, prosecute, defend, adjudicate, bond, transport, incarcerate and supervise these people and dozens of internal and external factors that influence the system, it is a genuine wonder to observe how stable the system appears to be.

Chart 2a plots the monthly admissions-to-prison for newly-sentenced prisoners going back to January 2007. The chart illustrates how in every year, sentencing falls off in the last month or two of each year, only to be followed by a strong rebound during January. This phenomenon contributes to what has become known as the January bounce.

While the year-to-year pattern for sentenced admits appears relatively consistent over time, the incremental decline in the number of people being sentenced during January has been quite significant. In January 2017, 418 people were sentenced to prison, 46% fewer than the 773 people who had been sentenced to prison in January 2007.

Sentenced admissions to prison have not only dropped off during the month of January. Annual admissions are down too. During 2007, 5,121 people were admitted to prison in CT to serve a prison sentence. By 2016 - the last year for which full data is available - 3,261 people were admitted to a DOC-facility to begin a sentence. This represents a 36.3% drop in the number of sentenced admissions in just under the last decade.

Table 2 - First-of-month totals

	2016	2017	2017	2016	% Change	
	Dec. 1	Jan. 1	Feb. 1	Feb. 1	Monthly	Annual
DOC Facilities						
Federal/Other	138	132	116	165	-12.1%	-29.7%
Sentenced	10,971	10,748	10,955	11,883	1.9%	-7.8%
Special Parole	447	458	474	488	3.5%	-2.9%
Pre-trial	3,258	3,194	3,245	3,324	1.6%	-2.4%
Total	14,814	14,532	14,790	15,860	1.8%	-6.7%
DOC Community						
Transfer Parole	11	11	9	0	-	0
Parole/ Parcom Total	1,199	1,194	1,177	1,040	-1.4%	13.2%
Parole	1,027	1,020	997	863	-2.3%	15.5%
Parcom @ CT	172	174	180	177	3.4%	1.7%
Furlough	27	24	27	40	12.5%	-32.5%
Trans Placement	72	71	68	66	-4.2%	3.0%
DUI/Home confine.	118	130	106	82	-18.5%	29.3%
Halfway House Total	955	929	939	891	1.1%	5.4%
Comm Release	503	508	493	465	-3.0%	6.0%
TS	52	45	61	45	35.6%	35.6%
Parole	147	126	120	132	-4.8%	-9.1%
Transfer Parole	1	0	0	0	-	0
Special Parole	252	249	265	249	6.4%	6.4%
TS	601	601	583	588	-3.0%	-0.9%
Nursing home	9	9	8	6	-	6
Special Parole	1,629	1,630	1,644	1,412	0.9%	16.4%
Total	4,621	4,599	4,561	4,125	-0.8%	10.6%

Table 2a - Admission, releases & discharges

	2016	2016	2017	2016	% Change	
	Nov.	Dec.	Jan.	Jan.	Monthly	Annual
Admissions						
Federal/Other	62	68	88	107	29.4%	-17.8%
Remands	158	145	173	181	19.3%	-4.4%
DUI	7	3	6	3	100.0%	100.0%
Parole	29	26	37	33	42.3%	12.1%
Trans Plac/Furlough	0	3	2	0	-	-
HWH	32	27	30	33	11.1%	-9.1%
TS	30	21	30	42	42.9%	-28.6%
Special Parole	58	65	67	70	3.1%	-4.3%
New Sentence	193	141	418	447	196.5%	-6.5%
VOP	61	51	106	127	107.8%	-16.5%
Pre-trial	1,313	1,205	1,424	1,441	18.2%	-1.2%
Total	1,726	1,559	2,103	2,176	34.9%	-3.4%
Releases and discharges						
Transfer Parole	5	4	4	0	0.0%	-
Parole	103	93	102	109	9.7%	-6.4%
Furlough	22	20	21	28	5.0%	-25.0%
Trans. Placement	23	25	22	31	-12.0%	-29.0%
Home Confinement DU	48	40	16	30	-60.0%	-46.7%
HWH	158	157	123	105	-21.7%	17.1%
TS	196	185	187	178	1.1%	5.1%
Special Parole	108	102	126	113	23.5%	11.5%
Nursing home	1	0	0	0	-	-
End of Sentence	639	713	691	670	-3.1%	3.1%
Total	1,303	1,339	1,292	1,264	-3.5%	2.2%
Pre-trial Releases*						
From Court	557	458	506	497	10.5%	1.8%
Release to Bond	413	410	358	323	-12.7%	10.8%

* Totals reflect events, not individual offenders

DOC - Community Release Unit

Table 3 - Case reviews and release metrics

	Cases				Approval
	Reviewed	Approved	Denied	Continued	Rate
Nov.	891	425	175	117	48%
Dec.	841	378	148	132	45%
Jan. '17	792	358	126	141	45%
Jan. '16	743	344	123	126	46%

Board of Pardons and Paroles

Table 4 - Parole hearings, new cases

	Parole Hearings	Paroles granted, 2016	Grant rate	Paroles granted, 2015	Paroles granted, 2014
Nov.	172	97	56%	96	103
Dec. '16	175	95	54%	122	107
Jan. '17	149	77	52%	102	81

Table 4a - Other BOPP actions

	Reparole from revocation	Reparole from rescission	Closed interest cases	Special parole cases	Transfer parole cases
Nov.	56	4	32	39	3
Dec. '16	36	3	44	31	4
Jan. '17	52	4	30	22	5
Jan. '16	37	5	41	41	0

The pre-trial population

Table 5 - Bond ranges for pre-trial detainees

Bond amount	Dec. 1, 2016	Jan. 1, 2017	Feb. 1, 2017	Feb. 1, 2016
Less than \$20K	588	580	574	560
\$20K to < \$50K	573	551	566	561
\$50K to < \$100K	723	700	737	718
\$100K or higher	1,468	1,441	1,437	1,502
Persons w/bonds	3,352	3,272	3,314	3,341
Over \$1M	142	147	145	167

Table 5a - Pre-trial, weeks since admission

Weeks since last DOC admit	Dec. 1, 2016	Jan. 1, 2017	Feb. 1, 2017	Feb. 1, 2016
< 1 week	371	345	475	545
1 to < 3 weeks	371	305	371	389
3 to < 10 weeks	902	797	691	773
10 to < 30 weeks	949	1,048	1,012	937
30 wks or more	766	780	767	700
Pre-trial prisoners	3,359	3,275	3,316	3,344

Table 5b - Pre-trial admits, new offenders

	Nov. 2016	Dec. 2016	Jan. 2017	Jan. 2016
Arraignments	2,657	2,571	2,886	2,860
Pre-trial Admits	1,313	1,205	1,424	1,441
New to DOC	360	347	382	355
% New	27%	29%	27%	25%

Court Support Services Division

Table 6 - The Jail Re-interview Program

	Pre-trial admissions	Offender interviews	Offenders released	Released last year
Nov.	1,313	832	432	745
Dec.	1,205	950	474	883
Jan. '17	1,424	1,024	449	872

Table 6a - Pre-trial bail and probation caseloads

	Pre-trial Bail Case Starts	Client Supv. Starts	Split Sentence Starts	Pre-trial bail cases
Nov. '16	2,360	2,066	332	13,059
Dec. '16	1,986	2,042	395	13,070
Jan. '17	2,223	2,388	392	13,041
Jan. '16	2,403	2,320	376	13,777

Note: Figures published here are based on the operational data available at the time of publication. Data in subsequent issues may not agree.

Chart 3 – Prison population

First week of the month, avg. daily count (ADC)

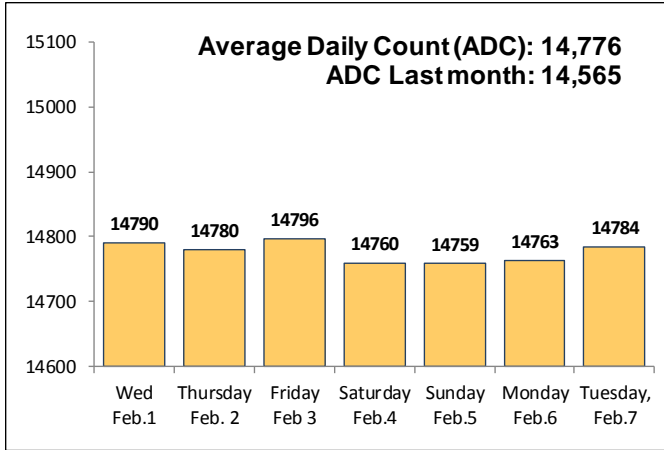


Chart 6 – Monthly DOC Admissions

December 2015 through January 2017

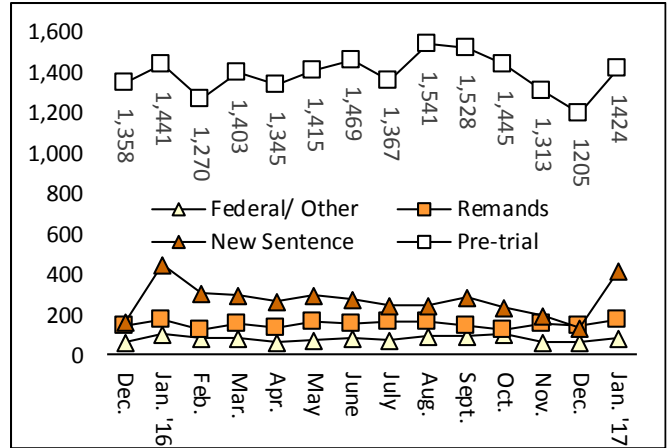


Chart 4 – Prison population, first-of-month

2015, 2016 and 2017

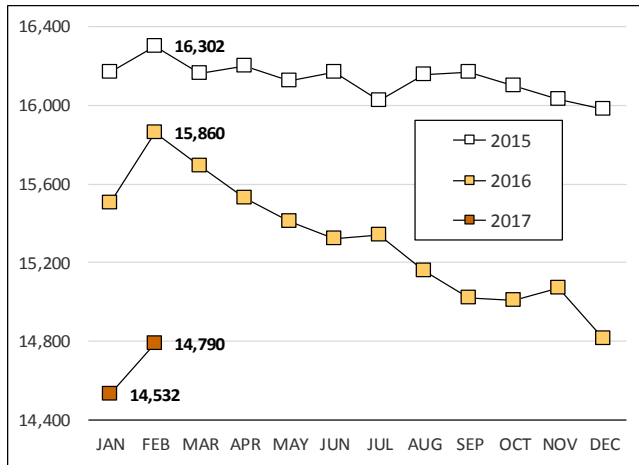


Chart 7 – Remands from community release

January 2017

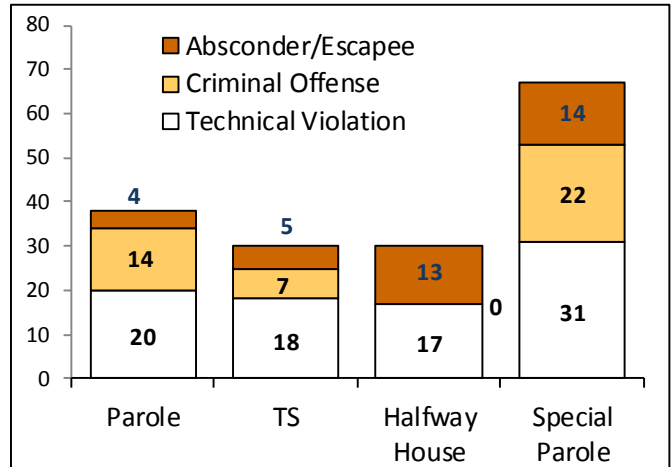


Chart 5 – Statewide criminal arrests

2016 and 2017

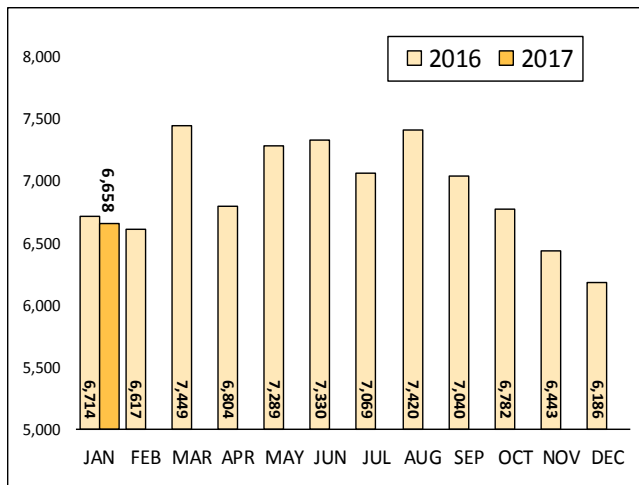
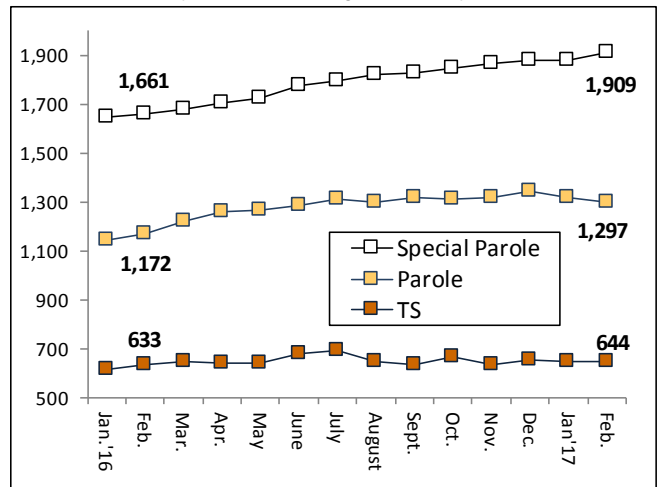


Chart 8 – DOC community supervision

January 1, 2016 through February 1, 2017



Note: Data for all charts, with the exception of Chart 5, was supplied by CT DOC. Data for Chart 5 are for new case starts in the state Offender-Based Tracking System (OBTS). Chart 8 includes offenders in halfway houses.