

OPM - Criminal Justice Policy & Planning Division

Monthly Indicators Report

Highlights

- On January 1, 2017, the state's jails and prisons held 14,532, a 6.7% drop from last year's total.
- The CT prison system is smaller than it has been in two decades and it should continue to track down over the coming year.
- Pretrial diversionary case starts have dropped in recent months. OPM suspects this may be an effect of layoffs at the Jail Re-interview Program (JRI) given the delay between interviews and placement into diversionary programs. In recent months, most JRI staffing has been restored.
- The Criminal Justice Policy & Planning division at OPM will publish annual summary data for a range of criminal justice indicators on its website this month. Among the major findings, violent crime was down by 7% statewide from 2014 to 2015. In the state's three largest cities it was down by 11%.
- Between Nov.1 2016 and January 1, 2017, the prison population declined by 536 offenders. Last year's drop was 528.
- On a year-to-year basis the confined sentenced population is down 7.4%. As a consequence, DOC was able to take 400 beds – the Qs - offline at Osborn CI. According to officials at Osborn CI, 700 inmates were temporarily displaced during the shuttering process.
- Despite a 22-year low for the prison population in Connecticut, the women's population has not seen a similar decline. DOC Commissioner Semple recently created a work group to look at specific issues related to women in CT prisons.

Prison Population Forecast

Since September, the difference between OPM's February forecast and the actual prison population generally stabilized. In hindsight, it appears that the unanticipated decline in the prison population through the spring and summer months accounted for most of the forecast error during 2016.

As OPM prepares the 2017 prison population forecast, revisions to the forecast model are being made. A thorough analysis of our error in 2016, taking into account the impact of changes to the discretionary-release-decision process at the DOC, are being incorporated. Chart 2a provides some discussion regarding changes to the state's mix of prison and community-supervised populations.

TABLE 1 – Prison Population Forecast

| | Avg. Daily Count | OPM 2016 Forecast | Inmate difference |
|---------|------------------|-------------------|-------------------|
| JAN '16 | 15,556 | - | - |
| FEB | 15,852 | 15,860 | 8 |
| MAR | 15,664 | 15,659 | -5 |
| APR | 15,517 | 15,604 | 87 |
| MAY | 15,418 | 15,579 | 161 |
| JUN | 15,279 | 15,567 | 288 |
| JUL | 15,290 | 15,588 | 298 |
| AUG | 15,153 | 15,605 | 452 |
| SEP | 15,012 | 15,613 | 601 |
| OCT | 15,045 | 15,644 | 599 |
| NOV | 15,002 | 15,639 | 637 |
| DEC | 14,815 | 15,480 | 665 |
| JAN '17 | 14,565 | 15,227 | 662 |
| FEB | - | 15,451 | - |

Avg. Daily Count (ADC) for 1st week of month

Our expectation, today, is that the prison population will continue to decline over the coming year. In large part, this is due to the fact that the system, as a whole, is contracting. Virtually every measure from criminal arrests to discharges has tracked consistently lower over the past several years. Taken in sum, these factors suggest that the prison population, barring any major external developments, is heading in one direction, down. Since the prison population cannot decrease indefinitely, the most pressing question facing the DOC is, where and when will the population bottom out.

Chart 1 – Actual prison population against the OPM forecasts
January 1, 2015 through February 1, 2017

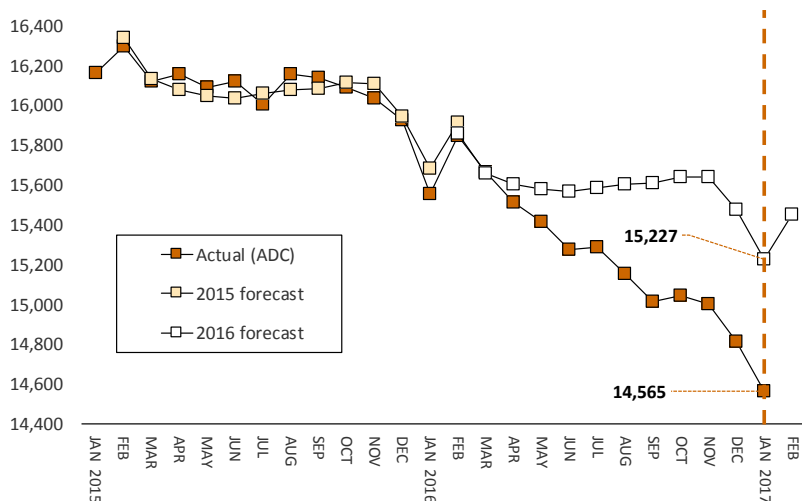


Chart 2 - Criminal justice, monthly counts and flows

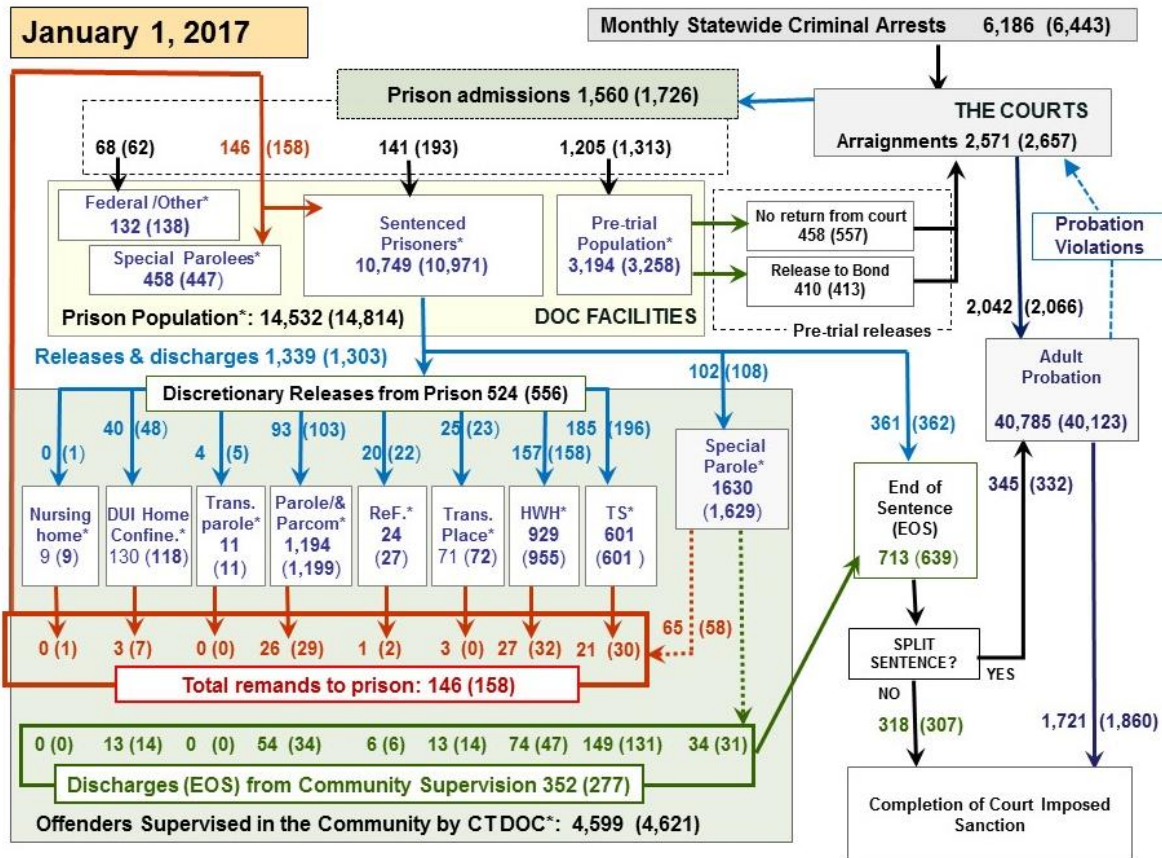
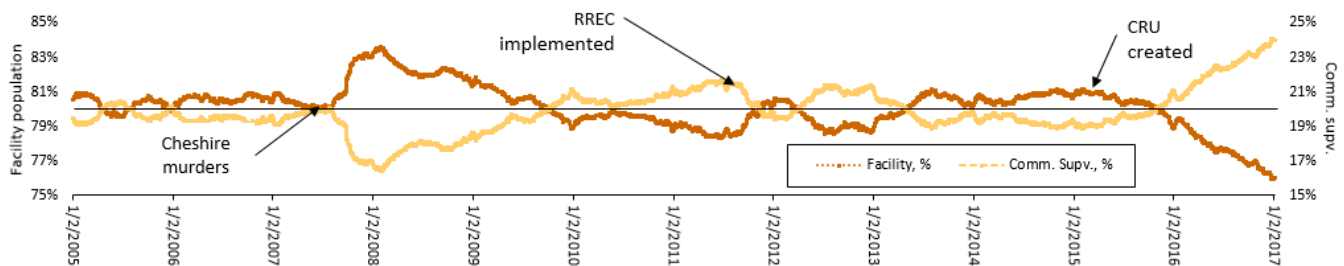


Chart 2 contains monthly operations data for December 2016 and daily counts reported on January 1, 2017. Asterisks (*) indicate the daily count on January 1st. Figures for last month are enclosed by parentheses. Sources: Arrests - OBTS, Court and probation data - CSSD, all other data - CT DOC.

Chart 2a – The community population and the facility population



In chart 2a we observe trend lines of the relationship between offenders in DOC custody who were, either, in prison or in programs where they were supervised in the community. In periods of normal operational stability, the chart suggests that the prison system exhibits a propensity to settle at a level where 80% of offenders are in prison and 20%, are in the community. Over the past twelve years, however, the DOC has experienced several considerable shifts in this balance.

The first occurred in the immediate aftermath of the Cheshire murders in 2007 when the system reacted with a massive drop in the number of offenders being released into community supervision programs. By February of the following year, the prison population had swelled by 1,000 prisoners.

The second, major, significant shift in the percentage-balance between facility and community populations began in spring 2015 when the DOC restructured the decision-making processes guiding the preparation, review and management of community release cases. Chief among these changes was the creation of the Community Release Unit (CRU) in March 2015. As a result of these internal reforms, the prison population is down by over 1,600 prisoners and the percentage of offenders under community supervision is at its highest level in recent memory.

This past year's drop in the prison population has been a surprise to all. These latest reforms, which have been monitored closely, suggest that the efficiencies squeezed out of discretionary release processes deserve much of the credit.

Table 2 – The first-of-month totals

| | 2016 | 2016 | 2017 | 2016 | % Change | |
|-----------------------|---------------|---------------|---------------|---------------|--------------|--------------|
| | Nov. 1 | Dec. 1 | Jan. 1 | Jan. 1 | Monthly | Annual |
| DOC Facilities | | | | | | |
| Federal/Other | 149 | 138 | 132 | 138 | -4.3% | -4.3% |
| Sentenced | 11,152 | 10,971 | 10,748 | 11,601 | -2.0% | -7.4% |
| Special Parole | 435 | 447 | 458 | 521 | 2.5% | -12.1% |
| Pre-trial | 3,332 | 3,258 | 3,194 | 3,240 | -2.0% | -1.4% |
| Total | 15,068 | 14,814 | 14,532 | 15,500 | -1.9% | -6.2% |
| DOC Community | | | | | | |
| Transfer Parole | 12 | 11 | 0 | 0 | - | - |
| Parole/ Parcom Total | 1,161 | 1,199 | 1,194 | 1,005 | -0.4% | 18.8% |
| Parole | 988 | 1,027 | 1,020 | 828 | -0.7% | 23.2% |
| Parcom @ CT | 183 | 172 | 174 | 177 | 1.2% | -1.7% |
| Furlough | 36 | 27 | 24 | 38 | -11.1% | -36.8% |
| Trans Placement | 80 | 72 | 71 | 46 | -1.4% | 54.3% |
| DUI/Home confine. | 95 | 118 | 130 | 91 | 10.2% | 42.9% |
| Halfway House Total | 939 | 955 | 929 | 974 | -2.7% | -4.6% |
| Comm Release | 474 | 503 | 508 | 526 | 1.0% | -3.4% |
| TS | 57 | 52 | 45 | 46 | -13.5% | -2.2% |
| Parole | 158 | 147 | 126 | 158 | -14.3% | -20.3% |
| Transfer Parole | 2 | 1 | 0 | 0 | - | - |
| Special Parole | 248 | 252 | 249 | 244 | -1.2% | 2.0% |
| TS | 579 | 601 | 601 | 569 | 0.0% | 5.6% |
| Nursing home | 8 | 9 | 9 | 8 | 0.0% | 12.5% |
| Special Parole | 1,617 | 1,629 | 1,630 | 1,405 | 0.1% | 16.0% |
| Total | 4,527 | 4,621 | 4,588 | 4,136 | -0.7% | 10.9% |

Table 2a – Admissions, releases & discharges*

| | 2016 | 2016 | 2016 | 2015 | % Change | |
|--------------------------------|--------------|--------------|--------------|--------------|--------------|---------------|
| | Oct. | Nov. | Dec. | Dec. | Monthly | Annual |
| Admissions | | | | | | |
| Federal/Other | 101 | 62 | 68 | 70 | 9.7% | -2.9% |
| Remands | 131 | 158 | 145 | 144 | -8.2% | 0.7% |
| DUI | 3 | 7 | 3 | 3 | -57.1% | 0.0% |
| Parole | 20 | 29 | 26 | 31 | -10.3% | -16.1% |
| Trans Plac/Furlough | 1 | 0 | 3 | 0 | - | - |
| HWH | 19 | 32 | 27 | 26 | -15.6% | 3.8% |
| TS | 32 | 30 | 21 | 38 | -30.0% | -44.7% |
| Special Parole | 55 | 58 | 65 | 46 | 12.1% | 41.3% |
| New Sentence | 242 | 193 | 141 | 167 | -26.9% | -15.6% |
| VOP | 78 | 61 | 51 | 59 | -16.4% | -13.6% |
| Pre-trial | 1,445 | 1,313 | 1,205 | 1,358 | -8.2% | -11.3% |
| Total | 1,919 | 1,726 | 1,559 | 1,739 | -9.7% | -10.4% |
| Releases and discharges | | | | | | |
| Transfer Parole | 7 | 5 | 4 | 0 | -20.0% | - |
| Parole | 104 | 103 | 93 | 124 | -9.7% | -25.0% |
| Furlough | 32 | 22 | 20 | 35 | -9.1% | -42.9% |
| Trans. Placement | 13 | 23 | 25 | 18 | 8.7% | 38.9% |
| Home Confinement DUI | 25 | 48 | 40 | 36 | -16.7% | 11.1% |
| HWH | 113 | 158 | 157 | 155 | -0.6% | 1.3% |
| TS | 177 | 196 | 185 | 237 | -5.6% | -21.9% |
| Special Parole | 93 | 108 | 102 | 131 | -5.6% | -22.1% |
| Nursing home | 0 | 1 | 0 | 0 | - | - |
| End of Sentence | 712 | 639 | 713 | 840 | 11.6% | -15.1% |
| Total | 1,276 | 1,303 | 1,339 | 1,576 | 2.8% | -15.0% |
| Pre-trial Releases* | | | | | | |
| From Court | 495 | 557 | 458 | 587 | -17.8% | -22.0% |
| Release to Bond | 392 | 413 | 410 | 439 | -0.7% | -6.6% |

DOC - Community Release Unit

Table 3 - Case reviews and release metrics

| | Cases | | | | Approval Rate |
|----------|----------|----------|--------|-----------|---------------|
| | Reviewed | Approved | Denied | Continued | |
| Oct. | 801 | 341 | 127 | 153 | 43% |
| Nov. '16 | 891 | 425 | 175 | 117 | 48% |
| Dec. '16 | 841 | 378 | 148 | 132 | 45% |
| Dec. '15 | 953 | 455 | 152 | 152 | 48% |

Board of Pardons and Paroles

Table 4 - Parole hearings, new cases

| | Parole Hearings | Paroles granted, 2016 | Grant rate | Paroles granted, 2015 | Paroles granted, 2014 |
|------|-----------------|-----------------------|------------|-----------------------|-----------------------|
| Oct. | 171 | 67 | 39% | 93 | 110 |
| Nov. | 175 | 97 | 55% | 96 | 103 |
| Dec. | 175 | 97 | 55% | 122 | 107 |

Table 4a - Other BOPP actions

| | Reparole from revocation | Reparole rescission | Closed interest cases | Special parole cases | Transfer parole cases |
|----------|--------------------------|---------------------|-----------------------|----------------------|-----------------------|
| Oct. | 40 | 5 | 14 | 47 | 7 |
| Nov. | 56 | 4 | 32 | 39 | 3 |
| Dec. '16 | 36 | 3 | 44 | 31 | 4 |
| Dec. '15 | 55 | 1 | 33 | 32 | 0 |

The pre-trial population

Table 5 - Bond ranges for pre-trial detainees

| Bond amount | Nov. 1, 2016 | Dec. 1, 2016 | Jan. 1, 2017 | Jan. 1, 2016 |
|-------------------|--------------|--------------|--------------|--------------|
| Less than \$20K | 632 | 588 | 580 | 557 |
| \$20K to < \$50K | 528 | 573 | 551 | 581 |
| \$50K to < \$100K | 718 | 723 | 700 | 719 |
| \$100K or higher | 1,474 | 1,468 | 1,441 | 1,501 |
| Persons w/bonds | 3,352 | 3,352 | 3,272 | 3,358 |
| Over \$1M | 144 | 144 | 147 | 177 |

Table 5a - Pre-trial, weeks since admission

| Weeks since last DOC admit | Nov. 1, 2016 | Dec. 1, 2016 | Jan. 1, 2017 | Jan. 1, 2016 |
|----------------------------|--------------|--------------|--------------|--------------|
| < 1 week | 395 | 371 | 345 | 346 |
| 1 to < 3 weeks | 443 | 371 | 305 | 421 |
| 3 to < 10 weeks | 854 | 902 | 797 | 862 |
| 10 to < 30 weeks | 905 | 949 | 1,048 | 994 |
| 30 wks or more | 757 | 766 | 780 | 738 |
| Pre-trial prisoners | 3,354 | 3,359 | 3,275 | 3,361 |

Table 5b - Pre-trial admits, new offenders

| | Oct. 2016 | Nov. 2016 | Dec. 2016 | Dec. 2015 |
|------------------|-----------|-----------|-----------|-----------|
| Arraignments | 2,828 | 2,657 | 2,571 | 2,901 |
| Pre-trial Admits | 1,445 | 1,313 | 1,205 | 1,358 |
| New to DOC | 410 | 360 | 347 | 402 |
| % New | 28% | 27% | 29% | 30% |

Court Support Services Division

Table 6 - The Jail Re-interview Program

| | Pre-trial admissions | Offender interviews | Offenders released | Releases last year |
|------|----------------------|---------------------|--------------------|--------------------|
| Oct. | 1,445 | 726 | 428 | 896 |
| Nov. | 1,313 | 832 | 432 | 745 |
| Dec. | 1,205 | 950 | 474 | 883 |

Table 6a Pre-trial bail and probation caseloads

| | Pre-trial Bail Case Starts | Client Supv. Starts | Split Sentence Starts | Pre-trial bail cases |
|----------|----------------------------|---------------------|-----------------------|----------------------|
| Oct. | 2,310 | 2,114 | 403 | 13,074 |
| Nov. | 2,142 | 2,066 | 332 | 13,059 |
| Dec. '16 | 1,986 | 2,042 | 395 | 13,070 |
| Dec. '15 | 2,290 | 2,305 | 403 | 13,793 |

Note: Figures published here are based on the operational data available at the time of publication. Data in subsequent issues may not agree.

Chart 3 – Prison population

First week of the month, avg. daily count (ADC)

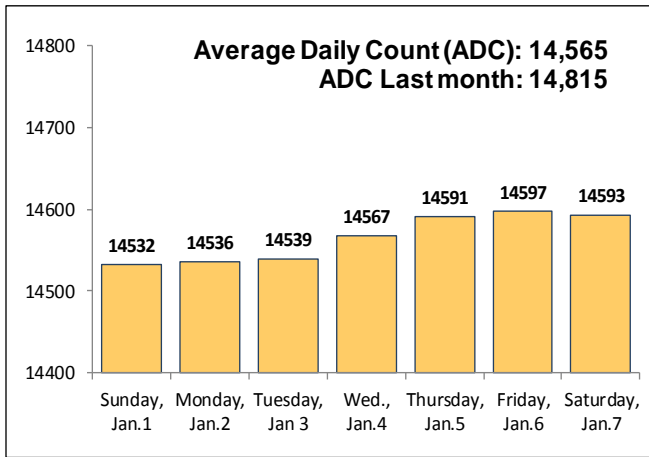


Chart 6 – Monthly DOC Admissions

October 2015 through December 2016

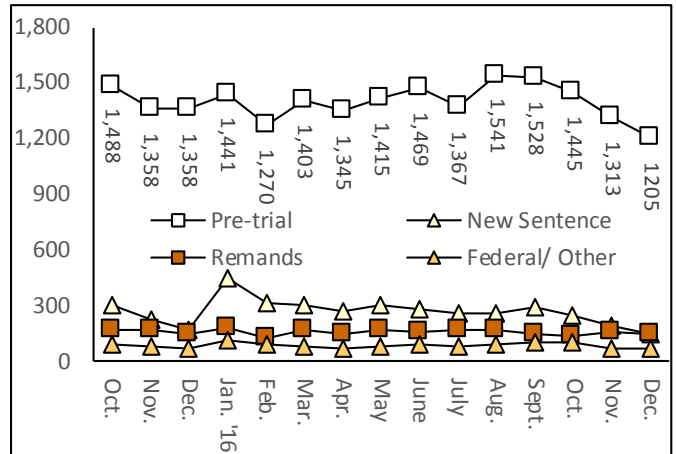


Chart 4 – Prison population, first-of-month

2014, 2015 and 2016

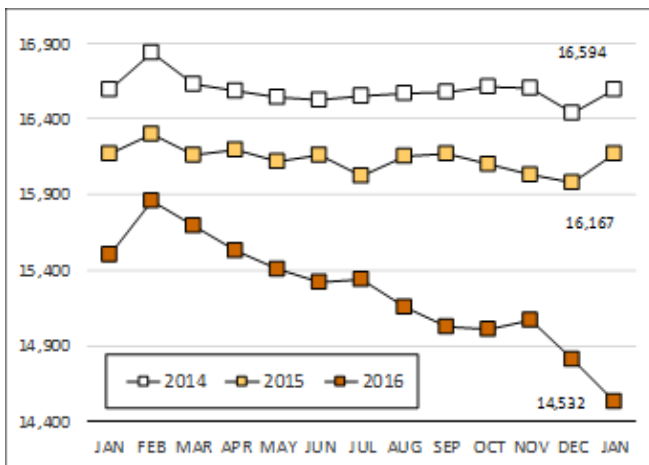


Chart 7– Remands from community release

December 2016

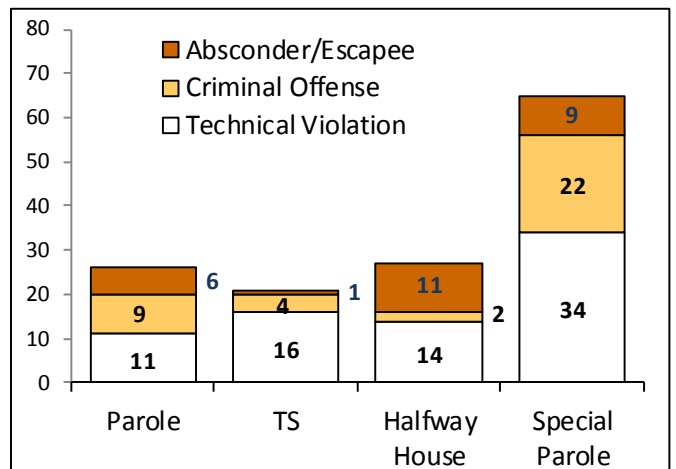


Chart 5 – Statewide criminal arrests

2015 and 2016

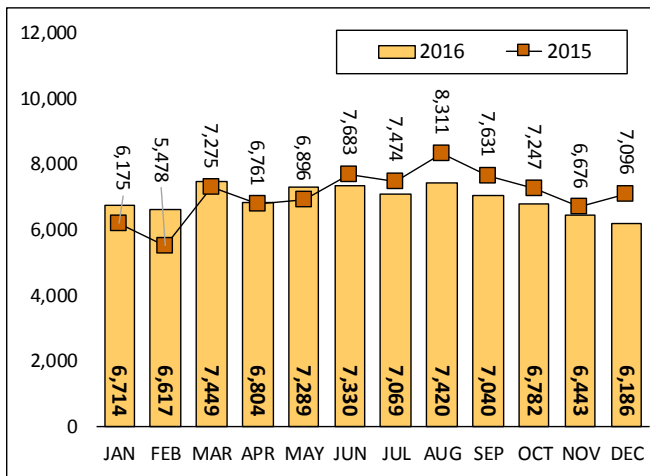
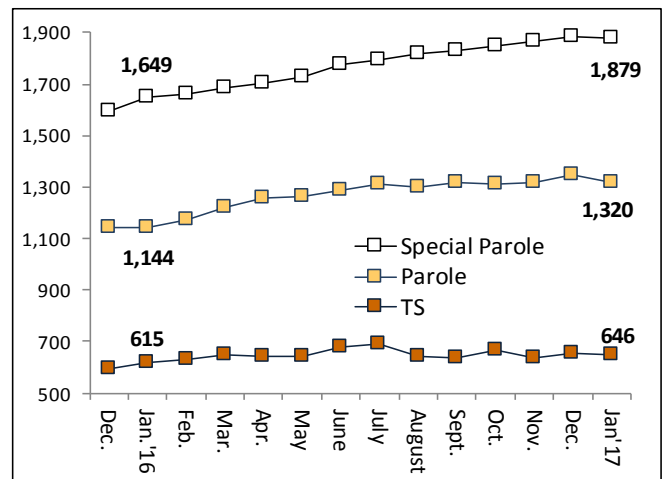


Chart 8 – DOC community supervision

November 1, 2015 through December 1, 2016



Note: Data for all charts, with the exception of Chart 5, was supplied by CT DOC. Data for Chart 5 are for new case starts in the state Offender-Based Tracking System (OBTS). Chart 8 includes offenders in halfway houses.