

# OPM - Criminal Justice Policy & Planning Division

## Monthly Indicators Report

### Highlights

- During May, the total prison population dropped by 73 prisoners. Pre-trial prisoners accounted for almost three quarters of this decline.
- In June, the legislature voted several reforms to the state’s bail system. Included was an end to cash-only bail and a restriction of the authority of judges to set bail for most misdemeanors. These reforms could reduce the number of pre-trial prisoners held in DOC facilities. OPM will monitor the impact of these changes as they take effect.
- Of 917 people who died from a drug overdose in CT last year, 52% had been admitted to the CT DOC at some point in the past. Overdose deaths in the state, and nationally, have increased dramatically during the last five years (see chart 2a).
- Overdose deaths were not the only measure to feature a very high death rate by former prisoners. In 2015, there were 123 homicides in the state, 48% of the victims were former prisoners. In 2016, 42% of the 86 homicide victims were former prisoners.
- Parole caseloads increased by 2% this month compared to last year. Special parole caseloads, however, were up 16% during the same period (see table 2).
- OPM is considering monitoring the number of offenders who remain in prison beyond their voted-to-parole (VTP) date. This figure, and the reasons behind these delayed releases from prison are not well understood. The data on individual offenders is thought to be available in CaseNotes, the DOC’s case management system.

### Prison Population Forecast

The average daily count (ADC) of prisoners contracted at a moderate pace in May. In the past, May was typically the month in which the prison population inflected and began to grow as police activity increased along with warmer weather and longer days. This is the second year in which this old pattern has not been observed (see chart 1).

There is some evidence that the Jail Re-interview Program is working its way back to the level of pre-trial releases it had before last year’s layoffs forced a contraction in the program. Although the number of releases reported this year have not reached the level of last year (see table 6), the number of pre-trial prisoners released from prison to bond or at court has rebounded considerably in recent months.

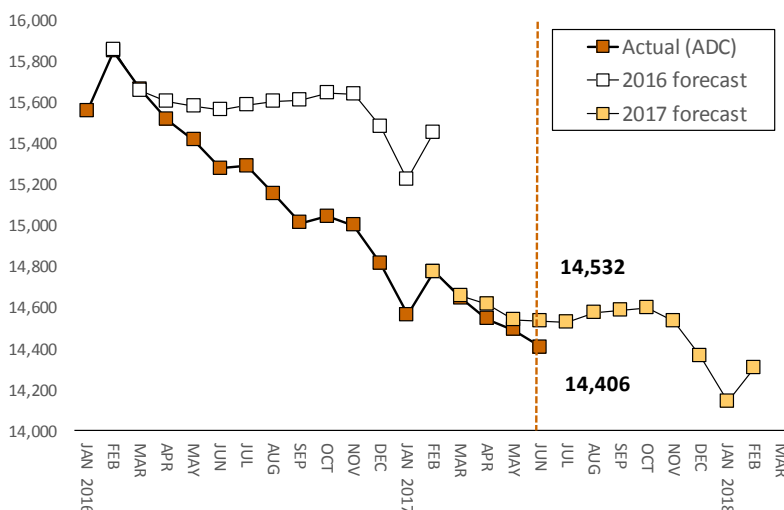
Overall, the prison population has contracted in every month since February. While it is mirroring the trendline for 2016, the slope of the decline in the prison population is not as extreme. Last year, OPM credited DOC’s Community Release Unit (CRU) with much of the credit for moving the numbers down. While we had suspected that most of the savings had been realized in 2016, it appears clear that the CRU is continuing to insure efficient operation at the back end of the prison system.

TABLE 1 – Prison Population Forecast

	Avg. Daily Count	OPM 2017 Forecast	Inmate difference
JAN '17	14,565	-	-
FEB	14,776	14,776	-
MAR	14,646	14,658	12
APR	14,543	14,618	75
MAY	14,491	14,542	51
JUN	14,406	14,532	126
JUL	-	14,526	-
AUG	-	14,577	-
SEP	-	14,586	-
OCT	-	14,600	-
NOV	-	14,531	-
DEC	-	14,367	-
JAN '18	-	14,139	-
FEB	-	14,308	-

Avg. Daily Count (ADC) for 1st week of month

Chart 1 – Actual prison population against the OPM forecasts  
January 1, 2016 through February 1, 2018



## Chart 2 - Criminal justice, monthly counts and flows

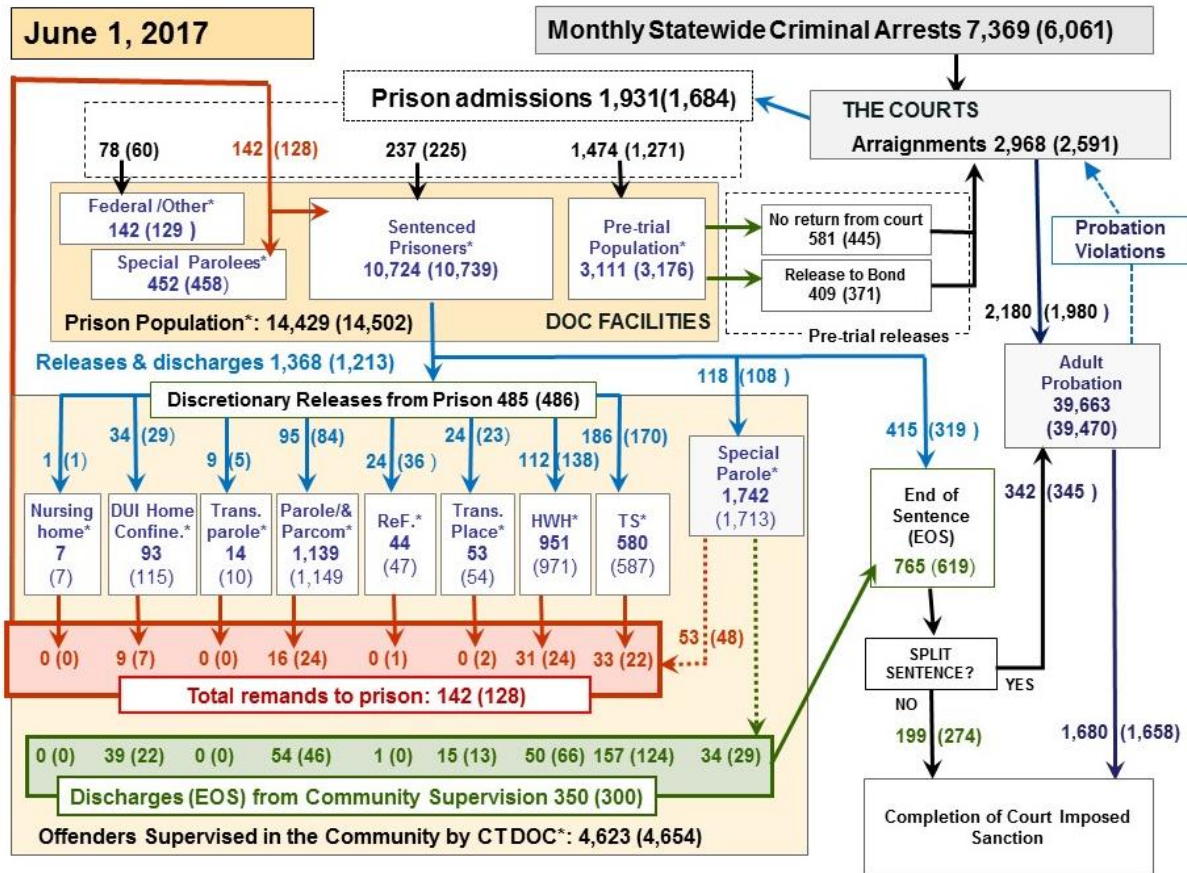
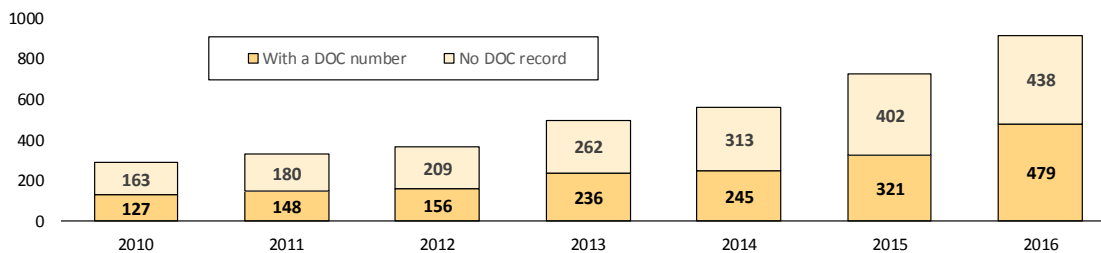


Chart 2 contains monthly operations data for May 2017 and daily counts reported on June 1, 2017. Asterisks (\*) indicate the daily count on June 1<sup>st</sup>. Figures for last month are enclosed by parentheses. Sources: Arrests - OBTS, Court and probation data - CSSD, all other data - CT DOC.

## Chart 2a – Opioid deaths and CT prisoners



The New York Times (6/6/2017) estimated that up to 65,000 people died of drug overdoses in the US in 2016. In CT, 917 people died, a 27% increase over the 2015 figure. OPM, which has been monitoring drug deaths reported by the Office of the Chief Medical Examiner (OCME) for several years recently determined that 52% of 2016 overdose victims been admitted to the DOC and assigned a DOC inmate number. This is an alarmingly high rate given the small percentage of state residents who have ever been admitted to prison.

Qualitative research conducted by OPM found that almost everyone in prison admitted to using illicit drugs before arriving in prison. Among prisoners, marijuana-use was virtually ubiquitous. In fact, the only offenders who did not report using drugs in our study were self-described, heavy-users of alcohol.

Opioid abuse is driving the recent rise in overall overdose deaths in the state and nationally. National overdose deaths last year surpassed the peak number of deaths for gun fatalities, HIV-related deaths and car crashes. Our analysis of OCME and DOC data revealed that overdoses are probably the single most common cause of death among prisoners within 60 days of release from prison.

While Whites accounted for almost 80% of state overdose deaths, OPM analysis reveals that opioid-related death rates have increased almost identically among every major racial and ethnic group in CT. Given the high concentration of drug abusers in prison, it would make good public policy sense to develop and expand programs to address opioid-use among prisoners and educate them about the resources that may be available to users after prison.

**Table 2 - First-of-month totals**

	2017	2017	2017	2016	% Change	
	Apr. 1	May 1	June 1	June 1	Monthly	Annual
<b>DOC Facilities</b>						
Federal/Other	111	129	142	147	10.1%	-3.4%
Sentenced	10,798	10,739	10,724	11,537	-0.1%	-7.0%
Special Parole	474	458	452	457	-1.3%	-1.1%
Pre-trial	3,140	3,176	3,111	3,181	-2.0%	-2.2%
<b>Total</b>	<b>14,523</b>	<b>14,502</b>	<b>14,429</b>	<b>15,322</b>	<b>-0.5%</b>	<b>-5.8%</b>
<b>DOC Community</b>						
Transfer Parole	7	10	14	2	-	-
Parole/ Parcom Total	1,139	1,149	1,139	1,117	-0.9%	2.0%
Parole	972	986	976	934	-1.0%	4.5%
Parcom @ CT	167	163	163	183	0.0%	-10.9%
Furlough	39	47	44	35	-6.4%	25.7%
Trans Placement	58	54	53	64	-1.9%	-17.2%
DUI/Home confine.	121	115	93	111	-19.1%	-16.2%
Halfway House Total	954	971	951	943	-2.1%	0.8%
Comm Release	491	490	474	442	-3.3%	7.2%
TS	46	58	51	47	-12.1%	8.5%
Parole	126	124	136	170	9.7%	-20.0%
Transfer Parole	0	0	0	1	-	-
Special Parole	291	299	289	272	-3.3%	6.3%
TS	590	587	580	622	-1.2%	-6.8%
Nursing home	8	7	7	8	-	-
Special Parole	1,687	1,714	1,742	1,500	1.6%	16.1%
<b>Total</b>	<b>4,603</b>	<b>4,654</b>	<b>4,623</b>	<b>4,402</b>	<b>-0.7%</b>	<b>5.0%</b>

**Table 2a - Admissions, releases & discharges**

	2016	2016	2017	2016	% Change	
	Feb.	Mar.	Apr.	Apr.	Monthly	Annual
<b>Admissions</b>						
Federal/Other	86	60	78	76	30.0%	2.6%
Remands	132	128	142	168	10.9%	-15.5%
DUI	5	7	9	8	28.6%	12.5%
Parole	27	24	16	27	-33.3%	-40.7%
Trans Plac/Furlough	1	3	0	1	-	-
HWH	22	24	31	36	29.2%	-13.9%
TS	29	22	33	41	50.0%	-19.5%
Special Parole	48	48	53	55	10.4%	-3.6%
New Sentence	287	225	237	296	5.3%	-19.9%
VOP	82	57	71	101	24.6%	-29.7%
Pre-trial	1,381	1,271	1,474	1,415	16.0%	4.2%
<b>Total</b>	<b>1,886</b>	<b>1,684</b>	<b>1,931</b>	<b>1,955</b>	<b>14.7%</b>	<b>-1.2%</b>
<b>Releases and discharges</b>						
Transfer Parole	1	5	9	3	-	-
Parole	102	84	95	116	13.1%	-18.1%
Furlough	38	36	24	33	-33.3%	-27.3%
Trans. Placement	20	23	24	19	4.3%	26.3%
Home Confinement DU	47	29	34	30	17.2%	13.3%
HWH	139	138	112	123	-18.8%	-8.9%
TS	201	170	186	224	9.4%	-17.0%
Special Parole	136	108	118	141	9.3%	-16.3%
Nursing home	1	1	1	0	-	-
End of Sentence	748	619	765	783	23.6%	-2.3%
<b>Total</b>	<b>1,433</b>	<b>1,213</b>	<b>1,368</b>	<b>1,472</b>	<b>12.8%</b>	<b>-7.1%</b>
<b>Pre-trial Releases*</b>						
From Court	555	445	581	505	30.6%	15.0%
Release to Bond	397	371	409	360	10.2%	13.6%

\* Totals reflect events, not individual offenders

**DOC - Community Release Unit (CRU)**

**Table 3 - Case reviews and release metrics**

	Cases				Approval Rate
	Reviewed	Approved	Denied	Continued	
Mar.	826	408	126	116	49%
April	739	357	117	95	48%
May '17	806	376	95	113	47%
May '16	821	403	107	118	49%

**Board of Pardons and Paroles**

**Table 4 - Parole hearings, new cases**

	Parole Hearings	Paroles granted	Grant rate	Paroles granted,	Paroles granted,
				2016	2015
Mar.	175	95	54%	93	67
Apr.	176	102	58%	101	67
May	192	100	52%	95	83

**Table 4a - Other BOPP actions**

	Reparole from revocation	Reparole from rescission	Closed interest cases	Special parole cases	Transfer parole cases
	Mar.	34	3	34	44
Apr.	47	5	22	38	4
May '17	44	2	20	40	13
May '16	51	6	13	30	22

**The pre-trial population**

**Table 5 - Bond ranges for pre-trial detainees**

Bond amount	Apr. 1, 2017	May 1, 2017	June 1, 2017	June 1, 2016
Less than \$20K	532	580	548	592
\$20K to <\$50K	524	523	493	534
\$50K to <\$100K	730	721	734	624
\$100K or higher	1,424	1,420	1,407	1,501
Persons w/bonds	3,210	3,244	3,182	3,251
Over \$1M	150	150	144	159

**Table 5a - Pre-trial, weeks since admission**

Weeks since last DOC admit	Apr. 1, 2017	May 1, 2017	June 1, 2017	June 1, 2016
< 1 week	428	454	411	407
1 to < 3 weeks	332	351	344	374
3 to < 10 weeks	826	785	785	841
10 to < 30 weeks	884	902	881	919
30 wks or more	746	755	776	712
Pre-trial prisoners	3,216	3,247	3,197	3,253

**Table 5b - Pre-trial admits, new offenders**

	Mar. 2017	Apr. 2017	May 2017	May 2016
Arraignments	2,739	2,591	2,968	2,933
Pre-trial Admits	1,381	1,271	1,474	1,415
New to DOC	367	335	409	377
% New	27%	26%	28%	27%

**Court Support Services Division**

**Table 6 - The Jail Re-interview Program**

	Pre-trial admissions	Offender interviews	Offenders released	Released last year
Mar.	1,381	1022	481	856
Apr.	1,271	998	417	755
May	1,474	1,210	515	774

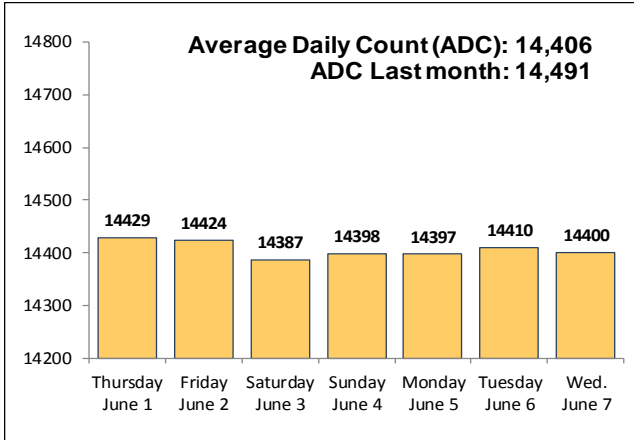
**Table 6a - Pre-trial bail and probation caseloads**

	Pre-trial Bail Case Starts	Client Supv. Starts	Split Sentence Starts	Pre-trial bail cases
Mar.	2,096	2,301	398	12,847
April	2,075	1,980	345	12,737
May 2017	2,335	2,180	420	12,756
May 2016	2,396	2,332	458	13,409

Note: Figures published here are based on the operational data available at the time of publication. Data in subsequent issues may not agree.

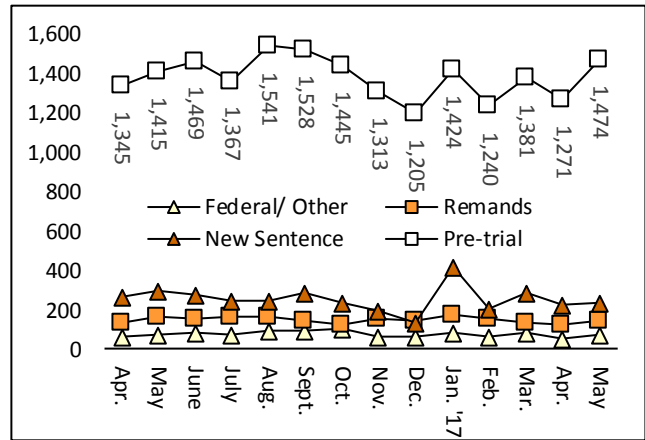
**Chart 3 – Prison population**

First week of the month, avg. daily count (ADC)



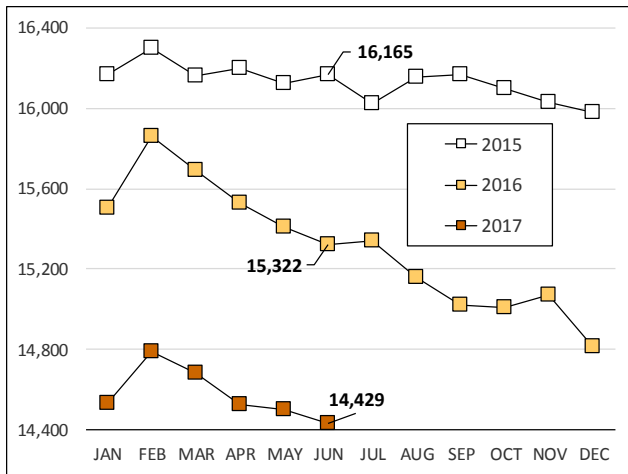
**Chart 6 – Monthly DOC Admissions**

March 2016 through May 2017



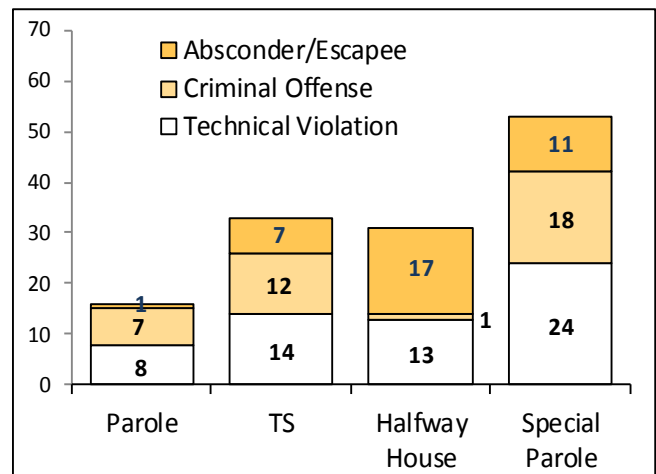
**Chart 4 – Prison population, first-of-month**

2015, 2016 and 2017



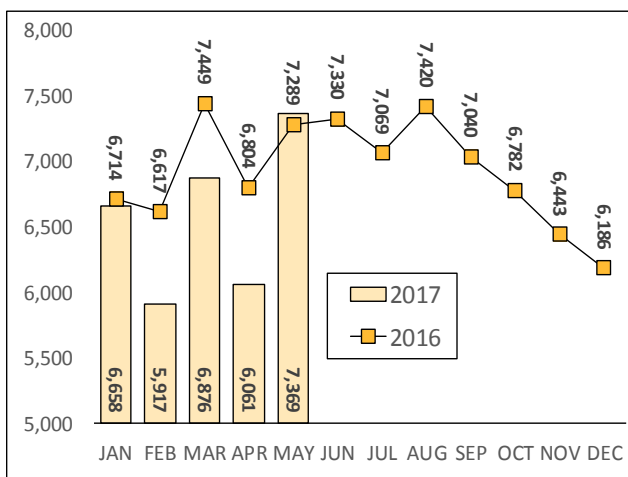
**Chart 7– Remands from community release**

May 2017



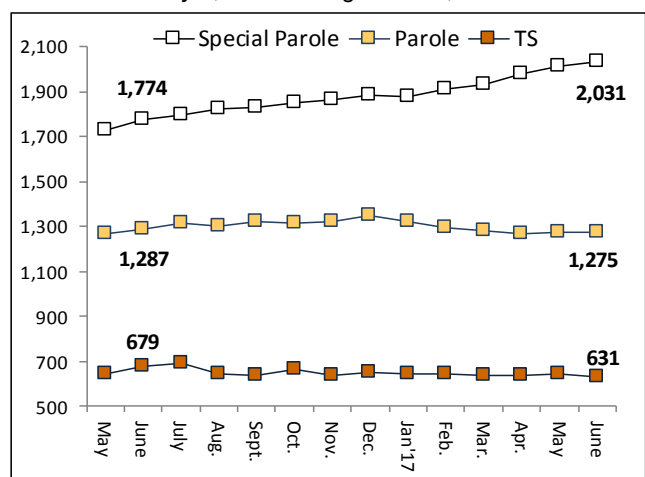
**Chart 5 – Statewide criminal arrests**

2016 and 2017



**Chart 8 – DOC community supervision**

May 1, 2016 through June 1, 2017



Note: Data for all charts, with the exception of Chart 5, was supplied by CT DOC. Data for Chart 5 are for new case starts in the state Offender-Based Tracking System (OBTS). Chart 8 includes offenders in halfway houses.