

# OPM - Criminal Justice Policy & Planning Division

## Monthly Indicators Report

### Highlights

- During April, the prison population held steady. On May 1<sup>st</sup>, 14,502 prisoners were held in state prisons and jails. A month earlier on April 1, there were 14,523 prisoners.
- OPM recently completed a study of recidivism among male, sentenced offenders who left prison during 2011. This analysis also looked at recidivism among sex offenders in the cohort and incidence of new sexual offenses that were uncovered by the criminal justice system. In the 5 years since their release 188 men (1.6%), out of a cohort of 11,495 were charged with a new sex offense. When only violent sexual offenses were considered, the arrest rate dropped to 1.1% (122 offenders).
- Among 1,565 men who had previously been identified as sex offenders, 4.2% (65 men) were charged with a new sex crime. When violent offenses were excluded, however, the arrest rate for new sexual charges dropped to 2.3% (36 men). From this group, offenders who had ever been charged with Public Indecency (53A-186), a class B misdemeanor, had the highest re-arrest rates for both violent and non-violent sexual offenses, 5.9% and 13.6%.
- Of the 11,495 men who were studied in the latest report, only 2,609 were completing their first prison sentences with the DOC. In other words, 77% of offenders released in 2011 were already recidivators.
- The size of the special parole population continues to be a topic of concern. April was a milestone month in which the number of special parolees in the community topped 2000 (see chart 2a).

### Prison Population Forecast

The prison population contracted at a moderate pace during April. The total population dropped by 21 inmates; the sentenced population declined 59. As Table 1 shows, the gap between the forecast population and the actual population narrowed over the course of the month.

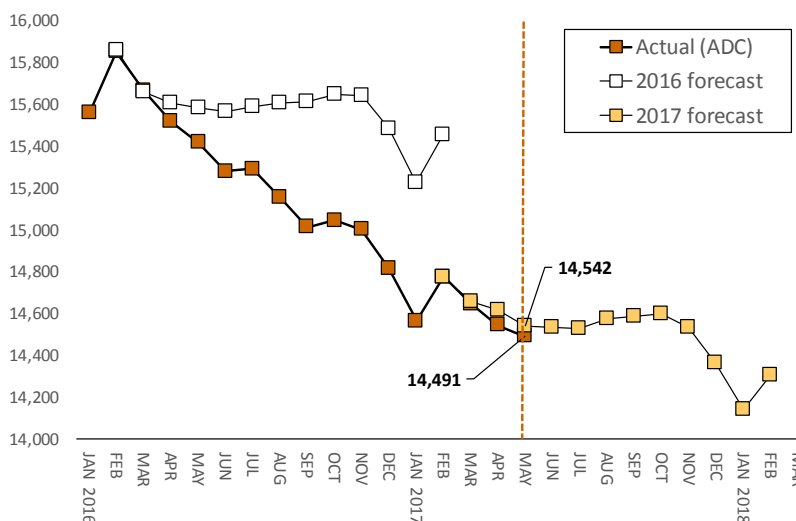
Forecasting the prison population has become more difficult in recent years, in part, because the mix of prisoners, according to their prisoner status, is slowly changing. Although the sentenced population is still the largest component of the total prison population, sentenced prisoners now account for only 74% of the total population. In 2011, 78% of inmates were sentenced prisoners. In a system where most changes take place on the margins, this change represents a new challenge when forecasting.

	Avg. Daily Count	OPM 2017 Forecast	Inmate difference
JAN '17	14,565	-	-
FEB	14,776	14,776	-
MAR	14,646	14,658	12
APR	14,543	14,618	75
MAY	14,491	14,542	51
JUN	-	14,532	-
JUL	-	14,526	-
AUG	-	14,577	-
SEP	-	14,586	-
OCT	-	14,600	-
NOV	-	14,531	-
DEC	-	14,367	-
JAN '18	-	14,139	-
FEB	-	14,308	-

*Avg. Daily Count (ADC) for 1st week of month*

As the sentenced population has fallen so too has the pre-trial population, albeit at a much slower rate. Compared to 2011, the current sentenced population is down 21%. During the same period, the pre-trial population dropped by only 6%. Bucking these trends, the number of special parolees, who are back in prison having been remanded, is up 56%. This number is not shocking when we consider that the number of special parolees in the community has grown by 87% since 2011.

**Chart 1 – Actual prison population against the OPM forecasts**  
January 1, 2016 through February 1, 2018



## Chart 2 - Criminal justice, monthly counts and flows

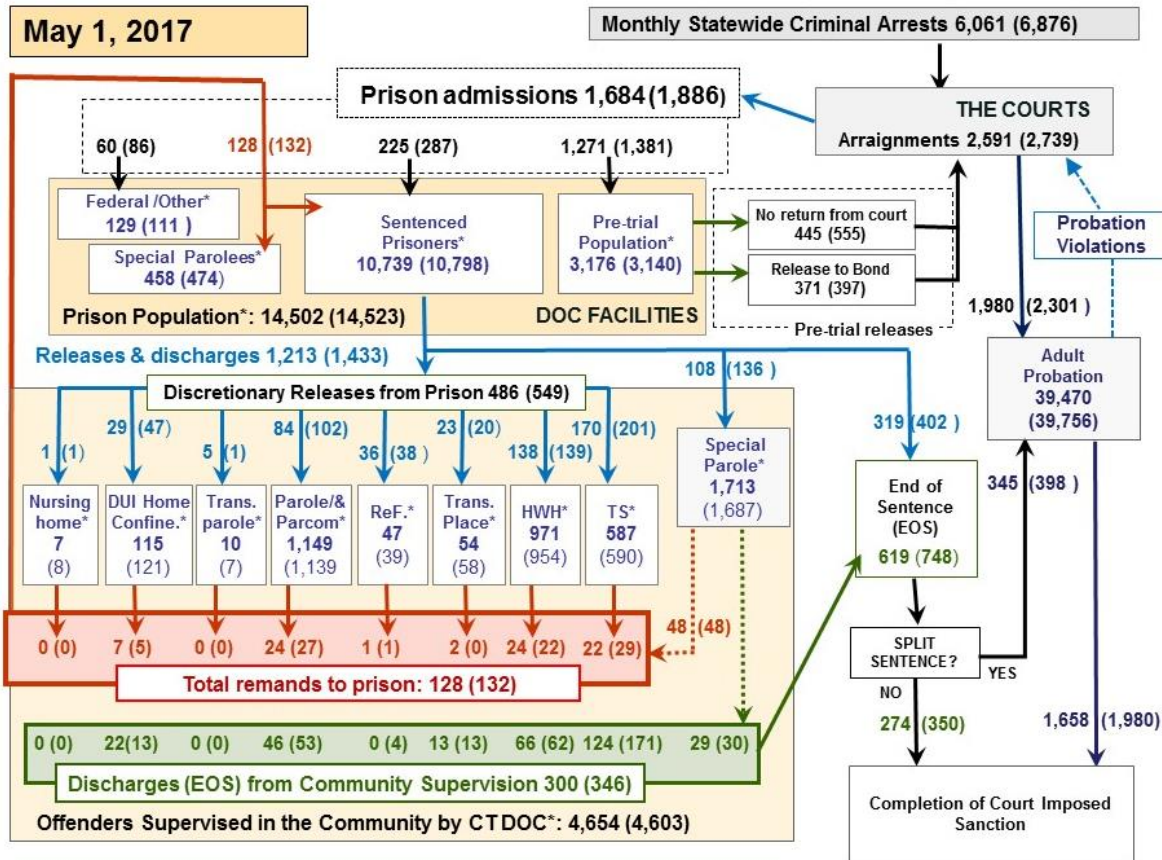
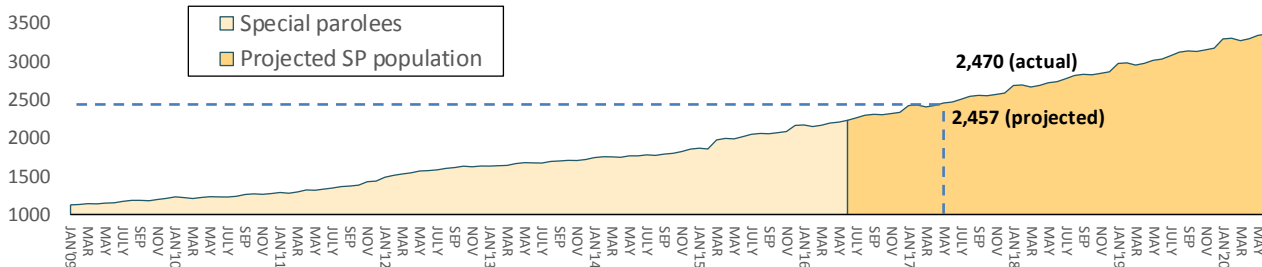


Chart 2 contains monthly operations data for April 2017 and daily counts reported on May 1, 2017. Asterisks (\*) indicate the daily count on May 1<sup>st</sup>. Figures for last month are enclosed by parentheses. Sources: Arrests - OBTS, Court and probation data - CSSD, all other data - CT DOC.

## Chart 2a – Special parole caseloads continue to grow



This chart was first featured in the June 2016 issue of this publication. It was intended to draw our readers' attention to the steadily rising number of offenders who were being sentenced to special parole supervision. OPM is concerned that, given existing rates of growth, the special parole population would reach 3,360 by June 1, 2020.

This month, the special parole population in the community topped 2,000 for the first time. To provide some perspective, this number is larger than the combined caseloads for parole and transitional supervision. Given this milestone, it seemed reasonable to revisit our projection. In June 2016, OPM projected that the special parole population on May 1, 2017 would total 2,457. In fact, the total special parole population on May 1

was 2,470. This number includes 1,713 special parolees who are currently under supervision, another 299 special parolees in halfway houses, and 458 special parolees who have been remanded to custody.

Unchecked growth in the size of the special parole population may create capacity problems for the DOC in the near future. Special parolees are generally supervised for longer periods than other offenders. In addition, they often require more resources than other offenders. This, coupled with higher remand rates, means that special parolees are consuming more and more resources, both in the community and in prison. It may be time to initiate a deeper discussion about the future of special parole and its role and function.

**Table 2 - First-of-month totals**

	2017	2017	2017	2016	% Change	
	Mar. 1	Apr. 1	May 1	May 1	Monthly	Annual
<b>DOC Facilities</b>						
Federal/Other	109	111	129	146	16.2%	-11.6%
Sentenced	10,888	10,798	10,739	11,672	-0.5%	-8.0%
Special Parole	486	474	458	482	-3.4%	-5.0%
Pre-trial	3,196	3,140	3,176	3,111	1.1%	2.1%
<b>Total</b>	<b>14,679</b>	<b>14,523</b>	<b>14,502</b>	<b>15,411</b>	<b>-0.1%</b>	<b>-5.9%</b>
<b>DOC Community</b>						
Transfer Parole	7	7	10	0	-	-
Parole/ Parcom Total	1,153	1,139	1,149	1,106	0.9%	3.9%
Parole	977	972	986	937	1.4%	5.2%
Parcom @ CT	176	167	163	179	-2.4%	-8.9%
Furlough	25	39	47	26	20.5%	80.8%
Trans Placement	59	58	54	63	-6.9%	-14.3%
DUI/Home confine.	94	121	115	134	-5.0%	-14.2%
Halfway House Total	939	954	971	933	1.8%	4.1%
Comm Release	486	491	490	462	-0.2%	6.1%
TS	50	46	58	44	26.1%	31.8%
Parole	125	126	124	159	-1.6%	-22.0%
Transfer Parole	0	0	0	0	-	-
Special Parole	278	291	299	268	2.7%	11.6%
TS	587	590	587	597	-0.5%	-1.7%
Nursing home	8	8	7	9	-	-
Special Parole	1,656	1,687	1,714	1,457	1.6%	17.6%
<b>Total</b>	<b>4,528</b>	<b>4,603</b>	<b>4,654</b>	<b>4,325</b>	<b>1.1%</b>	<b>7.6%</b>

**Table 2a - Admissions, releases & discharges**

	2016	2016	2017	2016	% Change	
	Feb.	Mar.	Apr.	Apr.	Monthly	Annual
<b>Admissions</b>						
Federal/Other	66	86	60	62	-30.2%	-3.2%
Remands	154	132	128	138	-3.0%	-7.2%
DUI	1	5	7	2	40.0%	250.0%
Parole	31	27	24	19	-11.1%	26.3%
Trans Plac/Furlough	1	1	3	1	-	-
HWH	32	22	24	22	9.1%	9.1%
TS	27	29	22	33	-24.1%	-33.3%
Special Parole	62	48	48	61	0.0%	-21.3%
New Sentence	206	287	225	268	-21.6%	-16.0%
VOP	67	82	57	87	-30.5%	-34.5%
Pre-trial	1,240	1,381	1,271	1,345	-8.0%	-5.5%
<b>Total</b>	<b>1,666</b>	<b>1,886</b>	<b>1,684</b>	<b>1,813</b>	<b>-10.7%</b>	<b>-7.1%</b>
<b>Releases and discharges</b>						
Transfer Parole	3	1	5	0	400.0%	-
Parole	94	102	84	107	-17.6%	-21.5%
Furlough	18	38	36	22	-5.3%	63.6%
Trans. Placement	21	20	23	9	15.0%	155.6%
Home Confinement DU	26	47	29	48	-38.3%	-39.6%
HWH	124	139	138	138	-0.7%	0.0%
TS	162	201	170	193	-15.4%	-11.9%
Special Parole	119	136	108	115	-20.6%	-6.1%
Nursing home	0	1	1	1	-	-
End of Sentence	680	748	619	706	-17.2%	-12.3%
<b>Total</b>	<b>1,247</b>	<b>1,433</b>	<b>1,213</b>	<b>1,339</b>	<b>-15.4%</b>	<b>-9.4%</b>
<b>Pre-trial Releases*</b>						
From Court	443	555	445	517	-19.8%	-13.9%
Release to Bond	392	397	371	368	-6.5%	0.8%

\* Totals reflect events, not individual offenders

**DOC - Community Release Unit (CRU)**

**Table 3 - Case reviews and release metrics**

	Cases				Approval Rate
	Reviewed	Approved	Denied	Continued	
Feb.	768	380	105	122	49%
Mar.	826	408	126	116	49%
April '17	739	357	117	95	48%
April '16	925	488	135	113	53%

**Board of Pardons and Paroles**

**Table 4 - Parole hearings, new cases**

	Parole Hearings	Paroles granted, 2017	Grant rate	Paroles granted, 2016	Paroles granted, 2015
Feb.	191	100	52%	75	88
Mar.	175	95	54%	93	67
Apr.	176	102	58%	101	67

**Table 4a - Other BOPP actions**

	Reparole from revocation	Reparole from rescission	Closed interest cases	Special parole cases	Transfer parole cases
Feb.	38	4	21	36	1
Mar.	34	3	34	44	15
Apr., '17	47	5	22	38	4
Apr., '16	59	7	21	41	1

**The pre-trial population**

**Table 5 - Bond ranges for pre-trial detainees**

Bond amount	Mar. 1, 2017	Apr. 1, 2017	May 1, 2017	May 1, 2016
Less than \$20K	530	532	580	543
\$20K to <\$50K	555	524	523	547
\$50K to <\$100K	723	730	721	611
\$100K or higher	1444	1424	1,420	1,519
Persons w/bonds	3,252	3,210	3,244	3,220
Over \$1M	149	150	150	155

**Table 5a - Pre-trial, weeks since admission**

Weeks since last DOC admit	Mar. 1, 2017	Apr. 1, 2017	May 1, 2017	May 1, 2016
< 1 week	433	428	454	513
1 to < 3 weeks	308	332	351	375
3 to < 10 weeks	822	826	785	778
10 to < 30 weeks	926	884	902	862
30 wks or more	767	746	755	694
Pre-trial prisoners	3,256	3,216	3,247	3,222

**Table 5b - Pre-trial admits, new offenders**

	Feb. 2017	Mar. 2017	Apr. 2017	Apr. 2016
Arraignments	2,434	2,739	2,591	2,746
Pre-trial Admits	1,240	1,381	1,271	1,345
New to DOC	335	367	335	337
% New	27%	27%	26%	25%

**Court Support Services Division**

**Table 6 - The Jail Re-interview Program**

	Pre-trial admissions	Offender interviews	Offenders released	Released last year
Feb.	1,240	899	390	776
Mar.	1,381	1022	481	856
Apr.	1,271	998	417	755

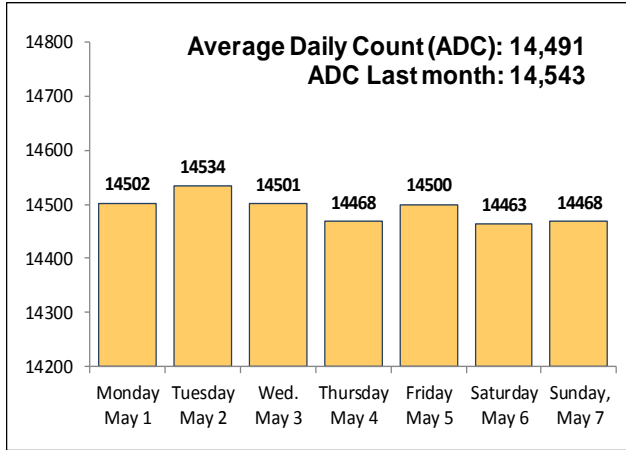
**Table 6a - Pre-trial bail and probation caseloads**

	Pre-trial Bail Case Starts	Client Supv. Starts	Split Sentence Starts	Pre-trial bail cases
Feb.	1,902	1,757	358	12,750
Mar.	2,096	2,301	398	12,847
Apr., 2017	2,075	1,980	345	12,737
Apr., 2017	2,216	2,198	406	13,454

Note: Figures published here are based on the operational data available at the time of publication. Data in subsequent issues may not agree.

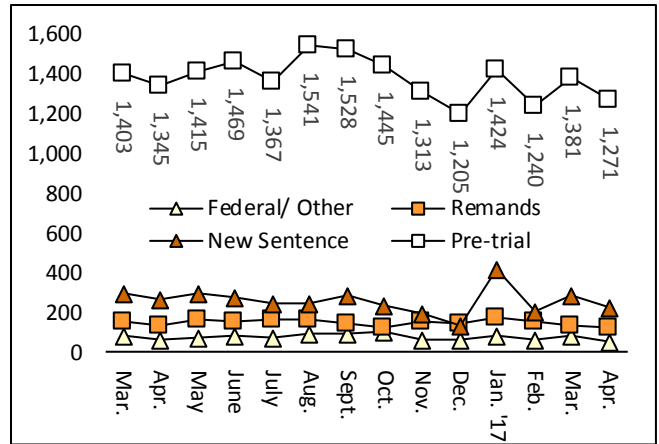
**Chart 3 – Prison population**

First week of the month, avg. daily count (ADC)



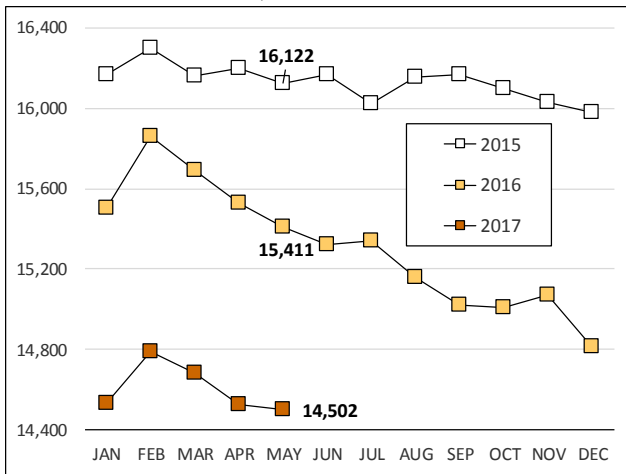
**Chart 6 – Monthly DOC Admissions**

March 2016 through April 2017



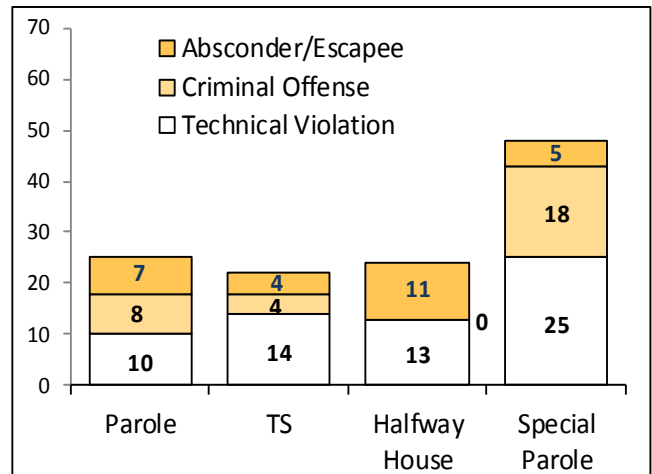
**Chart 4 – Prison population, first-of-month**

2015, 2016 and 2017



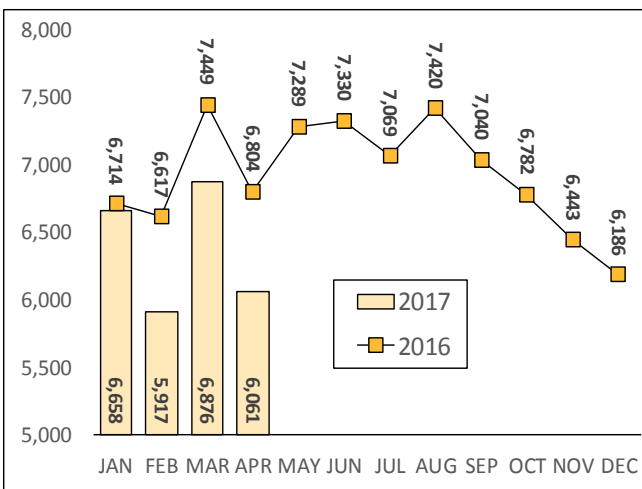
**Chart 7 – Remands from community release**

April 2017



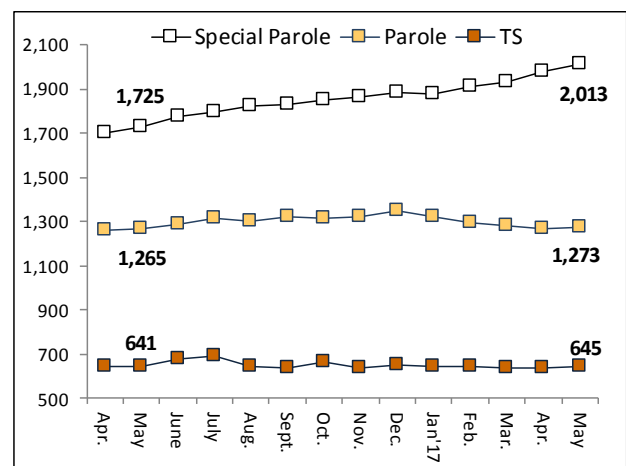
**Chart 5 – Statewide criminal arrests**

2016 and 2017



**Chart 8 – DOC community supervision**

March 1, 2016 through April 1, 2017



Note: Data for all charts, with the exception of Chart 5, was supplied by CT DOC. Data for Chart 5 are for new case starts in the state Offender-Based Tracking System (OBTS). Chart 8 includes offenders in halfway houses.