

OPM - Criminal Justice Policy & Planning Division

Monthly Indicators Report

Highlights

- The prison population on February 1, 2018 stood at 13,817, an increase of 168 from January 1st, but a decrease of 973 from February 1, 2017 and 2,043 from February 1, 2016 – a 13% reduction in two years.
- OPM has produced a new prison population forecast for the remainder of 2018 through February 2019. If accurate, the prison population could drop to 12,901 by the end of the year. This projection assumes continuation of all current statutes and policies. Proposed changes could increase or decrease the actual population.
- Last month this paper reported that Jerry Mercado escaped from the medium security, Carl Robinson Correctional Institute in Enfield, CT. After an intensive investigation and ten day multi-agency search, Mercado was apprehended without incident in Canton, Georgia on January 17th. Mercado was then extradited to Connecticut on February 2nd and is being held in the maximum security Northern Correctional Institute.
- Chart 2a explains recent changes to OPM’s arrest data source. Arrest analysis will now be produced based on counts tallied in CRMV rather than OBTS.
- The 2018 recidivism report is complete. Tracking a cohort of offenders released or discharged in 2014 for 36 months, recidivism rates for re-arrest, reconviction, new sentences and all returns to prison are included. In general, the 2014 cohort experienced better outcomes than those in 2005, 2008 and 2011.

Prison Population Forecast

Following consecutive years of underestimating the downward pressure on the prison population, OPM predicts a 5.25% reduction in 2018. This projection is more aggressive than OPM has been in prior years, yet still more conservative than the actual declines in 2016 and 2017. The prison population fell by 6.8% in 2016. In 2017 that rate tapered a bit to 6.5%, suggesting that the population will fall less abruptly in 2018.

Predicting when the prison population would resume its pre- 2016 patterns has proven difficult. It was anticipated that the population would ease back into a traditional seasonal pattern once release-related efficiencies had been exhausted. Due to slow moving nature of the system, resuming the typical trajectory has been more gradual than predicted.

The careful observer will notice the forecast charted below breaks from the pattern OPM’s forecasts have followed for several years. Instead of the typical mid year swell, the line follows a new path – one similar to the lines traced by the actual population in 2016 and 2017. OPM’s revised methodology places additional weight on the last two years to produce the 2018 forecast.

TABLE 1 – Prison Population Forecast

	Avg. Daily Count	OPM 2018 Forecast	Inmate difference
JAN '18	13,688	-	-
FEB	13,819	13,819	-
MAR	-	13,701	-
APR	-	13,607	-
MAY	-	13,550	-
JUN	-	13,465	-
JUL	-	13,433	-
AUG	-	13,320	-
SEP	-	13,265	-
OCT	-	13,259	-
NOV	-	13,230	-
DEC	-	13,103	-
JAN '19	-	12,901	-
FEB	-	13,093	-

Avg. Daily Count (ADC) for 1st week of month

Chart 1 – Actual prison population against the OPM forecasts

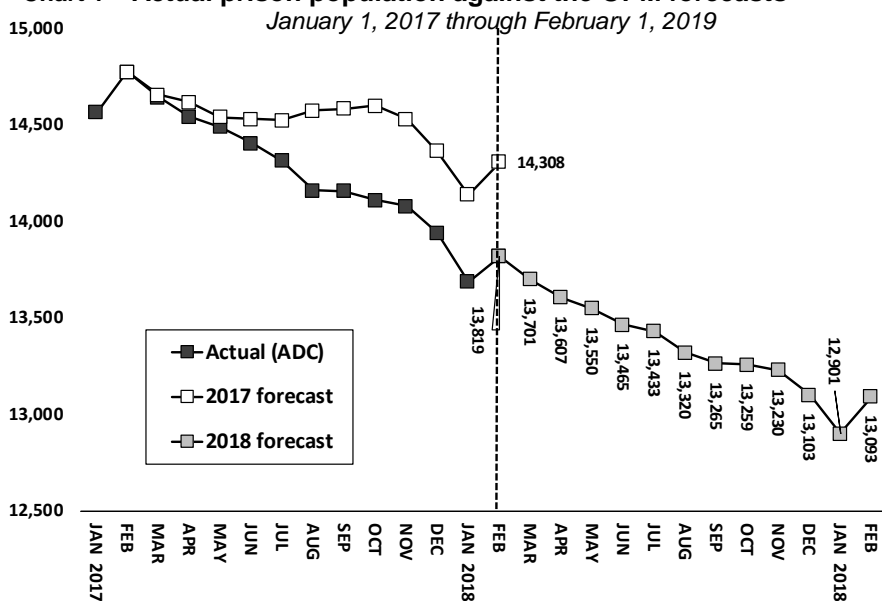


Chart 2 - Criminal justice, monthly counts and flows

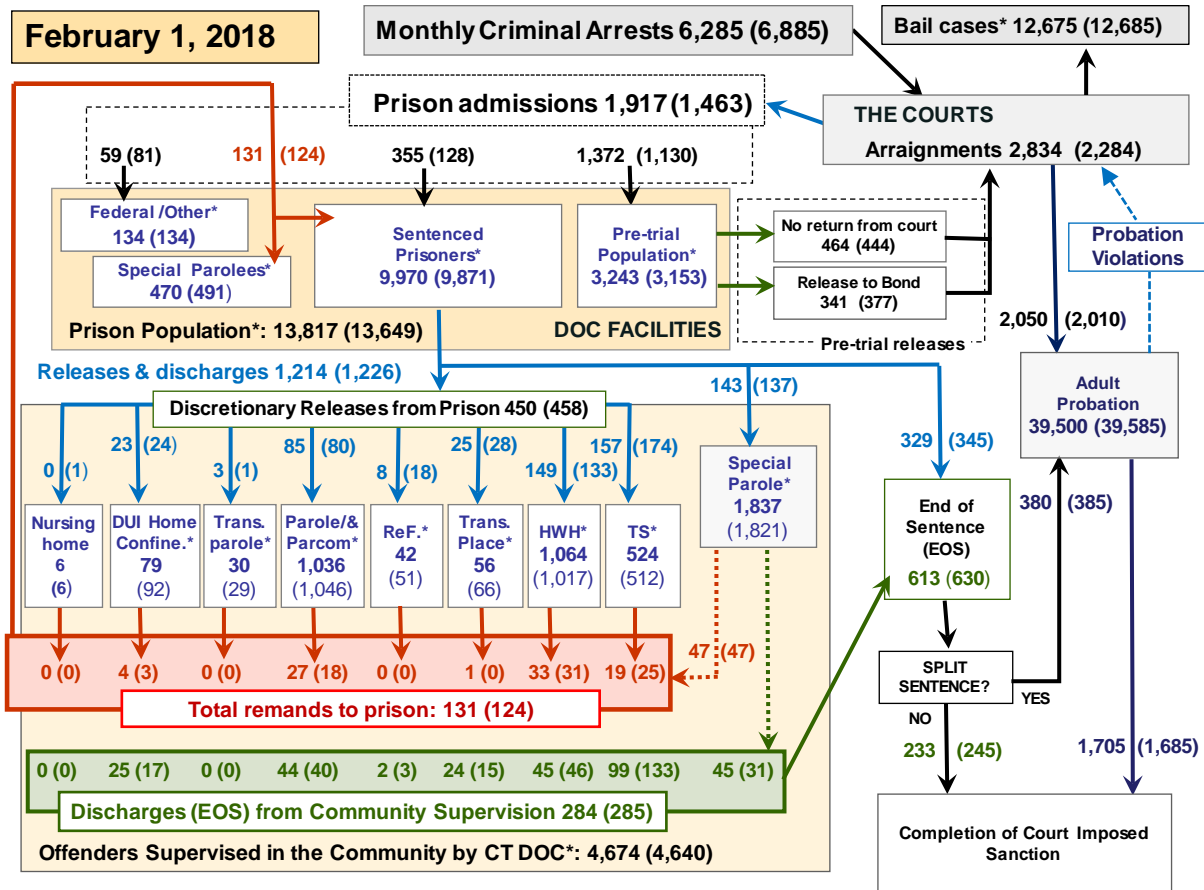
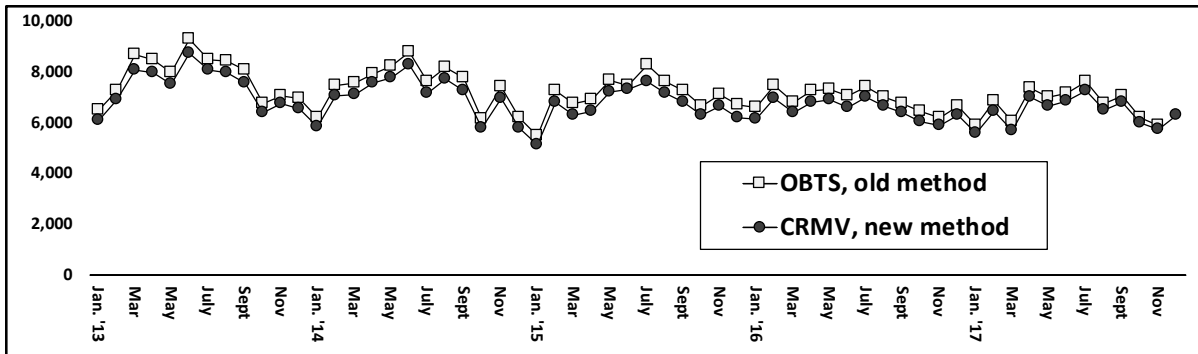


Chart 2 contains monthly operations data for January 2018 and daily counts reported on February 1, 2018. Asterisks (*) indicate the daily count on February 1st. Figures for last month are enclosed by parentheses. Sources: Arrests - OBTS, Court and probation data - CSSD, all other data - CT DOC. Note: Judicial Branch data this month is estimated.

Chart 2a – Arrests – new counting methodology



Due to a recent changeover at CJIS, arrest data in this paper will come from a new source. Previously, arrests were based on counts from OBTS - the Offender Based Tracking System. Going forward arrests will be tallied by the counting rules of CRMV.

Both OBTS and CRMV are fed by the same original data. CRMV - the new method - counts arrests one step further into the judicial process. For example, if Jane Doe is arrested by on Monday, then is served with a warrant for additional crimes on Wednesday, OBTS counts two arrests. Should the court

eventually place both arrests on one docket, CRMV counts one event. Based on this logic, CRMV is more offender centered than OBTS.

The chart above shows the monthly tallies for both counting rules since January 2013. The two lines nearly overlap and move in lockstep with one another. For the purpose of trend analysis there is virtually no difference.

To track comparisons over time, all arrest data, including historical data, will be based on the new counting method.

Table 2 - First-of-month totals

	2017		2018		2017		% Change	
	Dec. 1	Jan. 1	Feb. 1	Feb. 1	Monthly	Annual		
DOC Facilities								
Federal/Other	147	134	134	116	0.0%	15.5%		
Sentenced	10,114	9,871	9,970	10,955	1.0%	-9.0%		
Special Parole	484	491	470	474	-4.3%	-0.8%		
Pre-trial	3,196	3,153	3,243	3,245	2.9%	-0.1%		
Total	13,941	13,649	13,817	14,790	1.2%	-6.6%		
DOC Community								
Transfer Parole	27	29	30	9	-	-		
Parole/ Parcom Total	1,043	1,046	1,036	1,177	-1.0%	-12.0%		
Parole	887	891	876	997	-1.7%	-12.1%		
Parcom @ CT	156	155	160	180	3.2%	-11.1%		
Furlough	59	51	42	27	-17.6%	55.6%		
Trans Placement	57	66	56	68	-15.2%	-17.6%		
DUI/Home confine.	91	92	79	106	-14.1%	-25.5%		
Halfway House Total	1,005	1,017	1,064	939	4.6%	13.3%		
Comm Release	519	515	538	493	4.5%	9.1%		
TS	55	55	60	61	9.1%	-1.6%		
Parole	139	144	159	120	10.4%	32.5%		
Transfer Parole	2	1	1	0	-	-		
Special Parole	290	302	306	265	1.3%	15.5%		
TS	504	512	524	583	2.3%	-10.1%		
Nursing home	5	6	6	8	-	-		
Special Parole	1,794	1,821	1,837	1,644	0.9%	11.7%		
Total	4,585	4,640	4,674	4,561	0.7%	2.5%		

Table 2a - Admissions, releases & discharges

	2017		2018		2017		% Change	
	Nov.	Dec.	Jan.	Jan.	Monthly	Annual		
Admissions								
Federal/Other	88	81	59	88	-27.2%	-33.0%		
Remands	155	124	131	173	5.6%	-24.3%		
DUI	2	3	4	6	33.3%	-33.3%		
Parole	26	18	27	37	50.0%	-27.0%		
Trans Plac/Furlough	2	0	1	2	-	-		
HWH	27	31	33	30	6.5%	10.0%		
TS	35	25	19	30	-24.0%	-36.7%		
Special Parole	62	47	47	67	0.0%	-29.9%		
New Sentence	172	128	355	418	177.3%	-15.1%		
VOP	45	41	91	106	122.0%	-14.2%		
Pre-trial	1208	1130	1372	1424	21.4%	-3.7%		
Total	1,623	1,463	1,917	2,103	31.0%	-8.8%		
Releases and discharges								
Transfer Parole	2	1	3	4	200.0%	-		
Parole	85	80	85	102	6.3%	-16.7%		
Furlough	27	18	8	21	-55.6%	-61.9%		
Trans. Placement	25	28	25	22	-10.7%	13.6%		
Home Confinement DU	24	24	23	16	-4.2%	43.8%		
HWH	150	133	149	123	12.0%	21.1%		
TS	158	174	157	187	-9.8%	-16.0%		
Special Parole	124	137	143	126	4.4%	13.5%		
Nursing home	0	1	0	0	-	-		
End of Sentence	651	630	613	691	-2.7%	-11.3%		
Total	1,246	1,226	1,206	1,292	-1.6%	-6.7%		
Pre-trial Releases*								
From Court	463	444	464	506	4.5%	-8.3%		
Release to Bond	363	377	341	358	-9.5%	-4.7%		

* Totals reflect events, not individual offenders

DOC - Community Release Unit (CRU)

Table 3 - Case reviews and release metrics

	Cases				Approval Rate
	Reviewed	Approved	Denied	Continued	
November	735	364	109	91	50%
December	680	332	113	107	49%
Jan. '18	684	324	117	92	47%
Jan. '17	792	358	126	141	45%

Board of Pardons and Paroles

Table 4 - Parole hearings, new cases

	Parole Hearings	Paroles granted	Grant rate	Paroles granted, 2016	Paroles granted, 2015
Nov.	185	91	49%	97	96
Dec.	161	87	54%	95	122
Jan. '18	158	87	55%	77	81

Table 4a - Other BOPP actions

	Reparole from revocation	Reparole from rescission	Closed interest cases	Special parole cases	Transfer parole cases
Nov.	25	3	7	30	0
Dec.	28	3	16	35	4
Jan. 18	48	6	18	32	27
Jan. '17	52	4	30	22	5

The pre-trial population

Table 5 - Bond ranges for pre-trial detainees

Bond amount	Dec. 1, 2017	Jan. 1, 2018	Feb. 1, 2018	Feb. 1, 2017
Less than \$20K	528	580	507	574
\$20K to <\$50K	498	551	452	566
\$50K to <\$100K	703	700	680	737
\$100K or higher	1,580	1,441	1,678	1,437
Persons w/bonds	3,309	3,272	3,317	3,314
Over \$1M	172	147	187	145

Table 5a - Pre-trial, weeks since admission

Weeks since last DOC admit	Dec. 1, 2017	Jan. 1, 2018	Feb. 1, 2018	Feb. 1, 2017
< 1 week	405	327	423	475
1 to < 3 weeks	339	314	357	371
3 to < 10 weeks	808	1,103	956	1,001
10 to < 30 weeks	990	745	720	701
30 wks or more	828	868	864	767
Pre-trial prisoners	3,309	3,357	3,320	3,316

Table 5b - Pre-trial admits, new offenders

	Nov. 2017	Dec. 2017	Jan. 2018	Jan. 2017
Arraignments	2,513	2,284	2,834	2,886
Pre-trial Admits	1,208	1,130	1,372	1,424
New to DOC	307	304	368	382
% New	25%	27%	27%	27%

Court Support Services Division

Table 6 - The Jail Re-interview Program

	Pre-trial admissions	Offender interviews	Offenders released	Released last year
Nov.	1,208	1,003	367	432
Dec.	1,130	908	330	474
Jan. '18	1,917	955	301	449

Table 6a - Pre-trial bail and probation caseloads

	Pre-trial Bail Case Starts	Client Supv. Starts	Split Sentence Starts	Pre-trial bail cases
Nov.	2,080*	2,000*	375*	12,680*
Dec.	2,075*	2,010*	385*	12,685*
Jan. '18	2,090*	2,050*	380*	12,675*
Jan. '17	2,223	2,388	392	13,041

* CSSD estimates

Note: Figures published here are based on the operational data available at the time of publication. Data in subsequent issues may not agree.

Chart 3 – Prison population

First week of the month, avg. daily count (ADC)

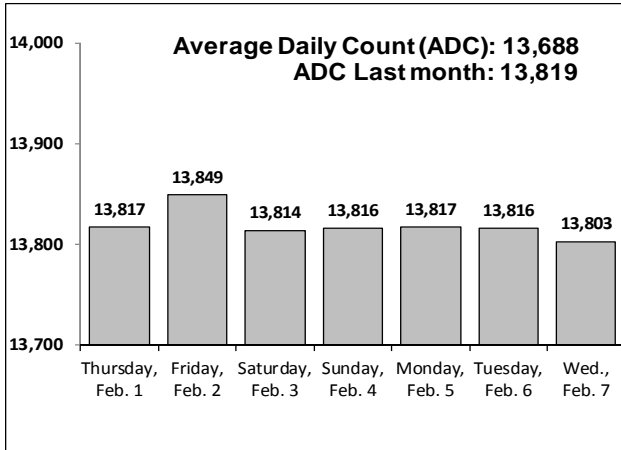


Chart 6 – Monthly DOC Admissions

Dec. 2016 through Jan. 2018

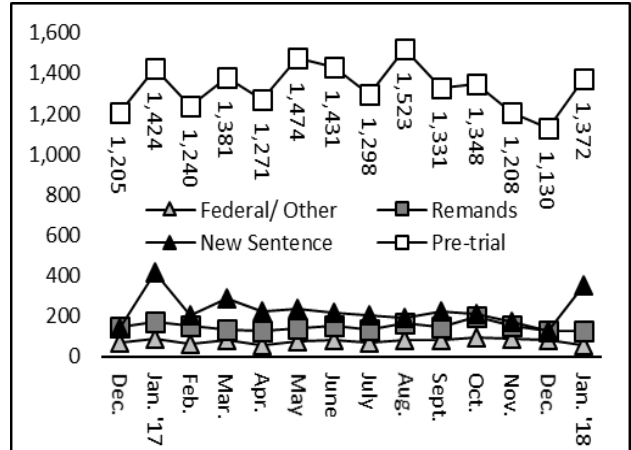


Chart 4 – Prison population, first-of-month

2015, 2016, 2017 and 2018

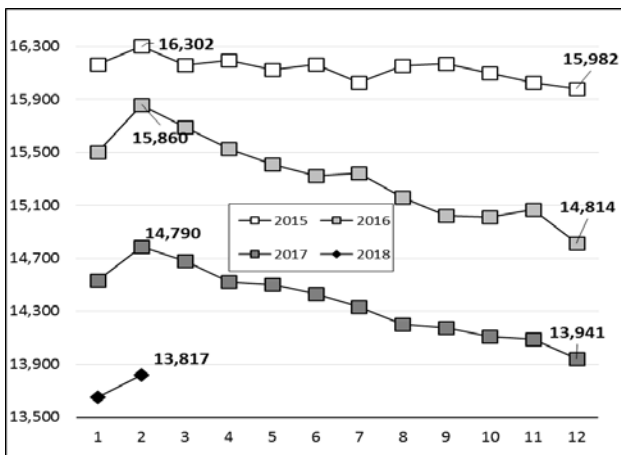


Chart 7 – Remands from community release

January 2018

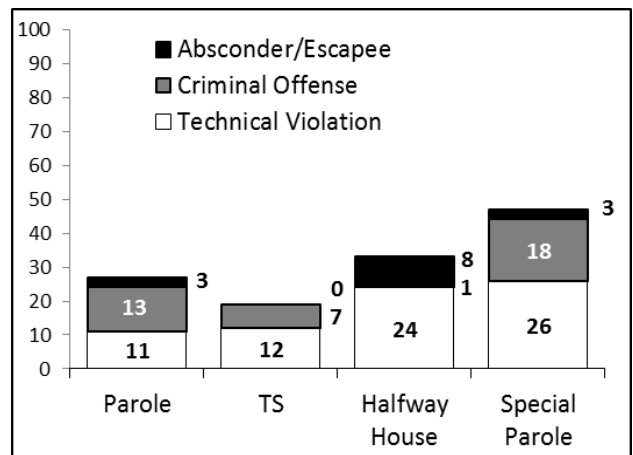


Chart 5 – Statewide criminal arrests

2017 and 2018

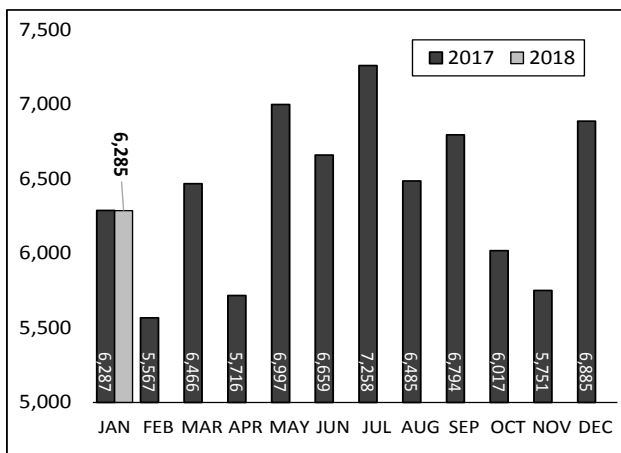
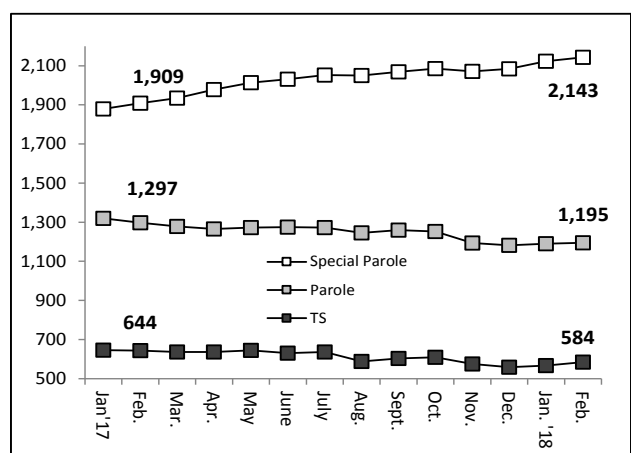


Chart 8 – DOC community supervision

January 1, 2017 through February 1, 2018



Note: Data for all charts, with the exception of Chart 5, was supplied by CT DOC. Data for Chart 5 are for new case starts in the state Offender-Based Tracking System (OBTs). Chart 8 includes offenders in halfway houses.