

OPM - Criminal Justice Policy & Planning Division

Monthly Indicators Report

Highlights

- On June 1, 2018 - 13,417 inmates were incarcerated in Connecticut's prisons and jails, exactly 400 fewer than February 1st and 1,012 less than June 1, 2017.
- On May 30th the CT DOC hosted Governor and First Lady Cathy Malloy's Reimagining Justice Conference. Uniquely, the gathering was held entirely within the confines of the Cheshire Correctional Institution. The conference brought together over 150 participants, including inmates, who were able to experience, first-hand, some of Connecticut's recent criminal justice reforms.
- Table 5a on page 3 shows that the recent growth in the pretrial population is being driven by offenders staying in that status for longer periods of time. The number held under 10 weeks is identical to the total last year (1810 to 1810), but those held longer are up 160.
- The volume of new admits to the prison system is in a state of steady decline. Since 2009 the total number of new admits has fallen by 35%, but the change has not been universal across age groups. For further discussion, see chart 2a.
- CSSD has begun reporting some data from its CMIS II conversion. Careful readers will notice that data representing probation client case starts and split sentence starts are no longer estimated. As the project moves forward, OPM expects to backfill estimated data with actual figures.

Prison Population Forecast

The prison population continues to track closely with OPM's February forecast. OPM predicted that the population would fall by 85 inmates between May and June, very close to the actual decline (94). This underscores the rationale behind an annual forecast. Accurately predicting not only the end of the year figure, but how each month ebbs and flows, is crucial to developing systemic knowledge.

As has been the case for several months now, the entirety of the drop in the population is due to the fall off in the sentenced population. One year ago the total prison population was 1,012 inmates higher. Over that time the sentenced population has fallen by 1,130. Meaning, it is no exaggeration to state that every last bit of the decline is a result of a falling sentenced population.

The ramifications of a rapidly shrinking sentenced population are many. Some can be easily seen, but others may be less apparent. Discretionary release decisions are undoubtedly becoming more difficult as the pool of eligible candidates shrinks and riskier offenders concentrate in the sentenced population. At some point in the not too distant future, it would be reasonable to assume that approval rates for discretionary release mechanisms would decline, thereby acting as a gentle brake on the subsiding population.

TABLE 1 – Prison Population Forecast

| | Avg. Daily Count | OPM 2018 Forecast | Inmate difference |
|---------|------------------|-------------------|-------------------|
| JAN '18 | 13,688 | - | - |
| FEB | 13,819 | 13,819 | - |
| MAR | 13,753 | 13,701 | -52 |
| APR | 13,652 | 13,607 | -45 |
| MAY | 13,499 | 13,550 | 51 |
| JUN | 13,405 | 13,465 | 60 |
| JUL | - | 13,433 | - |
| AUG | - | 13,320 | - |
| SEP | - | 13,265 | - |
| OCT | - | 13,259 | - |
| NOV | - | 13,230 | - |
| DEC | - | 13,103 | - |
| JAN '19 | - | 12,901 | - |
| FEB | - | 13,093 | - |

Avg. Daily Count (ADC) for 1st week of month

Chart 1 – Actual prison population against the OPM forecasts
January 1, 2017 through February 1, 2019

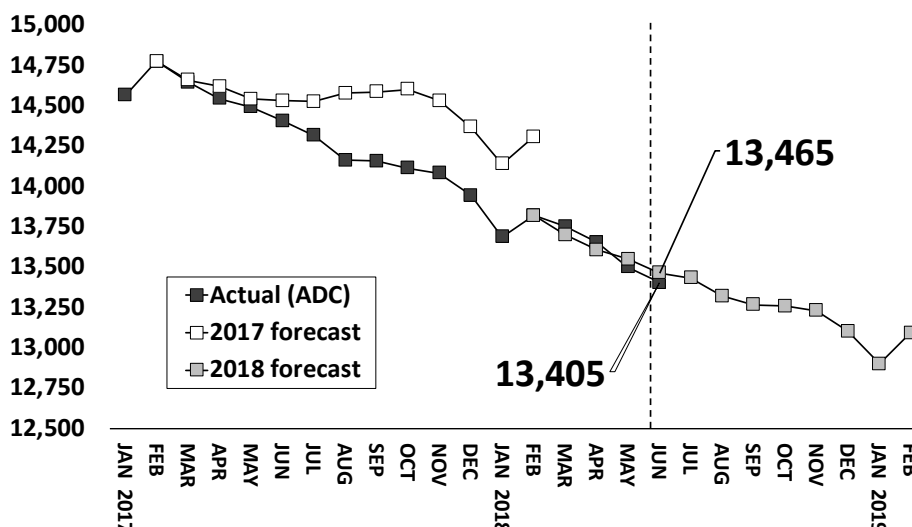


Chart 2 - Criminal justice, monthly counts and flows

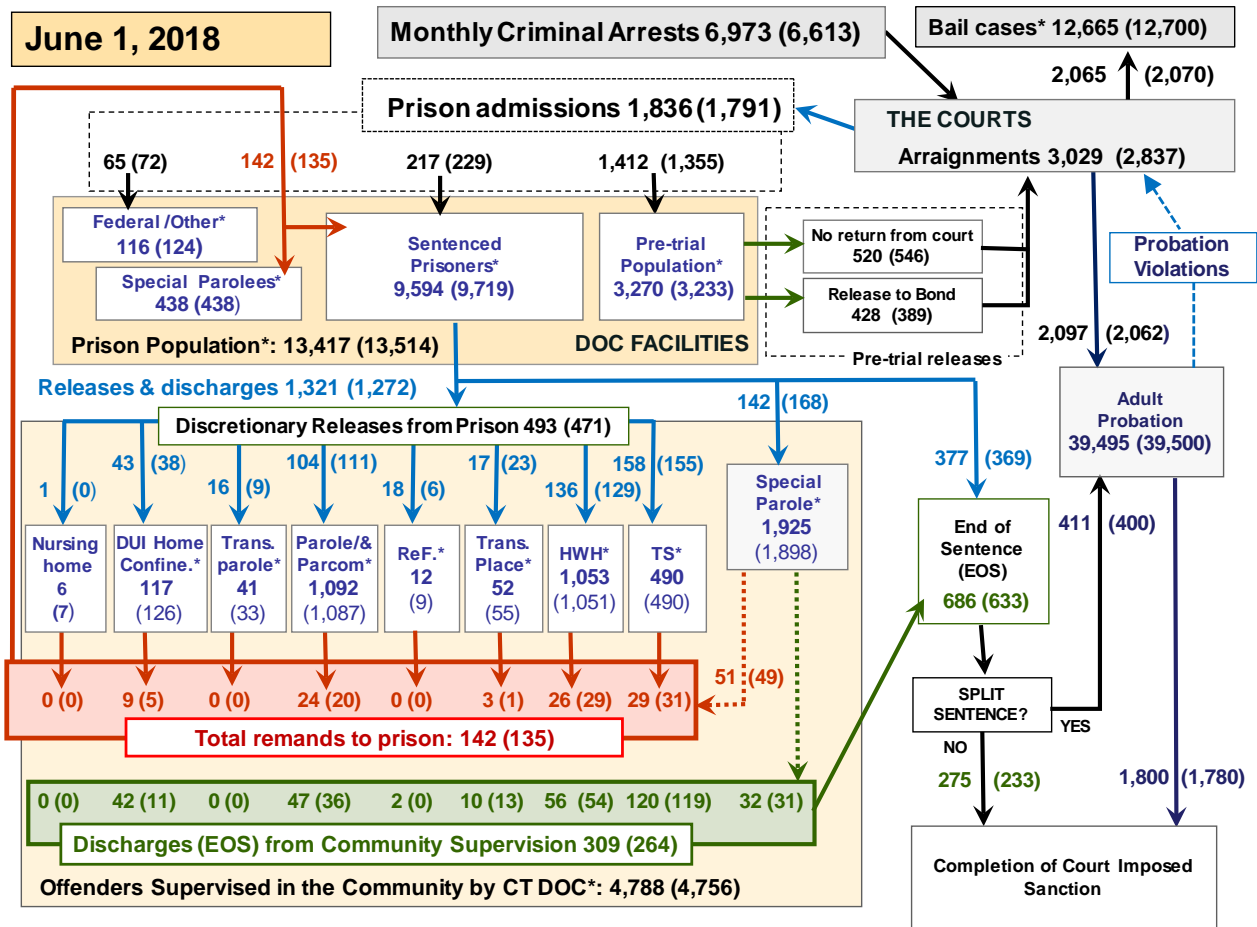
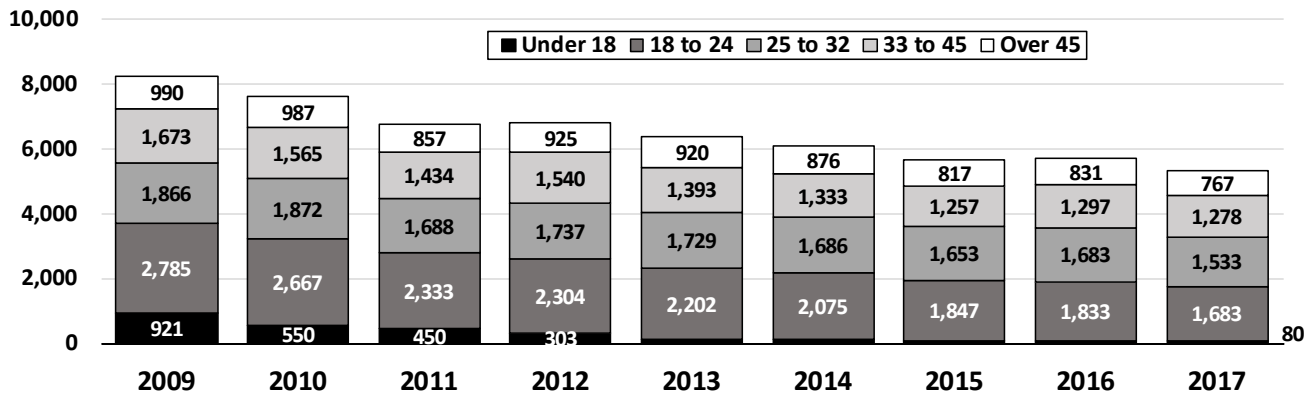


Chart 2 contains monthly operations data for May 2018 and daily counts reported on June 1, 2018. Asterisks (*) indicate the daily count on June 1st. Figures for last month are enclosed by parentheses. Sources: Arrests - OBTS, Court and probation data - CSSD, all other data - CT DOC. Note: Some Judicial Branch data this month is estimated.

Chart 2a – First time DOC admits, by age, 2009-2017



The state's prison population is down 33% since its historic peak in 2008. At the same time, the number of new admits to the DOC have been falling away as well, down 40%.

In terms of new admits, all age groups have seen a decline, but the reduction has disproportionately impacted young adults. The youngest group shown in the chart above collapses between 2008 and 2013, falling 90%, coinciding with the implementation of raise-the-age.

What is less apparent, but potentially more interesting is the subtle change in the 18-24 cohort in the years following. If raise the age merely delayed entry to prison, we would expect to see an increase in the 18 to 24 year olds admits after implementation. That's not what happened. Between 2013 and 2017 18 to 24 year olds admits fell by 24%, faster than all admits (16%) and twice as fast as older offenders. This suggests that the suppression of young, first time admits under the age of 18 has continued to the next age group.

Table 2 - First-of-month totals

| | 2018 | 2018 | 2018 | 2017 | % Change | |
|-----------------------|---------------|---------------|---------------|---------------|--------------|--------------|
| | Apr. 1 | May 1 | June 1 | June 1 | Monthly | Annual |
| DOC Facilities | | | | | | |
| Federal/Other | 123 | 124 | 116 | 142 | -6.5% | -18.3% |
| Sentenced | 9,818 | 9,719 | 9,594 | 10,724 | -1.3% | -10.5% |
| Special Parole | 460 | 438 | 438 | 452 | 0.0% | -3.1% |
| Pre-trial | 3,255 | 3,233 | 3,270 | 3,111 | 1.1% | 5.1% |
| Total | 13,656 | 13,514 | 13,418 | 14,429 | -0.7% | -7.0% |
| DOC Community | | | | | | |
| Transfer Parole | 28 | 33 | 41 | 14 | - | - |
| Parole/ Parcom Total | 1,071 | 1,087 | 1,092 | 1,139 | 0.5% | -4.1% |
| Parole | 904 | 919 | 932 | 976 | 1.4% | -4.5% |
| Parcom @ CT | 167 | 168 | 160 | 163 | -4.8% | -1.8% |
| Furlough | 11 | 9 | 12 | 44 | 33.3% | -72.7% |
| Trans Placement | 52 | 55 | 52 | 53 | -5.5% | -1.9% |
| DUI/Home confine. | 105 | 126 | 117 | 93 | -7.1% | 25.8% |
| Halfway House Total | 1,045 | 1,051 | 1,053 | 951 | 0.2% | 10.7% |
| Comm Release | 517 | 508 | 519 | 474 | 2.2% | 9.5% |
| TS | 42 | 45 | 46 | 51 | 2.2% | -9.8% |
| Parole | 154 | 161 | 147 | 136 | -8.7% | 8.1% |
| Transfer Parole | 2 | 1 | 3 | 0 | - | - |
| Special Parole | 330 | 336 | 334 | 289 | -0.6% | 15.6% |
| TS | 499 | 490 | 490 | 580 | 0.0% | -15.5% |
| Nursing home | 7 | 7 | 6 | 7 | - | - |
| Special Parole | 1,852 | 1,898 | 1,925 | 1,742 | 1.4% | 10.5% |
| Total | 4,670 | 4,756 | 4,788 | 4,623 | 0.7% | 3.6% |

Table 2a - Admissions, releases & discharges

| | 2017 | 2018 | 2018 | 2017 | % Change | |
|--------------------------------|--------------|--------------|--------------|--------------|-------------|--------------|
| | Mar. | April | May | May | Monthly | Annual |
| Admissions | | | | | | |
| Federal/Other | 65 | 72 | 65 | 78 | -9.7% | -16.7% |
| Remands | 148 | 135 | 142 | 142 | 5.2% | 0.0% |
| DUI | 5 | 5 | 9 | 9 | - | - |
| Parole | 28 | 20 | 24 | 16 | 20.0% | 50.0% |
| Trans Plac/Furlough | 2 | 1 | 3 | 0 | - | - |
| HWH | 33 | 29 | 26 | 31 | -10.3% | -16.1% |
| TS | 22 | 31 | 29 | 33 | -6.5% | -12.1% |
| Special Parole | 58 | 49 | 51 | 53 | 4.1% | -3.8% |
| New Sentence | 236 | 229 | 217 | 237 | -5.2% | -8.4% |
| VOP | 72 | 58 | 81 | 71 | 39.7% | 14.1% |
| Pre-trial | 1,284 | 1,355 | 1,412 | 1,474 | 4.2% | -4.2% |
| Total | 1,733 | 1,791 | 1,836 | 1,931 | 2.5% | -4.9% |
| Releases and discharges | | | | | | |
| Transfer Parole | 17 | 9 | 16 | 9 | - | - |
| Parole | 97 | 111 | 104 | 95 | -6.3% | 9.5% |
| Furlough | 10 | 6 | 18 | 24 | 200.0% | -25.0% |
| Trans. Placement | 25 | 23 | 17 | 24 | -26.1% | -29.2% |
| Home Confinement DU | 39 | 38 | 43 | 34 | 13.2% | 26.5% |
| HWH | 130 | 129 | 136 | 112 | 5.4% | 21.4% |
| TS | 159 | 155 | 158 | 186 | 1.9% | -15.1% |
| Special Parole | 137 | 168 | 142 | 118 | -15.5% | 20.3% |
| Nursing home | 0 | 0 | 1 | 1 | - | - |
| End of Sentence | 700 | 633 | 686 | 765 | 8.4% | -10.3% |
| Total | 1,314 | 1,272 | 1,321 | 1,368 | 3.9% | -3.4% |
| Pre-trial Releases* | | | | | | |
| From Court | 448 | 546 | 520 | 581 | -4.8% | -10.5% |
| Release to Bond | 389 | 389 | 428 | 409 | 10.0% | 4.6% |

* Totals reflect events, not individual offenders

DOC - Community Release Unit (CRU)

Table 3 - Case reviews and release metrics

| | Cases | | | | Approval |
|---------|----------|----------|--------|-----------|----------|
| | Reviewed | Approved | Denied | Continued | Rate |
| March | 713 | 344 | 101 | 107 | 48% |
| Apr. | 741 | 365 | 108 | 105 | 49% |
| May | 701 | 331 | 123 | 96 | 47% |
| May '17 | 806 | 376 | 95 | 113 | 47% |

Board of Pardons and Paroles

Table 4 - Parole hearings, new cases

| | Parole Hearings | Paroles granted | Grant rate | Paroles granted, 2016 | Paroles granted, 2015 |
|------|-----------------|-----------------|------------|-----------------------|-----------------------|
| Mar. | 166 | 91 | 55% | 95 | 93 |
| Apr. | 185 | 90 | 49% | 102 | 101 |
| May | 161 | 93 | 58% | 100 | 95 |

Table 4a - Other BOPP actions

| | Reparole from revocation | Reparole from rescission | Closed interest cases | Special parole cases | Transfer parole cases |
|---------|--------------------------|--------------------------|-----------------------|----------------------|-----------------------|
| Mar. | 43 | 4 | 26 | 34 | 11 |
| Apr. | 46 | 0 | 24 | 49 | 12 |
| May | 35 | 2 | 25 | 30 | 17 |
| May '17 | 44 | 2 | 20 | 40 | 13 |

The pre-trial population

Table 5 - Bond ranges for pre-trial detainees

| Bond amount | Apr. 1, 2018 | May 1, 2018 | June 1, 2018 | June 1, 2017 |
|-------------------|--------------|-------------|--------------|--------------|
| Less than \$20K | 468 | 473 | 485 | 548 |
| \$20K to < \$50K | 475 | 468 | 470 | 493 |
| \$50K to < \$100K | 705 | 702 | 694 | 734 |
| \$100K or higher | 1,699 | 1,692 | 1,705 | 1,407 |
| Persons w/bonds | 3,347 | 3,335 | 3,354 | 3,182 |
| Over \$1M | 192 | 195 | 201 | 144 |

Table 5a - Pre-trial, weeks since admission

| Weeks since last DOC admit | Apr. 1, 2018 | May 1, 2018 | June 1, 2018 | June 1, 2017 |
|----------------------------|--------------|-------------|--------------|--------------|
| < 1 week | 448 | 389 | 409 | 411 |
| 1 to < 3 weeks | 313 | 326 | 329 | 344 |
| 3 to < 10 weeks | 988 | 1,042 | 1,072 | 1,055 |
| 10 to < 30 weeks | 680 | 661 | 629 | 611 |
| 30 wks or more | 918 | 919 | 918 | 776 |
| Pre-trial prisoners | 3,347 | 3,337 | 3,357 | 3,197 |

Table 5b - Pre-trial admits, new offenders

| | Mar. 2018 | Apr. 2018 | May 2018 | May 2017 |
|------------------|-----------|-----------|----------|----------|
| Arraignments | 2,565 | 2,837 | 3,029 | 2,968 |
| Pre-trial Admits | 1,284 | 1,355 | 1,412 | 1,474 |
| New to DOC | 345 | 338 | 369 | 409 |
| % New | 27% | 25% | 26% | 28% |

Court Support Services Division

Table 6 - The Jail Re-interview Program

| | Pre-trial admissions | Offender interviews | Offenders released | Released last year |
|------|----------------------|---------------------|--------------------|--------------------|
| Mar. | 1,284 | 833 | 333 | 481 |
| Apr. | 1,355 | 937 | 335 | 417 |
| May | 1,412 | 985 | 331 | 515 |

Table 6a - Pre-trial bail and probation caseloads

| | Pre-trial Bail Case Starts | Client Supv. Starts | Split Sentence Starts | Pre-trial bail cases |
|---------|----------------------------|---------------------|-----------------------|----------------------|
| Mar. | 2,085* | 1,927 | 418 | 12,675* |
| Apr. | 2,070* | 2,062 | 368 | 12,670* |
| May | 2,065* | 2,097 | 411 | 12,665* |
| May '17 | 2,335 | 2,180 | 420 | 12,756 |

* CSSD estimates

Note: Figures published here are based on the operational data available at the time of publication. Data in subsequent issues may not agree.

Chart 3 – Prison population

First week of the month, avg. daily count (ADC)

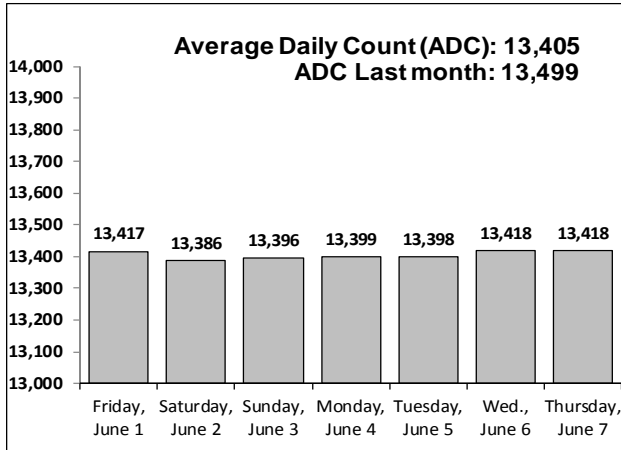


Chart 6 – Monthly DOC Admissions

Apr. 2017 through May. 2018

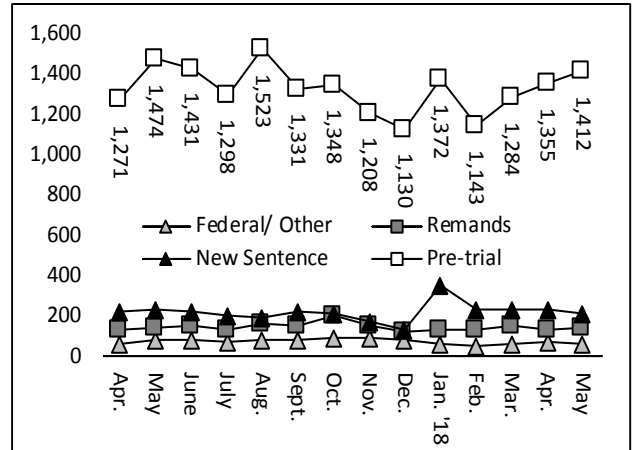


Chart 4 – Prison population, first-of-month

2015, 2016, 2017 and 2018

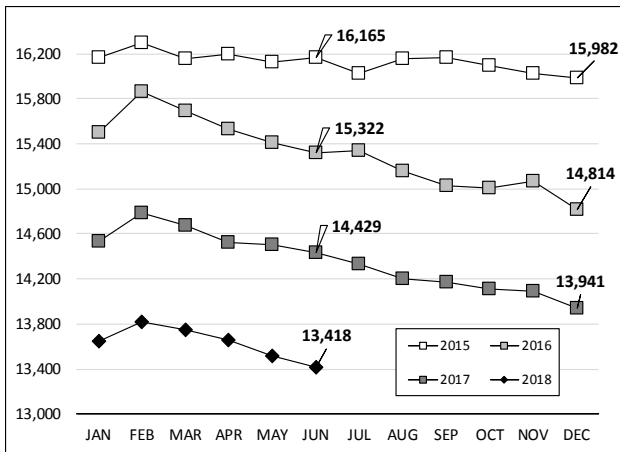


Chart 7– Remands from community release

May 2018

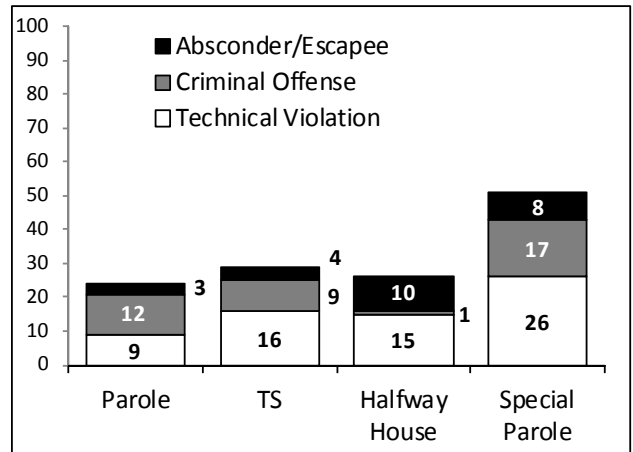


Chart 5 – Statewide criminal arrests

2017 and 2018

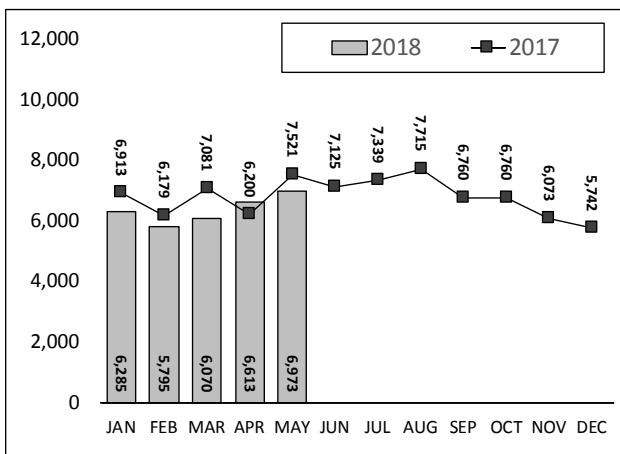
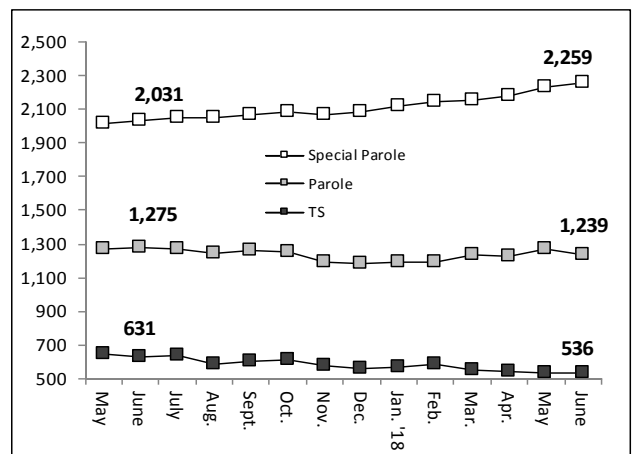


Chart 8 – DOC community supervision

April 1, 2017 through June 1, 2018



Note: Data for all charts, with the exception of Chart 5, was supplied by CT DOC. Data for Chart 5 are for new case starts in the state Criminal Motor Vehicle System (CRMVS). Chart 8 includes offenders in halfway houses.