

# OPM - Criminal Justice Policy & Planning Division

# Monthly Indicators Report

## Highlights

- On March 1, 2018 - 13,751 people were incarcerated in Connecticut's prisons and jails. Three years ago, on March 1, 2015, the population stood at 16,158 – 2,407 inmates higher.
- Careful readers might notice a small discontinuity in the jail re-interview figures published this month. This change is part of a larger transition. CSSD, which runs the JRI program, is migrating to a new data management system. This system should provide management and staff with a greater degree of specificity, as a result, the JRI count will be more granular. We are continuing to rely on CSSD for large volumes of data.
- The last prisoner left Enfield CI in January. Chart 2a is a graphic of the prison facilities that came online and where shuttered between 1993 and 2018.
- OPM recently released a 3-year recidivism analysis of sentenced offenders who were released or discharged in 2014. The study – available online – found that overall recidivism rates had declined moderately since 2011. Of the 11,254 offenders leaving prison in 2014, 54% were returned to prison within 3 years; 34% were returned to prison to begin a new term of incarceration.
- Correction:* Chart 5 in last month's issue, comparing the total number of arrests in January to the same month one year earlier, has been changed. The actual total was 6,913. OPM recently began reporting statewide arrests from a new data source. To ensure apples to apples comparisons, all arrest totals, current and historical, will come from the new data source.

## Prison Population Forecast

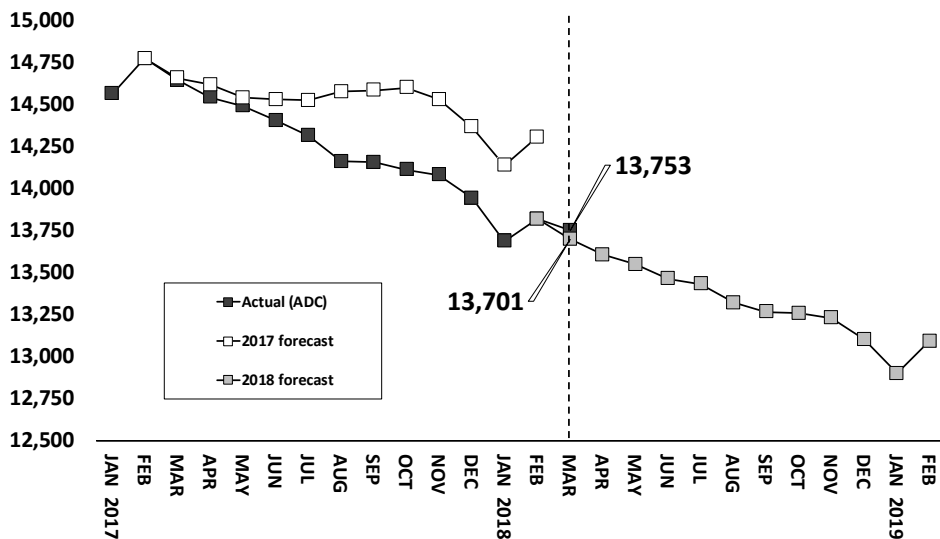
The actual prison population in March was slightly higher than OPM's forecast. This hasn't happened for at least two years and we caution readers that one data point is one important piece of information short of a trend. Inevitably, the 600- to 800- person annual drops in the prison population we have witnessed in recent years will have to end. The great mystery is whether that end will arrive softly or with a big bump.

As noted in the highlights, the prison population contracted by 2,407 inmates during the last three years. We estimate that 96% of that drop came from the sentenced prison population. In contrast, the combined pre-trial, remand and federal prison population in CT dropped by only 118 over the last three years.

If the CT DOC can not realize significant reductions the size of its pre-trial population, it will become increasingly difficult to sustain large drops in the overall prison population. OPM roughly estimates that of the 9,900 sentenced prisoners in the state today, over 25% will not be released until at least 2023. The pool of sentenced prisoners available to leave prison in the near term is also shrinking.

	Avg. Daily Count	OPM 2018 Forecast	Inmate difference
JAN '18	13,688	-	-
FEB	13,819	13,819	-
MAR	13,753	13,701	-52
APR	-	13,607	-
MAY	-	13,550	-
JUN	-	13,465	-
JUL	-	13,433	-
AUG	-	13,320	-
SEP	-	13,265	-
OCT	-	13,259	-
NOV	-	13,230	-
DEC	-	13,103	-
JAN '19	-	12,901	-
FEB	-	13,093	-

**Chart 1 – Actual prison population against the OPM forecasts**  
January 1, 2017 through February 1, 2019



## Chart 2 - Criminal justice, monthly counts and flows

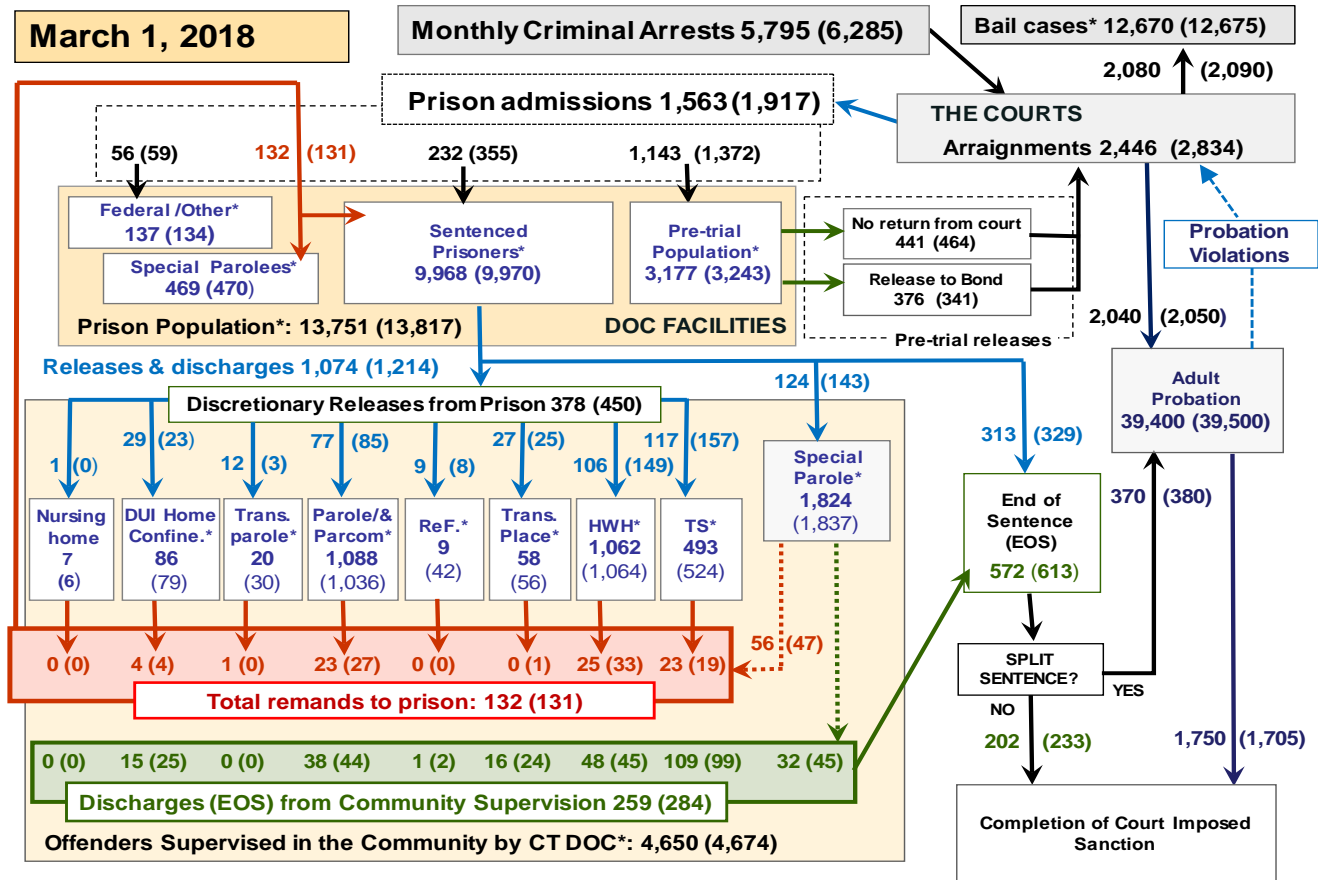
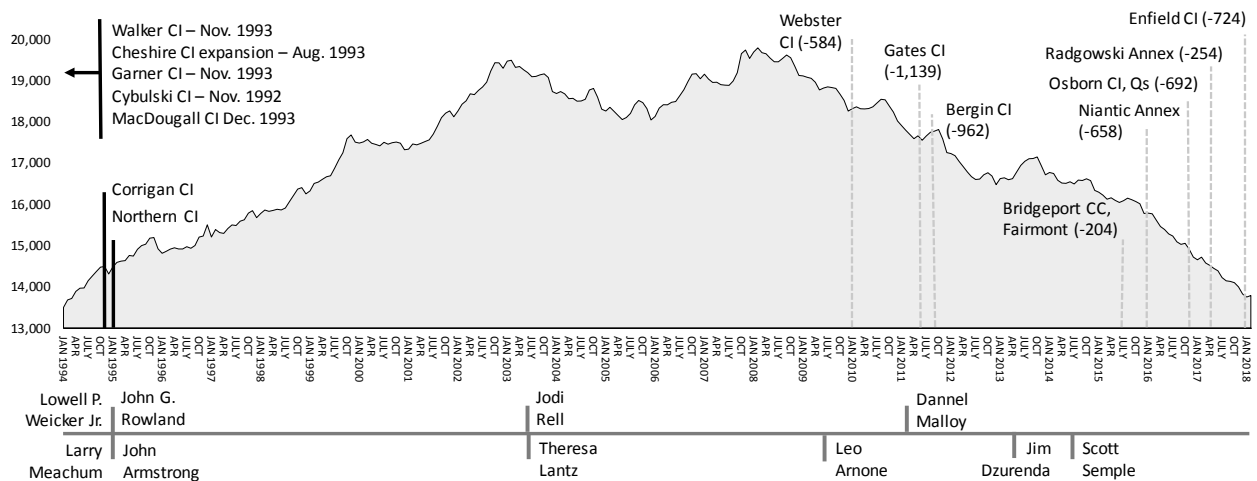


Chart 2 contains monthly operations data for February 2018 and daily counts reported on March 1, 2018. Asterisks (\*) indicate the daily count on March 1<sup>st</sup>. Figures for last month are enclosed by parentheses. Sources: Arrests - OBTS, Court and probation data - CSSD, all other data - CT DOC. Note: Judicial Branch data this month is estimated.

## Chart 2a – Prison population 1994 to the present



The last quarter century has seen enormous shifts in the prison population. As of March 2018 the prison population hovers around 13,750, a level not seen since early 1994.

The dynamics driving the criminal justice today are much different than those in the early 1990s. Burgeoning crime rates spawned a prison building boom in the 1990s.

Between 1992 and 1995 the state's capacity to incarcerate almost doubled. Six new facilities were added; others were expanded. As a consequence, the prison population rose rapidly, peaking in early 2008.

Since then, prison counts have plummeted and significant prison-bed capacity had been taken off-line, most recently Enfield CI was closed – formerly housing 724 inmates.

**Table 2 - First-of-month totals**

	2018	2018	2018	2017	% Change	
	Jan. 1	Feb. 1	Mar. 1	Mar. 1	Monthly	Annual
<b>DOC Facilities</b>						
Federal/Other	134	134	137	109	2.2%	25.7%
Sentenced	9,871	9,970	9,968	10,888	0.0%	-8.4%
Special Parole	491	470	469	486	-0.2%	-3.5%
Pre-trial	3,153	3,243	3,177	3,196	-2.0%	-0.6%
<b>Total</b>	<b>13,649</b>	<b>13,817</b>	<b>13,751</b>	<b>14,679</b>	<b>-0.5%</b>	<b>-6.3%</b>
<b>DOC Community</b>						
Transfer Parole	29	30	20	7	-	-
Parole/ Parcom Total	1,046	1,036	1,088	1,153	5.0%	-5.6%
Parole	891	876	927	977	5.8%	-5.1%
Parcom @ CT	155	160	161	176	0.6%	-8.5%
Furlough	51	42	9	25	-78.6%	-64.0%
Trans Placement	66	56	58	59	3.6%	-1.7%
DUI/Home confine.	92	79	86	94	8.9%	-8.5%
Halfway House Total	1,017	1,064	1,062	939	-0.2%	13.1%
Comm Release	515	538	527	486	-2.0%	8.4%
TS	55	60	54	50	-10.0%	8.0%
Parole	144	159	151	125	-5.0%	20.8%
Transfer Parole	1	1	1	0	-	-
Special Parole	302	306	329	278	7.5%	18.3%
TS	512	524	493	587	-5.9%	-16.0%
Nursing home	6	6	7	8	-	-
Special Parole	1,821	1,837	1,824	1,656	-0.7%	10.1%
<b>Total</b>	<b>4,640</b>	<b>4,674</b>	<b>4,650</b>	<b>4,528</b>	<b>-0.5%</b>	<b>2.7%</b>

**Table 2a - Admissions, releases & discharges**

	2017	2018	2018	2017	% Change	
	Dec.	Jan.	Feb.	Feb.	Monthly	Annual
<b>Admissions</b>						
Federal/Other	81	59	56	66	-5.1%	-15.2%
Remands	124	131	132	154	0.8%	-14.3%
DUI	3	4	5	1	-	-
Parole	18	27	23	31	-14.8%	-25.8%
Trans Plac/Furlough	0	1	0	1	-	-
HWH	31	33	25	32	-24.2%	-21.9%
TS	25	19	23	27	21.1%	-14.8%
Special Parole	47	47	56	62	19.1%	-9.7%
New Sentence	128	355	232	206	-34.6%	12.6%
VOP	41	91	76	67	-16.5%	13.4%
Pre-trial	1,130	1,372	1,143	1,240	-16.7%	-7.8%
<b>Total</b>	<b>1,463</b>	<b>1,917</b>	<b>1,563</b>	<b>1,666</b>	<b>-18.5%</b>	<b>-6.2%</b>
<b>Releases and discharges</b>						
Transfer Parole	1	3	12	3	-	-
Parole	80	85	77	94	-9.4%	-18.1%
Furlough	18	8	9	18	12.5%	-50.0%
Trans. Placement	28	25	27	21	8.0%	28.6%
Home Confinement DU	24	23	29	26	26.1%	11.5%
HWH	133	149	106	124	-28.9%	-14.5%
TS	174	157	117	162	-25.5%	-27.8%
Special Parole	137	143	124	119	-13.3%	4.2%
Nursing home	1	0	1	0	-	-
End of Sentence	630	613	572	680	-6.7%	-15.9%
<b>Total</b>	<b>1,226</b>	<b>1,206</b>	<b>1,074</b>	<b>1,247</b>	<b>-10.9%</b>	<b>-13.9%</b>
<b>Pre-trial Releases*</b>						
From Court	444	464	441	443	-5.0%	-0.5%
Release to Bond	377	341	376	392	10.3%	-4.1%

\* Totals reflect events, not individual offenders

**DOC - Community Release Unit (CRU)**

**Table 3 - Case reviews and release metrics**

	Cases				Approval
	Reviewed	Approved	Denied	Continued	Rate
December	680	332	113	107	49%
Jan. '18	684	324	117	92	47%
Feb.	634	304	114	78	48%
Feb. '17	768	380	105	122	49%

**Board of Pardons and Paroles**

**Table 4 - Parole hearings, new cases**

	Parole Hearings	Paroles granted	Grant rate	Paroles granted, 2016	Paroles granted, 2015
Dec.	161	87	54%	95	122
Jan. '18	158	87	55%	77	81
Feb.	139	77	55%	100	75

**Table 4a - Other BOPP actions**

	Reparole from revocation	Reparole from rescission	Closed interest cases	Special parole cases	Transfer parole cases
Dec.	28	3	16	35	4
Jan. 18	48	6	18	32	27
Feb.	41	3	13	24	11
Feb. '17	38	4	21	36	1

**The pre-trial population**

**Table 5 - Bond ranges for pre-trial detainees**

	Jan. 1, 2018	Feb. 1, 2018	Mar. 1, 2018	Mar. 1, 2017
Bond amount				
Less than \$20K	580	507	507	574
\$20K to < \$50K	551	452	467	555
\$50K to < \$100K	700	680	520	544
\$100K or higher	1,441	1,678	678	723
Persons w/bonds	3,272	3,317	3,322	3,252
Over \$1M	147	187	188	149

**Table 5a - Pre-trial, weeks since admission**

Weeks since last DOC admit	Jan. 1, 2018	Feb. 1, 2018	Mar. 1, 2017	Mar. 1, 2017
< 1 week	327	423	416	433
1 to < 3 weeks	314	357	274	308
3 to < 10 weeks	1,103	956	1,021	1,070
10 to < 30 weeks	745	720	742	678
30 wks or more	868	864	870	767
Pre-trial prisoners	3,357	3,320	3,323	3,256

**Table 5b - Pre-trial admits, new offenders**

	Dec. 2017	Jan. 2018	Feb. 2018	Feb. 2017
Arraignments	2,284	2,834	2,446	2,434
Pre-trial Admits	1,130	1,372	1,143	1,240
New to DOC	304	368	298	335
% New	27%	27%	26%	27%

**Court Support Services Division**

**Table 6 - The Jail Re-interview Program**

	Pre-trial admissions	Offender interviews	Offenders released	Released last year
Dec.	1,130	908	330	474
Jan. '18	1,917	955	301	449
Feb. '18	1,143	805	311	390

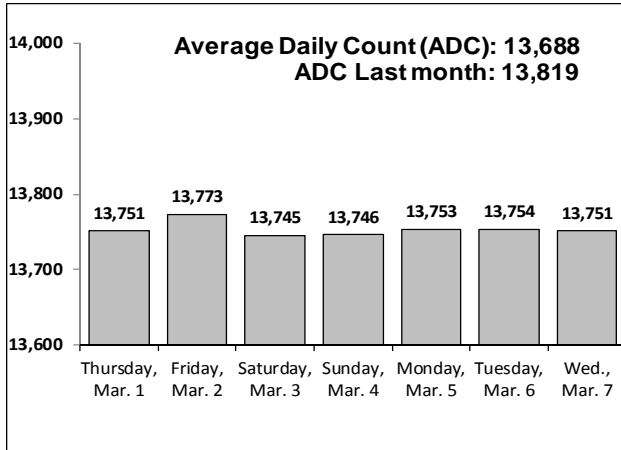
**Table 6a - Pre-trial bail and probation caseloads**

	Pre-trial Bail Case Starts	Client Supv. Starts	Split Sentence Starts	Pre-trial bail cases
Dec.	2,075*	2,010*	385*	12,685*
Jan. '18	2,090*	2,050*	380*	12,675*
Feb.	2,080*	2,040*	370*	12,670*
Feb. '17	1,902	1,757	358	12,750

Note: Figures published here are based on the operational data available at the time of publication. Data in subsequent issues may not agree.

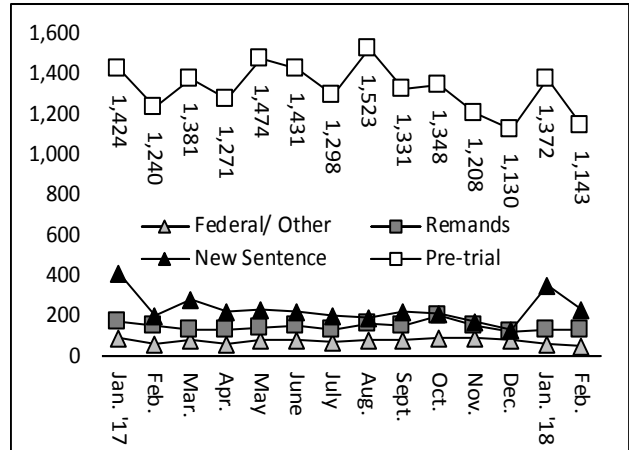
**Chart 3 – Prison population**

First week of the month, avg. daily count (ADC)



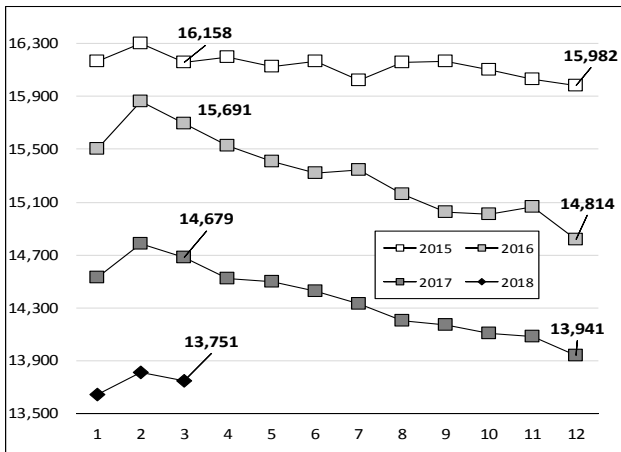
**Chart 6 – Monthly DOC Admissions**

Jan. 2017 through Feb. 2018



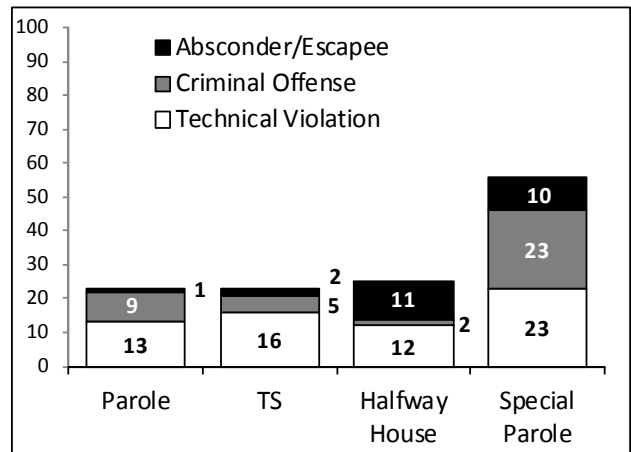
**Chart 4 – Prison population, first-of-month**

2015, 2016, 2017 and 2018



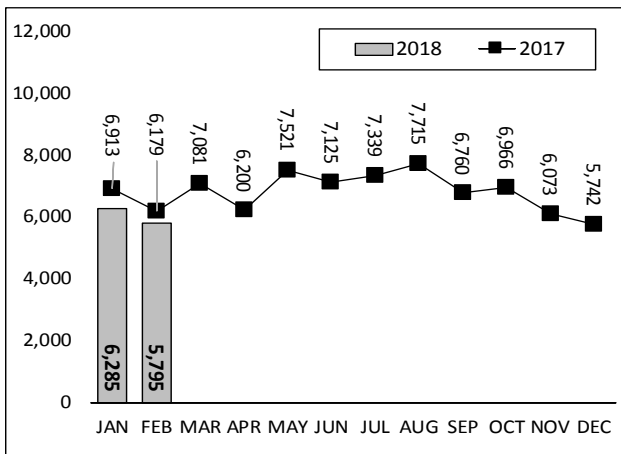
**Chart 7 – Remands from community release**

February 2018



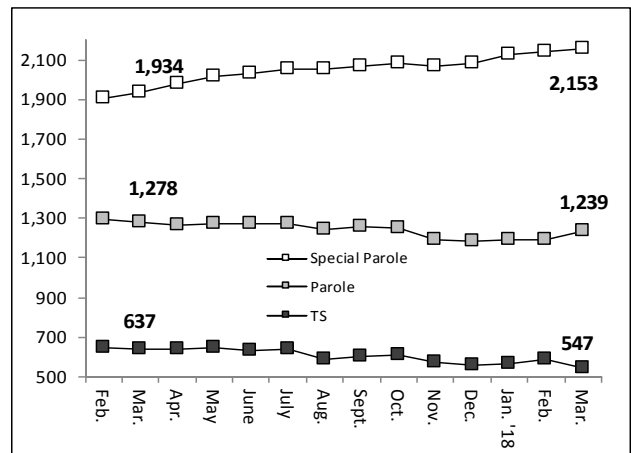
**Chart 5 – Statewide criminal arrests**

2017 and 2018



**Chart 8 – DOC community supervision**

February 1, 2017 through March 1, 2018



Note: Data for all charts, with the exception of Chart 5, was supplied by CT DOC. Data for Chart 5 are for new case starts in the state Offender-Based Tracking System (OBTS). Chart 8 includes offenders in halfway houses.