

# OPM - Criminal Justice Policy & Planning Division

# Monthly Indicators Report

## Highlights

- On January 1<sup>st</sup>, Connecticut's prisons and jails held 12,285 inmates, down 245 during the month of December. 2019 ended with 7% fewer inmates than when the year began, a reduction of over 900, January to January, see chart 4.
- There were 1,500 fewer admission events to the DOC in 2019 vs 2018, a reduction of just over 7%. The prison population has fallen in recent years by reducing the number of admissions, not by an increasing in the number of releases.
- Arrests, in large part, drive the inputs to the criminal justice system. Continuing a years long steady decline in statewide arrests 2019 saw a 5% decline compared to 2018. Compared to the most recent peak, 2009, arrests dropped 47%.
- Chart 2a offers a preview of the upcoming annual recidivism report. This year, OPM compares two cohorts and charts both the similarities as well as the differences between a cohort of prisoners released in 2015 and 2017. Chart 2a shows how remarkably similar the one-year return to prison rate is for both release cohorts – 32% in both cases.
- The sentenced population dipped below 9,000 inmates during the month of December, landing at 8,888 on January 1 (chart and table 2). Expect to see the count bounce up over 9,000 during the month of January as per usual in what has become known as the "January bump".

## Prison Population Forecast

As the calendar year turns over, the prison population typically bottoms out after several months of contraction. In that respect, 2019 was no different. Different, though, has been the magnitude of the drop seen over the last three months. In fact, the prison system has shed more than 600 inmates since early October, far outpacing the rate OPM predicted in the February forecast. The last three months have been historic, the fastest three-month contraction, in percentage terms, on record. Forecaster rely on historical data to make predictions so three straight months of record setting contractions wreak havoc with projections.

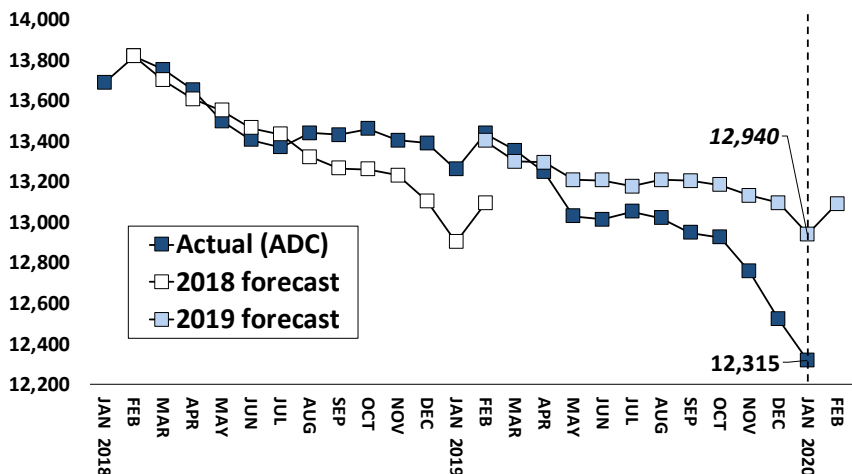
In a break from prior years, all major segments of the prison population are contributing to the overall decline. In years past, sentenced prisoners have accounted for the majority, if not all, of the contraction seen in the total population. Early in the year, reductions in the pretrial population drove the inmate headcount down, keeping it closely aligned with OPM's forecast. Once the number of sentenced inmates began falling as well, the count began shrinking much faster than anticipated. Not to be overlooked, the number of special parolees on remand status has also fallen, contributing roughly 10% of the overall reduction since January 2019.

**TABLE 1 – Prison Population Forecast**

	Avg. Daily Count	OPM 2019 Forecast	Inmate difference
JAN '19	13,259	-	-
FEB	13,436	13,400	-
MAR	13,352	13,298	-54
APR	13,247	13,293	46
MAY	13,029	13,208	179
JUN	13,013	13,205	192
JUL	13,052	13,177	125
AUG	13,020	13,207	187
SEP	12,947	13,204	257
OCT	12,924	13,183	259
NOV	12,756	13,131	375
DEC	12,520	13,094	574
JAN '20	12,315	12,940	625
FEB	-	13,090	-

*Avg. Daily Count (ADC) for 1st week of month*

**Chart 1 – Actual prison population against the OPM forecasts**  
January 1, 2018 through February 1, 2020



## Chart 2 - Criminal justice, monthly counts and flows

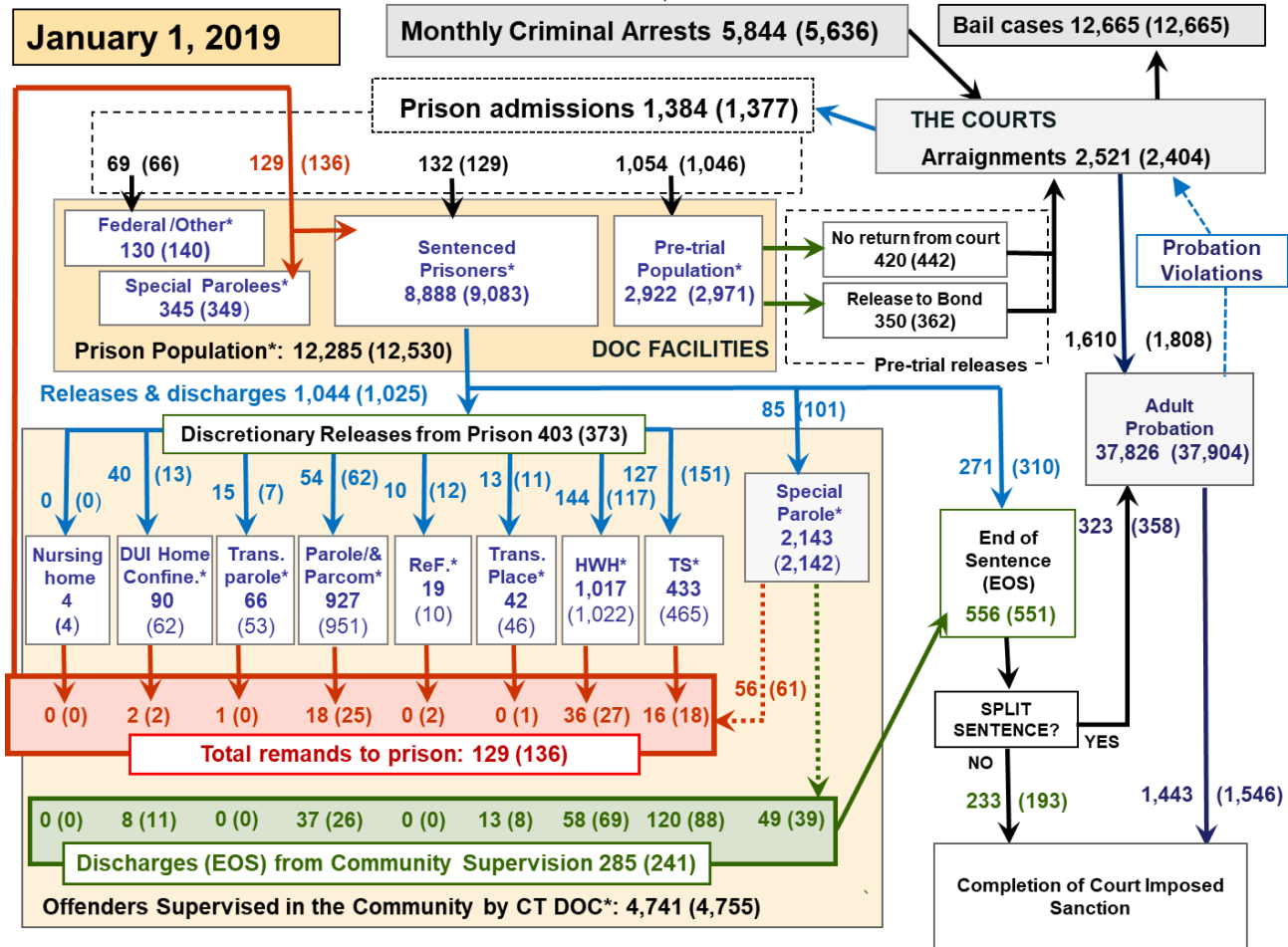
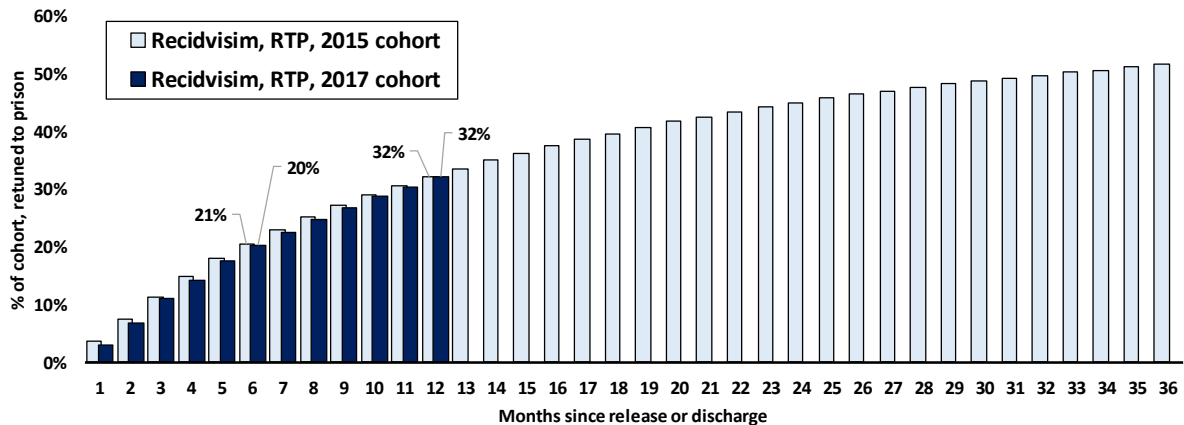


Chart 2 contains monthly operations data for December 2019 and daily counts reported on January 1, 2020. Asterisks (\*) indicate the daily count on January 1<sup>st</sup>. Figures for last month are enclosed by parentheses. Sources: Arrests – CRMVS, Court and probation data - CSSD, all other data - CT DOC.

## Chart 2a – Recidivism, RTP, 2015 & 2017 release cohorts



OPM's annual recidivism report typically tracks four measures of prisoner outcomes for three years from the time each prisoner is released. A three-year window is the industry standard. For the 2020 study, OPM has made a subtle change. In addition to reporting on the recidivism rate of the 2015 cohort, we plan to report, in yearly increments, return to prison rates of a more recent group, releases in 2017.

The chart above compares these two cohorts along one measure of recidivism, return-to-prison. The cohorts are similar in size, 2015 - 11,200 inmates and 2017 - 10,390. The one-year return to prison rates were remarkably similar for both cohorts. In both groups, at the one-year mark, 32% of those released had been returned to prison. OPM plans to roll out additional analysis throughout the year.

**Table 2 - First-of-month totals**

	2019	2019	2020	2019	% Change	
	Nov. 1	Dec. 1	Jan. 1	Jan. 1	Monthly	Annual
<b>DOC Facilities</b>						
Federal/Other	143	140	130	107	-7.1%	21.5%
Sentenced	9,241	9,083	8,888	9,270	-2.1%	-4.1%
Special Parole	349	336	345	450	2.7%	-23.3%
Pre-trial	3,060	2,971	2,922	3,401	-1.6%	-14.1%
<b>Total</b>	<b>12,793</b>	<b>12,530</b>	<b>12,285</b>	<b>13,228</b>	<b>-2.0%</b>	<b>-7.1%</b>
<b>DOC Community</b>						
Transfer Parole	49	53	66	37	24.5%	78.4%
Parole/ Parcom Total	946	951	927	1,014	-2.5%	-8.6%
Parole	790	792	772	844	-2.5%	-8.5%
Parcom @ CT	156	159	155	170	-2.5%	-8.8%
Furlough	3	10	19	17	-	-
Trans Placement	43	46	42	69	-8.7%	-39.1%
DUI/Home confine.	74	62	90	91	45.2%	-1.1%
Halfway House Total	1,060	1,022	1,017	1,040	-0.5%	-2.2%
Comm Release	527	509	528	509	3.7%	3.7%
TS	23	28	23	23	-17.9%	0.0%
Parole	140	130	134	162	3.1%	-17.3%
Transfer Parole	9	9	9	6	-	-
Special Parole	361	346	323	340	-6.6%	-5.0%
TS	435	465	433	431	-6.9%	0.5%
Nursing home	4	4	4	5	-	-
Special Parole	2,129	2,142	2,143	1,945	0.0%	10.2%
<b>Total</b>	<b>4,743</b>	<b>4,755</b>	<b>4,741</b>	<b>4,649</b>	<b>-0.3%</b>	<b>2.0%</b>

**Table 2a - Monthly admissions, releases & discharges**

	2019	2019	2019	2018	% Change	
	Oct.	Nov.	Dec.	Dec.	Monthly	Annual
<b>Admissions</b>						
Federal/Other	87	66	69	44	4.5%	56.8%
Remands	142	136	129	119	-5.1%	8.4%
DUI	7	2	3	2	-	-
Parole	23	25	18	17	-28.0%	5.9%
Trans Plac/Furlough	1	1	0	4	-	-
HWH	32	27	36	38	33.3%	-5.3%
TS	14	18	16	9	-11.1%	77.8%
Special Parole	65	61	56	49	-8.2%	14.3%
New Sentence	219	129	132	114	2.3%	15.8%
VOP	63	34	45	27	32.4%	66.7%
Pre-trial	1,224	1,046	1,054	1,210	0.8%	-12.9%
<b>Total</b>	<b>1,672</b>	<b>1,377</b>	<b>1,384</b>	<b>1,487</b>	<b>0.5%</b>	<b>-6.9%</b>
<b>Releases and discharges</b>						
Transfer Parole	10	7	15	3	-	-
Parole	73	62	54	81	-12.9%	-33.3%
Furlough	4	12	10	15	-	-
Trans. Placement	13	11	13	31	18.2%	-58.1%
Home Confinement DUI	22	13	40	16	207.7%	150.0%
HWH	125	117	144	156	23.1%	-7.7%
TS	142	151	127	138	-15.9%	-8.0%
Special Parole	124	101	85	106	-15.8%	-19.8%
Nursing home	0	0	0	0	-	-
End of Sentence	593	551	556	590	0.9%	-5.8%
<b>Total</b>	<b>1,106</b>	<b>1,025</b>	<b>1,044</b>	<b>1,136</b>	<b>1.9%</b>	<b>-8.1%</b>
<b>Pre-trial Releases*</b>						
From Court	527	442	420	448	-5.0%	-6.3%
Release to Bond	366	362	350	352	-3.3%	-0.6%

\* Totals reflect events, not individual offenders

**DOC - Community Release Unit (CRU)**

**Table 3 - Case reviews and release metrics**

	Cases				Approval
	Reviewed	Approved	Denied	Continued	Rate
Oct.	668	297	123	97	44%
Nov.	688	298	103	111	43%
Dec.	602	269	78	96	45%
Dec. '18	610	281	99	105	46%

Note: Figures published here are based on the operational data available at the time of publication. Data in subsequent issues may not agree.

**Board of Pardons and Paroles**

**Table 4 - Parole hearings, new cases**

	Parole Hearings	Paroles granted	Grant rate	Paroles granted, 2018	Paroles granted, 2017
Oct.	152	72	47%	52	109
Nov.	141	67	48%	74	91
Dec.	148	68	46%	74	87

**Table 4a - Other BOPP actions**

	Reparole from revocation	Reparole from rescission	Closed interest cases	Special parole cases	Transfer parole cases
Oct.	32	1	21	29	13
Nov.	33	1	18	21	9
Dec. '19	44	1	29	26	11
Dec. '18	36	0	14	35	6

**The pre-trial population**

**Table 5 - Bond ranges for pre-trial detainees**

Bond amount	Nov. 1, 2019	Dec. 1, 2019	Jan. 1, 2020	Jan. 1, 2019
Less than \$20K	459	451	421	558
\$20K to < \$50K	452	421	437	502
\$50K to <\$100K	519	530	534	661
\$100K or higher	1,712	1,707	1,678	1,817
Persons w/bonds	3,142	3,109	3,070	3,538
Over \$1M	199	208	204	189

**Table 5a - Pre-trial, weeks since admission**

Weeks since last DOC admit	Nov. 1, 2019	Dec. 1, 2019	Jan. 1, 2020	Jan. 1, 2019
< 1 week	335	353	277	336
1 to < 3 weeks	287	288	287	373
3 to < 10 weeks	716	667	688	825
10 to < 30 weeks	885	879	888	1,038
30 wks or more	923	923	945	971
Pre-trial prisoners	3,146	3,110	3,085	3,543

**Table 5b - Pre-trial admits, new offenders**

	Oct. 2019	Nov. 2019	Dec. 2019	Dec. 2018
Arraignments	2,818	2,404	2,521	2,474
Pre-trial Admits	1,224	1,046	1,054	1,210
New to DOC	275	263	277	266
% New	22%	25%	26%	22%

**Court Support Services Division**

**Table 6 - The Jail Re-interview Program**

	Pre-trial admissions	Offender interviews	Offenders released	Released last year
Oct.	1,224	967	342	342
Nov.	1,046	782	293	301
Dec.	1,054	733	260	303

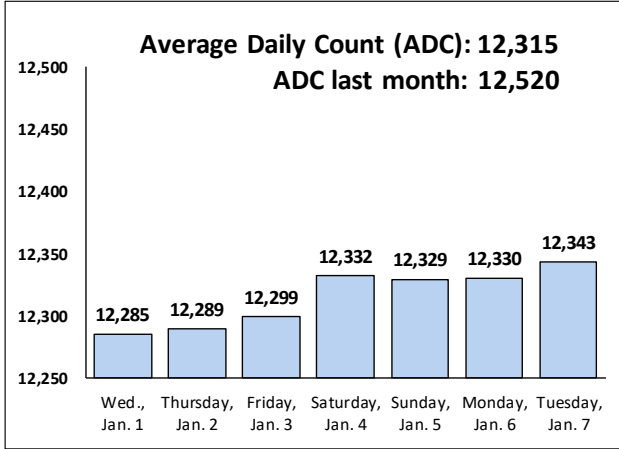
**Table 6a - Pre-trial bail and probation caseloads**

	Pre-trial Bail Case Starts	Client Supv. Starts	Split Sentence Starts	Pre-trial bail cases
Oct.	2,050*	1,781	340	12,665*
Nov.	2,050*	1,808	358	12,665*
Dec.	2,050*	1,610	323	12,665*
Dec.' 18	2,050*	1,718	365	12,665*

\* CSSD estimates

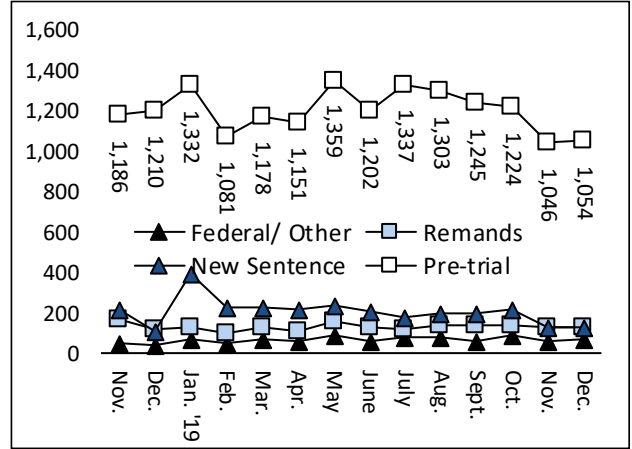
**Chart 3 – Prison population**

First week of the month, avg. daily count (ADC)



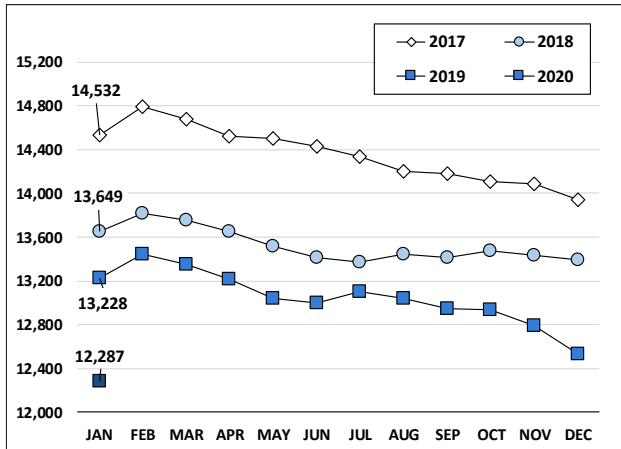
**Chart 6 – Monthly DOC Admissions**

November 2018 through December 2019



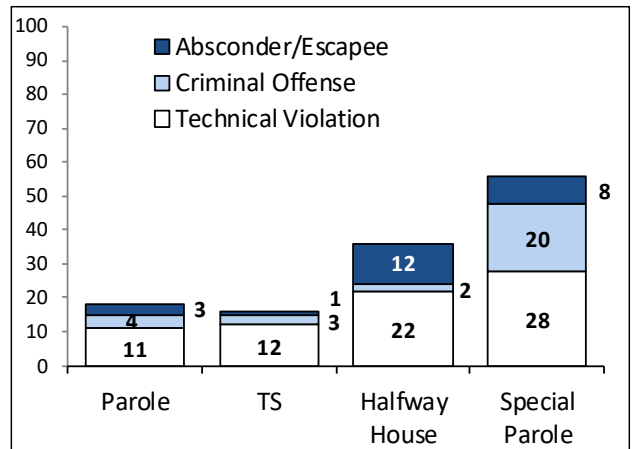
**Chart 4 – Prison population, first-of-month**

2017, 2018, 2019 and 2020



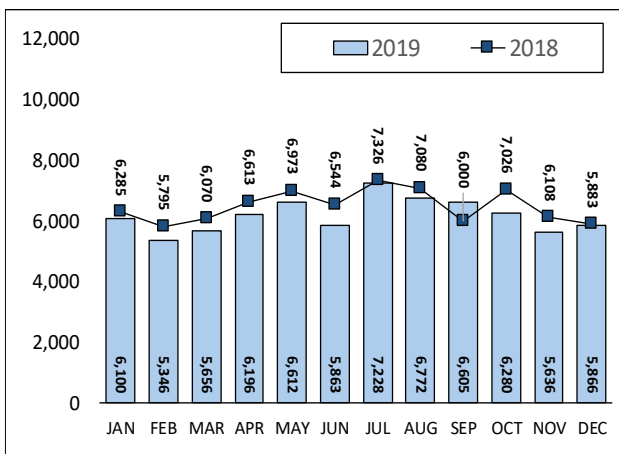
**Chart 7– Remands from community release**

December 2019



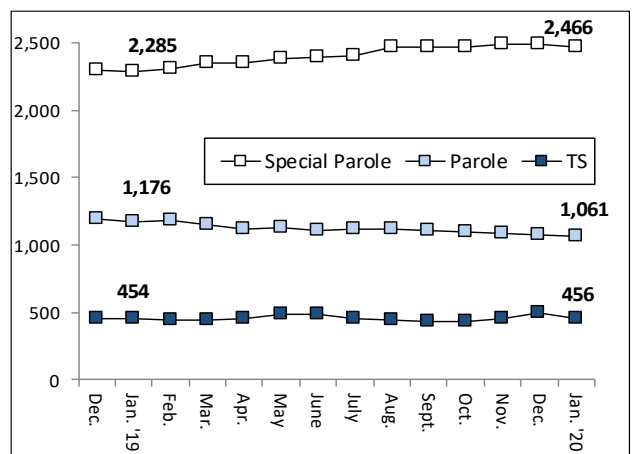
**Chart 5 – Statewide criminal arrests**

2018 and 2019



**Chart 8 – DOC community supervision**

Dec. 1, 2018 through Jan. 1, 2020



Note: Data for all charts, except for Chart 5, was supplied by CT DOC. Data for Chart 5 are for new case starts in the state Criminal Motor Vehicle System (CRMVS). Chart 8 includes offenders in halfway houses.