

OPM - Criminal Justice Policy & Planning Division

Monthly Indicators Report

Highlights

- On November 1st, Connecticut's prisons and jails held 12,793 inmates, down 143 from one month ago.
- Falling most of the year, the pretrial population is just above 3,000 inmates (chart 1). Going back as far as OPM has data, 2005, the pretrial population has never dipped below 3,000.
- Pretrial admissions are down 9.2% compared to October last year. Year-to-date, pretrial admits are down nearly 8%. This translates to 1,000 fewer pretrial admission events contributing to the reduction seen in the pretrial population over the past year.
- Chart 2a plots UCR arrest data focused on offenders aged 15-21. Over the 11 years of data, the chart shows a sizeable decrease between 2008 and 2015 across all age groups, then a leveling between 2015 and 2017. Data for 2018 was recently released by DESPP showing a drop across all age groups – a positive sign for the long term.
- Table 5a shows the number of pretrial inmates by the length of time since their last admit to prison. Compared to last year, all groups except those held the longest are down. Only pretrial inmates held longer than 30 weeks (roughly 7 months) are flat compared to last year.
- Table 2 includes a line item for the number of special parolees occupying DOC contracted halfway house beds. For the third consecutive month, that figure has fallen, drawing it nearly equal to what it was one year ago. At this time, it is not clear if this a pattern or an aberration.

Prison Population Forecast

The prison system experienced a net loss of 150 prisoners during the month of October. In percentage terms (-1.2%) this represents the largest October drop - since 1988. The prison population usually teeters on the brink in October, showing signs of impending late year drops, but 2019 was different. October 2019 behaved more like a typical December when the prison system typically shrinks by more than 1%.

A major component of OPM's forecast model is past performance. Typically the prison system moves with the agility of an ocean liner, large sudden shifts are rare if not entirely impossible. Months like we just witnessed create problems for forecasters. OPM predicted a rather modest decline in the prison population, but the contraction far out performed what was predicted, widening the already sizeable margin between the actual and predicted counts on Table 1 to the right.

Two factors working together are driving the prison population down. A sustained and marked reduction in admissions to prison exert downward pressure. This coupled with continued vigilance to reduce offenders' length of stay through diversion programs and discretionary release mechanisms the "back end" of the system continues to operate as efficiently as it did when the population was much higher.

TABLE 1 – Prison Population Forecast

	Avg. Daily Count	OPM 2019 Forecast	Inmate difference
JAN '19	13,259	-	-
FEB	13,436	13,400	-
MAR	13,352	13,298	-54
APR	13,247	13,293	46
MAY	13,029	13,208	179
JUN	13,013	13,205	192
JUL	13,052	13,177	125
AUG	13,020	13,207	187
SEP	12,947	13,204	257
OCT	12,924	13,183	259
NOV	12,756	13,131	375
DEC	-	13,094	-
JAN '20	-	12,940	-
FEB	-	13,090	-

Avg. Daily Count (ADC) for 1st week of month

Chart 1 – Actual prison population against the OPM forecasts
January 1, 2017 through February 1, 2019

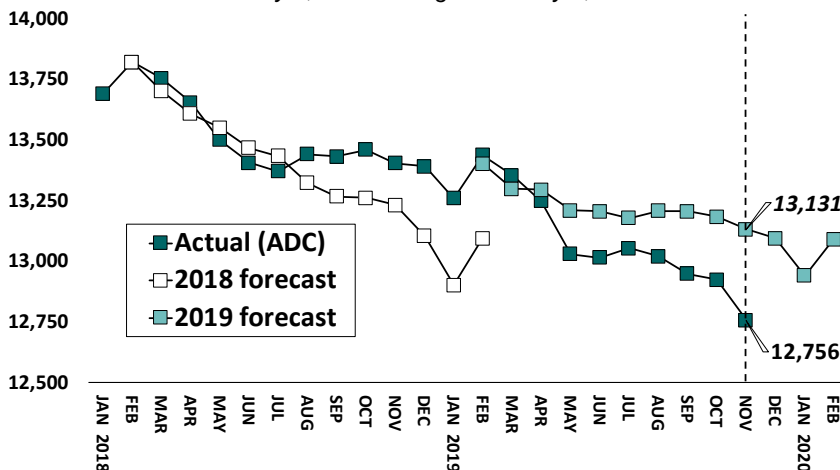


Chart 2 - Criminal justice, monthly counts and flows

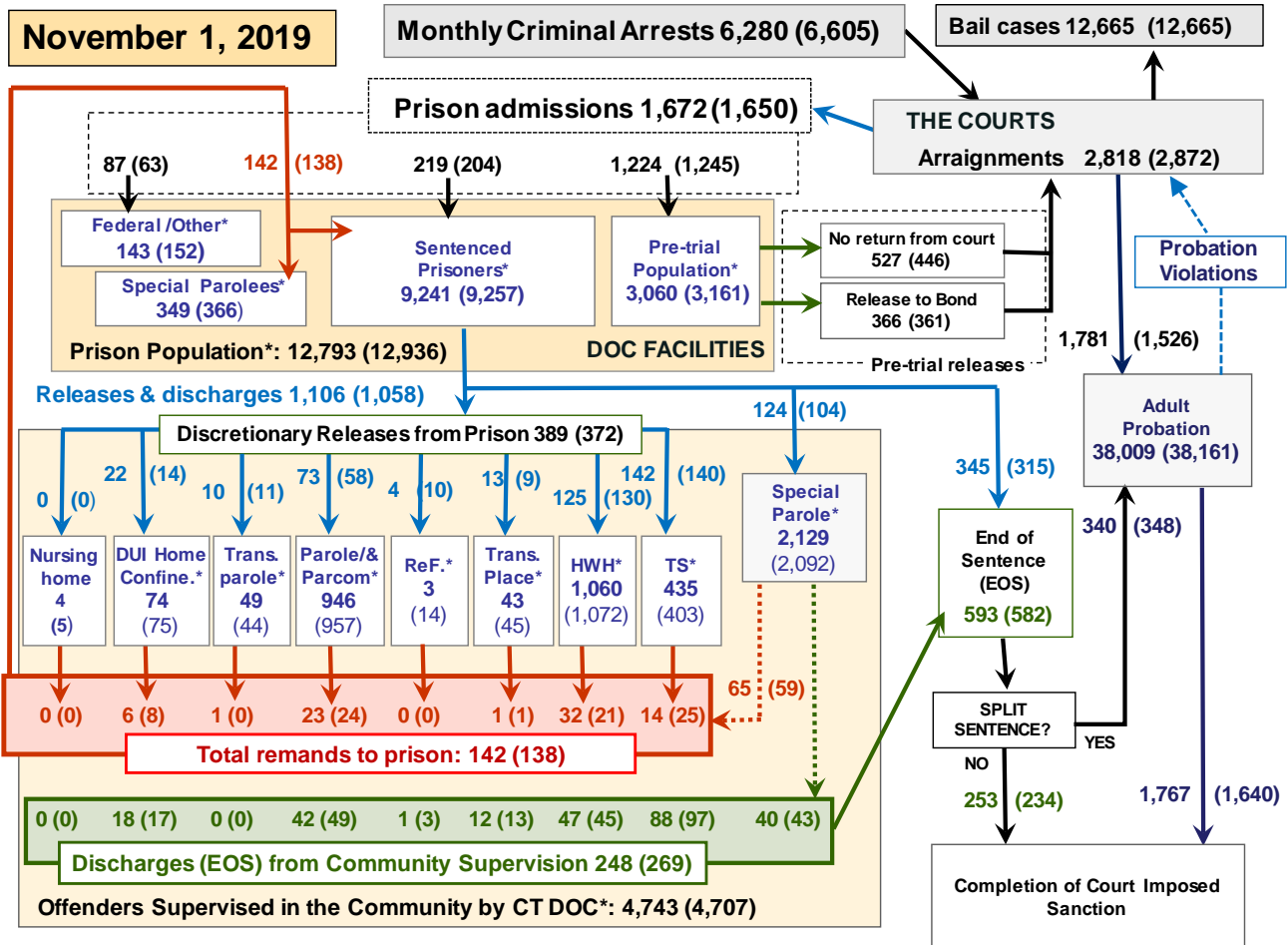
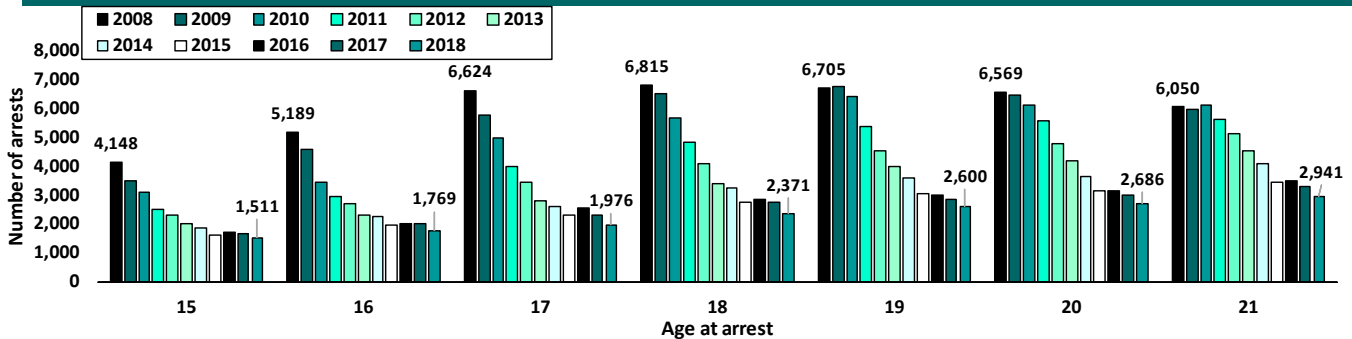


Chart 2 contains monthly operations data for October 2019 and daily counts reported on November 1, 2019. Asterisks (*) indicate the daily count on November 1st. Figures for last month are enclosed by parentheses. Sources: Arrests – CRMVS, Court and probation data - CSSD, all other data - CT DOC.

Chart 2a – Arrests by age group



Last month in this space we reported on violent crime rates – comparing Connecticut to other states. This month we take the next logical step, from a process perspective, to arrests, particularly among young offenders. The trends seen in young offenders be portend the long range future of the criminal justice system.

The chart above shows the number of arrests, over the last eleven years for offenders aged 15-21 in the state of Connecticut. Each cluster corresponds to the age indicated beneath it and each vertical bar represents the arrests for that year.

A large decrease between 2008 and 2015 is immediately evident. Following that drop (coinciding closely, although not perfectly, with Raise the Age legislation enacted in 2010 and 2012) the trend flattens out between 2015 and 2017, suggesting the downward trend had stopped, but 2018 saw as decreases across all age groups.

These trends bode well for the state's criminal justice system. As fewer young people are arrested today, fewer will end up in the prison system and even fewer still will return as age at first incarceration is a strong predictor of subsequent incarcerations.

Table 2 - First-of-month totals

	2019			2018	% Change	
	Sept. 1	Oct. 1	Nov. 1	Nov. 1	Monthly	Annual
DOC Facilities						
Federal/Other	155	152	143	117	-5.9%	22.2%
Sentenced	9,299	9,257	9,241	9,510	-0.2%	-2.8%
Special Parole	382	366	349	432	-4.6%	-19.2%
Pre-trial	3,106	3,161	3,060	3,375	-3.2%	-9.3%
Total	12,942	12,936	12,793	13,434	-1.1%	-4.8%
DOC Community						
Transfer Parole	40	44	49	42	11.4%	16.7%
Parole/ Parcom Total	968	957	946	1,064	-1.1%	-11.1%
Parole	806	800	790	889	-1.3%	-11.1%
Parcom @ CT	162	157	156	175	-0.6%	-10.9%
Furlough	24	14	3	7	-	-
Trans Placement	50	45	43	69	-4.4%	-37.7%
DUI/Home confine.	92	75	74	96	-1.3%	-22.9%
Halfway House Total	1,075	1,072	1,060	1,032	-1.1%	2.7%
Comm Release	497	520	527	495	1.3%	6.5%
TS	27	26	23	18	-11.5%	27.8%
Parole	145	143	140	151	-2.1%	-7.3%
Transfer Parole	6	10	9	5	-	-
Special Parole	400	373	361	363	-3.2%	-0.6%
TS	410	403	435	423	7.9%	2.8%
Nursing home	6	5	4	5	-	-
Special Parole	2,070	2,092	2,129	1,906	1.8%	11.7%
Total	4,735	4,707	4,743	4,644	0.8%	2.1%

Table 2a - Monthly admissions, releases & discharges

	2019			2018	% Change	
	August	Sept.	Oct.	Oct.	Monthly	Annual
Admissions						
Federal/Other	77	63	87	68	38.1%	27.9%
Remands	138	138	142	165	2.9%	-13.9%
DUI	4	8	7	7	-	-
Parole	26	24	23	30	-4.2%	-23.3%
Trans Plac/Furlough	4	1	1	2	-	-
HWH	23	21	32	34	52.4%	-5.9%
TS	16	25	14	24	-44.0%	-41.7%
Special Parole	65	59	65	68	10.2%	-4.4%
New Sentence	201	204	219	226	7.4%	-3.1%
VOP	69	54	63	70	16.7%	-10.0%
Pre-trial	1,303	1,245	1,224	1,348	-1.7%	-9.2%
Total	1,719	1,650	1,672	1,807	1.3%	-7.5%
Releases and discharges						
Transfer Parole	10	11	10	15	-	-
Parole	67	58	73	89	25.9%	-18.0%
Furlough	8	10	4	4	-	-
Trans. Placement	10	9	13	19	44.4%	-31.6%
Home Confinement DUI	25	14	22	27	57.1%	-18.5%
HWH	153	130	125	124	-3.8%	0.8%
TS	148	140	142	146	1.4%	-2.7%
Special Parole	102	104	124	138	19.2%	-10.1%
Nursing home	0	0	0	0	-	-
End of Sentence	609	582	593	621	1.9%	-4.5%
Total	1,132	1,058	1,106	1,183	4.5%	-6.5%
Pre-trial Releases*						
From Court	546	446	527	506	18.2%	4.2%
Release to Bond	367	361	366	394	1.4%	-7.1%

* Totals reflect events, not individual offenders

DOC - Community Release Unit (CRU)

Table 3 - Case reviews and release metrics

	Cases				Approval Rate
	Reviewed	Approved	Denied	Continued	
Aug.	767	338	140	128	44%
Sept.	617	270	109	99	44%
Oct.	668	297	123	97	44%
Oct. '18	762	356	121	108	47%

Note: Figures published here are based on the operational data available at the time of publication. Data in subsequent issues may not agree.

Board of Pardons and Paroles

Table 4 - Parole hearings, new cases

	Parole Hearings	Paroles granted	Grant rate	Paroles granted, 2018	Paroles granted, 2017
Aug	137	68	50%	73	70
Sept.	140	66	47%	82	80
Oct.	152	72	47%	52	109

Table 4a - Other BOPP actions

	Reparole from revocation	Reparole from rescission	Closed interest cases	Special parole cases	Transfer parole cases
Aug	29	2	14	21	6
Sept.	51	1	11	21	17
Oct.	32	1	21	29	13
Oct. '18	56	2	22	40	1

The pre-trial population

Table 5 - Bond ranges for pre-trial detainees

Bond amount	Sept. 1, 2019	Oct. 1, 2019	Nov. 1, 2019	Nov. 1, 2018
Less than \$20K	507	515	459	563
\$20K to <\$50K	456	455	452	489
\$50K to <\$100K	545	526	519	641
\$100K or higher	1,751	1,731	1,712	1,778
Persons w/bonds	3,259	3,227	3,142	3,471
Over \$1M	194	202	199	191

Table 5a - Pre-trial, weeks since admission

Weeks since last DOC admit	Sept. 1, 2019	Oct. 1, 2019	Nov. 1, 2019	Nov. 1, 2018
< 1 week	411	360	335	384
1 to < 3 weeks	308	311	287	334
3 to < 10 weeks	770	754	716	802
10 to < 30 weeks	877	879	885	1,030
30 wks or more	893	928	923	927
Pre-trial prisoners	3,259	3,232	3,146	3,477

Table 5b - Pre-trial admits, new offenders

	Aug 2019	Sept. 2019	Oct. 2019	Oct. 2018
Arraignments	2,982	2,872	2,818	3,006
Pre-trial Admits	1,303	1,245	1,224	1,348
New to DOC	311	308	275	325
% New	24%	25%	22%	24%

Court Support Services Division

Table 6 - The Jail Re-interview Program

	Pre-trial admissions	Offender interviews	Offenders released	Released last year
Aug.	1,303	1,046	363	383
Sept.	1,245	870	288	314
Oct.	1,224	967	342	342

Table 6a - Pre-trial bail and probation caseloads

	Pre-trial Bail Case Starts	Client Supv. Starts	Split Sentence Starts	Pre-trial bail cases
Aug.	2,050*	1,841	355	12,665*
Sept.	2,050*	1,526	348	12,665*
Oct.	2,050*	1,781	340	12,665*
Oct. '18	2,050*	2,172	372	12,665*

* CSSD estimates

Chart 3 – Prison population
 First week of the month, avg. daily count (ADC)

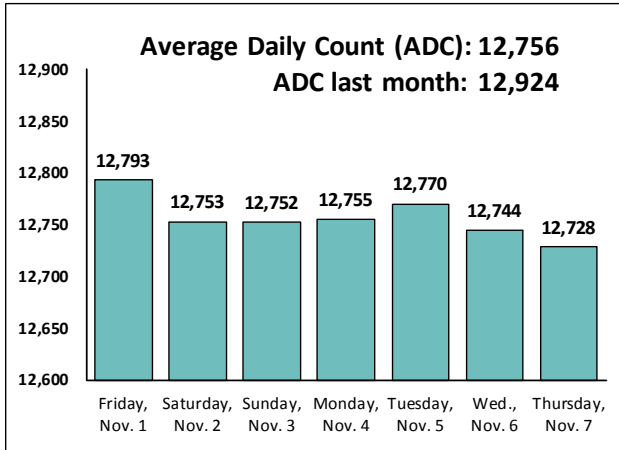


Chart 6 – Monthly DOC Admissions
 September 2018 through October 2019

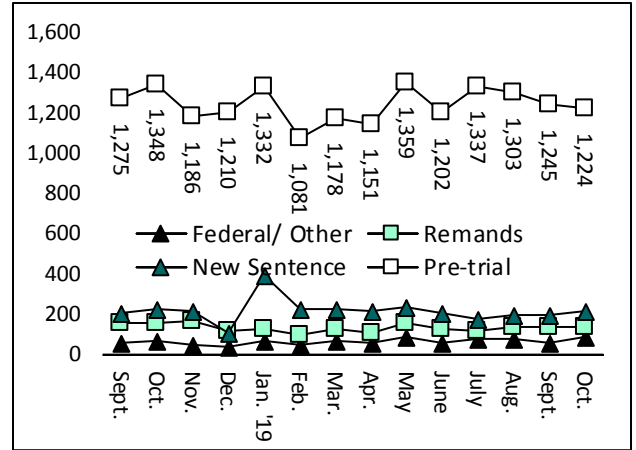


Chart 4 – Prison population, first-of-month
 2016, 2017, 2018 and 2019

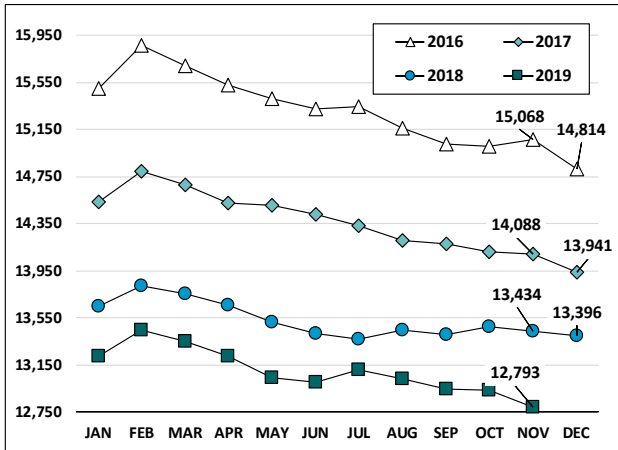


Chart 7 – Remands from community release
 October 2019

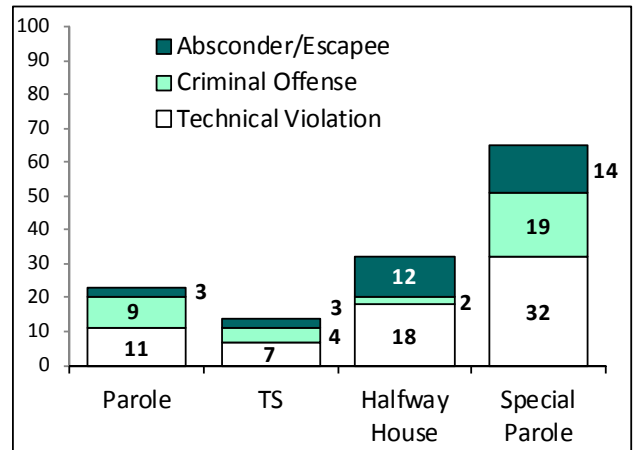


Chart 5 – Statewide criminal arrests
 2018 and 2019

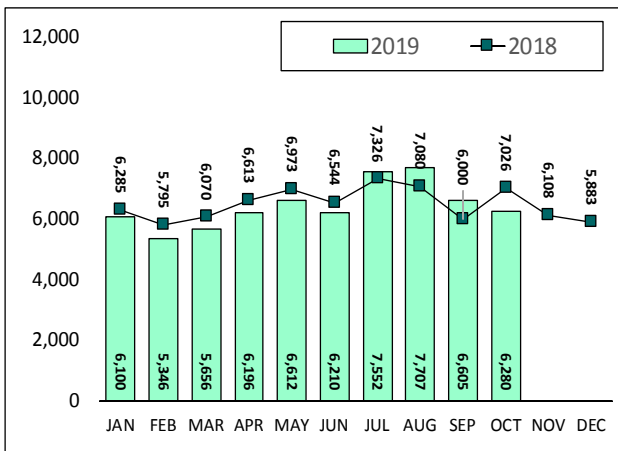
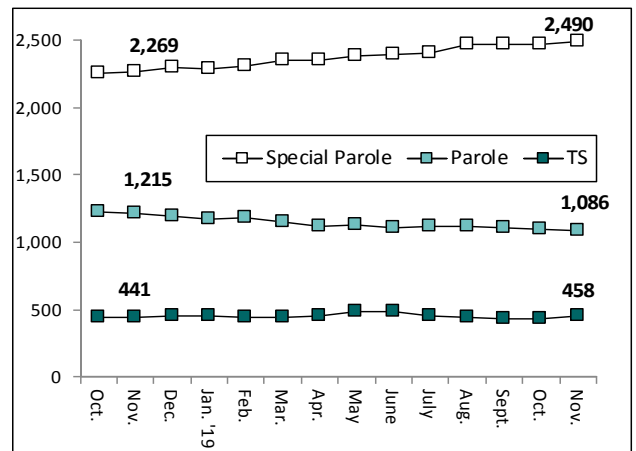


Chart 8 – DOC community supervision
 Oct. 1, 2018 through Nov. 1, 2019



Note: Data for all charts, with the exception of Chart 5, was supplied by CT DOC. Data for Chart 5 are for new case starts in the state Criminal Motor Vehicle System (CRMVS). Chart 8 includes offenders in halfway houses.