

OPM - Criminal Justice Policy & Planning Division

Monthly Indicators Report

Highlights

- The state's prisons and jails held 13,228 inmates on January 1, 2019 - down 168 prisoners since December 1st and 421 from January 1, 2018.
- Monthly arrest totals show signs of flattening. Over the last three months of 2018, statewide arrests were nearly identical with figures from 2017. For the year, arrests are down 5%, but all of the reduction happened earlier in the year. (chart 5)
- The pretrial population continues to tick up each month. In December we reported that the pretrial count was up 142 inmates year over year. This month, year on year, the pretrial component of the population is up nearly 8%, 250 inmates more than January 1, 2018.
- The distribution of pretrial inmates held on bonds is shifting. Mid-range bonds are flat compared to 2018, but those held on the lowest and highest bonds have grown. Those held in lieu of less than \$20,000 is up 11% as are those held on bonds over \$100,000. (table 5a)
- Due to a much smaller sentenced population, especially those serving under two years, the late year drop off was much smaller than in years past. (Chart 2a)
- The DOC's senior management will be all new in 2019. Retired Commissioner Scott Semple has been replaced by Rollin Cook, former head of Utah Corrections. One Deputy Commissioner and the Director of Programs and Treatment have also retired with the Director of Parole and Community Services announced his retirement for April 1st.

Prison Population Forecast

At the beginning of the year, the prison population was approximately 360 prisoners larger than the figure OPM had anticipated in its February 2018 forecast. After underestimating the contraction of the prison system in 2016 and 2017, we overestimated it in 2018.

What went wrong? Analysis of the population over the last 3 years revealed a point of inflection in the trend data occurred early in 2018, a strong indication that the rate of contraction in the prison system was slowing. Over the last few years, the prison system was shrinking by almost 900 to 1,000 prisoners per year. While we knew that this rate of contraction was unsustainable over the long term, we did not know when the brakes would be applied.

OPM will release its February 2019 forecast later this month. That forecast will report that while the prison population will continue to contract, the rate of contraction will slow considerably compared to recent trends.

TABLE 1 – Prison Population Forecast

| | Avg. Daily Count | OPM 2018 Forecast | Inmate difference |
|---------|------------------|-------------------|-------------------|
| JAN '18 | 13,688 | - | - |
| FEB | 13,819 | 13,819 | - |
| MAR | 13,753 | 13,701 | -52 |
| APR | 13,652 | 13,607 | -45 |
| MAY | 13,499 | 13,550 | 51 |
| JUN | 13,405 | 13,465 | 60 |
| JUL | 13,369 | 13,433 | 64 |
| AUG | 13,439 | 13,320 | -119 |
| SEP | 13,431 | 13,265 | -166 |
| OCT | 13,459 | 13,259 | -200 |
| NOV | 13,403 | 13,230 | -173 |
| DEC | 13,390 | 13,103 | -287 |
| JAN '19 | 13,259 | 12,901 | -358 |
| FEB | - | 13,093 | - |

If the February 2019 forecast proves to be accurate the prison population will decline by about 310 prisoners over the coming year. This moderate projection is based on the assumption that the sentenced prison population – the main source for recent declines - will be unable to deliver large system-wide reductions over the coming year.

Chart 1 – Actual prison population against the OPM forecasts

January 1, 2017 through February 1, 2019

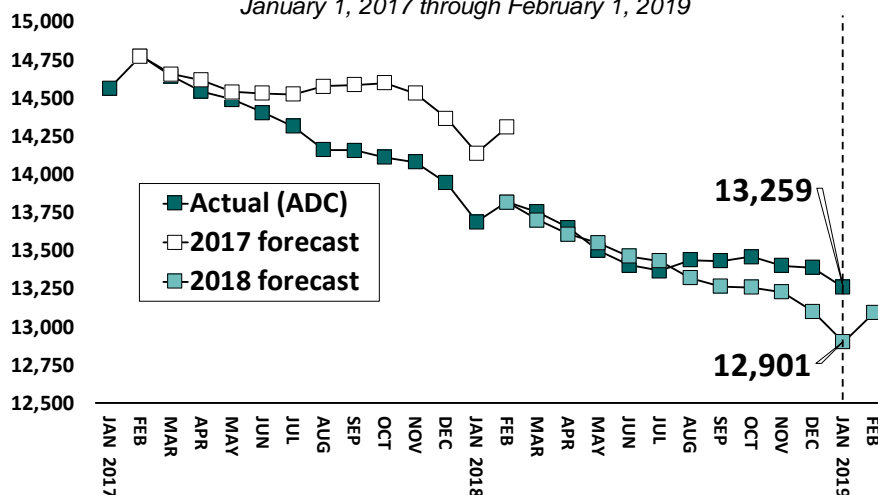


Chart 2 - Criminal justice, monthly counts and flows

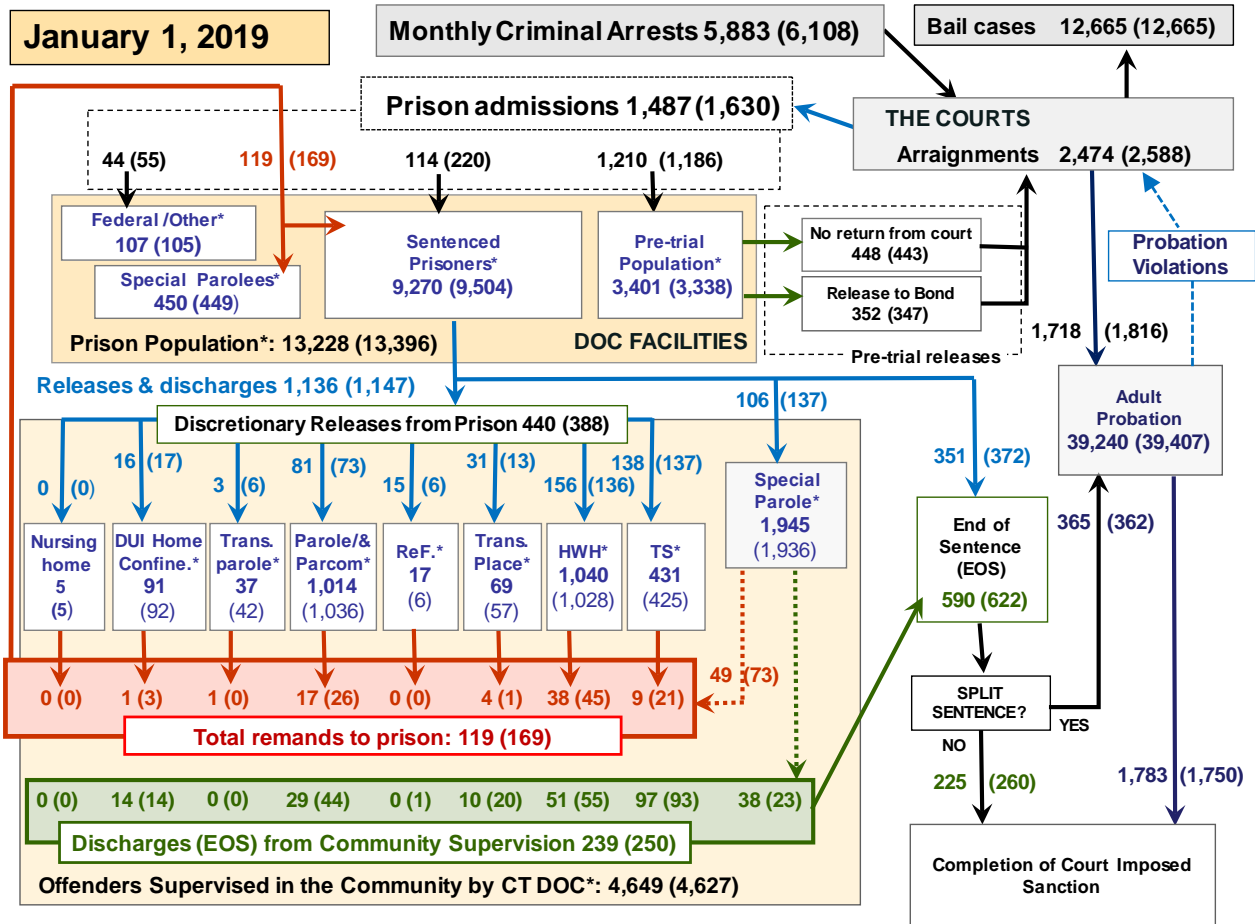
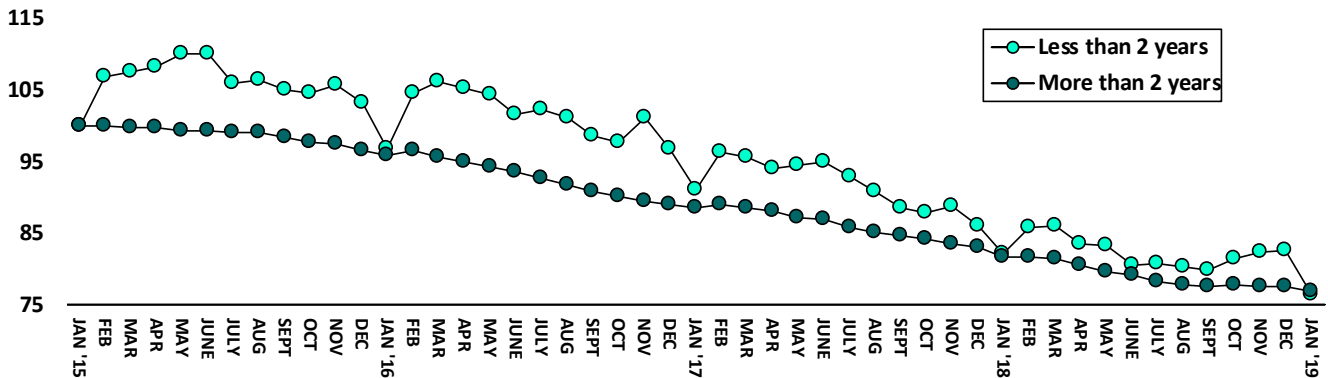


Chart 2 contains monthly operations data for December 2018 and daily counts reported on Jan. 1, 2019. Asterisks (*) indicate the daily count on Jan. 1st. Figures for last month are enclosed by parentheses. Sources: Arrests – CRMVS, Court and probation data - CSSD, all other data - CT DOC. Note: Some Judicial Branch data this month is estimated.

Chart 2a – Late-year effect on the prison population



This paper noted that the late-year drop off in the prison population appeared to be weakening in December 2014, suggesting that a shrinking population was, at least partly, responsible. This year the prison population fell by only 206 inmates between November and January; less than half of the usual 500.

Taking a closer look at the sentenced population, we found that short-term (<2 years) sentenced prisoners play an outsized role in the late year drop off. The chart above breaks out the trends, in

indexed terms, for offenders serving more than 2 years versus those serving less than <2 years over the last four years. The chart clearly shows that the late year drop is most pronounced among those serving shorter sentences.

The number of sentenced offenders serving less than 2 years, has fallen from nearly 3700 to 2500 (33%) over the last 8 years. Being only one quarter of the sentenced population means that an already smaller group has less to give resulting in a weakened late year effect.

Table 2 - First-of-month totals

| | 2018 | 2018 | 2019 | 2018 | % Change | |
|-----------------------|---------------|---------------|---------------|---------------|--------------|--------------|
| | Nov. 1 | Dec. 1 | Jan. 1 | Jan. 1 | Monthly | Annual |
| DOC Facilities | | | | | | |
| Federal/Other | 117 | 105 | 107 | 134 | 1.9% | -20.1% |
| Sentenced | 9,510 | 9,504 | 9,270 | 9,871 | -2.5% | -6.1% |
| Special Parole | 432 | 449 | 450 | 491 | 0.2% | -8.4% |
| Pre-trial | 3,375 | 3,338 | 3,401 | 3,153 | 1.9% | 7.9% |
| Total | 13,434 | 13,396 | 13,228 | 13,649 | -1.3% | -3.1% |
| DOC Community | | | | | | |
| Transfer Parole | 42 | 42 | 37 | 29 | -11.9% | 27.6% |
| Parole/ Parcom Total | 1,064 | 1,036 | 1,014 | 1,046 | -2.1% | -3.1% |
| Parole | 889 | 859 | 844 | 891 | -1.7% | -5.3% |
| Parcom @ CT | 175 | 177 | 170 | 155 | -4.0% | 9.7% |
| Furlough | 7 | 6 | 17 | 51 | - | - |
| Trans Placement | 69 | 57 | 69 | 66 | 21.1% | 4.5% |
| DUI/Home confine. | 96 | 92 | 91 | 92 | -1.1% | -1.1% |
| Halfway House Total | 1,032 | 1,028 | 1,040 | 1,017 | 1.2% | 2.3% |
| Comm Release | 495 | 485 | 509 | 515 | 4.9% | -1.2% |
| TS | 18 | 25 | 23 | 55 | -8.0% | -58.2% |
| Parole | 151 | 153 | 162 | 144 | 5.9% | 12.5% |
| Transfer Parole | 5 | 5 | 6 | 1 | - | - |
| Special Parole | 363 | 360 | 340 | 302 | -5.6% | 12.6% |
| TS | 423 | 425 | 431 | 512 | 1.4% | -15.8% |
| Nursing home | 5 | 5 | 5 | 6 | - | - |
| Special Parole | 1,906 | 1,936 | 1,945 | 1,821 | 0.5% | 6.8% |
| Total | 4,644 | 4,627 | 4,649 | 4,640 | 0.5% | 0.2% |

Table 2a - Monthly admissions, releases & discharges

| | 2018 | 2018 | 2018 | 2017 | % Change | |
|--------------------------------|--------------|--------------|--------------|--------------|--------------|--------------|
| | Oct. | Nov. | Dec. | Dec. | Monthly | Annual |
| Admissions | | | | | | |
| Federal/Other | 68 | 55 | 44 | 81 | -20.0% | -45.7% |
| Remands | 165 | 169 | 119 | 124 | -29.6% | -4.0% |
| DUI | 7 | 3 | 2 | 3 | - | - |
| Parole | 30 | 26 | 17 | 18 | -34.6% | -5.6% |
| Trans Plac/Furlough | 2 | 1 | 4 | 0 | - | - |
| HWH | 34 | 45 | 38 | 31 | -15.6% | 22.6% |
| TS | 24 | 21 | 9 | 25 | -57.1% | -64.0% |
| Special Parole | 68 | 73 | 49 | 47 | -32.9% | 4.3% |
| New Sentence | 226 | 220 | 114 | 128 | -48.2% | -10.9% |
| VOP | 70 | 59 | 27 | 41 | -54.2% | -34.1% |
| Pre-trial | 1,348 | 1,186 | 1,210 | 1,130 | 2.0% | 7.1% |
| Total | 1,807 | 1,630 | 1,487 | 1,463 | -8.8% | 1.6% |
| Releases and discharges | | | | | | |
| Transfer Parole | 15 | 6 | 3 | 1 | - | - |
| Parole | 89 | 73 | 81 | 80 | 11.0% | 1.3% |
| Furlough | 4 | 6 | 15 | 18 | - | - |
| Trans. Placement | 19 | 13 | 31 | 28 | 138.5% | 10.7% |
| Home Confinement DUI | 27 | 17 | 16 | 24 | -5.9% | -33.3% |
| HWH | 124 | 136 | 156 | 133 | 14.7% | 17.3% |
| TS | 146 | 137 | 138 | 174 | 0.7% | -20.7% |
| Special Parole | 138 | 137 | 106 | 137 | -22.6% | -22.6% |
| Nursing home | 0 | 0 | 0 | 1 | - | - |
| End of Sentence | 621 | 622 | 590 | 630 | -5.1% | -6.3% |
| Total | 1,183 | 1,147 | 1,136 | 1,226 | -1.0% | -7.3% |
| Pre-trial Releases* | | | | | | |
| From Court | 506 | 443 | 448 | 444 | -12.5% | -0.2% |
| Release to Bond | 394 | 347 | 352 | 377 | -11.9% | -8.0% |

* Totals reflect events, not individual offenders

DOC - Community Release Unit (CRU)

Table 3 - Case reviews and release metrics

| | Cases | | | | Approval |
|----------|----------|----------|--------|-----------|----------|
| | Reviewed | Approved | Denied | Continued | Rate |
| Oct. | 762 | 356 | 121 | 108 | 47% |
| Nov. | 667 | 286 | 95 | 102 | 43% |
| Dec. | 610 | 281 | 99 | 105 | 46% |
| Dec. '17 | 680 | 332 | 113 | 107 | 49% |

Board of Pardons and Paroles

Table 4 - Parole hearings, new cases

| | Parole Hearings | Paroles granted | Grant rate | Paroles granted, 2017 | Paroles granted, 2016 |
|------|-----------------|-----------------|------------|-----------------------|-----------------------|
| Oct. | 134 | 52 | 39% | 109 | 67 |
| Nov. | 159 | 74 | 47% | 91 | 97 |
| Dec. | 140 | 74 | 53% | 87 | 95 |

Table 4a - Other BOPP actions

| | Reparole from revocation | Reparole from rescission | Closed interest cases | Special parole cases | Transfer parole cases |
|----------|--------------------------|--------------------------|-----------------------|----------------------|-----------------------|
| Oct. | 56 | 2 | 22 | 40 | 1 |
| Nov. | 37 | 1 | 15 | 28 | 2 |
| Dec. | 36 | 0 | 14 | 35 | 6 |
| Dec. '17 | 28 | 3 | 16 | 35 | 4 |

The pre-trial population

Table 5 - Bond ranges for pre-trial detainees

| Bond amount | Nov. 1, 2018 | Dec. 1, 2018 | Jan. 1, 2019 | Jan. 1, 2018 |
|-------------------|--------------|--------------|--------------|--------------|
| Less than \$20K | 563 | 528 | 558 | 504 |
| \$20K to < \$50K | 489 | 518 | 502 | 503 |
| \$50K to < \$100K | 641 | 613 | 661 | 706 |
| \$100K or higher | 1,778 | 1,795 | 1,817 | 1,643 |
| Persons w/bonds | 3,471 | 3,454 | 3,538 | 3,356 |
| Over \$1M | 191 | 196 | 201 | 178 |

Table 5a - Pre-trial, weeks since admission

| Weeks since last DOC admit | Nov. 1, 2018 | Dec. 1, 2018 | Jan. 1, 2019 | Jan. 1, 2018 |
|----------------------------|--------------|--------------|--------------|--------------|
| < 1 week | 384 | 407 | 336 | 327 |
| 1 to < 3 weeks | 334 | 279 | 373 | 314 |
| 3 to < 10 weeks | 802 | 804 | 825 | 794 |
| 10 to < 30 weeks | 1,030 | 1,020 | 1,038 | 1,054 |
| 30 wks or more | 927 | 946 | 971 | 868 |
| Pre-trial prisoners | 3,477 | 3,456 | 3,543 | 3,357 |

Table 5b - Pre-trial admits, new offenders

| | Oct. 2018 | Nov. 2018 | Dec. 2018 | Dec. 2017 |
|------------------|-----------|-----------|-----------|-----------|
| Arraignments | 3,006 | 2,588 | 2,474 | 2,284 |
| Pre-trial Admits | 1,348 | 1,186 | 1,210 | 1,130 |
| New to DOC | 325 | 286 | 266 | 304 |
| % New | 24% | 24% | 22% | 27% |

Court Support Services Division

Table 6 - The Jail Re-interview Program

| | Pre-trial admissions | Offender interviews | Offenders released | Released last year |
|------|----------------------|---------------------|--------------------|--------------------|
| Oct. | 1,348 | 978 | 342 | 380 |
| Nov. | 1,186 | 866 | 301 | 367 |
| Dec. | 1,210 | 832 | 303 | 330 |

Table 6a - Pre-trial bail and probation caseloads

| | Pre-trial Bail Case Starts | Client Supv. Starts | Split Sentence Starts | Pre-trial bail cases |
|----------|----------------------------|---------------------|-----------------------|----------------------|
| Oct. | 2,050* | 2,172 | 372 | 12,665* |
| Nov. | 2,050* | 1,816 | 362 | 12,665* |
| Dec. | 2,050* | 1,718 | 365 | 12,665* |
| Dec. '17 | 2,075* | 1,590 | 375 | 12,685* |

* CSSD estimates

Note: Figures published here are based on the operational data available at the time of publication. Data in subsequent issues may not agree.

Chart 3 – Prison population

First week of the month, avg. daily count (ADC)

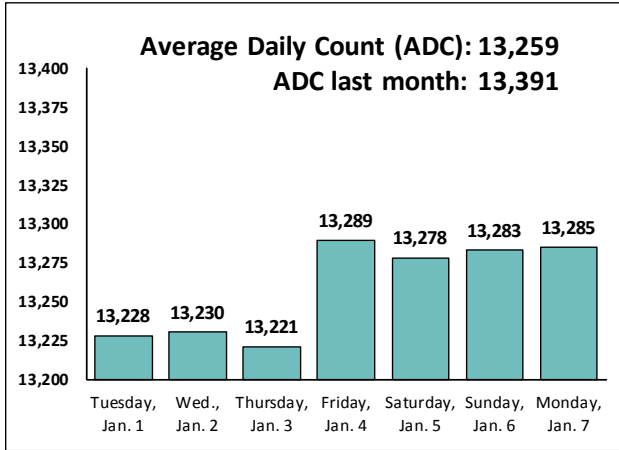


Chart 6 – Monthly DOC Admissions

Nov. 2017 through Dec. 2018

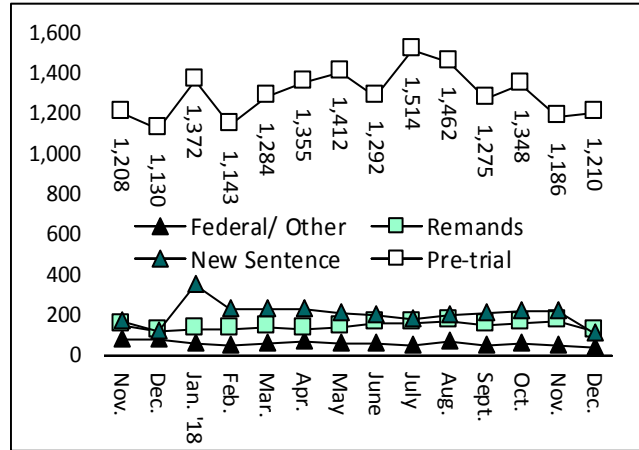


Chart 4 – Prison population, first-of-month

2016, 2017, 2018 and 2019

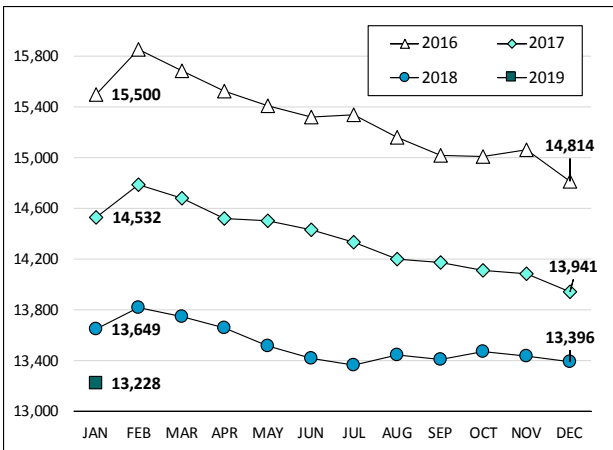


Chart 7– Remands from community release

December 2018

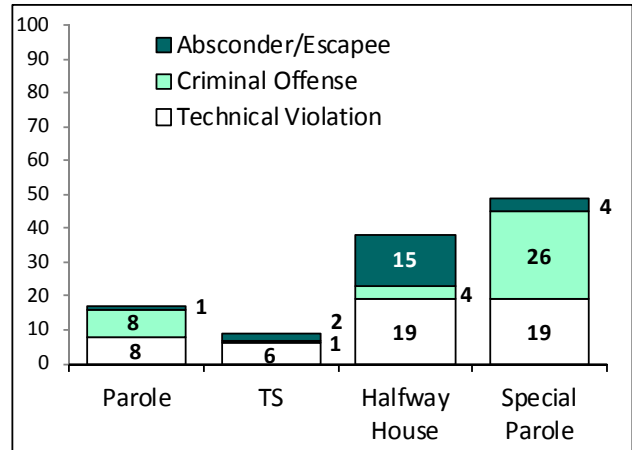


Chart 5 – Statewide criminal arrests

2017 and 2018

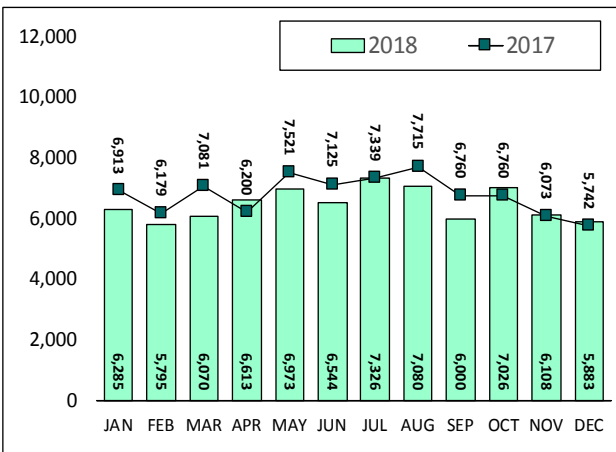
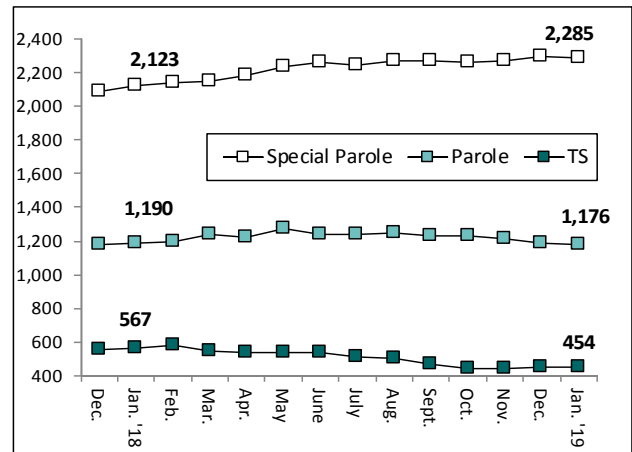


Chart 8 – DOC community supervision

Dec. 1, 2017 through Jan. 1, 2019



Note: Data for all charts, with the exception of Chart 5, was supplied by CT DOC. Data for Chart 5 are for new case starts in the state Criminal Motor Vehicle System (CRMVS). Chart 8 includes offenders in halfway houses.