

CONNECTICUT STATE PLAN REVISION

FOR

ADULT EDUCATION AND FAMILY LITERACY,

TITLE II OF THE WORKFORCE INVESTMENT ACT

PUBLIC LAW 105-220

FISCAL YEAR 2014-15

**Revision to the
Connecticut State Plan for Adult Education and Family Literacy,
Title II of the Workforce Investment Act, Public Law 105-220
Fiscal Year 2014-15**

The Connecticut State Department of Education (CSDE) submits this state plan revision based on the *Guide for the Development of a State Plan* received from the Office of Vocational and Adult Education, U.S. Department of Education. The process for State Plan Revisions, as detailed in Section 224(c) and (d) of the Adult Education and Family Literacy Act, has been followed and any applicable requirements mandated by the State of Connecticut have been met. The following sections of the Connecticut State Plan for Adult Education and Family Literacy, Title II of the Workforce Investment Act, have been revised for the period July 1, 2014, through June 30, 2015:

1. Section 3.3 includes a chart delineating the most recent organizational structure of the CSDE.
2. Section 5.0 establishes revised levels of performance for adult education and literacy activities.
3. Section 6.0 describes how the eligible agency will fund local activities in accordance with Section 231(e).
4. Section 7.2 ensures that this document will be submitted to the Governor for review and comment and any comments appended as required.

Details of each revised section follow:

Section 3.3 – Description of New Organizational Arrangements and Changes

This section of the plan includes a chart delineating the organizational design of the CSDE and establishes the line of authority from the authorized state official signing the plan revision to the state director of adult education. The organizational chart is appended to this document.

Section 5.0 –Performance Measures

This section of the plan proposes revisions to the performance targets for three core indicators of performance for adult education and literacy activities authorized under Title II for the period July 1, 2014, through June 30, 2015. The U.S. Department of Education expects that the proposed target percentages for a given year will reflect the CSDE's progress toward continuous improvement in performance. Therefore, the proposed target percentages for 2014-15 as established are based on the *actual* performance of the most recently completed fiscal year 2012-13.

Core Indicator 1: Demonstrated improvements in literacy skill levels in reading, writing and speaking the English language, numeracy, problem-solving, English language acquisition and other literacy skills.

Educational Functioning Level	Actual Percentage of Learners Completing the Level 2012-13	Proposed Target¹ Percentage of Learners Completing the Level 2014-15
ABE* Beginning Literacy	47%	48%
ABE Beginning Basic Education	47%	48%
ABE Intermediate Low	44%	45%
ABE Intermediate High	26%	26%
ASE** Low	32%	33%
ESL*** Beginning Literacy	55%	56%
ESL Low Beginning	67%	65%
ESL High Beginning	52%	53%
ESL Intermediate Low	44%	45%
ESL Intermediate High	43%	44%
ESL Advanced	22%	22%

- * Adult Basic Education
- ** Adult Secondary Education
- *** English as a Second Language

Core Indicator 2: Placement in, retention in, or completion of postsecondary education, training, unsubsidized employment or career advancement.

Follow up Indicators	Actual Percentage of Learners Attaining Outcome 2012-13	Proposed Target¹ Percentage 2014-15
Entered Postsecondary	9%	10%
Entered Employment	27%	28%
Retained Employment	54%	55%

Core Indicator 3: Receipt of a secondary school diploma or its recognized equivalent.

Follow up Indicator	Actual Percentage of Learners Attaining the Outcome 2012-13	Proposed Target¹ Percentage 2014-15
GED or Diploma	53%	53%

¹ Targets are proposed to the Office of Vocational and Adult Education (OVAE) and are pending final approval.

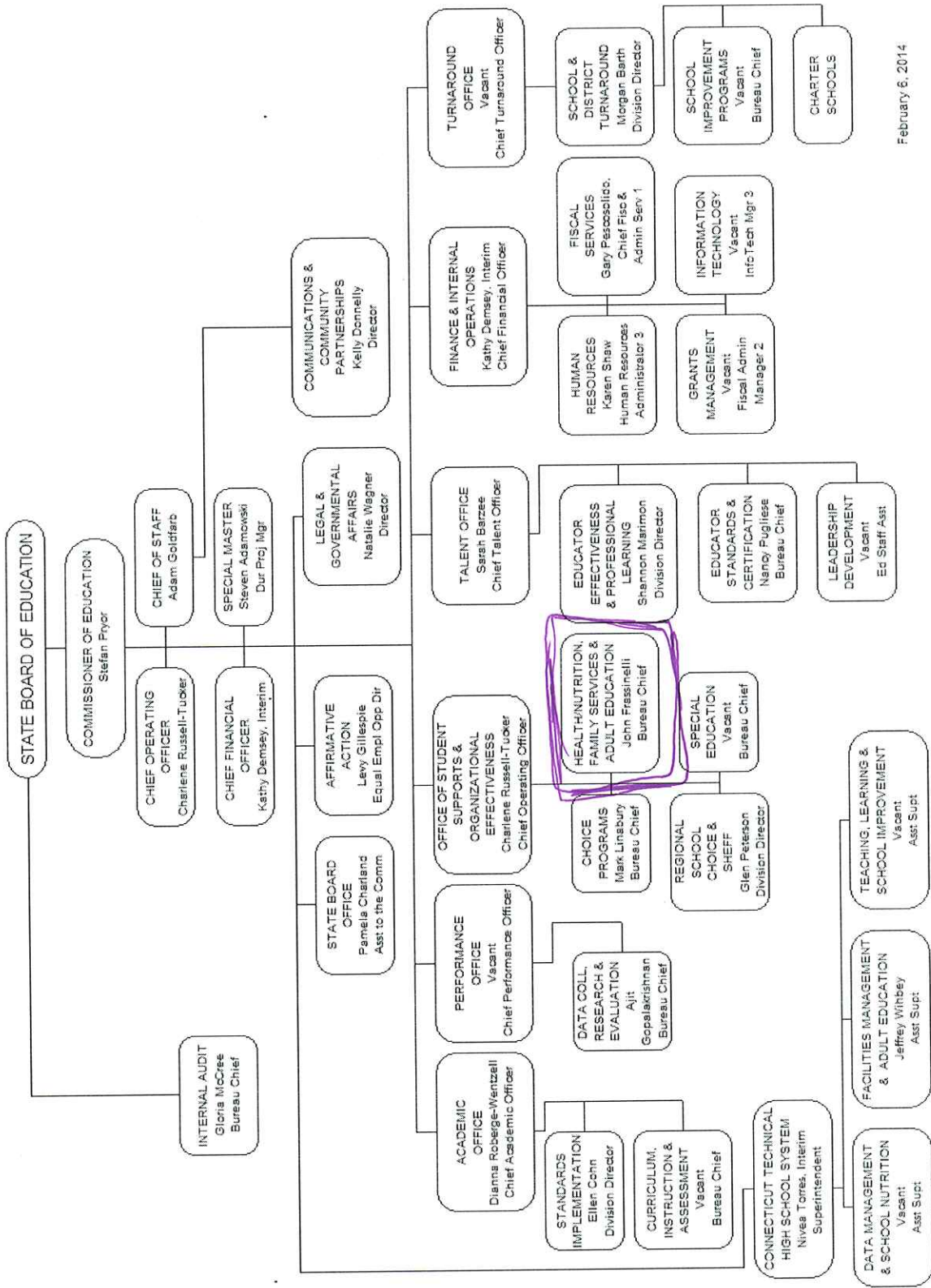
Section 6.0 – Procedures and Process for Funding Eligible Providers

The CSDE will extend current grants for FY 2014-15. Mid-year and year-end evaluative reports will require that program providers submit a current program profile, which will ensure that all projects have met the standards established by the eligible entity and that all goals have been achieved. Projects not meeting the established standards will be identified for the CSDE's intervention, which may include on-site technical assistance, a decrease in funding or an elimination of funding.

Section 7.2 – Governor's Comments

Connecticut's State Plan Revision will be submitted to the Connecticut Employment and Training Commission for its approval and then forwarded to Governor Dannel P. Malloy for review and comment in accordance with Program Memorandum OVAE/DAEL FY 2014. The Governor's comments will be appended to this document.

ORGANIZATION CHART FOR THE CONNECTICUT STATE DEPARTMENT OF EDUCATION



February 6, 2014