



**CONNECTICUT STATE PLAN REVISION**

**FOR**

**ADULT EDUCATION AND FAMILY LITERACY,**

**TITLE II OF THE WORKFORCE INVESTMENT ACT**

**PUBLIC LAW 105-220**

**FISCAL YEAR 2009-2010**

**Revision to the  
Connecticut State Plan for Adult Education and Family Literacy,  
Title II of the Workforce Investment Act, Public Law 105-220  
Fiscal Year 2009-2010**

The Connecticut State Department of Education submits this state plan revision based on the *Guide for the Development of a State Plan* received from the Office of Vocational and Adult Education, U.S. Department of Education. The process for State Plan Revisions, as detailed in Section 224(c) and (d) of the Adult Education and Family Literacy Act, has been followed and any applicable requirements mandated by the State of Connecticut have been met. The following sections of the Connecticut State Plan for Adult Education and Family Literacy, Title II of the Workforce Investment Act, have been revised for the period July 1, 2009, through June 30, 2010:

1. Section 3.3 includes a chart delineating the most recent organizational structure of the Connecticut State Department of Education.
2. Section 5.0 establishes revised levels of performance for adult education and literacy activities.
3. Section 6.0 describes how the eligible agency will fund local activities in accordance with Section 231(e).
4. Section 7.2 ensures that this document will be submitted to the Governor for review and comment and any and all comments will be appended as required.

Details of each revised section follow:

**Section 3.3 – Description of New Organizational Arrangements and Changes**

This section of the plan provides an organizational chart delineating changes to the structure of the Connecticut State Department of Education since submittal of the previous plan revision and establishes the line of authority from the authorized state official signing the plan revision to the state director of adult education. The organizational chart is appended to this document.

**Section 5.0 –Performance Measures**

This section of the plan proposes revisions to the performance targets for adult education and literacy activities authorized under Title II for the period July 1, 2009, through June 30, 2010. The proposed target percentage levels are negotiated using actual performance levels from two years prior.

**Core Indicator 1:** Demonstrated improvements in literacy skill levels in reading, writing and speaking the English language, numeracy, problem-solving, English language acquisition, and other literacy skills.

<b>Educational Functioning Level</b>	<b>Negotiated Target Percentage of Learners Completing the Level 2008-2009</b>	<b>Negotiated Target Percentage of Learners Completing the Level 2009-2010</b>
ABE Beginning Literacy *	41%	41%
ABE Beginning Basic Education	48%	44%
ABE Intermediate Low	45%	45%
ABE Intermediate High	28%	29%
ASE Low **	32%	33%
ESL Beginning Literacy ***	56%	56%
ESL Low Beginning	55%	61%
ESL High Beginning	50%	55%
ESL Intermediate Low	43%	43%
ESL Intermediate High	38%	37%
ESL Advanced	24%	22%

\* Adult Basic Education

\*\* Adult Secondary Education

\*\*\* English as a Second Language

**Core Indicator 2:** Placement in, retention in, or completion of postsecondary education, training, unsubsidized employment or career advancement.

<b>Follow up Indicators</b>	<b>Negotiated Target Percentage 2008-2009</b>	<b>Target Percentage 2009-2010</b>
Entered Postsecondary	58%	60%
Entered Employment	57%	54%
Retained Employment	69%	65%

**Core Indicator 3:** Receipt of a secondary school diploma or its recognized equivalent.

<b>Follow up Indicator</b>	<b>Negotiated Target Percentage 2008-2009</b>	<b>Target Percentage 2009-2010</b>
GED or Diploma	56%	55%

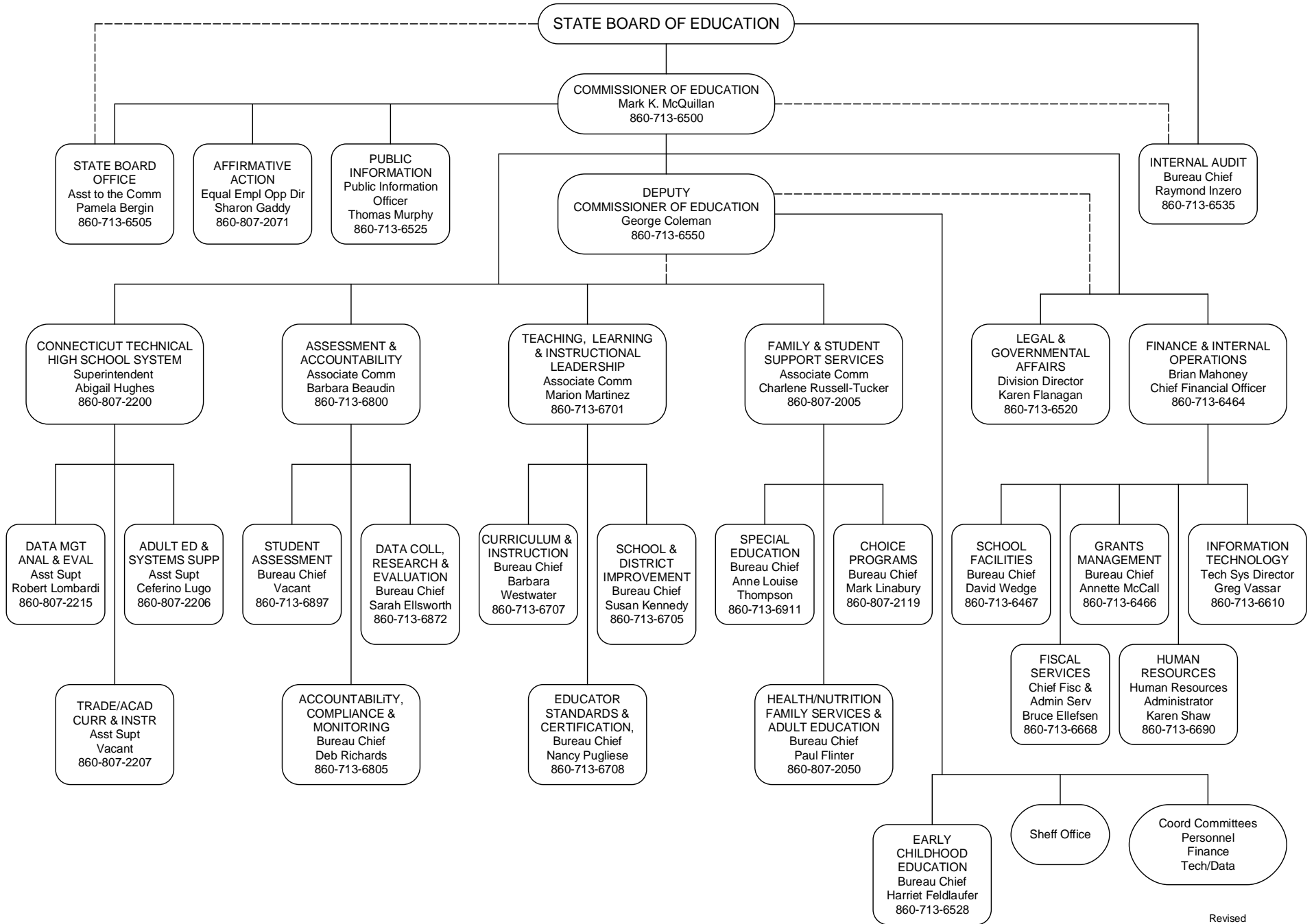
## **Section 6.0 – Procedures and Process for Funding Eligible Providers**

Since a competitive Request for Proposals (RFP) process was conducted for FY 2008-2009, the Connecticut State Department of Education (the eligible entity) will extend current grants for an additional year. Mid and year-end evaluative reports will require that program providers submit a current program profile, which will ensure that all projects have met the standards established by the eligible entity and that all goals have been achieved. Projects not meeting the established standards will be identified for Department intervention, which may include on-site technical assistance, decreasing or an elimination of funding. For 2009-10, upon availability of funds, projects that are meeting and/or exceeding established standards, program providers will be eligible for additional funds.

## **Section 7.2 – Governor’s Comments**

Connecticut’s State Plan Revision will be submitted to Governor M. Jodi Rell for review and comment in accordance with Program Memorandum OVAE/DAEL FY 2009-02. Governor Rell’s comments will be appended to this document.

# ORGANIZATION CHART FOR THE STATE DEPARTMENT OF EDUCATION




**STATE OF CONNECTICUT  
OFFICE OF THE GOVERNOR**

I have reviewed Connecticut's State Plan Revision for Adult Education and Family Literacy for the period July 1, 2009 through June 30, 2010, which was approved by the State Board of Education on March 4, 2009. The United States Department of Education's Office of Vocational and Adult Education (OVAE) requires that each state's plan revision be submitted to its Governor and any comments made by its Governor be submitted to OVAE along with the State Plan Revision.

With this in mind, I have made the following comment(s) on the State Plan Revision:

I do not have any comments on the State Plan Revision.

  
M. Jodi Rell, Governor  
State of Connecticut

3/12/09  
Date