



CONNECTICUT STATE DEPARTMENT OF EDUCATION

Smarter Balanced Assessment: Determining the Interim Assessment Block (IAB) Performance Categories

Performance Office

August 2019





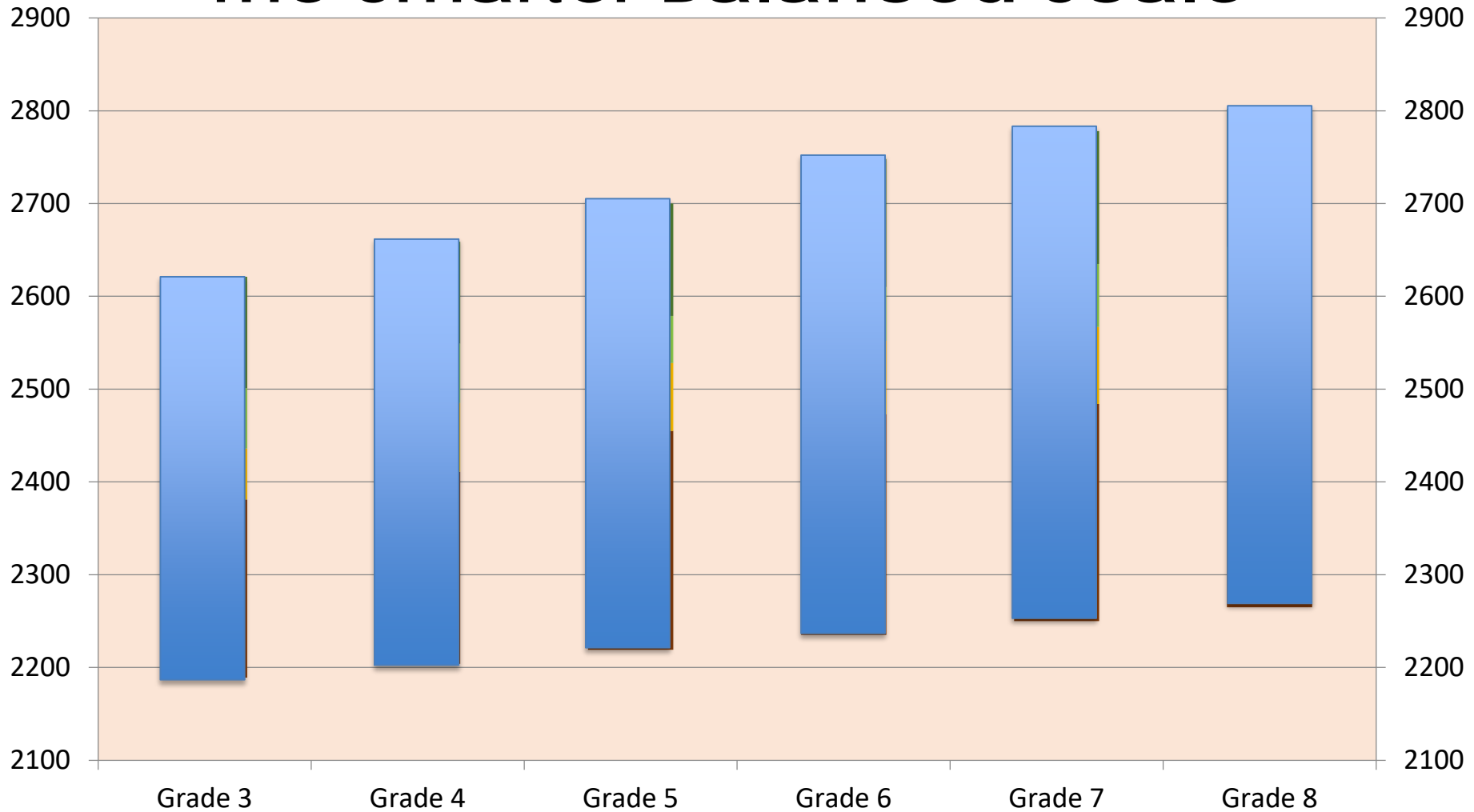
Three Important Topics

1. The Smarter Balanced Vertical Scale
2. The Smarter Balanced Achievement Levels
3. The Standard Error of Measurement (SEM)





The Smarter Balanced Scale



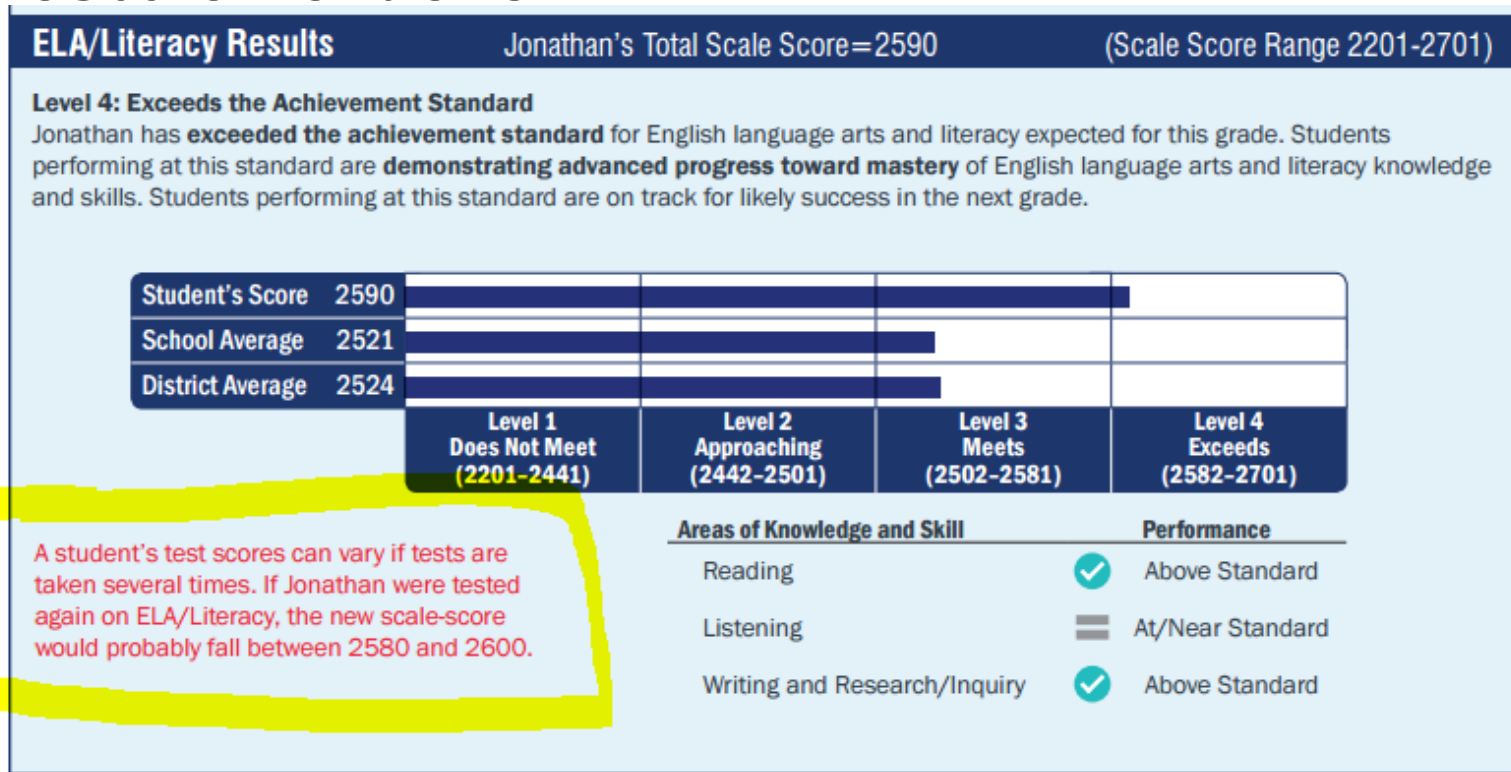
Smarter Balanced Overall Scale Scores

| ELA | Grade 3 | Grade 4 | Grade 5 | Grade 6 | Grade 7 | Grade 8 |
|--------------------------------|----------------|----------------|----------------|----------------|----------------|----------------|
| Level 4 Exceeded | 2490-2623 | 2533-2663 | 2582-2701 | 2618-2724 | 2649-2745 | 2668-2769 |
| Level 3 Met | 2432-2489 | 2473-2532 | 2502-2581 | 2531-2617 | 2552-2648 | 2567-2667 |
| Level 2 Approaching | 2367-2431 | 2416-2472 | 2442-2501 | 2457-2530 | 2479-2551 | 2487-2566 |
| Level 1 Not Met | 2114-2366 | 2131-2415 | 2201-2441 | 2210-2456 | 2258-2478 | 2288-2486 |
| Mathematics | Grade 3 | Grade 4 | Grade 5 | Grade 6 | Grade 7 | Grade 8 |
| Level 4 Exceeded | 2501-2621 | 2549-2659 | 2579-2700 | 2610-2748 | 2635-2778 | 2653-2802 |
| Level 3 Met | 2436-2500 | 2485-2548 | 2528-2578 | 2552-2609 | 2567-2634 | 2586-2652 |
| Level 2 Approaching | 2381-2435 | 2411-2484 | 2455-2527 | 2473-2551 | 2484-2566 | 2504-2585 |
| Level 1 Not Met | 2189-2380 | 2204-2410 | 2219-2454 | 2235-2472 | 2250-2483 | 2265-2503 |



The Standard Error of Measurement (SEM)

- A test score is an estimate of a student's achievement and comes with a certain amount of measurement error





Smarter Balanced Interim Assessment Blocks for Mathematics

| Grade 3 | Grade 4 | Grade 5 |
|--|--|--|
| Operations and Algebraic Thinking | Operations and Algebraic Thinking | Operations and Algebraic Thinking |
| Number and Operations – Fractions (F) | Number and Operations – Fractions | Number and Operations – Fractions |
| Measurement and Data | Measurement and Data | Measurement and Data |
| Number and Operations in Base Ten (F) | Number and Operations in Base Ten | Number and Operations in Base Ten |
| Geometry (F) | Geometry (F) | Geometry (F) |
| Properties of Multiplication and Division (F) | Four Operations: Interpret, Represent, and Solve (F) | Numerical Expressions (F) |
| Multiplication and Division: Interpret, Represent, and Solve (F) | Fraction Equivalence and Ordering (F) | Operations with Whole Numbers and Decimals (F) |
| Multiply and Divide within 100 (F) | Fractions and Decimal Notation (F) | Add and Subtract with Equivalent Fractions (F) |
| Mathematics Performance Task | Mathematics Performance Task | Mathematics Performance Task |



Smarter Balanced Interim Assessment Blocks for Mathematics

| Grade 6 | Grade 7 | Grade 8 |
|--|--|---|
| Ratio and Proportional Relationships (F) | Ratio and Proportional Relationships (F) | Functions (F) |
| The Number System | The Number System | The Number System (F) |
| Expressions and Equations | Expressions and Equations | Expressions and Equations I |
| Geometry (F) | Geometry | Geometry |
| Statistics and Probability (F) | Statistics and Probability (F) | Expressions and Equations II |
| Divide Fractions by Fractions (F) | Equivalent Expressions (F) | Proportional Relationships, Lines, and Linear Equations (F) |
| One-Variable Expressions and Equations (F) | Algebraic Expressions and Equations (F) | Analyze and Solve Linear Equations (F) |
| Dependent and Independent Variables (F) | Geometric Figures (F) | Congruence and Similarity (F) |
| Mathematics Performance Task | Mathematics Performance Task | Mathematics Performance Task |



Smarter Balanced Interim Assessment Blocks for Mathematics

High School

Algebra and Functions 1

Algebra and Functions 2

Geometry Congruence

Geometry Measurement and Modeling

Interpreting Functions (F)

Number and Quantity (F)

Seeing Structure in Expressions/Polynomial Expressions (F)

Geometry and Right Triangle Trigonometry (F)

Statistics and Probability (F)

Equations and Reasoning(F)

Solve Equations and Inequalities: Linear and Exponential (F)

Solve Equations and Inequalities: Quadratic (F)

Mathematics Performance Task





Smarter Balanced Interim Assessment Blocks for English Language Arts

Grades 3-7 and High School

Read Literary Texts

Read Informational Texts

Brief Writes

Revision

Language and Vocabulary Use (F)

Editing (F)

Listen/Interpret (F)

Research

Research: Analyze Information (F)

Research: Interpret and Integrate Information (F)

Write and Revise Narratives (F)

Performance Task





Smarter Balanced Interim Assessment Blocks for English Language Arts

| Grade 8 |
|---|
| Read Literary Texts |
| Read Informational Texts |
| Brief Writes |
| Revision |
| Edit/Revise |
| Listen/Interpret (F) |
| Research |
| Research: Analyze Information (F) |
| Research: Interpret and Integrate Information (F) |
| Write and Revise Narratives (F) |
| Performance Task |



Interim Assessment Block Performance Categories



CONNECTICUT STATE
DEPARTMENT OF EDUCATION

Individual Student Report

How did my student perform on the test?

Test: Smarter Interim Assessment Blocks ELA/Literacy Grade 3

Year: 2018-2019

Name: Lastname, Firstname M.

Student Information on the Smarter Interim Assessment Blocks ELA/Literacy Grade 3 Test: Lastname, Firstname M., 2018-2019

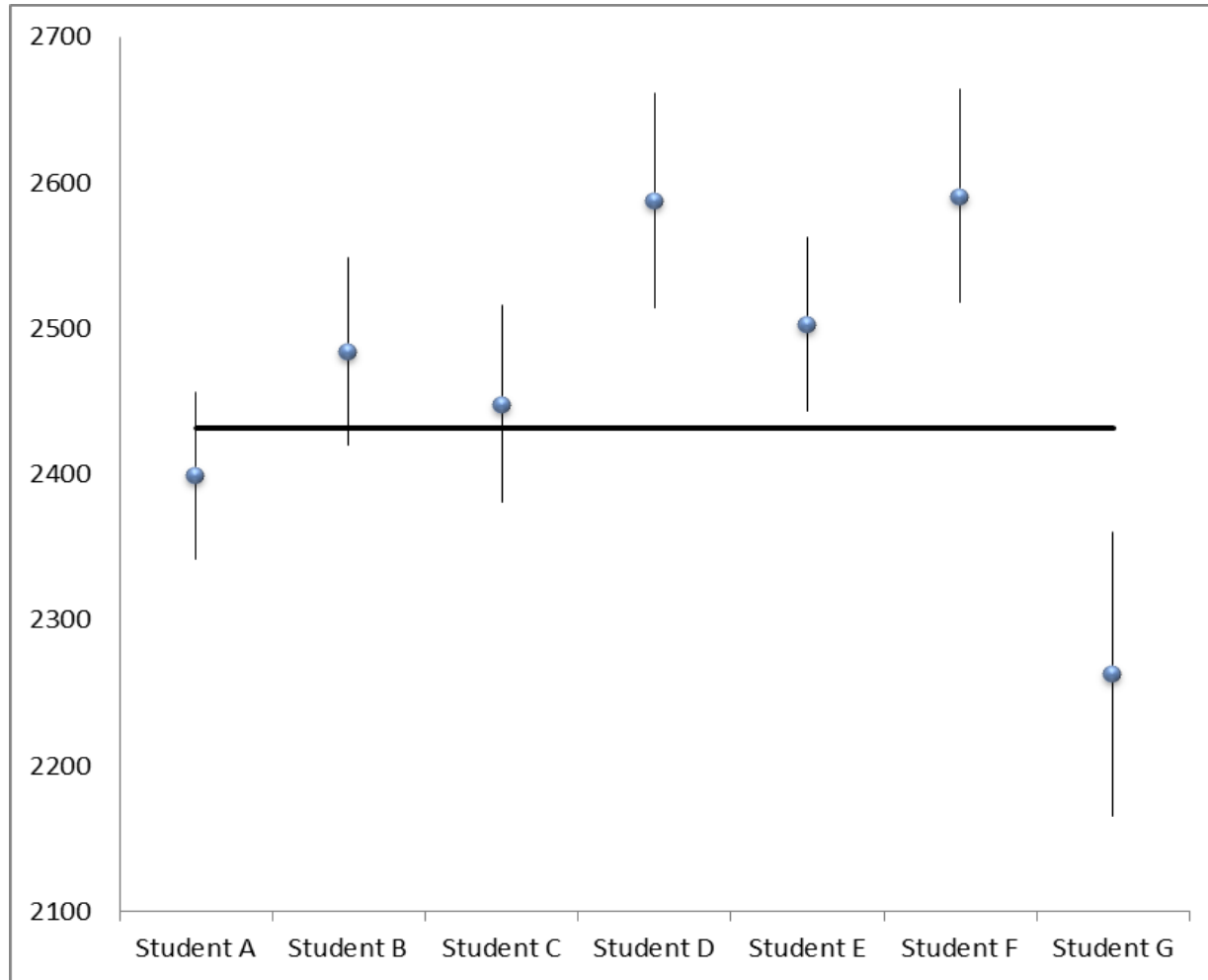
| Name | SSID | Opportunity |
|------------------------|------------|---------------------------|
| Lastname, Firstname M. | 9999999998 | Opportunity #1 10/23/2018 |

Performance on the Smarter Interim Assessment Blocks ELA/Literacy Grade 3 Test, by Block: ACEVEDO, ADRIANNA A., 2018-2019

| Block | Achievement Category |
|-----------------------------|--|
| Read Literary Texts | <input type="checkbox"/> Approaching Standard |
| Read Informational Texts | <input type="checkbox"/> Approaching Standard |
| Editing | N/A |
| Language and Vocabulary Use | <input checked="" type="checkbox"/> Above Standard |
| Revision | N/A |
| Brief Writes | <input type="checkbox"/> Below Standard |
| Listen/Interpret | <input type="checkbox"/> Below Standard |
| Research | N/A |
| Opinion Performance Task | N/A |



Grade 3 ELA IAB Example





Thank you!

Contact

Email:

ctstudentassessment@ct.gov

Phone: 860-713-6894

**Connecticut
Smarter Balanced Assessments
for
English Language Arts/Literacy
and
Mathematics**



CONNECTICUT STATE
DEPARTMENT OF EDUCATION

2019

REVISED July, 2019

Interpretive Guide

Connecticut State Board of Education

