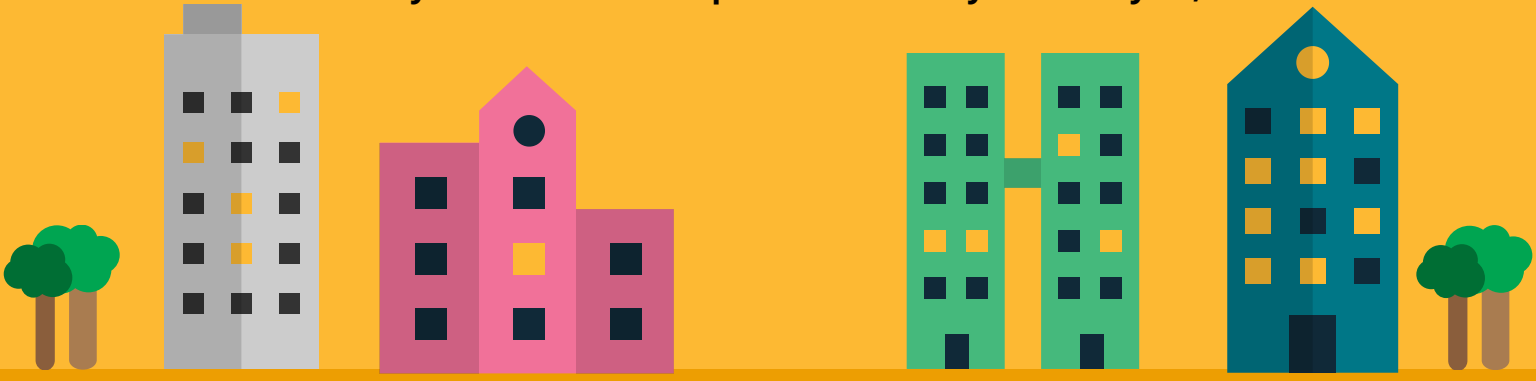


# CT DDS SURVEY

## What individuals and families think about returning to employment and day services

The intent and purpose of this survey is to enlist thoughts and feedback from individuals and families regarding priorities in the reopening of employment and day services. The department is moving towards the development of a careful and thoughtful plan to reopen employment and day services and hearing directly from individuals and families is a key factor in how we focus. The information collected from this social survey will be instrumental in helping DDS in identifying key concerns and issues, which include maintaining the health and safety of the individuals and families supported.

**This survey received 1735 responses from May 11 to May 20, 2020.**



# 42% 42% 45%

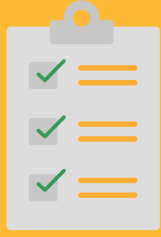
**OF INDIVIDUALS WOULD GO BACK TO WORK TOMORROW**

**OF INDIVIDUALS CAN TOLERATE BEING TESTED FOR COVID-19**

**OF INDIVIDUALS CAN TOLERATE PPE DURING THEIR SERVICE**

## CREATING A SAFE RETURN

When asked what factors are most important, the most common responses were:



**All of the Above**



**Health Screenings of Participants**



**PPE Information**

Factors considered include: Deep Cleaning, Hand Washing/Hygiene, Health Screening Participants, Health Screening Staff, No COVID, PPE Information, Providing/wearing PPE, Social Distancing, Staff Levels, Vaccine

**CT DDS PLANS TO REOPEN FOLLOWING ALL GUIDELINES DETAILED BY THE STATE OF CONNECTICUT.**

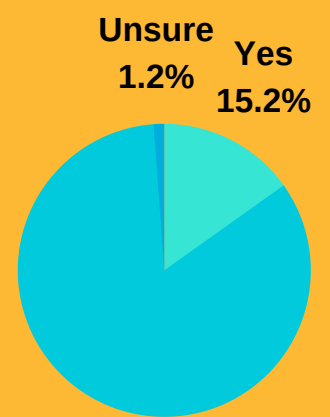


## TRANSPORTATION

# 45%

**OF INDIVIDUALS WOULD BE ABLE TO ATTEND EMPLOYMENT OR DAY SERVICES IF NO TRANSPORTATION WAS AVAILABLE**

If needed could you use Lyft, Uber, or taxi services?

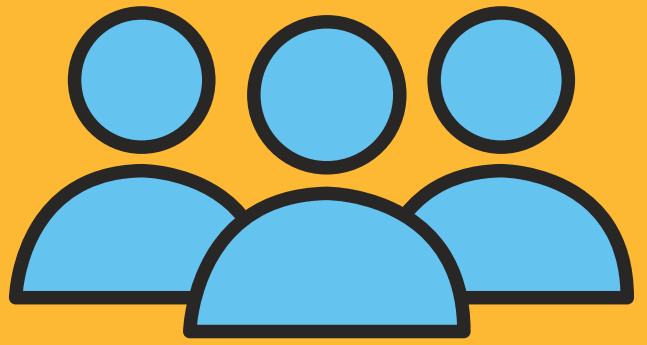


**ADDITIONALLY, INDIVIDUALS AND FAMILIES OFFERED SUGGESTIONS ABOUT ADA TRANSPORTATION, TRAVEL TRAINING, AND COSTS ASSOCIATED WITH DRIVING SERVICES.**

# CT DDS SURVEY

What individuals and families think about returning to employment and day services

# 56%



OF INDIVIDUALS HAVE BEEN IN A SOCIAL SETTING AND REMAINED 6 FEET APART FROM OTHERS (INDEPENDENTLY OR WITH REMINDERS)

What type of program(s) were you attending?\*



DSO	43%
GSE	30%
ISE	29%
IDV	23%
IDN	18%
ETS	7%
SS	2%

\*Individuals can attend multiple program types



# 51%

OF INDIVIDUALS WOULD CONSIDER HAVING STAFF COME TO THEIR HOME TO PROVIDE EMPLOYMENT AND DAY SERVICES

If you would go back to employment or day services, which choice do you like best?

Incorporate Virtual Services  
16.4%

Reduced Days/Hours  
15.5%



Back to How It Used to Be  
68.1%



50% WANT EMAIL CONTACT



25% WANT PHONE CONTACT



15% WANT TEXT CONTACT