



2016 Candidates' Forum
on Disability Issues



The Forum is sponsored by The Office of Protection & Advocacy for Persons with Disabilities, CT Council on Developmental Disabilities, CT State Independent Living Council and University of Connecticut Center for Excellence in Developmental Disabilities.

This booklet is provided through the generosity of The Office of Protection & Advocacy for Persons with Disabilities.
If you would like this booklet in alternative format, please contact P&A at:
860-297-4300 (Voice); 860-297-4380 (TDD); 800-842-7303 (Voice/TDD) or Elanah.Sherman@ct.gov





Welcome to the Candidates' Forum



Welcome to the 2016 Candidates' Forum on Disability Issues! This forum will introduce you to candidates (or their representatives) who are running for President and Vice-President, United States Senate and United States Congress.

Candidates will make opening statements on significant Federal issues, then answer questions from the Moderator. Spaces in this booklet are provided for you to record your impressions, as well as jot down questions you may want to ask of candidates in the future.

As you look through this booklet and listen to the candidates, please be aware that a candidate may be endorsed by more than one party, for example, Democrat/Working Families Party, or Republican/Independent Party. A candidate may also run as an Independent, which is different from being endorsed by the Independent Party.

We hope that the Forum functions as a springboard to greater and continued civic engagement. Use the knowledge you gain to become more informed, more active, and more assertive in ensuring that the issues important to you are on the agendas of our elected officials.



About P & A

The Office of Protection and Advocacy for Persons with Disabilities (P&A) promotes and safeguards the civil and human rights of adults and children with disabilities. The Office provides information and referral; assists in the formation and development of community-based advocacy groups; pursues advocacy and legal action on behalf of individuals with disabilities; conducts systems advocacy and

education; and investigates allegations of abuse and neglect, including inappropriate use of restraints and seclusion. As part of its advocacy work, the Office conducts comprehensive voting rights advocacy that includes education of both voters with disabilities and Registrars of Voters; evaluations of polling place accessibility; and guidance on enforcement of relevant federal and State laws.

★ Registering to Vote ★

Connecticut makes it easy to register to vote!

To register to vote in Connecticut, you must:

- Be a United States citizen;
- Be 18 years old on or by Election Day;
- Be a resident of a Connecticut town.

If you have committed a felony, you can register to vote after you have completed confinement and parole.

Registration Forms: By law, voter registration forms must be available at many public places, such as public libraries, the Department of Motor Vehicles and all offices of the Department of Social Services. You may also contact your local Registrar of Voters to obtain a registration form in person or by mail. The eligibility statement that is part of the registration process must be made available, upon request, in Braille, large print, or audio to people with visual disabilities.

Online Registration: Registration may now also be done online. The site is maintained by the Office of the Secretary of the State. The website address is:

<https://voterregistration.ct.gov/OLVR>

The site explains the process and the identification requirements, which are more restrictive than when registering by another method.

Note: One can also simply print a registration form off this site and use it to register in person or by mail.

Election Day Registration (EDR)

- EDR is also available in Connecticut. Keep in mind that ID requirements for EDR are more stringent than those required of voters when they vote at a standard polling place. Acceptable documents include, but are not limited to:
 - Birth certificate;
 - Driver's license;
 - Non-driver photo ID (issued by Department of Motor Vehicles);
 - Social Security card.

Voters who are voting for the first time in a primary or at an election with federal candidates on the ballot must present:

- A current and valid photo ID that shows name and address, OR
- A current utility bill, bank statement, government check, paycheck or government document that shows name and address.

In the absence of acceptable ID, a voter may cast a provisional ballot. These ballots are only available when candidates for federal office are in a race. Once the identity of a provisional voter has been confirmed, the ballot is reviewed and counted. Call your Registrar of Voters for specific ID requirements.

For more detailed information about the above topics, plus specific information related to disability voting rights (such as voting equipment, accessible polling places, assistance at the polling place, etc.), please see the P&A self-help booklet: *"Your Rights as a Voter with a Disability."*

★ 2016 Dates and Deadlines ★

Absentee ballots available at local Town Clerk's officeFriday, October 7
Online / Mail-Postmark / In-Person Registration deadlineTuesday, November 1
Election DayTuesday, November 8

**Completed absentee ballots are due in your local Town Clerk's Office by close of polls Election Day.
POLLS ARE OPEN FROM 6:00 AM – 8:00 PM**

★ 2016 Candidates for President / Vice-President ★

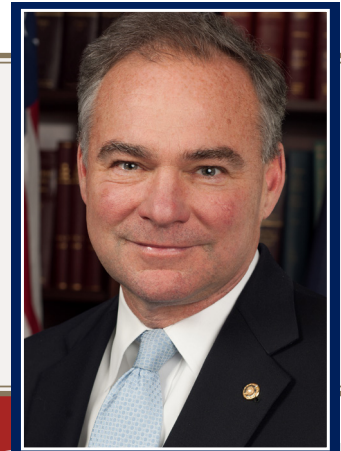
As Chief of State, the President fulfills ceremonial responsibilities, such as awarding medals; making regular media addresses; and holding press conferences. As Chief Executive, the President makes governmental appointments; holds cabinet meetings; keeps informed on the functioning of federal departments; meets with economic advisors

to discuss issues such as taxes and unemployment; and is ultimately responsible for implementing and enforcing the laws created by Congress. The President also develops foreign policy; maintains contacts with heads of state; oversees the armed services; influences members of Congress on legislation; and signs and vetoes bills.



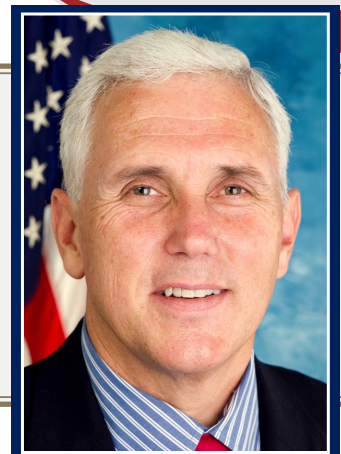
Hillary Clinton
*Democratic Party,
Presidential Candidate*

Tim Kaine
*Democratic Party,
Vice-Presidential Candidate*



Donald Trump
*Republican Party,
Presidential Candidate*

Mike Pence
*Republican Party,
Vice-Presidential Candidate*



Notes: _____

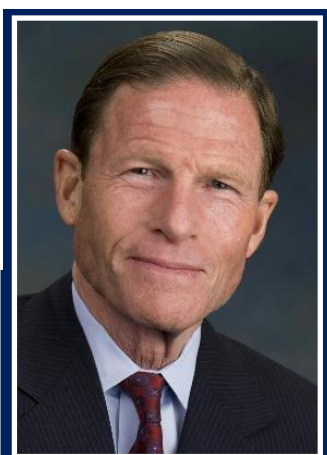
★ 2016 Candidates for United States Senate ★

The Senate is one of two federal legislative branches, the other being the House of Representatives; the Senate is the more powerful body. As the presiding officer of the Senate, the Vice-President is charged with casting the deciding vote on an issue; on day-to-day matters, other members exercise leadership positions. Each state, regardless of population, elects two Senators. Senators serve six-year terms.

Functions of Senators include creating new laws; approving (or denying) international treaties; reviewing and confirming (or rejecting) presidential

appointments, such as appointments to the Supreme Court; investigating malfeasance in the executive branch; and conducting impeachment trials.

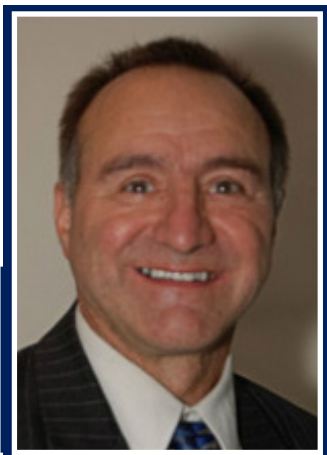
U.S. Senators maintain constituent offices where staff members answer questions and sometimes resolve constituent issues in such areas as student loans, social security, foreclosure avoidance programs, immigration, workers' compensation, veterans' assistance, healthcare, and Federal Emergency Management Administration (FEMA) disbursements, etc.



Richard Blumenthal
Democratic Party
(Incumbent)



Dan Carter
Republican Party
(Challenger)



Richard Lion
Libertarian Party
(Challenger)



Jeffrey Russell
Green Party
(Challenger)

Notes: _____

United States House of Representatives

The number of congressional representatives from a state is proportionally based on the state's population. Each of Connecticut's five members of the U.S. Congress represents one of five multi-town districts. Congressional representatives, who serve two-year terms, vote on a broad range of issues, including taxes, transportation, social service spending, healthcare, defense, and the environment; they also regularly educate constituents through media and at town meetings. Additionally, congressional representatives provide constituent services on a broad range of federally-related issues, such as student loans, social security, foreclosure-avoidance programs, immigration, workers' compensation, veterans' assistance, healthcare, and Federal Emergency Management Administration (FEMA) disbursements, etc.

First Congressional District

John Larson
Democratic Party
(Incumbent)



Matthew Corey
Republican Party
(Challenger)



Mike DeRosa
Green Party
(Challenger)



Notes: _____

Towns Covered:

- | | | | |
|---------------|----------------------|-----------------------------|---------------|
| Barkhamsted | East Windsor | New Hartford | West Hartford |
| Berlin | Glastonbury | Newington | Wethersfield |
| Bloomfield | (part) | Portland | Winchester |
| Bristol | Granby | Rocky Hill | Windsor |
| Colebrook | Hartford | South Windsor | Windsor Locks |
| Cromwell | Hartland | Southington/
Plantsville | |
| East Granby | Manchester | Torrington | |
| East Hartford | Middletown
(part) | (part) | |

★ 2016 Candidates for U.S. House of Representatives ★

Second Congressional District



Joe Courtney
Democratic Party
(Incumbent)



Daria Novak
Republican Party
(Challenger)



Jonathan Pelto
Green Party
(Challenger)



Dan Reale
Libertarian Party
(Challenger)

Towns Covered:

- | | | | | |
|------------|--------------|--------------|--------------|------------|
| Andover | East Haddam | Hampton | Stonington | Sterling |
| Ashford | East Hampton | Hebron | Norwich | Stonington |
| Bolton | East Lyme | Killingley | Old Lyme | Suffield |
| Bozrah | Eastford | Killingworth | Old Saybrook | Thompson |
| Brooklyn | Ellington | Lebanon | Plainfield | Tolland |
| Canterbury | Enfield | Lisbon | Pomfret | Union |
| Chaplin | Essex | Lyme | Preston | Vernon |
| Chester | Franklin | Madison | Putnam | Voluntown |
| Clinton | Glastonbury | Mansfield | Salem | Waterford |
| Colchester | (part) | Marlborough | Scotland | Westbrook |
| Columbia | Griswold | Montville | Somers | Willington |
| Coventry | Groton | New London | Sprague | Windham |
| Deep River | Haddam | North | Stafford | Woodstock |

Notes: _____

Fifth Congressional District



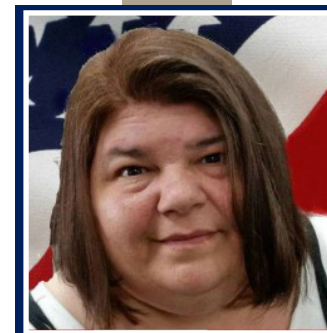
Elizabeth Esty
Democratic Party
(Incumbent)



Clay Cope
Republican Party /
Independent Party
(Challenger)



John Pistone
Independent Party
(Challenger)



Stephanie Piddock
Independent Party
(Challenger)

Towns Covered:

- | | | | | |
|-------------|------------|---------------|-------------------|------------------|
| Avon | Cornwall | Morris | Roxbury | Washington |
| Bethel | Danbury | New Britain | Salisbury | Waterbury (part) |
| Bethlehem | Farmington | New Fairfield | Sharon | Watertown |
| Bridgewater | Goshen | New Milford | Sherman | Wolcott |
| Brookfield | Harwinton | Newtown | Simsbury | Woodbury |
| Burlington | Kent | Norfolk | Southbury | |
| Canaan | Litchfield | North Canaan | Thomaston | |
| Canton | Meriden | Plainville | Torrington (part) | |
| Cheshire | Middlebury | Plymouth | Warren | |

Notes: _____

