

N 115200



PRESENT U.S. ROUTE 7 N.B.

RELEASE AREA = 17,332±SQ.FT.

EASEMENT FOR EXISTING UTILITIES  
RESERVED IN FAVOR OF STATE OF  
CONNECTICUT (D.O.T.) OR ITS ASSIGNS

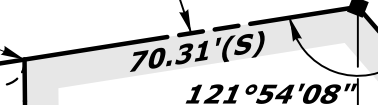
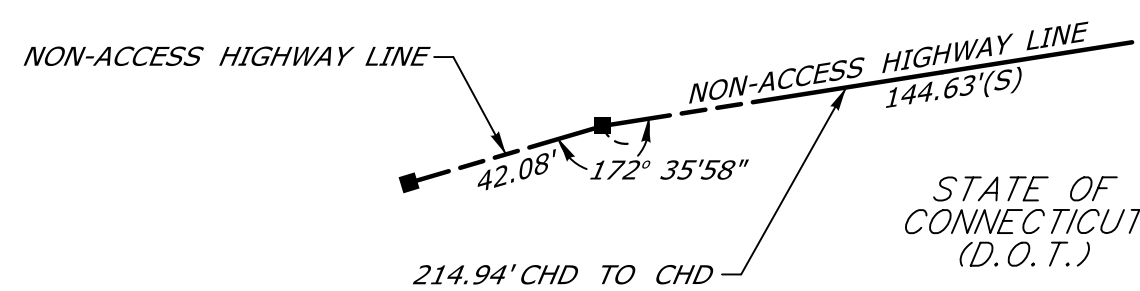
RELEASE LINE &  
NON-ACCESS  
HIGHWAY LINE

STATE OF CONNECTICUT  
FORMERLY  
PAUL G. SHIREY ET AL  
WARRANTY DEED  
VOL. 742, PG. 629  
102-129-77

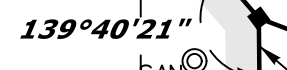
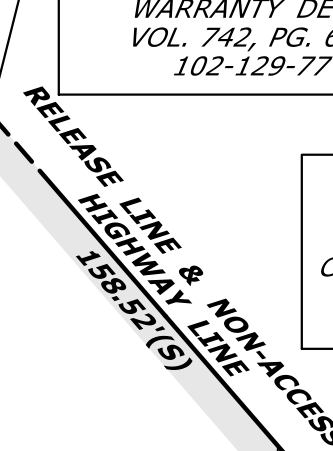
STATE OF CONNECTICUT  
FORMERLY  
GEORGE DI SCALA, JR.  
CERTIFICATE OF CONDEMNATION  
VOL. 739, PG. 192  
102-129-51

STATE OF CONNECTICUT  
FORMERLY  
FRANK J. KOZAR ET AL  
CERTIFICATE OF CONDEMNATION  
VOL. 749, PG. 52  
102-129-76

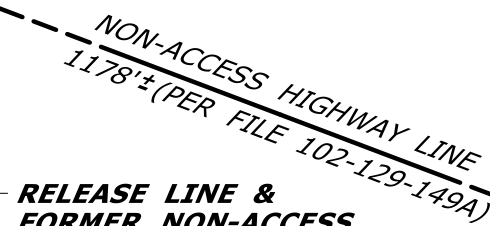
STATE OF CONNECTICUT  
FORMERLY  
JAYNE ANN LOUDON COALE  
WARRANTY DEED  
VOL. 791, PG. 113  
102-129-142



RELEASE LINE &  
PROPERTY  
LINE



PRESENT SEIR HILL ROAD



RELEASE LINE &  
FORMER NON-ACCESS  
HIGHWAY LINE  
(PER FILE 102-129-149A)

RELEASE LINE &  
STREET LINE

N/F  
GLENROCK CONDOMINIUM  
ASSOCIATION, INC.

N/F  
STONE REALTY ASSOCIATES, LLC

REFERENCES:

1. CONNDOT PRELIMINARY RIGHT OF WAY MAP NO. 102-13, SHEET NO. 6 OF 9, DATED 8-13-97, SCALE 1"=80'
2. SURVEY MAP ENTITLED "MAP SHOWING LAND ACQUIRED FROM THE STATE OF CONNECTICUT DEPARTMENT OF TRANSPORTATION BY STONE REALTY ASSOCIATES, LLC", PREPARED BY RYAN AND FAULDS LAND SURVEYORS, WILTON, CT, DRAFT DATED 1/29/2018, SCALE 1"=30'
3. CONNDOT CONSTRUCTION PLAN NO. 102-129 "RELOCATION OF U.S. ROUTE 7" SHEET NOS. 97C, 103C, AND 105A, DATED 1989
4. CONNDOT B.R.C. FILE NO. 102-129-51
5. CONNDOT B.R.C. FILE NO. 102-129-52
6. CONNDOT B.R.C. FILE NO. 102-129-76
7. CONNDOT B.R.C. FILE NO. 102-129-77
8. CONNDOT B.R.C. FILE NO. 102-129-142
9. CONNDOT B.R.C. FILE NO. 102-129-149A
10. TOWN ROAD LIST, LISTING OF LOCALLY MAINTAINED ROADS BY TOWN, PREPARED BY CONNDOT DATED: DECEMBER 31, 2017

NOTES:

1. THIS COMPILATION PLAN HAS BEEN PREPARED IN ACCORDANCE WITH THE REGULATIONS OF CONNECTICUT STATE AGENCIES, SECTIONS 20-300B-1 THROUGH 20-300B-20, AND THE "STANDARDS FOR SURVEYS AND MAPS IN THE STATE OF CONNECTICUT" AS ADOPTED BY THE CONNECTICUT ASSOCIATION OF LAND SURVEYORS, INC. ON SEPTEMBER 26, 1996. IT CONFORMS TO CLASS D ACCURACY AND IS INTENDED TO DEPICT THE LIMITS OF PROPERTY TRANSACTION AS NOTED HEREON. THIS PLAN WAS COMPILED FROM OTHER MAPS, RECORD RESEARCH, AND/OR OTHER SOURCES OF INFORMATION. IT IS NOT TO BE CONSTRUED AS HAVING BEEN NECESSARILY OBTAINED AS THE RESULT OF A FIELD SURVEY AND IS SUBJECT TO SUCH CHANGE AS AN ACCURATE FIELD SURVEY MAY DISCLOSE.
2. THE TOPOGRAPHY AND PROPERTY LINE EVIDENCE DEPICTED ARE BASED UPON THE SURVEY/MAPPING DATA AS REFERENCED. UNLESS OTHERWISE NOTED, THESE PROPERTY/BOUNDARY LINES DO NOT REPRESENT THE PROFESSIONAL OPINION OF THE UNDERSIGNED.

TO MY KNOWLEDGE AND BELIEF, THIS MAP IS SUBSTANTIALLY CORRECT AS NOTED HEREON.

SCALE IN FEET



DATE	REVISION	REQ. BY
7/11/18	MINOR REVISION	CEA
7/30/18	REVISED RELEASE LINE	CEA

VOID WITHOUT LIVE SIGNATURE AND EMBOSSED SEAL		PLS #18824
TOWN NO.	102	
PROJECT NO.	102-129	ROBERT J. BARON, P.L.S.
SERIAL NO.	76A	TITLE MANAGER - SURVEY OPERATIONS
SHEET	1 OF 1	DATE

DRAWN BY	WAH
DATE	05/2018
CHECKED BY	TJB
DATE	05/2018

File: X:\Z\_V8\_CTDOT\_NON\_PROJECTS\Survey\Release\100\_109\SV\_CS\_102\_0129\_076RMA2.dgn

**COMPILATION PLAN**

**TOWN OF NORWALK**  
MAP SHOWING LAND RELEASED TO

-

BY

**THE STATE OF CONNECTICUT**  
DEPARTMENT OF TRANSPORTATION

**U.S. ROUTE 7 @ SEIR HILL ROAD**

SCALE 1"=40' MAY 2017

MARK D. ROLFE, P.E.  
CHIEF ENGINEER - BUREAU OF ENGINEERING AND CONSTRUCTION